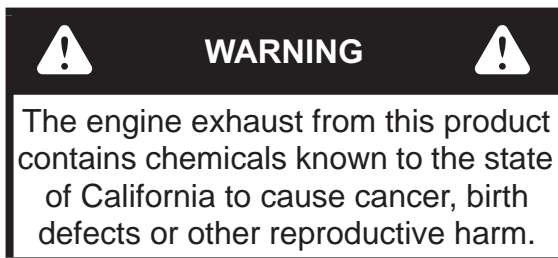


# BIGDOG<sup>®</sup> MOWER CO. STOUT<sup>™</sup> MP

## Parts Manual



200 South Ridge Road  
Hesston, Kansas  
67062



#### NOTICE OF REQUIREMENT OF SPARK ARRESTER MUFFLER

This equipment may create sparks that can start fires around dry vegetation. California Public Resources Code Section 4442.6 provides that it is unlawful to use or operate an internal combustion engine on any forest-covered, brush-covered, or grass-covered land unless the engine is equipped with a spark arrester maintained in effective working order. A spark arrester is a device constructed of nonflammable materials specifically for the purpose of removing and retaining carbon and other flammable particles over 0.0232 of an inch in size from the exhaust flow of an internal combustion engine that uses hydrocarbon fuels or which is qualified and rated by the United States Forest Service. Other states or federal areas may have similar laws. The Operator Should Contact Local Fire Agencies For Laws or Regulations Relating to Fire Prevention Requirements. **THIS EQUIPMENT DOES NOT HAVE A SPARK ARRESTER AND YOU SHOULD CONTACT YOUR AUTHORIZED DEALER FOR THE PURCHASE OF A SPARK ARRESTER.**

Inspect spark arrester daily; replace every 500 hours or as needed.

The Engine Owner's Manual provides information regarding the U.S. Environmental Protection Agency (EPA) and the California Emission Control Regulation of emission systems, maintenance and warranty.

Keep Engine Owner's Manual with your unit. Should the Engine Owner's Manual become damaged or illegible, replace immediately. Replacements may be ordered per the information found in the Product Information section of the owner's manual.

Federal law and California State law prohibit the following acts or the causing thereof:

1. The removal or rendering inoperative by any person other than for purposes of maintenance, repair, replacement, of any device or element of design incorporated into any equipment for the purposes of emissions control prior to or after its sales or delivery to the ultimate purchaser or while it is in use, or
2. The use of the equipment after such device or element of design has been removed or rendered inoperative by any person.

---

# Table of Contents

## General Information

Service Literature . . . . .	1-1
Options Available From Your Dealer. . . . .	1-1
Using This Manual . . . . .	1-1
Hardware Description Codes & Abbreviations . . . . .	1-2
Standard Torques . . . . .	1-2

## Section 2

Frame . . . . .	2-2
Headlights . . . . .	2-4
Engine Guard & Hitch—S/N 15120101 & Higher . . . . .	2-6

## Section 3

Hydraulic Transmission. . . . .	3-2
Transmission Service Parts . . . . .	3-4
Steering. . . . .	3-6
Steering Assembly . . . . .	3-10
Steering Box Assembly. . . . .	3-12

## Section 4

Wheel & Tire . . . . .	4-2
Front Tire Breakdown—13 X 5 . . . . .	4-4
Front Tire Breakdown—13 X 6.5. . . . .	4-6
Drive Wheel Breakdown . . . . .	4-8

## Section 5

Engine. . . . .	5-2
Engine Service Parts. . . . .	5-4
Fuel System . . . . .	5-6

## Section 6

Battery & Fenders . . . . .	6-2
Instrument Panel. . . . .	6-4

## Section 7

48" Service Deck. . . . .	7-2
48" Deck Pulleys & Spindles. . . . .	7-4
48" Deck . . . . .	7-6
54" Service Deck. . . . .	7-8
54" Deck Pulleys & Spindles. . . . .	7-10
54" Deck . . . . .	7-12
60" Service Deck. . . . .	7-14
60" Deck Pulleys & Spindles. . . . .	7-16
60" Deck . . . . .	7-18
Deck Lift . . . . .	7-20

---

**Section 8**

Seat—S/N 15120101 & Higher.....	8-2
Seat—S/N Prior to 15120101.....	8-4
Footrest, Engine Guard & Hitch—S/N Prior to 15120101 .....	8-6
Seat Service Parts—S/N 15010001 & Higher .....	8-8
Seat Service Parts—S/N Prior to 15010001.....	8-9
ROPS.....	8-10

---

# General Information

This manual covers BigDog Stout MP<sup>®</sup> models: **933770, 933788 & 933796.**

---

## **Service Literature**

<b>PART NO.</b>	<b>DESCRIPTION</b>
605599	OPERATOR'S MANUAL
121582	WARRANTY STATEMENT
121366	GENERAL SERVICE MANUAL

---

## **Options Available From Your Dealer**

<b>PART NO.</b>	<b>DESCRIPTION</b>
933655	2-BAG CATCHER
121074	2-BAG CATCHER ADAPTER KIT (48")
121075	2-BAG CATCHER ADAPTER KIT (54")
121076	2-BAG CATCHER ADAPTER KIT (60")
121474	MULCH KIT (48")
121475	MULCH KIT (54")
121476	MULCH KIT (60")
121478	HIGH VACUUM KIT (48")
121479	HIGH VACUUM KIT (54")
121480	HIGH VACUUM KIT (60")
121472	STRIPE KIT
600213	FLEX FORKS KIT (48")
605123	FLEX FORKS KIT (54/60")
333724	STEERING EXTENSION KIT
119288	SEAT ISOLATOR KIT

*Note: When ordering parts, you must use the part number as shown for each part, not the index number. Always give the model and serial number to your parts and service representative.*

*Note: Items sold in bulk such as seals and hoses are sold by the foot.*

---

## **Using This Manual**

*This manual is part of a service package for the BigDog<sup>®</sup> mowers. Use of this manual in conjunction with other BigDog<sup>®</sup> mower and component manuals will provide the information necessary to service and maintain BigDog<sup>®</sup> mowers.*

*This Parts Manual provides a complete parts listing for the unit. Use this manual when ordering parts. Illustrations used were current at the time of printing, but subsequent production changes may cause your machine to vary slightly in detail. Excel Industries, Inc. reserves the right to redesign and change the machine as deemed necessary, without notification. If a change has been made to your machine which is not reflected in this parts manual, see your authorized dealer for current information and parts.*

*The Service Manual is a service guide for use by Service Technicians. It provides the necessary information needed to perform normal maintenance requirements on these units.*

*The Operator's Manual provides fundamental operational information and operational safety that is needed when operating the mower.*

*The component manuals are furnished by the various manufacturers to be used for the troubleshooting and servicing of their products.*

---

---

## **Hardware Description Codes & Abbreviations**

The following codes are used throughout this parts manual. Refer to this list when ordering parts.

<b>ABBREVIATION</b>	<b>DESCRIPTION</b>	<b>ABBREVIATION</b>	<b>DESCRIPTION</b>
CB	CARRIAGE BOLT	MB	MACHINE BUSHING
CE	CLEVIS PIN	MS	MACHINE SCREW
CN	CLIP NUT	NT	NUT
CP	COTTER PIN	SC	SELF TAPPING CAP SCREW
CS	CAP SCREW	SH	SOCKET HEAD
CW	CUP WASHER	SB	SHOULDER BOLT
FDRW	FENDER WASHER	SS	SET SCREW
FW	FLAT WASHER	OD	OUTSIDE DIAMETER
HX	HEX HEAD	ID	INSIDE DIAMETER
LW	LOCK WASHER	WN	WELD NUT

---

## **Standard Torques**

The following chart lists the standard torque values for the threaded fasteners found in this manual. Torque all cap screws, nuts and set screws to these values unless a different torque is shown in the Notes section next to the fastener.

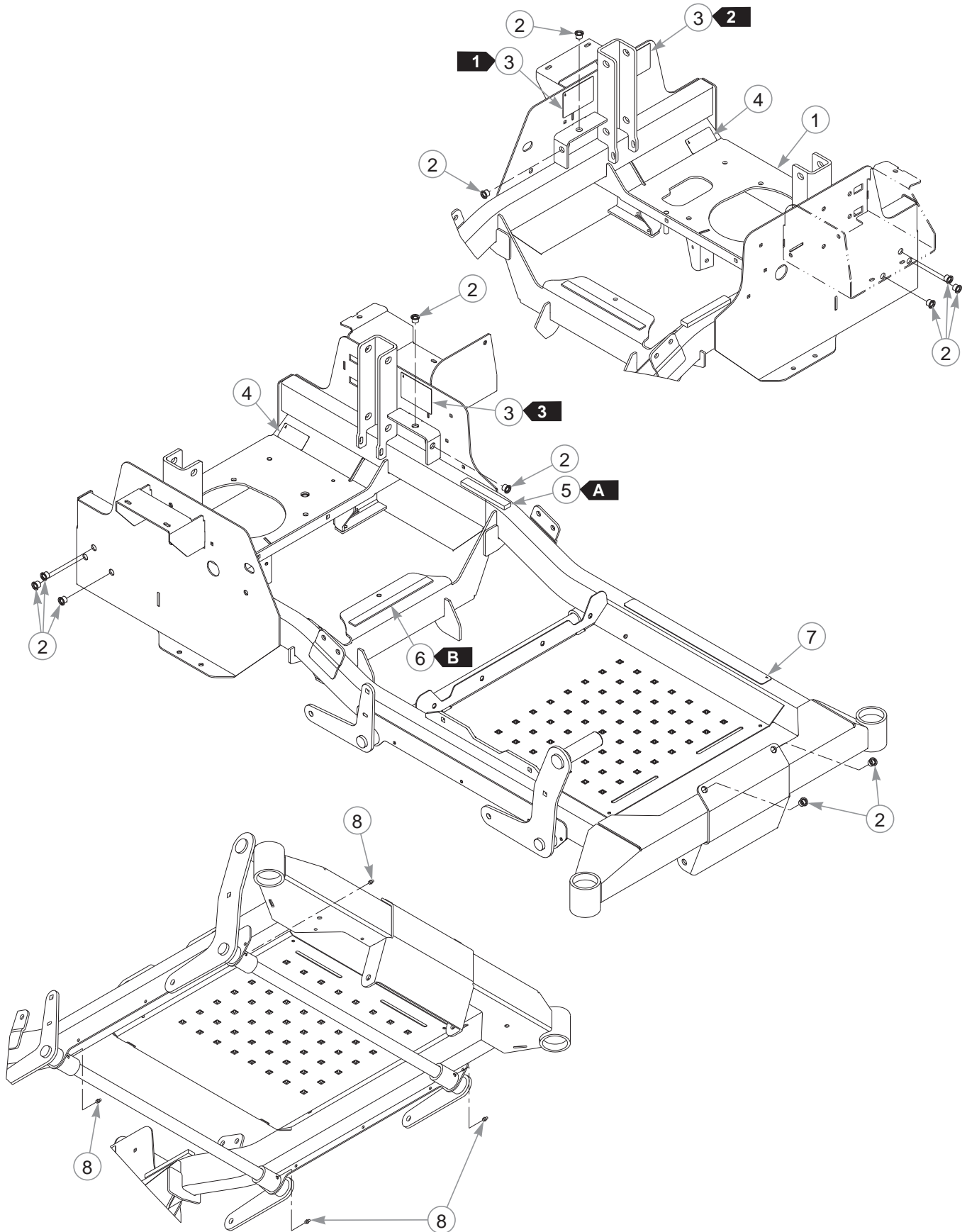
<b>SIZE</b>	<b>FT-LBS</b>	<b>N•M</b>	<b>SIZE</b>	<b>FT-LBS</b>	<b>N•M</b>
.250	8.2	11.1	M3	1	1.3
.312	17	23	M4	2.2	3
.375	30	40	M5	4.5	6.1
.438	48	65	M6	7.7	10.4
.500	73	99	M8	18.5	25
.562	105	143	M10	37	50
.625	145	200	M12	64	87
.750	260	350	M14	80	108.5
.875	420	565	M16	160	215
1.00	625	850	M20	320	435
			M24	555	750

---

## Section 2

Frame .....	2-2
Headlights .....	2-4
Engine Guard & Hitch—S/N 15120101 & Higher .....	2-6

# Frame







---

# **Frame**

INDEX NO.	PART NO.	QTY.	DESCRIPTION
1	552895	1	48" FRAME (WITH DECALS & HARDWARE)
	552849	1	54/60" FRAME (WITH DECALS & HARDWARE)
2	808493	12	3/8-16 THREAD RIVET NUT
3	N/A	3	SERIAL NUMBER / SPEC DECAL
4	602041	2	HOT DECAL
5	713198	5"	SEAL 3/8 X 3/4
6	033035	9"	WEATHERSTRIP
7	601993	1	SAFE OPERATION DECAL
8	015495	4	GREASE FITTING STRAIGHT

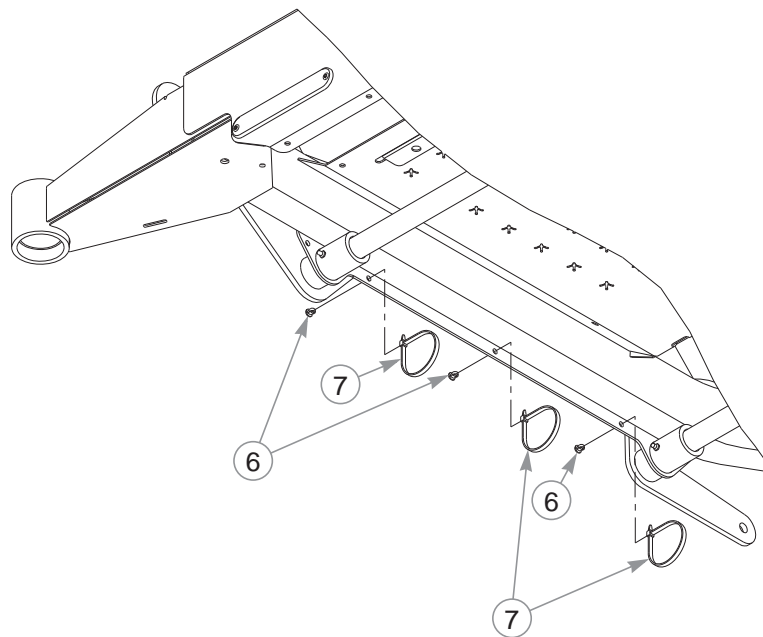
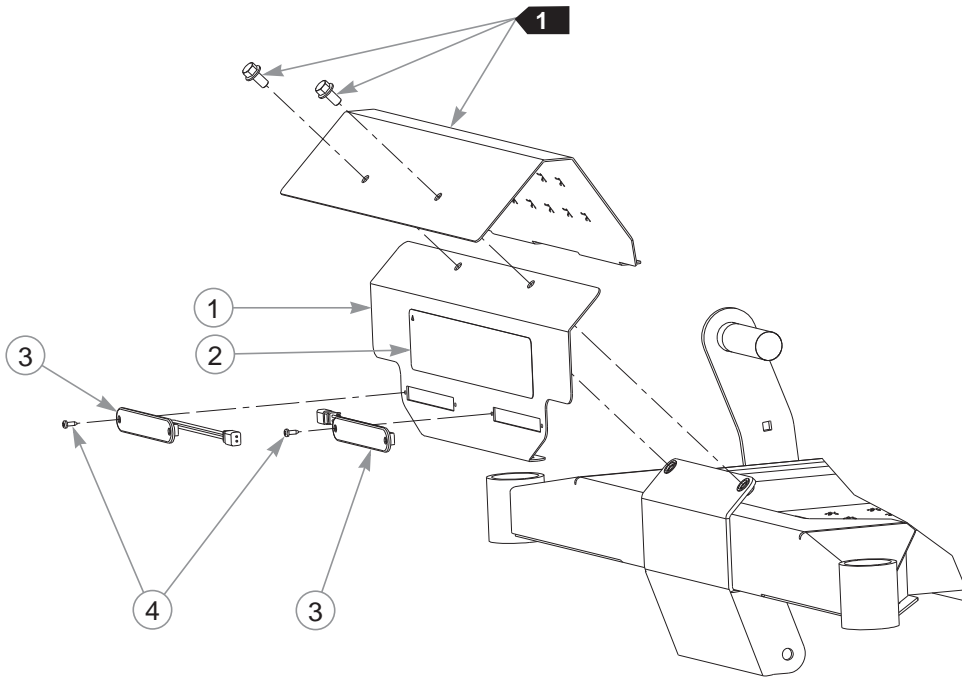
---

## NOTES:

SEAL/WEATHERSTRIP LENGTHS	
	5.0"
	9.0"

1. Serial number decal. In the event the serial number decal becomes damaged or illegible, please contact your dealer to order a replacement.
2. EPA compliance decal.
3. Patent numbers decal.

# Headlights



---

## **Headlights**

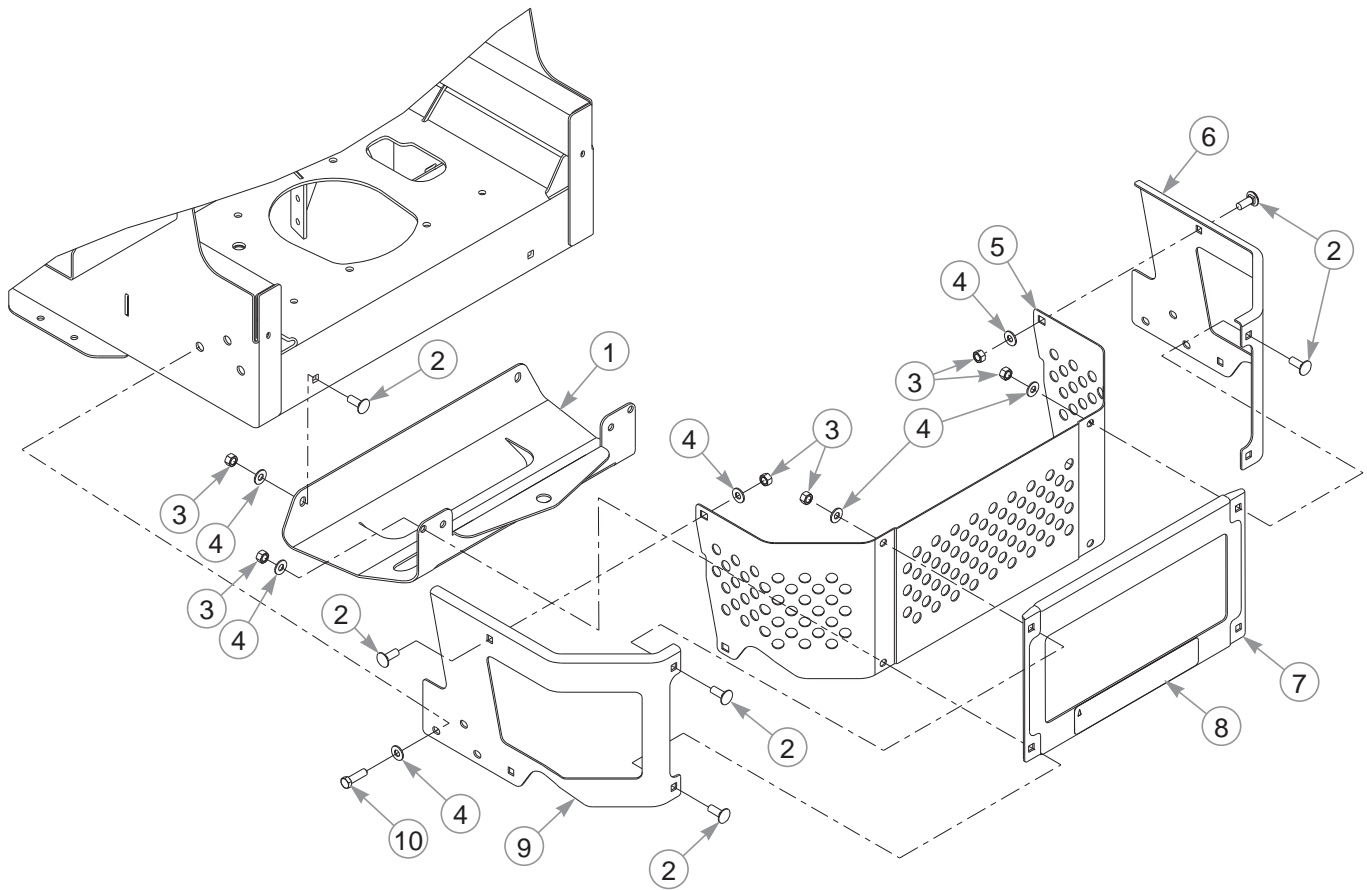
<b>INDEX NO.</b>	<b>PART NO.</b>	<b>QTY.</b>	<b>DESCRIPTION</b>
1	552899	1	HEADLIGHT MOUNT (WITH DECAL)
2	605072	1	FOOTREST DECAL
3	605003	2	LIGHT
4	605225	4	CS #8-32 X .500 PH TRX
5	605660	1	LIGHT HARNESS (NOT SHOWN)
6	604307	10	PUSH BUTTON MOUNT
7	000331	13	WIRE TIE

---

### **NOTES:**

1. Part of the Seat Assembly.

# **Engine Guard & Hitch—S/N 15120101 & Higher**



---

## **Engine Guard & Hitch—S/N 15120101 & Higher**

INDEX NO.	PART NO.	QTY.	DESCRIPTION
1	119977	1	HITCH PLATE
2	025395	10	CB .375-16 X 1.00 G5 ZNY
3	054502	10	NT .375-16 HX G5 ZNY
4	767954	16	FW .379 X .813 X .063
5	121406	1	SCREEN
6	190248	1	RS GUARD
7	553124	1	CENTER GUARD (WITH DECAL)
8	605073	1	BUMPER DECAL
9	190247	1	LS GUARD
10	052860	6	CS .375-16 X 1.25 HX G5 ZN

---

### **NOTES:**

1. See Section 8 for Footrest, Engine Guard & Hitch—S/N Prior to 15120101.

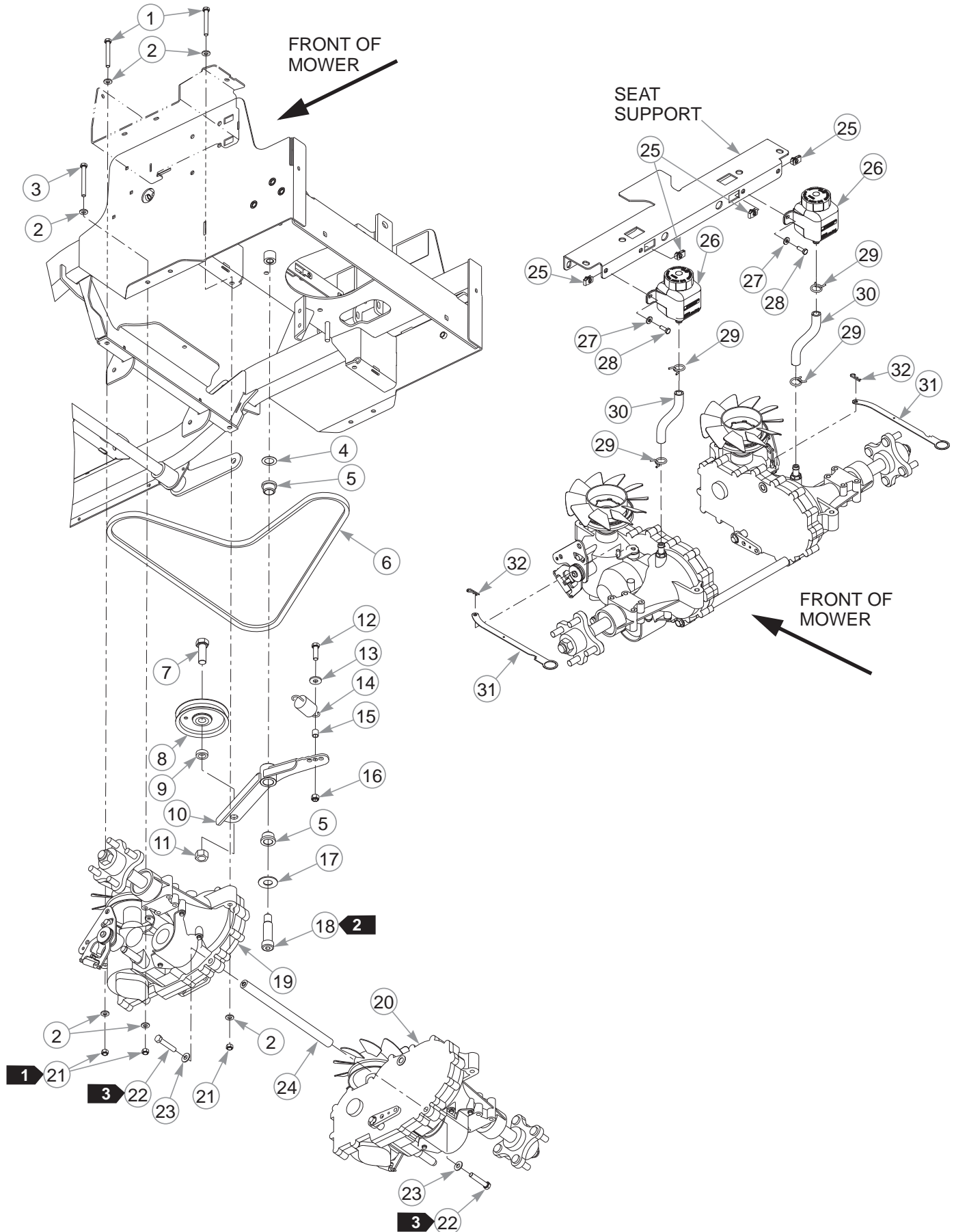


---

## Section 3

Hydraulic Transmission . . . . .	3-2
Transmission Service Parts . . . . .	3-4
Steering . . . . .	3-6
Steering Assembly . . . . .	3-10
Steering Box Assembly . . . . .	3-12

# Hydraulic Transmission





---

# **Hydraulic Transmission**

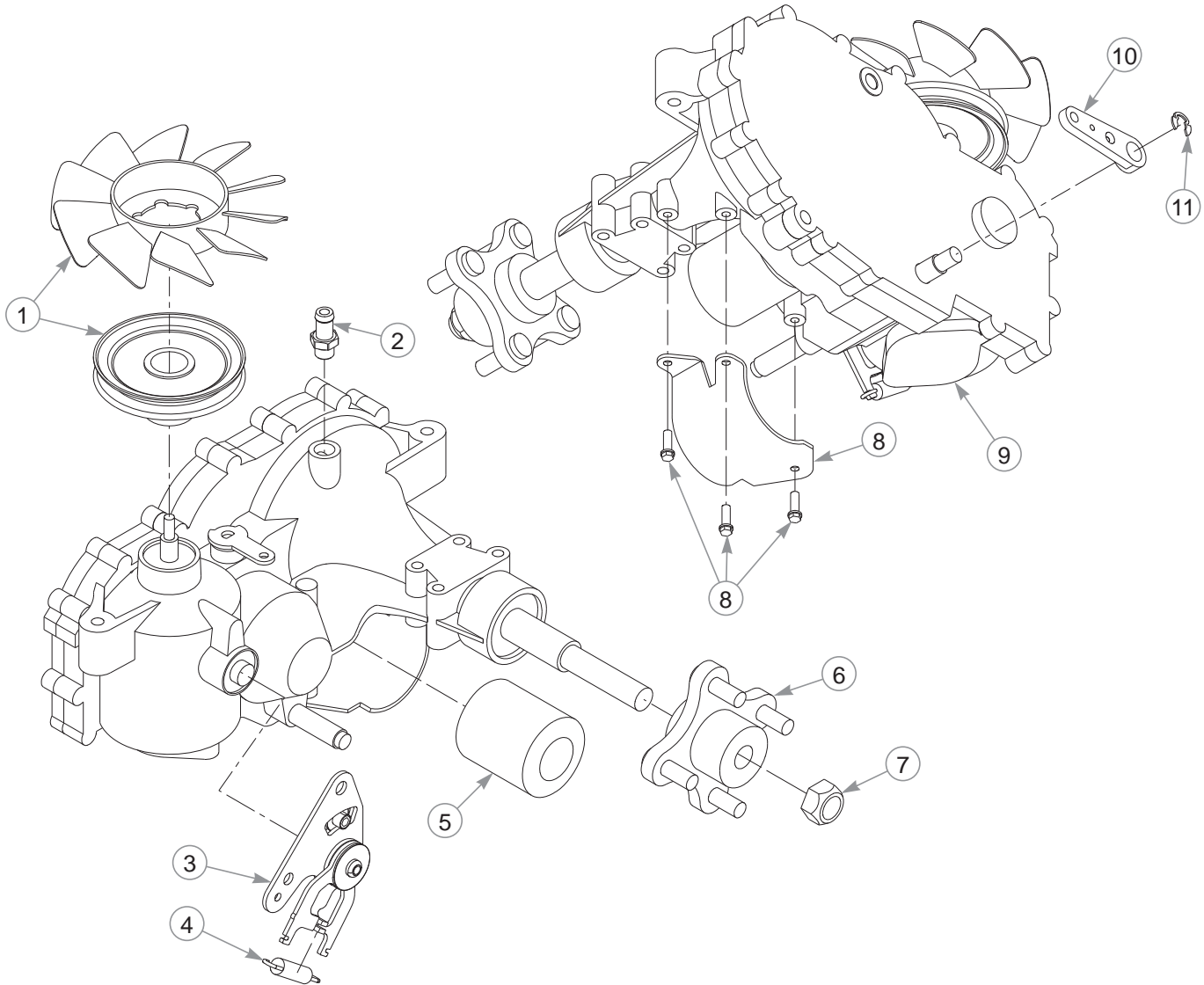
INDEX NO.	PART NO.	QTY.	DESCRIPTION
1	710087	4	CS .312-18 X 2.50 HX G5
2	768523	16	FW .343 X .687 X .051/.080H
3	043067	4	CS .312-18 X 3.00 HX G5 Z
4	704791	1	FW .781 X 1.25 X .024 ZN
5	781153	2	BUSHING
6	605468	1	BELT, A-SEC
7	025007	1	CS .625-11 X 1.75 HX G5
8	786848	1	IDLER PULLEY
9	600296	1	DECK IDLER SPACER
10	190325	1	TENSION ARM
11	016972	1	NT .625-11 HX G5 ZNYC
12	052860	1	CS .375-16 X 1.25 HX G5
13	712919	1	FW .406 X 1.00 X .12 HRD Z
14	036384	1	SPRING 1/4 COIL PL 1.23
15	605481	1	BUSHING
16	086660	1	NT .375-16 HX G5 NL
17	025296	1	FW .760 X 1.625 X .08
18	601084	1	SB .750 X 2.00 SH .625-11
19	605500	1	LS TRANSMISSION
20	605501	1	RS TRANSMISSION
21	058776	8	NT .312-18 HX G5 ZY NL
22	016410	2	CS .375-16 X 2.00 HX G5
23	767954	2	FW .379 X .813 X .063
24	600987	1	SPACER TUBE
25	601982	4	CN .250-20 X .15 MAX THK
26	605217	2	SINGLE FITTING RESERVOIR (WITH CAP)
	600767	2	RESERVOIR CAP
27	768515	4	FW .281 X .625 X .066
28	055939	4	CS .250-20 X .75 HX G5
29	601001	4	SPRING CLAMP
30	605218	2	OVERFLOW HOSE
31	120126	2	TOW VALVE LINK
32	706549	2	HP .080D X 1.19

---

## **NOTES:**

1. Torque to 17 ft-lbs.
2. Torque to 100 ft-lbs.
3. Torque to 30 ft-lbs.

# Transmission Service Parts

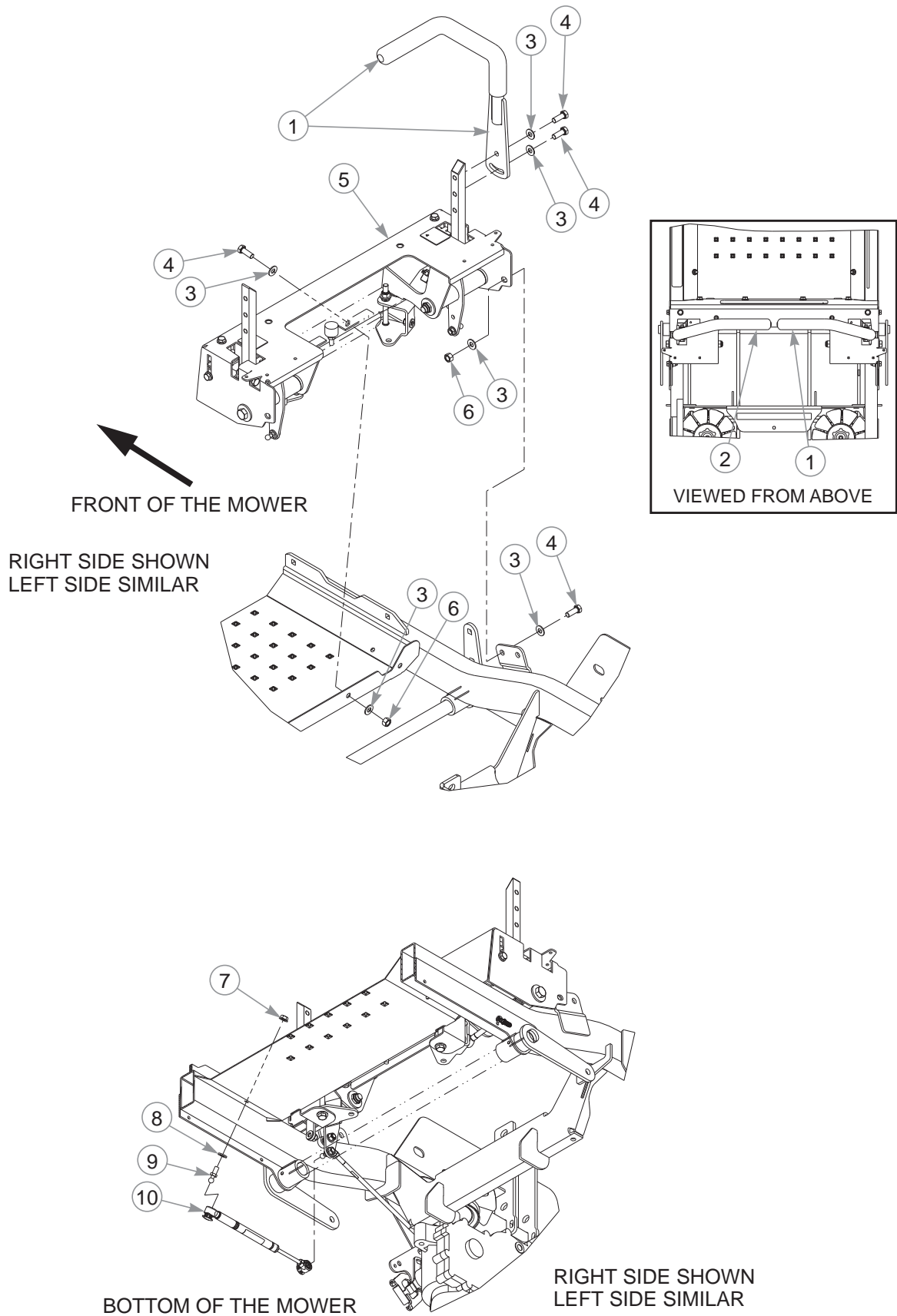


INDEX NO.	PART NO.	QTY.	DESCRIPTION
1	601941	1	FAN/PULLEY KIT
2	605608	1	TRANSMISSION FITTING
3	605778	1	RTN, LEFT
	605779	1	RTN, RIGHT (NOT SHOWN)
4	604903	1	HG RTN SPRING
5	600976	1	OIL FILTER
6	601433	1	4-BOLT HUB KIT (INCLUDES NUT)
7	788877	1	HUB NUT
8	600975	1	LS FILTER GUARD KIT (WITH BOLTS)
	600974	1	RS FILTER GUARD KIT (NOT SHOWN)
9	603572	1	CHARGE COVER KIT (WITH BOLTS)
10	601221	1	BRAKE ARM
11	600972	1	RETAINING CLIP
12	603223	1	O-RING (NOT SHOWN)

---

**This page intentionally left blank.**

# Steering



---

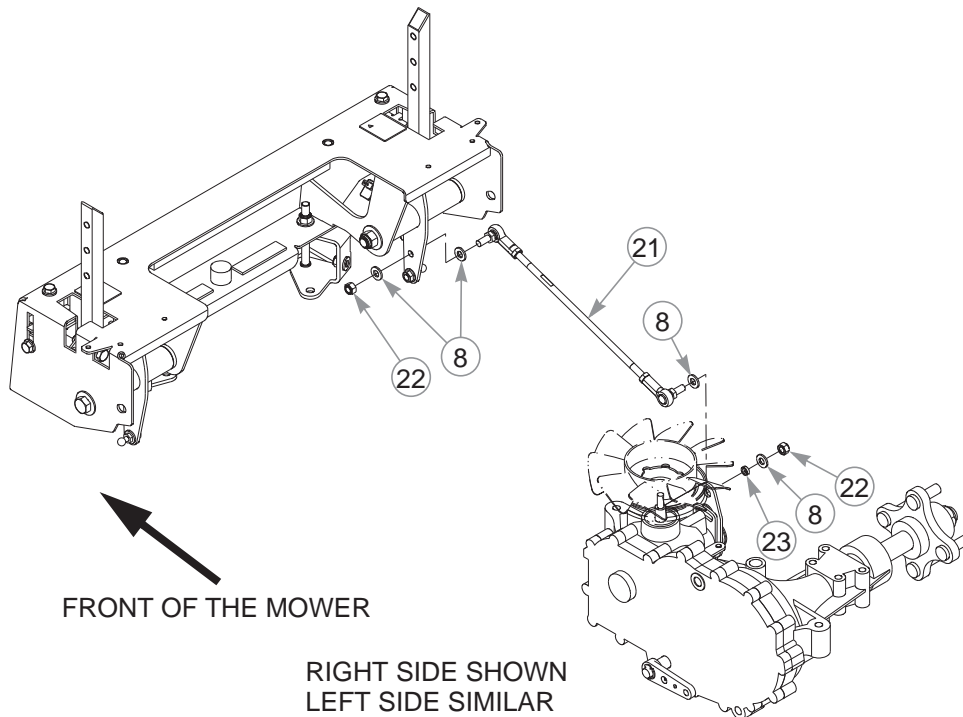
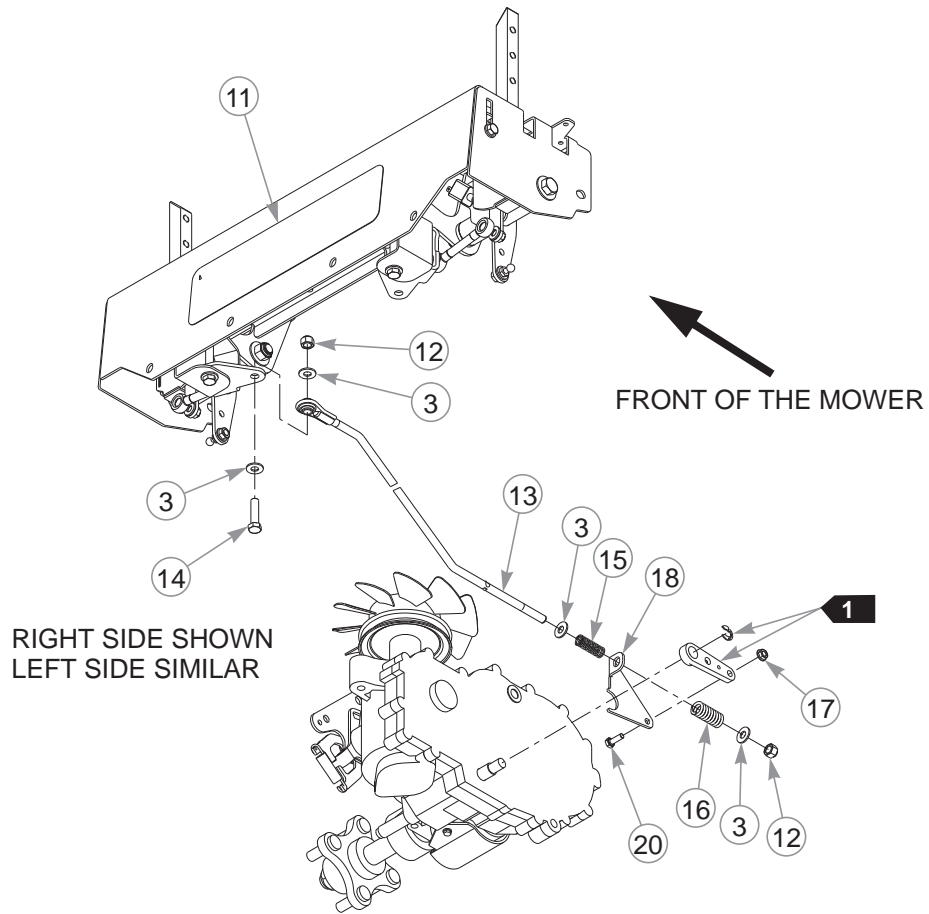
# **Steering**

INDEX NO.	PART NO.	QTY.	DESCRIPTION
1	605383	1	STEERING BAR RS (WITH GRIP)
	781260	1	STEERING BAR GRIP
2	605384	1	STEERING BAR LS (WITH GRIP)
3	767954	24	FW .379 X .813 X .063
4	036244	10	CS .375-16 X 1.00 HX G5
5	N/A	1	STEERING ASSEMBLY
6	054502	6	NT .375-16 HX G5 ZNY
7	016832	2	NT .312-18 HX FLK ZNYC
8	768523	10	FW .343 X .687 X .051/.080H
9	781922	2	BALL STUD
10	603983	2	DAMPER

---

## **NOTES:**

# Steering



---

# **Steering**

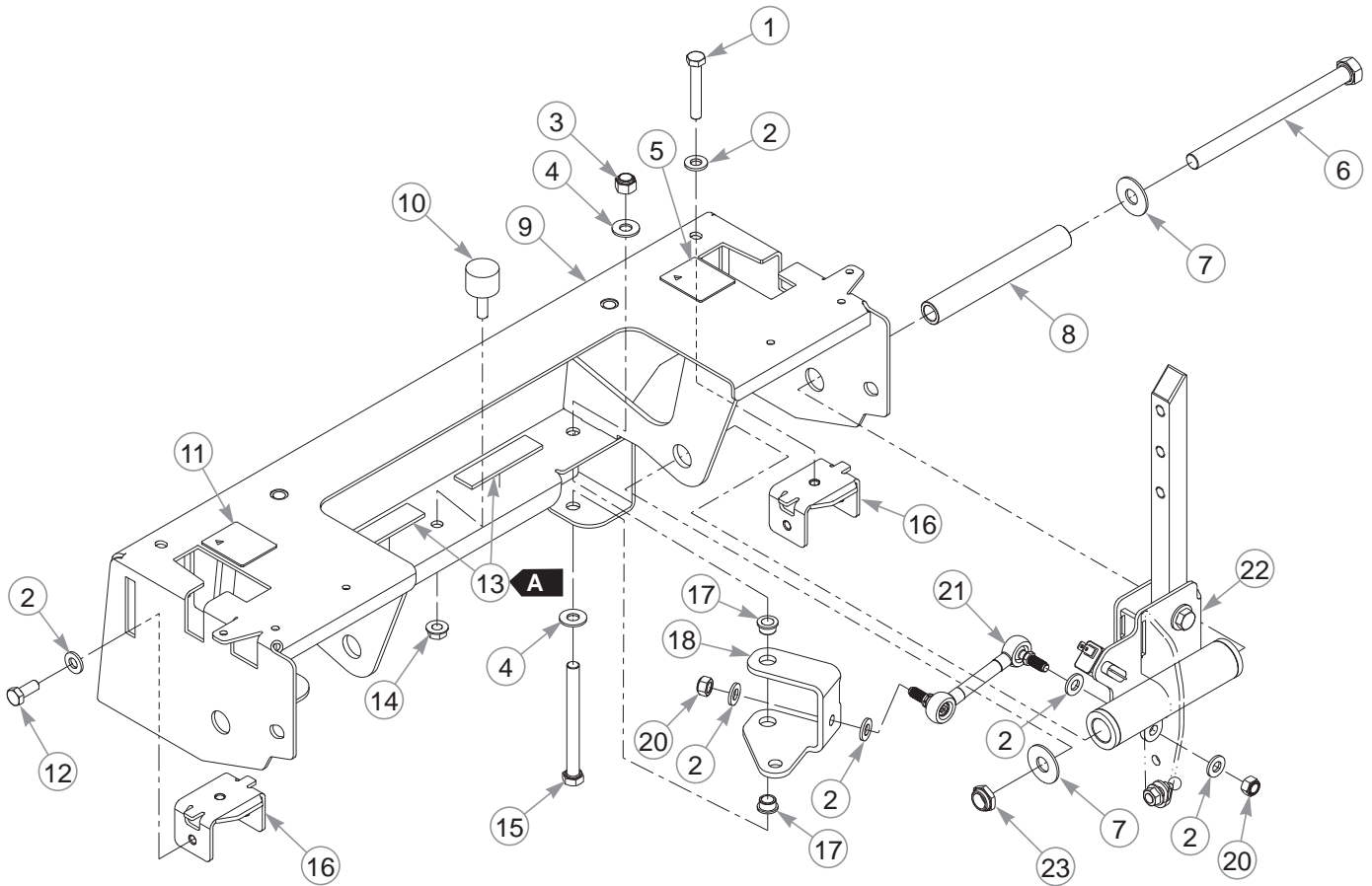
INDEX NO.	PART NO.	QTY	DESCRIPTION
11	605192	1	DECAL
12	086660	4	NT .375-16 HX G5 ZY NL
13	605145	2	BRAKE ROD ASSEMBLY
14	080655	2	CS .375-16 X 1.50 HX G5
15	601131	2	SPRING
16	601051	2	OVERTRAVEL SPRING
17	016816	2	NT .250-20 HX FL LK ZNY
18	120671	1	RS BRAKE SPRING LINK
19	120672	1	LS BRAKE SPRING LINK (NOT SHOWN)
20	055939	2	CS .250-20 X .75 HX G5
21	600981	2	PUMP ROD
22	023655	4	NT .312-24 HX NL G5
23	604456	2	SPACER

---

## **NOTES:**

1. Part of the transmission.

# Steering Assembly




RIGHT SIDE SHOWN  
LEFT SIDE SIMILAR



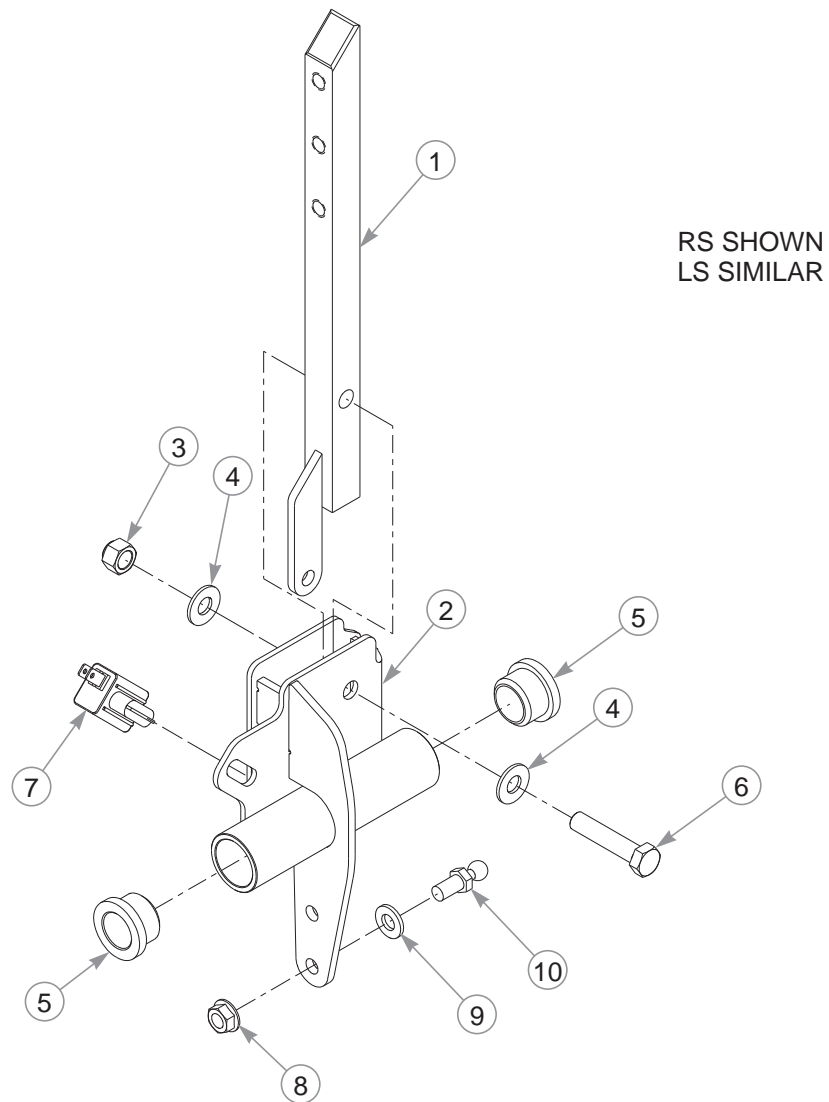
# Steering Assembly

INDEX NO.	PART NO.	QTY.	DESCRIPTION
1	064345	2	CS .312-18 X 2.00 HX G5
2	768523	12	FW .343 X .687 X .051/.080H
3	086660	2	NT .375-16 HX G5 ZY NL
4	767954	4	FW .379 X .813 X .063
5	785220	1	RS STEERING DECAL
6	042630	2	CS .500-13 X 6.50 HX G5 Z
7	712976	4	FW 0.531 X 1.375 X 0.125
8	119811	2	SPACER
9	552896	1	STEERING COVER (WITH DECALS)
10	605542	1	ISOLATOR
11	785139	1	LS STEERING DECAL
12	034280	2	CS .312-18 X .75 HX G5
13	033035	6"	WEATHERSTRIP
14	016832	1	NT .312-18 HX FLK ZNYC
15	725796	2	CS .375-16 X 4.00 HX G8 Z
16	605518	2	STEERING STOP
17	765339	4	BUSHING
18	119813	1	RS BRAKE BELL CRANK
19	119812	1	LS BRAKE BELL CRANK (NOT SHOWN)
20	058776	4	NT .312-18 HX ZY NL
21	604179	2	BRAKE ROD
22	N/A	1	STEERING BOX ASSEMBLY
23	707398	2	NT .500-13 JAM NY LK

## NOTES:

WEATHERSTRIP LENGTHS	
	3"

# Steering Box Assembly



INDEX NO.	PART NO.	QTY.	DESCRIPTION
1	119807	1	STEER LEVER
2	119750	1	LS STEER PIVOT
	119749	1	RS STEER PIVOT (NOT SHOWN)
3	086660	1	NT .375-16 HX G5 ZY NL
4	767954	2	FW .379 X .813 X .063
5	781153	2	BUSHING
6	705178	1	CS .375-16 X 1.75 HX G5
7	601087	1	SWITCH
8	016832	1	NT .312-18 HX FLK ZNYC
9	768523	1	FW .343 X .687 X .051/.080H
10	781922	1	BALL STUD

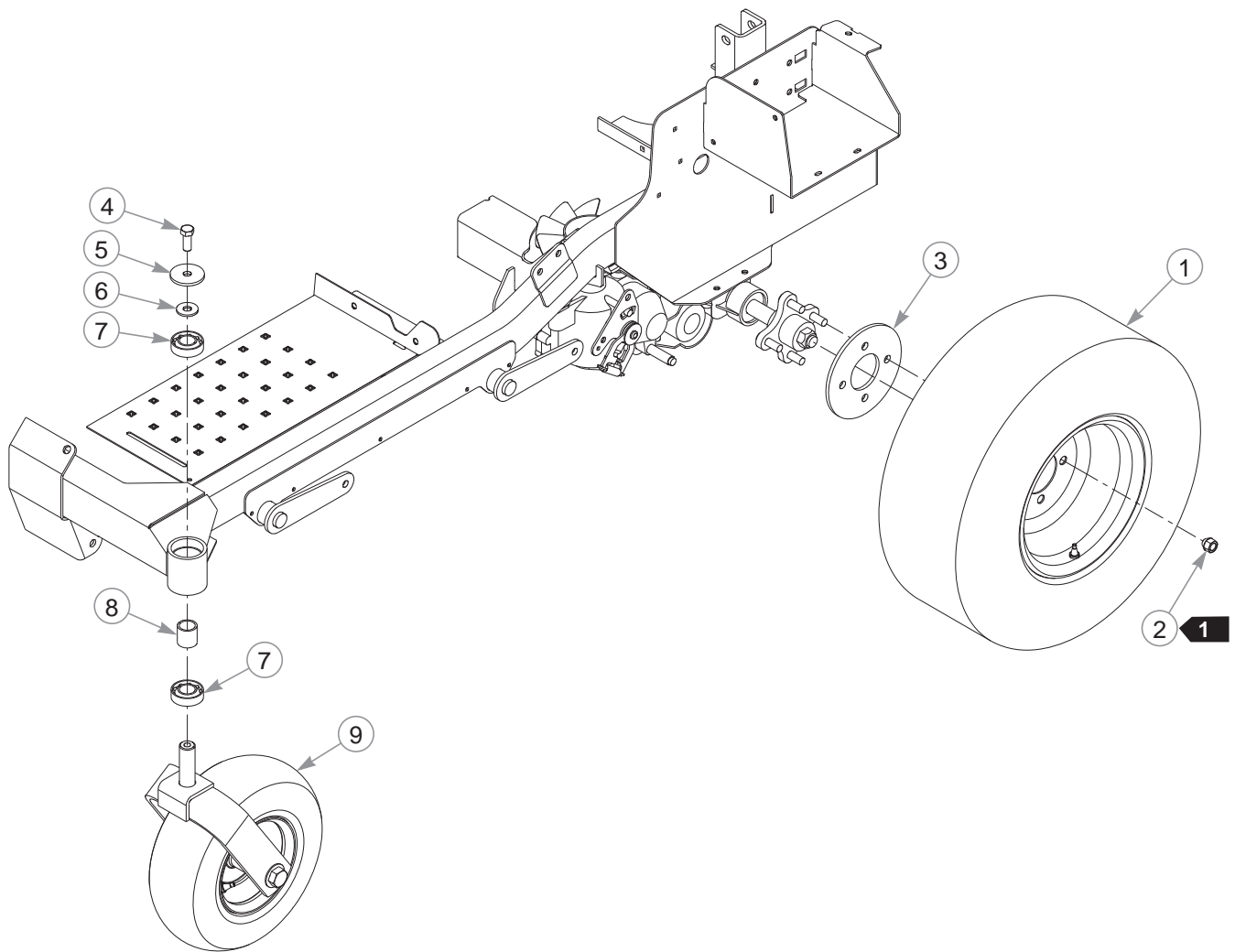
## NOTES:

---

## Section 4

Wheel & Tire . . . . .	4-2
Front Tire Breakdown—13 X 5 . . . . .	4-4
Front Tire Breakdown—13 X 6.5 . . . . .	4-6
Drive Wheel Breakdown . . . . .	4-8

# Wheel & Tire



---

## **Wheel & Tire**

INDEX NO.	PART NO.	QTY.	DESCRIPTION
1	605486	2	TIRE/WHEEL ASSEMBLY 22 X 9.5-10 (48" MOWERS)
	605739	2	TIRE/WHEEL ASSEMBLY 22 X 11-10 (54/60" MOWERS)
2	061077	8	WHEEL NUT
3	111875	2	WHEEL BACKUP PLATE
4	705954	2	CS .500-13 X 1.25 HX G5
5	344267	2	FW .510 X 2.15 X .187 SPL
6	712976	2	FW .531 X 1.375 X .125 ZNY
7	784223	4	BEARING
8	784603	2	SPACER
9	N/A	1	FRONT TIRE ASSEMBLY

---

### **NOTES:**

1. Torque to 65–75 ft-lbs.



---

## **Front Tire Breakdown—13 X 5**

INDEX NO.	PART NO.	QTY.	DESCRIPTION
1	190024	1	FORK
2	786731	1	CS .750-10 X 8.00 HX G5
3	025296	2	FW .760 X 1.625 X .08 ZNYC
4	061101	1	NT .750-10 HX ZY NL
5	605049	1	TIRE/WHEEL 13 X 5.00
6	605039	1	TIRE 13 X 5.00
7	786103	2	WHEEL BEARING
8	605050	1	WHEEL 6 X 3.25 (BLACK)
9	019521	1	TIRE VALVE

---

### **NOTES:**





---

## ***Front Tire Breakdown—13 X 6.5***

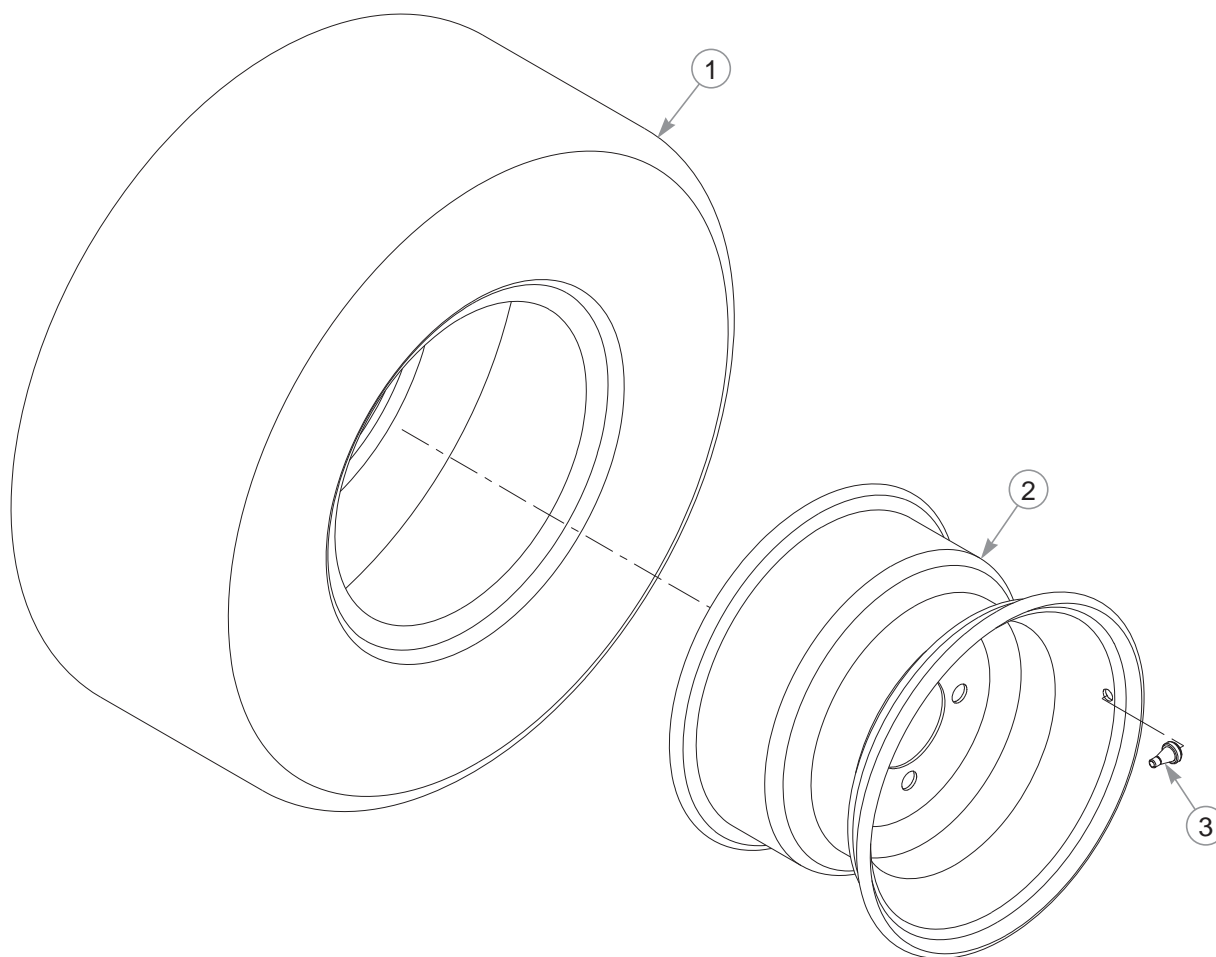
INDEX NO.	PART NO.	QTY	DESCRIPTION
1	190175	1	FORK
2	041475	1	CS .750-10 X 9.50 HX ZY
3	025296	2	FW .760 X 1.625 X .08 ZNYC
4	061101	1	NT .750-10 HX ZY NL
5	605199	1	TIRE/WHEEL ASSY 13 X 6.50
6	604843	1	TIRE, 13 X 6.5
7	786103	2	WHEEL BEARING
8	605200	1	WHEEL, 6 X 4.50 (BLACK)
9	019521	1	VALVE STEM

---

### **NOTES:**

---

## **Drive Wheel Breakdown**



---

### **605486 TIRE & WHEEL ASSEMBLY (48" MOWERS)**

<b>INDEX NO.</b>	<b>PART NO.</b>	<b>QTY.</b>	<b>DESCRIPTION</b>
1	605485	1	TIRE 22 X 9.5-10
2	605151	1	WHEEL 10 X 7 BLACK
3	019521	1	TIRE VALVE

### **605739 TIRE & WHEEL ASSEMBLY (54" & 60" MOWERS)**

<b>INDEX NO.</b>	<b>PART NO.</b>	<b>QTY.</b>	<b>DESCRIPTION</b>
1	605737	1	TIRE 22 X 11-10
2	603737	1	WHEEL 10 X 8.5 BLACK
3	019521	1	TIRE VALVE

---

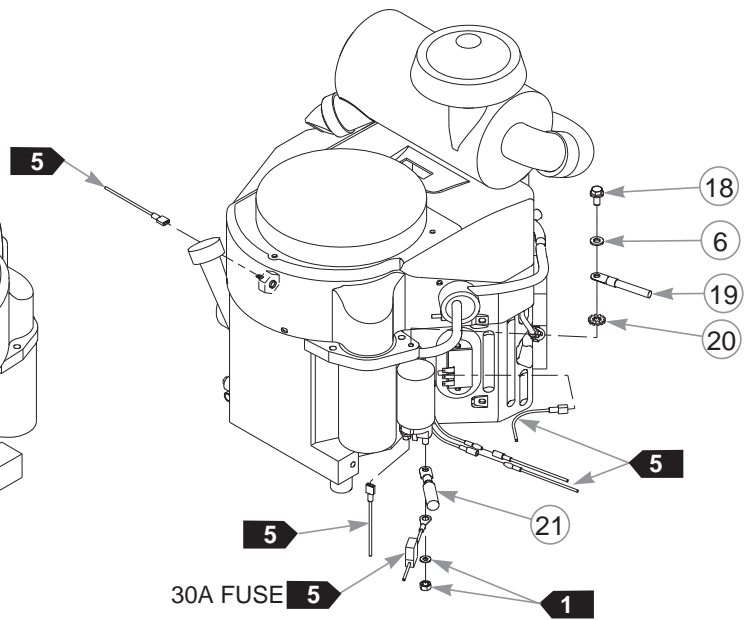
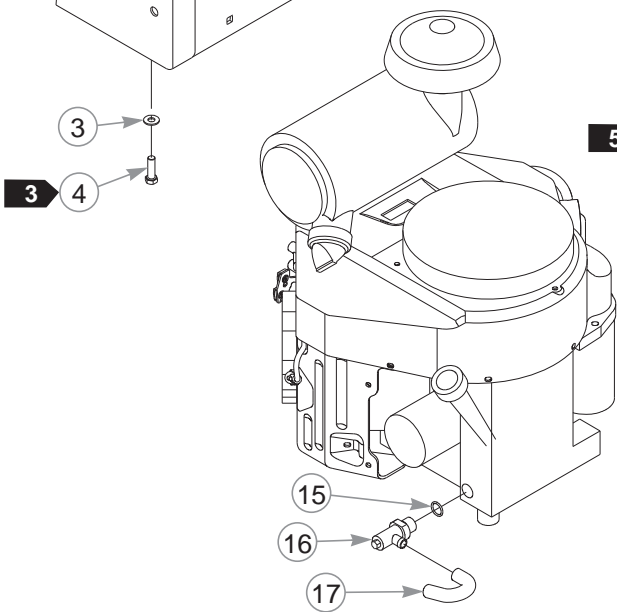
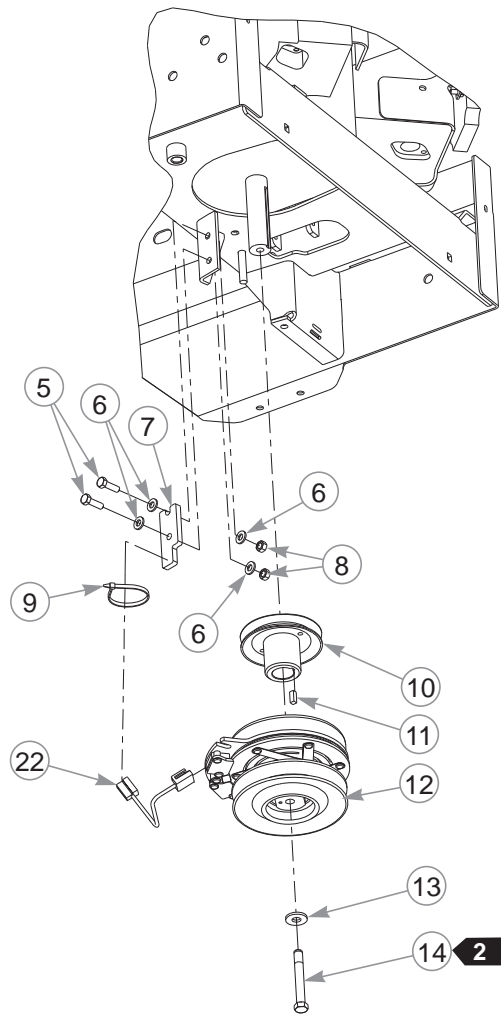
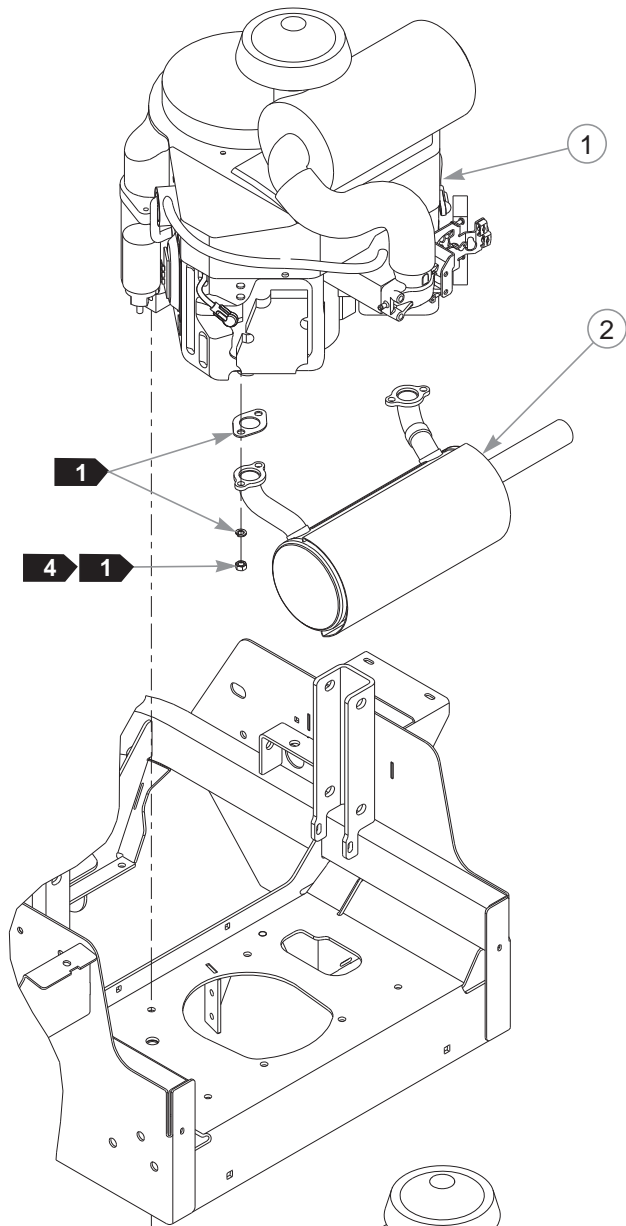
### **NOTES:**

---

## Section 5

Engine .....	5-2
Engine Service Parts .....	5-4
Fuel System .....	5-6

# Engine



---

# **Engine**

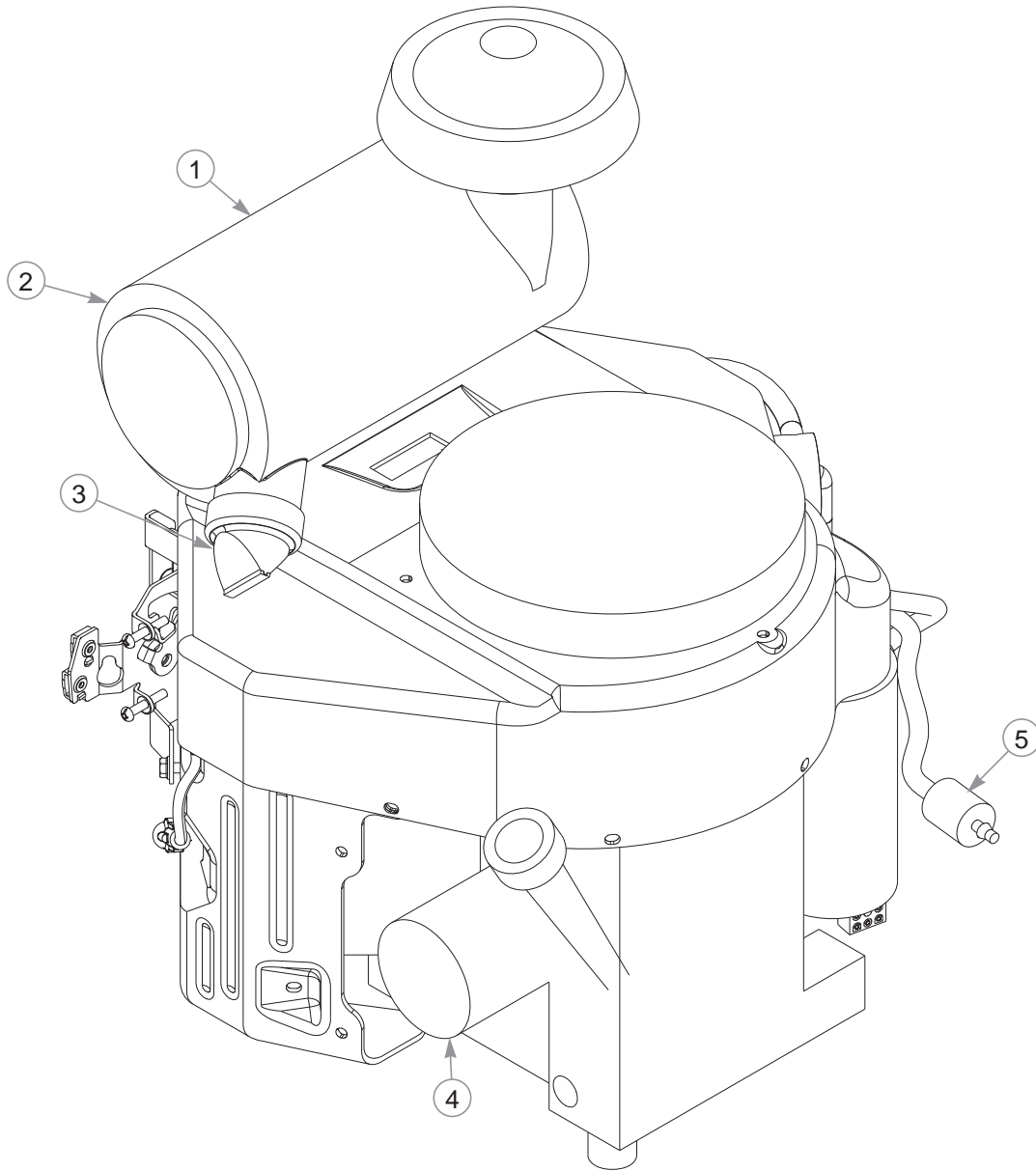
INDEX NO.	PART NO.	QTY.	DESCRIPTION
1	N/A	1	ENGINE, KAWASAKI FX691V & FX730V
2	604250	1	MUFFLER
3	767954	4	FW .379 X .813 X .063
4	602580	4	CS .375-16 X 1.25 HX G8 P85
5	036236	2	CS .312-18 X 1.00 HX G5
6	768523	5	FW .343 X .687 X .051/.080H
7	113946	1	CLUTCH ANCHOR
8	034272	2	NT .312-18 HX G5
9	000331	4	WIRE TIE
10	605490	1	PULLEY, ENG 4.818OP
11	712372	1	KEY 1/4 SQ X 0.66 LG
12	121809K	1	CLUTCH KIT
13	602680	1	FW .453 X 1.12 X .119 HRD
14	601834	1	CS .437-20 X 3.25 HX G5 P85
15	604369	1	O-RING
16	604350	1	OIL DRAIN VALVE
17	605317	1	OIL DRAIN HOSE
18	720516	1	CS M8 X 1.25 X 16 HX FL 10.9
19	601841	1	NEGATIVE BATTERY CABLE
20	029876	1	LW .325 INT-EXT TOOTH
21	785063	1	POSITIVE BATTERY CABLE
22	791251	1	CLUTCH HARNESS PIGTAIL

---

## **NOTES:**

1. Supplied with the engine.
2. Torque to 45–48 ft-lbs.
3. Torque to 30–35 ft-lbs.
4. Torque to 22 ft-lbs.
5. Part of the wire harness.

# **Engine Service Parts**



---

INDEX NO.	PART NO.	QTY.	DESCRIPTION
1	785261	1	MAIN AIR FILTER
2	785279	1	SAFETY AIR FILTER
3	763318	1	VACUATOR VALVE
4	602581	1	OIL FILTER
5	068478	1	IN-LINE FUEL FILTER

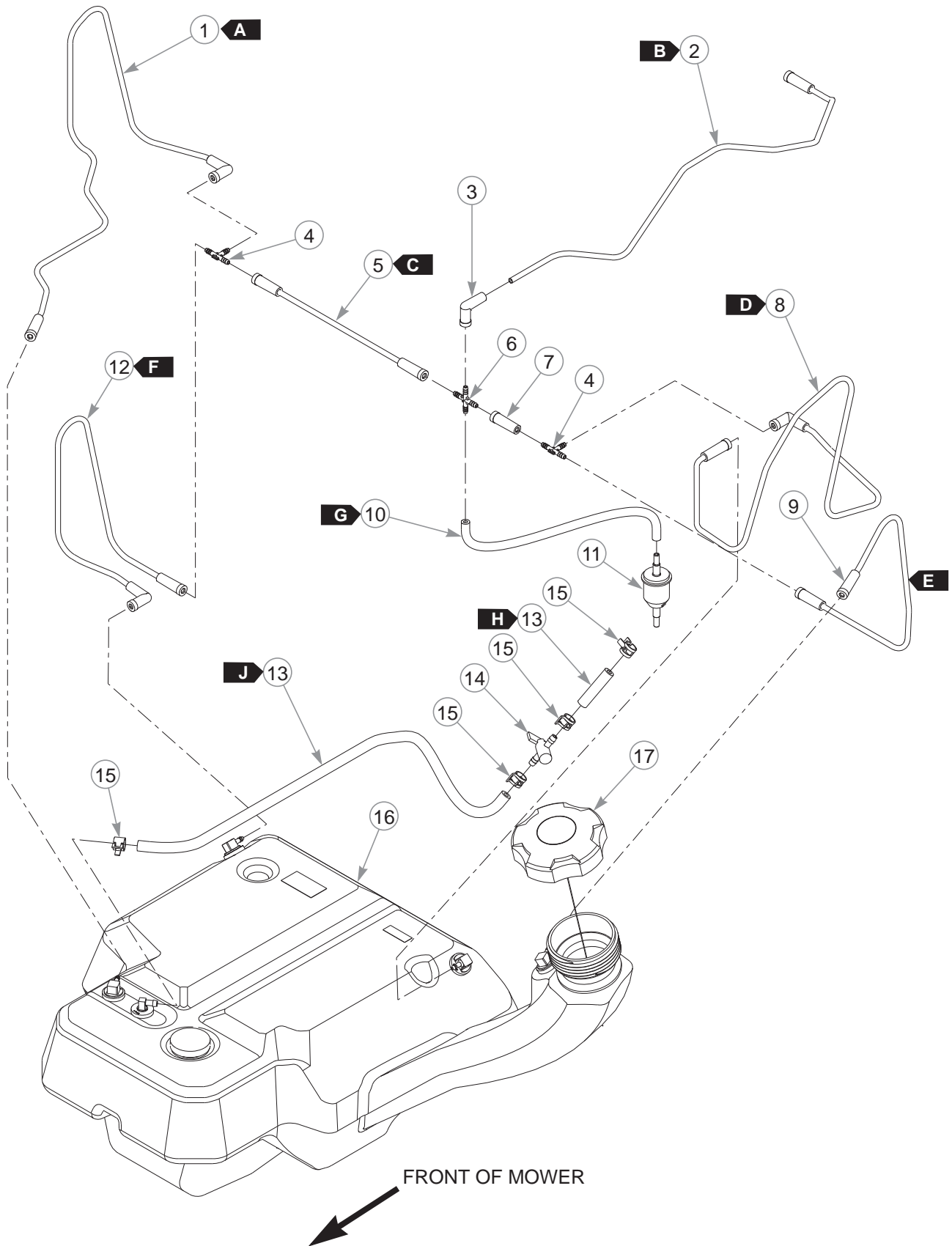
---

## **NOTES:**

---

**This page intentionally left blank.**

# Fuel System





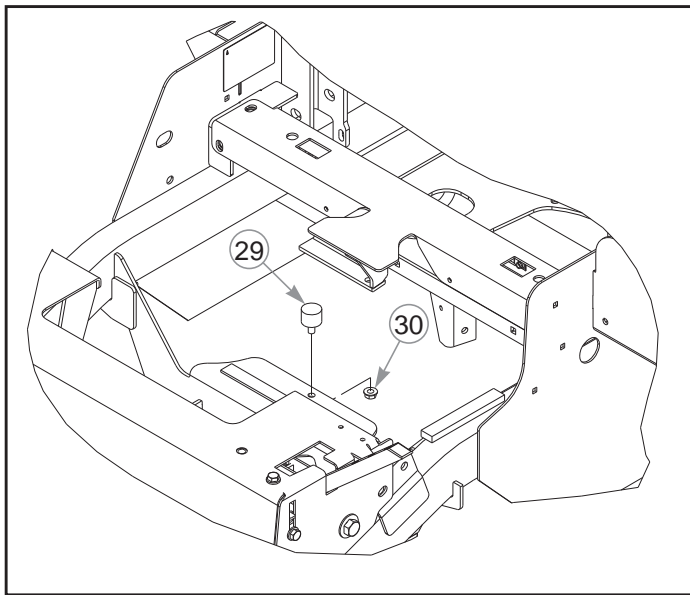
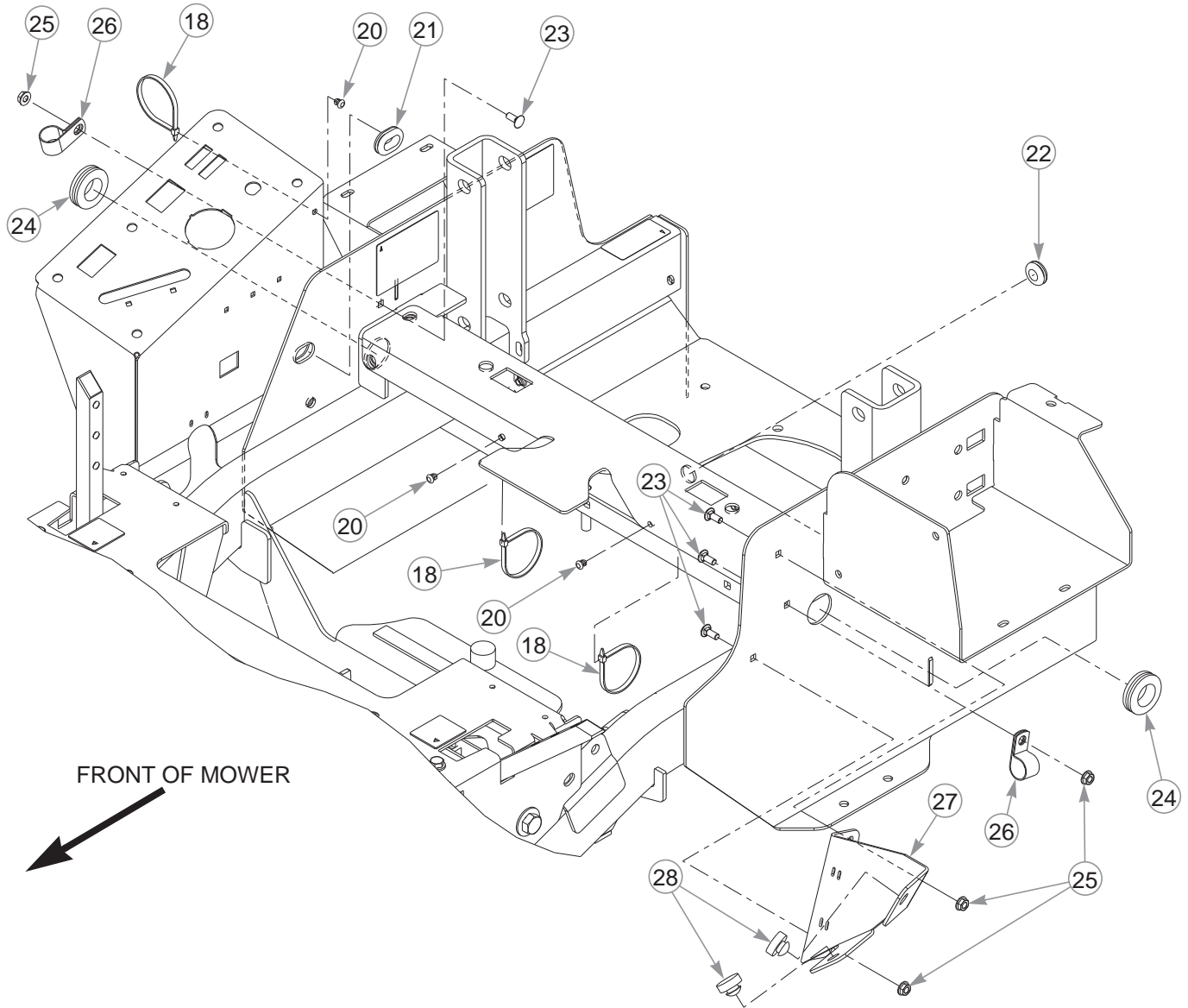
# Fuel System

INDEX NO.	PART NO.	QTY.	DESCRIPTION
1	605491	1	3/16" FORMED VAPOR LINE
2	605493	1	3/16" FORMED VAPOR LINE
3	605565	1	3/16" ELBOW BOOT
4	605690	2	3/16" PLASTIC TEE
5	605535	1	3/16" FORMED VAPOR LINE
6	605425	1	3/16" PLASTIC CROSS
7	605564	1	3/16" TO 3/16" STRAIGHT BOOT
8	605534	1	3/16" FORMED VAPOR LINE
9	605492	1	3/16" FORMED VAPOR LINE
10	603326	11.50"	3/16" VAPOR LINE
11	604323	1	VAPOR SYSTEM FILTER
12	605533	1	3/16" FORMED VAPOR LINE
13	015818	23"	1/4" FUEL LINE
14	605601	1	INLINE FUEL SHUT-OFF VALVE
15	000323	4	HOSE CLAMP
16	605432	1	FUEL TANK ASSEMBLY
17	603807	1	RATCHETING GAS CAP, 3.5"

## NOTES:

FUEL & VAPOR LINE LENGTHS		
<b>A</b>	—	FRONT RIGHT SIDE PORT TO TEE (VAPOR)
<b>B</b>	—	ENGINE TO CROSS (VAPOR)
<b>C</b>	—	TEE TO CROSS (VAPOR)
<b>D</b>	—	LEFT BACK PORT TO TEE (VAPOR)
<b>E</b>	—	FILLER NECK PORT TO TEE (VAPOR)
<b>F</b>	—	RIGHT BACK PORT TO TEE (VAPOR)
<b>G</b>	11.50"	CROSS TO FILTER (VAPOR)
<b>H</b>	2"	VALVE TO ENGINE (FUEL)
<b>J</b>	21"	TANK TO VALVE (FUEL)

# Fuel System



---

## **Fuel System**

INDEX NO.	PART NO.	QTY.	DESCRIPTION
18	000331	8	WIRE TIE
19	602725	1	WIRE TIE
20	604307	3	PUSH BUTTON MOUNT
21	047456	1	GM .750 X .188 X 1.00 X .12
22	080358	1	GM .50 X 1.00 X .75 X .12
23	601503	4	CB .250-20 X .625 ZNYC
24	706531	2	GM 1.12 X 1.75 X 1.37 X .12
25	016816	4	NT .250-20 HX FL LK ZNY
26	043570	2	LOOP CLAMP
27	121056	1	FUEL TANK NECK SUPPORT
28	781880	2	BUMPER
29	605542	1	ISOLATOR
30	016832	1	NT .312-18 HX FLK ZNYC
31	000430	1	WIRE TIE

---

### **NOTES:**

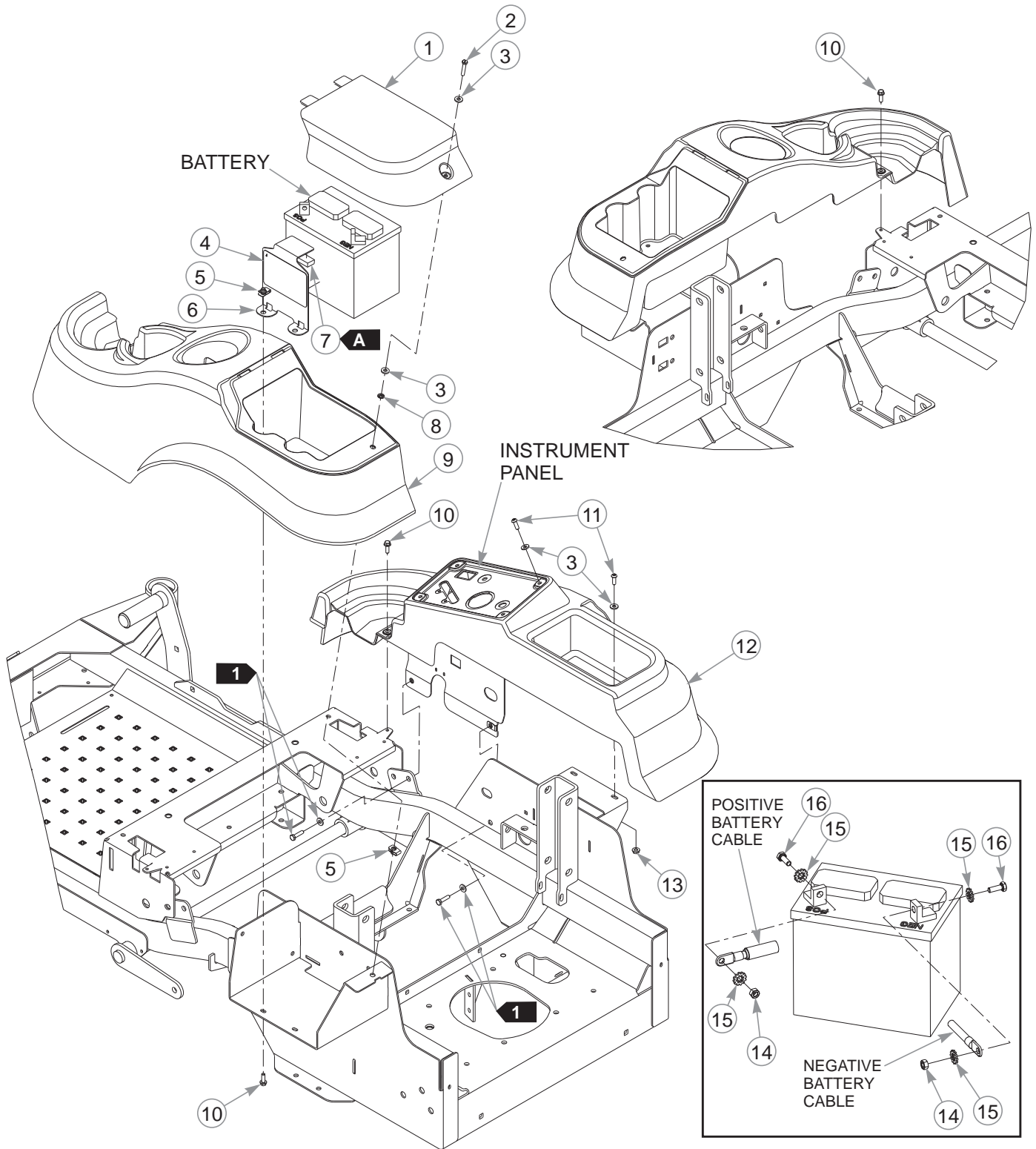


---

## Section 6

Battery & Fenders .....	6-2
Instrument Panel .....	6-4

# Battery & Fenders



---

## **Battery & Fenders**

INDEX NO.	PART NO.	QTY.	DESCRIPTION
1	605558	1	LS FENDER LID
2	605627	1	CS .250-20 X 1.25 HX
3	605628	8	FW .281 X .625 X .066
4	601815	1	BATTERY WARNINGS DECAL
5	601982	3	CN .250-20 X .15 MAX THK
6	552858	1	BATTERY HOLD DOWN (WITH SEAL)
7	713198	2.5"	SEAL 3/8 X 3/4
8	605629	1	UNTHREADED PN .250 ID
9	605524	1	LS FENDER
10	604324	4	CS .250-20 X .75 HX FLG
11	605473	6	CS .25-20 BH TX BZ
12	605523	1	RS FENDER
13	016816	2	NT .250-20 HX FL LK ZNY
14	024927	2	NT .250-20 HX G5 ZNYC
15	029868	4	LW .250 INT-EXT TOOTH Z
16	055939	2	CS .250-20 X .75 HX G5

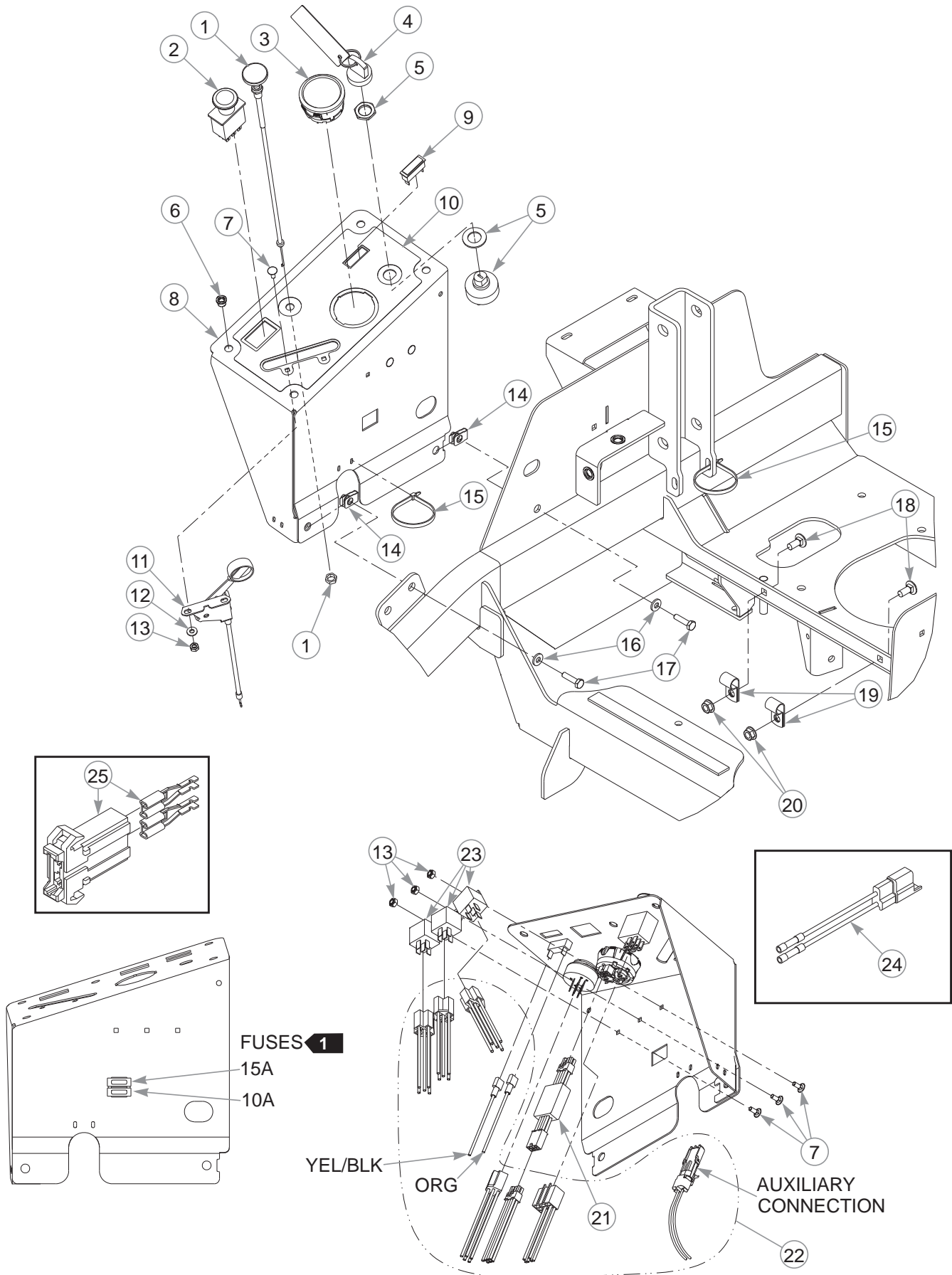
---

### NOTES:

SEAL LENGTH	
	2.5"

1. Part of the instrument panel assembly.
2. When performing service on the mower, disconnect the negative battery cable (black) and do not reconnect it to the battery until ready to start the engine.

# Instrument Panel





---

## **Instrument Panel**

INDEX NO.	PART NO.	QTY.	DESCRIPTION
1	786657	1	CHOKE CABLE
2	776476	1	PTO SWITCH
3	605483	1	FUEL GAUGE/HOUR METER
4	605808	1	KEY ASSEMBLY
5	045898	1	IGNITION SWITCH
6	808477	4	1/4-20 THREAD RIVET NUT
7	601098	5	CB 10-24 X .500 ZYNC
8	552855	1	INSTRUMENT PANEL (WITH DECAL)
9	712257	1	RED INDICATOR LIGHT
10	605605	1	INSTRUMENT PANEL DECAL
11	778365	1	THROTTLE CABLE
12	704932	2	FW .219 X .500 X .048
13	059832	5	NT #10-24 HX NL ZN
14	601982	2	CN .250-20 X .15 MAX THK
15	000331	3	WIRE TIE
16	768515	2	FW .281 X .625 X .066
17	056077	2	CS .250-20 X 1.00 HX G5
18	016253	2	CB .312-18 X .75 FUL ZN
19	000398	2	LOOP CLAMP
20	016832	2	NT .312-18 HX FLK ZNYC
21	605554	1	WIRE HARNESS ADAPTER
22	605458	1	WIRE HARNESS
23	601053	2	SEALED RELAY (WITH BRACKET)
24	114052	1	CLUTCH CONNECTOR REPAIR KIT
25	601047	1	FUSE HOLDER

---

### **NOTES:**

1. Part of the wire harness.

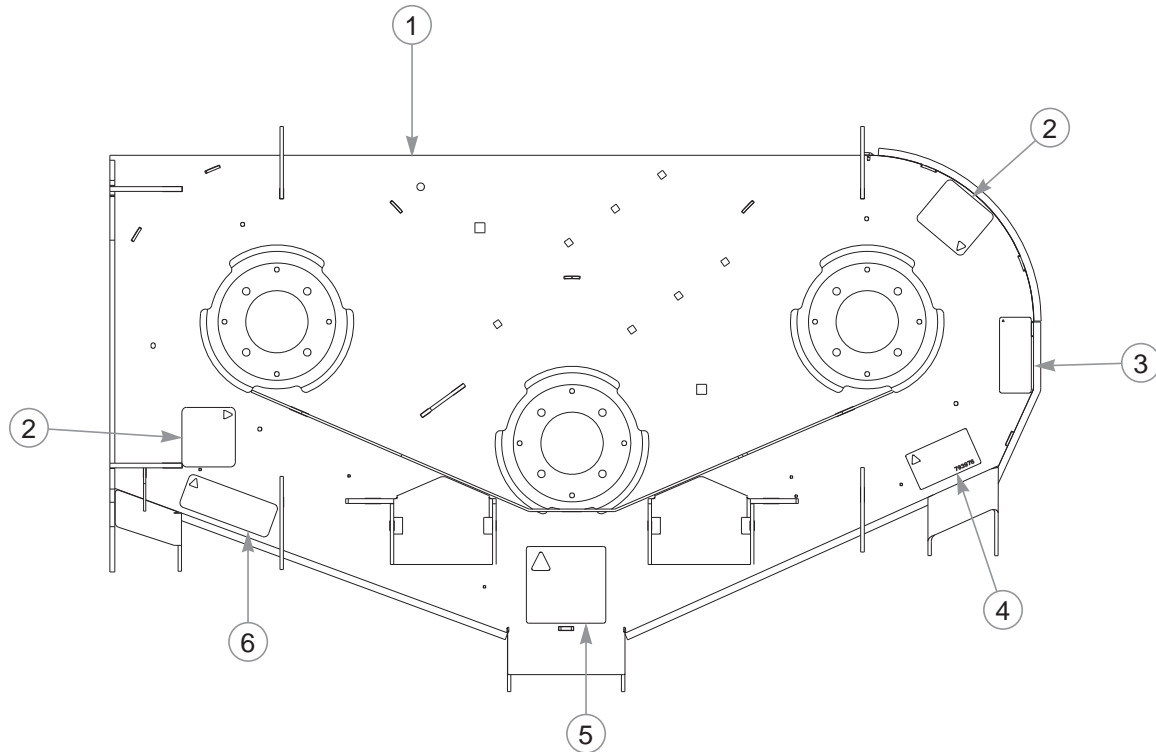
---

---

## Section 7

48" Service Deck . . . . .	7-2
48" Deck Pulleys & Spindles . . . . .	7-4
48" Deck . . . . .	7-6
54" Service Deck . . . . .	7-8
54" Deck Pulleys & Spindles . . . . .	7-10
54" Deck . . . . .	7-12
60" Service Deck . . . . .	7-14
60" Deck Pulleys & Spindles . . . . .	7-16
60" Deck . . . . .	7-18
Deck Lift. . . . .	7-20

# 48" Service Deck



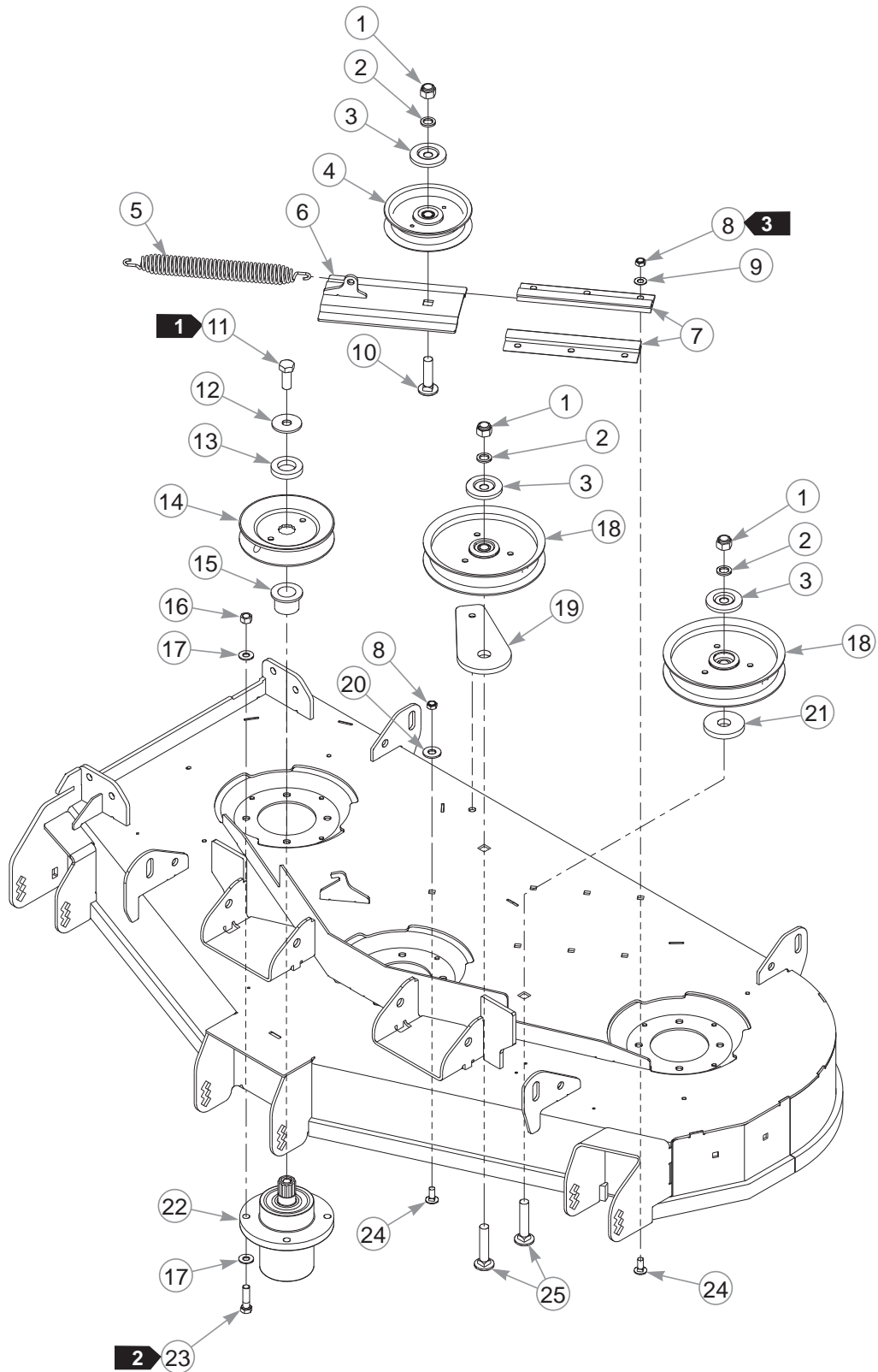
INDEX NO.	PART NO.	QTY.	DESCRIPTION
1	552875	1	48" DECK (WITH DECALS)
2	601837	2	DANGER DECAL
3	601892	1	THROWN OBJECTS DECAL
4	793976	1	48" DECK ID DECAL
5	781419	1	BELT ROUTING DECAL
6	601624	1	DISCHARGE CHUTE DECAL

## NOTES:

---

**This page intentionally left blank.**

# 48" Deck Pulleys & Spindles



---

## **48" Deck Pulleys & Spindles**

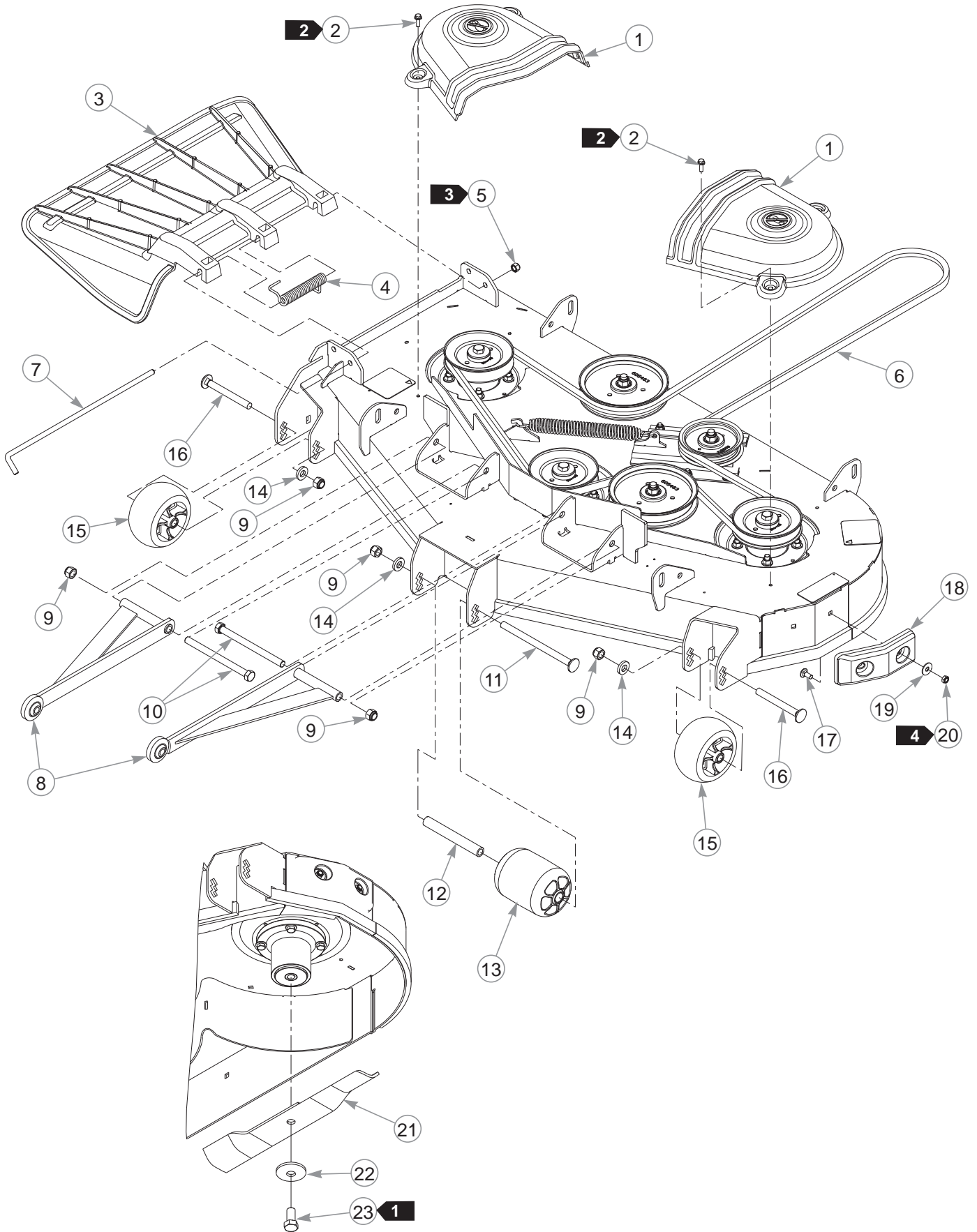
INDEX NO.	PART NO.	QTY.	DESCRIPTION
1	781567	3	NT .500-13 HX G8 ZY NL
2	604486	3	FW .531 X .812 X .089 HD
3	605467	3	DUST SHIELD
4	605512	1	4" IDLER PULLEY
5	122388	1	IDLER SPRING
6	121052	1	TENSIONER SLED
7	604790	2	IDLER SLIDE
8	604251	7	NT .312-18 HX NL JAM G2 ZN
9	604252	6	FW .340 X .675 X .035 ZN
10	604253	1	CB .50-13 X 2.00 STD ZN
11	705954	3	CS .500-13 X 1.25 HX G5
12	798603	3	FW .515 X 1.65 X .125 HD ZY
13	604777	3	SPINDLE SPACER
14	604665	3	DRIVE PULLEY B-SEC
15	605504	3	PULLEY SPACER
16	054502	12	NT .375-16 HX G5 ZNY
17	767954	24	FW .379 X .813 X .063
18	605463	2	6.00" IDLER PULLEY
19	605465	1	IDLER PULLEY MOUNT BASE
20	017129	1	FW .440 X 1.00 X .083 ZNY
21	605508	1	FW .73 X 2.25 X .312
22	605380	3	SPINDLE ASSEMBLY
23	005116	12	CS .375-16 X 1.375 HX G5
24	016253	7	CB .312-18 X .75 FUL ZN
25	604254	2	CB .50-13 X 2.50 STD ZN

---

### **NOTES:**

1. Torque to 73 ft-lbs.
2. Torque to 30 ft-lbs.
3. Torque to 3–6 ft-lbs.

# 48" Deck





---

## **48" Deck**

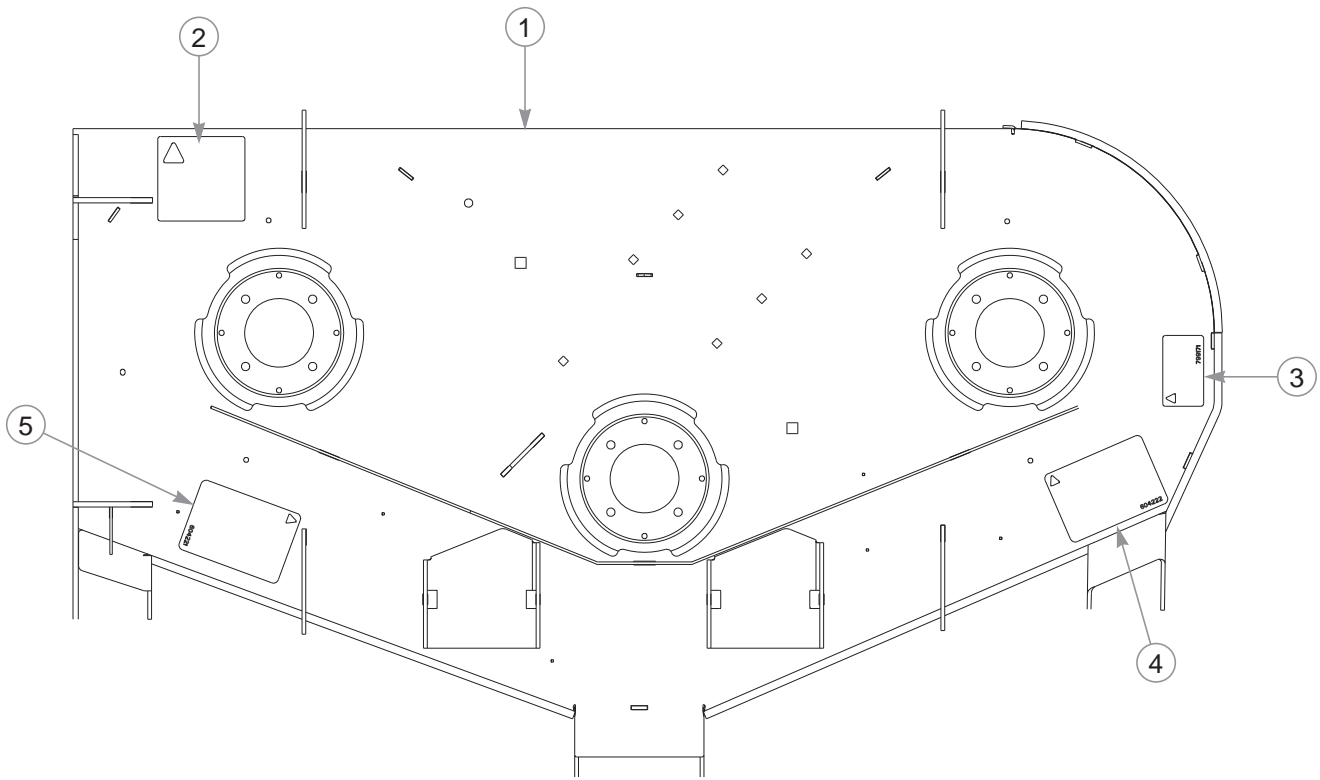
INDEX NO.	PART NO.	QTY.	DESCRIPTION
1	605867	2	PULLEY COVER
2	604324	4	CS .250-20 X .75 HX FLG
3	605469	1	DISCHARGE CHUTE
4	602435	1	TORSION SPRING
5	086660	1	NT .375-16 HX G5 NL
6	791335	1	BELT, B 143" EL
7	602432	1	CHUTE PIN
8	113717	2	PULLER
9	781567	5	NT .500-13 HX G8 ZY NL
10	042630	2	CS .500-13 X 6.50 HX G5 Z
11	602338	1	CB .500-13 X 7.50 STD ZN
12	602344	1	SPACER 5.73
13	602341	1	PLASTIC WHEEL
14	767962	3	FW .531 X 1.063 X .175
15	604780	2	ANTI-SCALP WHEEL
16	602339	2	CB .500-13 X 4.50 STD ZN
17	016253	2	CB .312-18 X .75 FUL ZN
18	605376	1	DECK BUMPER
19	079210	2	FW .344 X 1.00 X .06 ZNYC
20	604251	2	NT .312-18 HX NL JAM G2 ZN
21	606252	3	BLADE, 16.5"-H-F-CW
	601123	3	BLADE, 16.5"-L-F-CW
	796631	3	BLADE, 16.5"-GAT-F-CW
	796623	3	BLADE, 16.5"-MUL-F-CW
22	782474	3	CW .631 X 2.25 X .187 PNT
23	781872	3	CS .625-11 X 1.25 HX G5 Z

---

### **NOTES:**

1. Torque to 118 ft-lbs.
2. Torque to 2–5 ft-lbs on these self-tapping screws.
3. Do not torque; the discharge chute must pivot freely.
4. Torque to 3–6 ft-lbs.

# 54" Service Deck



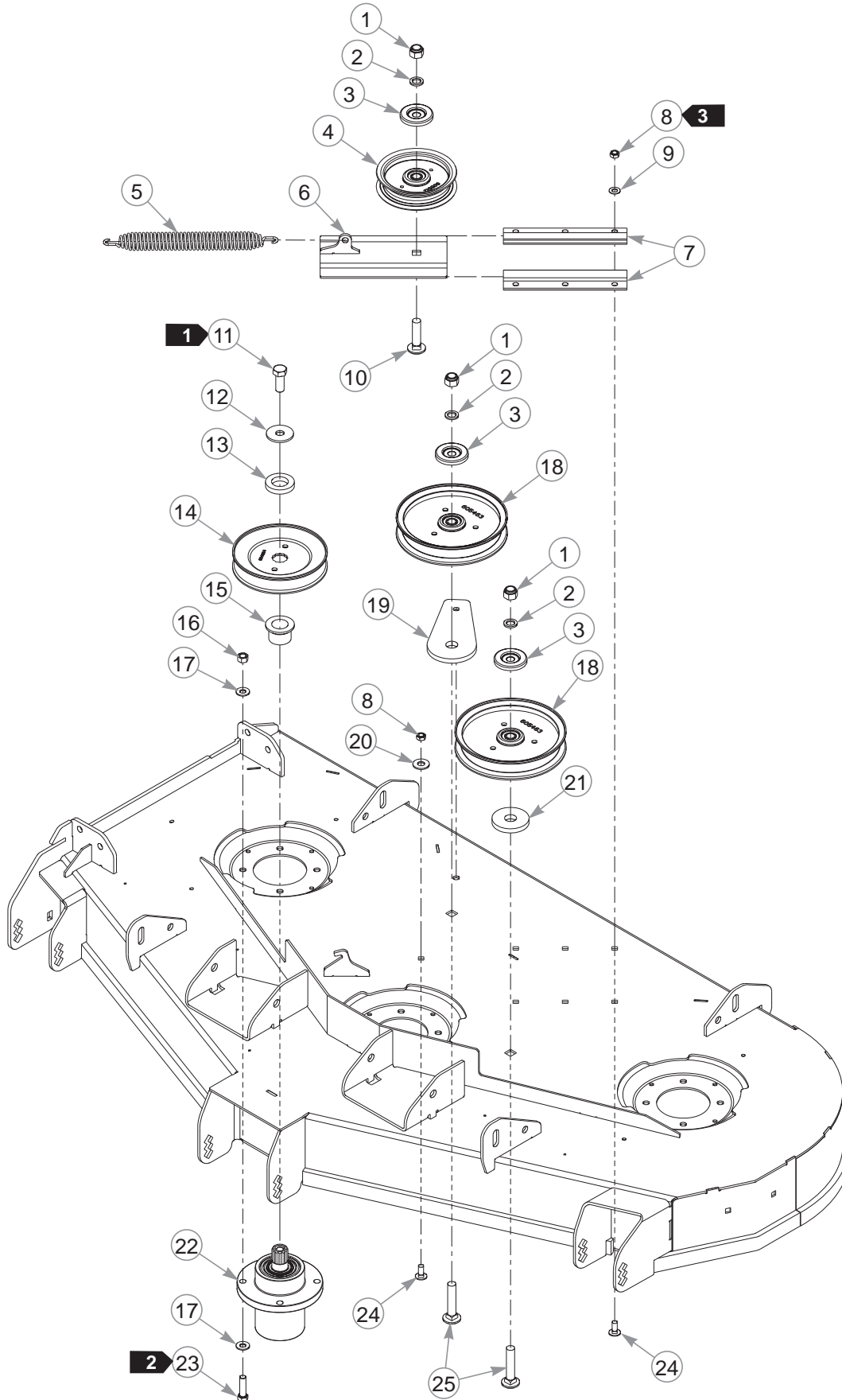
INDEX NO.	PART NO.	QTY.	DESCRIPTION
1	552876	1	54" DECK (WITH DECALS)
2	781419	1	BELT ROUTING DECAL
3	799171	1	54" DECK ID DECAL
4	604222	1	DANGER/OBJECTS DECAL
5	604221	1	DANGER/CHUTE DECAL

## NOTES:

---

**This page intentionally left blank.**

# 54" Deck Pulleys & Spindles



---

## **54" Deck Pulleys & Spindles**

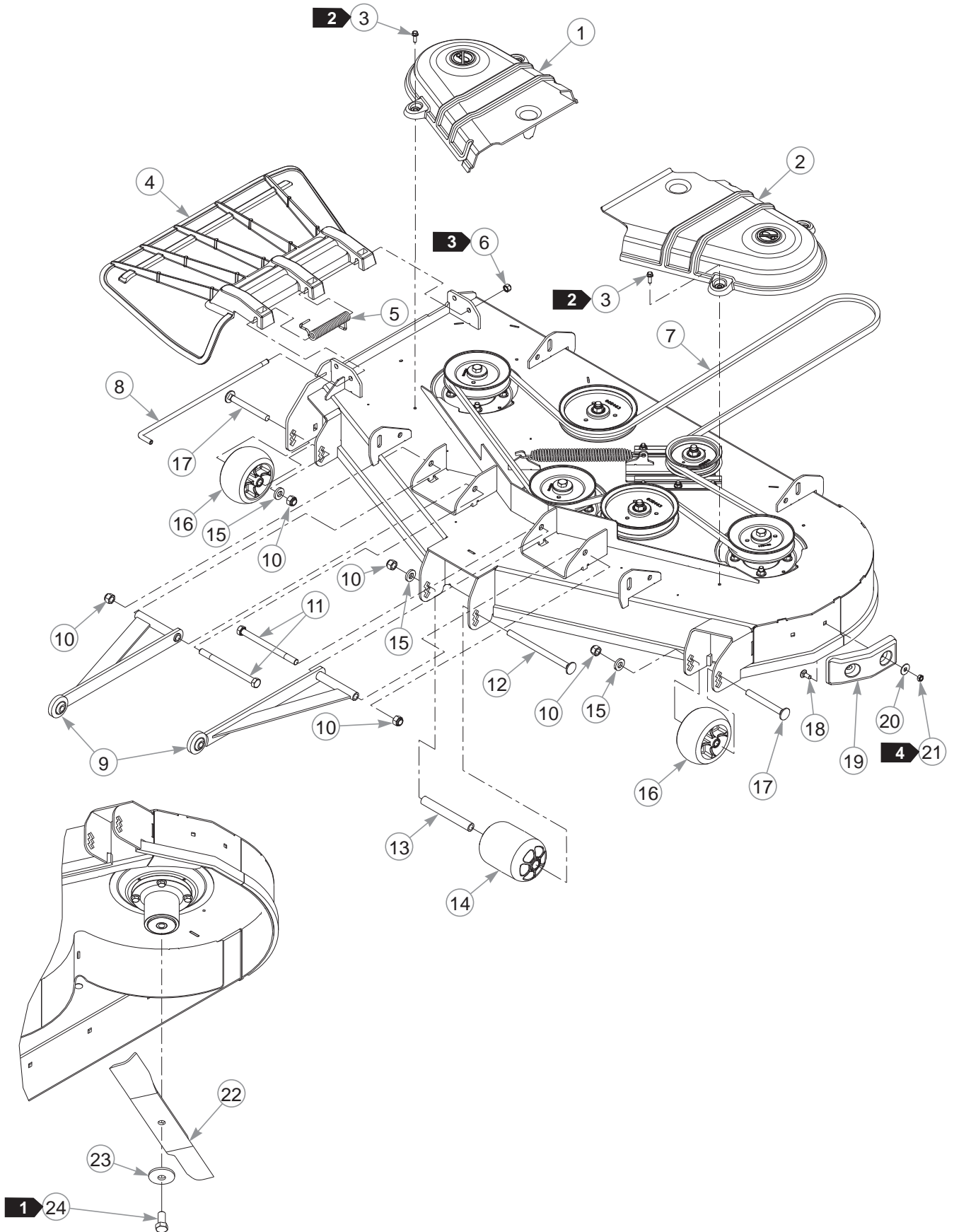
INDEX NO.	PART NO.	QTY.	DESCRIPTION
1	781567	3	NT .500-13 HX G8 ZY NL
2	604486	3	FW .531 X .812 X .089 HD
3	605467	3	DUST SHIELD
4	605512	1	4" IDLER PULLEY
5	122388	1	IDLER SPRING
6	121052	1	TENSIONER SLED
7	604790	2	IDLER SLIDE
8	604251	7	NT .312-18 HX NL JAM G2 ZN
9	604252	6	FW .340 X .675 X .035 ZN
10	604253	1	CB .50-13 X 2.00 STD ZN
11	705954	3	CS .500-13 X 1.25 HX G5
12	798603	3	FW .515 X 1.65 X .125 HD ZY
13	604777	3	SPINDLE SPACER
14	604664	3	PULLEY, DECK DRIVE B-SEC
15	605504	3	PULLEY SPACER
16	054502	12	NT .375-16 HX G5 ZNY
17	767954	24	FW .379 X .813 X .063
18	605463	2	6.00" IDLER PULLEY
19	605465	1	IDLER PULLEY MOUNT BASE
20	017129	1	FW .440 X 1.00 X .083 ZNY
21	605508	1	FW .73 X 2.25 X .312
22	605380	3	SPINDLE ASSEMBLY
23	005116	12	CS .375-16 X 1.375 HX G5
24	016253	7	CB .312-18 X .75 FUL ZN
25	604254	2	CB .50-13 X 2.50 STD ZN

---

### **NOTES:**

1. Torque to 73 ft-lbs.
2. Torque to 30 ft-lbs.
3. Torque to 3–6 ft-lbs.

# 54" Deck



---

## **54" Deck**

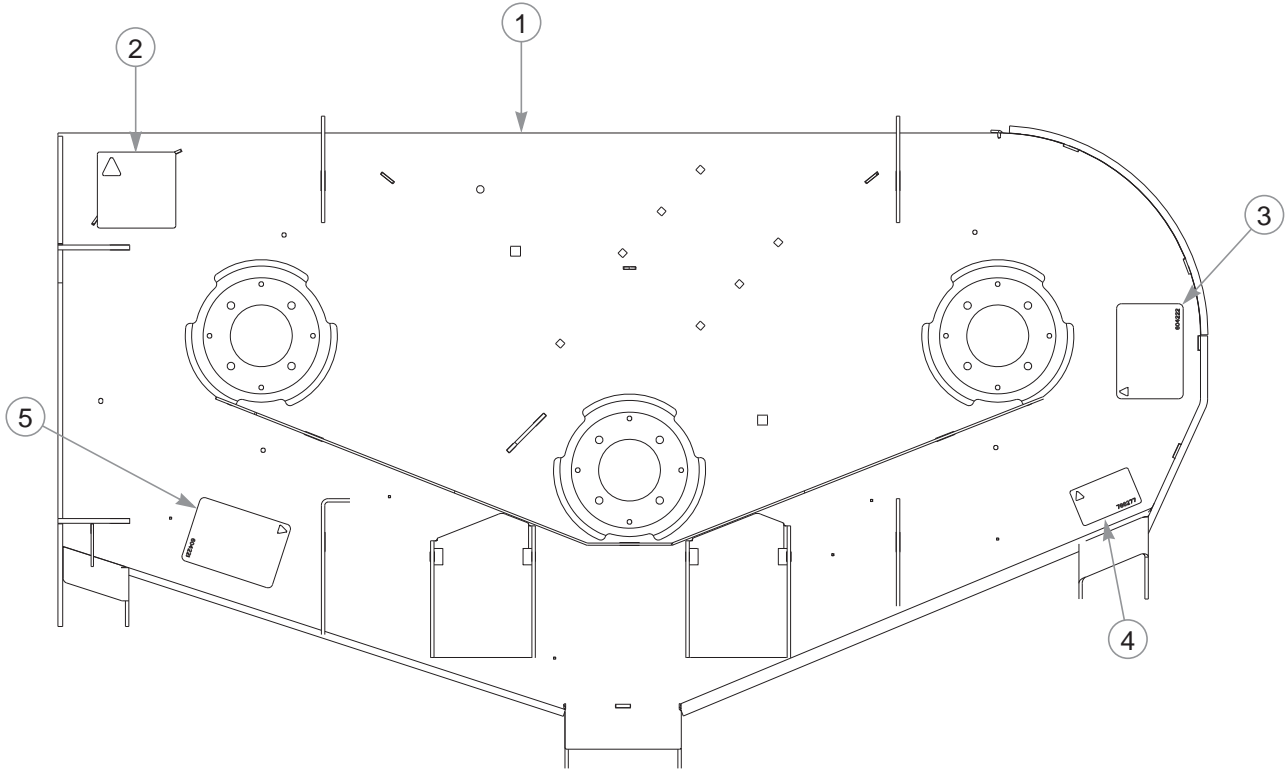
INDEX NO.	PART NO.	QTY.	DESCRIPTION
1	604722	1	RS PULLEY COVER
2	604723	1	LS PULLEY COVER
3	604324	4	CS .250-20 X .75 HX FLG
4	605469	1	DISCHARGE CHUTE
5	602435	1	TORSION SPRING
6	086660	1	NT .375-16 HX G5 NL
7	786483	1	BELT B 148.56" EL
8	602432	1	CHUTE PIN
9	113717	2	PULLER
10	781567	5	NT .500-13 HX G8 ZY NL
11	042630	2	CS .500-13 X 6.50 HX G5 Z
12	602338	1	CB .500-13 X 7.50 STD ZN
13	602344	1	SPACER 5.73
14	602341	1	PLASTIC WHEEL
15	767962	3	FW .531 X 1.063 X .175
16	604780	2	ANTI-SCALP WHEEL
17	602339	2	CB .500-13 X 4.50 STD ZN
18	016253	2	CB .312-18 X .75 FUL ZN
19	605376	1	DECK BUMPER
20	079210	2	FW .344 X 1.00 X .06 ZNYC
21	604251	2	NT .312-18 HX NL JAM G2 ZN
22	606251	3	BLADE, 18.5"-H-F-CW
	601124	3	BLADE, 18.5"-L-F-CW
	797712	3	BLADE, 18.5"-GAT-F-CW
	797704	3	BLADE, 18.5"-MUL-F-CW
23	782474	3	CW .631 X 2.25 X .187 PNT
24	781872	3	CS .625-11 X 1.25 HX G5 Z

---

### **NOTES:**

1. Torque to 118 ft-lbs.
2. Torque to 2–5 ft-lbs on these self-tapping screws.
3. Do not torque; the discharge chute must pivot freely.
4. Torque to 3–6 ft-lbs.

# 60" Service Deck



INDEX NO.	PART NO.	QTY.	DESCRIPTION
1	552877	1	60" DECK (WITH DECALS)
2	781419	1	BELT ROUTING DECAL
3	604222	1	DANGER/OBJECTS DECAL
4	786277	1	60" DECK ID DECAL
5	604221	1	DANGER/CHUTE DECAL

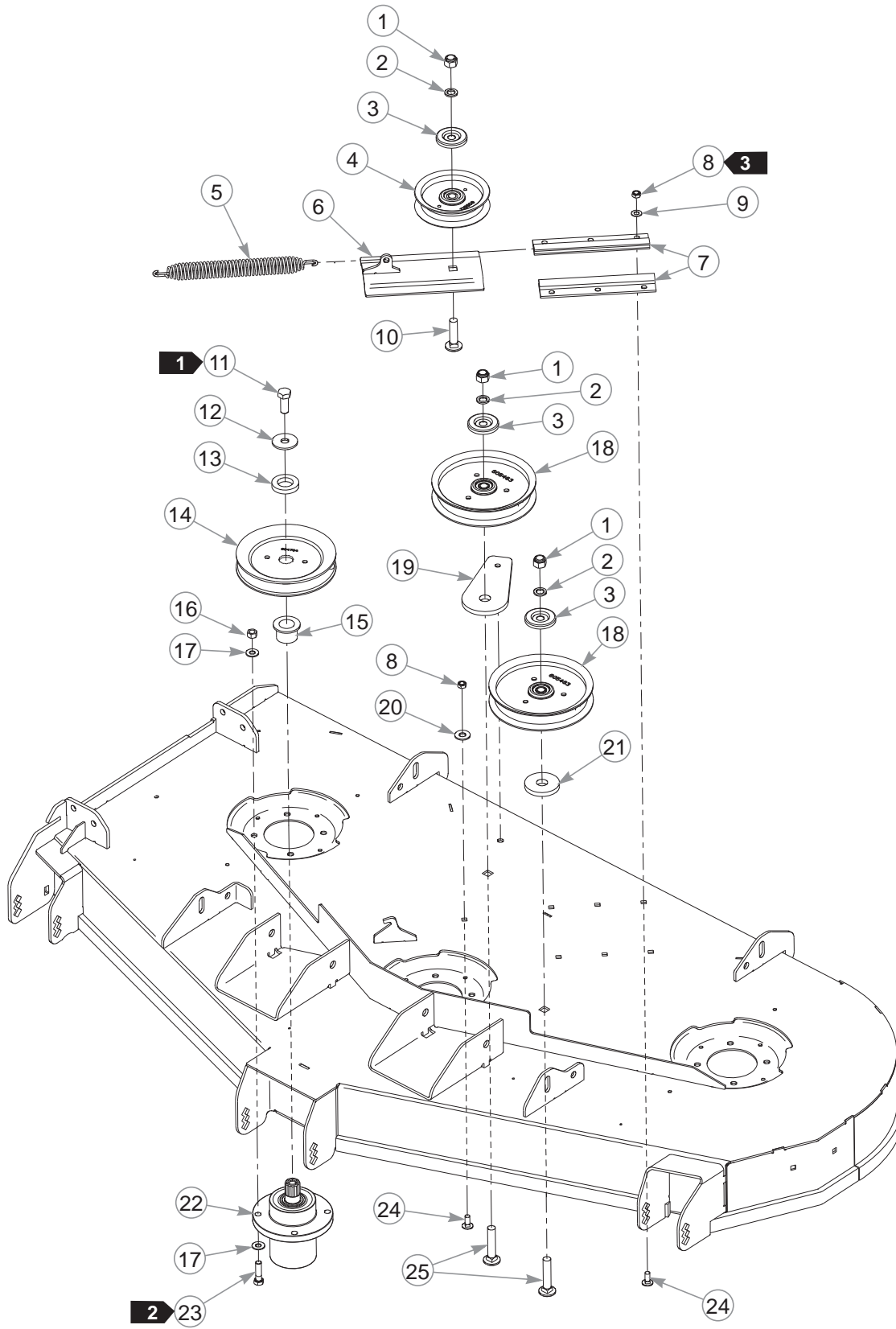
## NOTES:



---

**This page intentionally left blank.**

# 60" Deck Pulleys & Spindles



---

## **60" Deck Pulleys & Spindles**

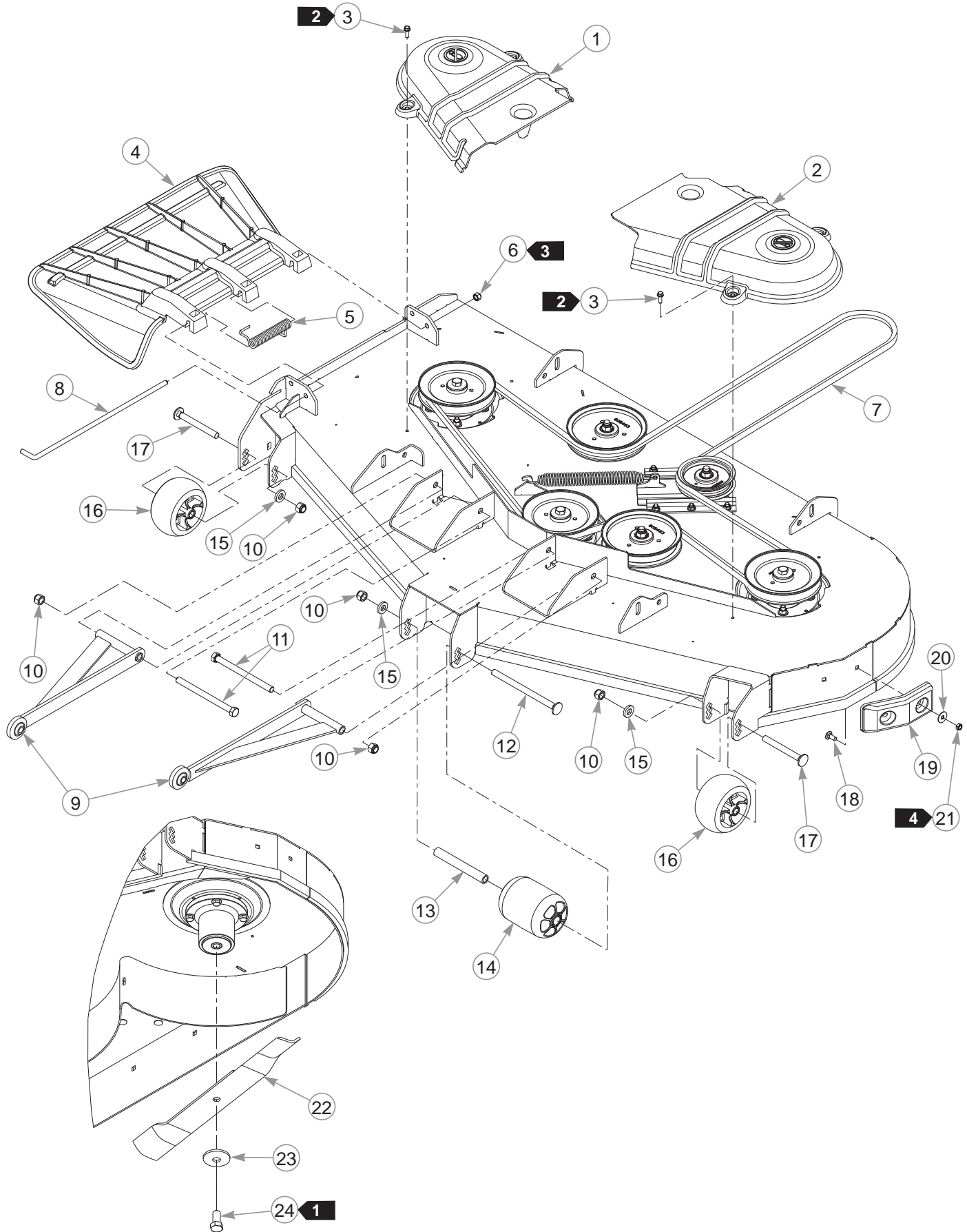
INDEX NO.	PART NO.	QTY.	DESCRIPTION
1	781567	3	NT .500-13 HX G8 ZY NL
2	604486	3	FW .531 X .812 X .089 HD
3	605467	3	DUST SHIELD
4	605512	1	4" IDLER PULLEY
5	122388	1	IDLER SPRING
6	121052	1	TENSIONER SLED
7	604790	2	IDLER SLIDE
8	604251	7	NT .312-18 HX NL JAM G2 ZN
9	604252	6	FW .340 X .675 X .035 ZN
10	604253	1	CB .50-13 X 2.00 STD ZN
11	705954	3	CS .500-13 X 1.25 HX G5
12	798603	3	FW .515 X 1.65 X .125 HD ZY
13	604777	3	SPINDLE SPACER
14	604704	3	PULLEY
15	605504	3	PULLEY SPACER
16	054502	12	NT .375-16 HX G5 ZNY
17	767954	24	FW .379 X .813 X .063
18	605463	2	6.00" IDLER PULLEY
19	605465	1	IDLER PULLEY MOUNT BASE
20	017129	1	FW .440 X 1.00 X .083 ZNY
21	605508	1	FW .73 X 2.25 X .312
22	605380	3	SPINDLE ASSEMBLY
23	005116	12	CS .375-16 X 1.375 HX G5
24	016253	7	CB .312-18 X .75 FUL ZN
25	604254	2	CB .50-13 X 2.50 STD ZN

---

### **NOTES:**

1. Torque to 73 ft-lbs.
2. Torque to 30 ft-lbs.
3. Torque to 3–6 ft-lbs.

# 60" Deck



---

## **60" Deck**

INDEX NO.	PART NO.	QTY.	DESCRIPTION
1	604722	1	RS PULLEY COVER
2	604723	1	LS PULLEY COVER
3	604324	4	CS .250-20 X .75 HX FLG
4	605469	1	DISCHARGE CHUTE
5	602435	1	TORSION SPRING
6	086660	1	NT .375-16 HX G5 NL
7	605510	1	BELT, B 158.5 EL
8	602432	1	CHUTE PIN
9	113717	2	PULLER
10	781567	5	NT .500-13 HX G8 ZY NL
11	042630	2	CS .500-13 X 6.50 HX G5 Z
12	602338	1	CB .500-13 X 7.50 STD ZN
13	602344	1	SPACER 5.73
14	602341	1	PLASTIC WHEEL
15	767962	3	FW .531 X 1.063 X .175
16	604780	2	ANTI-SCALP WHEEL
17	602339	2	CB .500-13 X 4.50 STD ZN
18	016253	2	CB .312-18 X .75 FUL ZN
19	605376	1	DECK BUMPER
20	079210	2	FW .344 X 1.00 X .06 ZNYC
21	604251	2	NT .312-18 HX NL JAM G2 ZN
22	606253	3	BLADE, 20.5"-H-F-CW
	600901	3	BLADE, F20.5"-L-F-CW
	794214	3	BLADE, 20.5"-MUL-F-CW
	794230	3	BLADE, 20.5"-GAT-F-CW
23	782474	3	CW .631 X 2.25 X .187 PNT
24	781872	3	CS .625-11 X 1.25 HX G5 Z

---

### **NOTES:**

1. Torque to 118 ft-lbs.
2. Torque to 2–5 ft-lbs on these self-tapping screws.
3. Do not torque; the discharge chute must pivot freely.
4. Torque to 3–6 ft-lbs.



---

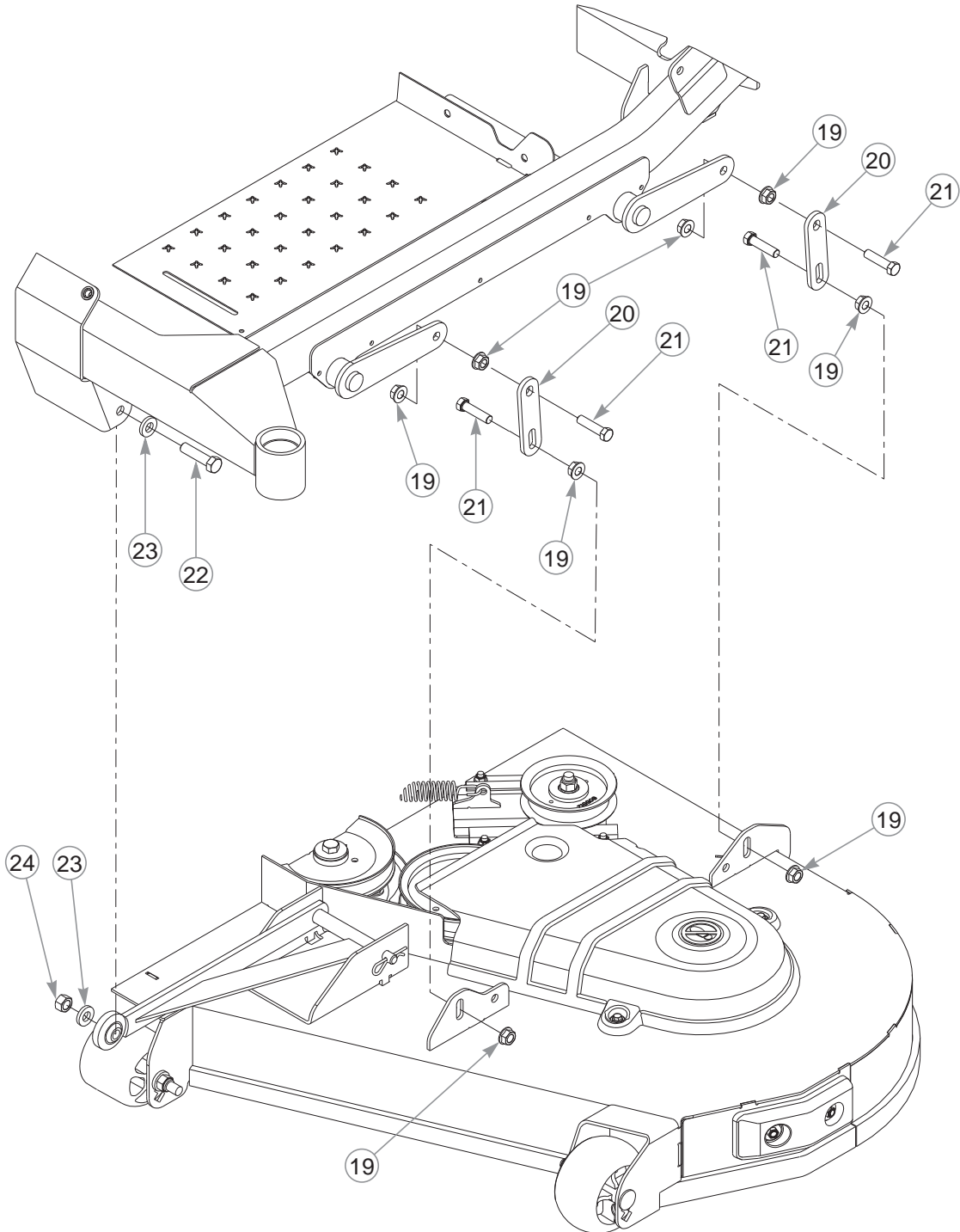
## **Deck Lift**

INDEX NO.	PART NO.	QTY.	DESCRIPTION
1	605466	1	TRANSPORT LATCH
2	768259	2	BUSHING
3	605470	1	CE .500 X 2.00 X 1.63
4	793059	2	E CLIP (1/2") .80 X .396
5	710194	2	CB .375-16 X 1.50 STD G5
6	605538	1	DECK HEIGHT DECAL
7	601963	1	DECK HEIGHT STOP PIN
8	008938	1	SPRING
9	086660	4	NT .375-16 HX G5 ZY NL
10	767954	6	FW .379 X .813 X .063
11	118900	2	DECK LIFT LINK SPACER
12	119969	1	INDICATOR BRACKET
13	190257	1	INNER CUT HEIGHT BRACKET
14	552901	1	INDICATOR (WITH DECAL)
15	190258	1	SPRING ASSIST BRACKET
16	601486	1	EB .375-16 X 3.00 FULL THD
17	054502	2	NT .375-16 HX G5 ZNY
18	603113	2	CB .375-16 X 1.25 G5 ZN
19	704643	16	NT .437-14 HX FLG ZN
20	119976	4	DECK LIFT LINK
21	055749	8	CS .437-14 X 1.75 HX G5

---

### **NOTES:**

# Deck Lift





---

## **Deck Lift**

<b>INDEX NO.</b>	<b>PART NO.</b>	<b>QTY.</b>	<b>DESCRIPTION</b>
22	078949	2	CS .500-13 X 2.00 HX G5 ZNY
23	767962	4	FW .531 X 1.063 X .175
24	008193	2	NT .500-13 HX G5 ZNYC

---

### **NOTES:**

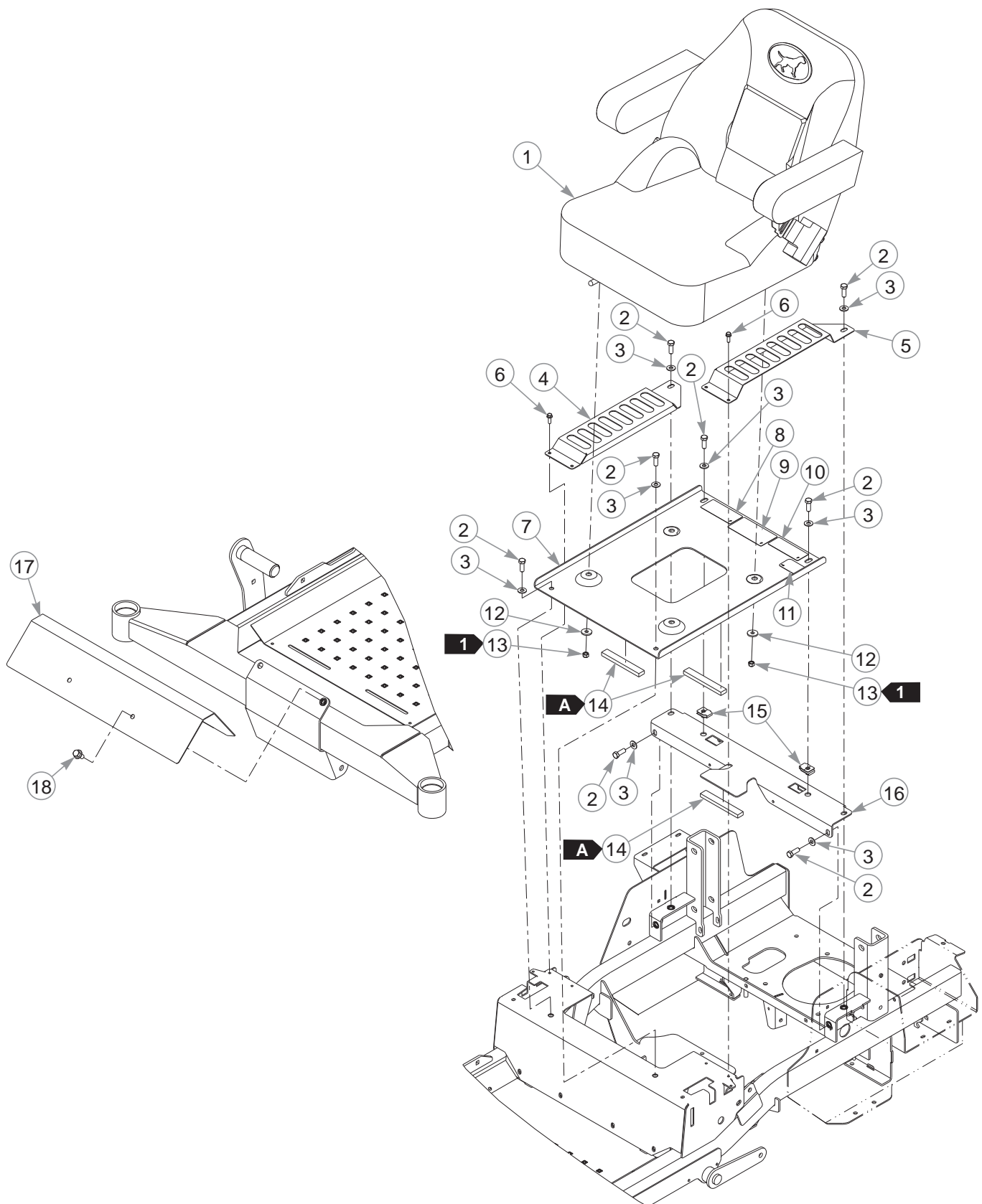
---

---

## Section 8

Seat—S/N 15120101 & Higher . . . . .	8-2
Seat—S/N Prior to 15120101 . . . . .	8-4
Footrest, Engine Guard & Hitch—S/N Prior to 15120101 . . . . .	8-6
Seat Service Parts—S/N 15010001 & Higher . . . . .	8-8
Seat Service Parts—S/N Prior to 15010001 . . . . .	8-9
ROPS. . . . .	8-10

# Seat—S/N 15120101 & Higher



---

## **Seat—S/N 15120101 & Higher**

INDEX NO.	PART NO.	QTY.	DESCRIPTION
1	605765	1	TWO-PIECE SEAT
2	036244	8	CS .375-16 X 1.00 HX G5
3	767954	8	FW .379 X .813 X .063
4	121069	1	RS HYDRO GUARD
5	121070	1	LS HYDRO GUARD
6	604324	4	CS .250-20 X .75 HX FLG
7	552898	1	SEAT PAN (WITH DECALS)
8	601967	1	ENGINE COMPARTMENT DECAL
9	600899	1	PUMP BELT WARNING DECAL
10	779280	1	HOT DECAL
11	605782	1	FUEL FILL LEVEL DECAL
12	712927	4	FW .344 X 1.00 X .12 HRD Z
13	058776	4	NT .312-18 HX ZY NL
14	713198	15"	SEAL 3/8 X 3/4
15	601758	2	CN .375-16 X .20 MAX THK
16	552848	1	SEAT SUPPORT(WITH SEAL)
17	190254	1	FOOTREST
18	029629	2	CS .375-16 X .75 HX FLK

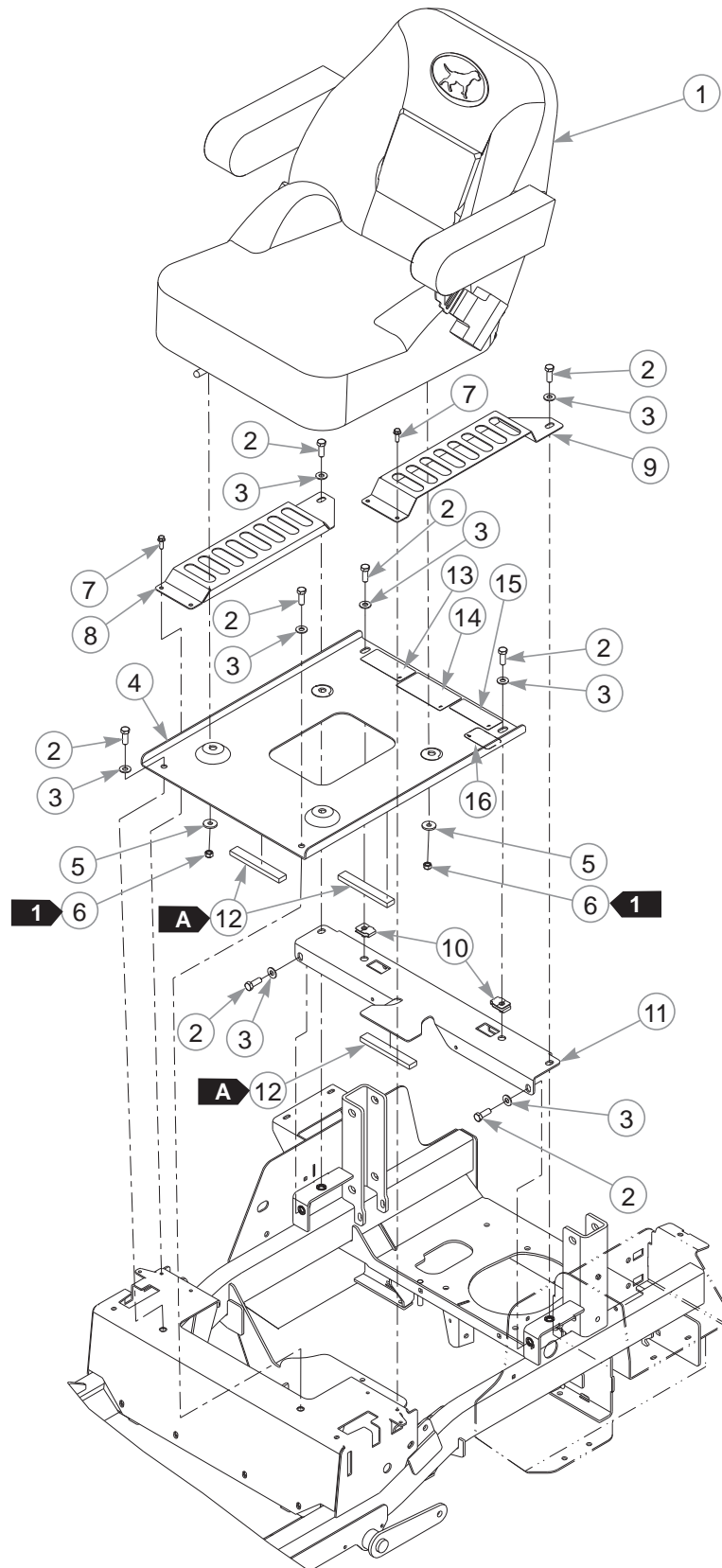
---

### NOTES:

SEAL LENGTH	
	5.0"

1. Torque to 17 ft-lbs.

**Seat—S/N Prior to 15120101**



---

## **Seat—S/N Prior to 15120101**

INDEX NO.	PART NO.	QTY.	DESCRIPTION
1	605765	1	TWO-PIECE SEAT
2	036244	8	CS .375-16 X 1.00 HX G5
3	767954	24	FW .379 X .813 X .063
4	552898	1	SEAT PAN (WITH DECALS)
5	712927	4	FW .344 X 1.00 X .12 HRD Z
6	058776	4	NT .312-18 HX ZY NL
7	604324	4	CS .250-20 X .75 HX FLG
8	121069	1	RS HYDRO GUARD
9	121070	1	LS HYDRO GUARD
10	601758	2	CN .375-16 X .20 MAX THK
11	552848	1	SEAT SUPPORT (WITH SEAL)
12	713198	15"	SEAL 3/8 X 3/4
13	601967	1	ENGINE COMPARTMENT DECAL
14	600899	1	PUMP BELT WARNING DECAL
15	779280	1	HOT DECAL
16	605782	1	LEVEL FUEL FILL DECAL

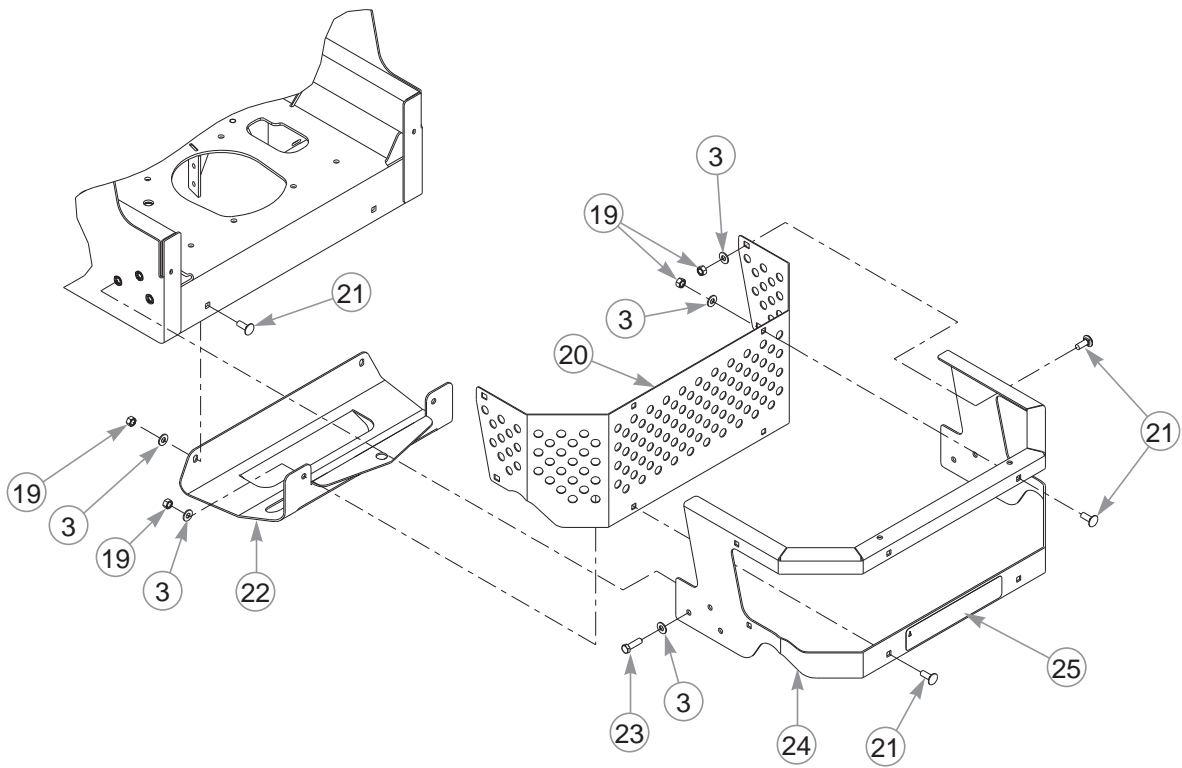
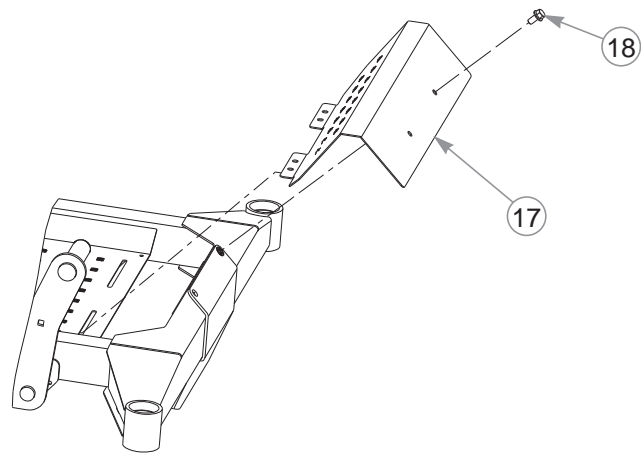
---

### NOTES:

SEAL LENGTH	
	5.0"

1. Torque to 17 ft-lbs.

**Footrest, Engine Guard & Hitch—S/N Prior to 15120101**





---

## **Footrest, Engine Guard & Hitch—S/N Prior to 15120101**

INDEX NO.	PART NO.	QTY.	DESCRIPTION
17	190254	1	FOOT REST
18	029629	2	CS .375-16 X .75 HX FLK
19	054502	10	NT .375-16 HX G5 ZNY
20	121405	1	BUMPER SCREEN
21	025395	10	CB .375-16 X 1.00 G5 ZNY
22	119977	1	HITCH PLATE
23	052860	6	CS .375-16 X 1.25 HX G5 ZN
24	552900	1	ENGINE GUARD (WITH DECALS)
25	605073	1	BUMPER DECAL

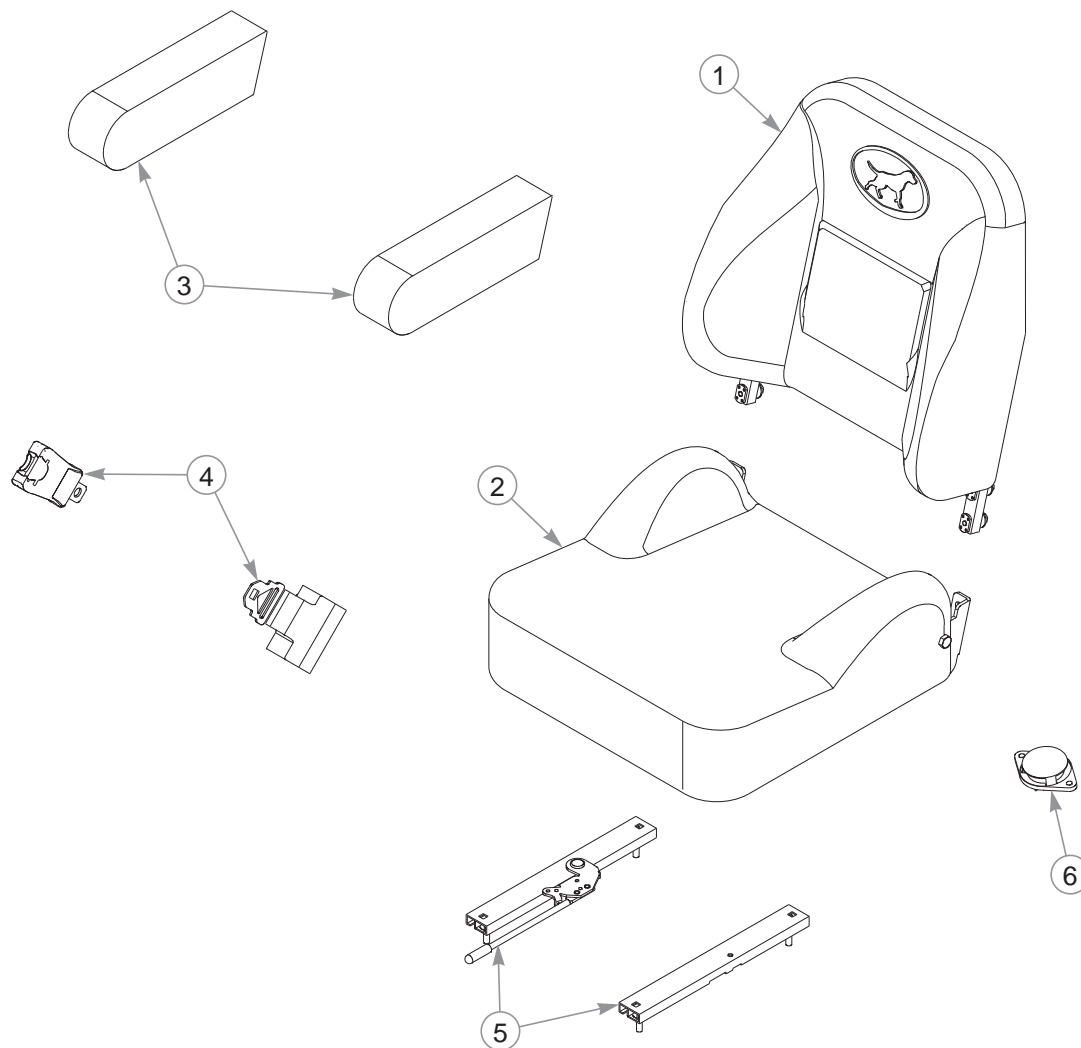
---

### **NOTES:**

1. See Section 2 for Engine Guard & Hitch—S/N 15120101 & Higher.

---

## **Seat Service Parts—S/N 15010001 & Higher**



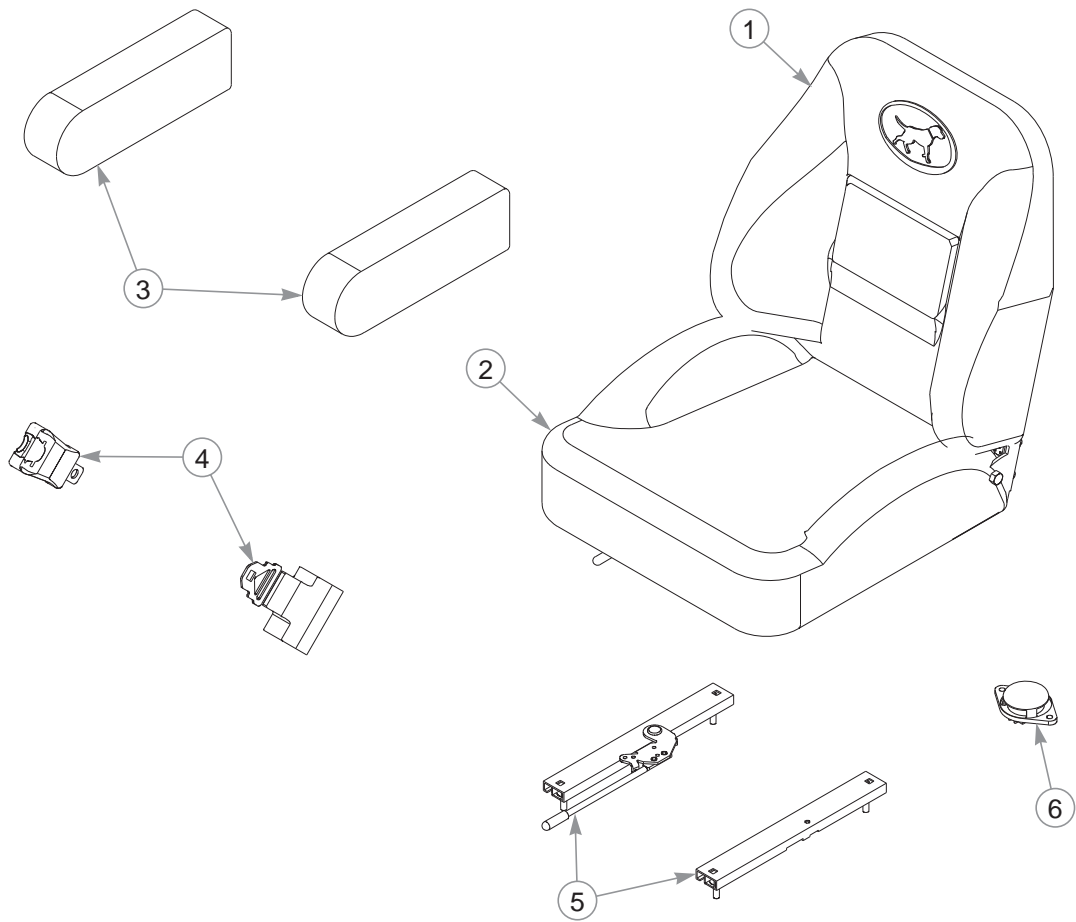
---

INDEX NO.	PART NO.	QTY.	DESCRIPTION
1	605781	1	SEAT BACK
2	605780	1	SEAT BOTTOM
3	605307	1	ARM REST (PAIR)
4	604945	1	SEAT BELT (SET)
5	604944	1	SEAT SLIDES (PAIR)
6	603148	1	SEAT SWITCH

---

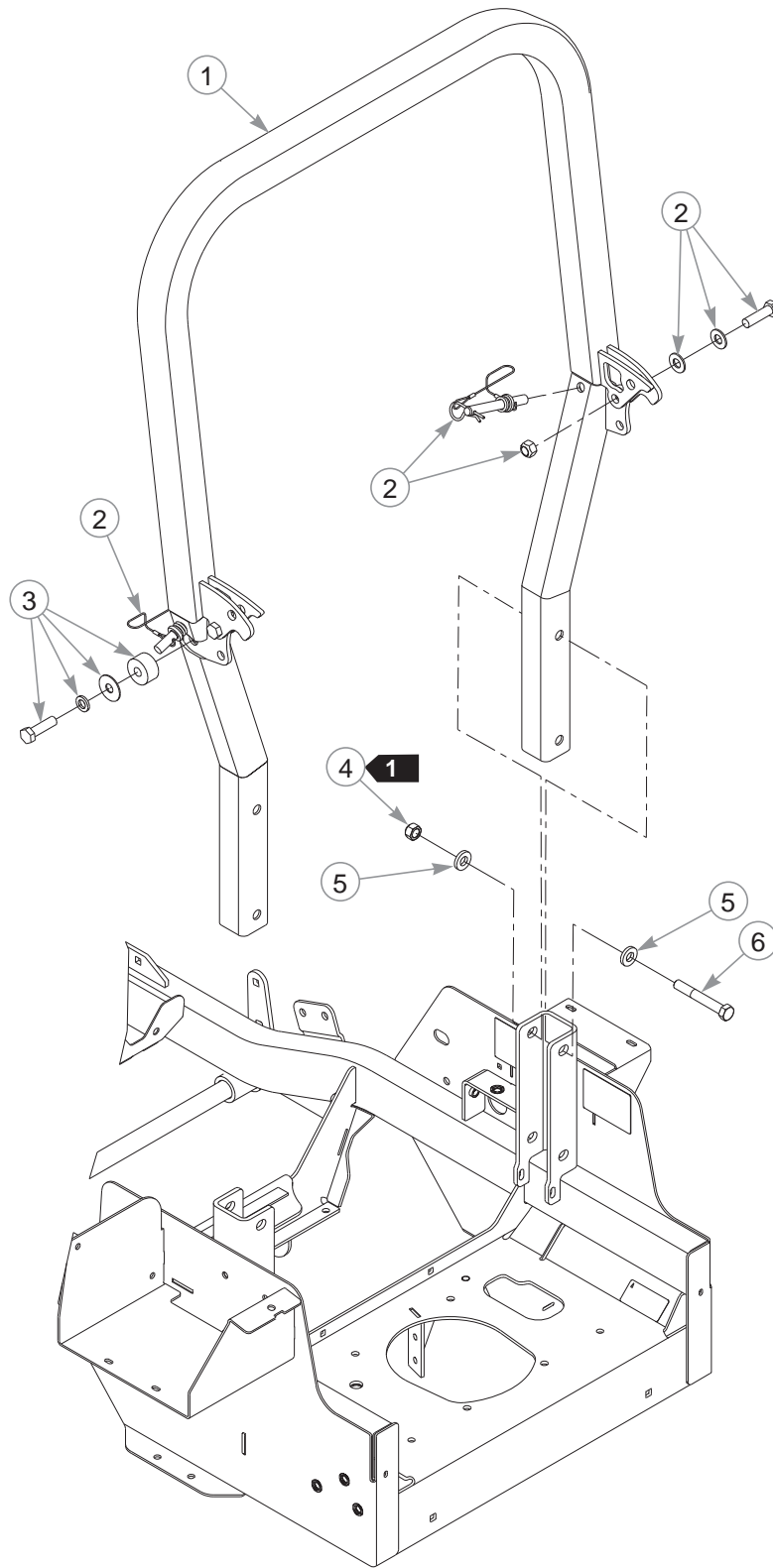
### **NOTES:**

# Seat Service Parts—S/N Prior to 15010001



INDEX NO.	PART NO.	QTY.	DESCRIPTION
1	605306	1	SEAT BACK
2	605305	1	SEAT BOTTOM
3	605307	1	ARM REST (PAIR)
4	604945	1	SEAT BELT (SET)
5	604944	1	SEAT SLIDES (PAIR)
6	603148	1	SEAT SWITCH

## NOTES:



---

# **ROPS**

INDEX NO.	PART NO.	QTY.	DESCRIPTION
1	605479	1	ROPS KIT
2	605044	1	ROPS HARDWARE KIT
3	605646	2	POLY STOP KIT
4	023317	4	NT .500-13 UNT LK G8
5	767962	8	FW .531 X 1.063 X .175
6	061812	4	CS .500-13 X 3.50 HX G5

---

## **NOTES:**

1. Torque to 73 ft-lbs.

---