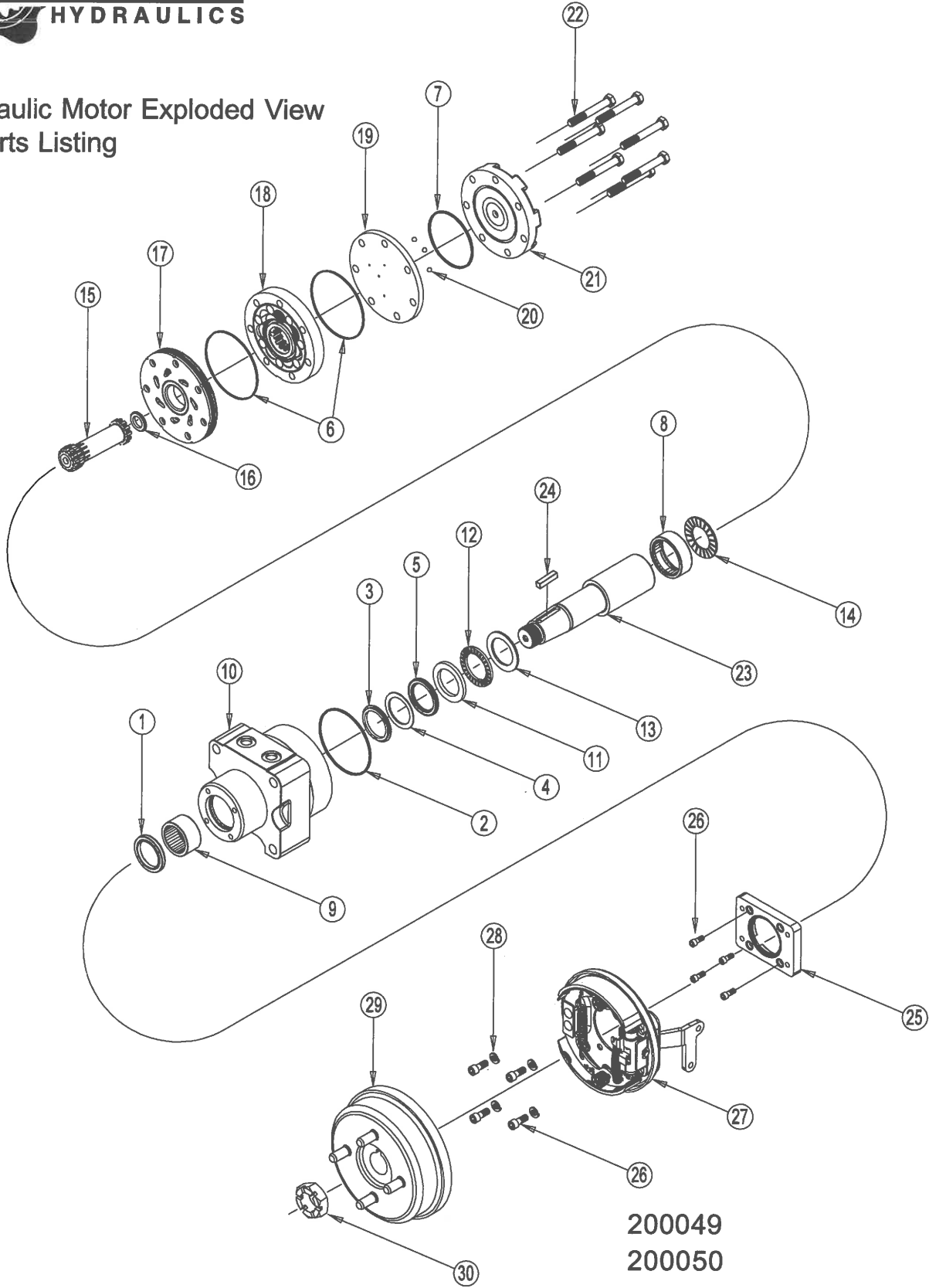




Hydraulic Motor Exploded View
& Parts Listing



200049
200050

200050 COMPONENTS

MISCELLANEOUS KITS

DESCRIPTION	EXP. VIEW ITEM #	KIT	DESCRIPTION	EXPLODED VIEW ITEM #	KIT
DUST SEAL	1		FRONT HOUSING BEARING	9	530018000
HOUSING SEAL	2		FRONT THRUST WASHER	11	500018283
BACK UP RING	3		FRONT THRUST BEARING	12	500018282
BACK UP	4		THRUST WASHER	13	300018002
SHAFT SEAL	5		REAR THRUST BEARING	14	500018059
BODY SEALS (2)	6	ITEMS # 1-8 INCLUDED IN SEAL KIT 500444004	FORWARD MANIFOLD (CCW OR "0")	17	500015006
ENDCOVER SEAL	7		BALANCE PLATE (3 BALLS INCLD)	19	500012001
REAR HOUSING BEARING	8		STEEL BALL	20	500018048
			ENDCOVER	21	500016001
			BRAKE MOUNTING BLOCK	25	530018002
			MOUNTING BOLTS (4)	26	400180050
			BRAKE KIT (RIGHT HAND LEVER)	27	400180046
			BRAKE SHOES ONLY	27	400180051
			LOCK WASHERS	28	400180045
			4 BOLT BRAKE HUB	29	300018106

400180048

ROTORS, DRIVE LINKS AND SPACERS, AND BOLTS

WHEN CHANGING MOTOR DISPLACEMENTS, A MATCHING ROTOR AND BOLT SET KIT MUST BE ORDERED. A NEW DRIVE LINK KIT MAY BE NECESSARY. DRIVE LINK SPACERS ARE INCLUDED IN DRIVE LINK KITS, BUT MAY ALSO BE ORDERED SEPARATELY BY USING THE DRIVE LINK SPACER KIT NUMBER.

EXPLODED VIEW ITEM #	DESCRIPTION	ITEM #	KIT
18	STANDARD ROTOR KIT	15	
14	DISPLACEMENT 1 1/4 CUBIC INCH	500014009	DRIVE LINK KIT
		500018185	DRIVE LINK SPACER KIT
		22	BOLT SET KIT
			500445014

HOUSING KITS

(EXPLODED VIEW ITEM #10)

DESCRIPTION	KIT
SETBACK FLANGE W/ BRAKE MOUNT	HOUSING KIT
	530013905

SHAFTS AND RELATED COMPONENTS KITS

SHAFT KITS COME WITH RELATED SHAFT COMPONENTS (i.e. keys, nuts, etc.)

TO ORDER INDIVIDUAL SHAFT COMPONENTS (i.e. keys, nuts, bolts, washers or wire rings) USE THE KIT NUMBER FOR EACH INDIVIDUAL PART.

EXPLODED VIEW ITEM #	DESCRIPTION	ITEM #	KIT
23	SHAFT KIT	24	
		500011311	KEY KIT
		500449105	NUT KIT
			PW72693

White Hydraulics, Inc. Phone (270) 885-1110 Fax (270) 886-8462