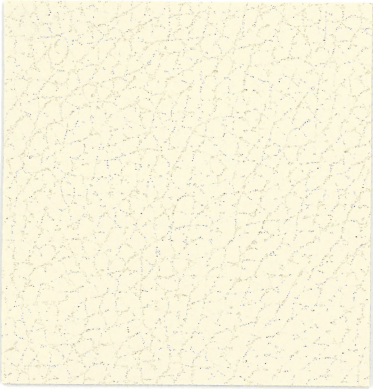


GRADE  
5

Brisa® | Original & Distressed



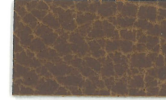
533-3019 Birch <sup>os</sup>



533-5747 White <sup>os</sup>



533-3946 New Sand



535-3976 Bridle\*



533-8245 Cinnabar



533-2620 Evening Blue



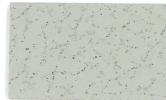
533-4303 Seaweed



533-3022 Shiitake



533-3913 Truffle <sup>os</sup>



533-5820 Quicksilver



535-3271 Koala\*



533-5802 Ash <sup>os</sup>



533-5749 Black Onyx <sup>os</sup>

GRADE  
5

Brisa® | Fresco



544-5752 Flint



544-5711 Coconut



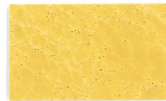
544-3100 Whey



544-3101 Oatstraw



544-3197 Patina



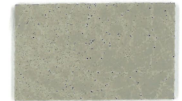
544-5265 Goldenrod



544-8210 Tangerine



544-1349 Elderberry



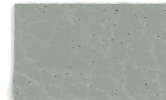
544-3102 Grotto



544-7313 Sea Glass



544-2566 Azurite



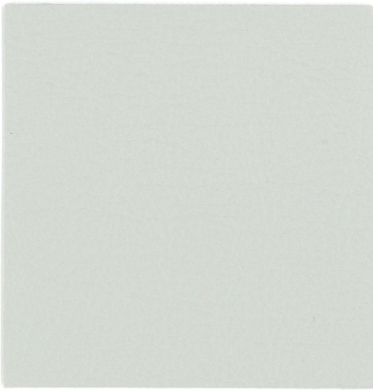
544-5743 Peninsula



544-5754 Peppercorn

GRADE  
6

Ultraleather® | Pro



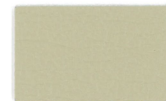
554-5648 Cloud



554-0008 White



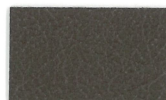
554-3803 Parfait



554-3352 Shore



554-3595 Cork



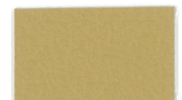
554-3376 Dark Chocolate



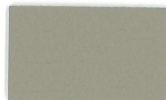
554-1329 Rhubarb



554-1357 Cranberry



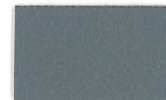
554-3444 Toasted Bagel



554-3087 Woodcres



554-2711 Blueberry



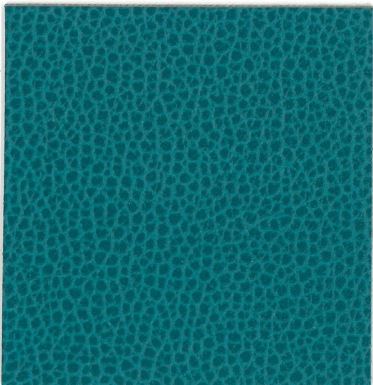
554-5626 Char



554-5618 Dark Knight

GRADE  
5

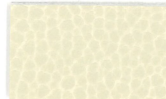
Ultraleather® | Promessa



363-7309 Malibu



363-3464 Tusk



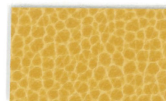
363-3152 Parchment



363-3463 Cocoa



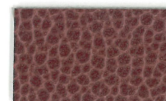
363-3141 Fields



363-5258 Sun Shower



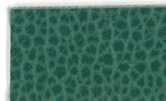
363-1396 Blood Orange



363-9414 Merlot



363-3224 Brown Earth



363-7273 Aspen Green



363-2604 Stone Blue



363-5818 Ash



363-5011 Battleship

\*Denotes Distressed

## SPECIFICATIONS

	<b>Brisa®   Original</b> <b>Brisa®   Distressed</b> Breathable technology	<b>Brisa®   Fresco</b> Antimicrobial protection Breathable technology	<b>Ultraleather®   Pro</b> Antimicrobial protection Ink and denim resistant	<b>Ultraleather®   Promessa®</b> Antimicrobial protection
<b>COMPOSITION:</b> (SURFACE) (BACKING)	100% POLYCARBONATE POLYURETHANE 65% POLYESTER, 35% RAYON BACKING	100% POLYCARBONATE POLYURETHANE 65% POLYESTER, 35% RAYON BACKING	100% POLYCARBONATE POLYURETHANE 100% POLYESTER, 100% RAYON BACKING	100% POLYCARBONATE POLYURETHANE 100% POLYESTER, 100% RAYON BACKING
<b>WEIGHT:</b>	APPROX. 9.3 OZ. PER SQUARE YARD APPROX. 315 GRAMS PER SQUARE METRE	APPROX. 9.3 OZ. PER SQUARE YARD APPROX. 315 GRAMS PER SQUARE METRE	APPROX. 9.7 OZ. PER SQUARE YARD APPROX. 330 GRAMS PER SQUARE METRE	APPROX. 12 OZ. PER SQUARE YARD APPROX. 410 GRAMS PER SQUARE METRE
<b>THICKNESS:</b>	APPROX. 1.0 MM	APPROX. 1.0 MM	APPROX. 0.95 MM	APPROX. 1.1 MM
<b>WIDTH:</b>	54 INCHES / 137 CM	54 INCHES / 137 CM	54 INCHES / 137 CM	54 INCHES / 137 CM
<b>CHARACTERISTICS</b>				
<b>ABRASION:</b> (MEETS OR EXCEEDS)	ASTM D4157 / 300,000 DOUBLE RUBS* BS 2543 / 160,000 RUBS** *WYZENBEEK **MARTINDALE	ASTM D4157 / 300,000 DOUBLE RUBS* BS 2543 / 160,000 RUBS** *WYZENBEEK **MARTINDALE	ASTM D4157 / 500,000 DOUBLE RUBS* BS 2543 / 200,000 RUBS** *WYZENBEEK **MARTINDALE	ASTM D4157 / 400,000 DOUBLE RUBS* BS 2543 / 180,000 RUBS** *WYZENBEEK **MARTINDALE
<b>AIR PERMEABILITY:</b>	ASTM D737	ASTM D737	NA	NA
<b>ANTIMICROBIAL:</b>	NA	ASTM E2180	ASTM E2180	ASTM E2180
<b>SOUND ABSORPTION:</b>	ASTM C423	ASTM C423	NA	NA
<b>HYDROLYSIS:</b>	14+ WEEKS ASTM D3690-02 SECT. 6.11 (HYDROLYTIC STABILITY) ISO 1419 METHOD C (ACCELERATED AGEING)	14+ WEEKS ASTM D3690-02 SECT. 6.11 (HYDROLYTIC STABILITY) ISO 1419 METHOD C (ACCELERATED AGEING)	14+ WEEKS ASTM D3690-02 SECT. 6.11 (HYDROLYTIC STABILITY) ISO 1419 METHOD C (ACCELERATED AGEING)	14+ WEEKS ASTM D3690-02 SECT. 6.11 (HYDROLYTIC STABILITY) ISO 1419 METHOD C (ACCELERATED AGEING)
<b>ADHESION OF COATING:</b>	ASTM D751	ASTM D751	ASTM D751	ASTM D751
<b>TEAR STRENGTH:</b>	ASTM D2261	ASTM D2261	ASTM D2261	ASTM D2261
<b>BREAKING STRENGTH:</b>	ASTM D5034	ASTM D5034	ASTM D5034	ASTM D5034
<b>COLORFASTNESS</b>				
<b>CROCKING:</b>	AATCC 8, CLASS 5 WET & DRY	AATCC 8, CLASS 5 WET & DRY	AATCC 8, CLASS 5 WET & DRY	AATCC 8, CLASS 5 WET & DRY
<b>LIGHT:</b>	AATCC 16.3, 200 HOURS, GRADE 4-5 ISO 105 - B02 : 1999 GRADE 7/8	AATCC 16.3, 200 HOURS, GRADE 4-5 ISO 105 - B02 : 1999 GRADE 7/8	AATCC 16.3, 200 HOURS, GRADE 4-5 ISO 105 - B02 : 1999 GRADE 7/8	AATCC 16.3, 200 HOURS, GRADE 4-5 ISO 105 - B02 : 1999 GRADE 7/8
<b>F/R RATING (HFR FREE)</b>				
<b>F/R RATING:</b>	ASTM E84 (ADHERED) CLASS A CA TB 117-2013 PASS FMVSS 302 & 95/28 ANNEX IV PASS NFPA 260 CLASS 1 UFAC CLASS 1	ASTM E84 (ADHERED) CLASS A CA TB 117-2013 PASS FMVSS 302 & 95/28 ANNEX IV PASS NFPA 260 CLASS 1 UFAC CLASS 1	ASTM E84 (ADHERED) CLASS A CA TB 117-2013 PASS FMVSS 302 & 95/28 ANNEX IV PASS NFPA 260 CLASS 1 UFAC CLASS 1	ASTM E84 (ADHERED) CLASS A CA TB 117-2013 PASS FMVSS 302 & 95/28 ANNEX IV PASS NFPA 260 CLASS 1 UFAC CLASS 1

\* CAN BE TREATED TO MEET FAR SPECIFICATIONS.

\* THESE FABRICS, WHEN TREATED AND/OR USED WITH OTHER COMPATIBLE FURNITURE COMPONENTS, HAVE BEEN SHOWN TO PERFORM WELL UNDER THE FIRE TEST CONDITIONS OF CALIFORNIA TECHNICAL BULLETIN 133, ASTM E 84 (UNADHERED), BS 5852 SOURCE 5 ("CRIB 5"), BS 7175, BS 5867 PART 2 TYPE B, IMO A.652(16) AND NFPA 701.

## Cleaning & Care Instructions

- Clean with soap and water, or alcohol-based cleaners like Fantastik® and Formula 409®
- Disinfect using a 1:5 bleach/water solution
- Ultraleather® | Pro - for ink and tough stains, clean using isopropyl/rubbing alcohol
- Rinse all cleaning solutions with clean water

## Earth Friendly

- **GREENGUARD Certified**
  - Meets stringent VOC emission standards
  - Promotes healthier indoor air quality
  - Contributes towards satisfying credits under LEED® and level®, BIFMA
- Compliant with Prop 65
- Less than 100 ppm of antimicrobial treatment<sup>+</sup>
  - No Triclocarban or Triclosan
- No Conflict Minerals
- No Flame Retardants (ex. Halogenated, Brominated)
- No PBDEs (Polybrominated Diphenyl Ethers)
- No Plasticizers, Heavy Metals, Stabilizers, Phthalates or Bisphenol A (BPA)
- No POPs (Persistent Organic Pollutants)
- No PVC (Polyvinyl Chloride)
- No toxic by-products
- Over 99% of solvents recaptured and recycled

<sup>+</sup>Denotes Fresco, Pro, and Promessa®

## via seating

205 Vista Blvd  
Sparks, NV 89434  
T 800.433.6614

[www.viaseating.com](http://www.viaseating.com)

**via**  
SEATING

8/16

[ultrafabricsinc.com](http://ultrafabricsinc.com)

Ultrafabrics® and logo, Ultraleather®, Brisa®, Ultratech®, and Promessa® are trademarks of Ultrafabrics Inc. Made in Japan.

**Uf**  
Ultrafabrics®