

Grade 1 Fabrics

Basic:



1001
Charcoal



1002
Gray



1004
Navy



1005
Blue



1013
Burgundy



1020
Black

Content: 100% Marquesa Lana
Backing: Acrylic
Finish: Teflon
Repeat: None
Directional: No
Railroaded: No

Cleaning Code: WS
Abrasion: 250,000 Double Rubs
Breaking Strength: Warp 300 lbs. / Fill 300 lbs.
Crocking: Dry Class 5 / Wet Class 5
Lightfastness: 400 Hrs. - Class 5
Flammability: Passes California TB 117-2013; CS-191-53

Spice:



1161
Pepper



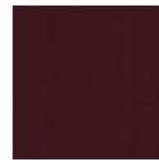
1163
Nutmeg



1164
Juniper



1166
Sesame



1167
Paprika



1168
Mint

Content: 100% Recycled Polyester
Backing: Acrylic
Finish: Teflon
Repeat: None
Directional: No
Railroaded: No

Cleaning Code: WS
Abrasion: 400,000 Double Rubs
Breaking Strength: Warp 300 lbs. / Fill 220 lbs.
Crocking: Dry Class 5 / Wet Class 5
Lightfastness: 60 Hrs. - Class
Flammability: Passes California TB 117-2013; CS-191-53
BIFMA X5.7-1991; NFPA 260, CLASS 1; UFAC, CLASS 1

Celestial:



1200
Oberon



1201
Rhea



1203
Callisto



1204
Titan



1207
Hyperion



1208
Europa

Content: 100% Polyester
Backing: Acrylic
Finish: Stain Repellent
Repeat: None
Directional: No
Railroaded: No

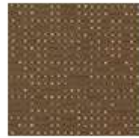
Cleaning Code: S
Abrasion: 183,000 Double Rubs
Breaking Strength: Warp 395.2 lbs. / Fill 298 lbs.
Crocking: Dry Class 4 / Wet Class 4
Lightfastness: 40 Hrs. - Class 4
Flammability: Passes California TB 117-2013; NFPA 260,
CLASS 1; ASTM E84 (Adhered), CLASS 2 or B

Grade 2 Fabrics

Arcade:



2100
Galaga



2101
Dig Dug



2103
Commando



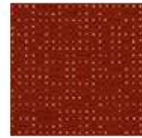
2104
Tron



2105
Pacman



2106
Ikari



2107
Qbert

Content: 31% Polyester, 69% PCR Polyester
Backing: Acrylic
Finish: Soil and Stain Repellent
Repeat Length: 3.6250
Repeat Width: 3.000
Directional: Yes

Cleaning Code: WS
Abrasion: 80,000 Double Rubs
Breaking Strength: Warp 275 lbs. / Fill 459 lbs.
Crocking: Dry Class 4.5 / Wet Class 4.5
Lightfastness: 40 Hrs. - Class 4
Flammability: Passes California TB 117-2013; NFPA 260, CLASS 1; UFAC, CLASS 1

Clue:



2400
Spade



2401
Sherlock



2402
Marlowe



2403
Tracy



2404
Hardy



2406
Drew



2407
Clouseau



2408
Friday



2409
Agatha

Content: 79% Polyester 21% Rayon
Backing: 100% Polyester non-woven scrim
Finish: Soil and Stain Repellent
Breaking Strength: Warp 152 lbs. / Fill 116 lbs.
Crocking: Dry Class 4 / Wet Class 4

Cleaning Code: W
Abrasion: 70,000 cycles
Lightfastness: 4 Hrs. - Class 4
Flammability: Passes California TB 117-2013; NFPA 260, CLASS 1; UFAC, CLASS 1

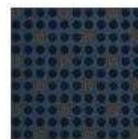
Knack:



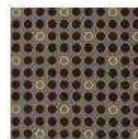
2542
Filament



2543
Reed



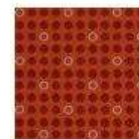
2544
Brisk



2545
Fresco



2546
Teak



2547
Zest



2548
Zing

Content: 100% Post Consumer Recycled Polyester
Backing: Acrylic
Finish: Soil & Stain Resistant
Repeat Width: 1.75"
Repeat Length: 1.625"

Cleaning Code: WS
Abrasion: 100,000 Double Rubs
Lightfastness: 40 Hrs. - Class 5
Breaking Strength: Warp 50 lbs. / Fill 50 lbs
Flammability: Passes California TB 117-2013; NFPA 260, CLASS 1; UFAC, CLASS 1

Grade 2 Fabrics (cont'd)

Softsit Fabric:



2570
Graphene

2571
Basalt

2572
Ash

2574
Kelvin

2575
Tsunami

2576
Magma

2577
Molten

2578
Kipuka



2579
Phlox

Content: 100% Polyester
Backing: 100% Polyester non-woven scrim
Finish: None
Breaking Strength: Warp 199 lbs. / Fill 199 lbs.
Crocking: Dry Class 4 / Wet Class 3

Cleaning Code: WS
Abrasion: 110,000 Double Rubs
Lightfastness: 20 Hrs. - Class 4
Flammability: Passes California TB 117-2013
Repeat: No

Grade 3 Fabrics

Free:



3400
Orbit

3401
Stealth

3402
Flight

3403
Cocoa

3404
Evening

3406
Pearl

3408
Oasis

Content: 100% PCR Polyester
Backing: Acrylic
Finish: Soil and Stain Repellent
Repeat Length: 5.3750
Repeat Width: 5.000
Directional: Yes

Cleaning Code: WS
Abrasion: 100,000 Double Rubs
Breaking Strength: Warp 244 lbs. / Fill 391 lbs.
Crocking: Dry Class 4.5 / Wet Class 5
Lightfastness: 40 Hrs. - Class 4
Flammability: Passes California TB 117-2013; NFPA 260,
CLASS 1; UFAC, CLASS 1

(continued on next page)

Line Up:



3500
Shadow

3501
Pewter

3503
Sandstone

3504
Baltic

3505
Tranquil

3507
Spice

3508
Fern

Content: 100% PCR Polyester
Backing: Acrylic
Finish: Soil and Stain Repellent
Repeat Length: 1.75
Repeat Width: 3.75
Directional: Yes

Cleaning Code: WS
Abrasion: 100,000 Double Rubs
Breaking Strength: Warp 286 lbs. / Fill 309 lbs.
Crocking: Dry Class 4.5 / Wet Class 4.5
Lightfastness: 40 Hrs. - Class 5
Flammability: Passes California TB 117-2013; NFPA 260, CLASS 1; UFAC, CLASS 1

Dart:



3600
Abyss

3601
Fog

3603
Peat

3604
Sapphire

3606
Bamboo

3607
Ruby

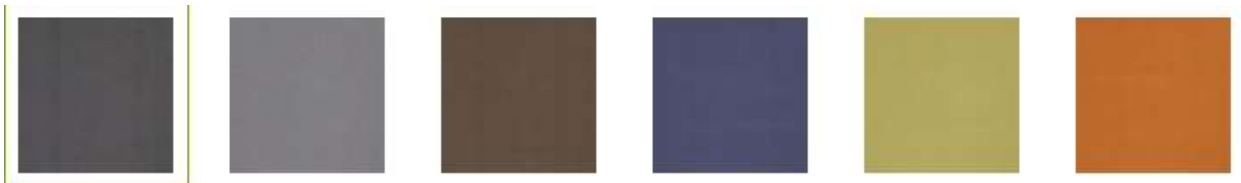
3608
Evergreen

Content: 58% Polyester 27% PIR Polyester
15% Consumer Recycled Polyester
Finish: Non-PFOA Soil and Stain Resistant
Repeat: None
Cleaning Code: WS
Directional: No

Abrasion: 70,000 Double Rubs
Breaking Strength: Warp 138 lbs. / Fill 239.5 lbs.
Crocking: Dry Class 5 / Wet Class 4.5
Lightfastness: 40 Hrs. - Class 5
Flammability: Passes CA TB 117-2013; NFPA 260, CLASS 1; UFAC, CLASS 1; ASTM E84 (Adhered), CLASS 2 or B

Grade 3 Fabrics – Healthcare

Stage:



3V50
Cats

3V52
Chicago

3V53
Grease

3V55
Aida

3V58
Shrek

3V59
Fame

Content: 70% Vinyl, 30% Polyester
Backing: 70% Vinyl Face, 30% Poly Backing
Finish: SILVERGUARD and PERMABLOK
Repeat: None
Railroaded: No
Directional: Yes
Cleaning Code: WS, BC
Breaking Strength: Warp 121 lbs. / Fill 72 lbs.
Abrasion: 930,000 Double Rubs

Crocking: Dry Class 4 / Wet Class 4
Lightfastness: 1000 Hrs.
Flammability: Passes California TB 117-2013; NFPA 260, CLASS 1; Cal 117 Section E; Boston Fire Dept. Code (BFD IX-1); FAA/FAR 25.853(a) & Appendix F Part I(a)(ii); FMVSS 302; IMO A.652 (16) 8.2 & 8.3; NFPA 701 (small scale); NY/NJ Port Authority; Fed. St.191A M 5903; ASTM E662.1; May comply with Cal. Tech. Bul. 133 when combined with appropriate components.

Grade 3 Fabrics – Healthcare (cont'd)

Illusion:



3V80
Houdini



3V81
Teller



3V84
Penn



3V86
Copperfield



3V87
Burton

Content: 100% Vinyl
Backing: 100% Polyester Mellohide
Finish: Antimicrobial

Repeat: None
Railroaded: No

Crocking: Dry Class 4 / Wet Class 4
Lightfastness: 1000 Hrs.
Flammability: Passes California TB 117-2013; UFAC, CLASS 1;
NFPA 260A; BIFMA CLASS A
Cleaning Code: WS, BC
Abrasion: 100,000 Double Rubs

Cinema:



3P30
Noir



3P31
Academy



3P32
Ensemble



3P33
Icon



3P34
Blockbuster



3P36
Cue



3P38
Cameo

Content: 100% Polyurethane
Backing: 70% Polyester 30% Cotton
Finish: Anti-microbial
Repeat: None
Directional: No
Railroaded: No

Cleaning Code: WS
Abrasion: 200,000 Double Rubs
Lightfastness: 100 Hrs. - Class 4
Flammability: Passes California TB 117-2013; UFAC, CLASS 1
NFPA 260 CLASS 1; MVSS 302; IMO A. 652 (16) 8.2

(continued on next page)

Grade 4 Fabrics – Healthcare

Cover Cloth:



4C00
Jet

4C01
Gunmetal

4C02
Platinum

4C03
Syracuse

4C04
Indigo

4C05
Vesper

4C06
Oat

4C07
Russet



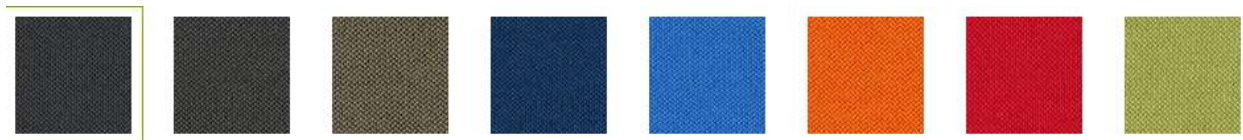
4C08
Sorrel

Content: 44% Polyester, 56% Repreve PCR Poly
Backing: None
Finish: Crypton®
Repeat: None
Railroaded: No
Cleaning Code: W, BC

Abrasion: 200,000 Double Rubs
Breaking Strength: Warp 244 lbs. / Fill 203 lbs.
Crocking: Dry Class 4.5 / Wet Class 4.5
Lightfastness: 40 Hrs. - Class 4
Flammability: Passes California TB 117-2013; NFPA 260,
CLASS 1; UFAC, CLASS 1

Grade 4 Fabrics

Rocket:



4500
Ink

4501
Graphite

4503
Taupe

4504
Navy

4505
Bright Blue

4506
Red-Orange

4507
Flame

4508
Sage

Content: 27% Polyester, 73% Recycled Poly
Backing: None
Finish: NANO-TEX Resists Spills
Repeat: None
Cleaning Code: WS

Abrasion: 100,000+ Double Rubs
Breaking Strength: Warp 50 lbs. / Fill 50 lbs.
Crocking: Dry Class 4 / Wet Class 3
Lightfastness: 40 Hrs. - Class 4
Flammability: Passes California 117-E; UFAC Class 1; NFPA
260 Class 1

(continued on next page)

Grade 5 Fabrics:

Myth:



5200
Hades



5201
Persephone



5202
Perseus



5203
Hermes



5204
Poseidon



5205
Zeus



5206
Hercules



5207
Ares



5208
Medusa

Content: 100% Polyester
Backing: None
Finish: None
Repeat: None
Cleaning Code: WS

Abrasion: 250,000 Double Rubs
Breaking Strength: Warp 200 lbs. / Fill 150 lbs.
Crocking: Dry Class 4 / Wet Class 3
Lightfastness: 40 Hrs. - Class 4
Flammability: Passes California 117-E; UFAC Class 1; NFPA 260 Class 1

Comfortknit Solids:



5501
Flint



5502
Monarch



5503
Smoke



5506
Cappuccino



5512
Xanadu



5515
Baltic



5539
Wine

Content: 100% Repreve PC Polyester
Backing: None
Finish: None
Cleaning Code: W
Waterfastness: Class 5 for staining / Class 5 for shade color

Abrasion: Exceeds 250,000 Double Rubs
Breaking Strength: Warp 209.4 lbs. / Fill 251.6 lbs.
Crocking: Dry Class 1 / Wet Class 1
Lightfastness: 40 Hrs. - Class 1
Flammability: Passes California 117-E; UFAC Class 1; NFPA 260 Class 1

(continued on next page)

Grade 5 Fabrics (cont'd):

Architect:



5700
Gehry

5701
Gaudi

5702
Kahn

5704
Meier

5705
Pei

5706
Yamasaki

5708
Hadid

5709
Wright

Content: 100% Repreve PC Polyester
 Backing: None
 Finish: None
 Cleaning Code: W
 Waterfastness: Class 5 for staining / Class 5 for shade color

Abrasion: Exceeds 250,000 Double Rubs
 Breaking Strength: Warp 199.8 lbs. / Fill 243.5 lbs.
 Crocking: Dry Class 1 / Wet Class 1
 Lightfastness: 40 Hrs. - Class 1
 Flammability: Passes California 117-E; UFAC Class 1; NFPA 260 Class 1

Leathers:



LBLK
Black

LSTN
Stone

LVAN
Vanilla

LWHT
White

Color Fastness: 100 Hrs Exposure. Blue Standard #8
 Finish: Water based protection

Abrasion: Taber test, 1,000 cycles, CS-10, 1,000 grams
 Breaking Strength: Newark Flex 20,000 cycles
 Color Crock: Fek Veslic, 1,000 grams, Tension 10%
 Dry 500 Rubs - Wet 80 Rubs