



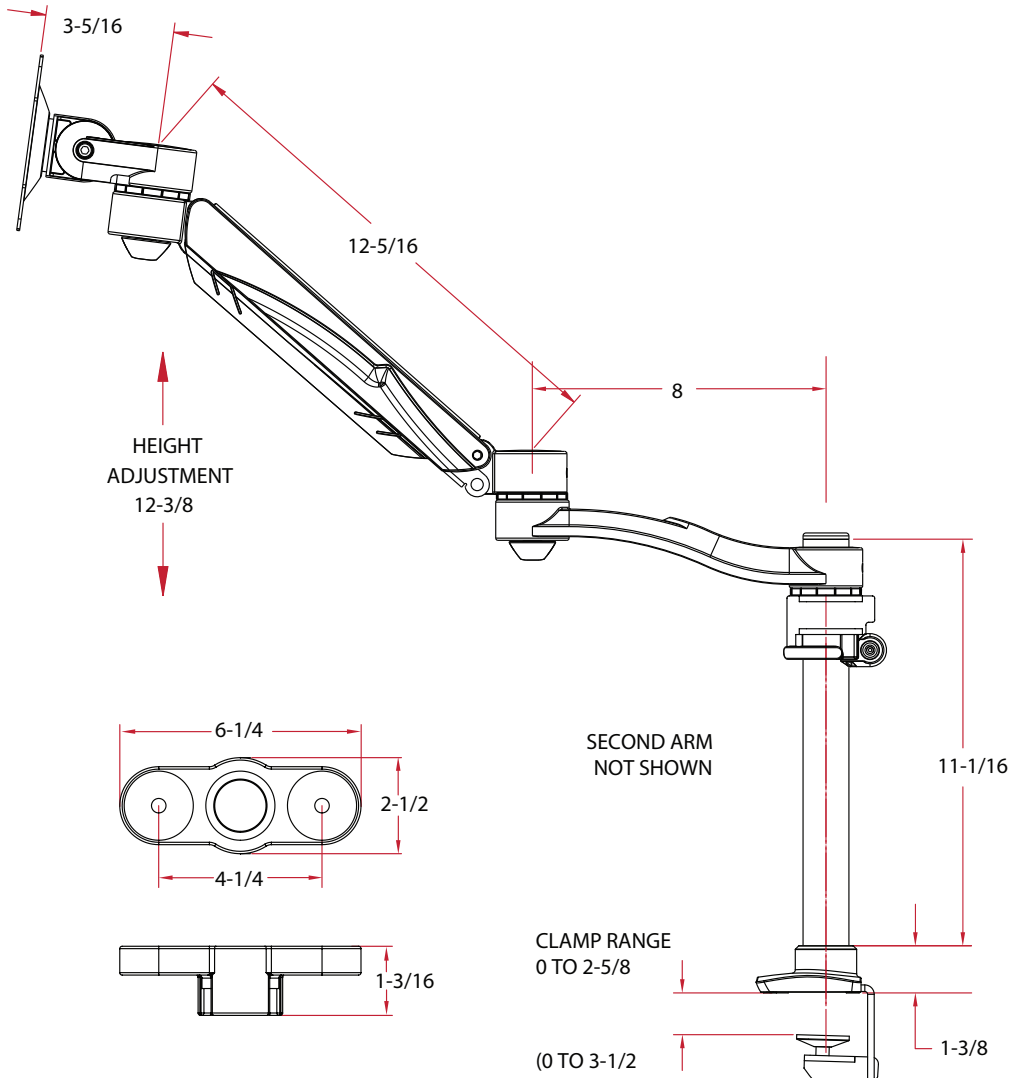
## Concerto Dual Monitor Hub

Item No. 27820SHD12

Flexibility and modularity reach new heights with the new Concerto Dual Mounting Hub. The monitor arm hub provides an ideal solution for multiple monitor configurations. Discover the unlimited possibilities with the new 27820SHD12HD.

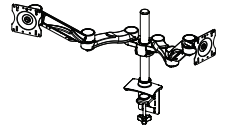
### UNIQUE FEATURES

- The Hub has a locking device to allow it to be firmly clamped to the pole, as well as preventing the arms from rotating, thereby eliminating any play from the monitors, while still allowing the monitor to tilt and swivel
- Flexibility and more options for the end user by creating a level plane for the standard arm configurations, keeping the monitors at the same height
- Hub provides the end-user with the ability to mount two (36" max.) or three screens (18" max.) monitors on a single pole
- Modularity and scalability make this product one of the most adaptable monitor arm solutions available. Monitor arms can be added easily without using all new equipment or discarding parts
- Cable manager keeps all cables organized
- Desk clamp and grommet mount hardware are included to minimize SKUs
- Clamp and grommet adjustable to fit most desks and work surfaces
- Monitor mounting bracket, with Quick Connect option, contains 75x75mm and 100x100mm hole patterns to meet with VESA standards
- Quick Connect allows fast, simple assembly



## Concerto with Height Adjustable Arm

Item No. 27820SHD12



Model	Description
27820HD	Dual-Screen, two Double-Extension Arms, assembled together with Dual Hub