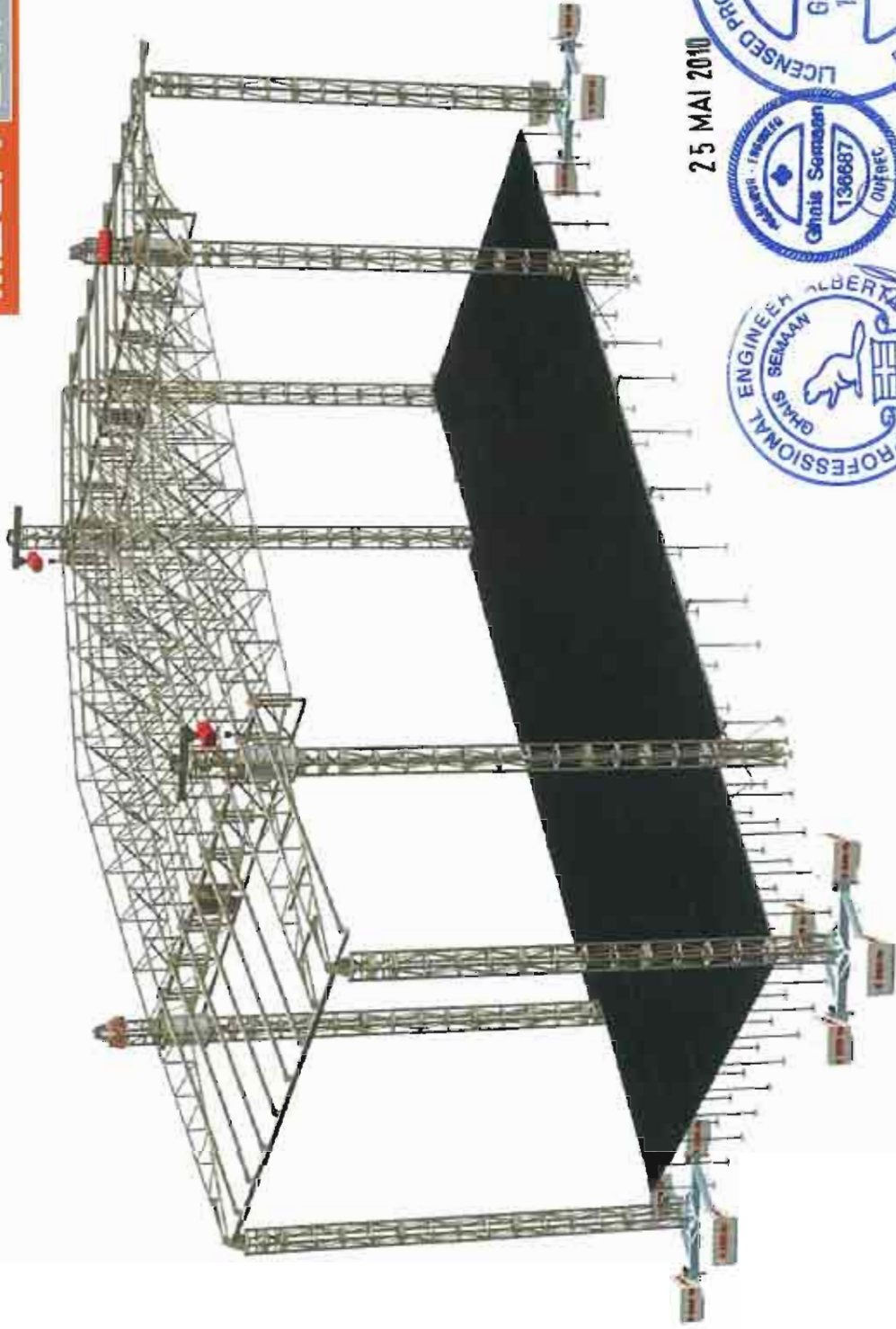


MEGA STAGE



25 MAI 2010



© Mega-Stage 2010
 All rights reserved. May not be reproduced or translated in whole or in part without the written consent of Mega-Stage. R.S.C. 1970, c. C-42, s. 49
 Any such representation or reproduction of this document, by any means, constitutes counterfeiting liable to sanctions by Canadian laws.
 Specifications are subject to change without notice.

Contents



Specifications	Page 1
Front view	Page 2
Side view	Page 3
Top view	Page 4
Weight load distribution	Page 5
Rigging Plan	Page 6
Rigging Details - Secondary trusses C1 to C10	Page 7
Rigging Details - Bay trusses C2 and C3	Page 8
Covered bays front view	Page 9
Covered bays side view	Page 10
Covered bays top view	Page 11
Banners	Page 12
Side banners	Page 13
Bay top banners	Page 14
Center top banner	Page 15
Gallery	Page 16



General specifications

Transport Standard : One (1) 53' Trailer or two (2) depending on options

Other specifications

Floor materials BC Fir plywood
 Load bearing capacity of the floor 750 kg/m² or 150 PSF
 Lateral supports (Sound wings or outriggers) 6,25 m wide x 13,51 m high or 20'-6" wide x 44'-4" high

Overall dimensions

Depth 13,97 m or 45'-10"
 Width 17,2 m or 56'-5"
 29,36 m or 96'-4" with sound wings
 Height 15,04 m or 49'-4"

Design Windspeed with side walls attached 80 km/h or 50 mph
 Design Windspeed without side walls 120 km/h or 75 mph

Motors 5 Ton CM or Stagemaster
 Install time 8 hours with 8 technicians (Basic set-up)
 Transport Standard tractor truck
 Stairs 1,07 m or 42" wide
 Wind screen (sides) Solid Vinagard 16 oz.

Stage dimensions

Floor dimensions 16,26 m x 12,27 m (53'-4" x 40'-3")
 Ground to floor height 1,52 m to 2,65 m (5'-0" to 8'-8 1/2")
 Clearance under trussing 12,05 m or 39'-6 1/2"
 Clearance under roof 12,90 m or 42'-4"

All dimensions and specifications are subject to change without prior notice



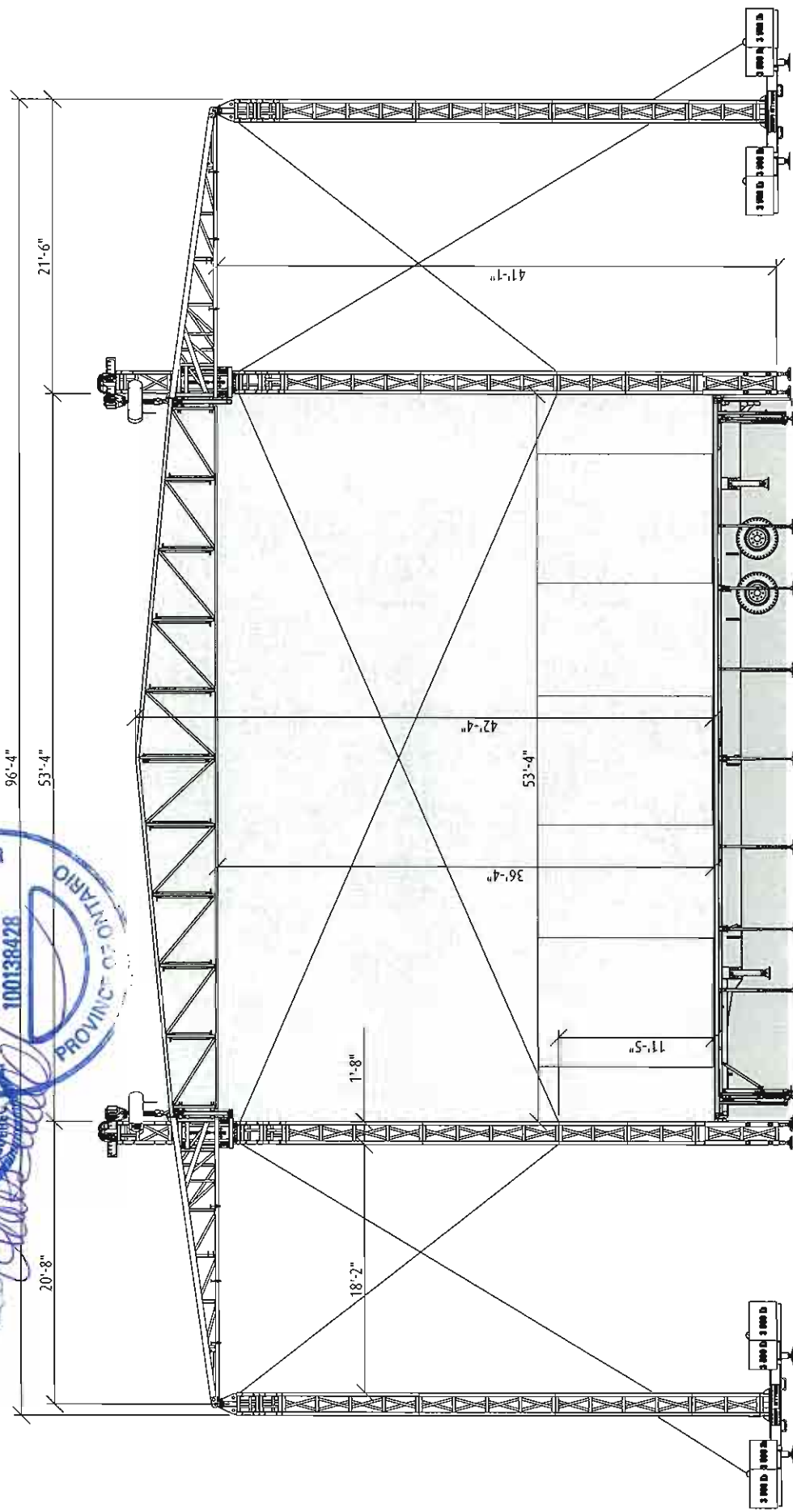
MEGA STAGE

25 MAY 2010

PROFESSIONAL ENGINEER ALBERTA
G. SEMAAN
100138428

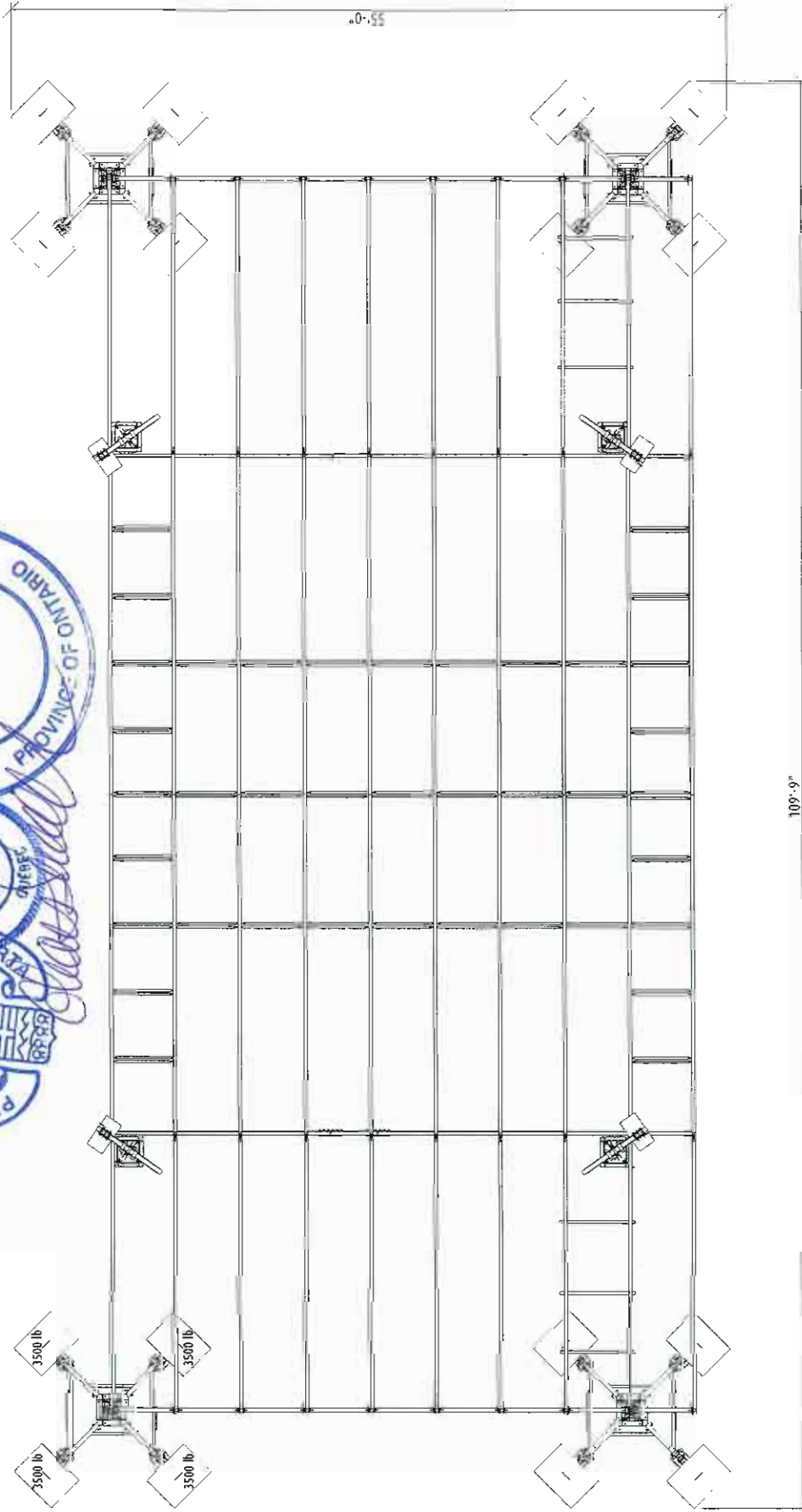
PROFESSIONAL ENGINEER ONTARIO
G. SEMAAN
100138428

CELESTIAL ENGINEERS
Chris Semaan
(739)687-5495



Design Windspeed with side walls attached 80 km/h or 50 mph
 Design Windspeed without side walls 120 km/h or 75 mph

MEGA STAGE





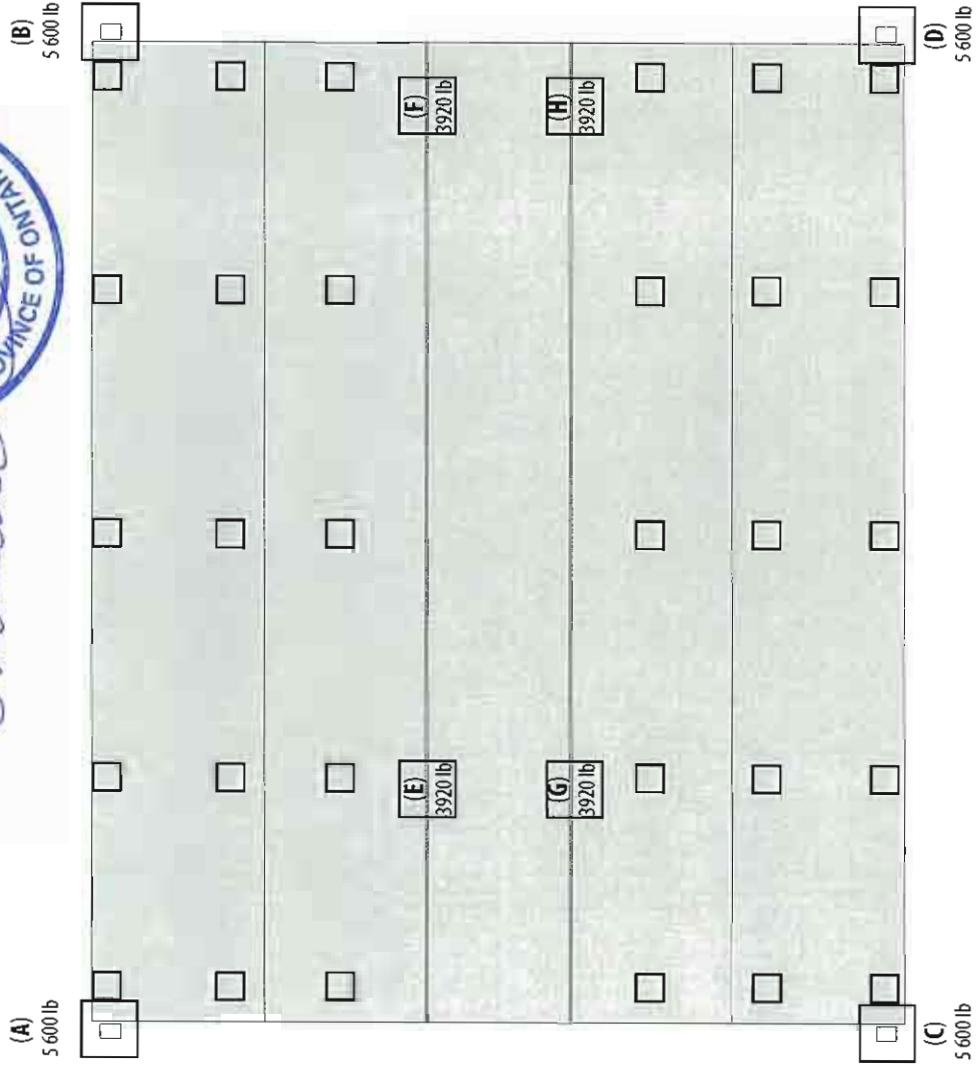
25 MAI 2010



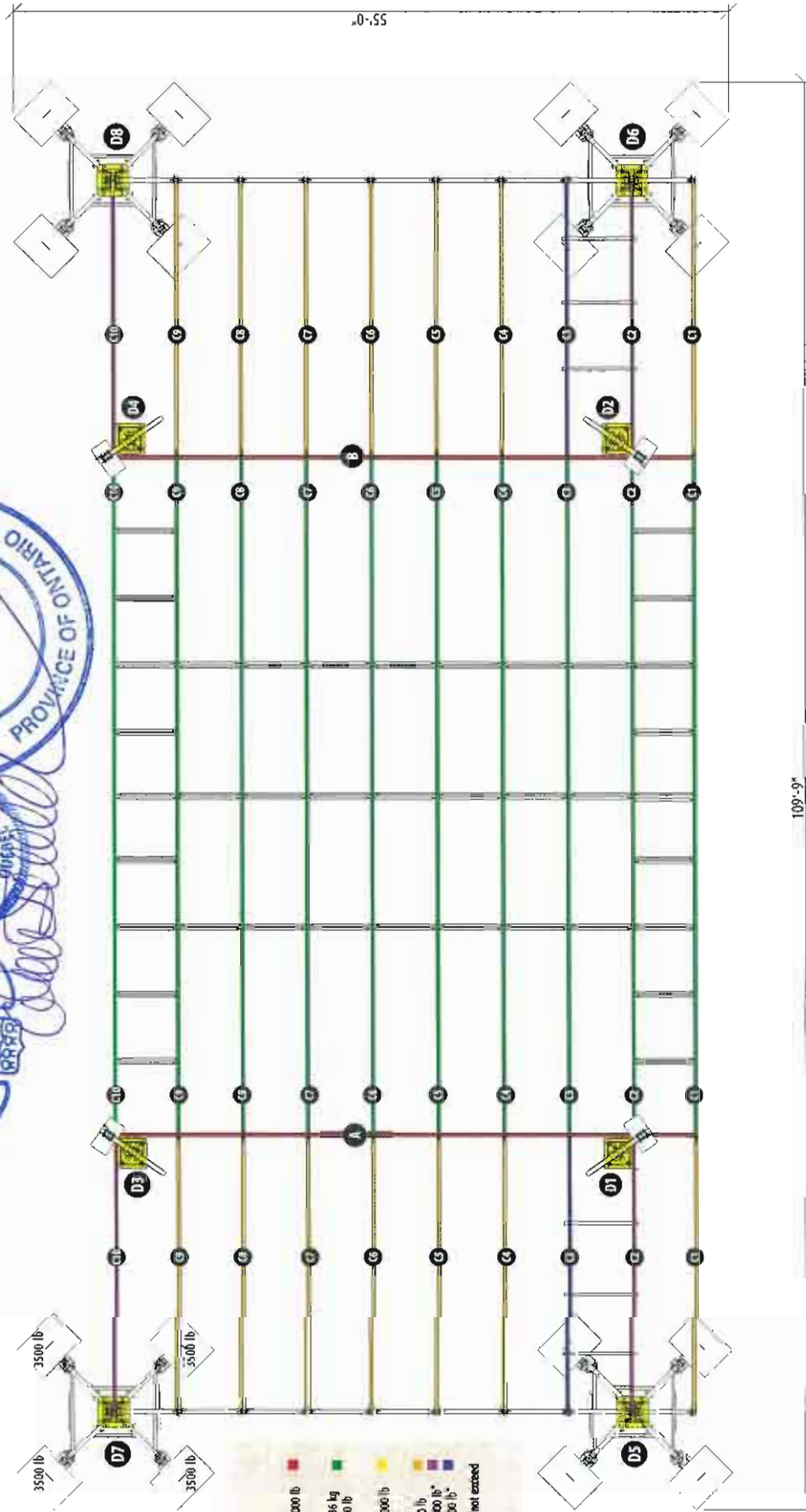
Total weight: 41 645 lb

- Columns (A, B, C & D) 8 600 lb each, over 2 ft x 2 ft area.
- Trailer legs (E, F, G & H) 3 920 lb each, over 2 ft x 2 ft area.
- Adjustment legs () 648 lb each, over 1 ft x 1 ft area.

Note: Loads listed exclude technical equipment which vary from set to set



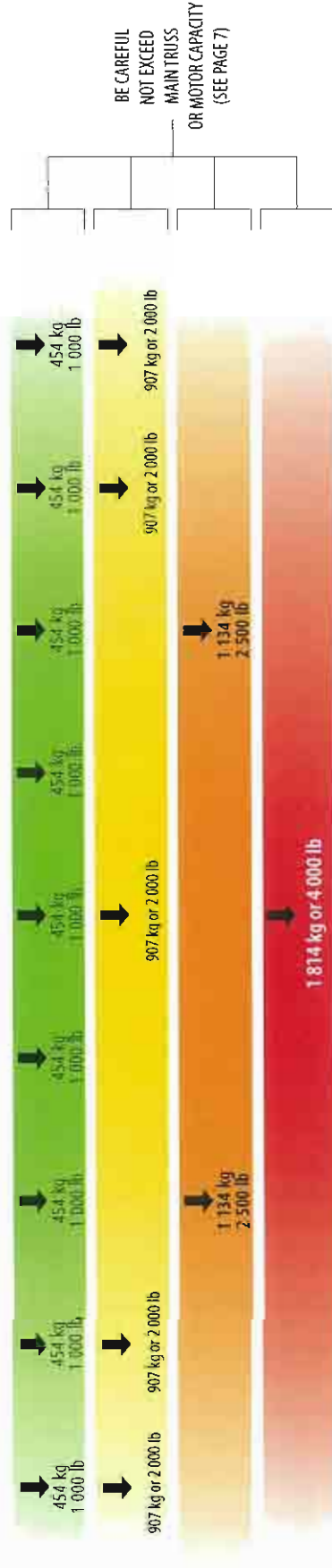
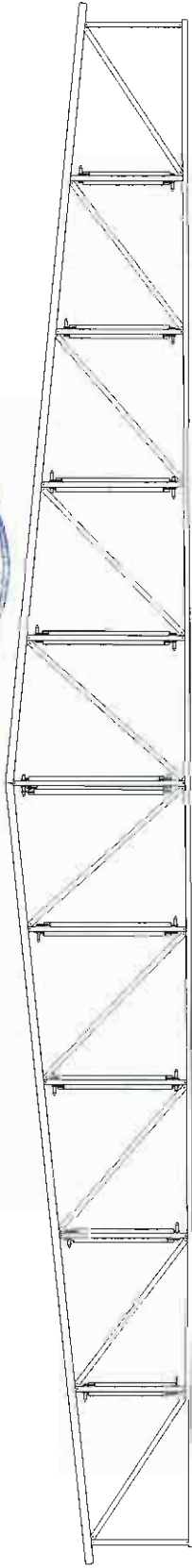
MEGA STAGE



RIGGING CAPACITY PER TRUSS

- Main trusses (A & B) 9 072 kg or 20 000 lb
 - Secondary trusses C1-C10 1 814 kg - 4 536 kg / 4 000 - 10 000 lb
 - Columns (D1-D3) 9 072 kg or 20 000 lb
 - Bay trusses C1 & C2-C3 227 kg or 500 lb
 - C4 & C5-C6 4 536 kg or 10 000 lb
 - C7 & C8-C9 1 361 kg or 3 000 lb
 - C10
- Combined load on C1-C3 must not exceed 10 000 lb

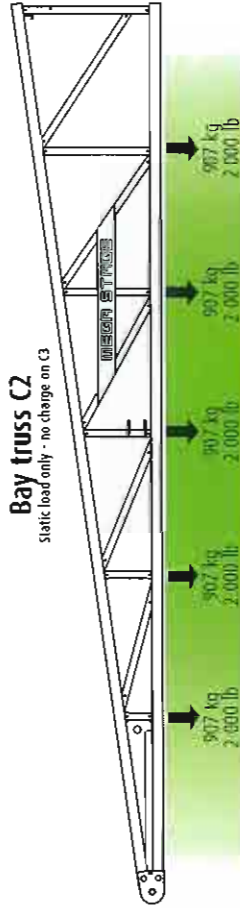
MEGA STAGE



Secondary trusses C1 to C10 rigging chart

Static load only

This quick reference chart does not replace mandatory MEGA-STAGE approved rigging plan

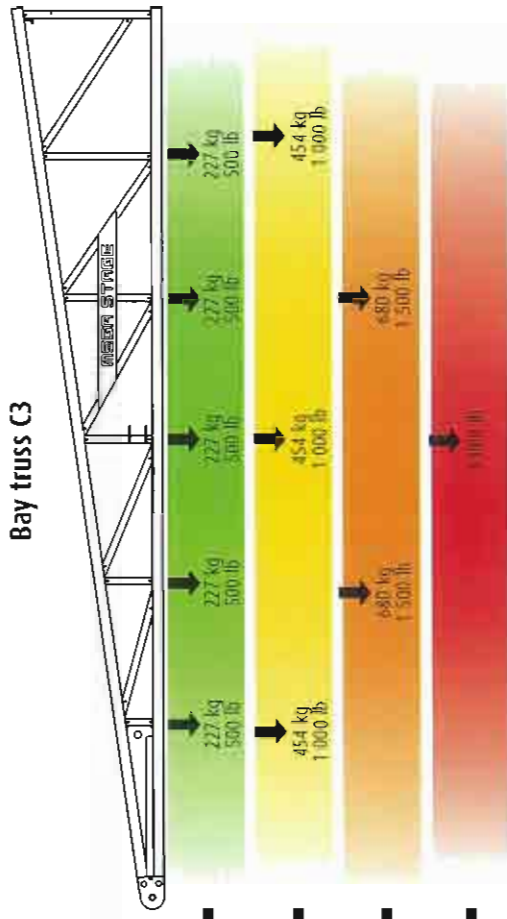
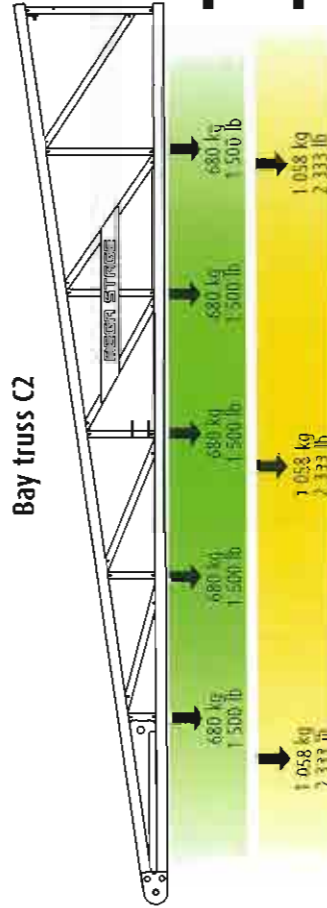
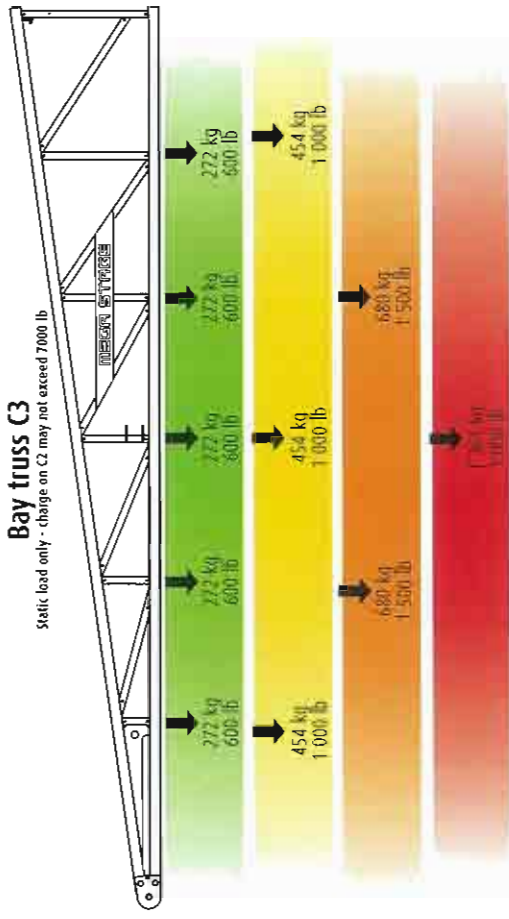


25 MAI 2010

PROFESSIONAL ENGINEER
G. SEMAAN
100138428
PROVINCE OF ONTARIO

PROFESSIONAL ENGINEER
G. SEMAAN
138687
ALBERTA

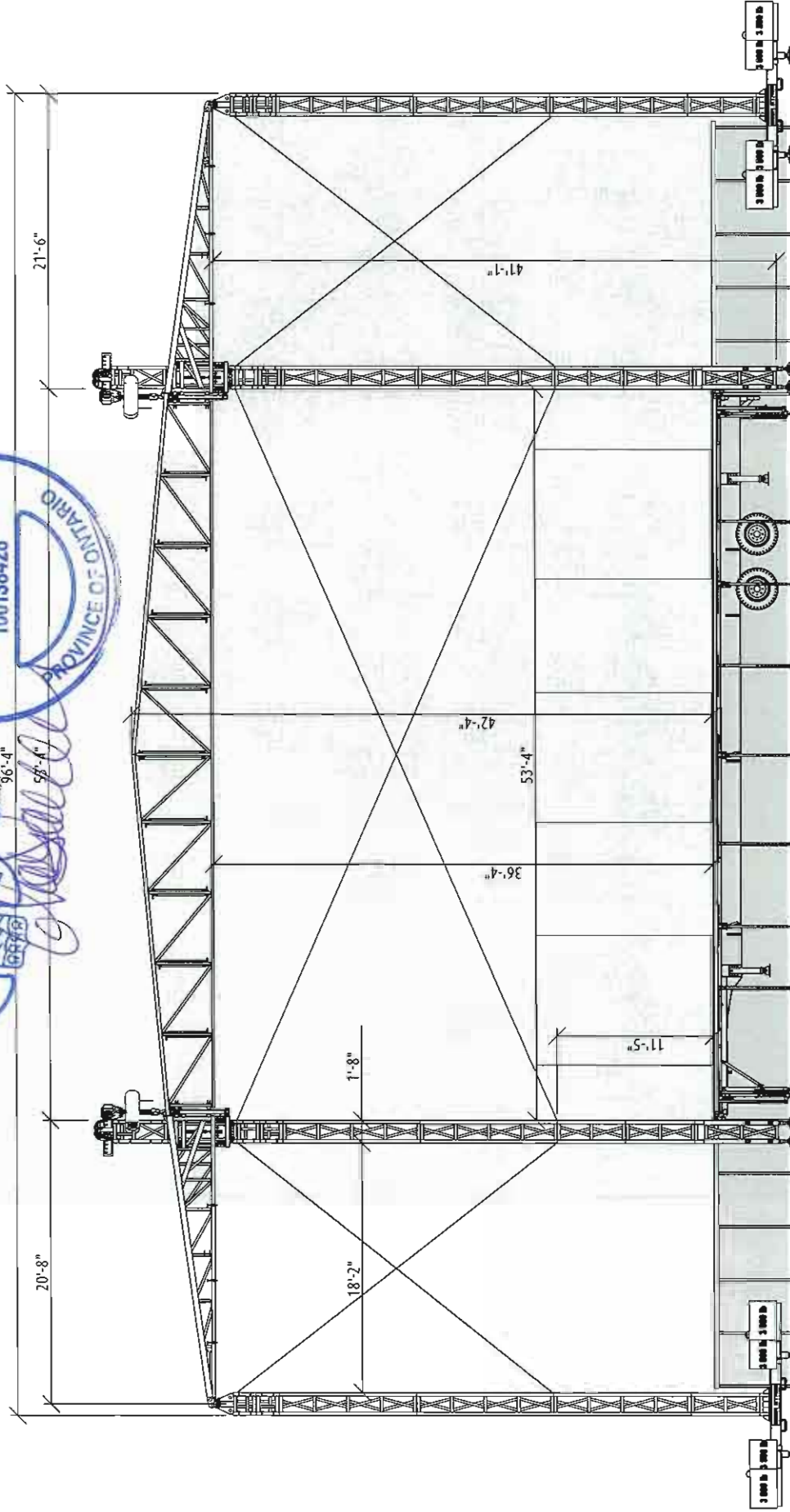
PROFESSIONAL ENGINEER
G. SEMAAN
138687
QUEBEC



Bay trusses C2 and C3 rigging chart
COMBINED LOAD CANNOT EXCEED 10 000 lb
Examples

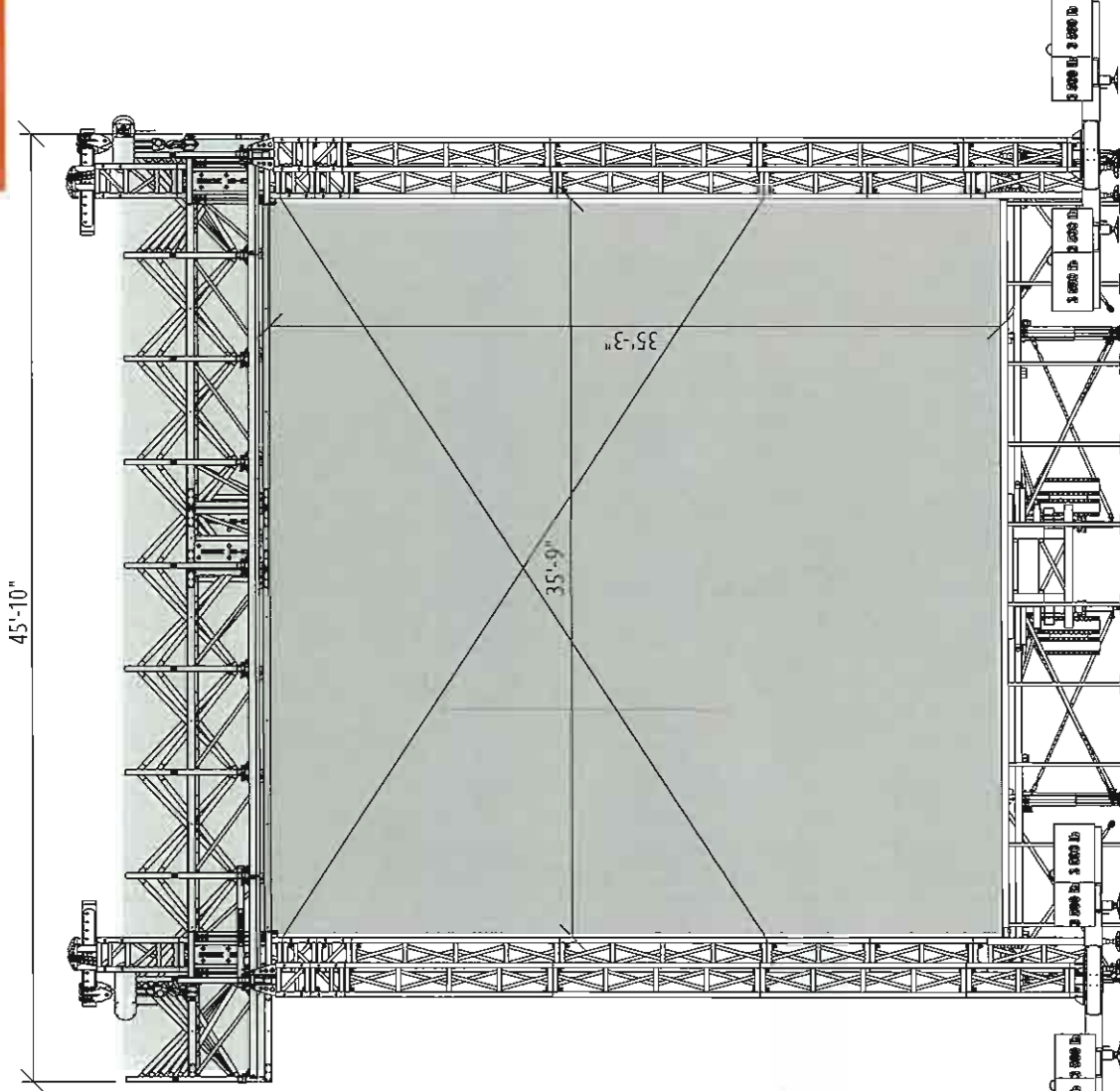
+
+
+
+

MEGA STAGE



Design Windspeed with side walls attached 80 km/h or 50 mph
Design Windspeed without side walls 120 km/h or 75 mph

MEGA STAGE



25 MAY 2011

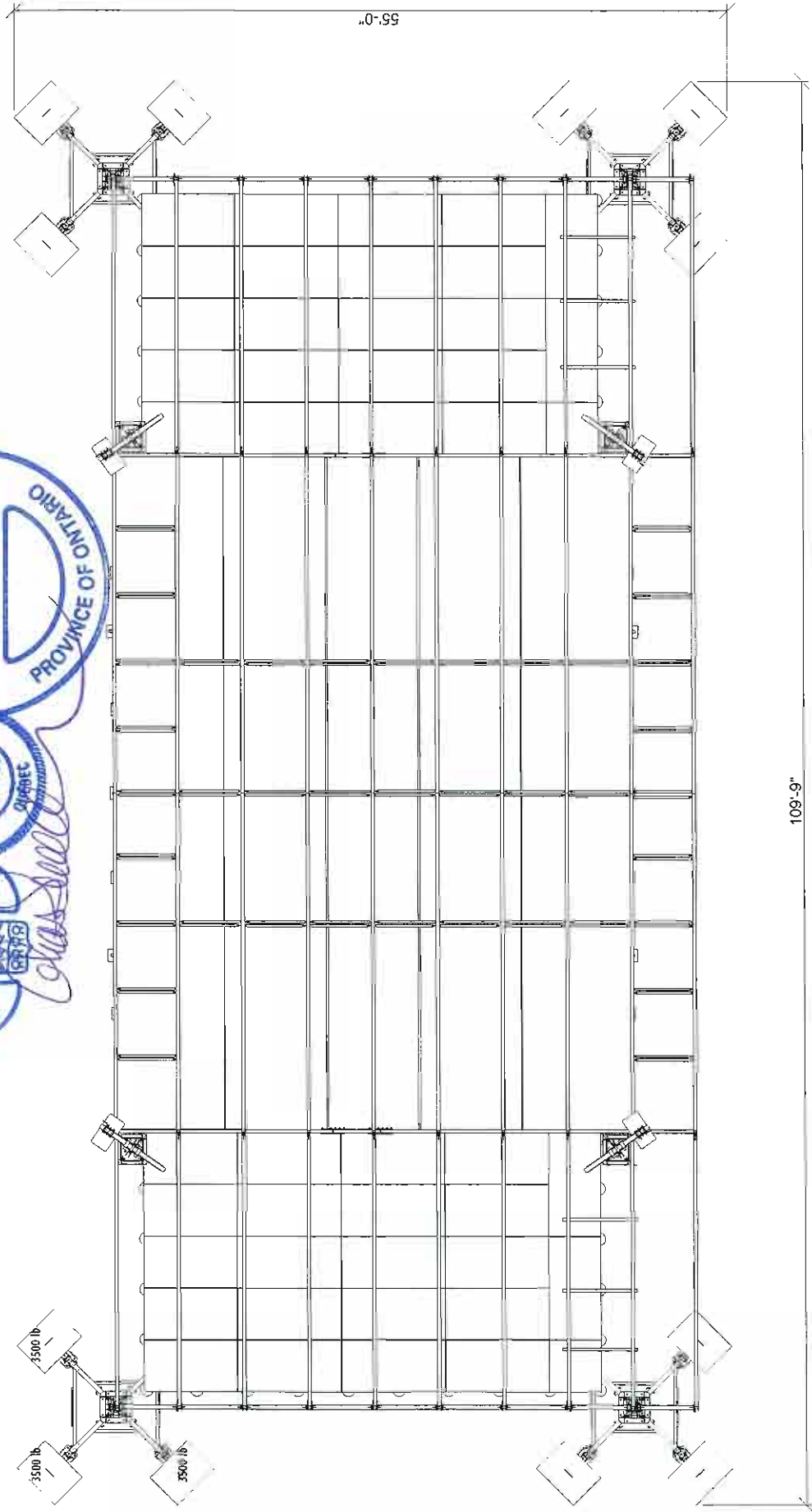
Charles Semaan

PROFESSIONAL ENGINEER ALBERTA
GHAIS SEMAAN
13839

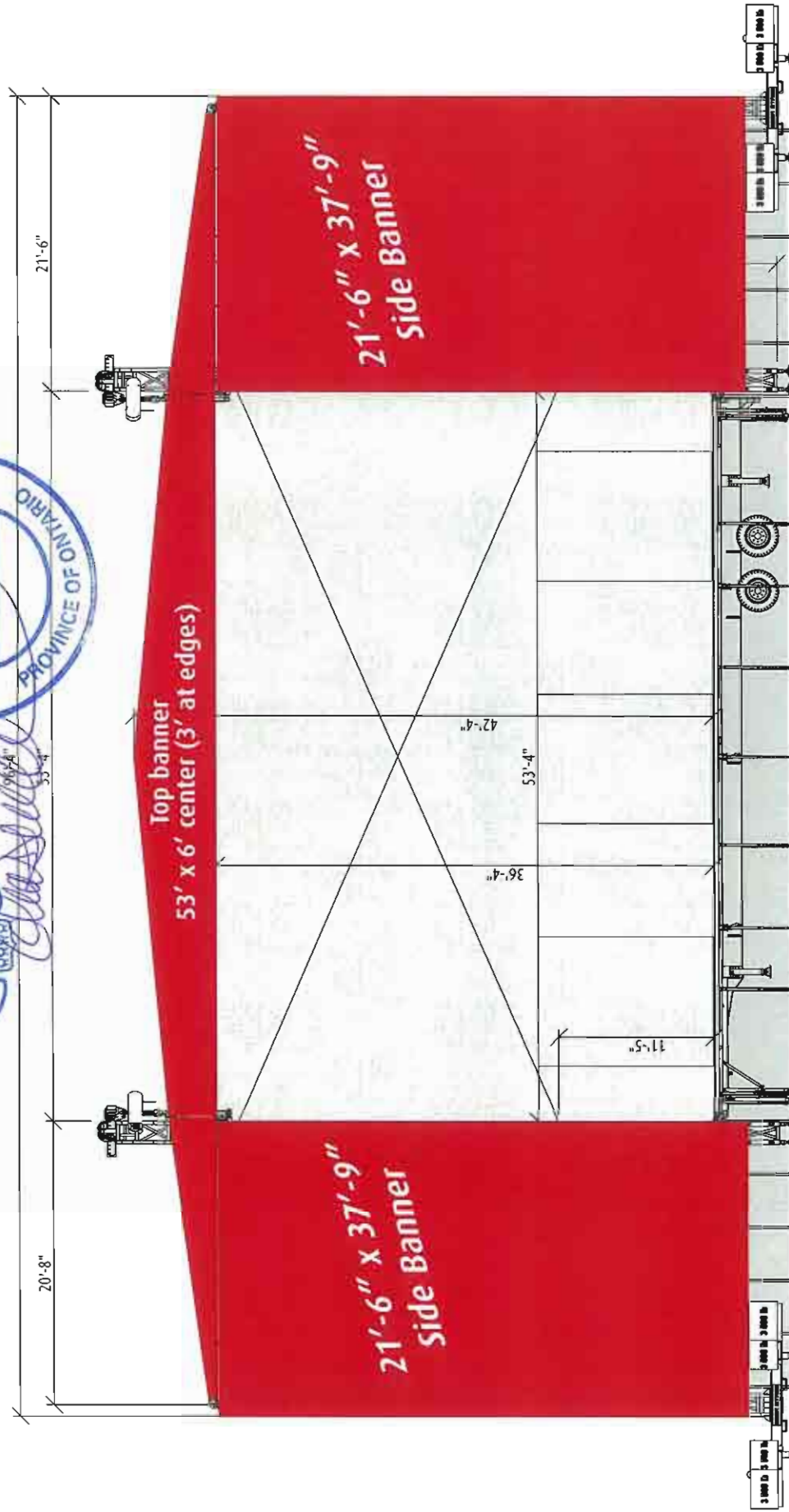
MEMBER - ENGINEER
Ghaïs Semaan
138687
OUREC

PROFESSIONAL ENGINEER
G. SEMAAN
100138428
PROVINCE OF ONTARIO

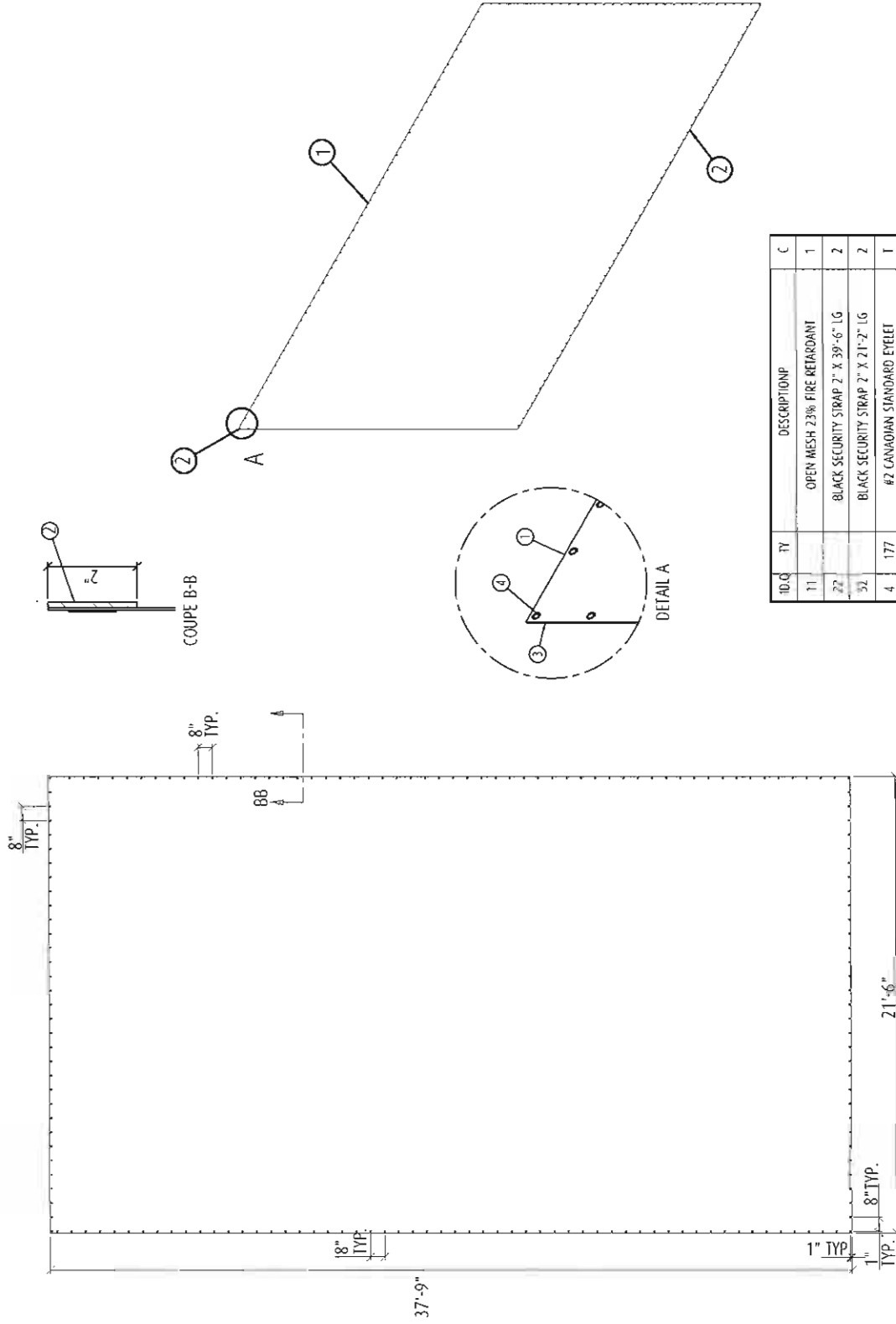
Design Windspeed with side walls attached 80 km/h or 50 mph
 Design Windspeed without side walls 120 km/h or 75 mph



MEGA STAGE

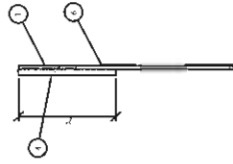


Design Windspeed with side walls attached 80 km/h or 50 mph
 Design Windspeed without side walls 120 km/h or 75 mph

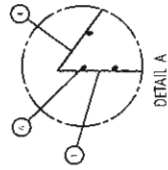




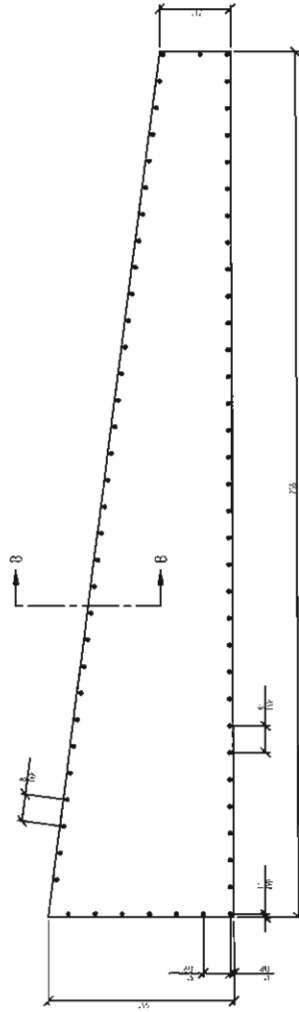
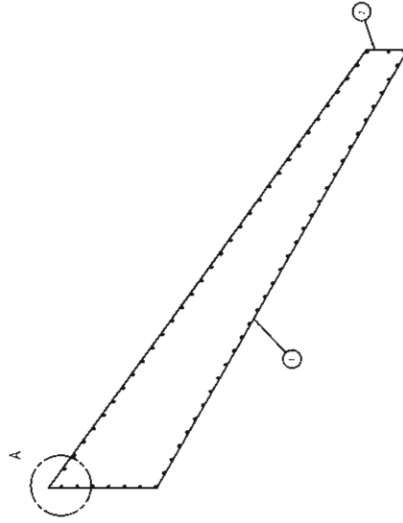
NO.	QTY	DESCRIPTION	UNIT
1	1	PIPE	FT
2	1	PIPE	FT
3	1	PIPE	FT
4	1	PIPE	FT
5	1	PIPE	FT
6	1	PIPE	FT
7	1	PIPE	FT
8	1	PIPE	FT
9	1	PIPE	FT
10	1	PIPE	FT
11	1	PIPE	FT
12	1	PIPE	FT
13	1	PIPE	FT
14	1	PIPE	FT
15	1	PIPE	FT
16	1	PIPE	FT
17	1	PIPE	FT
18	1	PIPE	FT
19	1	PIPE	FT
20	1	PIPE	FT
21	1	PIPE	FT
22	1	PIPE	FT
23	1	PIPE	FT
24	1	PIPE	FT
25	1	PIPE	FT
26	1	PIPE	FT
27	1	PIPE	FT
28	1	PIPE	FT
29	1	PIPE	FT
30	1	PIPE	FT
31	1	PIPE	FT
32	1	PIPE	FT
33	1	PIPE	FT
34	1	PIPE	FT
35	1	PIPE	FT
36	1	PIPE	FT
37	1	PIPE	FT
38	1	PIPE	FT
39	1	PIPE	FT
40	1	PIPE	FT
41	1	PIPE	FT
42	1	PIPE	FT
43	1	PIPE	FT
44	1	PIPE	FT
45	1	PIPE	FT
46	1	PIPE	FT
47	1	PIPE	FT
48	1	PIPE	FT
49	1	PIPE	FT
50	1	PIPE	FT
51	1	PIPE	FT
52	1	PIPE	FT
53	1	PIPE	FT
54	1	PIPE	FT
55	1	PIPE	FT
56	1	PIPE	FT
57	1	PIPE	FT
58	1	PIPE	FT
59	1	PIPE	FT
60	1	PIPE	FT
61	1	PIPE	FT
62	1	PIPE	FT
63	1	PIPE	FT
64	1	PIPE	FT
65	1	PIPE	FT
66	1	PIPE	FT
67	1	PIPE	FT
68	1	PIPE	FT
69	1	PIPE	FT
70	1	PIPE	FT
71	1	PIPE	FT
72	1	PIPE	FT
73	1	PIPE	FT
74	1	PIPE	FT
75	1	PIPE	FT
76	1	PIPE	FT
77	1	PIPE	FT
78	1	PIPE	FT
79	1	PIPE	FT
80	1	PIPE	FT
81	1	PIPE	FT
82	1	PIPE	FT
83	1	PIPE	FT
84	1	PIPE	FT
85	1	PIPE	FT
86	1	PIPE	FT
87	1	PIPE	FT
88	1	PIPE	FT
89	1	PIPE	FT
90	1	PIPE	FT
91	1	PIPE	FT
92	1	PIPE	FT
93	1	PIPE	FT
94	1	PIPE	FT
95	1	PIPE	FT
96	1	PIPE	FT
97	1	PIPE	FT
98	1	PIPE	FT
99	1	PIPE	FT
100	1	PIPE	FT



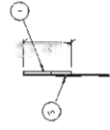
B-B
CROSSCUT



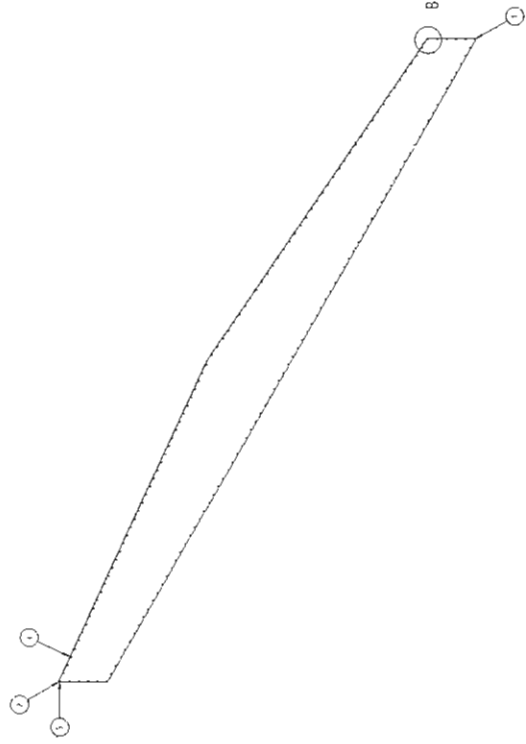
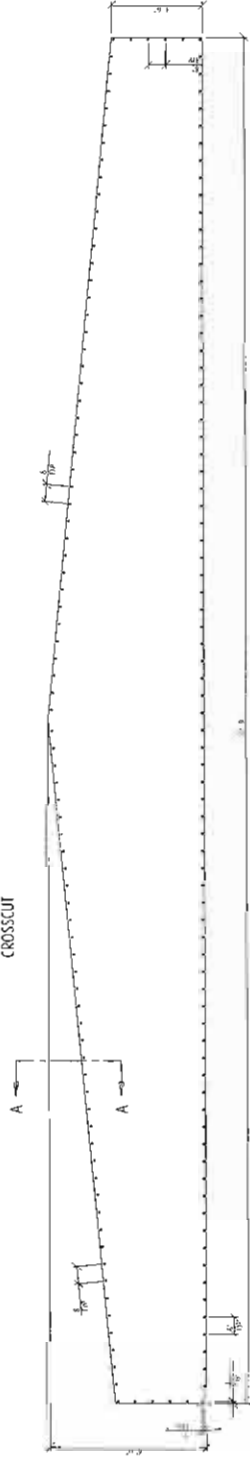
DETAIL A



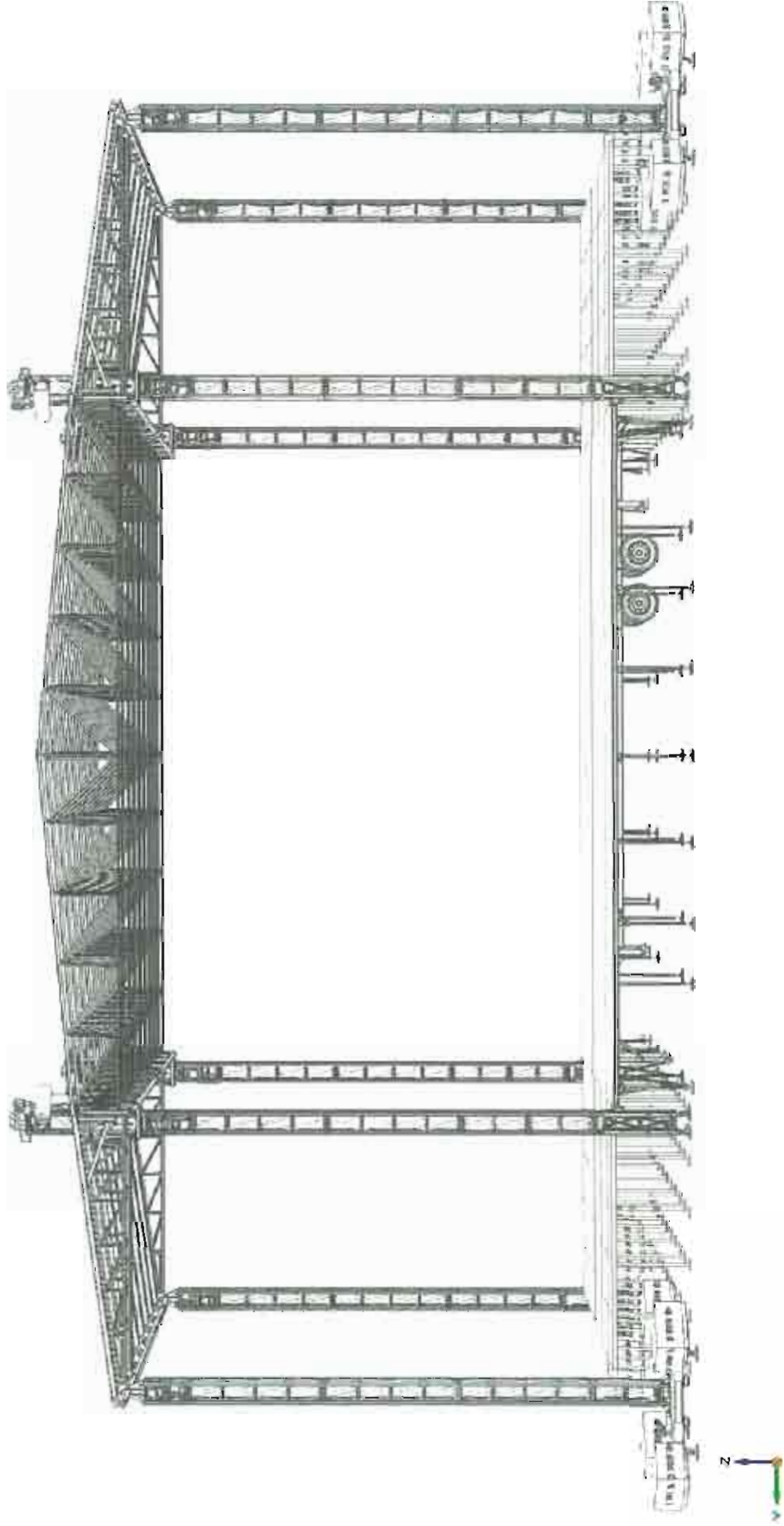
ID	REV	DESCRIPTION	DATE
1	1	ISSUE FOR CONSTRUCTION	04/11/2009
2	1	REVISION: ADD 2" L.S. G.	04/11/2009
3	1	REVISION: ADD 2" A.S. G.	04/11/2009
4	1	REVISION: ADD 2" T.S. G.	04/11/2009
5	1	REVISION: BUREAU 1111	04/11/2009



A-A
CROSSCUT



MEGA STAGE

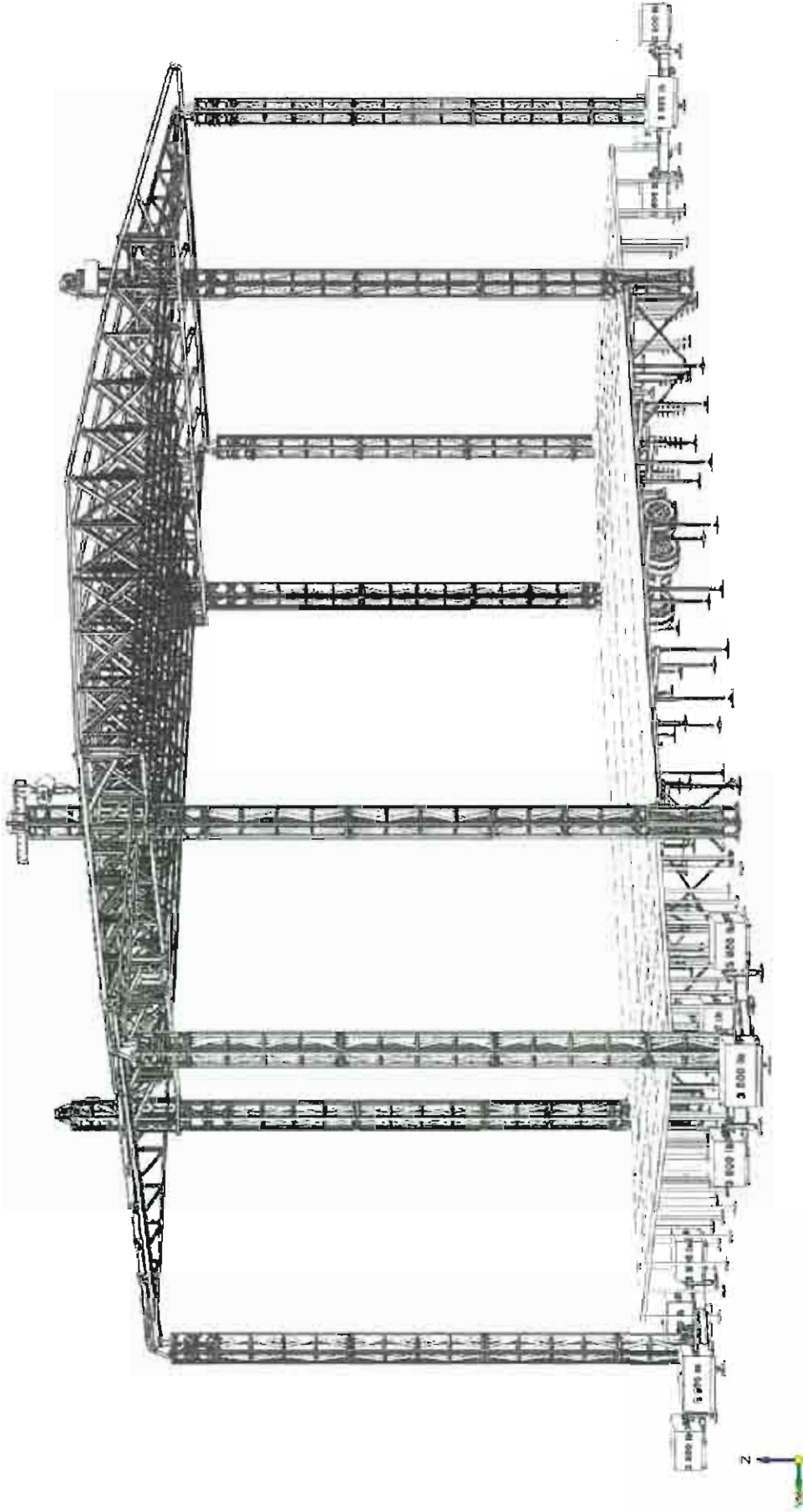


MEGA STAGE



Model 55 50 40

MEGA STAGE

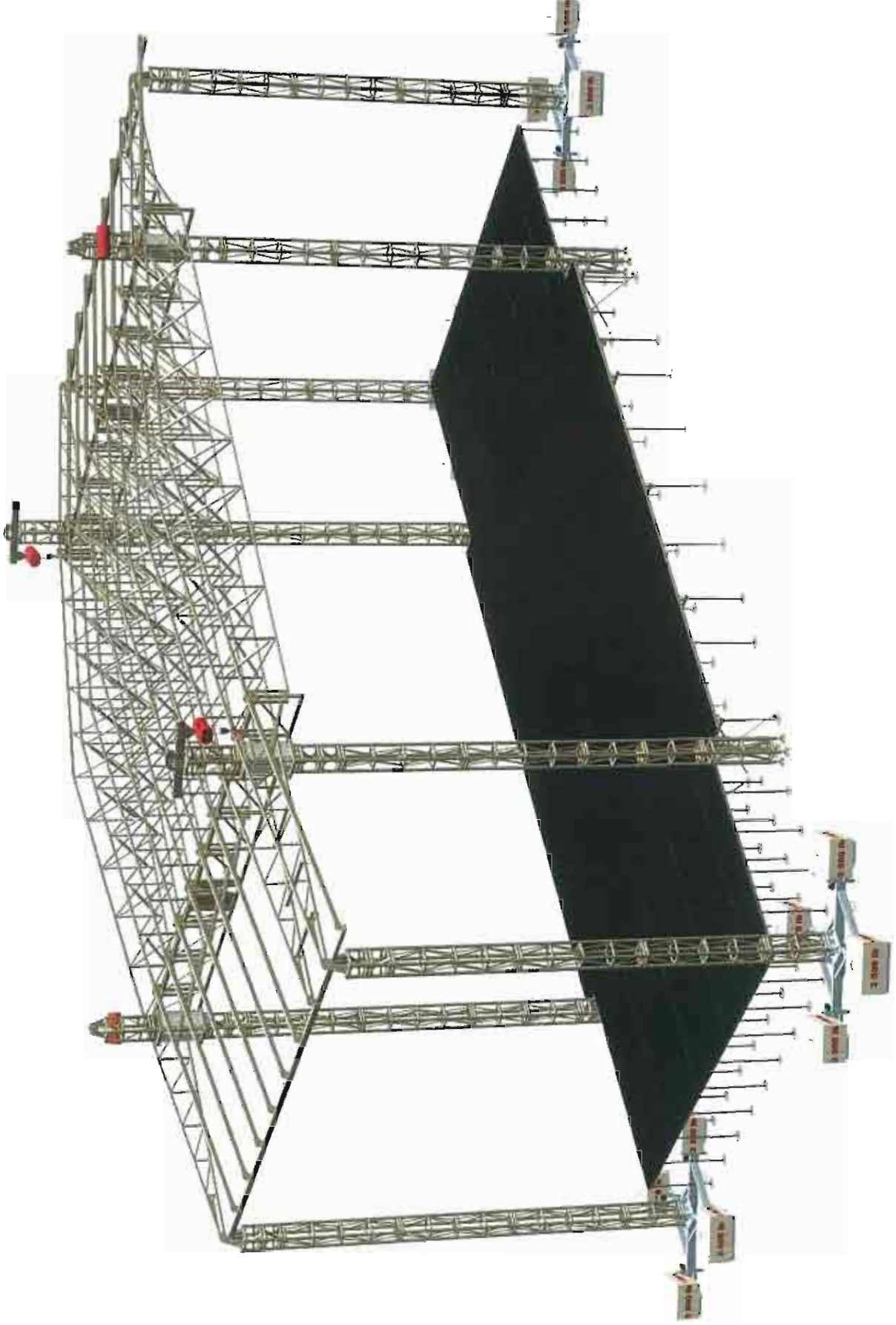


Model 55 50 40



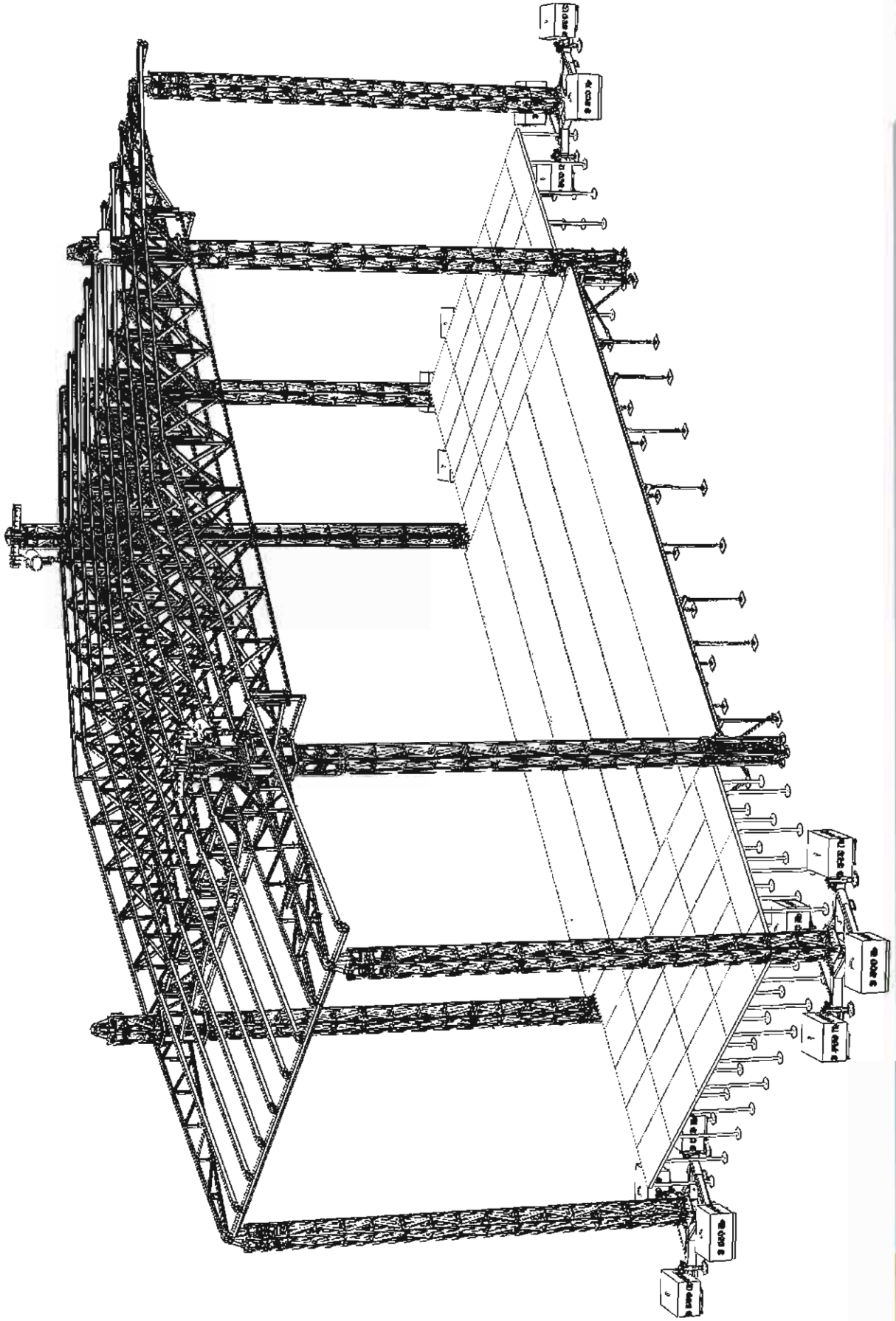
55 - 50 - 40





Model 55 50 40

MEGA STAGE





MEGA STAGE

MODEL 55 50 40

*Specifications subject to change without prior
notice*

© 2010 MEGA-STAGE Inc.

INTERNATIONAL SALES: Mega-Stage Corporate Head Office - 927 Gaudette Street, Industrial Park, Saint-Jean-sur-Richelieu, Qc, Canada J3B 7S7
T: 888-359-4001 Fax: 450-359-4242 Email: info@mega-stage.com www.mega-stage.com