

***Korkers***<sup>®</sup>  
WORK SAFETY CATALOG





21





---

## NECESSITY IS THE MOTHER OF INVENTION

Tired of slipping and falling while navigating the treacherous banks of Oregon's Umpqua River, Korkers founder, Sherman Smith, knew there was a better way. That is what inspired him to build his first carbide cleated traction overshoe back in 1959. What began as a hand-built, crude prototype eventually developed into a refined line of traction based overshoes that have helped first responders, loggers, professional contractors, firemen, and outdoor working professionals of all kinds navigate demanding and extreme conditions.

## OUR STORY CONTINUES

Today, Korkers continues to push boundaries and continues to innovate and "find a better way." While quite a lot has changed since the early beginnings of the company, our dedication to innovation and to building superior footwear has not. Everything that we design, everything that we manufacture is built to protect and perform in extreme and unforgiving conditions. We believe that in today's world gear must perform double duty as conditions change and that performance optimization is critical. That's where Korkers thrives. Whether it be one of our uniquely designed ice cleats or a boot with patented OmniTrax Interchangeable Sole System, our products offer the versatility to do more with less.

No matter where your work may take you, Korkers innovative products will deliver safety and sure-footed confidence with every step.

---

1959

PORTLAND, ORE.

# BORN READY

## OmniTrax 3.0

BECAUSE SLIPPING UP IS  
NEVER AN OPTION...



## Winter Outsole Options



### OA7010 SnowTrac

- » Oil and Acid resistant high traction outsole features deep lugs that work well on most surfaces from soft snow to mud to pavement.
- » Ideal for winter work conditions and situations requiring transitions between indoors and outdoors



### OA7020 IceTrac

- » Same sole as SnowTrac with 32 ultra durable carbide studs per pair.
- » Ideal for extra traction on icy surfaces.



### OA7040 IceTrac Extreme

- » Studded rubber sole with 28 7 mm replaceable carbide-tipped studs per pair.
- » Ideal for extreme ice conditions.

# ICEJACK™ PRO NEW

ENGINEERED TO EXCEL IN EXTREME CONDITIONS.



CSA Z195-14 ASTM 2413-11

» **VERSATILE** OmniTrax® 3.0 Interchangeable Sole System adapts your traction to meet changing weather conditions. Includes two outsoles: SnowTrac Winter Rubber Lug and IceTrac Studded Rubber Lug with carbide studs (32 studs/pair)

» **WATERPROOF** 100% waterproof construction includes waterproof/breathable bootie, waterproof leather, webbing, and stitching to keep the foot bone dry.

» **INSULATED** 600g of 3M™ Thinsulate™ insulation for the ultimate warmth during intense winter conditions.

» **PROTECTIVE** Composite toe work boots that meet ASTM & CSA testing standards, as well as Lenzi puncture resistant construction which protects the foot from sharp objects such as nails and glass. SnowTrac Plain rubber outsole is ESR certified.

» **SUPPORTIVE** 360° rand provides superior support and protection without sacrificing flexibility.

» **DURABLE** Oil and acid resistant non-marking rubber traction outsoles.

» **EASE OF USE:** Low profile Boa® speed lace system for quick on/off while all gloved up.

» **SPECS** 10" height / 4lbs 6oz / pair

» **Sizes:** 8 -14 (whole sizes only)

## 2 Outsoles Included

### IB7720BK

Two outsoles included:

- » SnowTrac
- » IceTrac



Unlike overshoes and other safety cleats with straps, the SnowJack Pro's integrated winter traction design allows for safe operation of delivery vehicles & heavy machinery.

# SNOWJACK™ PRO

BUILT RUGGED, TOUGH AND READY FOR THE JOB.



CSA Z195-14 ASTM 2413-11

- » **VERSATILE** OmniTrax® 3.0 Interchangeable Sole System adapts your traction to meet changing weather conditions. Includes two outsoles: SnowTrac Winter Rubber Lug and IceTrac Studded Rubber Lug with carbide studs (32 studs/pair).
- » **WATERPROOF** 100% waterproof construction includes waterproof/breathable bootie, waterproof leather, webbing, and stitching to keep the foot bone dry.
- » **INSULATED** 400g of 3M™ Thinsulate™ insulation for the ultimate warmth during intense winter conditions.
- » **PROTECTIVE** Composite toe work boots that meet ASTM & CSA testing standards, as well as Lenzi puncture resistant construction which protects the foot from sharp objects such as nails and glass. SnowTrac Plain rubber outsole is ESR certified
- » **SUPPORTIVE** 360° rand provides superior support and protection without sacrificing flexibility.
- » **DURABLE** Oil and acid resistant non-marking rubber traction outsoles.
- » **SPECS** 9" height / 4lbs 3oz / pair
- » **Sizes:** 8-14 (half sizes 9.5, 10.5, 11.5)

## 2 Outsoles Included ↓

### IB7520BK

Two outsoles included:

- » SnowTrac
- » IceTrac

CLICK TO PLAY



PRODUCT VIDEO



Unlike overshoes and other safety cleats with straps, the SnowJack Pro's integrated winter traction design allows for safe operation of delivery vehicles & heavy machinery.

**SAFETY AND SURE-FOOTED CONFIDENCE** WITH EVERY STEP.

***Korkers***<sup>®</sup>

# APEX ICE CLEAT NEW

AGGRESSIVE & DURABLE TRACTION FOR DEMANDING WINTER CONDITIONS.

OA8500



- » **TRACTION** 20 Multi-directional saw-tooth stainless steel cleats offer superior grip on hard packed snow and ice.
- » **DURABILITY** Patent-pending design allows cleats to be mechanically bonded into the TPR platform through injection molding process.
- » **FIT** Pliable TPR support frame contours and fits securely over and around a wide range of shoes and boots.
- » **SPECS** 13.5 oz/pair
- » **SIZES:** M (5-8), L (9-14)

# TRANSIT HEEL CLEAT NEW

PATENT-PENDING HEEL PIVOT & LOCK SYSTEM FOR TRACTION ON-DEMAND.

OA8300



- » **VERSATILE** Traction on the go for work or play. Easily pivot cleats into "storage position" for outdoor/indoor transitions or when traction is not needed.
- » **TRACTION** Equipped with 16 non-sparking, durable, ice biting aluminum studs under the heel of your foot.
- » **EASE OF USE** Quick attach strap and hook closure system for easy on and off.
- » **FIT** Combination of a 3-D molded heel counter at the heel and articulating flex grooves at the base of the cleat provide a secure and comfortable fit across a variety of shoe and boot platforms.
- » **SPECS** 7.2 oz/pair
- » **SIZES:** One size fits most (Women's 6 – Men's 14)

STORAGE POSITION

LOCKED POSITION



TRACTION ON DEMAND



# ULTRA ICE CLEAT

ENGINEERED TO ACHIEVE A CUSTOMIZED FIT.

OA8100  
OA8103



- » **VERSATILE** Proprietary adjustable fit system allows for a custom fit on a wide range of footwear from outdoor boots to work footwear.
- » **TRACTION** Equipped with 16 ice biting steel studs placed under the toe, heel, and ball of your foot for traction where you need it most.
- » **OTHER BELLS & WHISTLES** Includes an easy to use waterproof storage container (OA8100).
- » **SPECS** 4.5 oz/pair
- » **ONE SIZE FITS MOST** (Women's 6 - Men's 14)



OA8100

Ultra Ice Cleats sold in 12 pack merchandising boxes.



OA8103

Ultra Ice Cleats sold in single easy-to-peg packaging.

# ORIGINAL ICE CLEAT

ADDED TRACTION WITHOUT ADDING WEIGHT.

OA8000



- » **VERSATILE** Easy on/off stretch rubber construction secures the cleat for a locked-in fit.
- » **TRACTION** Equipped with 12 ice biting steel studs placed under the toe, heel, and ball of your foot for traction where you need it most.
- » **OTHER BELLS & WHISTLES** Compact design lets you stash 'em in your jacket pocket or glove box for emergencies.
- » **SPECS** 4 oz/pair
- » **SIZES:** M (5 - 8.5), L (8.5 - 11), XL (11.5 - 14), XXL (14 - 15)

# TUFFTRAX™

PROFESSIONAL-GRADE THREADED SPIKES PROVIDE EASY SPIKE CUSTOMIZATION AND EXTEND LIFE OF PRODUCT.

## IA5200 Series



- » **EASE OF USE** Quick release buckle & strap system for easy on/off
- » **SECURE** Molded rubber walls at toe, heel and side provide secure fit
- » **TRACTION** Aggressive rubber lug & steel spike pattern provides traction on any surface
- » **VERSATILE** 36 replaceable threaded steel spikes per pair
- » **INCLUDED** 10 additional replacement spikes and 1 buckle
- » **SIZES:** M (7.5 - 9.5), L (10 - 11.5), XL (12 - 13), XXL (14 - 15)



# TUFFTRAX™ 3-IN-1

3-IN-1 SYSTEM FOR THE ULTIMATE IN VERSATILITY, TRACTION AND PERFORMANCE – MEETS THE NEEDS OF ANY JOB SURFACE AND APPLICATION.

## IA5300 Series



- » **EASE OF USE** Quick release buckle & strap system for easy on/off
- » **SECURE** Molded rubber walls at toe, heel and side provide secure fit
- » **VERSATILE** Fast & easy industrial hook and loop interchangeable sole system to adapt traction
- » **INCLUDED** Soft foam outsole. Medium density and spiked rubber soles sold separately
- » **SIZES:** M (7.5 - 9.5), L (10 - 11.5), XL (12 - 13), XXL (14 - 15)



# WORKTRAX/ WORKTRAX PLUS

SURE-FOOTED TRACTION FOR A VARIETY OF OUTDOOR WORK APPLICATIONS INCLUDING ROOFING.

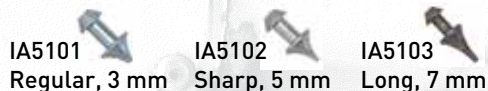
## IA5100 Series

» 28 spikes/pair

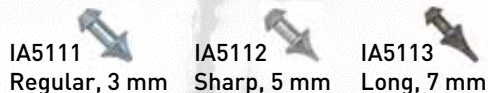


- » **EASE OF USE** Quick release buckle & strap system for easy on/off
- » **SECURE** Molded rubber walls at toe, heel and side provide secure fit
- » **DURABLE** Professional-grade push through steel spikes
- » **SIZES:** M (7.5 - 9.5), L (10 - 11.5), XL (12 - 13), XXL (14 - 15)

### WORKTRAX STYLES INCLUDE: 28 SPIKES/PAIR



### WORKTRAX PLUS STYLES INCLUDE: 52 SPIKES/PAIR



# INSULATED SAFETY BOOTS



**ICEJACK PRO**  
IB7720BK



**SNOWJACK PRO**  
IB7520BK

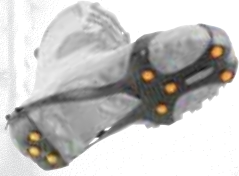
# ICE CLEATS



**APEX ICE CLEAT**  
OA8500



**TRANSIT HEEL CLEAT**  
OA8300



**ULTRA ICE CLEAT**  
OA8100 (Canister Package)  
OA8103 (Easy-to-Peg Package)



**ORIGINAL ICE CLEAT**  
OA8000

# INDUSTRIAL OVERSHOES



**TUFF TRAX**  
IA5200



**TUFF TRAX 3-IN-1**  
IA5300



**WORKTRAX / WORKTRAX PLUS**  
IA5100

# REPLACEMENT SPIKES



40 SPIKES PER PACK/\$19.99 MSRP

**TUFFTRAX THREADED STEEL SPIKES**

IA5011RS Regular, 3 mm    IA5012SS Sharp, 5 mm    IA5013LS Long, 7 mm

**WORKTRAX & WORKTRAX PLUS REPLACEMENT PUSH-THROUGH STEEL SPIKES**

IA1114RC Regular, 3 mm    IA1114SC Sharp, 5 mm    IA1114LC Long, 7 mm



12 SPIKES PER PACK/\$9.99 MSRP

**ULTRA AND ORIGINAL ICE CLEAT STEEL SPIKES**



**KORKERS.COM**

1239 SE 12th Avenue Portland OR 97214  
P: (503) 723-7100 F: (503) 723-7117  
customerservice@korkers.com