



Korkers[®]
2016 FALL CATALOG





NECESSITY IS THE MOTHER OF INVENTION

Tired of slipping and falling while navigating the treacherous banks of Oregon's Umpqua River, Korkers founder, Sherman Smith, knew there was a better way. That is what inspired him to build his first carbide cleated traction overshoe back in 1959. What began as a hand-built, crude prototype eventually developed into a refined line of traction based overshoes that have helped outdoor enthusiasts, outdoor professionals, and people of all kinds navigate demanding and extreme conditions.

OUR STORY CONTINUES

Today, Korkers continues to push boundaries and continues to innovate and "find a better way." While quite a lot has changed since the early beginnings of the company, our dedication to innovation and to building superior footwear has not. Everything that we design, everything that we manufacture is built to protect and perform in extreme and unforgiving conditions. We believe that in today's world gear must perform double duty as conditions change and that performance optimization is critical. That's where Korkers thrives. Whether it be one of our uniquely designed ice cleats or a boot with patented OmniTrax Interchangeable Sole System, our products offer the versatility to do more with less.

No matter where your next adventure may take you, Korkers innovative products will deliver with every step.

Since
1959

PORTLAND, ORE.



Korkers delivers the new standard
in winter boot performance.

WATERPROOF INSULATED
TWICE THE TRACTION

OmniTrax

3.0



BECAUSE SLIPPING UP IS NEVER AN OPTION...

Winter Outsole Options



OA7010 SnowTrac

- » Winter rubber lug sole grips equally well in wet or dry conditions.
- » Ideal for winter trail conditions and situations requiring transitions between indoors and outdoors.



OA7020 IceTrac

- » Same sole as SnowTrac with 32 ultra durable carbide studs per pair.
- » Ideal for extra traction on icy surfaces.



OA7040 IceTrac Extreme

- » Studded rubber sole with 28 7 mm replaceable carbide-tipped studs per pair.
- » Ideal for extreme ice conditions such as ice fishing and winter trekking.

TUNDRAJACK™

ENGINEERED FOR EXTREME PERFORMANCE.



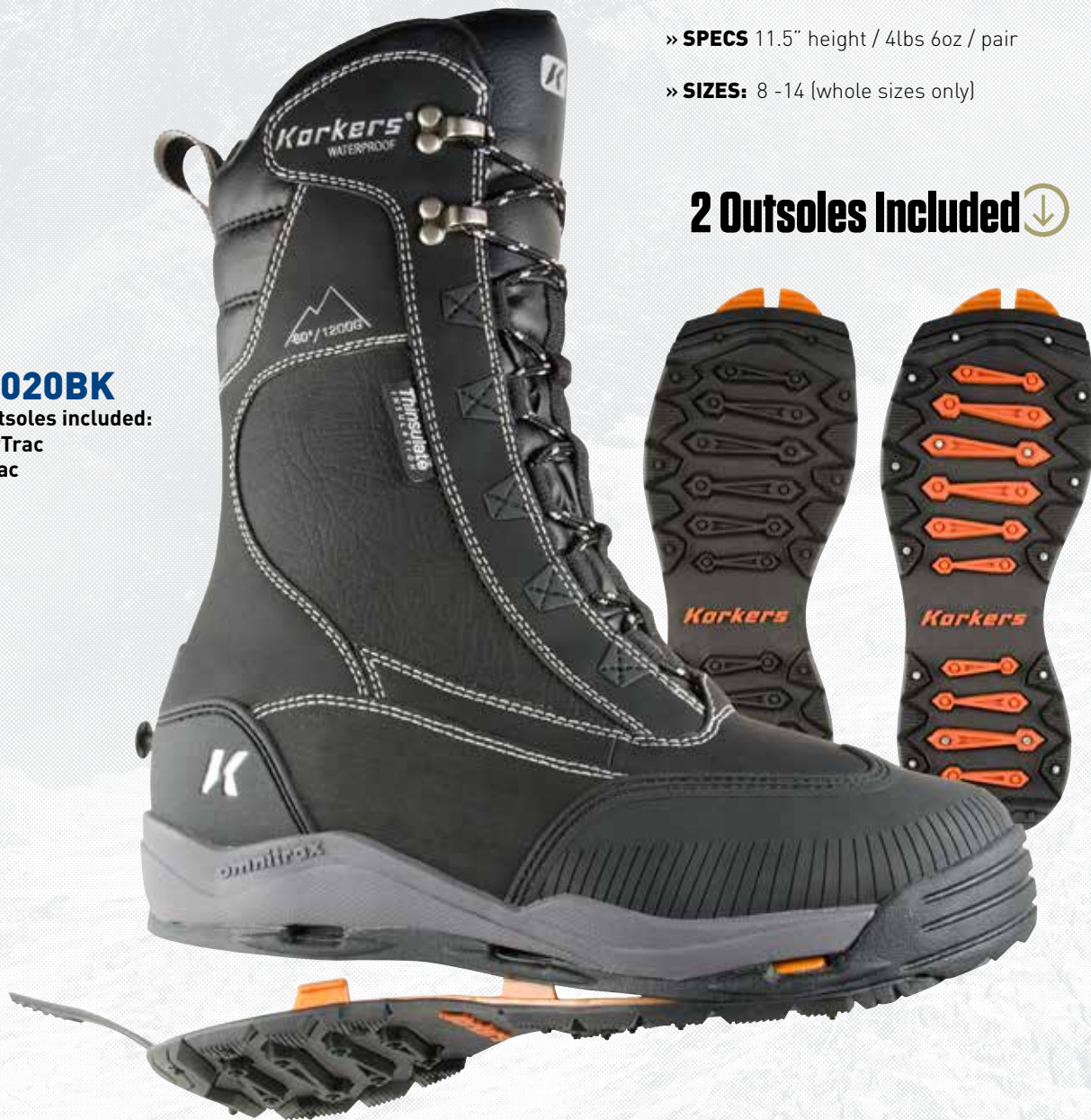
- » **VERSATILE** OmniTrax® 3.0 Interchangeable Sole System adapts your traction to meet changing weather conditions. Includes two outsoles: SnowTrac Winter Rubber Lug and IceTrac Studded Rubber Lug with carbide studs (32 studs/pair).
- » **WATERPROOF** 100% waterproof construction includes waterproof/breathable bootie, waterproof leather, webbing, and stitching to keep the foot bone dry.
- » **INSULATED** 1200g of 3M™ Thinsulate™ insulation for the ultimate warmth during less active adventures like ice fishing and snowmobiling.
- » **SUPPORTIVE** 360° rand provides superior support and protection without sacrificing flexibility.
- » **OTHER BELLS & WHISTLES** Extra tall silhouette provides protection and support.
- » **SPECS** 11.5" height / 4lbs 6oz / pair
- » **SIZES:** 8 -14 (whole sizes only)

2 Outsoles Included

OB8020BK

Two outsoles included:

- » SnowTrac
- » IceTrac



ICEJACK™ BOA®

DIALED-IN FIT FOR SURE-FOOTED PERFORMANCE.



- » **VERSATILE** OmniTrax® 3.0 Interchangeable Sole System adapts your traction to meet changing weather conditions. Includes two outsoles: SnowTrac Winter Rubber Lug and IceTrac Studded Rubber Lug with carbide studs (32 studs/pair)
- » **WATERPROOF** 100% waterproof construction includes waterproof/breathable bootie, waterproof leather, webbing, and stitching to keep the foot bone dry.
- » **INSULATED** 600g of 3M™ Thinsulate™ insulation keep your toes and feet nice and toasty during cold winter weather.
- » **SUPPORTIVE** 360° rand provides superior support and protection without sacrificing flexibility.
- » **OTHER BELLS & WHISTLES** Low profile Boa® speed lace system for quick on/off while all gloved up.
- » **SPECS** 10" height / 3lbs 5oz / pair
- » **SIZES:** 7 -14 (whole sizes only)

2 Outsoles Included ↓

OB7720GM

Two outsoles included:

- » SnowTrac
- » IceTrac



SNOWJACK™

BUILT RUGGED & READY FOR ANYTHING.



- » **VERSATILE** OmniTrax® 3.0 Interchangeable Sole System adapts your traction to meet changing weather conditions. Includes two outsoles: SnowTrac Winter Rubber Lug and IceTrac Studded Rubber Lug with carbide studs (32 studs/pair)
- » **WATERPROOF** 100% waterproof construction includes waterproof/breathable bootie, waterproof leather, webbing, and stitching to keep the foot bone dry.
- » **INSULATED** 400g of 3M™ Thinsulate™ insulation for the ultimate warmth during intense adventures like snowshoeing and hiking.
- » **SUPPORTIVE** 360° rand provides superior support and protection without sacrificing flexibility.
- » **SPECS** 9" height / 3lbs 7oz / pair
- » **SIZES:** 8-14 (half sizes 9.5, 10.5, 11.5)

2 Outsoles Included ↓

OB7520GM

Two outsoles included:

- » SnowTrac
- » IceTrac



OB7520BK

Two outsoles included:

- » SnowTrac
- » IceTrac



STORMJACK™

LIGHT, TOUGH & ENGINEERED FOR EVERYDAY.



- » **VERSATILE** OmniTrax® 3.0 Interchangeable Sole System adapts your traction to meet changing weather conditions. Includes two outsoles: SnowTrac Winter Rubber Lug and IceTrac Studded Rubber Lug with carbide studs (32 studs/pair)
- » **WATERPROOF** 100% waterproof construction includes waterproof/breathable bootie, waterproof leather, webbing, and stitching to keep the foot bone dry.
- » **INSULATED** 200g of critical 3M™ Thinsulate™ insulation in toe and tongue for strategic warmth without overheating.
- » **SUPPORTIVE** Molded heel cap delivers superior support without sacrificing flexibility.
- » **SPECS** 7.5" height / 2lbs 10oz / pair
- » **SIZES:** 8-14 (half sizes 9.5, 10.5, 11.5)

2 Outsoles Included

OB7320GM

Two outsoles included:

- » SnowTrac
- » IceTrac



EXTREME ICE CLEAT

BUILT FOR THE MOST BRUTAL CONDITIONS.

- » **VERSATILE** Quick-release buckle and strap system for easy on/off.
- » **SECURE** Molded rubber walls at toe, heel, and side provide a super-durable, secure fit.
- » **TRACTION** 28 durable push through spike construction on the heel and ball of the foot for ice biting traction where you need it.
- » **SPECS** 2lbs 8oz / pair
- » **SIZES:** M (7.5 - 9.5), L (10 - 11.5), XL (12 - 13.5), XXL (14 - 15)

0A5100



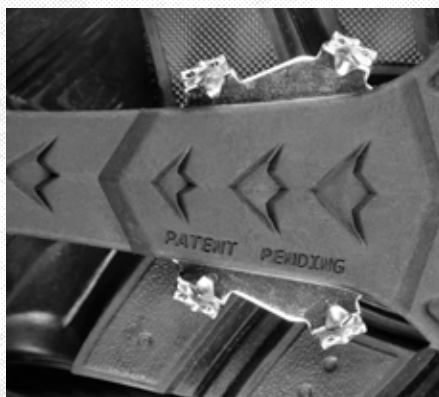
NEW

APEX ICE CLEAT

AGGRESSIVE & DURABLE TRACTION FOR DEMANDING WINTER CONDITIONS.

0A8500

- » **TRACTION** 20 Multi-directional saw-tooth stainless steel cleats offer superior grip on hard packed snow and ice.
- » **DURABILITY** Patent-pending design allows cleats to be mechanically bonded into the TPR platform through injection molding process.
- » **FIT** Pliable TPR support frame contours and fits securely over and around a wide range of shoes and boots.
- » **SPECS** 13.5 oz/pair
- » **SIZES:** M (5-8), L (9-14)



NEW

TRANSIT HEEL CLEAT

PATENT-PENDING HEEL PIVOT & LOCK SYSTEM FOR TRACTION ON-DEMAND.

- » **VERSATILE** Traction on the go for work or play. Easily pivot cleats into "storage position" for outdoor/indoor transitions or when traction is not needed.
- » **TRACTION** Equipped with 16 non-sparking, durable, ice biting aluminum studs under the heel of your foot.
- » **EASE OF USE** Quick attach strap and hook closure system for easy on and off.
- » **FIT** Combination of a 3-D molded heel counter at the heel and articulating flex grooves at the base of the cleat provide a secure and comfortable fit across a variety of shoe and boot platforms.
- » **SPECS** 7.2 oz/pair
- » **SIZES:** One size fits most (Women's 6 – Men's 14)

OA8300



Storage Position

Locked Position



TRACTION ON DEMAND

ULTRA ICE CLEAT

ENGINEERED TO ACHIEVE A CUSTOMIZED FIT.

OA8100
OA8103



- » **VERSATILE** Proprietary adjustable fit system allows for a custom fit on a wide range of footwear from trail running shoes to outdoor boots.
- » **TRACTION** Equipped with 16 ice biting steel studs placed under the toe, heel, and ball of your foot for traction where you need it most.
- » **OTHER BELLS & WHISTLES** Includes an easy to use waterproof storage container (OA8100).
- » **SPECS** 4.5 oz/pair
- » **ONE SIZE FITS MOST** (Women's 6 - Men's 14)



OA8100

Ultra Ice Cleats sold in 12 pack merchandising boxes.



OA8103

Ultra Ice Cleats sold in single easy-to-peg packaging.

ORIGINAL ICE CLEAT

ADDED TRACTION WITHOUT ADDING WEIGHT.

» **VERSATILE** Easy on/off stretch rubber construction secures the cleat for a locked-in fit.

» **TRACTION** Equipped with 12 ice biting steel studs placed under the toe, heel, and ball of your foot for traction where you need it most.

» **OTHER BELLS & WHISTLES** Compact design lets you stash 'em in your jacket pocket or glove box for emergencies.

» **SPECS** 4 oz/pair

» **SIZES:** M (5 - 8.5), L (8.5 - 11), XL (11.5 - 14), XXL (14 - 15)

OA8000



WINTER BOOTS



TUNDRAJACK
OB8020BK



ICEJACK
OB7720GM



SNOWJACK
OB7520GM



SNOWJACK
OB7520BK



STORMJACK
OB7320GM

ICE CLEATS



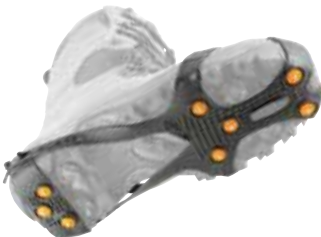
EXTREME ICE CLEAT
OA5100



APEX ICE CLEAT
OA8500



TRANSIT HEEL CLEAT
OA8300



ULTRA ICE CLEAT
OA8100 (Canister Package)
OA8103 (Easy-to-Peg Package)



ORIGINAL ICE CLEAT
OA8000



KORKERS.COM

1239 SE 12th Avenue Portland OR 97214
P: (503) 723-7100 F: (503) 723-7117
customerservice@korkers.com