



Essential Validation Services





Sample:

Client: | Nature's Fusions
Sample: | Frankincense Carteri (Boswellia Carterii)
Batch # | NF-FRAN-18-A
CAS Number | 8016-36-2
Type: | Essential Oil

Conclusion:

- No adulterants, diluents, or contaminants were detected via this method.
- This oil meets the expected profile for genuine essential oil of Frankincense Carteri (Boswellia Carterii) chemotype Limonene.

X

Validated By:



Essential Validation Services

747 SW 2nd Ave, Gainesville, FL 32601

Phone: 317-361-5044 E-mail: Adam@essentialvalidationservices.com

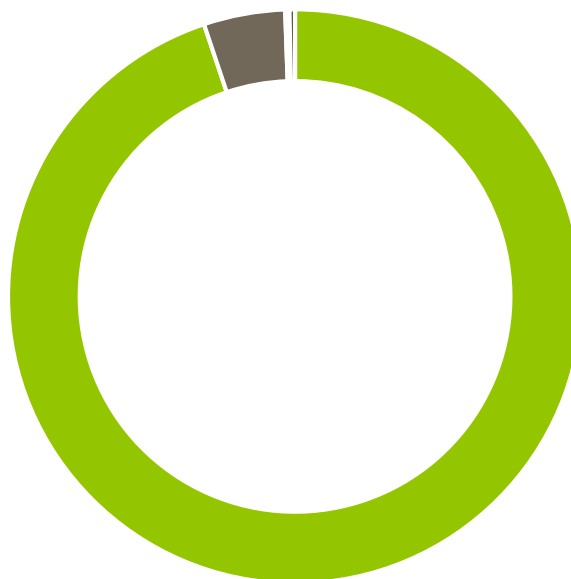
Summary of Analyses

A fresh sample Frankincense Carteri (Boswellia Carterii) Essential Oil (10 uL in .5to.5 mL Hexane + ETOH) was prepared and analyzed via split injection GC/EI-MS.



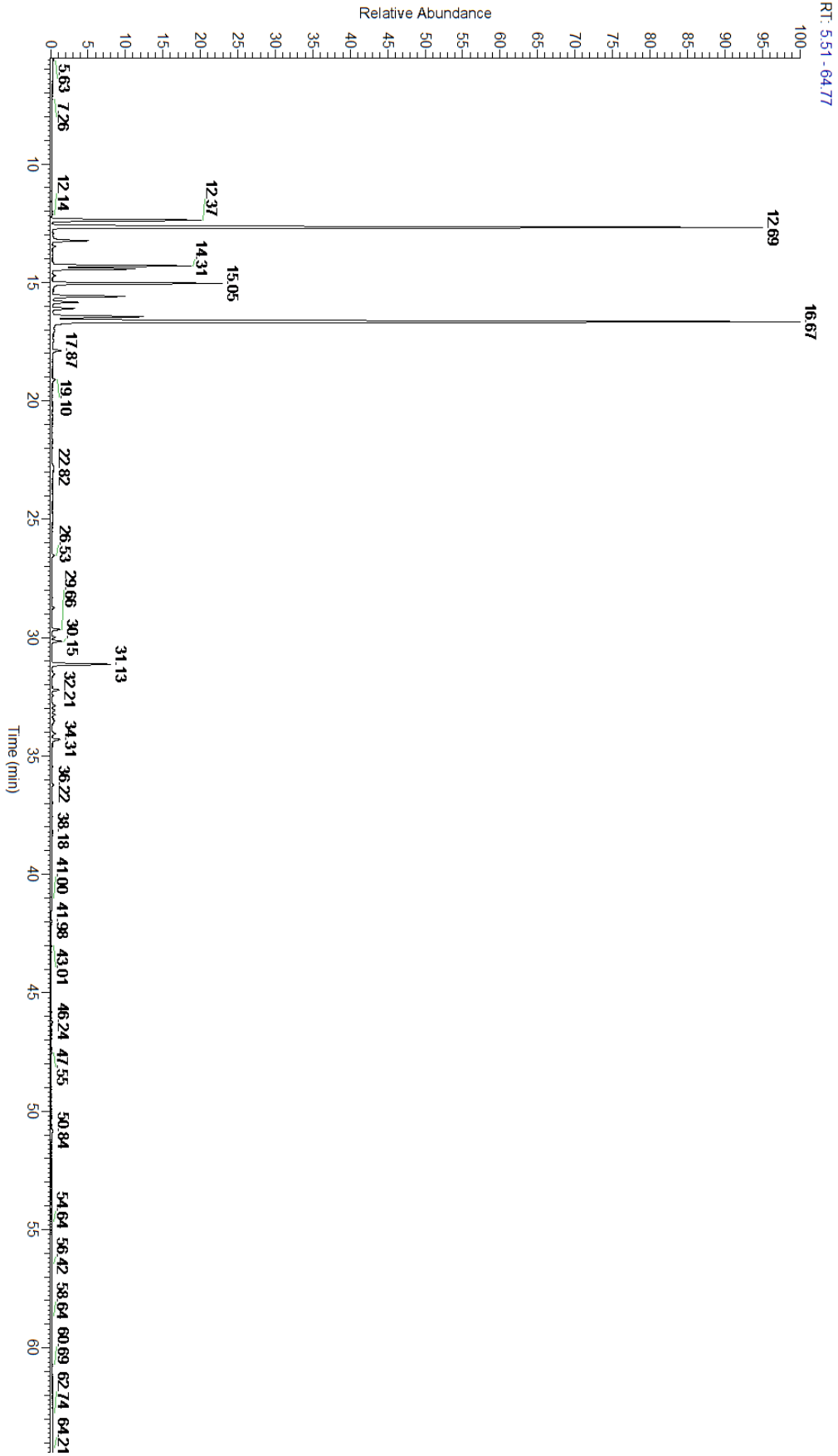
Main Compounds	Percentages
Limonene (Co-Eluting)	33.39%
alpha-Pinene	29.67%
alpha-Thujene	6.35%
Myrcene	6.21%
Sabinene	5.22%
para-Cymene	3.93%
beta-Pinene	3.07%
alpha-Phellandrene	2.90%
beta-Caryophyllene	2.33%
Camphene	1.44%
delta-3-Carene	0.95%
alpha-Terpinene	0.84%
gamma-Terpinene	0.37%

Monoterpenes	Sesquiterpenes	Monoterpenols	Sesquiterpenols	Ketones
94.86%	4.59%	0.10%	0.00%	0.00%
Esters	Ethers	Aldehydes	Phenols	Other
0.08%	0.06%	0.00%	0.00%	0.31%



- Monoterpenes ■ Sesquiterpenes ■ Monoterpenols
- Sesquiterpenols ■ Ketones ■ Esters
- Ethers ■ Phenols ■ Other

ESSENTIAL VALIDATION SERVICES | 747 SW 2ND AVE GAINESVILLE, FLORIDA 32601 | 317-361-5044



ESSENTIAL VALIDATION SERVICES | 747 SW 2ND AVE GAINESVILLE, FLORIDA 32601 | 317-361-5044



ESSENTIAL VALIDATION SERVICES | 747 SW 2ND AVE GAINESVILLE, FLORIDA 32601 | 317-361-5044

Total Percentage		99.76%			
Peak Number	RT	Area %	Compound Name	RI	Chemical Family
1	12.14	0.03%	Tricyclene	923.00	Monoterpene
2	12.37	6.35%	alpha-Thujene	927.80	Monoterpene
3	12.69	29.67%	alpha-Pinene	936.10	Monoterpene
4	13.10	0.08%	alpha-Fenchene	946.00	Monoterpene
5	13.24	1.44%	Camphene	950.30	Monoterpene
6	13.48	0.12%	Thuja-2,4(10)-diene	953.00	Monoterpene
7	14.31	5.22%	Sabinene	973.00	Monoterpene
8	14.43	3.07%	beta-Pinene	974.00	Monoterpene
9	14.71	0.12%	trans-Isolimonene	980.50	Monoterpene
10	15.05	6.21%	Myrcene	989.20	Monoterpene
11	15.60	2.90%	alpha-Phellandrene	1002.00	Monoterpene
12	15.84	0.95%	delta-3-Carene	1008.00	Monoterpene
13	16.11	0.84%	alpha-Terpinene	1014.00	Monoterpene
14	16.45	3.93%	para-Cymene	1024.30	Monoterpene
15	16.67	33.39%	Limonene	1029.50	Monoterpene
16	16.68	Co-Eluting	1,8-Cineole	1031.80	Monoterpene Ether
17	16.68	Co-Eluting	beta-Phellandrene	1030.00	Monoterpene
18	17.03	0.02%	(Z)-beta-Ocimene	1037.80	Monoterpene
19	17.49	0.01%	(E)-beta-Ocimene	1047.70	Monoterpene
20	17.87	0.37%	gamma-Terpinene	1054.00	Monoterpene
21	19.10	0.14%	Terpinolene	1092.10	Monoterpene
22	22.77	0.03%	Terpinen-4-ol	1180.57	Monoterpenol
23	22.82	0.06%	para-Cymen-8-ol	1185.25	Monoterpenol
24	23.04	0.01%	alpha-Terpineol	1191.71	Monoterpenol
25	26.53	0.08%	Bornyl acetate	1288.29	Monoterpene Ester
26	28.73	0.06%	alpha-Cubebene	1355.71	Sesquiterpene
27	29.66	0.30%	alpha-Copaene	1379.00	Sesquiterpene
28	29.97	0.10%	beta-Bourbonene	1388.70	Sesquiterpene
29	30.15	0.36%	beta-Elemene	1389.20	Sesquiterpene
30	31.13	2.33%	beta-Caryophyllene	1427.14	Sesquiterpene
31	31.54	0.12%	trans-alpha-Bergamotene	1435.00	Sesquiterpene
32	32.09	0.01%	Aromadendrene	1449.80	Sesquiterpene
33	32.21	0.26%	alpha-Humulene	1461.43	Sesquiterpene
34	32.45	0.04%	allo-Aromadendrene	1471.00	Sesquiterpene
35	32.88	0.12%	gamma-Muurolene	1478.86	Sesquiterpene
36	33.07	0.10%	Germacrene D	1484.71	Sesquiterpene
37	33.26	0.11%	beta-Selinene	1487.57	Sesquiterpene
38	33.43	0.02%	alpha-Selinene	1492.50	Sesquiterpene
39	33.52	0.12%	Viridiflorene	1494.14	Sesquiterpene
40	33.60	0.05%	alpha-Muurolene	1500.25	Sesquiterpene
41	34.06	0.14%	gamma-Cadinene	1515.29	Sesquiterpene
42	34.31	0.35%	delta-Cadinene	1524.14	Sesquiterpene
43	36.22	0.06%	Caryophyllene oxide	1594.86	Sesquiterpene Ether

