



## *Essential Validation Services*



## Sample:

---

Client: | Nature's Fusions  
Sample: | Lavender (Lavandula angustifolia)  
Batch # | NF-LAVF-18-A  
CAS Number | 8000-28-0  
Type: | Essential Oil

---

## Conclusion:

- No adulterants, diluents, or contaminants were detected via this method.
- This oil meets the expected profile for genuine essential oil of Lavender (Lavandula angustifolia).



X

A handwritten signature in black ink, appearing to read "Adam Christen".

Validated By:

Essential Validation Services

747 SW 2nd Ave, Gainesville, FL 32601

Phone: 317-361-5044 E-mail: [Adam@essentialvalidationservices.com](mailto:Adam@essentialvalidationservices.com)

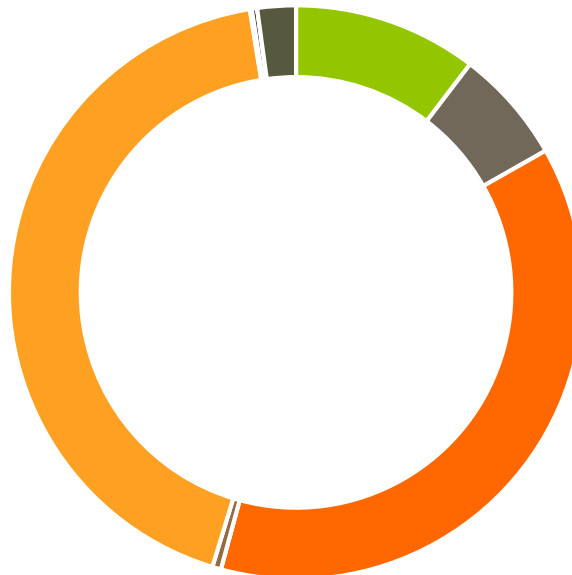
## Summary of Analyses

---

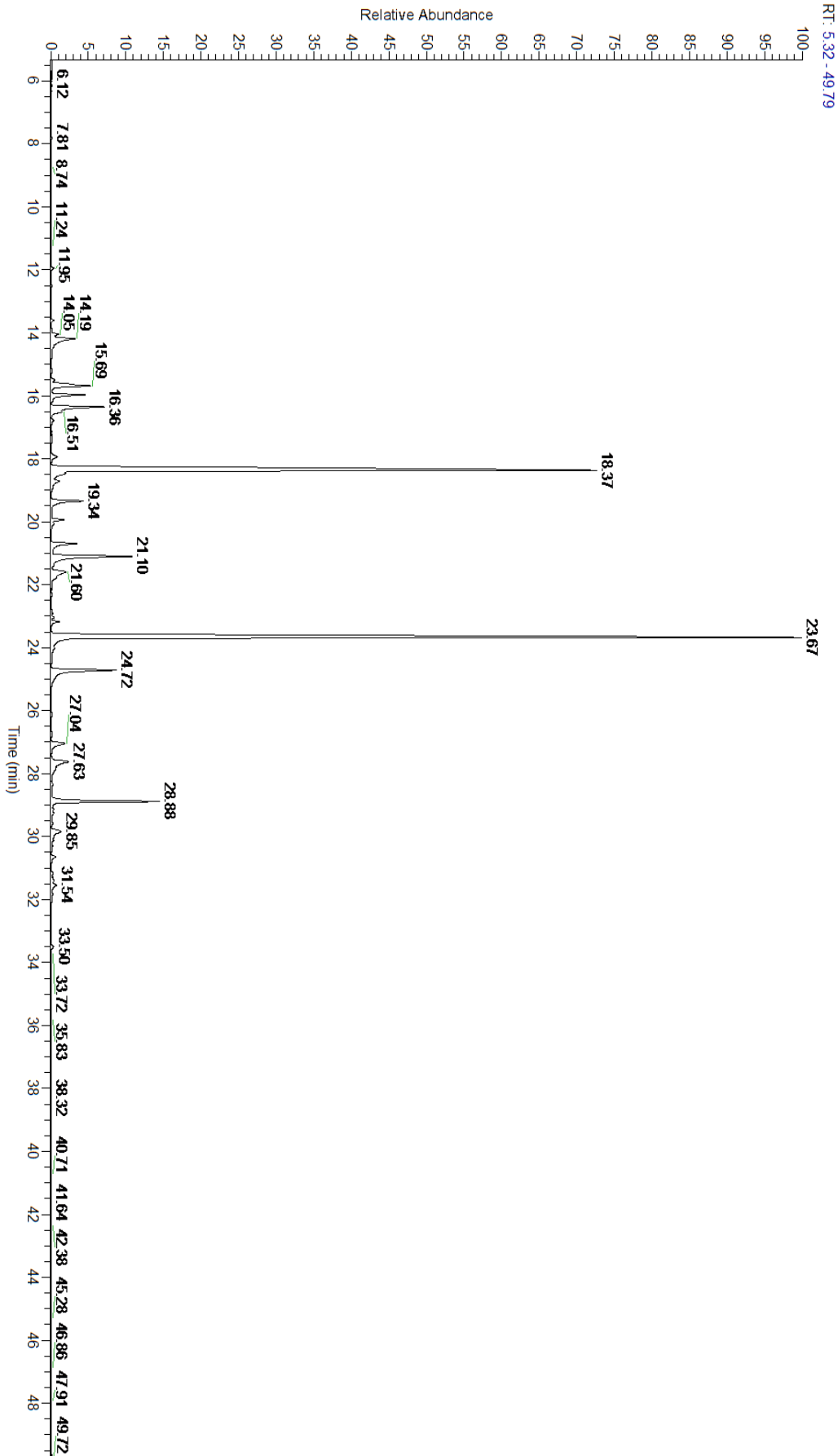
A fresh sample of Lavender (Lavandula angustifolia) Essential Oil (10 uL in .5to.5 mL Hexane + ETOH) was prepared and analyzed via split injection GC/EI-MS.

Main Compounds	Percentages
Linalyl acetate	35.73%
Linalool	30.65%
beta-Caryophyllene	4.33%
Terpinen-4-ol	4.13%
Lavandulyl acetate	3.32%
(E)-beta-Ocimene	2.61%
Limonene (Co-Eluting)	2.16%
Myrcene	1.62%
Alloocimene	1.57%
(Z)-beta-Ocimene	1.47%
Geranyl acetate	1.41%
Borneol (Co-Eluting)	1.32%
alpha-Terpineol	1.10%

Monoterpenes	Sesquiterpenes	Monoterpenols	Sesquiterpenols	Ketones
10.37%	6.41%	37.44%	0.00%	0.49%
Esters	Ethers	Aldehydes	Phenols	Other
42.71%	0.11%	0.30%	0.00%	2.17%



- Monoterpenes   ■ Sesquiterpenes   ■ Monoterpenols
- Sesquiterpenols   ■ Ketones   ■ Esters
- Ethers   ■ Phenols   ■ Other



Total Percentage		97.96%			
Peak Number	RT	Area %	Compound Name	RI	Chemical Family
1	11.95	0.11%	alpha-Pinene	936.10	Monoterpene
2	12.52	0.04%	Camphene	950.30	Monoterpene
3	13.60	0.09%	beta-Pinene	974.00	Monoterpene
4	13.90	0.02%	Octan-3-one	981.00	Aliphatic Ketone
5	14.19	1.62%	Myrcene	989.20	Monoterpene
6	14.39	0.13%	3-Octanol	992.00	Aliphatic Alcohol
7	15.19	0.02%	alpha-Terpinene	1014.00	Monoterpene
8	15.49	0.15%	para-Cymene	1024.30	Monoterpene
9	15.69	2.16%	Limonene	1029.50	Monoterpene
10	15.69	Co-Eluting	beta-Phellandrene	1030.00	Monoterpene
11	15.69	Co-Eluting	1,8-Cineole	1031.80	Monoterpene Ether
12	15.97	1.47%	(Z)-beta-Ocimene	1037.80	Monoterpene
13	16.36	2.61%	(E)-beta-Ocimene	1047.70	Monoterpene
14	16.78	0.16%	gamma-Terpinene	1054.00	Monoterpene
15	17.33	0.04%	cis-Linalool oxide (5) (furanoid)	1075.10	Monoterpenol
16	17.94	0.37%	Terpinolene	1092.10	Monoterpene
17	18.37	30.65%	Linalool	1099.00	Monoterpenol
18	18.51	1.00%	1-Octenyl-3 acetate	1107.00	Monoterpene Ester
19	19.34	1.57%	Alloocimene	1129.90	Monoterpene
20	19.93	0.47%	Camphor	1147.55	Monoterpene Ketone
21	20.06	0.14%	Camphene hydrate	1151.00	Monoterpenol
22	20.70	1.32%	Borneol	1168.71	Monoterpenol
23	20.70	Co-Eluting	Lavandulol	1161.50	Monoterpenol
24	21.10	4.13%	Terpinen-4-ol	1180.57	Monoterpenol
25	21.60	1.10%	alpha-Terpineol	1191.71	Monoterpenol
26	22.90	0.06%	Nerol	1230.67	Monoterpenol
27	23.05	0.10%	Hexyl isovalerate	1242.00	Monoterpene Ester
28	23.18	0.30%	Cuminal	1243.00	Monoterpene Aldehyde
29	23.67	35.73%	Linalyl acetate	1263.80	Monoterpene Ester
30	24.72	3.32%	Lavandulyl acetate	1285.00	Monoterpene Ester
31	26.10	0.07%	Hexyl tiglate	1331.00	Monoterpene Ester
32	27.04	0.90%	Neryl acetate	1362.90	Monoterpene Ester
33	27.63	1.41%	Geranyl acetate	1379.20	Monoterpene Ester
34	27.83	0.03%	beta-Bourbonene	1388.70	Sesquiterpene
35	28.34	0.05%	Sesquithujene	1405.00	Sesquiterpene
36	28.88	4.33%	beta-Caryophyllene	1427.14	Sesquiterpene
37	29.14	0.08%	trans-alpha-Bergamotene	1435.00	Sesquiterpene
38	29.24	0.11%	beta-Copaene	1445.00	Sesquiterpene
39	29.48	0.01%	Aromadendrene	1449.80	Sesquiterpene
40	29.58	0.05%	(E)-beta-Farnesene	1456.29	Sesquiterpene
41	29.85	0.84%	alpha-Humulene	1461.43	Sesquiterpene
42	30.12	0.11%	beta-Santalene	1464.00	Sesquiterpene
43	30.31	0.04%	gamma-Murolene	1478.86	Sesquiterpene

