



WHY YOU NEED A FABRIC CUTTER: a better way to cut™

Turn your patterns into quilts faster and more accurately with the AccuQuilt GO!® fabric cutting systems. With over 200 piecing and appliqué shapes, a GO! Fabric Cutter is a great value and gives you the confidence to make projects you never would have attempted.

MEET THE GO! CUTTERS:

- 90% faster than rotary cutting
- Reduces fabric waste
- Accurately cuts up to 6 layers of fabric at a time
- Minimizes hand, arm and back strain

[Why you need a fabric cutter >](#)



GO! FABRIC CUTTER

GO! BABY FABRIC CUTTER

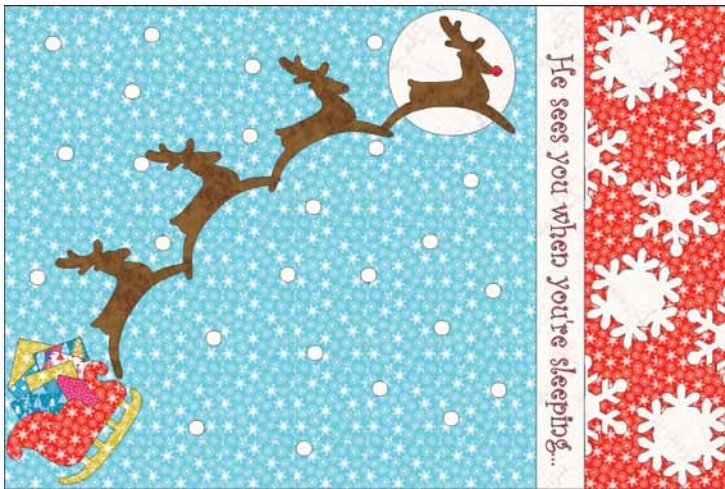
GO! BIG ELECTRIC FABRIC CUTTER

[Choose which fabric cutter is right for you >](#)

free
pattern

GO! holiday PILLOWCASE

finished size 20" x 30"



Fabric provided by
Michael Miller Fabrics

GO!® DIES USED

- GO! Sleigh & Snowflakes (55322)
- GO! Circle-2", 3", 5" (55012)
- GO! Holiday Medley (55043)
- GO! Square-2" (55022)
- GO! Strip Cutter-2½" (55014 or 55017)
- GO! Strip Cutter-6½" (55086)

FABRIC REQUIREMENTS

- Fabric 1—¾ yard
- Fabric 2—½ yard (also for appliqué)
- Fabric 3—⅝ yard (also for appliqué)
- Fabric 4—¼ yard or fat quarter
- Appliqué fabrics—scraps or fat quarters
- Fusible web product—1 yard

Optional: Curlz MT 1½" font machine embroidery alphabet

CUTTING DIRECTIONS

Apply fusible web to the wrong side of selected fabrics for appliqué following manufacturer's instructions before cutting appliqué shapes.

Fabric 1:

- Cut 1—22½" x 40½" rectangle

Fabric 2:

Note: Embroider optional lettering on fabric before cutting strips—see Sewing Directions.

- Cut 2—2½" x 40½" rectangles
- Cut 1—5" circle
- Cut 3—large snowflakes
- Cut 5—small snowflakes
- Cut 25—½" circles for snow

Fabric 3:

- Cut 2—6½" x 40½" rectangles
- Cut 1—sleigh facing right

Fabric 4:

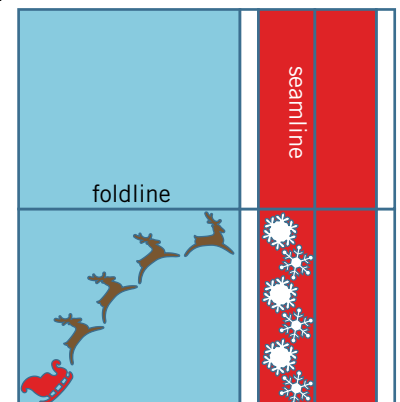
- Cut 4—reindeer facing right

Appliqué Fabrics:

- Cut 7—2" squares from assorted holiday prints
- Cut 1—sleigh facing right from gold fabric for runner; trim off most of sleigh leaving about ¼" of sleigh attached to runner so red sleigh can overlap top of runner appliqué
- Cut 1—small snowflake from red scrap fabric; trim one round end for lead reindeer nose

SEWING DIRECTIONS

1. Remove paper backing from appliqué shapes.
2. Fold Fabric #1 rectangle in half so it measures 20¼" x 22½". Press crease.
3. Lay out shapes on Fabric #1 folded rectangle following diagram. Scatter snow circles randomly.
4. Position sleigh overlapping top of runner shape.
5. Position seven 2" squares under top edge of sleigh shape.



SEWING DIRECTIONS *cont.*

6. Fuse shapes in place following manufacturer's instructions.
7. Open rectangle and appliqué edges of shapes by hand or machine.
8. *Optional: Machine embroider "He sees you when you're sleeping..." on white Fabric #2 with red thread using Curlz MT 1½" font embroidery alphabet. Lettering should measure less than 19". Cut strip into one 2½" x 40½" rectangle positioning lettering as shown.*
9. Fold one Fabric #3 rectangle in half so it measures 20¼" x 6½". Press crease.
10. Lay out snowflake shapes on Fabric #3 folded rectangle following diagram.
11. Fuse shapes in place following manufacturer's instructions.
12. Open rectangle and appliqué edges of shapes by hand or machine.
13. Pin and sew one Fabric #2 plain or embroidered rectangle between the Fabric #1 appliqué rectangle and the Fabric #3 appliqué rectangle along long edges. Press seams toward the Fabric #2 rectangle.
14. Pin and sew one plain Fabric #2, 2½" x 40½" rectangle to one non-appliquéd Fabric #3, 6½" x 40½" rectangle along the long edges to form cuff. Press seams toward Fabric #3 rectangle.
15. Press under ¼" on the long edge of Fabric #2 rectangle.
16. Pin and sew the combined rectangles together along the Fabric #3 edges as shown. Press seam open.
17. Fold pillowcase rectangle right sides together along foldline.
18. Pin and sew along short end of Fabric #1 and along long edge of pieced pillowcase rectangle including opened out ¼" turned edge of Fabric #2. Reinforce stitching at both ends of stitching line.
19. Overcast raw edge with zigzag or serger as desired.
20. Fold Fabric #2/#3 cuff along seamline so ¼" turned edge covers seam allowance between Fabric #1 and #2 rectangles on wrong side of pillowcase.
21. Pin and hand sew in place to form finished cuff shown by small dotted line.
22. Turn pillowcase right sides out and press.

