

Powr-Flite

COMMERCIAL FLOOR CARE EQUIPMENT

OPERATOR'S MANUAL

PF58 Wet/Dry Vacuum



**WARNING: OPERATOR MUST READ AND UNDERSTAND THIS MANUAL
COMPLETELY BEFORE OPERATING THIS EQUIPMENT.**

SAVE THESE INSTRUCTIONS FOR FUTURE REFERENCE

*When using a wet/dry vacuum, basic precautions should be followed.

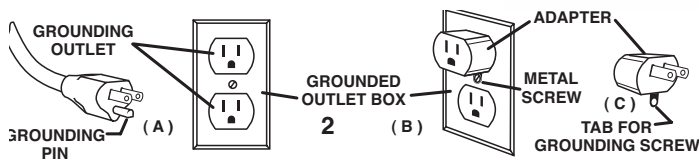
*Read all instructions before using your vacuum.

IMPORTANT SAFETY ADVICE

When using electrical equipment basic safety precautions should be followed including the following:

You must have training in the operation of this machine before using it. Read all instructions carefully before use.

- Keep children and unauthorized persons away from the machine when in use.
- Do not leave the machine plugged in when not in use.
- Switch the machine off before removing the plug from the outlet.
- When unplugging, pull the plug, not the cord.
- The machine must be unplugged prior to cleaning or servicing the machine
- Keep the power cord clear of moving parts.
- Do not run the machine over the power cord.
- Do not operate the machine with a damaged power cord or plug, or if the machine malfunctions or is damaged in any way.
- Do not use where hazardous dust is present.
- Do not use in an explosive atmosphere.
- Do not use where flammable liquids or gasses are present.
- Do not use or pick up flammable chemicals or liquids with this machine.
- Take care when using the machine near the top of stairs to avoid overbalancing.
- Maintenance and repair must be done by authorized personnel only.
- Wear suitable footwear to avoid slipping.
- Do not operate this machine in bare feet or with open-toed shoes or sandals.
- Do not smoke when using the machine.
- CAUTION:-This machine is for indoor use only and should not be used or stored outdoors or in wet conditions.



DRY OPERATION OF VACUUM

The wet/dry vacuums are equipped with bypass motors. Install the cloth filter, place the motor head on the canister and snap down the hold-down clamps.

WET OPERATION OF VACUUM

The wet/dry vacuums are equipped with a bypass motor so that the working vacuum is separated from the cooling air flow. To pick up water, the dry filters must be removed. The safety float assembly, located in the vacuum head, stops the vacuum motor when water in the tank exceeds the safety level.

After picking up aggressive or caustic liquids (floor stripper, oils, lubricants, degreasers, etc.), thoroughly rinse the tank, hose, wand and tools. Failure to properly clean these items will void the manufacturer's warranty.

WAND AND ATTACHMENT INSTRUCTIONS

To assemble the two piece wand:

1. Match the alignment ridges of the upper and lower wand sections.
2. Push the upper wand into the lower wand.

To assemble tools:

1. Slide the swivel cuff of the tool onto the tapered lower wand.
2. Turn swivel cuff 1/4 turn to tighten.



DRAINING

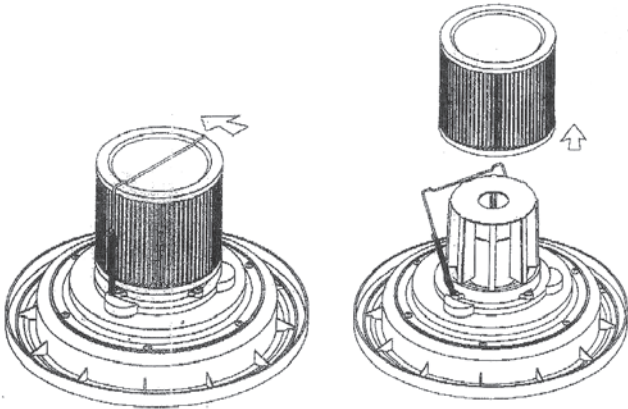
When the tank is full.

1. Release drain hose from hose clamp.
2. Remove plug from hose end to start draining process.
3. When draining is complete, replace hose plug and snap hose back into clips on the rear of the tank.

NOTE: When the water level in the tank exceeds the safety level, the safety device will automatically block the inlet, and the motor tone will change, but power will remain ON. The power must be turned OFF before emptying the tank.

REMOVE THE PAPER FILTER

The paper filter must be removed for wet recovery.
Push the metal ring counterclockwise to release the filter.
Remove the paper filter.



HOSE ATTACHMENT INSTRUCTIONS

The hose and swivel connector are pre-assembled at the factory.
To attach the swivel connector to the intake fitting of the canister:

1. Push the grooved cuff straight into the intake fitting.
2. To remove, press the release button on top of the intake fitting while pulling the grooved cuff out.

MAINTENANCE AND SERVICING

1. To dismantle, unclip both latches and remove top housing and filter with frame.
2. Wash the filter with water and allow it to dry.
3. Replace the filter and top housing and fasten the latches.

NOTE: This cleaner is designed with a powerful suction. Do not be alarmed if the motor noise increases when performing tougher cleaning work.

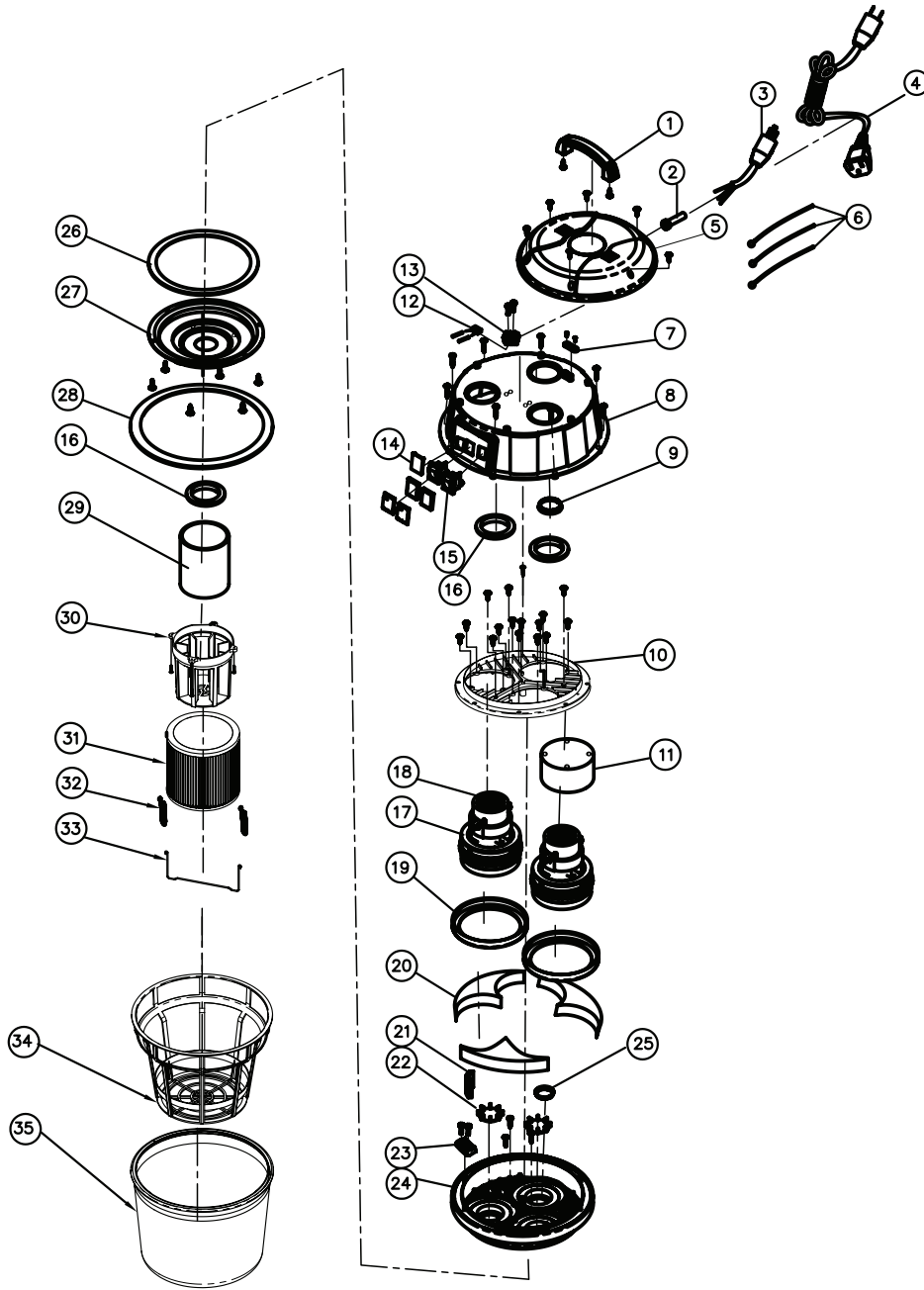


Model PF58 drain hose.



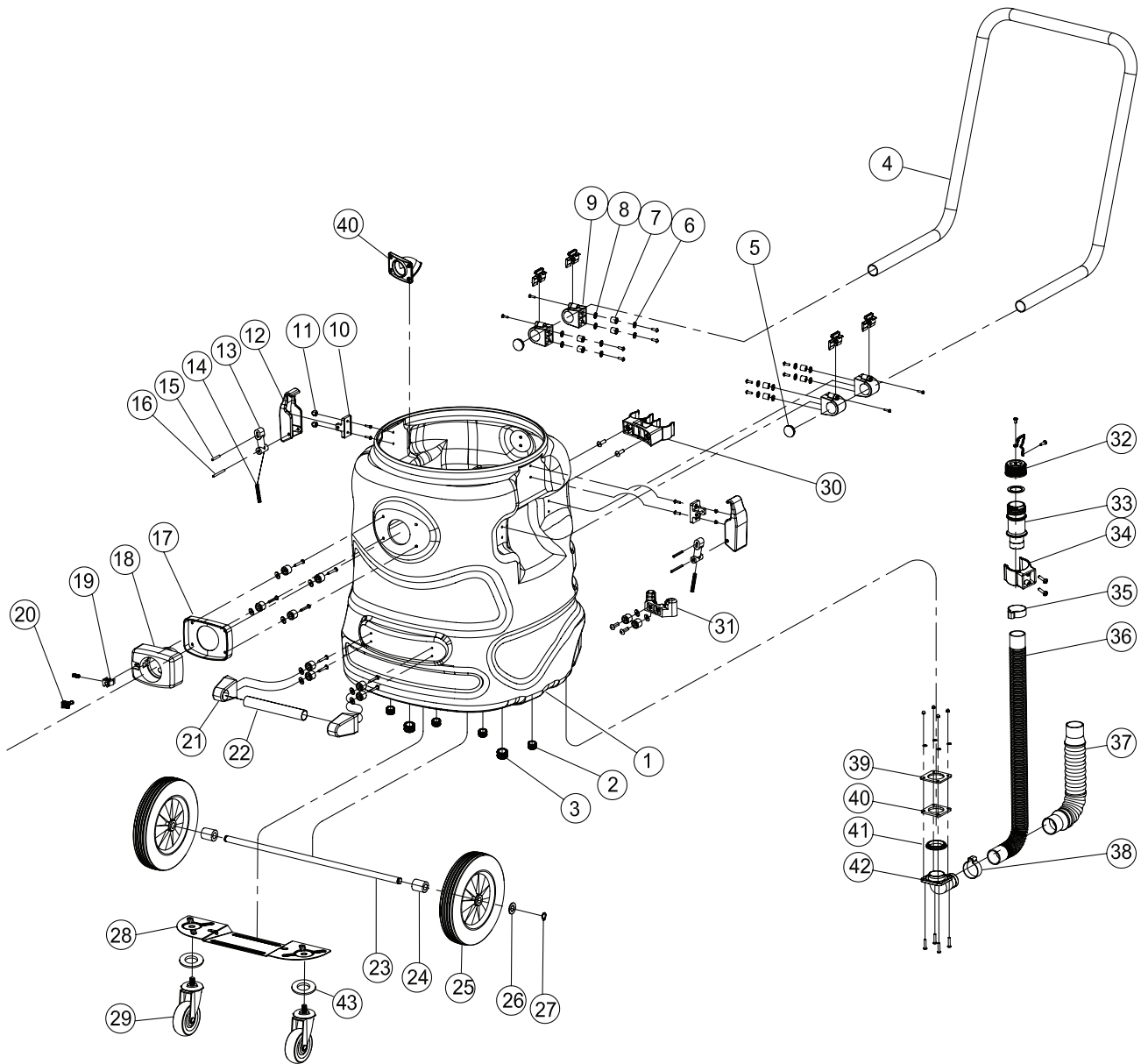
Model PF58 shown with optional front mounted squeegee.

Model PF58 Parts



ref #	item #	description	ref #	item #	description
1	WD20A	HANDLE	19	WD68	GASKET
2	WD34	STRAIN RELIEF	20	WD70	SPONGE
3	WD246	POWER CORD	21	WD69	SPONGE
4	WD247	EXTENSION CORD	22	WD85	BLOCKER
5	WD65	TOP COVER	23	WD166	PLATE B
6	WD15W	MOTOR CONNECTION WIRE SET	24	WD87	MOTOR BASE
7	WD17	PLATE	25	WD252	BLOCKER
8	WD16	MIDDLE SEAT	26	WD201	GASKET
9	WD83	BLOCKER	27	WD10	BOTTOM BASE
10	WD14B	BASE	28	WD165	SEAL
11	WD248	BLOCKER	29	WD9	FLOAT
12	WD249	CAPACITOR	30	WD8	FLOAT FRAME
13	WD207	TERMINAL BLOCK	31	WD253	WASHABLE FILTER
14	WD250	COVER	32	WD37	SPRING
15	WD67	POWER SWITCH	33	WD35	HOOK
16	WD53	GASKET	34	WD7	FRAME
17	WD251	GASKET	35	WD3	FABRIC FILTER
18	WD15	MOTOR			

Model PF58 Parts

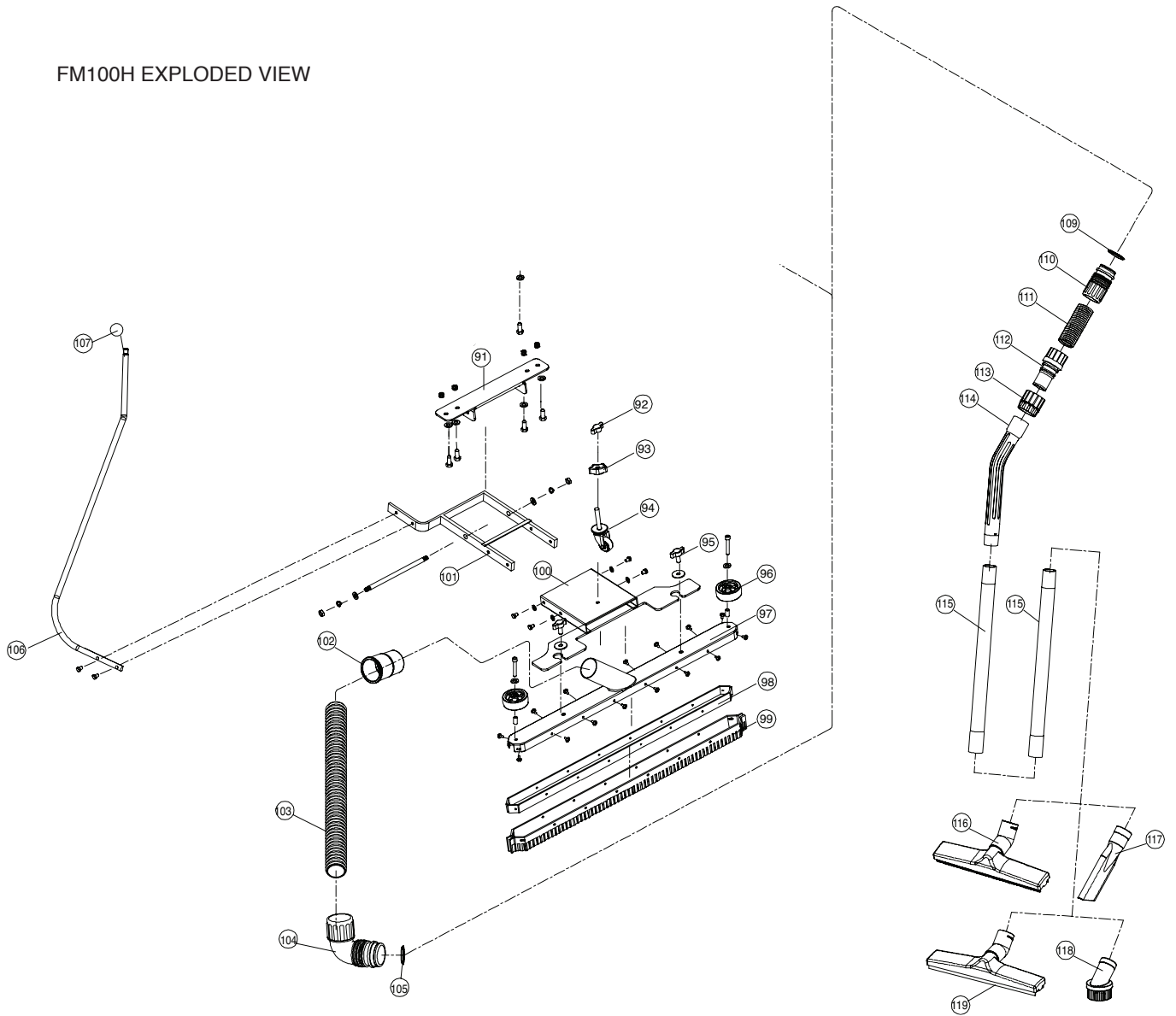


ref #	item #	description
1	WD219	TANK
2	WD220	NUT
3	WD221	NUT
4	WD132	HANDLE
5	WD133	COVER
6	WD222	WASHER
7	WD223	HOLDER
8	WD224	WASHER
9	WD121	HOLDER
10	WD128	CLIP BASE
11	WD44	NUT
12	WD63	CLIP
13	WD127	CLIP HOLDER
14	WD52	SPRING
15	WD129	PIN (SHORT)
16	WD131	PIN (LONG)
17	WD50	WASHER
18	WD45	SUCTION COUPLER
19	WD86	BUTTON FIXER
20	WD46	BUTTON
21	WD225	HOLDER

ref #	item #	description
22	WD226	HANDLE
23	WD227	AXEL
24	WD228	BUSHING
25	WD61M	REAR WHEEL
26	WD229	WASHER
27	WD230	C-RING
28	WD167	FRAME
29	WD231M	FRONT WHEEL
30	WD232	CLAMP
31	WD233	HOLDER
32	WD236	CAP
33	WD237	CONNECTOR B
34	WD146	HOOK
35	WD238	CLAMP
36	WD239	HOSE
37	WD240	PROTECTOR
38	WD241	CLAMP-2
39	WD242	SEAL HOLDER
40	WD188	INNER SEAL
41	WD243	OUTER SEAL
42	WD244	CONNECTOR A
43	WD256	CASTER WASHER

Model PF58 Parts

FM100H EXPLODED VIEW



ref #	item #	description
91	WD168	U-SHAFT
92	WD169	BUTTON
93	WD170	FIXED NUT
94	WD171	ADJUSTED WHEEL
95	WD172	BUTTON
96	WD173	WHEEL
97	WD174	SQUEEGEE BODY
98	WD175	BLADE BRACKET
99	WD176	BLADE
100	WD177	FIXED PLATE 2
101	WD179	PEDAL BRACKET
102	WD180	CONNECTOR
103	WD181	HOSE
104	WD182	BEND CONNECTOR
105	WD183	SEAL

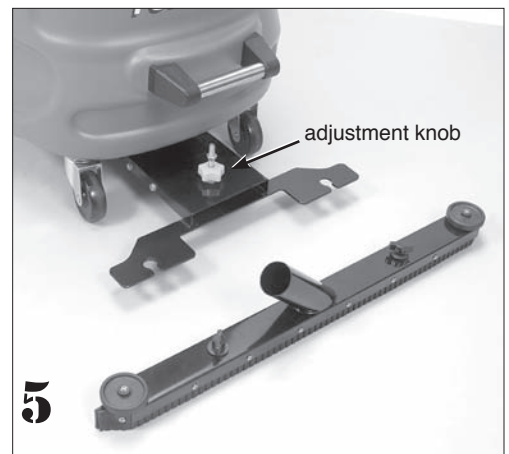
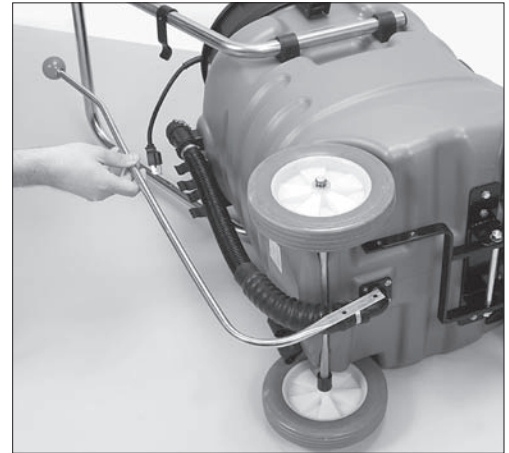
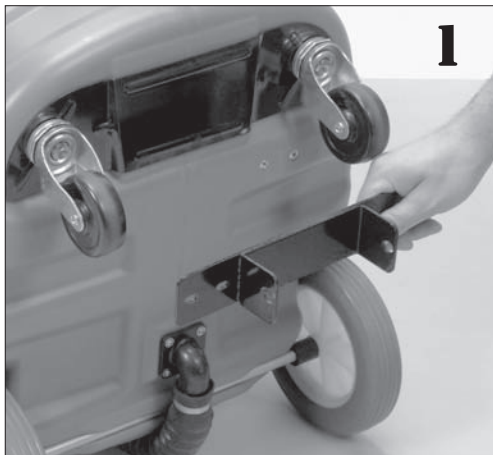
ref #	item #	description
106	WD184	ADJUSTER LEVER
107	WD186	ADJUSTER LEVER KNOB
109	WD191	GASKET
110	WD24	CONNECTOR
111	WD25	HOSE
112	WD26	CONNECTOR
113	WD27	FIXER
114	WD28	BEND CONNECTOR
115	WD29	EXTENSION WAND
116	WD112	BRUSH NOZZLE ASS'Y
117	WD32	CREVICE TOOL
118	WD33	ROUND BRUSH
119	WD30A	SQUEEGEE NOZZLE ASS'Y
	WD157	DRAIN HOSE ASS'Y
	FM100H	FRONT MOUNTED SQUEEGEE ASS'Y

Model PF58 Parts - Optional Squeegee Assembly

Installing Instructions - FM100H

FRONT MOUNT SQUEEGEE INSTRUCTIONS

1. Remove vacuum head and filters from the vacuum.
2. Install axle mounting plate to bottom of unit. *See fig 1*
3. Attach handle bracket to squeegee bracket.
4. Attach squeegee bracket to the axle bracket. *See fig 2*
5. Attach handle to handle bracket. *See fig 3*
6. Attach handle holder to machine handle. *See fig 4*
7. Attach squeegee to squeegee bracket. *See fig 5*
8. Turn adjustment knob as necessary. *See fig 5*



TROUBLE SHOOTING GUIDE

Loss of Suction

CAUSE:

- 1) Tank full.
- 2) Dry filter assembly clogged.
- 3) Clogged hose or wand.
- 4) Loose or broken fan.
- 5) Motor not working.
- 6) Float not functioning.
- 7) Seal worn.

SOLUTION:

- 1) Empty Tank
- 2) Clean cloth filter.
- 3) Remove obstruction.
- 5) Contact manufacturer or service center.
- 6) Contact manufacturer or service center.
- 7) Check to see if float moves freely or tank is full.
- 8) Replace seal.

Motor is not running

CAUSE:

- 1) Broken switch.
- 2) Defective power cord.
- 3) Defective motor.

SOLUTION:

- 1) Contact manufacturer or service center.
- 2) Contact manufacturer or service center.
- 3) Contact manufacturer or service center.

Dust blowing from unit when running

CAUSE:

- 1) Cloth filter dirty.
- 2) Cloth filter is torn.
- 3) Cloth filter is not installed.

SOLUTION:

- 1) Clean cloth filter.
- 2) Replace filter.
- 3) Install cloth filter, when vacuuming very fine dust.

Water blowing from unit when running

CAUSE:

- 1) Tank is full of liquid.
- 2) Sudsy or foamy liquid is being picked up.

SOLUTION:

- 1) Empty tank.
- 2) Add defoamer to tank.

The Powr-Flite Limited Warranty

The manufacturer warrants to the original purchaser that products manufactured are free from defects, provided such goods are installed, operated and maintained in accordance with written manuals or other instructions for a period of 1 year from date of purchase on workmanship, motor, and parts. In case you, as our customer, meet any trouble with your machine, contact a Powr-Flite representative, who will be happy to be of service to you and will take care of any warranty issues.

Powr-Flite
COMMERCIAL FLOOR CARE EQUIPMENT

3101 Wichita Court
Fort Worth, TX 76140
800.880.2913
www.Powr-Flite.com