

# DUURA

www.DUURA.com  
Sales@Duura.com • Techservice@Duura.com

Project Name: \_\_\_\_\_

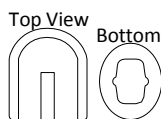
Location: \_\_\_\_\_

Item #: \_\_\_\_\_ Qty: \_\_\_\_\_

Model: \_\_\_\_\_

## 75lb SELF CONTAINED ICE MAKER (w/ Integrated Ice Bin)

Model:  DI75



**Bullet Shaped Cubes**  
Inches: 1.22 x 1.45 x .95  
mm: 31 x 37 x 24

Self contained ice maker. For freestanding or built in, undercounter applications. Can produce up to 88 pounds of ice per day (under the right conditions). Includes a self-contained 25 pound storage bin. Stainless steel construction provides durability to a unit that is low-maintenance and easy to clean. Front breathing design. Vertical evaporator and proven ice making technology assures years of reliable ice production.

### ICE PRODUCTION

Air Temp 70°F (21°C) Water Temp 50°F (10°C)  
Daily Ice Production: 88 lbs (40kg)

Air Temp 90°F (32°C) Water Temp 70°F (21°C)  
Daily Ice Production: 68 lbs (31kg)

Storage Bin holds 25lbs of ice with automatic overflow prevention  
Gravity Drain is required.

### OPERATING REQUIREMENTS

Ambient Temp Range 50° to 99°F (10° to 37°C)  
Water Temp Range 40° to 90°F (4° to 32°C)  
Water Usage 100lbs (45.4kg) of Ice 21 Gallons (79L)  
Water Supply Line Connection 3/8" FPT  
Water Pressure Range  
Min PSI 15 Max PSI 80 (above 80 requires a regulator)  
Min Bar 1.0 Max Bar 5.5  
Energy Consumption kWh/100 lb (45.4 kg) 90°F(32°C)/70°F(21°C)  
11.96 kWh/100 lb of ice made

### REFRIGERANT

• CFC & HCFC free R-134A

### ELECTRIC

120V/60Hz/1 Ph (NEMA 5-15P)



### FEATURES and CONSTRUCTION

- Exterior Material: Stainless Steel with Black Trim
- Air Cooled Compressor
- Programmable, solid state, digital electronic control system.
- Built-In Self Cleaning Mode
- Includes Scoop
- Includes Tubing for Supply and Drain Lines
- Includes NEMA 5-15 cord set for simple installation
- \* Water Filter Recommended



Intertek  
Certified to  
ANSI-NSF 7



LISTED  
Certified to  
ANSI UL 471



### DUURA WARRANTY (USA / CANADA)

One (1) year parts/labor  
One (1) year compressor (part only)  
Administered by DUURA  
24/7 tech support provided

Due to periodic changes in designs, methods, procedures, policies and regulations, the specifications contained in this sheet are subject to change without notice. While we exercise good faith efforts to provide information that is accurate, we are not responsible for errors or omissions in information provided or conclusions reached as a result of using the specifications.

By using the information provided, the user assumes all risks in connection with such use.

The built in performance enhancing functions ensure that given proper attention and preventative maintenance, each DUURA Product will deliver years of trouble free, reliable, low maintenance, efficient operation.

# DUURA

www.DUURA.com  
 Sales@Duura.com • Techservice@Duura.com

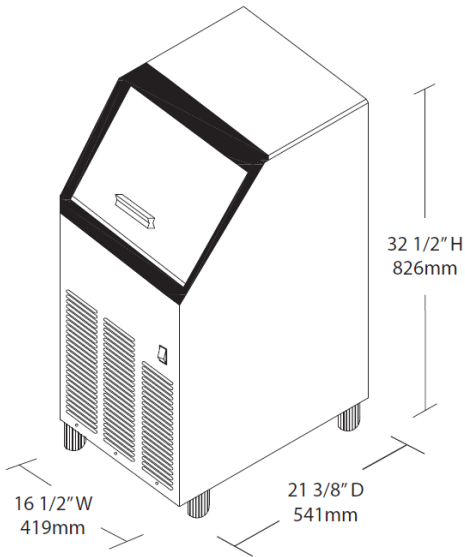
Project Name: \_\_\_\_\_

Location: \_\_\_\_\_

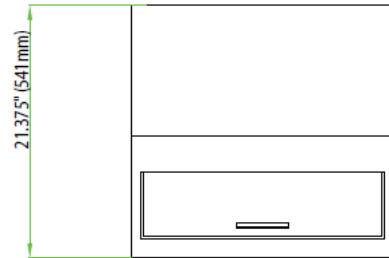
Item #: \_\_\_\_\_ Qty: \_\_\_\_\_

Model: \_\_\_\_\_

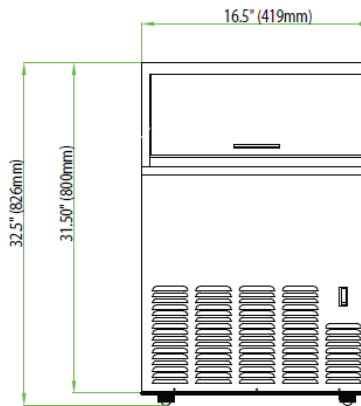
## 75lb SELF CONTAINED ICE MAKER (w/ Integrated Ice Bin)



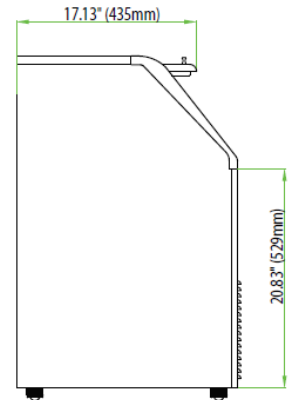
Top View



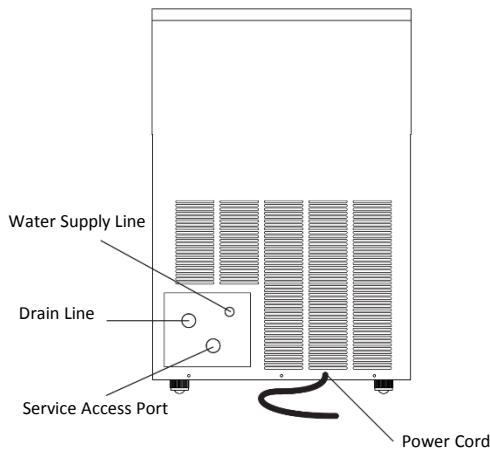
Front View



Side View



Back View



	<b>DI75</b>
<b>In: External Dimensions W x D X H</b>	16.5 x 21.375 x 32 .5
<b>mm: External Dimensions W x D X H</b>	419 x 541 x 826
<b>Electrical Amp Draw</b>	
<b>120V</b>	11.3 max (normal or nominal draw 6.4 amps)
<b>220V</b>	6.3 max (normal or nominal draw 3.5 amps)
<b>Unit Weight</b>	93 lb / 42kg
<b>Shipping Weight</b>	104 lb / 47 kg
<b>Finish</b>	Stainless Steel / Black Accent

Due to periodic changes in designs, methods, procedures, policies and regulations, the specifications contained in this sheet are subject to change without notice. While we exercise good faith efforts to provide information that is accurate, we are not responsible for errors or omissions in information provided or conclusions reached as a result of using the specifications. By using the information provided, the user assumes all risks in connection with such use.