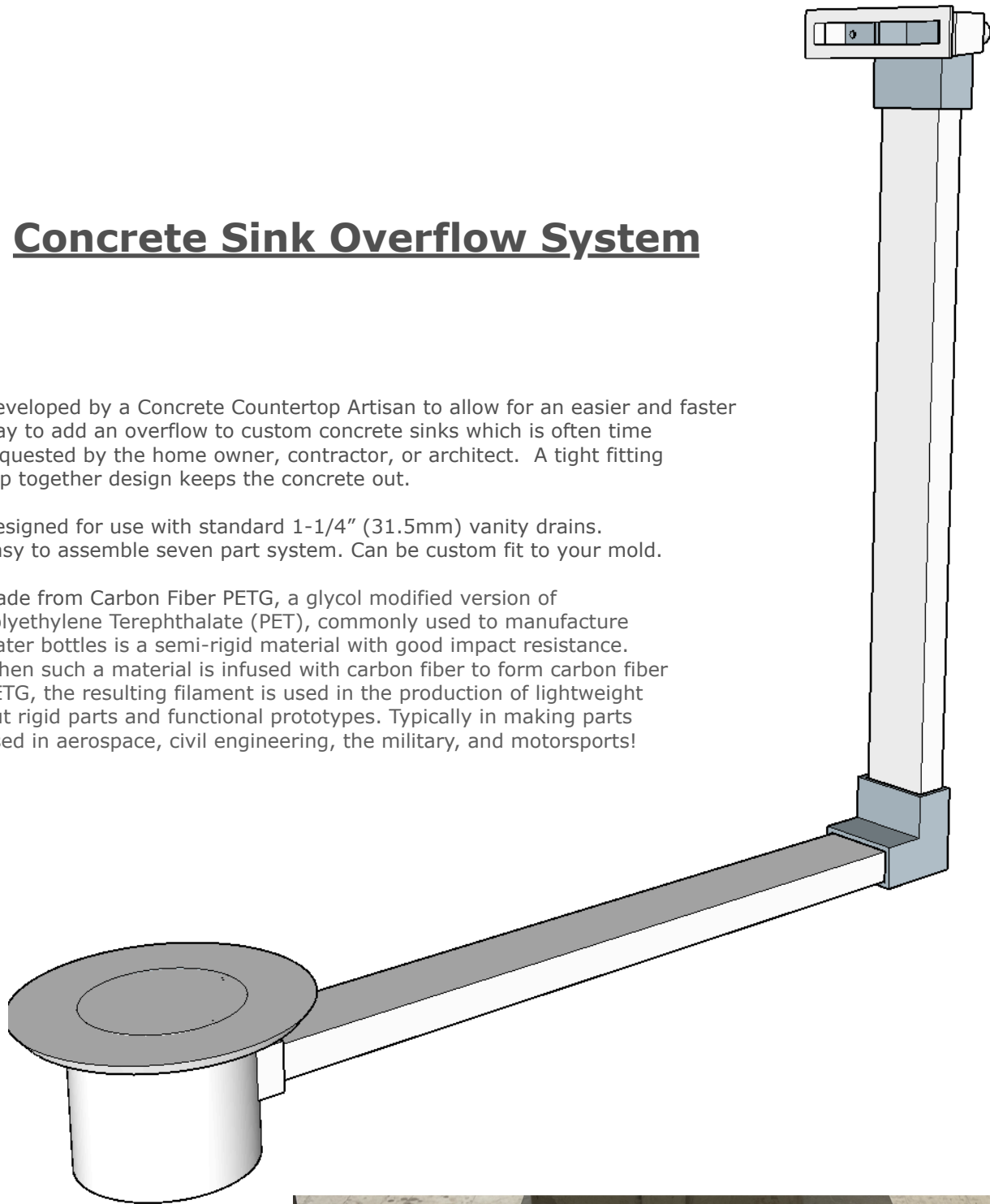


Concrete Sink Overflow System

Developed by a Concrete Countertop Artisan to allow for an easier and faster way to add an overflow to custom concrete sinks which is often time requested by the home owner, contractor, or architect. A tight fitting slip together design keeps the concrete out.

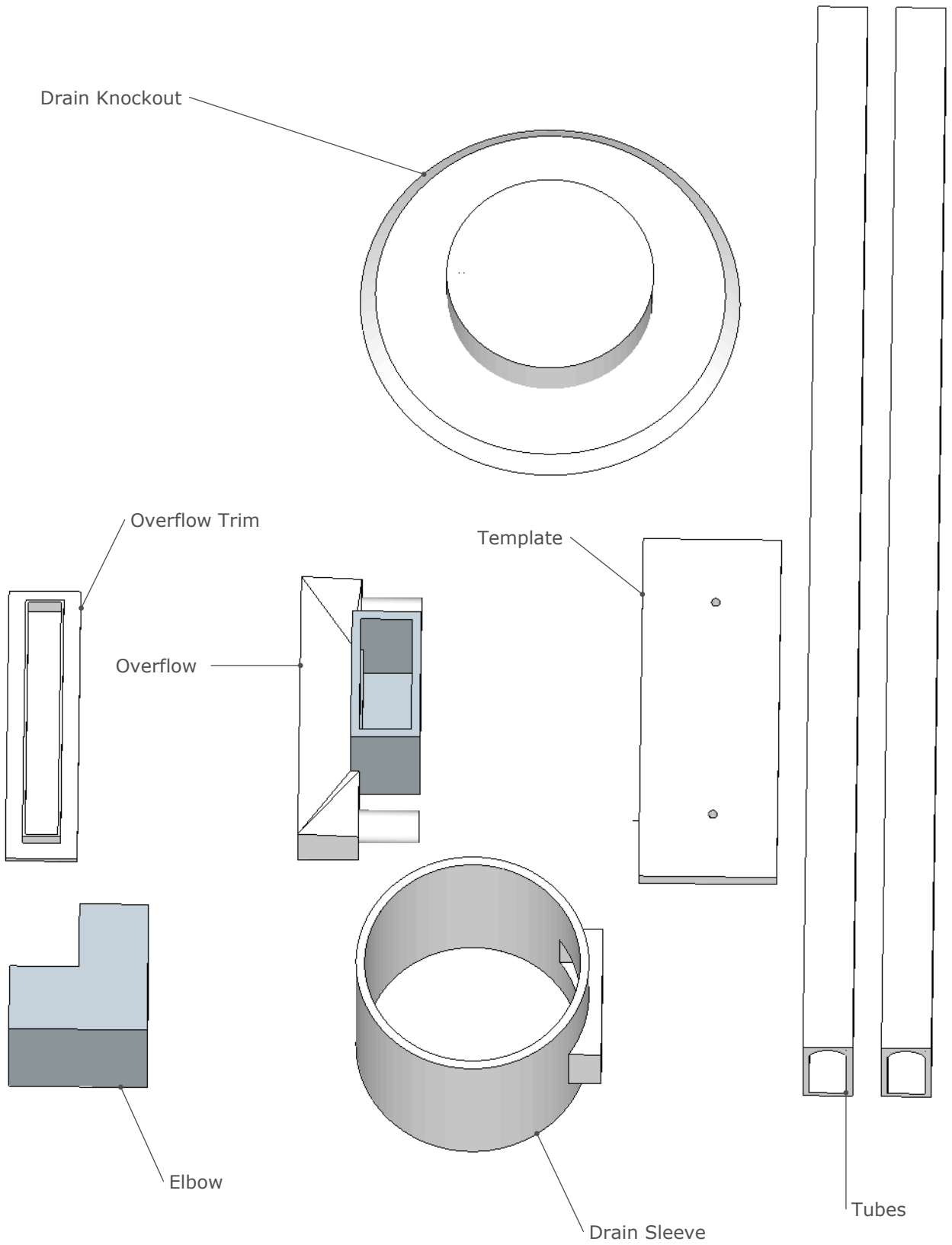
Designed for use with standard 1-1/4" (31.5mm) vanity drains. Easy to assemble seven part system. Can be custom fit to your mold.

Made from Carbon Fiber PETG, a glycol modified version of Polyethylene Terephthalate (PET), commonly used to manufacture water bottles is a semi-rigid material with good impact resistance. When such a material is infused with carbon fiber to form carbon fiber PETG, the resulting filament is used in the production of lightweight but rigid parts and functional prototypes. Typically in making parts used in aerospace, civil engineering, the military, and motorsports!



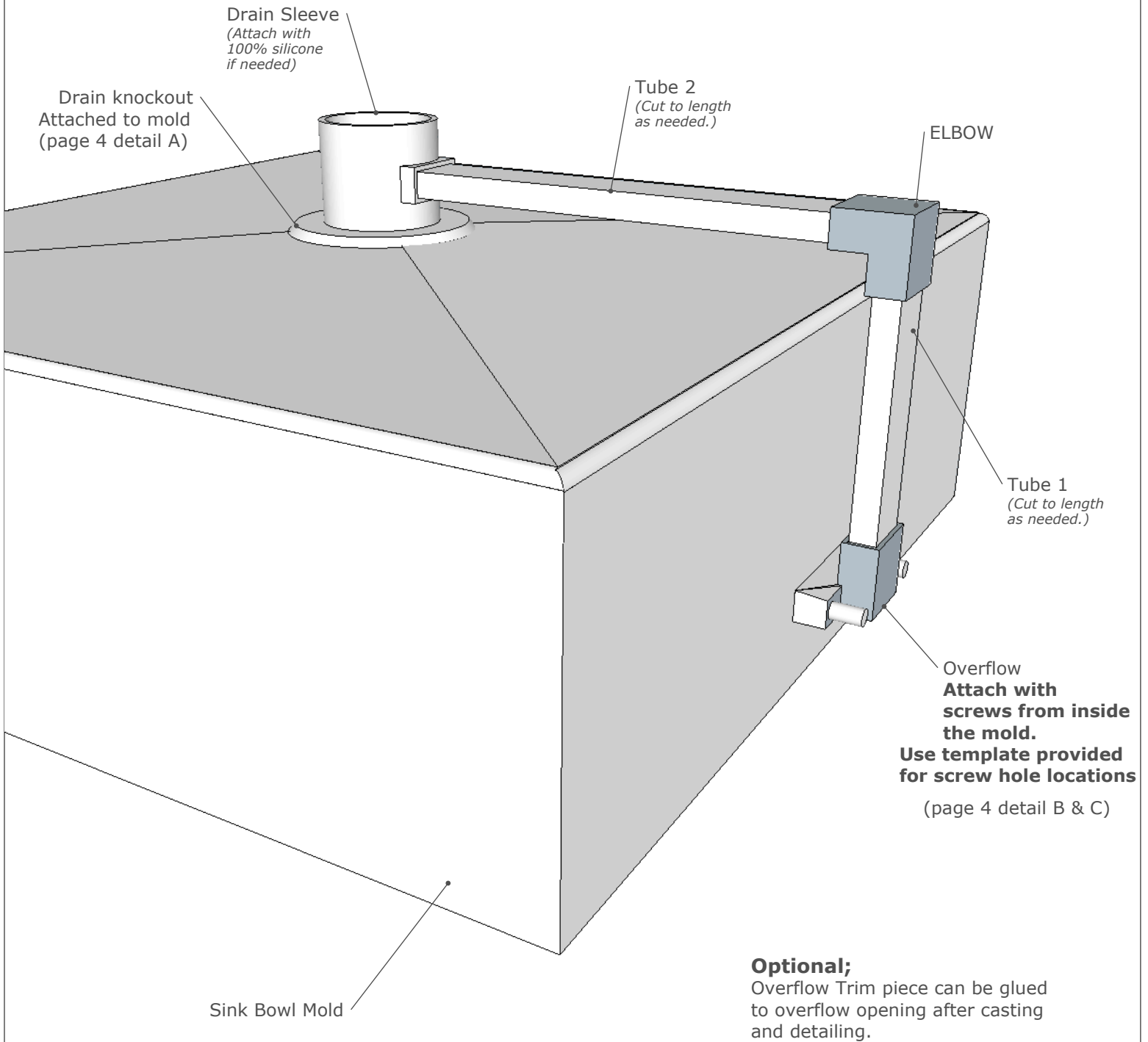
Support contact cccoverflowsprt@gmail.com

Overflow Kit Parts



Support contact ccoverflowspprt@gmail.com

Overflow Kit Attached to the Mold



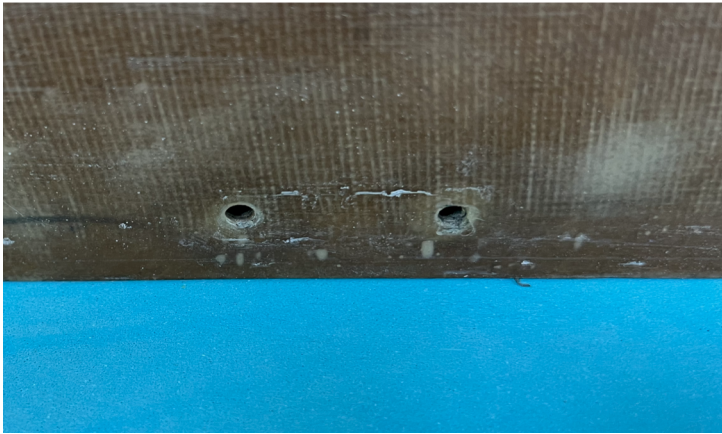
Support contact ccoverflowspprt@gmail.com

A



Drain Knockout attached to bowl mold.

B



Holes drilled through mold to attach the overflow. (use hole template provided)

C



Overflow system in place.

D



After casting (overflow trim not shown).

Support contact cccoverflowspprt@gmail.com