

Chillow

PACKAGE CONTENT

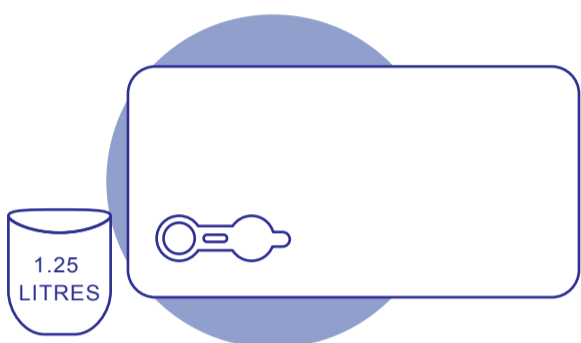
Chillow X 1



HOW TO USE

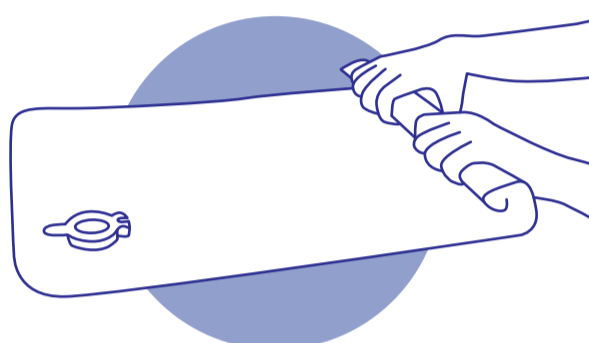
1 ADD WATER

UNROLL YOUR CHILLOW WITH THE VALVE SIDE UP ON A CLEAN, WATERPROOF SURFACE. REMOVE THE VALVE CAP AND POUR IN APPROXIMATELY 1.25 LITRES (~2.2 PINTS) OF WARM WATER USING A CALIBRATED MEASURING CONTAINER. IT'S OKAY TO HAVE A LITTLE SPILL. SNAP THE CAP BACK ON TIGHTLY.



2 REST FOR 3HRS

MAKE SURE THE CAP IS SECURELY FASTENED ON THE VALVE. SET THE CHILLOW FLAT FOR 3 HOURS. NEXT, FROM THE 'VALVELESS' END OF THE CHILLOW, ROLL IT TO FORCE ANY TRAPPED AIR TO THE VALVE END OF THE CHILLOW.



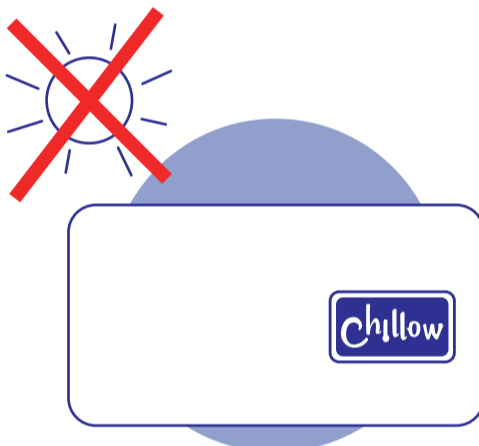
3 RELEASE AIR BUBBLE

HOLDING THE ROLLED CHILLOW IN PLACE, SLOWLY UNCAP THE VALVE TO RELEASE AIR BUBBLES. LIGHTLY SWEEP YOUR ARM ACROSS THE DEFLATING AIR POCKET TO FORCE OUT ALL REMAINING AIR. NEXT, RECAP THE VALVE TO CREATE A VACUUM SEAL. A LITTLE LEAKAGE IS NORMAL.



4 LET COOL

SET THE CHILLOW DOWN FOR IT TO FULLY COOL DOWN. AVOID DIRECT SUNLIGHT IN THIS PROCESS. THE CHILLOW SHOULD APPEAR WRINKLY AND VACUUM PACKED AS SHOWN ABOVE. OTHERWISE, REPEAT STEP 2 AND 3 UNTIL ALL AIR IS REMOVED. ALL WATER + NO AIR = COOL CHILLOW.



HYGIENE

EVERYONE'S SKIN IS DIFFERENT AND EXUDES A NUMBER OF TOXINS AND OILS ESPECIALLY AT NIGHT. DO NOT SHARE YOUR CHILLOW!

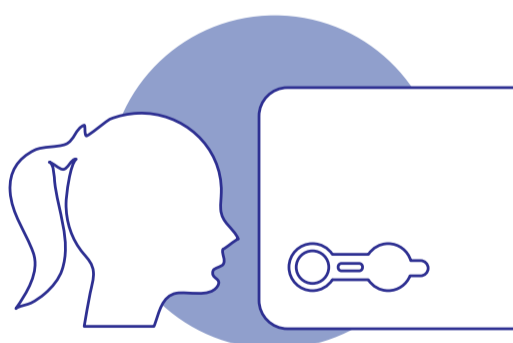
1 TO CLEAN

BUILD UP OF SKIN OILS CAN HARDEN THE SURFACE OF THE CHILLOW. TO CLEAN, ADD SOME MILD DISH SOAP ONTO A DAMP CLOTH. GENTLY WIPE IN CIRCLES AND THEN AIR DRY IT.



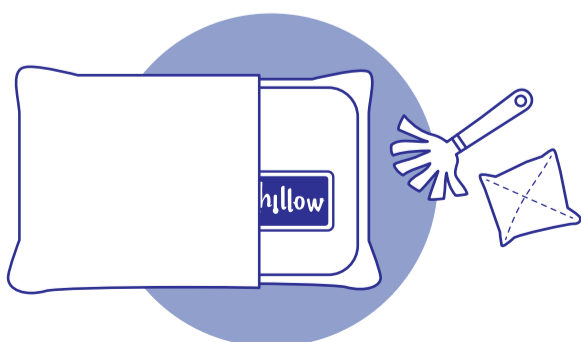
2 BECOMES TWISTED

SIMPLY REMOVE THE CAP AND BLOW SOME AIR INTO THE CHILLOW. REPLACE THE CAP. ONCE THE VACUUM SEAL IS BROKEN, THE CORE WILL MOVE FREELY. YOU CAN NOW SHAKE IT BACK INTO PLACE. START BY REPOSITIONING ONE CORNER FIRST, AND THEN HOLD IT, AND REPOSITION THE OTHER 3.



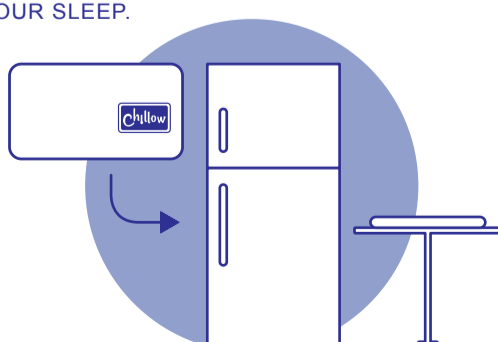
3 COVERED OR UNCOVERED

TRY YOUR CHILLOW IN A PILLOWCASE, OR USE IT UNCOVERED FOR MAXIMUM COOLING BENEFIT. IF THE CHILLOW IS USED UNCOVERED, WE RECOMMEND TO CLEAN IT MORE OFTEN.



4 TO STORE

LEAVE THE WATER INSIDE. DO NOT EMPTY THE WATER. SET IT FLAT AT ROOM TEMPERATURE ON TOP OF A TOWEL OR SOFT ABSORBENT SURFACE. YOU CAN ALSO STORE IT IN REFRIGERATOR (NOT FREEZER) SO THAT YOU WILL ALWAYS HAVE A COOL, FLEXIBLE, COMPRESSIBLE CHILLOW EVERY NIGHT BEFORE YOUR SLEEP.



To prevent damage and ensure continued enjoyment of your Phonebibi product, please review the installation video and check the user manual before using the product. Failure to observe these precautions could result in damage to the product. Phonebibi will not be held liable for any damages resulting from the use of this product.