



ULA PLAY MAT ASSEMBLY

The Ula Play Mat features a Moroccan-inspired diamond print. The large diamonds on each tile are all meant to face the same direction (see Fig. A).

Instructions

- Lay all of the tiles down in your desired space with diamonds facing in one direction (horizontally or vertically).
- Once satisfied, connect the tiles together.
- Connect your four corner edge pieces first.
- Connect remaining straight edge pieces last.

CORNER EDGE PIECE

Has a rounded corner on one end.



STRAIGHT EDGE

Does not have a rounded corner on either end.



FIG. A



ULA SERIES ASSEMBLY

4X6

CORNER



CORNER

ULA SERIES ASSEMBLY

4X8



ULA SERIES ASSEMBLY

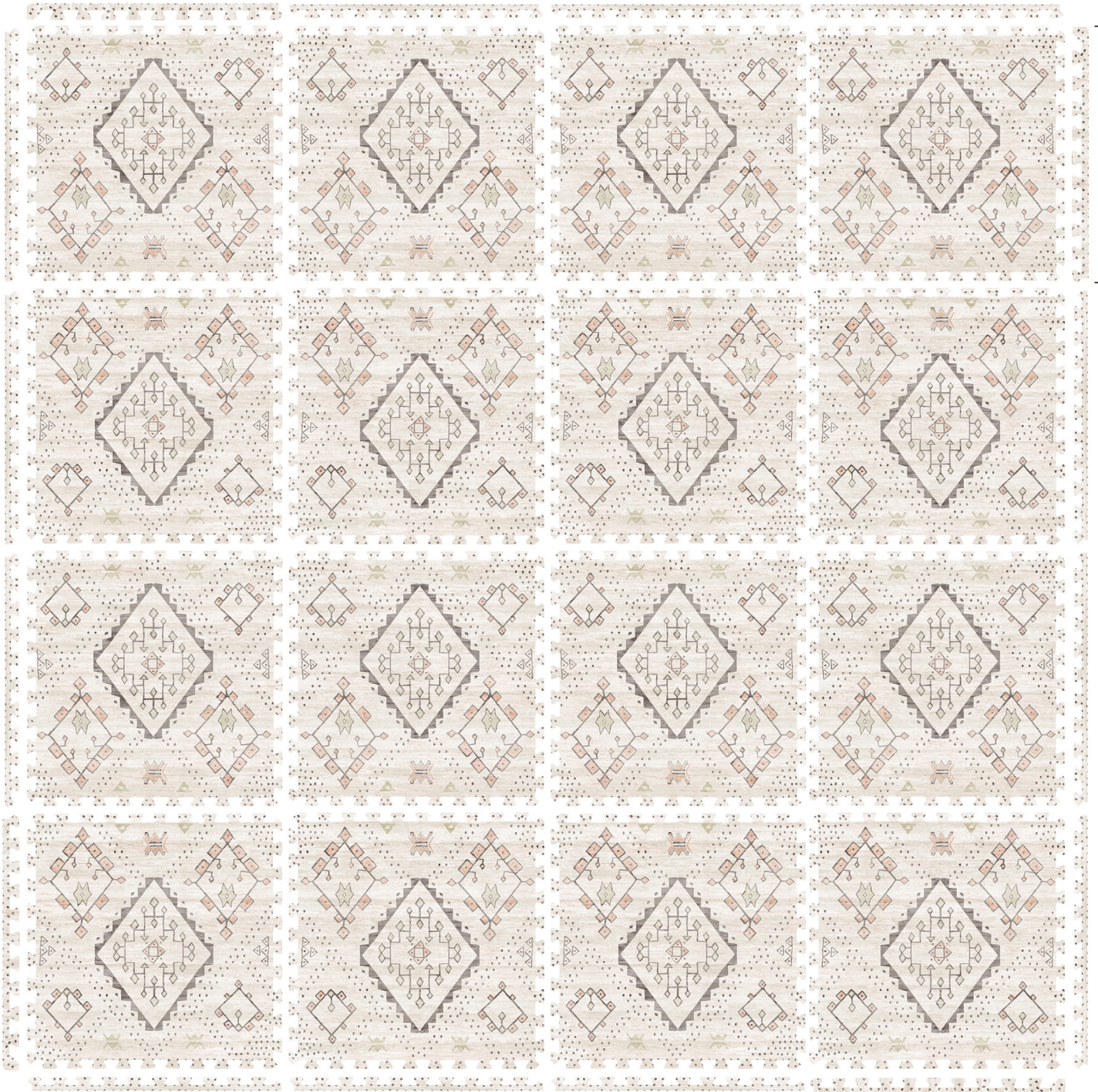
8X8

CORNER

CORNER

CORNER

CORNER



ULA SERIES ASSEMBLY

8X10

CORNER

CORNER

CORNER

CORNER



ULA SERIES ASSEMBLY

8X12



ULA SERIES ASSEMBLY

10X12

CORNER



CORNER