



HEIRLOOM SERIES ASSEMBLY

This guide is intended for the following ROAM FREE® PLAY MATS:

- DUSK
- FEATHER
- MIST
- PETAL

When assembling your play mat start with an A Pattern and B Pattern pile. They can then be layed in a checker pattern A, B, A, B, etc.

When attaching edges connect your four corners first, followed by your straight finishing edge.

Edges are mix and match meaning they are not all going to align perfectly to the pattern on the tile.



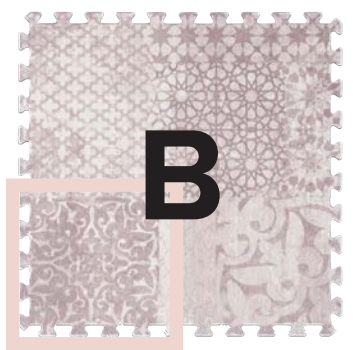
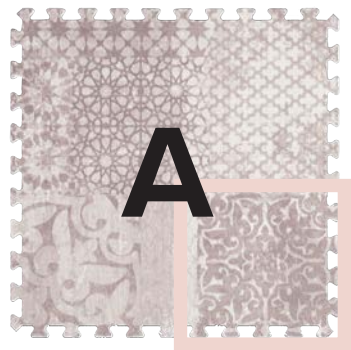
STRAIGHT EDGE



CORNER EDGE

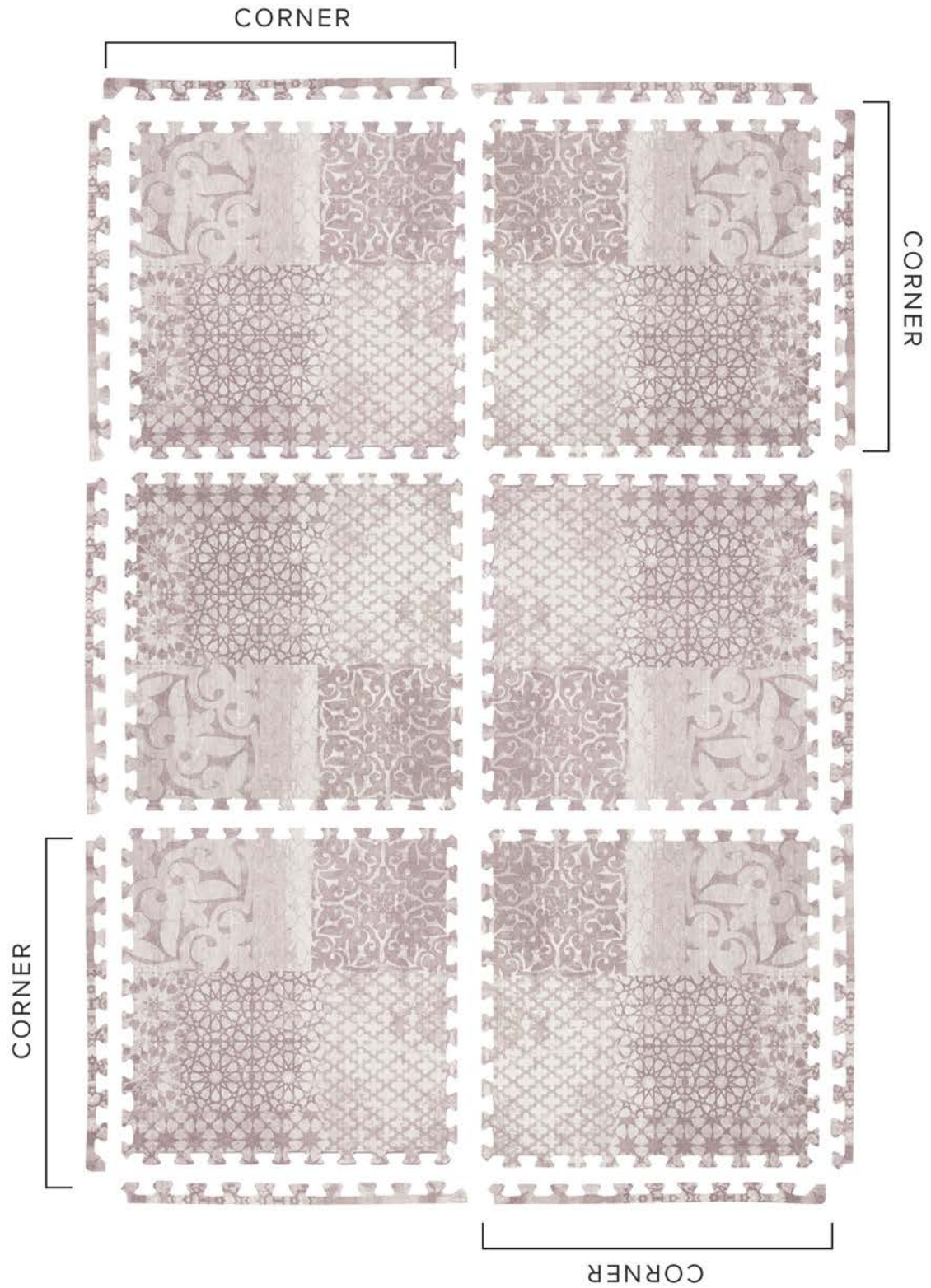
A TILES:
Dark square lower right

B TILES:
Dark square lower left



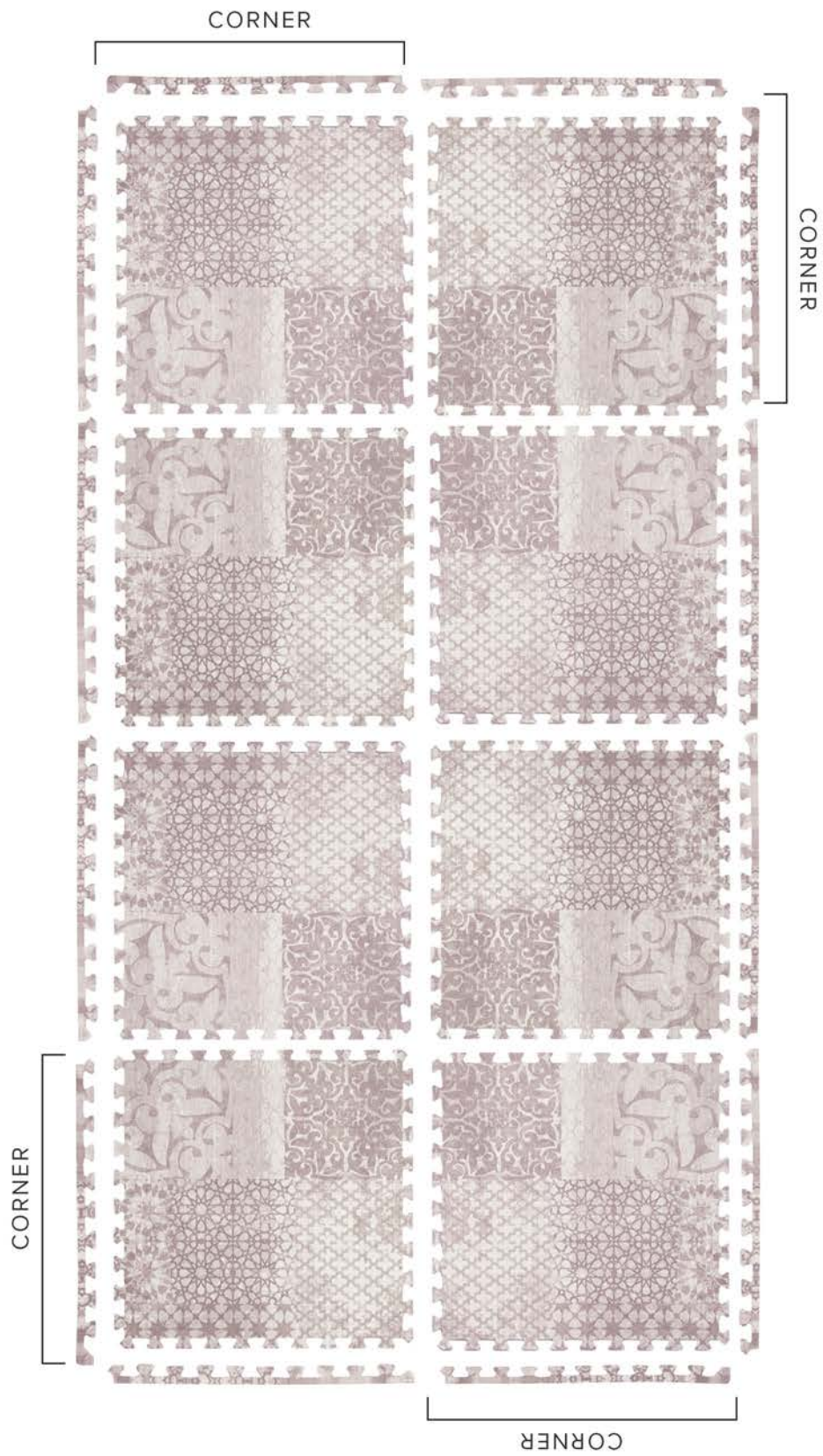
HEIRLOOM SERIES ASSEMBLY

4X6



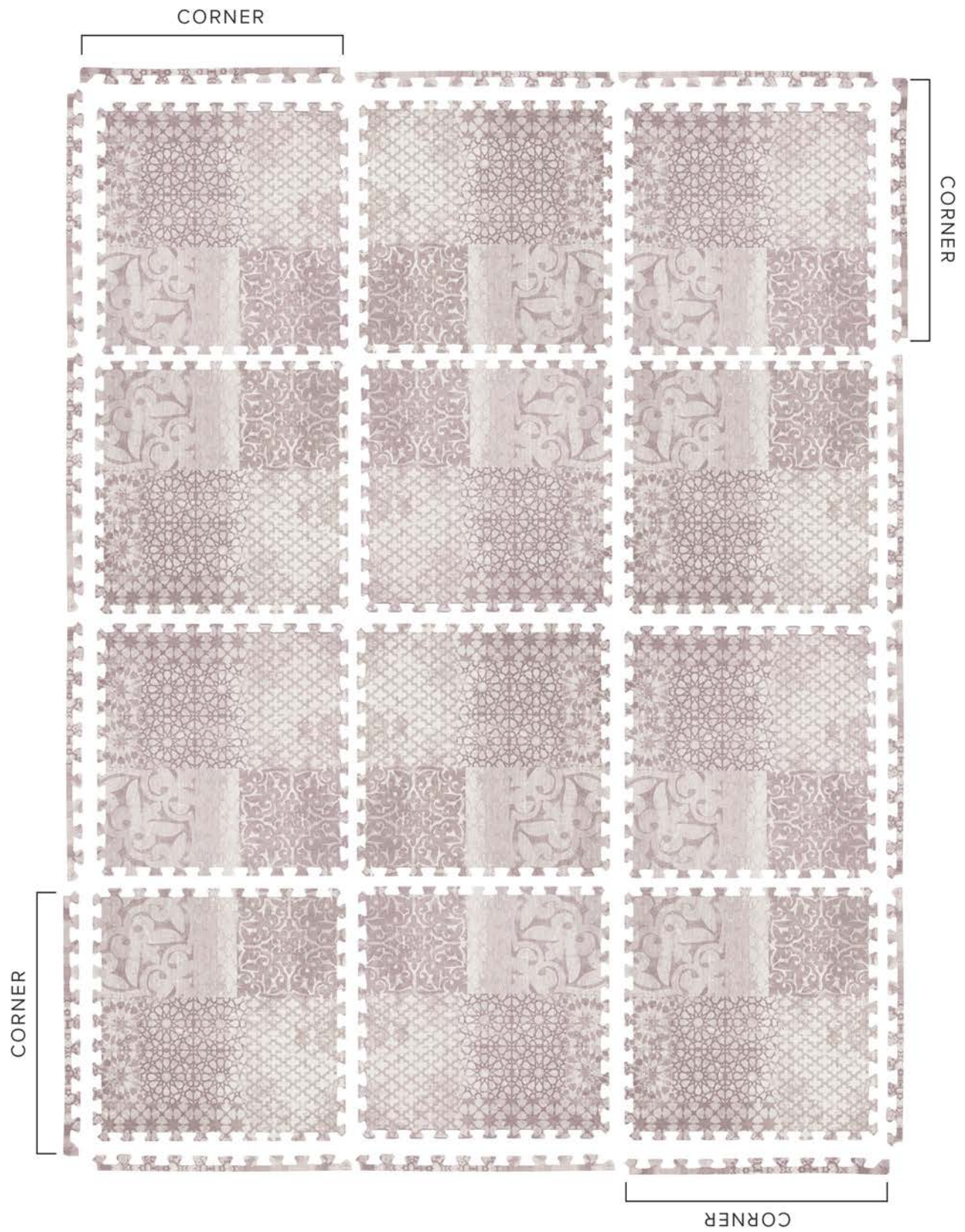
HEIRLOOM SERIES ASSEMBLY

4X8



HEIRLOOM SERIES ASSEMBLY

6X8



HEIRLOOM SERIES ASSEMBLY

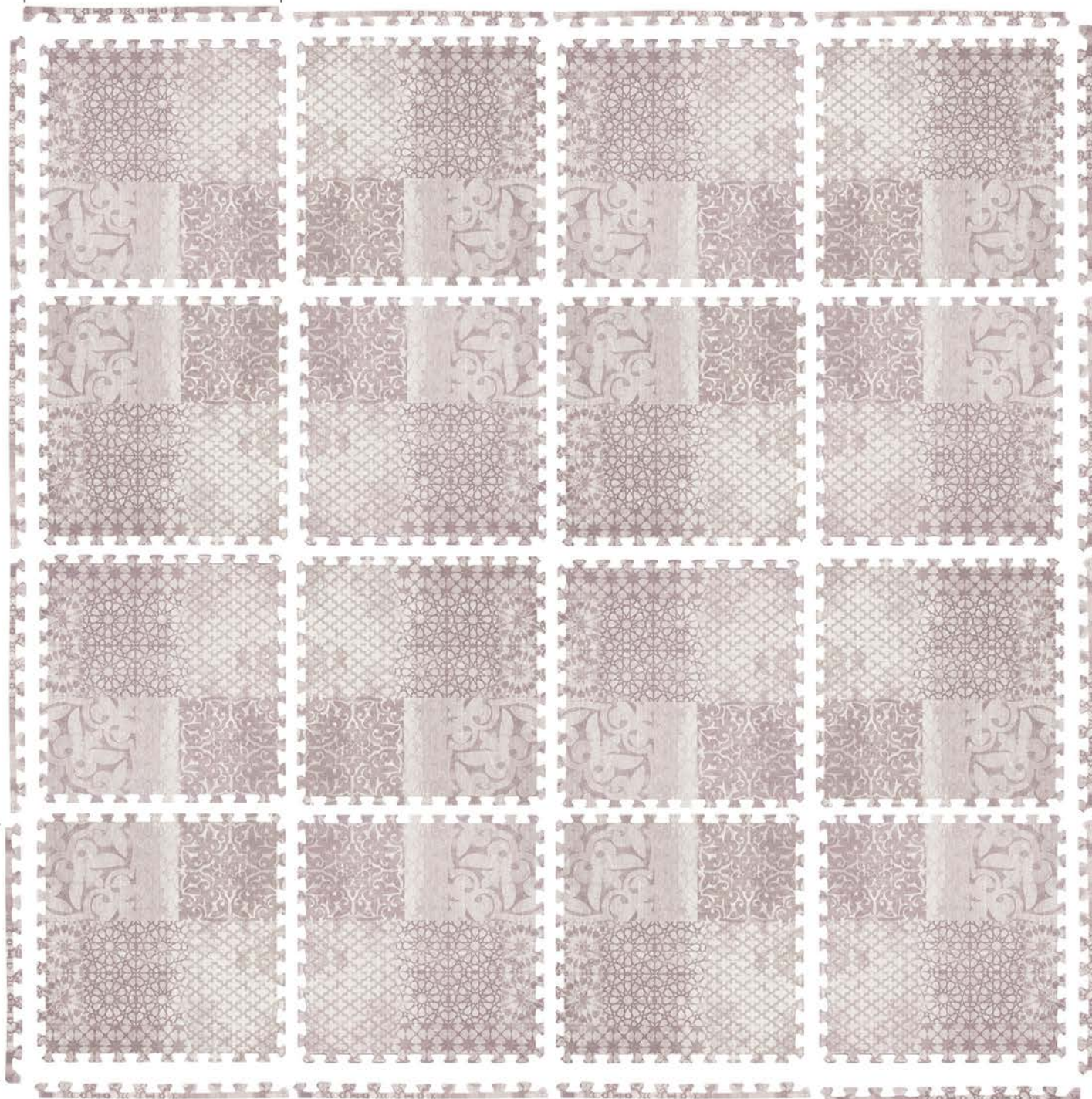
8X8

CORNER

CORNER

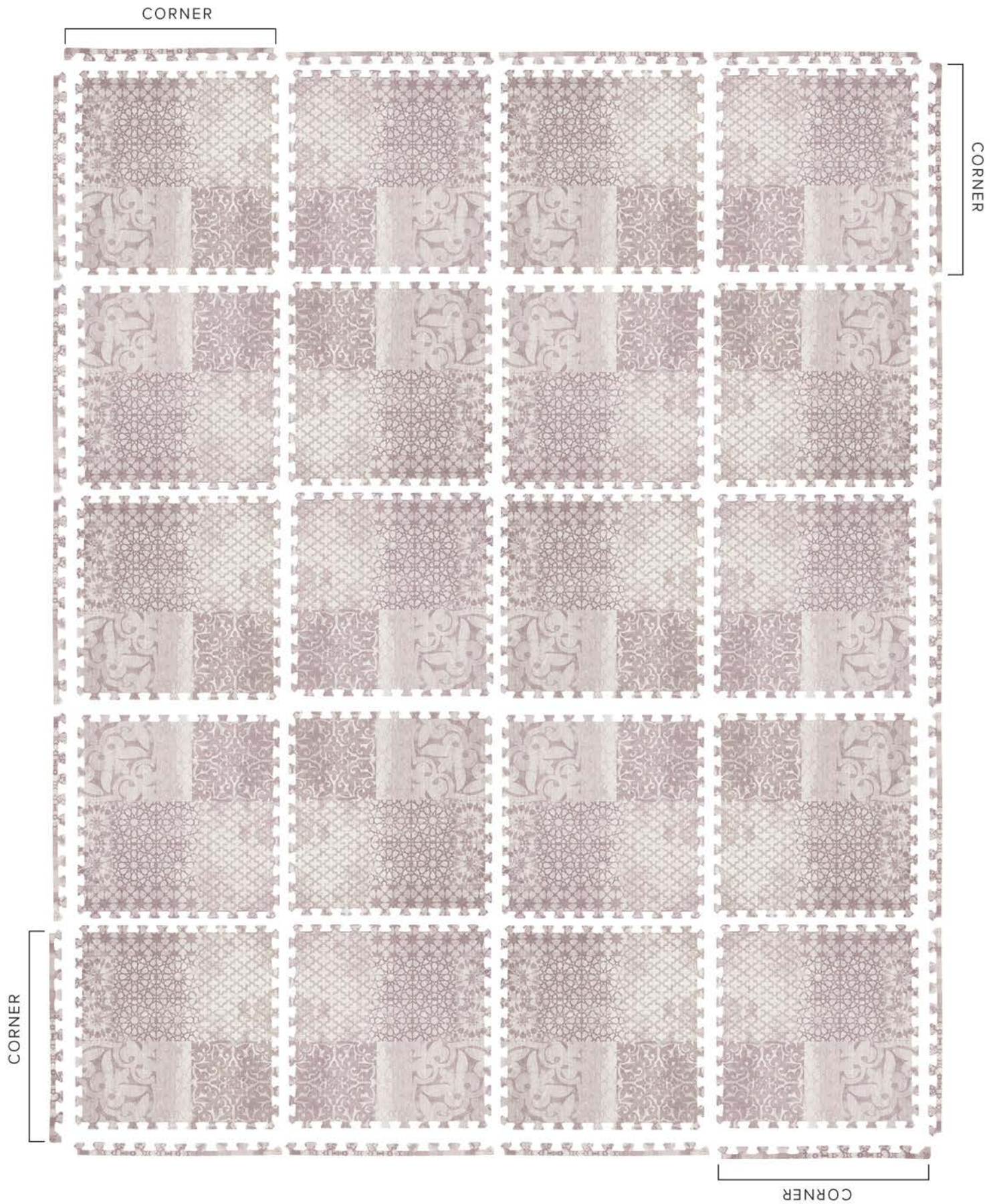
CORNER

CORNER



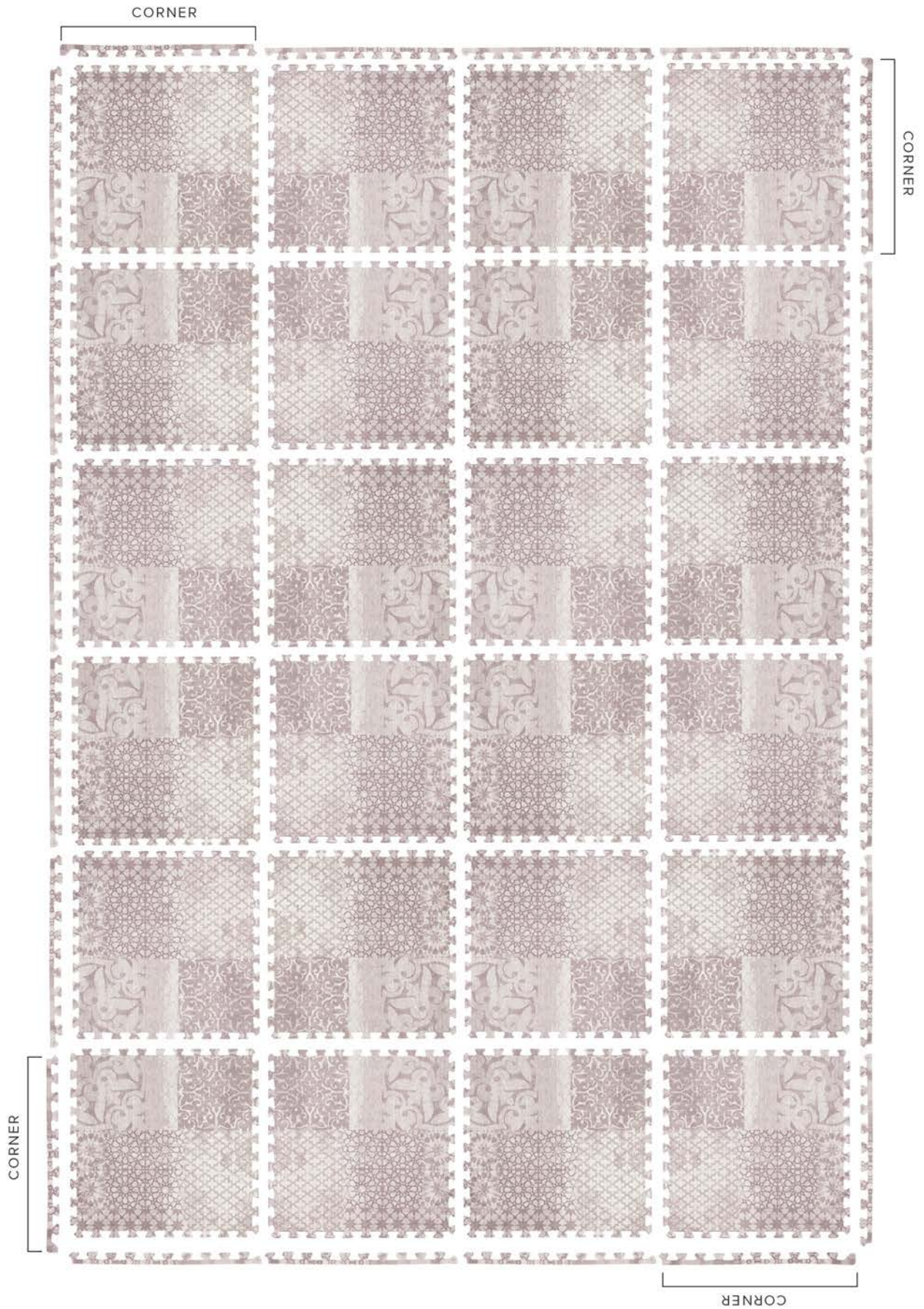
HEIRLOOM SERIES ASSEMBLY

8x10



HEIRLOOM SERIES ASSEMBLY

8x12



HEIRLOOM SERIES ASSEMBLY

10x12

