

FAWN PLAY MAT ASSEMBLY

The Fawn Play Mat features a hand painted brushstroke design that should be aligned either vertically or horizontally. The darker brushstrokes on each tile can serve as an indicator for assembly.

Instructions

- Lay all of the tiles down in your desired space
- Ensure the brushstrokes in the design are aligned in one direction
- Once satisfied, connect the tiles together
- Connect your four corner edge pieces first
- Connect remaining straight edge pieces last

CORNER EDGE PIECE

Has a rounded corner on one end.



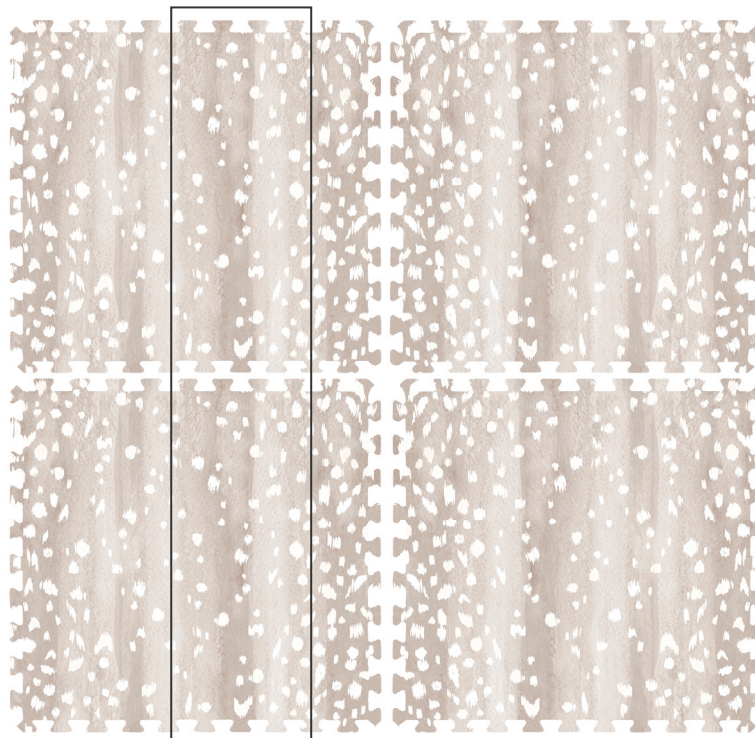
STRAIGHT EDGE

Does not have a rounded corner on either end.



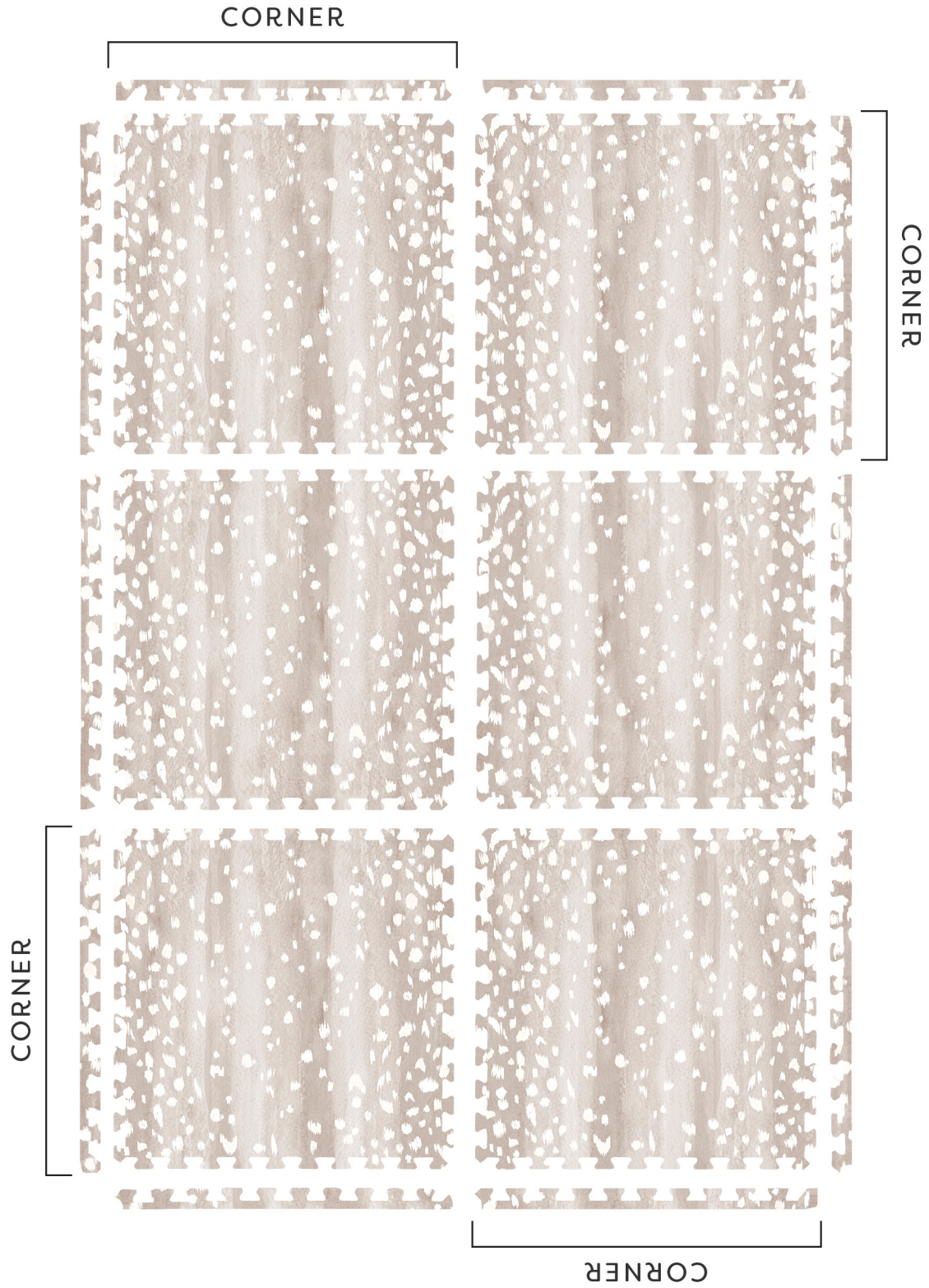
FIG. A

Darker brushstroke.



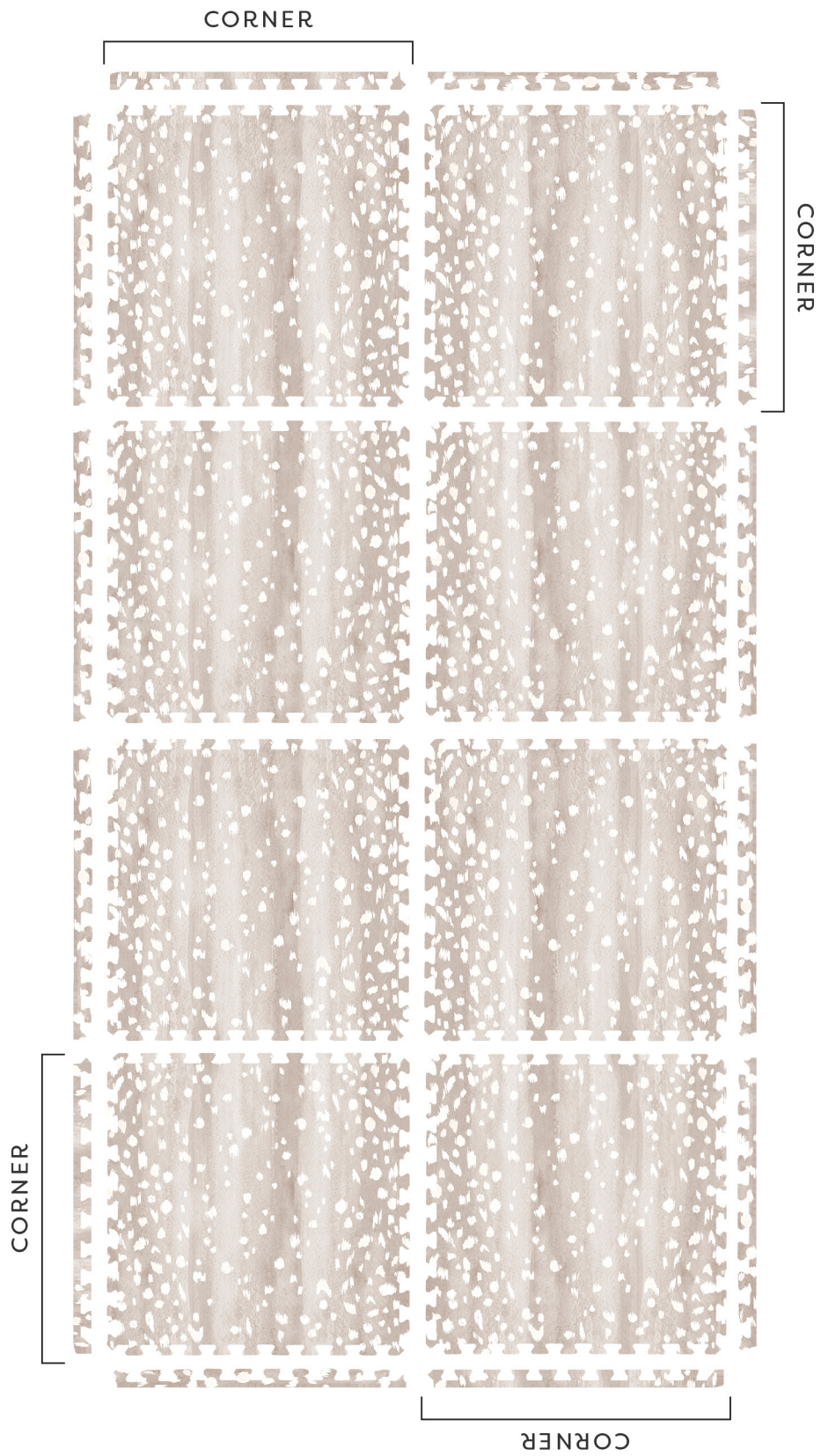
FAWN SERIES ASSEMBLY

4X6



FAWN SERIES ASSEMBLY

4X8



FAWN SERIES ASSEMBLY

6X8



FAWN SERIES ASSEMBLY

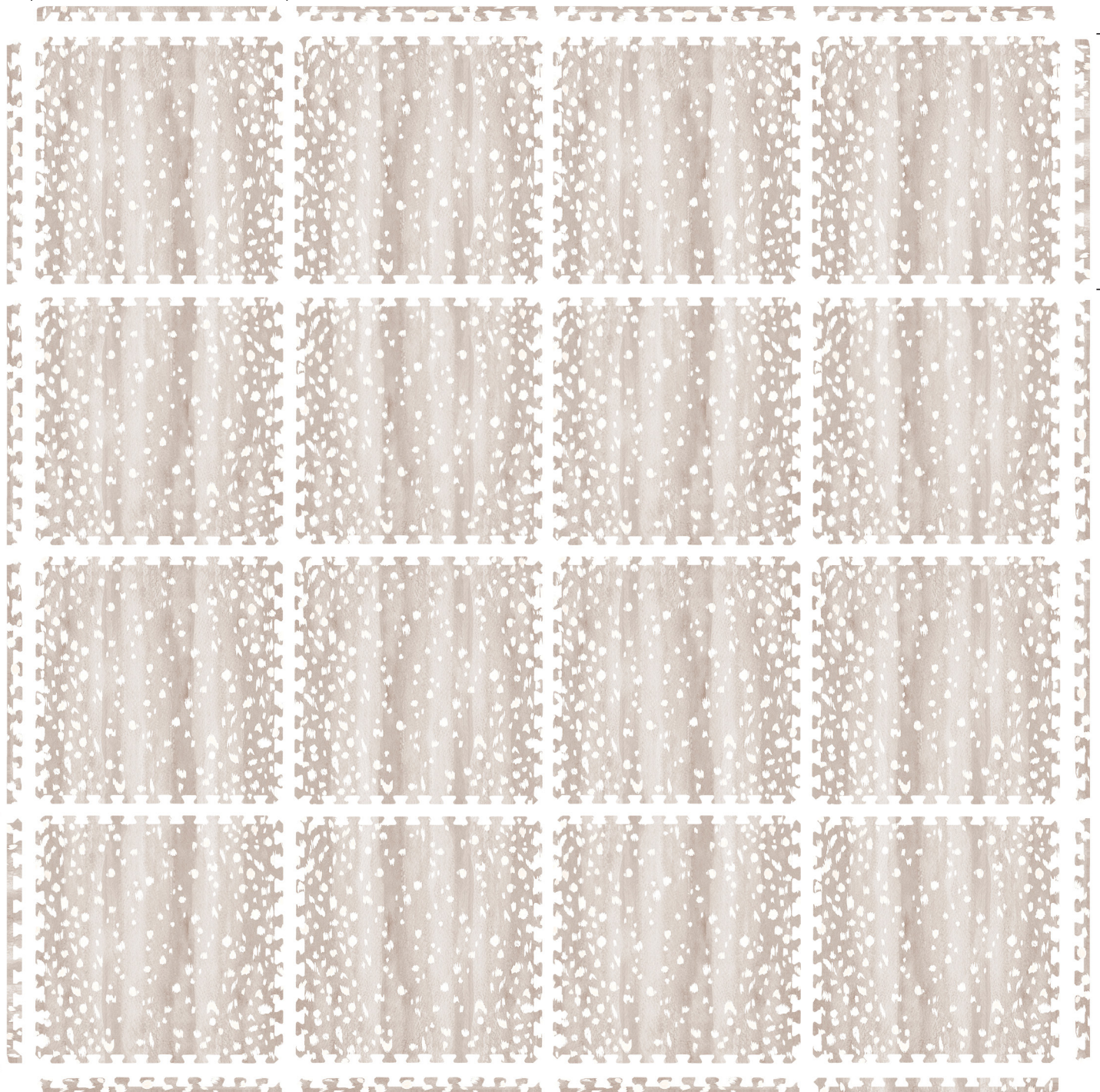
8X8

CORNER

CORNER

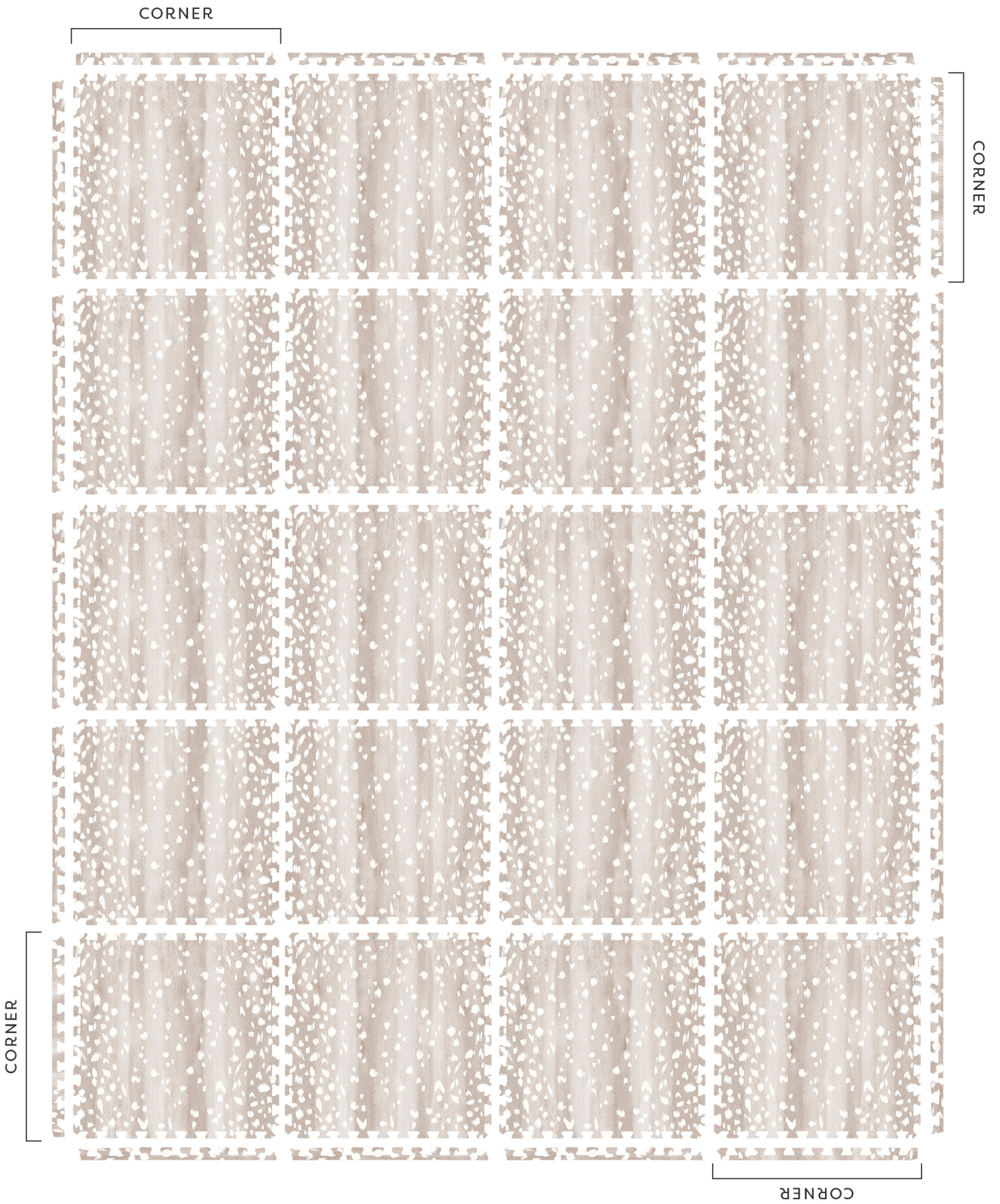
CORNER

CORNER



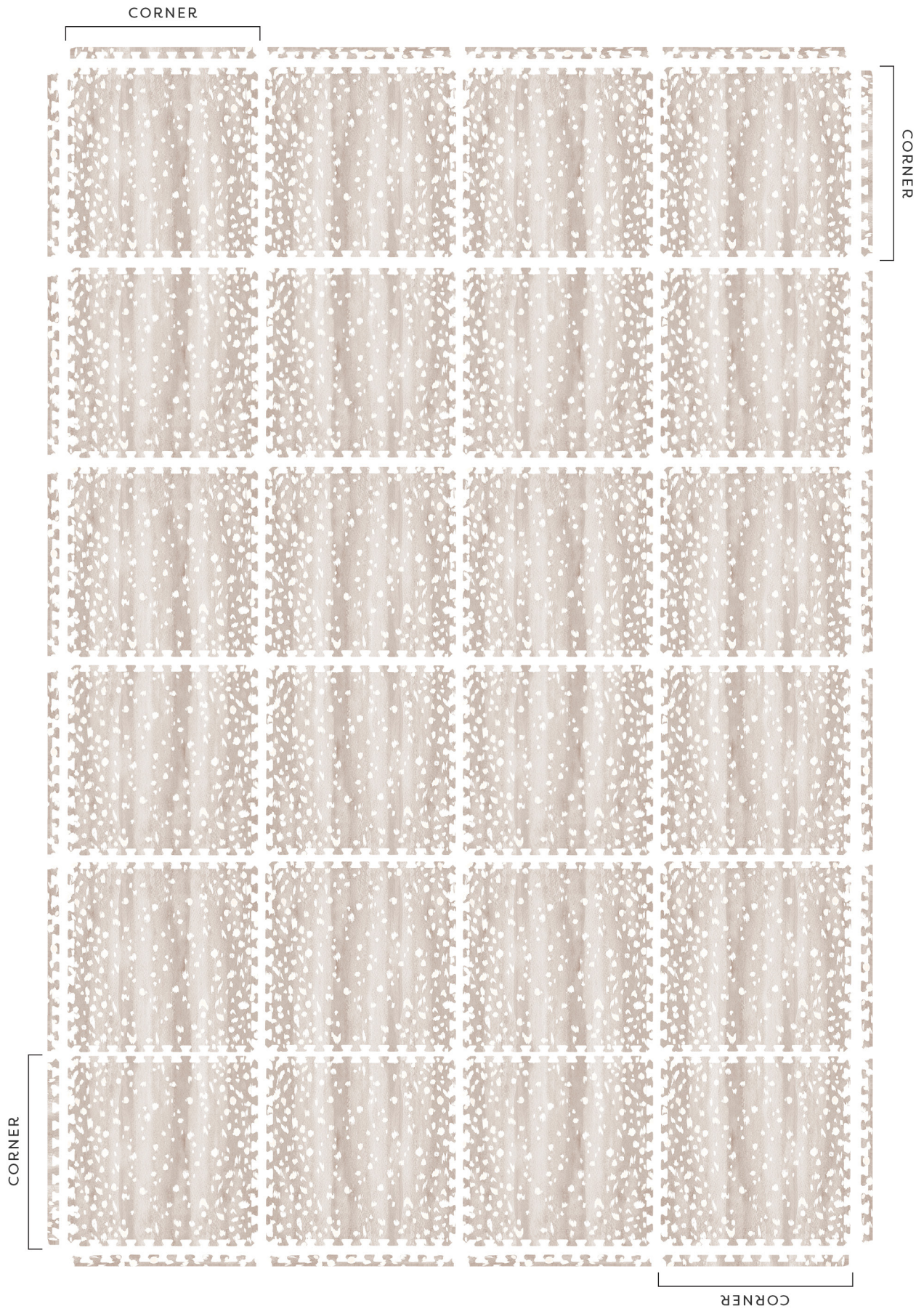
FAWN SERIES ASSEMBLY

8X10



FAWN SERIES ASSEMBLY

8X12



FAWN SERIES ASSEMBLY

10X12

