



# DELLA SERIES ASSEMBLY

The Della Play Mat features a hand-illustrated leopard print design. There are letters on the back to help guide you using the pages below for your corresponding size.

Let's put it together! Start by removing all of the edge pieces from your tiles and set them aside. On the back of each play mat tile, you'll see the letter A, B, C or D. Before you put the tiles together, lay all your tiles out upside down using the guide below. Then flip each tile over and connect them. Attach the edge pieces last.

*\* Play mats are designed modularly to fit a variety of sizes and spaces. All of our prints are hand-illustrated and there may be some areas where pattern alignment is varied - just like art in real life, we embrace the imperfections!*

### CORNER EDGE PIECE

Has a rounded corner on one end.

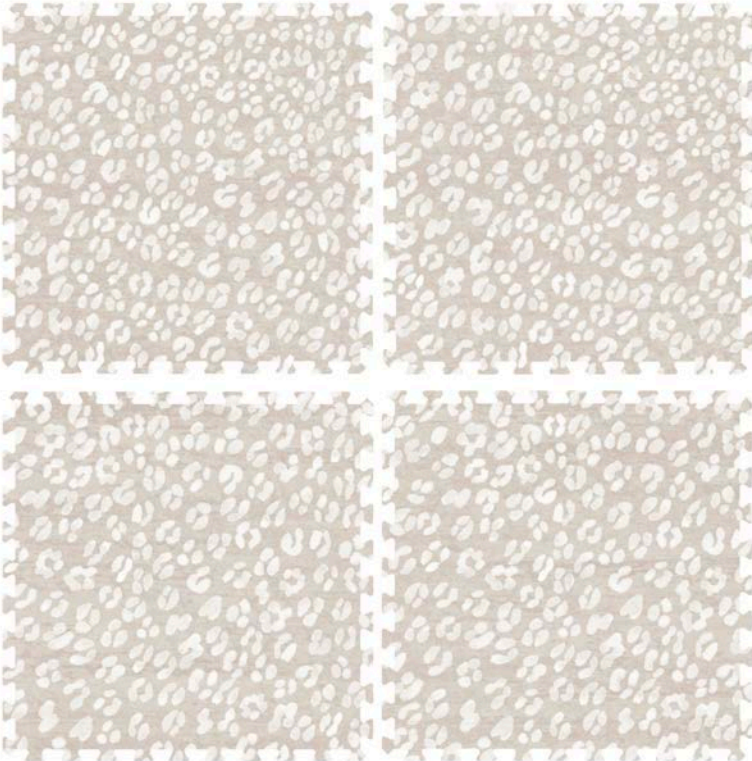


### STRAIGHT EDGE

Does not have a rounded corner on either end.

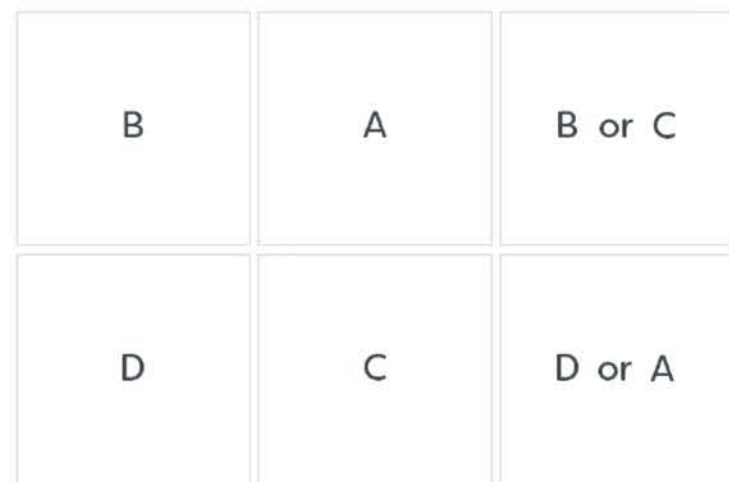


FIG. A

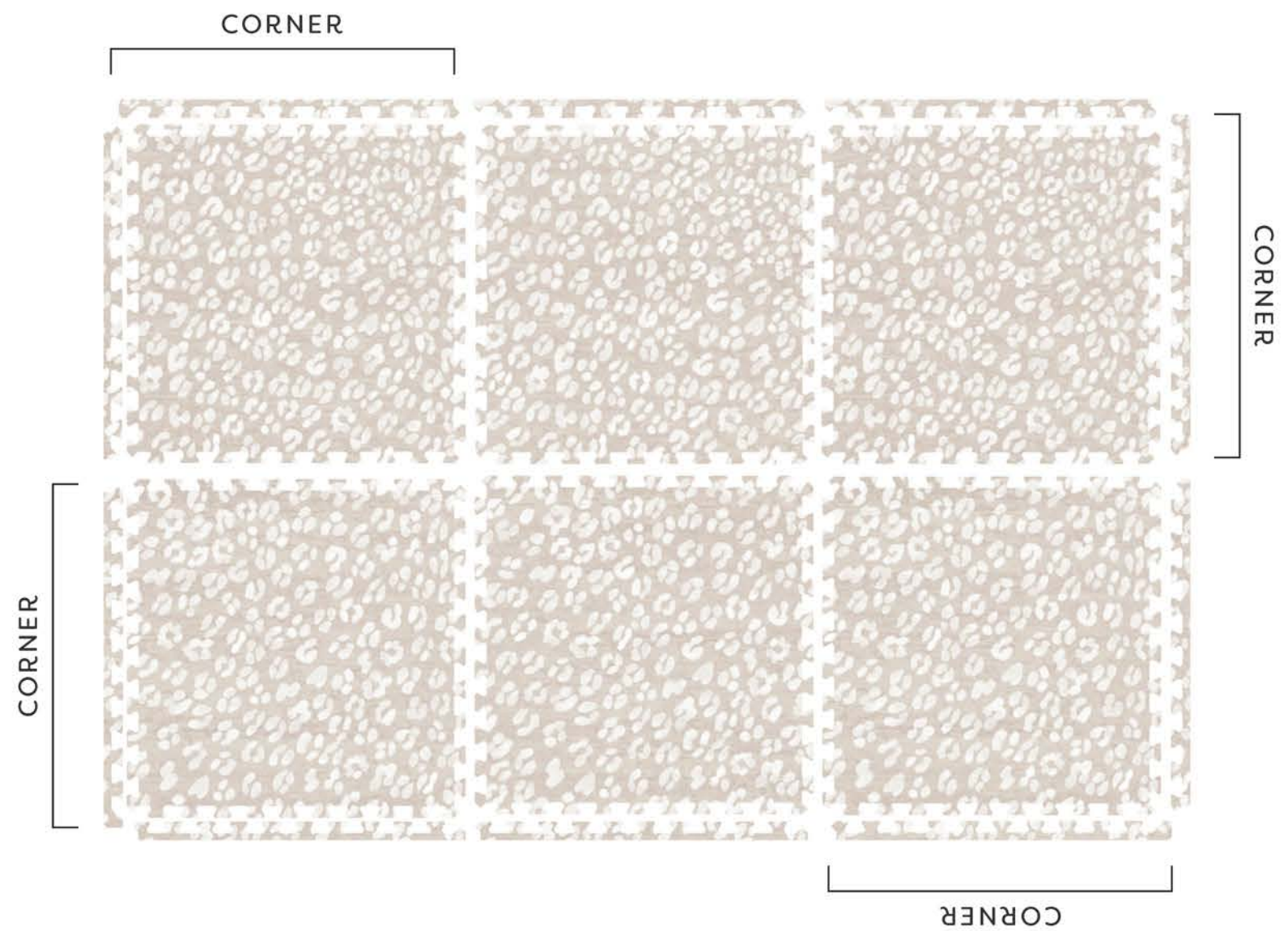


# DELLA SERIES ASSEMBLY

4X6

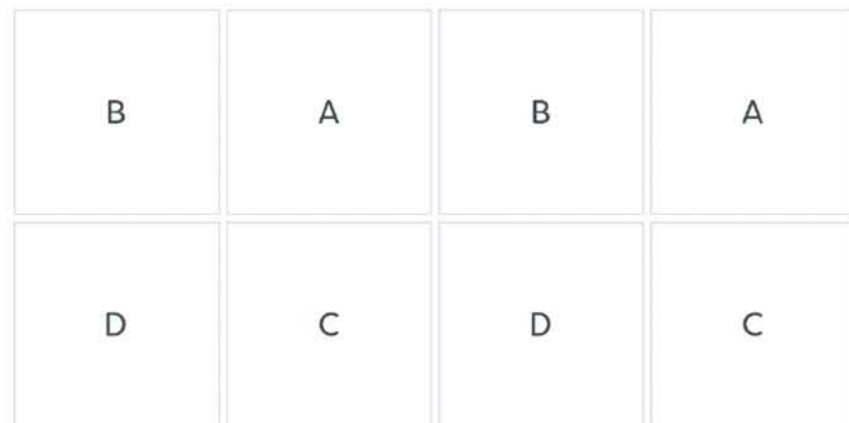


*Before putting tiles together, lay all tiles out upside down using this guide. Then flip each tile over and connect them. Attach the edge pieces last.*

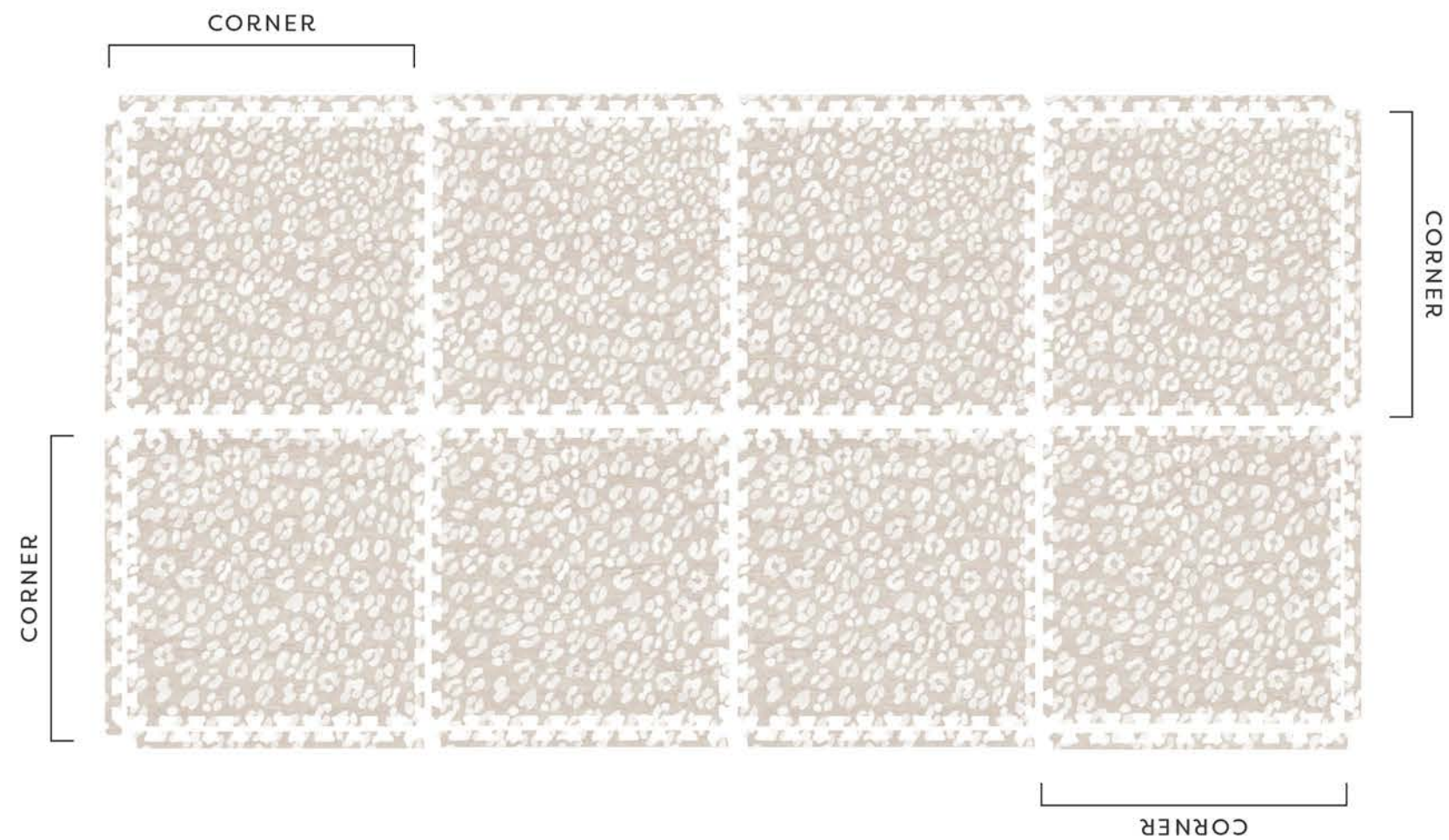


# DELLA SERIES ASSEMBLY

4X8



*Before putting tiles together, lay all tiles out upside down using this guide. Then flip each tile over and connect them. Attach the edge pieces last.*

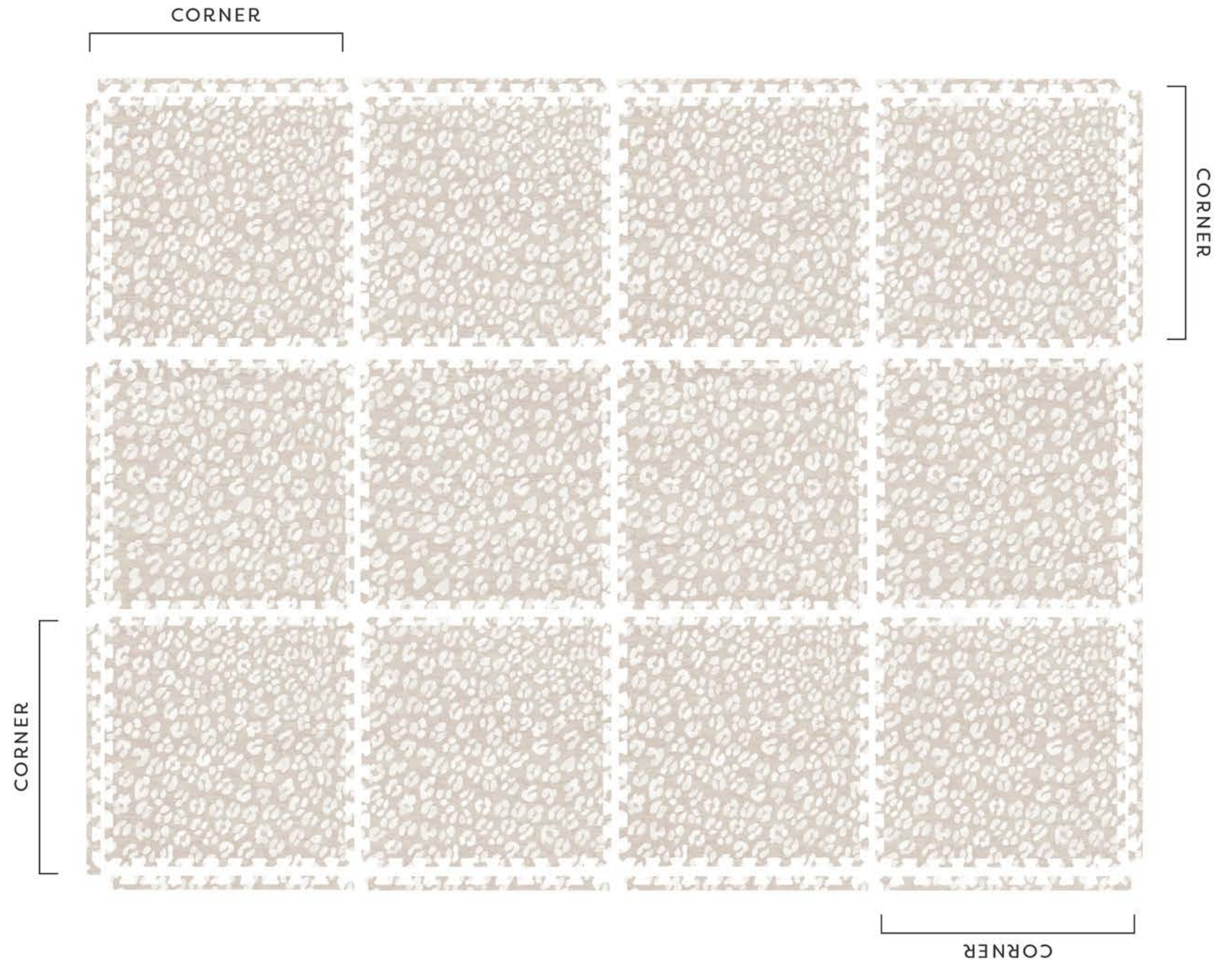


# DELLA SERIES ASSEMBLY

6X8

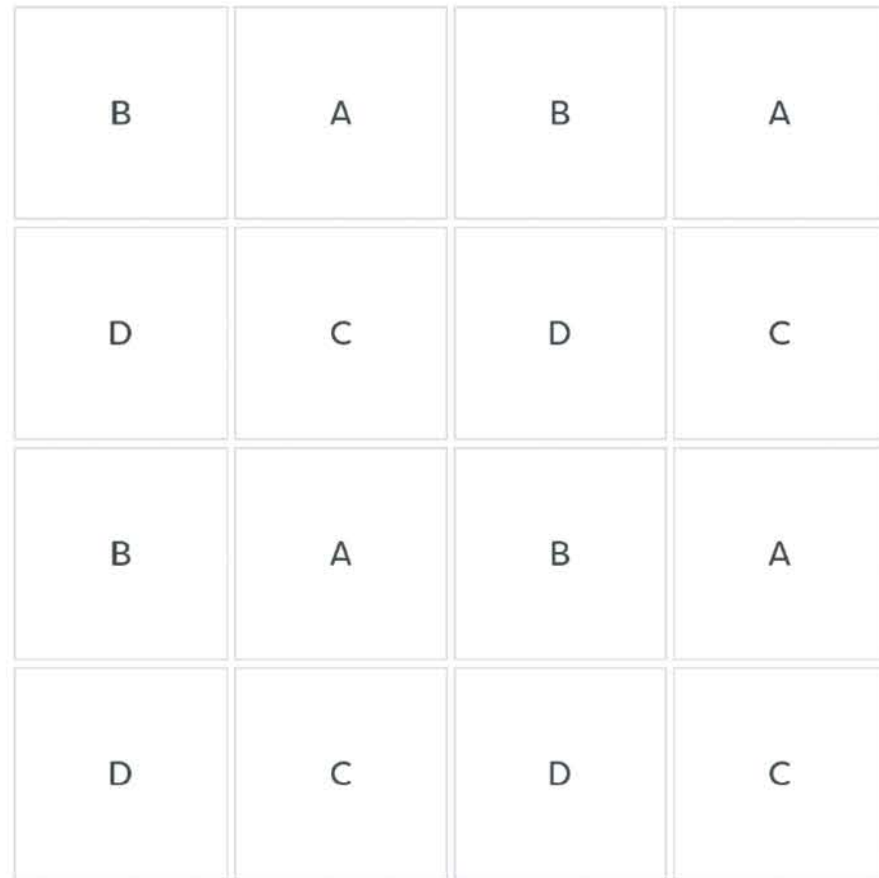
B	A	B	A
D	C	D	C
B or C	A or D	B or C	A or D

*Before putting tiles together, lay all tiles out upside down using this guide. Then flip each tile over and connect them. Attach the edge pieces last.*



# DELLA SERIES ASSEMBLY

8X8



*Before putting tiles together, lay all tiles out upside down using this guide. Then flip each tile over and connect them. Attach the edge pieces last.*

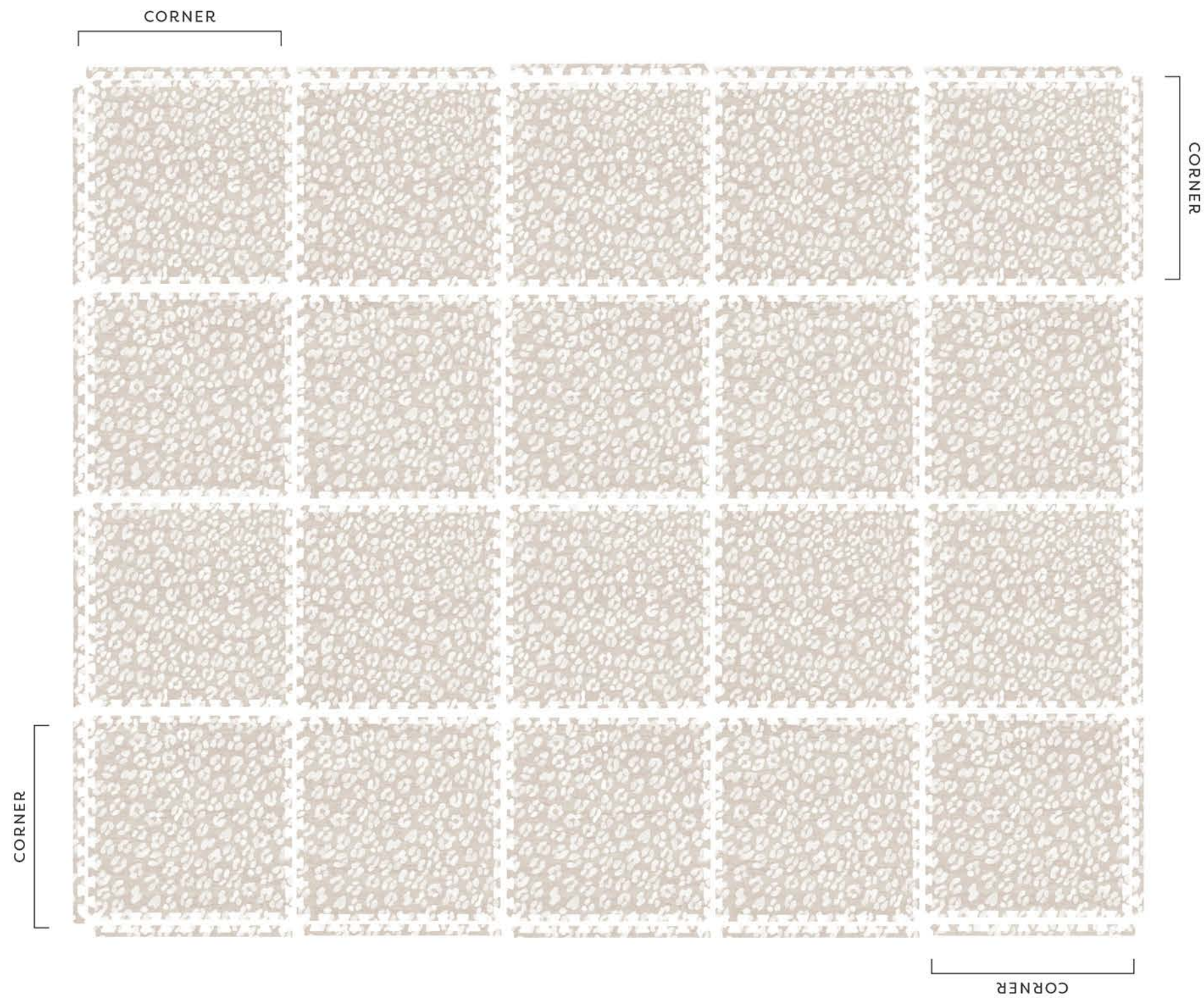


# DELLA SERIES ASSEMBLY

8X10

A or D	B	A	B	A
C or B	D	C	D	C
A or D	B	A	B	A
C or B	D	C	D	C

*Before putting tiles together, lay all tiles out upside down using this guide. Then flip each tile over and connect them. Attach the edge pieces last.*

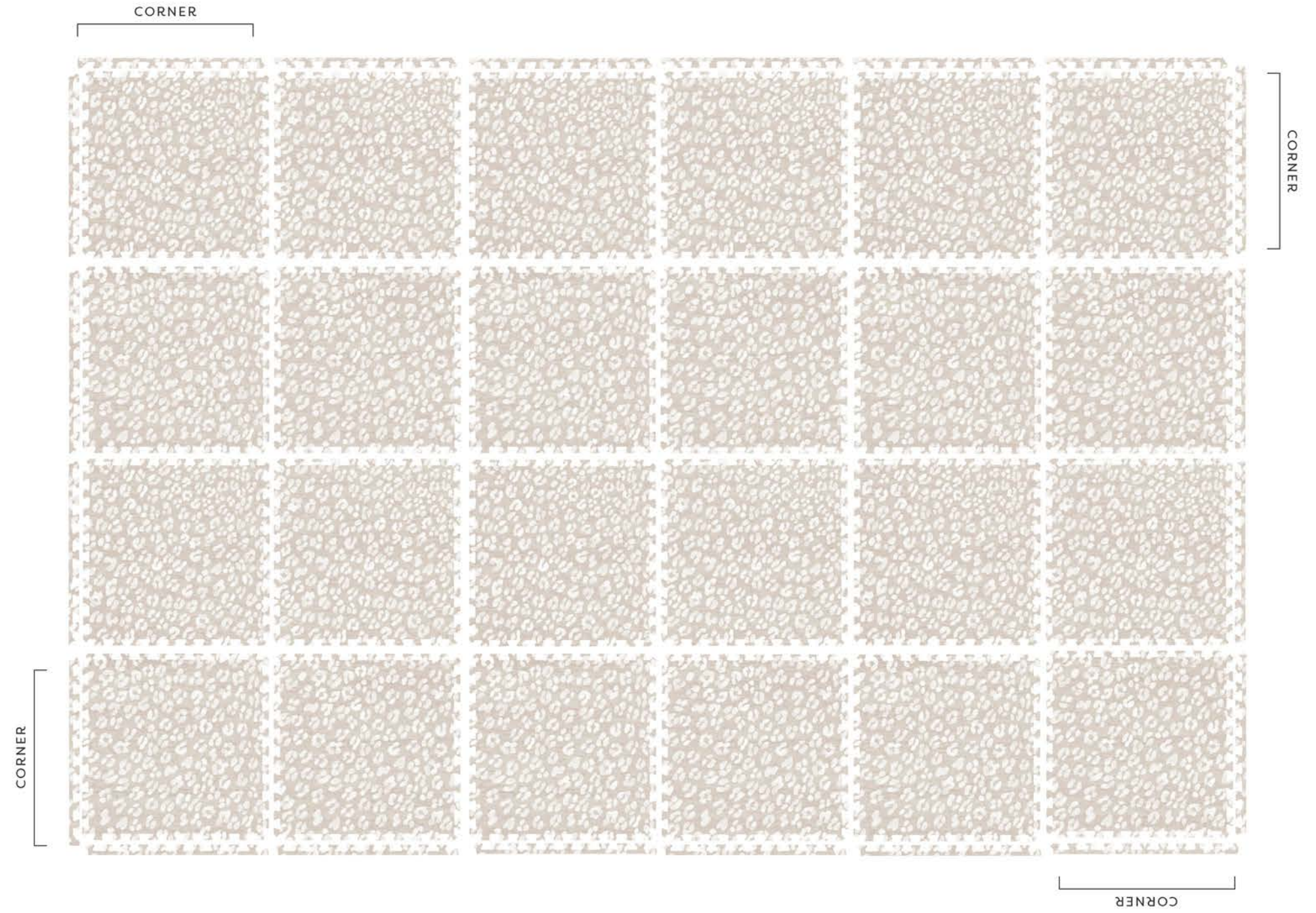


# DELLA SERIES ASSEMBLY

## 8X12

B	A	B	A	B	A
D	C	D	C	D	C
B	A	B	A	B	A
D	C	D	C	D	C

*Before putting tiles together, lay all tiles out upside down using this guide. Then flip each tile over and connect them. Attach the edge pieces last.*



# DELLA SERIES ASSEMBLY

10X12

B	A	B	A	B	A
D	C	D	C	D	C
B	A	B	A	B	A
D	C	D	C	D	C
B	A	C	D	B or C	A or D

*Before putting tiles together, lay all tiles out upside down using this guide. Then flip each tile over and connect them. Attach the edge pieces last.*

