



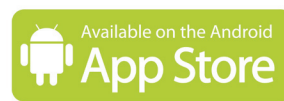
Smart Control  
Life made easier



## ECO1 SMART CONTROL GETTING STARTED

### Setting up your ECO1 Smart Control App for the first time

- 1) When setting up your system for the first time the first thing you will need to do is download the free ECO1 Smart Control from the Apple App store or Android app store



- 2) When you have downloaded the App open, select register and set up a user name and password (see Figure 1).
- 3) You are now ready to start setting up you devices (see Figure 2).
- 4) To change the room picture click on the picture then select camera to take a new picture or photo to select from you photo library (see Figure 3).

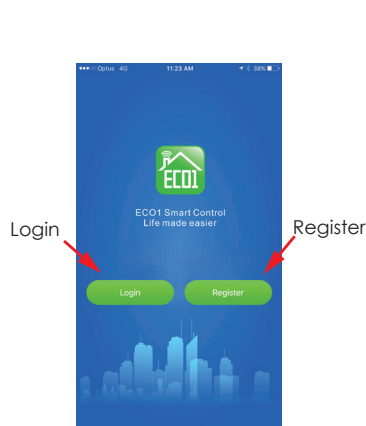


Figure 1

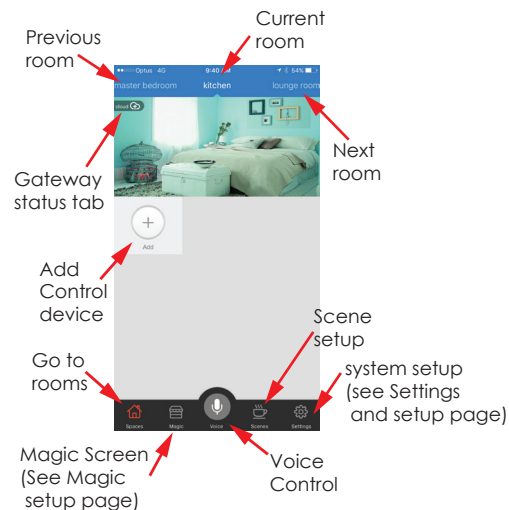


Figure 2

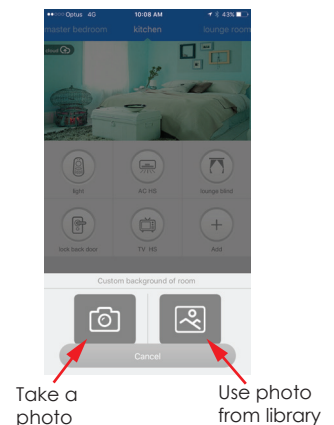


Figure 3

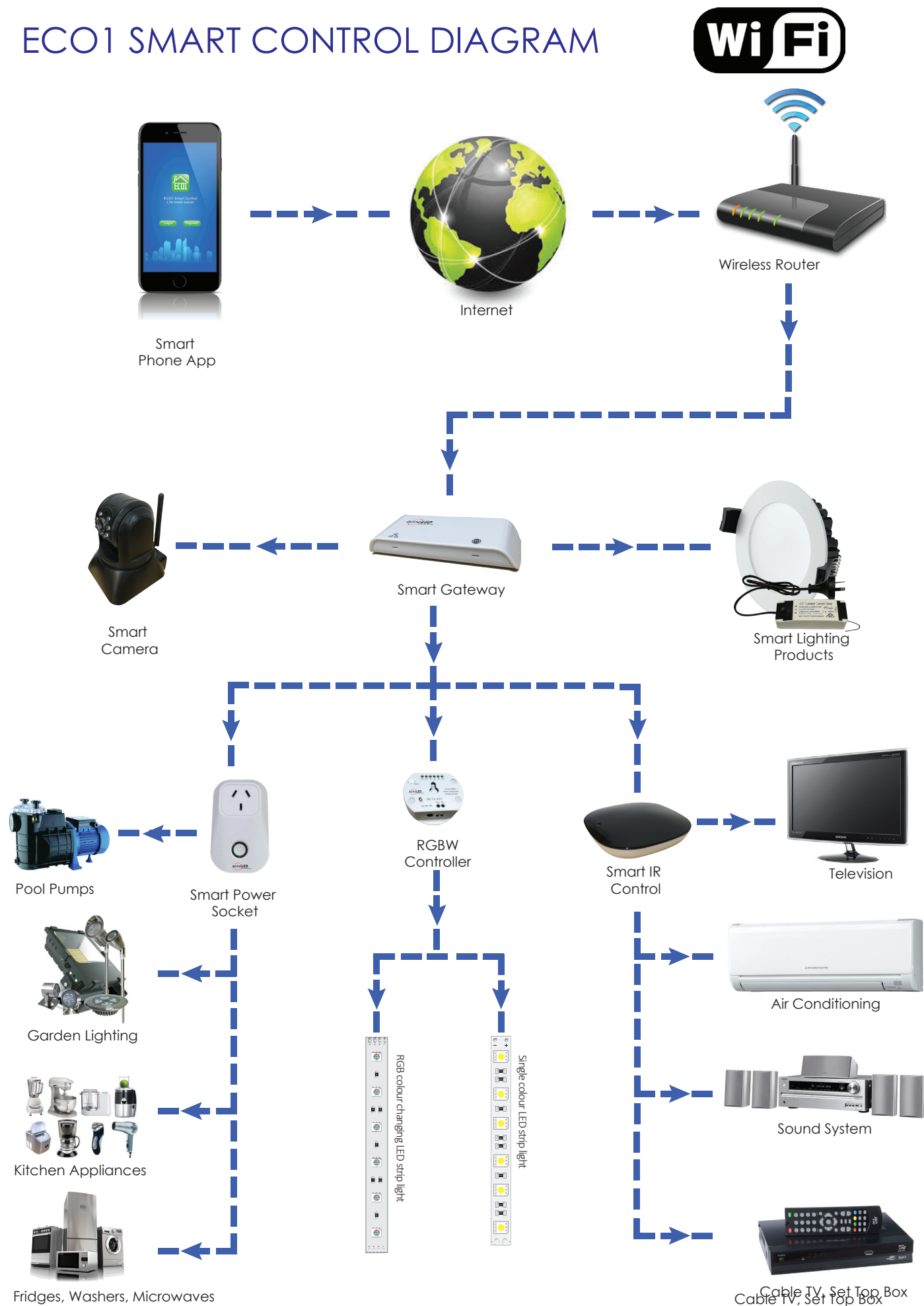
### Equipment you will need

1. Internet connection
2. 1 x Wireless WiFi router ( high bit rate WiFi router will improve system performance)
3. 1 x ECO1 smart control Gateway ( 1 gateway can be used to control up to 200 devices)
4. 1 x ECO1 Smart control control device ( min1 device required select any device form the list in page 2)

### Setting up and personalizing you system

- 1) Connect the gateway to your wifi router with the power supply and ethernet cable provided as per Gateway Instruction sheet (See page 2).
- 2) Add the selected device to the app as per the Device setup instructions.
- 3) Device is now ready to use continue to set up your devices in the selected rooms as required (see setup instructions for other products for more information).

# ECO1 SMART CONTROL DIAGRAM



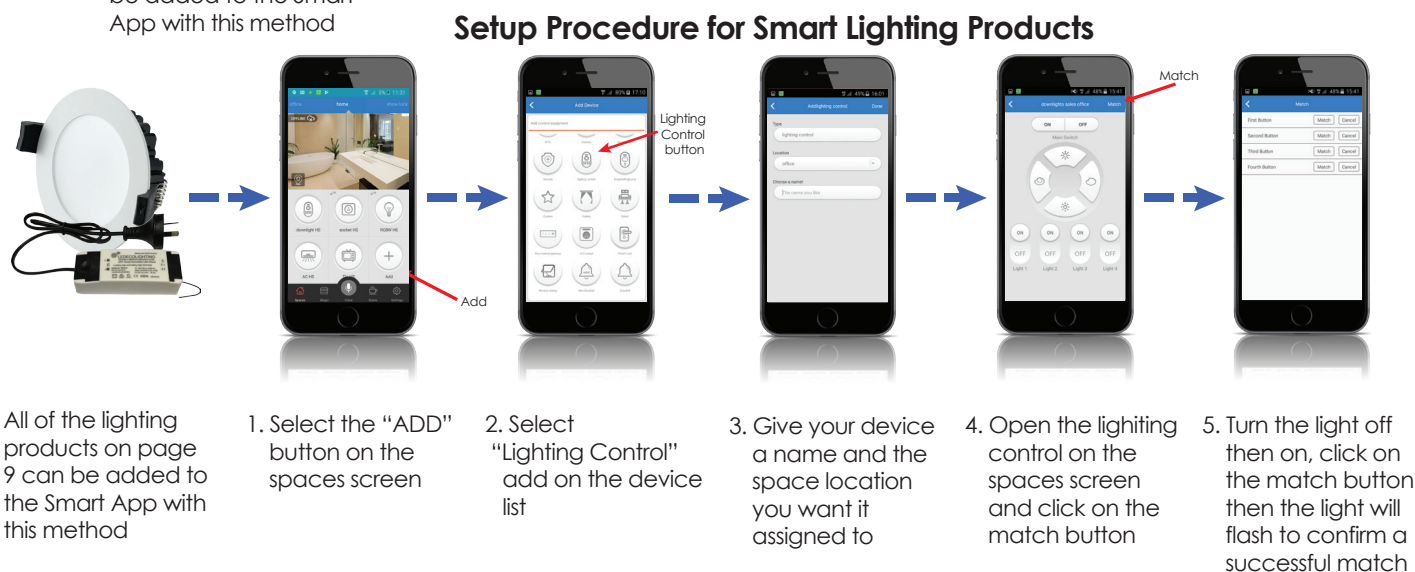
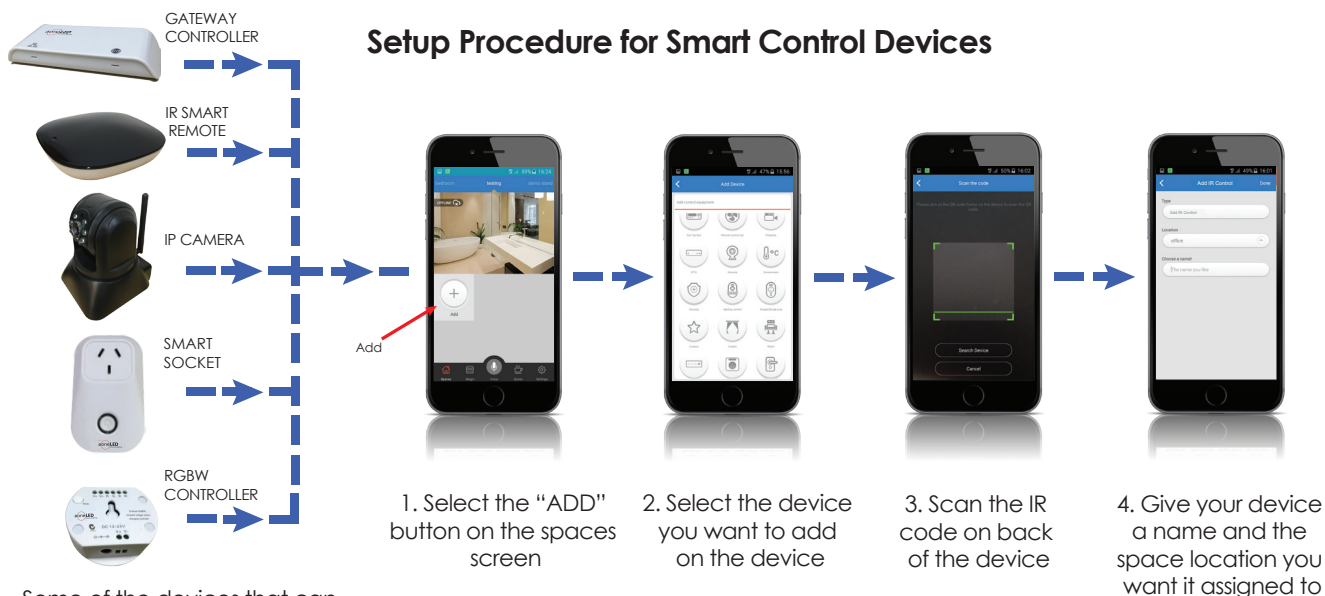


Smart Control  
Life made easier

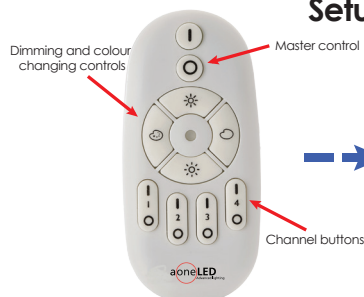


## ECO1 SMART CONTROL QUICK START GUIDE

The setup procedure for Smart products is very simple to setup any device on the Smart App. It can be done in a matter of minutes, the simple setup guide below goes through the basic steps to setup various devices on the Smart App. For more detailed information see the individual instruction sheet for each product.



### Setup Procedure for Hand held Remote for Lighting Products



Hand Held Remote



All of the lighting products on page 9 can be added with this method

1. Select the lamps which are to be group controlled and turn power ON,
2. Switch OFF the power, then back ON again within 3 seconds, quickly press the CH1/ON button once. The selected lamps will flash slowly 3 times to confirm that the lamps are successfully matched or grouped.
4. Repeat the steps above if required for channels 2, 3 and 4 as required.

\*\*\*NOTE Hand held remote control works independently and the Smart App is not required to dim or change colour temperature if using this hand held remote



Smart Control  
Life made easier

## ECO1 SMART CONTROL DEVICES

### SMART GATEWAY

The Gateway links your Smart products with your mobile phone and enables you to control devices locally or from anywhere in the world. The gateway can be connected into any standard wireless router.

Product Code	Input Voltage	Wireless Type
WG-100	5VDC	2.4GHz



Smart gateway setup screen



### SMART RGBW CONTROLLER

The Smart RGBW colour changing controller can control colour changing low voltage lighting such as flexible strip or garden lighting or single colour lights or both at the same time and also has a dimming function.

Product Code	Input Voltage	Power rating
GS-RGBW	12-24VDC	4CH@6A/CH Max



Smart RGBW dimming function screen



Smart RGBW colour changing screen

### SMART IR CONTROL

The Infrared Smart remote can control any device such as air conditioning, TV's, sound systems. Infact any product that has an IR remote, consolidating all your remote controls into your phone.

Product Code	Input Voltage	Wireless Type
IR-100	5VDC	2.4GHz



Smart TV/satellite/cable box/sound systems controller screen



Smart Air Conditioning controller screen

### SMART SOCKET

Smart socket is a 240VAC device with timing function and power consumption display. It can be plugged into a standard power outlet and control any mains voltage appliance or device via the Smart App.

Product Code	Input Voltage	Output Current	Wattage (W)
GS-15	240V AC	10A	2400W



Smart socket controller screen



Smart energy monitoring controller screen



Smart socket timer controller screen

### SMART IP CAMERA

The Smart IP wireless camera has a high resolution camera with sound feature. Can also record video and has pan/tilt capabilities and it can be viewed through the Smart App.

Product Code	Image sensor	Camera Resolution	Pan/Tilt
IP-360S	1/4" Colour CMOS	720p	330°x120°



Smart Camera controller screen



Smart Camera controller screen large (horizontal view)

### SMART HAND HELD REMOTE

The hand held remote connects directly to the Smart lighting products without the gateway and Smart App. It has four switching channels plus master on/off, colour temperature changing and dimming function.

Product Code	Input Voltage	Wireless Type
CT-3	3VDC	2.4GHz



Smart Lighting controller screen



All lighting products can be controlled with the Smart or with the hand held remote directly



Smart Control  
Life made easier

## ECO1 SMART CONTROL DEVICES

### DOOR CAMERA/INTERCOM

The Smart Intercom/camera and door chime simply press the the bell button and it rings and indoor chime and also notifies you on your phone it has a talk and listen function and also record capabilities comes complete with indoor chime.

Product Code	Input Voltage	Wireless Type	Lens Angle	Pixels
IDB-170-3	6VDC	2.4GHz	170 Degree	3Mp
IDB-120-1	6VDC	2.4GHz	120 Degree	1Mp



Intercom/camera screen



### CURTAIN CONTROLLER

Smart curtain controller allows you to control you curtains opening and closing also can be set up in a scene function or preset timing curtain rods available in various sizes or customised also hand held remote available.

Product Code	Input Voltage	Wireless Type
CM-20	240VAC	2.4GHz



Smart curtain controller user screen

### ROLLER BLIND CONTROLLER

Smart roller blind controller allows you to control you blinds opening and closing also can be set up in a scene function or preset timing functions blinds available in various sizes or customised also hand held remote available.

Product Code	Input Voltage	Output Current	Wattage (W)
RBM-30	240V AC	10A	2400W



Smart roller blind controller user screen

### DOOR DEAD LOCK

Smart deadlock controller allows you to control the locking and unlocking also can be set up in a scene function comes complete with mountin accessories and 4 key ring remotes.

Product Code	Input Voltage	Wireless Type
DL-4	6VDC	2.4GHz



Smart Lock controller user screen

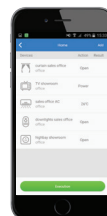
### WIRELESS TOUCH SWITCH

Smart wireless touch switch can be prgrammed to control on/off for Smart sockets and RGBW controllers and can control 4 devices with out the need of your mobile phone

Product Code	Input Voltage	Wireless Type
WS-4	6VDC	2.4GHz



Smart socket controller screen



Smart Scene control screen

### PIR DETECTOR

The Smart PIR detector can be setup to control lighting or other devices when it detects movement.

Product Code	Input Voltage	Wireless Type
PIR-50	3VDC	2.4GHz



Smart PIR linkage screen





Smart Control  
Life made easier



## ECO1 SMART CONTROL DEVICES

### DL49APP

DL49APP downlight and wide beam angle has a variable colour temperature range adjustment from (3000K) to (6000K) and also dimmable via the Smart App and hand held remote. A range of finish colours available.

Product Code	Voltage (V)	Wattage (W)	Power Factor	Luminous Flux (Lm)	Beam Angle	Cutout size (mm)
DL49APP	240V AC	10W	>0.85	900-1000	120	85mm



### DL48APP

This high output and 90 degree beam angle fitting has a variable colour temperature range adjustment from (3000K) to (6000K) and also dimmable via the Smart App and hand held remote. A range of finish colours available.

Product Code	Voltage (V)	Wattage (W)	Power Factor	Luminous Flux (Lm)	Beam Angle	Cutout size (mm)
DL48APP-10W	240V AC	10W	>0.9	850	90	90mm
DL48APP-13W	240V AC	13W	>0.9	1100	90	90mm



### DL48COB-APP

the DL48COB fitting has a 60 degree focused beam with variable colour temperature range adjustment from (3000K) to (6000K) and also dimmable via the Smart App and hand held remote. A range of finish colours available.

Product Code	Voltage (V)	Wattage (W)	Power Factor	Luminous Flux (Lm)	Beam Angle	Cutout size (mm)
DL48COB-APP-10W	240V AC	10W	>0.9	800	60	90mm
DL48COB-APP-15W	240V AC	15W	>0.9	1100	60	90mm



### DL58APP

This 10W LED halogen look downlight, is fire rated and has a variable colour temperature range adjustment from (3000K) to (6000K) and also dimmable via the Smart App and hand held remote. A range of finish colours available.

Product Code	Voltage (V)	Wattage (W)	Power Factor	Luminous Flux (Lm)	Beam Angle	Cutout Size
DL58APP	240V AC	10W	>0.85	815 - 850	38/60	75mm



### DL25APP

This 10W LED downlight with interchangeable bezel can be changed to suit a range of applications, has a variable colour temperature adjustment from (3000K) to (6000K) and also dimmable via the Smart App and hand held remote. A range of finish colours available.

Product Code	Voltage (V)	Wattage (W)	Power Factor	Luminous Flux (Lm)	Beam Angle	Cutout size (mm)
DL25APP	240V AC	10W	>0.85	815 - 850	45	90mm





Smart Control  
Life made easier

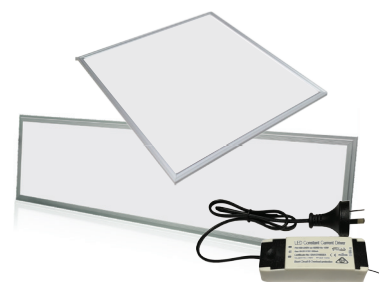


## ECO1 SMART CONTROL DEVICES

### PANEL LIGHTS

PL3APP panel light are ideal for office lighting applications with variable colour temperature control from (3000K) to (6000K) and also dimmable via the Smart App and hand held remote. Available in white and silver finish

Product Code	Voltage (V)	Wattage (W)	Power Factor	Luminous Flux (Lm)	Beam Angle	Size (mm)
PL3x12APP-40W	240V AC	40W	> 80	3600	120	295x1195
PL6x6APP-40W	240V AC	40W	> 80	3600	120	595x595
PL6x12APP-85W	240V AC	85W	> 80	6500	120	595x1195



### SHOP LIGHTER

DL27APP shop lights are ideal for a range of shop lighting applications with variable colour temperature adjustment from (3000K) to (6000K) and also dimming via the Smart App and hand held remote, makes it a very versatile product custom finish colours available.

Product Code	Voltage (V)	Wattage (W)	Power Factor	Luminous Flux (Lm)	Beam Angle	Size (mm)
DL27APP-38W	240V AC	38W	> 80	3800	120	220x130
DL27APP-45W	240V AC	45W	> 80	4500	120	220x130



### DL57APP

High output commercial downlight has a variable colour temperature range adjustment from (3000K) to (6000K) and also dimmable via the Smart App and hand held remote. A range of finish colours available.

Product Code	Voltage (V)	Wattage (W)	Power Factor	Luminous Flux (Lm)	Beam Angle	Cutout Size
DL57APP-20W	240V AC	20W	> 80	3600	120	200-220
DL57PP-28W	240V AC	28W	> 80	3600	120	200-220
DL57APP-38W	240V AC	38W	> 80	3800	120	200-220



### SLIMLINE DOWNLIGHTS

Slimline LED Recessed light fittings many sizes available has variable colour temperature range adjustment from (3000K) to (6000K) and also dimmable via the Smart App and hand held remote. A range of finish colours available.

Product Code	Voltage (V)	Wattage (W)	Luminous Flux (Lm)	CRI	Beam Angle	Cutout size (mm)
RP18APP	240V AC	10W	880-930	> 80	120	160mm
RP20APP	240V AC	13W	1185-1210	> 80	120	180mm
RP24APP	240V AC	16W	1390-1440	> 80	120	220mm
RP30APP	240V AC	18W	1590-1620	> 80	120	280mm

