



Smart Control
Life made easier



SMART LIGHT INSTRUCTIONS

How to setup Smart Lighting Products

- 1) Select the "ADD" button on the spaces screen (see Figure 1).
- 2) Select "Lighting Control" add on the device list (see Figure 2).
- 3) Give your device a name and the space location you want it assigned to (see Figure 3).
- 4) Open the lighting control on the spaces screen and click on the match button (see Figure 4).
- 5) Turn the light off then on again from the power switch, click on the match button, the light will flash to confirm a successful match.
- 6) Repeat this process for all 4 switches on the remote or as required (see Figure 5).
- 7) The black screen also indicates the match was successful (see Figure 6).

Features - Lights can be programmed to operate individually or in groups.

- Lights operate on a Mesh system so if the lights are no more than 12M apart the lights can still communicate with the gateway from very long distances the lights well beyond the reach of the wifi signal.
- All of the smart Lighting products can be controlled from the manual wall switch without the remote control or mobile APP (See details on the Hand held remote control instruction sheet).

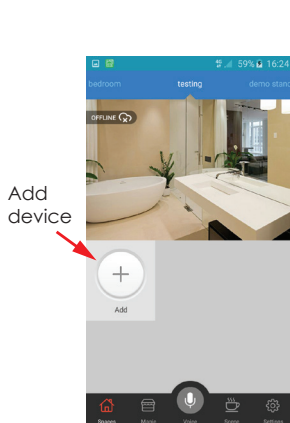


Figure 1

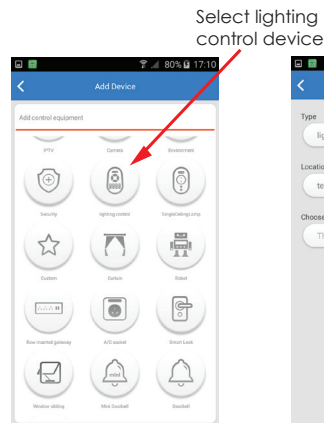


Figure 2

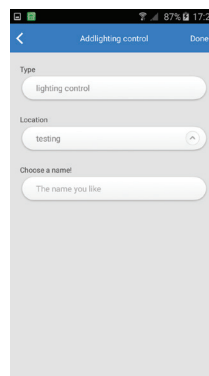


Figure 3

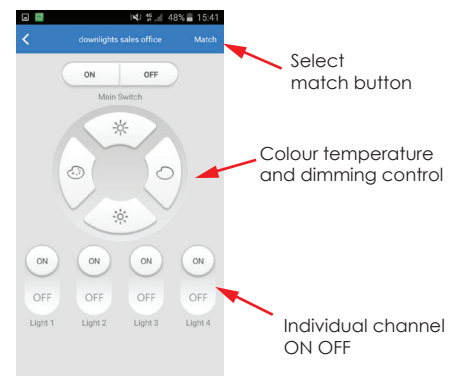


Figure 4

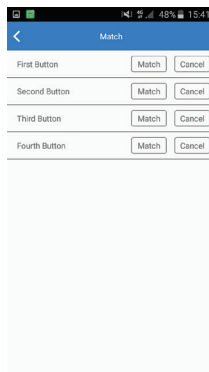


Figure 5

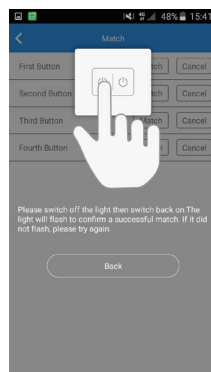


Figure 6



Also see
Hand held
remote
controller
setup
procedure
specifications