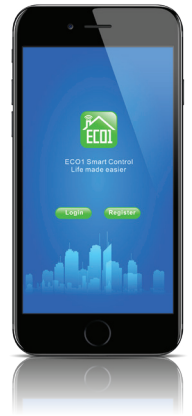




Smart Control
Life made easier

IR CONTROLLER INSTRUCTIONS



How to setup IR Controlled devices

- 1) Add device from home screen (see Figure 1).
- 2) Select device from the add device screen (see Figure 2.)
- 3) Select location and enter device name (See figure 3 & 4).
- 4) To set up from list select device type from drop down box selector and click the test function to find the most appropriate device (see Figure 5 & 6).
- 5) To setup manually, click the manual button, point the equipment remote at the IR Controller and press and hold the remote button to be learned, then press the corresponding button on the Smart App device screen (see Figure 5).
- 6) When the button on the Smart App is learned a screen will appear saying that the button is learned in (see Figure 7).
- 7) If the button has not been learned in the not learned in screen will appear (see Figure 8) re-try the process until all the buttons have been learned in to the Smart App.

Frequency	2.4GHz IEEE 802.15.4
Input Voltage	5V DC
Operating Temperature	-20° C-85° C
Operating Humidity	≤ 80%
Detection Angle	360 degree
Sensor	Infrared

****NOTE :** The process is the same for learning all devices. This example uses the air conditioning controller remote to explain the process of learning in. You can also create custom remotes if required by selecting the custom button on the add devices screen.

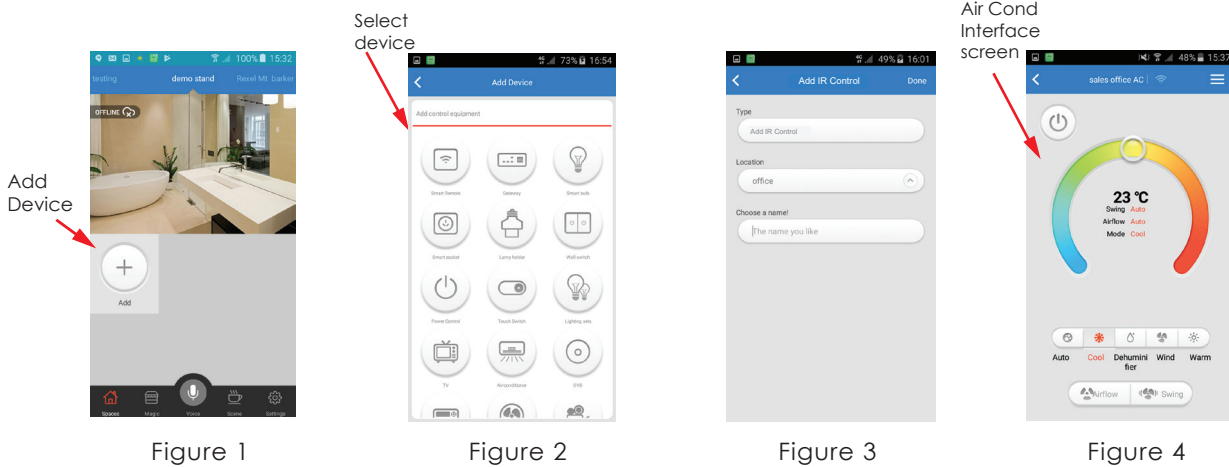


Figure 1

Figure 2

Figure 3

Figure 4

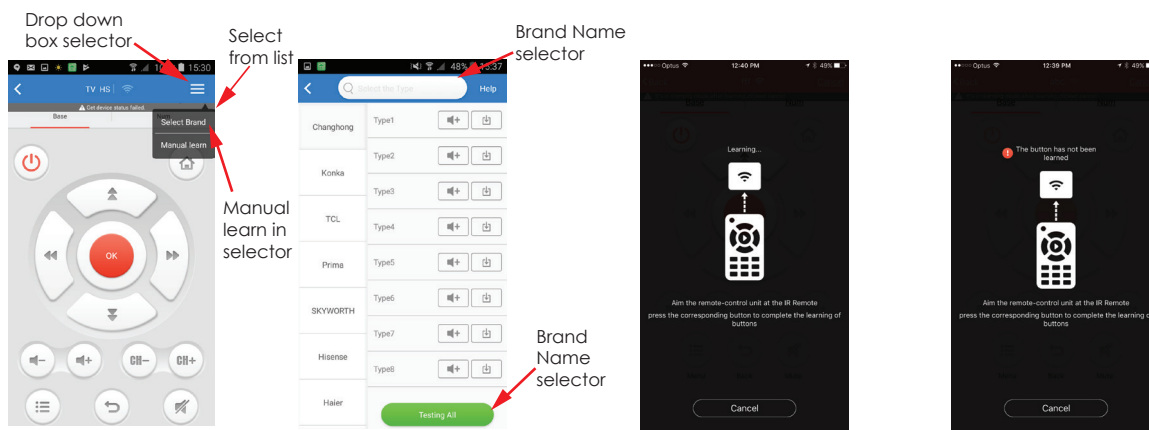


Figure 5

Figure 6

Figure 7

Figure 8