



Smart Control  
Life made easier



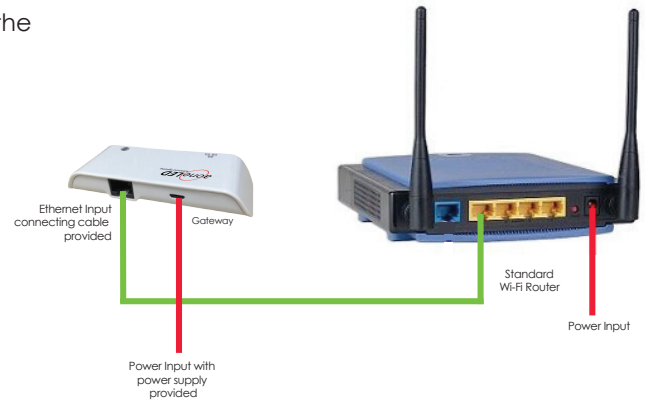
# GATEWAY INSTRUCTIONS

## How to setup Gateway devices

- 1) Connect the gateway to your WiFi router with the power supply and ethernet cable provided as per diagram below.
- 2) When power is applied you will see the power light on and the data light will flash at first then stop. This means the router has connected to the Gateway.
- 2) Select device from the add device screen (see Figure 1).
- 3) Select the gateway device from the list (See figure 2).
- 4) Scan the QR code on the back of the gateway or it can also be setup by clicking in the Search device button (see Figure 3).
- 5) Enter the gateway name and click next (see Figure 4).
- 7) Select the rooms you want the gateway to control with the tick mark and then click the "connect now" button and the gateway will bind all the devices in the selected spaces screens (see Figure 5).
- 8) Devices are now set up and ready to use.

Frequency	2.4GHz IEEE 802.15.4
Input voltage	5V DC
Operating temperature	-20° C-85° C
Operating Humidity	≤ 80%

- local** The Gateway status displays the following information : means the mobile phone is connected to the gateway via the local WiFi connection.
- cloud** means the gateway is connecting to the mobile phone via the cloud.
- offline** means the gateway is not connected to the mobile phone. If gateway is offline you will see the ethernet light flashing.
- nogw** To reset turn off the power for 10 seconds and then power on. means there is no gateway setup for the device you are trying to operate go through the gateway setup procedure again.



Gateway controller connection diagram

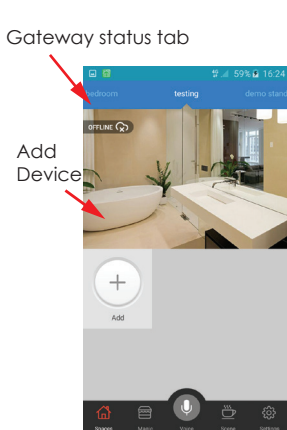


Figure 1

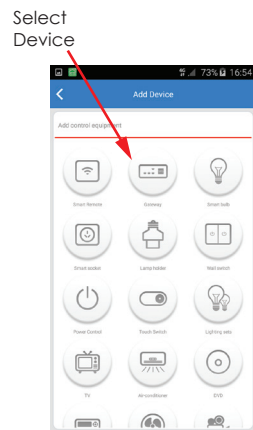


Figure 2

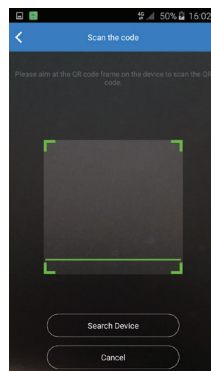


Figure 3

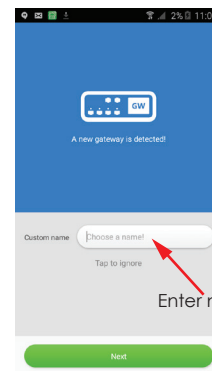


Figure 4

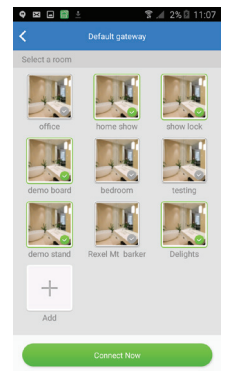


Figure 5