

RUBY 7 Piece Clip In

HOW TO GUIDE



Before



After

RUBY 7 Piece Clip In

HOW TO GUIDE



1. Section the hair on the Occipital Bone to create the first row



2. Handy Hint: Spray a little hairspray to add grip to your hair



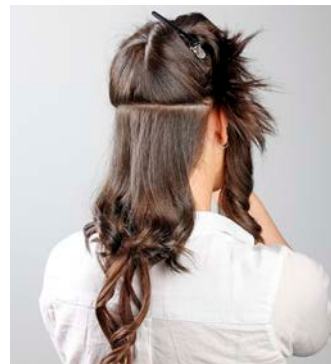
3. Handy Hint: Tease-Back Comb your hair for extra strong grip of the snap clips



4. Place the first piece and snap close the clip



5. Position the two 2" pieces side-by-side in the first row



6. Section the second row



7. Select the 8" 3 clip piece and insert



8. Handy Hint: Always clip the middle snap clip first, this will centre and keep your piece level



9. Prepare and clip in the 3rd row with a 5 clip 10" piece



10. Prepare the side sections. Clip in 1 clip 2" piece



11. Apply to both sides



12. Prepare the 4th row



13. Apply the second 5 Clip 10" piece into the 4th row



14. Finish back view, luscious, long and full of body!



15. Finish front view – Spectacular!