



2018/2019 Choice Catalog



Choice

**noun \ chôis **

: something that is preferred or preferable to others; the best part of something; carefully selected. *

Zippo Choice

: a handpicked collection of Zippo lighters, selected from hundreds of concepts submitted by our best designers, guaranteed to appeal to even the most refined tastes.

An incredible selection of unique lighters – new finishes, new engraving combinations – sets high expectations for record-setting sales from this Zippo Choice. This selection of lighters goes beyond the limits of ordinary to truly Choice distinction!

Order from Zippo Choice now through
July 31, 2019.

* www.dictionary.com

Zippo releases the #1 globally requested design to an eager worldwide audience as part of the Zippo in Film Tribute series. Bearing the medal and cross of St. Benedict, and surrounded by scrolling flourishes that envelop the entire surface of the lighter using Zippo's 360° MultiCut engraving process on an Armor Antique Brass finish lighter, this design was inspired by the Zippo lighter that had a silver screen role as a tool to help stave off Hell on Earth.

Reverse



29719
Armor™
Antique Brass
MultiCut
\$125.00



Packaging

Zippo unveils the newly enhanced Photo Imaging process, offering even more intensely detailed and realistic designs.

The process creates an image that is reminiscent of early black-and-white photography, with designs emerging in silvery tones, set against the finishes of the colorful High Polish lighter family, which lends an unreal level of depth to each design.



29717

High Polish Purple
Photo Image
\$37.95

AVAILABLE
WORLDWIDE



© 2018 Anne Stokes www.annestokes.com
Licensed by www.artaskagency.com



29704

High Polish Blue
Photo Image
\$33.95



29665

Armor™

High Polish Black Ice®

Deep Carve

\$49.95



29666

Armor™

High Polish Black Ice®

Deep Carve / Color Image

\$54.95



29718

Black Matte
Emblem Attached
\$44.95

AVAILABLE
WORLDWIDE

Capture the world of James Bond

with this new 007 emblem design on a black matte lighter. The signature James Bond 007 logo is revealed in brushed chrome, set against a field of tone-on-tone embossed 007 logos.

007™ © 1962 Danjaq, LLC and United Artists Corporation.
007™ is a trademark of Danjaq, LLC. 2018 © EON Productions Limited and Danjaq, LLC. All Rights Reserved.

The glorious Guinness HARP, symbol of the world-renowned brewer and its homeland, is featured as an emblem design for the first time on a Zippo lighter. The warm golden-colored harp stands out on a black matte finish, complimenting the color-imaged Guinness logo on the lid.



29669

Armor™
High Polish Chrome
Deep Carve
Epoxy Inlay / Crystal Attached
\$69.95

Adorned with Swarovski® crystals

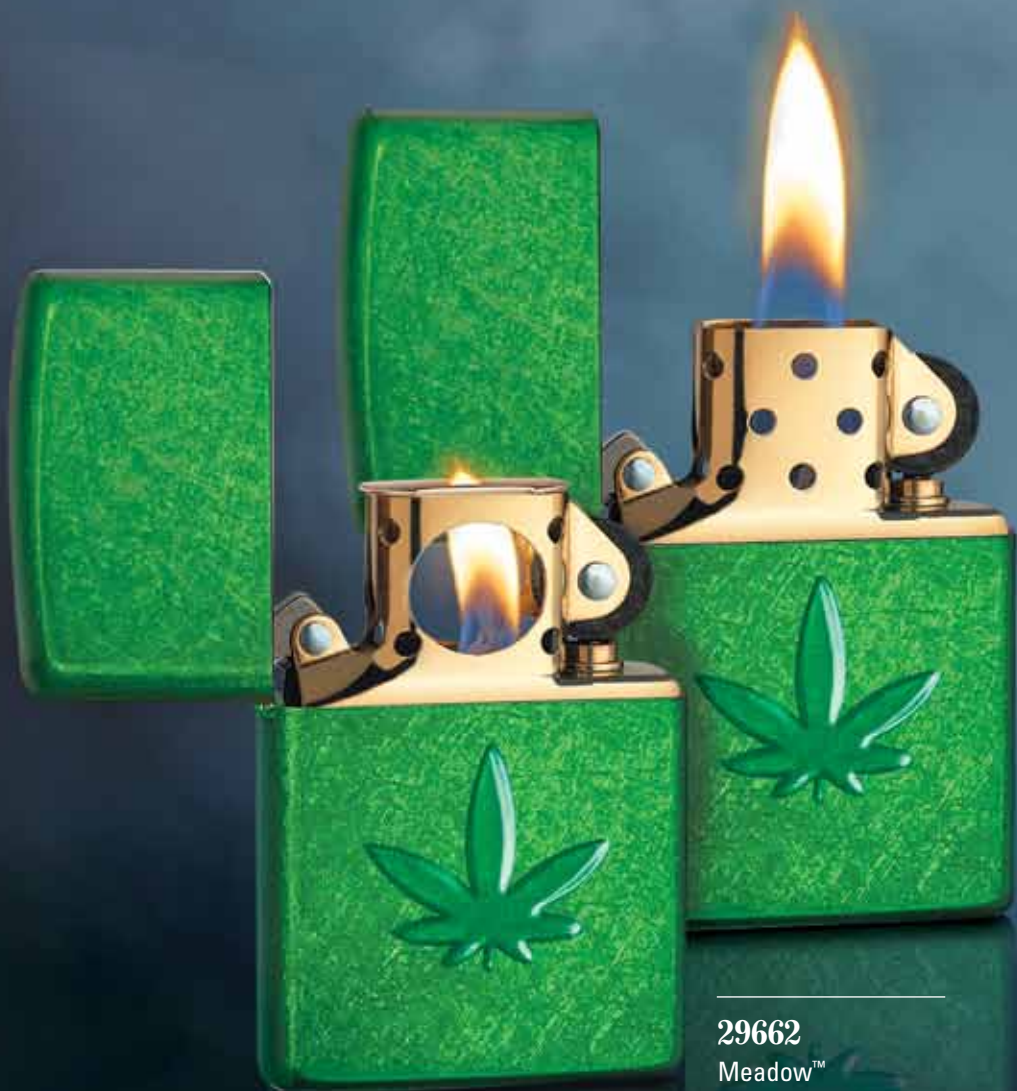


29676

Black Matte
Color Image / Emblem Attached
\$40.95

AVAILABLE IN SELECTED
COUNTRIES, RESTRICTIONS MAY
APPLY FOR GUINNESS.

The GUINNESS word and associated logos are
trademarks of Guinness & Co. and are used
under license.



29673

Meadow™
Stamped
Brass Pipe Insert
\$31.95

29662

Meadow™
Stamped
Brass Regular Insert
\$29.95



29735

Black Matte
Texture Print
\$33.95

NEW PROCESS

It's not an emblem, but it certainly could be mistaken for one. Zippo's Texture Printing process brings designs to life with vivid coloring and irresistible 3D texturing, durably adhered to a matte color lighter. This black matte lighter is home to a dragon enveloped in flames that radiate from a vintage 1950's style Zippo logo.

This harmonious MultiCut design set

on an Armor Antique Silver finish lighter features the Tree of Life, connecting every living thing, past, present, and future to the Earth, and the Flower of Life, one of the earliest examples of sacred geometry, representing the eternal link between space and time. Luxury MultiCut packaging reveals how the Art Nouveau-inspired corner elements wrap onto the sides of the lighter.



Reverse

29670

Armor™
Antique Silver
MultiCut
\$90.00



Reverse

**Traditional Celtic artwork
adorns this Armor lighter.**

The Zippo MultiCut engraving process wraps the design around the lighter, from the ornate Celtic cross on the front to Celtic knot design on the back, each detail enhanced by the Antique Silver Plate finish. Luxury packaging allows greater viewing of MultiCut design details, letting this premium design stand out in a crowd.

29667

Armor™
Antique Silver
MultiCut
\$90.00



Reverse

29674

Armor™

High Polish Chrome

MultiCut

\$80.00

Riveted and riveting, the crown jewel of the Choice collection is an Armor High Polish Chrome with 360° MultiCut engraving and a clean industrial design. The Zippo flame adorns the side of the lighter and is filled with a translucent red epoxy. Luxury MultiCut packaging highlights the wrapped design.



Reverse

29672

Armor™

High Polish Chrome
MultiCut / Epoxy Inlay

\$90.00



29733

Black Ice®

Laser Engrave / Fancy Fill

\$35.95

Laser precision takes on a new dimension

with the introduction of the Laser Fancy Fill design process. Zippo artists meticulously render each line in the design's pattern, using a new laser engraving method to fill in the design, down to the last detail. In this introductory design, a spider rests delicately on her web with thousands of strands captured on a Black Ice finish lighter.

Layers of texture envelop this Armor High Polish Gold Plate lighter.

Zippo's MultiCut engraving process produces an elegant pattern of diamonds and radiant lines, with the finishing touch of a translucent red epoxy-filled diamond shape set into the side of the lighter. A gold plated insert compliments and completes the high-end look and Luxury MultiCut packaging highlights the wrapped design.



Reverse

29671

Armor™

High Polish Gold Plate

MultiCut / Epoxy Inlay

\$140.00



29663

Iron Stone™

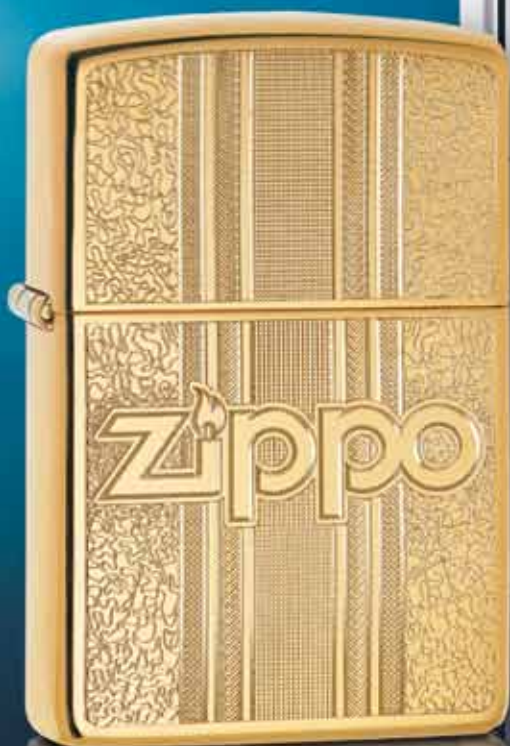
Emblem Attached

\$39.95

Emblems have long been one of the most popular

and enduring ways of decorating a Zippo windproof lighter, ever since George G. Blaisdell authorized the production of the first Metallique emblem Zippo lighters in 1934. Emblems add another dimension to the windproof lighter, transforming a white matte lighter into a miniature refrigerator look-alike in the early 1950s, or offering up an awesome surprise, like the fire erupting from a dragon's mouth on a recent model.

Wrapped emblems make their long anticipated return to the world of Zippo with the debut of this vintage-inspired emblem. The horizontal banding wraps onto the sides of the lighter, and features a shiny-red enamel filled Zippo flame. Affixed to an Iron Stone finish windproof lighter, this emblem looks absolutely monumental.



29677
High Polish Brass
Auto Engrave
\$29.95



29678
High Polish Chrome
Color Image / Auto Engrave
\$31.95



29661

Red Matte

Laser Engrave / Auto Engrave

\$28.95

Last, but not least, in the 12 animals of the Chinese Zodiac, the pig represents prosperity, diligence and generosity. This Year of the Pig lighter is the fourth collectible in Zippo's series of Chinese zodiac lighters. Set on a red matte lighter, the lucky color that represents happiness and good fortune, the Chinese characters and zodiac animal are revealed in the brass through laser and rotary engraving. Combining these two engraving processes allows two different golden brass tones and textures to shine through on the lighter's surface.

Introducing a stately new finish, the brass diagonal weave. Directional brushing brings new depth and tones to the brass lighter. Tumbled finished sides complete the look. Paired with a gold-flashed insert in either classic or pipe-lighter style for heightened sophistication and functionality.



29668

High Polish Brass
Lustre Etch / Color Image
\$39.95

AVAILABLE WORLDWIDE

BY **Mazzi**

Claudio Mazzi designs and trademarks are used under license from Kreo di Mazzi, & C Snc. To Zippo Manufacturing Company. All Mazzi designs are protected by copyright.



29675

Brass
Diagonal Weave
\$32.95



29702

Slim®

High Polish Chrome

Fusion

\$29.95

Zippo's Fusion process adorns a Slim windproof lighter for the first time. Swirls of color surround Zippo flames, with breaks to allow the High Polish Chrome finish to show through, giving this lighter a stained-glass look.



29679

High Polish Chrome
Lustre Etch / Color Image
\$33.95



29680

1941 Replica
Black Ice®
Laser Engrave / Auto Engrave
\$36.95



3165

Lighter Fluid 12 oz.
(Retail-\$6.20 each)
Shipping carton of 24.

\$148.80 carton

(No. 3365 carton
of 12, \$74.40)

Price subject to change without notice.

3141

Lighter Fluid 4 oz.
(Retail-\$3.00 each)
Shipping carton of 24.

\$72.00 carton

(No. 3341 carton
of 12, \$36.00)

Price subject to change without notice.



2406C

6 Flint Plastic
Dispenser
(Retail: \$.80 each)
Packed 24 dispensers
per display box.

\$19.20 carton



2425

Wick
(Retail: \$.80 each)
Individually carded,
punched for pegboard
use. Packed 24 cards
per counter display box.

\$19.20 carton

2406N

6 Flint Plastic Dispenser
(Retail: \$.80 each)
Individually carded, punched
for pegboard use. Packed 24
cards per counter display box.

\$19.20 carton



Upgrade to pipe lighter recommended. Look for this symbol next to models that would pair well with a pipe lighter insert.

Any full-size lighter may be ordered from the factory with a pipe lighter insert. Pipe lighter inserts are not sold separately, and must be fit to the lighter at the Zippo factory to ensure it meets our quality standards. When ordering, add PL to model number and \$1.50 to the retail price.



Unless otherwise stated, every Zippo windproof lighter in this catalog is packaged in the “one box,” designed to address the growing concern over the depletion of our natural resources. Both the attractive gift box and the cardboard insert are made from renewable materials and are 100% recyclable. The patented “one box” is attractive, easy to handle, and designed to display more of the lighter than ever.



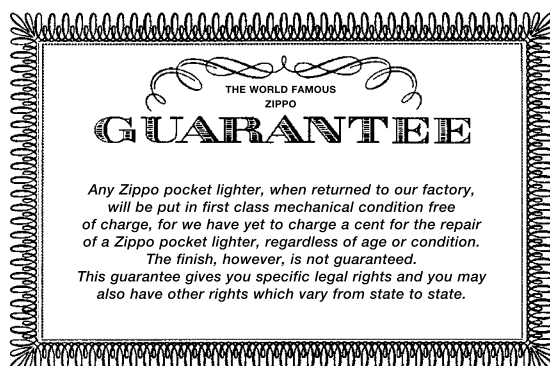
The ZLuxury box was designed especially to showcase the incredible engraving that envelopes each Armor 360° MultiCut Zippo lighter. A high-density foam insert securely holds the lighter, while mirrored wings allow a wraparound view of the design without removing the lighter from the packaging or display case. Silver, black and red foil stamped accents adorn the lid and makes for an elegant gift presentation. ZLuxury packaging comes standard with all MultiCut lighters.

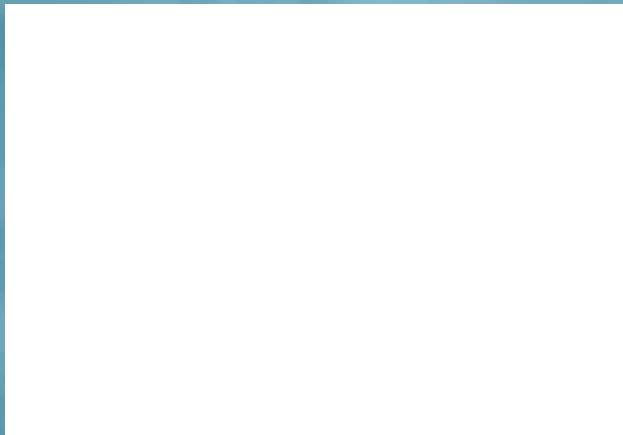
Terms and pricing are limited to authorized Zippo sales distributors and wholesalers only. Unless specified as retail pricing, this information is not intended for consumer use.

Because we are constantly improving our products, some items may not look exactly as depicted. Prices and specifications subject to change without notice. Lighters are not shown actual size.

Part Number – Page Number Cross Reference Table

Part #	Pg.	Part #	Pg.
2425	21	29673	6
3141.....	20	29674	10
3165	20	29675	17
2406C.....	21	29676	5
2406N	21	29677	15
29661	16	29678	15
29662.....	6	29679	19
29663.....	14	29680.....	19
29665.....	3	29702	18
29666.....	3	29704	2
29667	9	29717.....	2
29668.....	17	29718	4
29669.....	5	29719	1
29670	8	29733	12
29671	13	29735	7
29672	11		





©2018 Zippo Manufacturing Co.
All Rights reserved.