

1 - CLEANSE & PREPARE



PRE-CARE MICELLAR LOTION

5% Gorse Water: vegetal origin, soothing and relaxing properties
+ 3% Aquaxyl®: glucose derivative acting as moisture traps for optimum hydration.



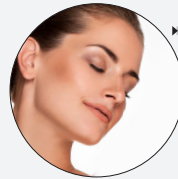
- CLEANSES AND REMOVES MAKEUP
- MOISTURIZES AND SOOTHES

Gently cleanse with soaked cotton pads then dry the skin with soft tissue. No rinsing.
To be used before all endermologie® protocols.
Lightly-scented water.

Paraben-free, phenoxyethanol-free.

RETAIL SIZE: 100 ML • PROFESSIONAL SIZE: 400 ML

2 - TARGET DEPENDING ON YOUR NEEDS AND OBJECTIVES



CLARIFY RADIANCE BRIGHTENING SERUM

6% LPG® Exclusive Anti-aging Complex: Hyaluronic Acid + 2 collagen-and elastin-boosting active ingredients.
+ 2% Vitamin C: clarifying, anti-aging, and anti-wrinkle action. + 3% Sépicalm®: clarifying and soothing amino acid.

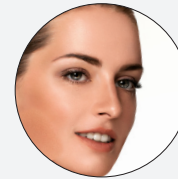


- IMPROVES RADIANCE AND CLARIFIES THE COMPLEXION
- DIMINISHES SKIN DISCOLORATION
- ANTI-WRINKLES

Apply morning and evening to prewashed face and neck.
endermologie® Glow protocol.
Orange-colored velevety texture, lightly scented.

Paraben-free, phenoxyethanol-free.

RETAIL SIZE: 30 ML • PROFESSIONAL SIZE: 120 ML



SMOOTH INTENSE HYDRATING SMOOTHING SERUM

7% high molecular weight Hyaluronic Acid: optimizes the hydrating properties of LPG® low-molecular weight hyaluronic acid-based products.
Hydrating action for softer and smoother skin. Ideal for mature skins.



- MOISTURIZING BOOSTER
- INSTANT SMOOTHING EFFECT
- DURABLY REPLENISHES FINE LINES AND WRINKLES

Apply morning and evening to prewashed face and neck.
endermologie® Skin Awakening protocol.
Smooth, fluid texture, non-scented for optimal comfort.

Paraben-free.

RETAIL SIZE: 40 ML • PROFESSIONAL SIZE: 200 ML



REGENERATE ANTI-AGING RENEWAL SERUM

22% LPG® Premium Complex: a synergy of active principles selected for their proven anti-aging efficiency and the ITD encapsulation technology (Intelligence Targeting Device) which allows the serum to precisely deliver the active ingredients at the heart of the target cell (fibroblast) in order to reactivate its metabolism.



- REGENERATES FOR OPTIMAL FIRMNESS
- ANTI-WRINKLES
- IMPROVES RADIANCE AND CLARIFIES THE COMPLEXION
- REFINES SKIN TEXTURE

Apply morning and evening to prewashed face, neck and hands.
endermologie® Cellular Stimulation protocol.
Scented pink velvety texture, enriched with micro-pearls to immediately clarify the complexion.

Paraben-free, phenoxyethanol-free.

RETAIL & PROFESSIONAL SIZE: 30 ML

3 - EYES & LIPS



TOTAL EYE CARE

6% LPG® Exclusive Anti-aging Complex: Hyaluronic Acid + 2 collagen-and elastin-boosting active ingredients.
+2% Haloxyl®: complex of anti-inflammatory and pigmentation-control peptides.



- ANTI-PUFFINESS
- ANTI-DARK CIRCLES
- ANTI-WRINKLES

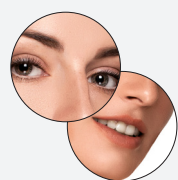
Apply morning and evening to the eye contour area using smoothing outwards gestures.

endermologie® Total Eye protocol.

Skin-colored creamy texture, lightly scented.

Paraben-free, phenoxyethanol-free.

RETAIL SIZE: 20 ML • PROFESSIONAL SIZE: 120 ML



NEW EYE & LIP CONTOUR CREAM

30% LPG® Premium Eye & Lip Complex: combination of the LPG® Cellular Regeneration Complex and specific active ingredients for the complete treatment of the eyes and lips.



- SMOOTHS FINE LINES AND WRINKLES
- LIFTS THE UPPER EYELID
- REDUCES PUFFINESS AND DARK CIRCLES
- HYDRATES AND FIRMS INTENSELY

Apply morning and evening with smoothing outwards gestures to the eye and lip contour areas with the applicator, until full penetration. Innovative metal applicator with high smoothing "ice effect" power, enables a efficient, hygienic and targeted application.

endermologie® Perfect Eyes & Lips protocol.

Rich precious texture which reveals a radiant velvety skin.

RETAIL & PROFESSIONAL SIZE: 9 ML



NEW POST-CARE EYE CONTOUR MASK

15% LPG® Premium Eye Complex: Marine collagen + Hyaluronic Acid to replenish and intensely firm the skin + Haloxyl, complex of anti-inflammatory and pigmentation-control peptides.



- SMOOTHS FINE LINES AND WRINKLES
- REPLENISHES AND FIRMS INTENSELY
- REDUCES PUFFINESS AND DARK CIRCLES

Cleanse and dry the skin, then apply the mask to the eye contour for 10 minutes. Recommended as a treatment program or whenever necessary.

endermologie® Perfect Eyes & Lips protocol.

Pre-cut fabric mask, impregnated with a rich and precious texture which reveals a radiant velvety soft skin.

RETAIL & PROFESSIONAL SIZE: SET OF 5 PAIRS

4 - CORRECT DEPENDING ON YOUR SKIN AGING PROFILE



SAGGING TENSING FIRMING CREAM

7% LPG® Exclusive Anti-aging Complex: **Hyaluronic Acid + 2 collagen-and elastin-boosting active ingredients + 4% Ovalift®**: a 100% natural skin firming extract from oat-derived sugar, also helps to fix makeup.



- IMMEDIATE LIFTING EFFECT
- FIRMS FACIAL CONTOURS
- ANTI-WRINKLES

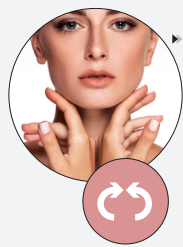
Apply morning and evening to prewashed face and neck, after the LPG® serum.

endermologie® Age-Defying Skin Toning protocol.

Rich non-greasy emulsion, lightly scented.

Paraben-free, phenoxyethanol-free.

RETAIL SIZE: 50 ML • PROFESSIONAL SIZE: 200 ML



HOLLOWING REPLENISHING FIRMING CREAM

6% LPG® Exclusive Anti-aging Complex: **Hyaluronic Acid + 2 collagen-and elastin-boosting active ingredients + 1% Voluform®**: Lipoaminoacid promoting isoleucine (targeting the cells responsible for skin plumpness and firmness).



- RESTORES VOLUMES
- REPLENISHES AND REDENSIFIES
- INSTANT ROUNDED EFFECT

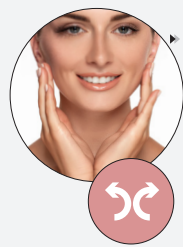
Apply morning and evening to prewashed face and neck, after the LPG® serum.

endermologie® Age-defying Replumping protocol.

Rich "foamy" cream with texturizing effect, lightly scented.

Paraben-free, phenoxyethanol-free.

RETAIL SIZE: 50 ML • PROFESSIONAL SIZE: 200 ML



THICKENING FIRMING V-SHAPING CREAM

6% LPG® Exclusive Anti-aging Complex: **Hyaluronic Acid + 2 collagen-and elastin-boosting active ingredients + 3% Adipoless®**: Canadian quinoa's extract, rich in minerals to fight adipo-genesis.



- SLIMS THE FACE AND RELEASES DOUBLE CHIN FAT
- FIRMS FACIAL CONTOURS

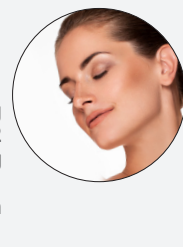
Apply morning and evening to prewashed face and neck, after the LPG® serum.

endermologie® Age-Defying Resculpting protocol

Lightly-scented fluid.

Paraben-free, phenoxyethanol-free.

RETAIL SIZE: 50 ML • PROFESSIONAL SIZE: 200 ML



GLOBAL ANTI-AGING ANTI-AGING RENEWAL CREAM

16% LPG® Premium Complex: a synergy of many active ingredients selected for their anti-aging power + ITC (Intelligence Targeting Device) technology that enables to precisely deliver the active ingredients to the target cell (fibroblast) to reactivate its metabolism + a mixture of ceramides, obtained from wheat grains for proven efficiency on the skin texture.



- NOURISHES FOR INTENSE COMFORT
- REGENERATES FOR OPTIMAL FIRMNESS
- REFINES SKIN TEXTURE
- POWERFUL ANTI-WRINKLES

Apply morning and evening on the face, neck and décolleté after applying the Anti-aging Renewal Serum.

Particularly recommended for mature skin, as a complement to the Anti-aging Renewal Serum and to the Eye & Lip Contour Cream.

Fine and melting texture.

Paraben-free, phenoxyethanol-free.

RETAIL SIZE & PROFESSIONAL SIZE: 50 ML

5 - PROTECT



CELLULAR DEFENSE ANTI-AGING CREAM SPF30

NEW

7% LPG® Antioxydant Complex: **Vitamin E** antioxidant action; anti-wrinkles and healthy complexion radiance thanks to **carotenoid**; unified complexion with **salicylic acid**; **Soft focus** action to instantaneously hide imperfections.

- HEALTHY COMPLEXION EFFECT
- ANTI-WRINKLES AND ANTI-FREE RADICALS
- UVA/UVB SPF30 PROTECTION

Apply evenly to the face, neck and décolleté on bare skin or over makeup.

During sun exposure, renew application every 2 hours. Non-greasy UVA and UVB protection, quick penetration. Fits all skin types.

Avoid contact with the eyes.

Use as the last step of your LPG protocol. Can be used alone.

Ultra-light velvety texture, dry touch sensation, non-shiny, lightly scented.

Paraben-free, phenoxyethanol-free.

RETAIL SIZE & PROFESSIONAL SIZE: 30 ML

6 - REGENERATE



POST-CARE COLLAGEN MASK

18% anti-aging, clarifying and antioxidant active ingredients: **vegetal collagen** (anti-aging) + **hyaluronic acid** (hydration & wrinkle control) + **licorice extract** (clarifying) + **aloe vera** (deep hydration) + **tocopherol** (anti-oxidant) + **centella asiatica** (powerful cell regenerating booster, promoting collagen synthesis).



- REGENERATES AND SOOTHES
- SMOOTHS, HYDRATES & CLARIFIES

Twice a week, apply to the entire face for 15 minutes.

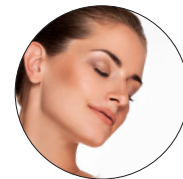
As an option in all endermologie® protocols.

Two 100% natural precut bio-cellulose membranes.

Paraben-free.

RETAIL SIZE: 30GR SINGLE DOSE
PROFESSIONAL SIZE: BOX OF 10 MASKS

7 - ENHANCE



14-DAY LPG® EXPRESS RADIANCE & ANTI-AGING CONCENTRATE

A unique combination of ingredients that provides the skin with all the necessary resources to preserve its vitality and firmness: **Myrobalan, Astragalus, Coenzyme Q10, Hyaluronic Acid, Marine collagen hydrolysate, Vitamin E, Selenium, Carot juice, Orange flavour.**



- PROTECTS CELLS AGAINST THE AGING PROCESS
- CONTRIBUTES TO SUPPORTING NATURAL DEFENSES
- ANTIOXIDANT PROPERTIES
- HEALTHY-LOOKING COMPLEXION
- SOLAR PREPARER

Take one dose every morning, pure or diluted, for 14 days. Shake well before opening with a single pressure.

To be used as part of a well-balanced diet and a healthy lifestyle.

Do not take in between meals, not recommended for children, adolescents and pregnant or breastfeeding women.

RETAIL SIZE: BOX OF 14 READY-TO-DRINK DOSES

