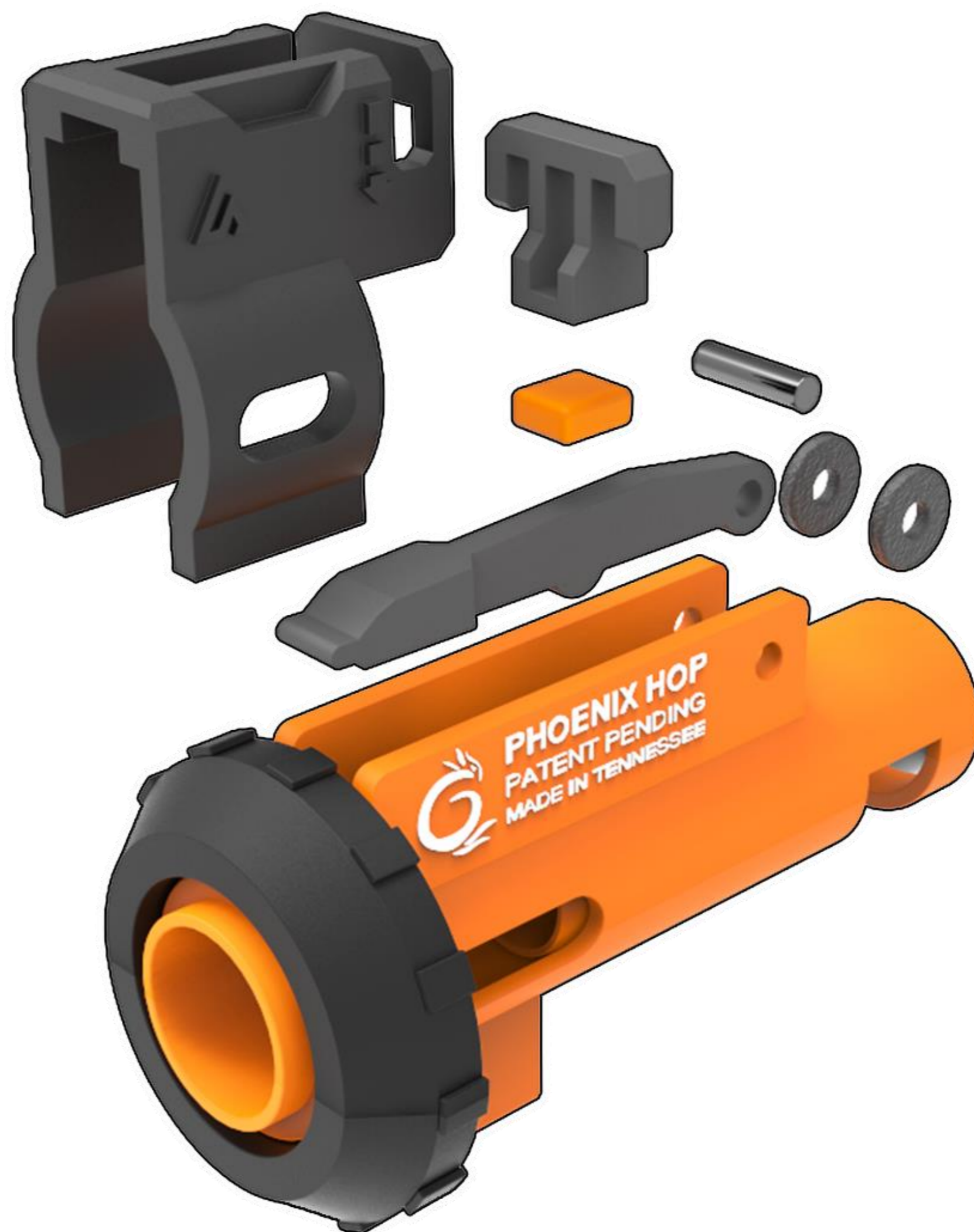


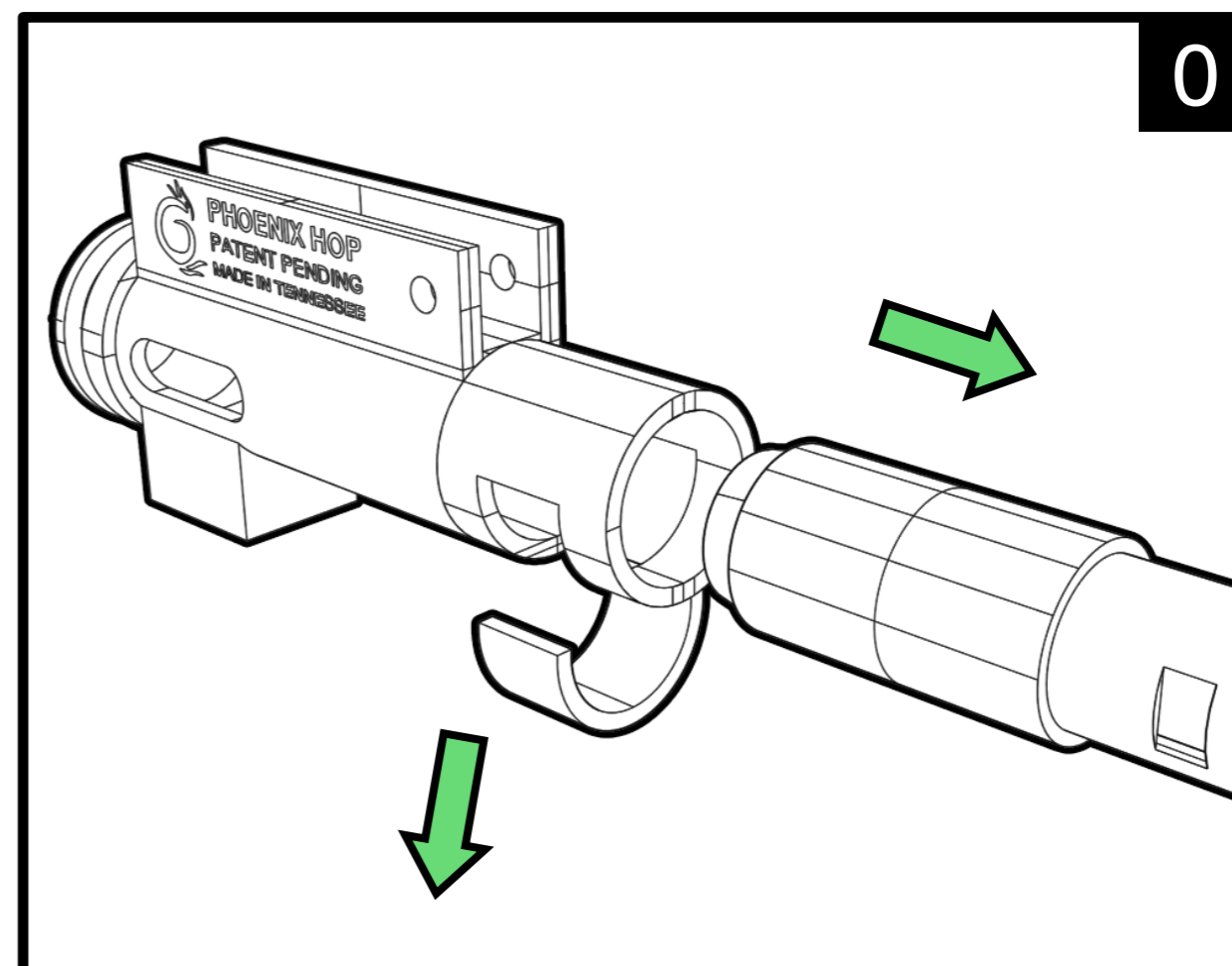
# Installation Manual

Airtech TDC Rotary Converter Kit: MTW Wolverine  
Phoenix and Stock Hop-up Chamber



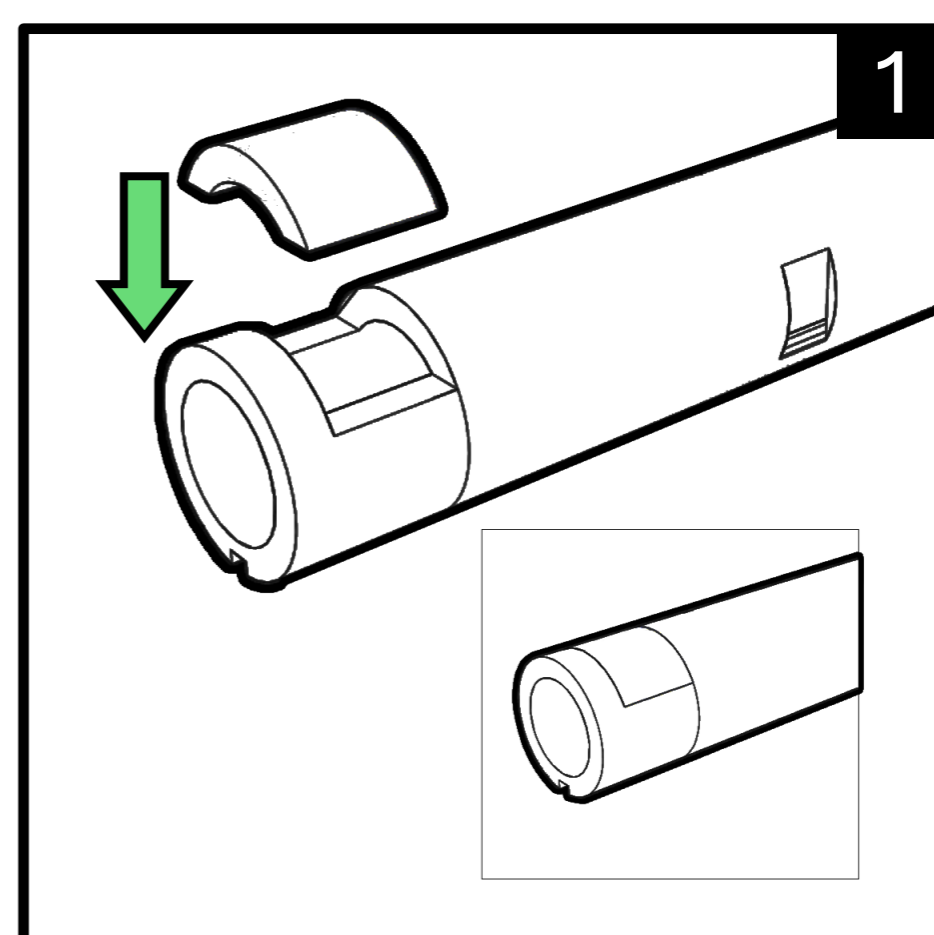
**Step by Step Installation – Please Follow Each Step Precisely**

**0. Start by removing the hop-up chamber from the rifle.** Strip down all the components so that it I only the hop up chamber that remains.



**1. Install your chosen R-hop patch into the inner barrel –** if you have pre-installed R-hop barrel already, you can skip this step. Flat-hop and normal bucking's will also function.

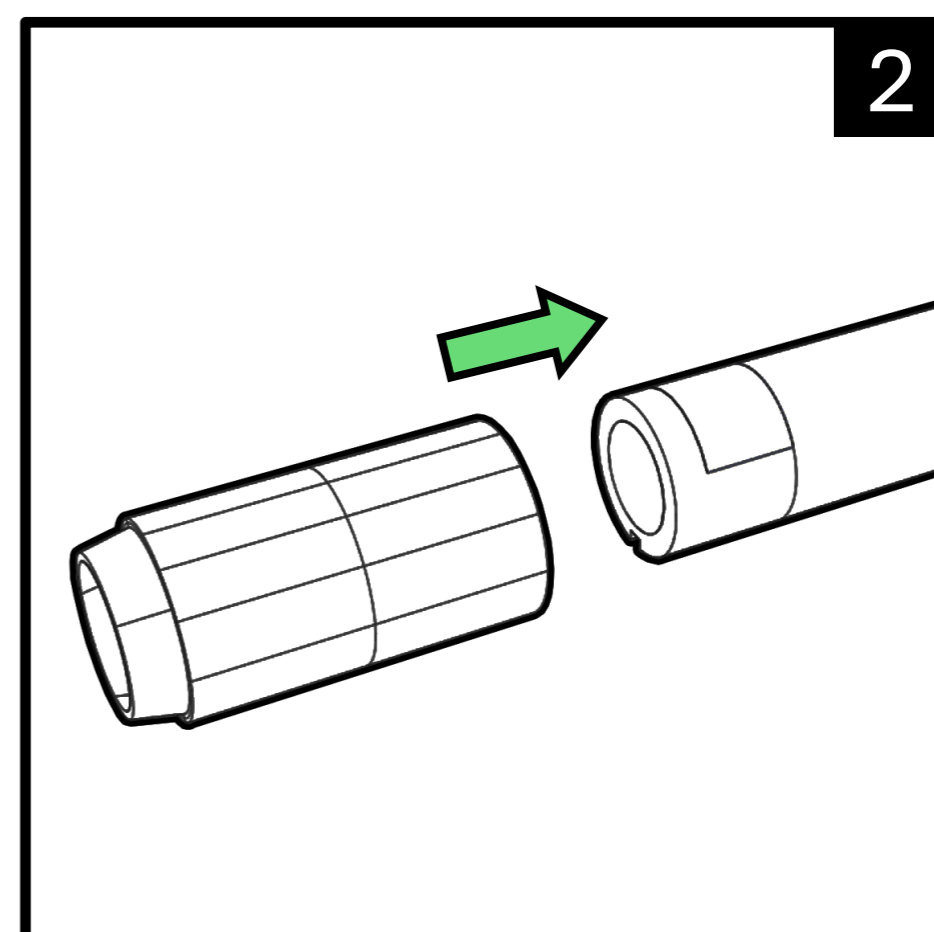
For R-hop patches we recommended brands like Psionic, Elvish and Silent Sniper. Drop-in buckings, including Maple leaf macaroon and Tru-hop can be used too.



**2. Insert the inner barrel into the bucking.**

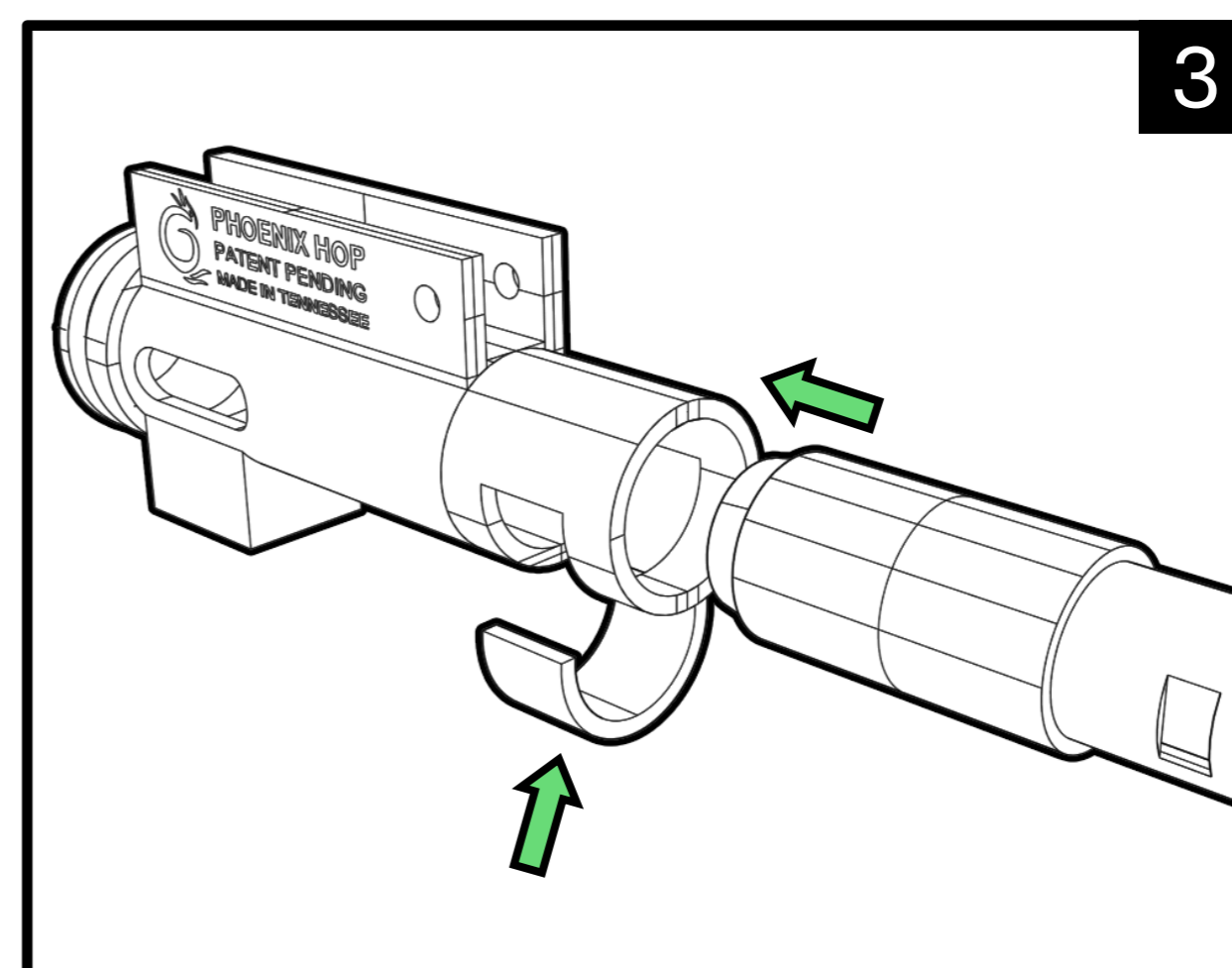
R-HOP Patch: Ensure that is it a mound less bucking type – you can modify yourself from a stock bucking.

R-Hop Buckings: Brands like Maple Leaf Macaroon, Tru-hop or TNT have R-hop already installed. Simple insert the inner barrel into the bucking



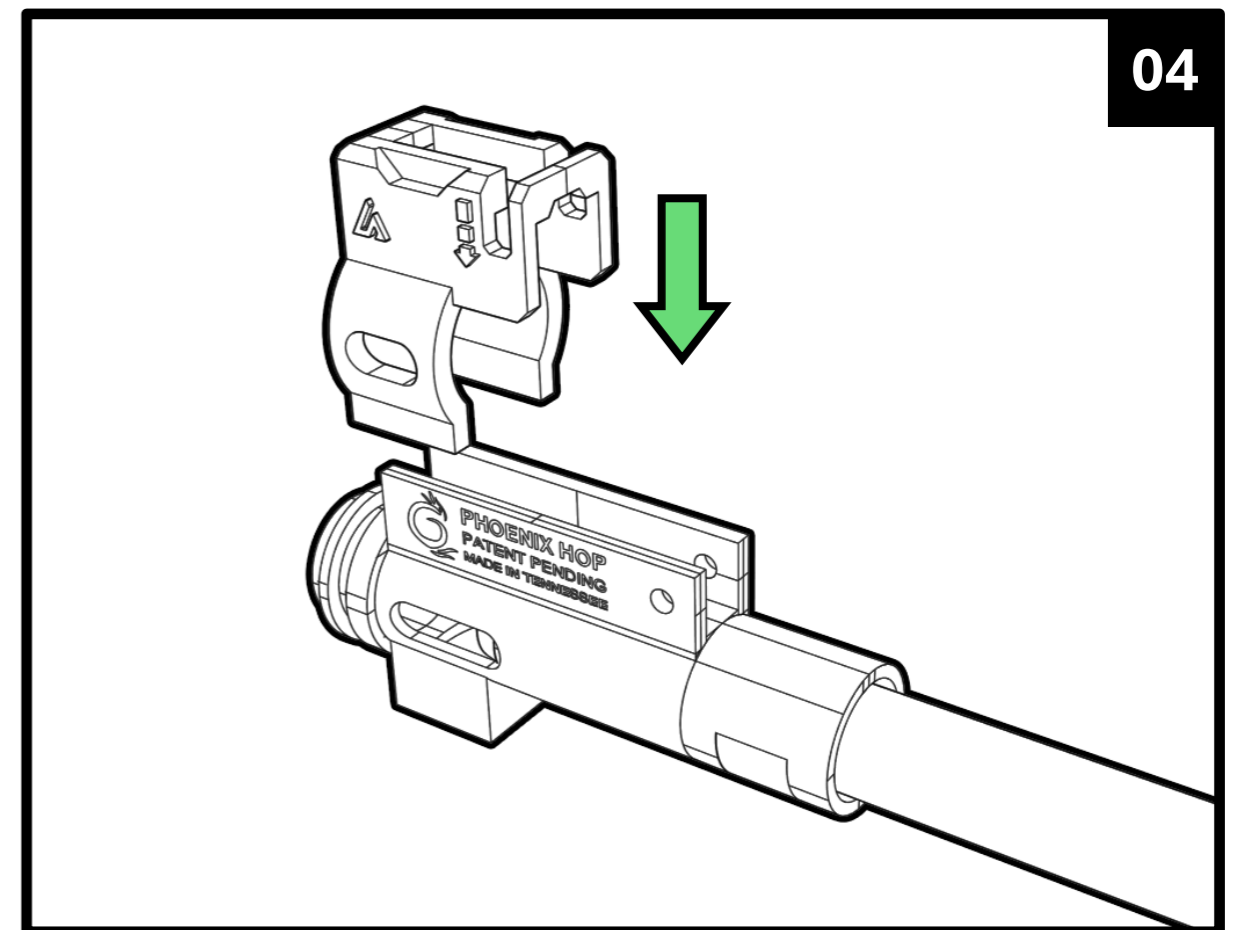
**3. First insert the inner barrel/ bucking into the hop-up chamber.**

Next Insert C-clip to lock the inner barrel. It also keeps your inner barrel centred correctly.



**Step by Step Installation – Please Follow Each Step Precisely**

**4. Install the front bracket of the TDC kit** onto the front of the hop up unit. It will slide in and will get tighter to ensure it is locked properly and for stability

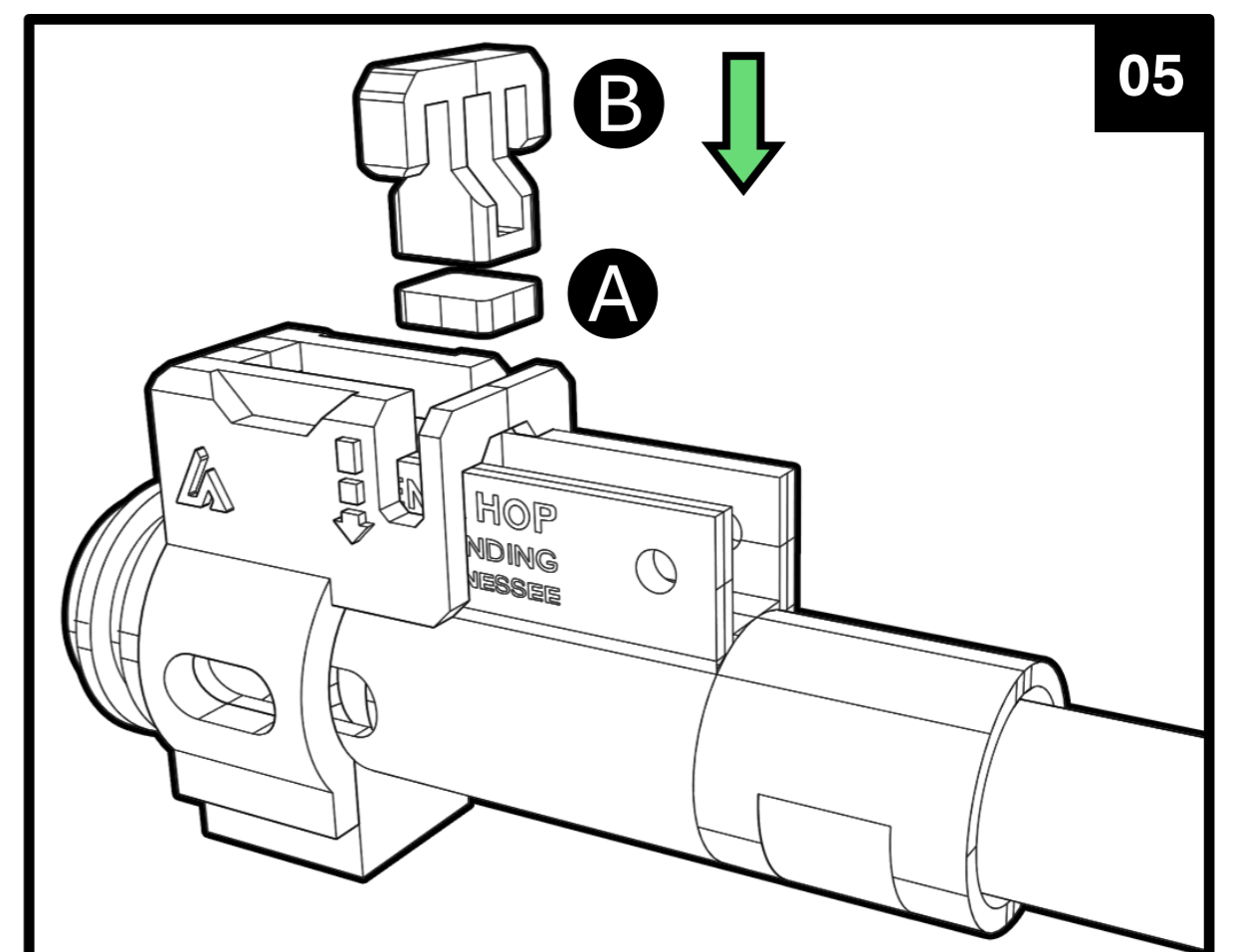


**5.A Installing the M-nub.**

Peel the 3M film from the top of the M-nub and apply some silicone grease on the bottom and place the M-nub into hop up window inside the chamber.

**B. Installing the Trolley.**

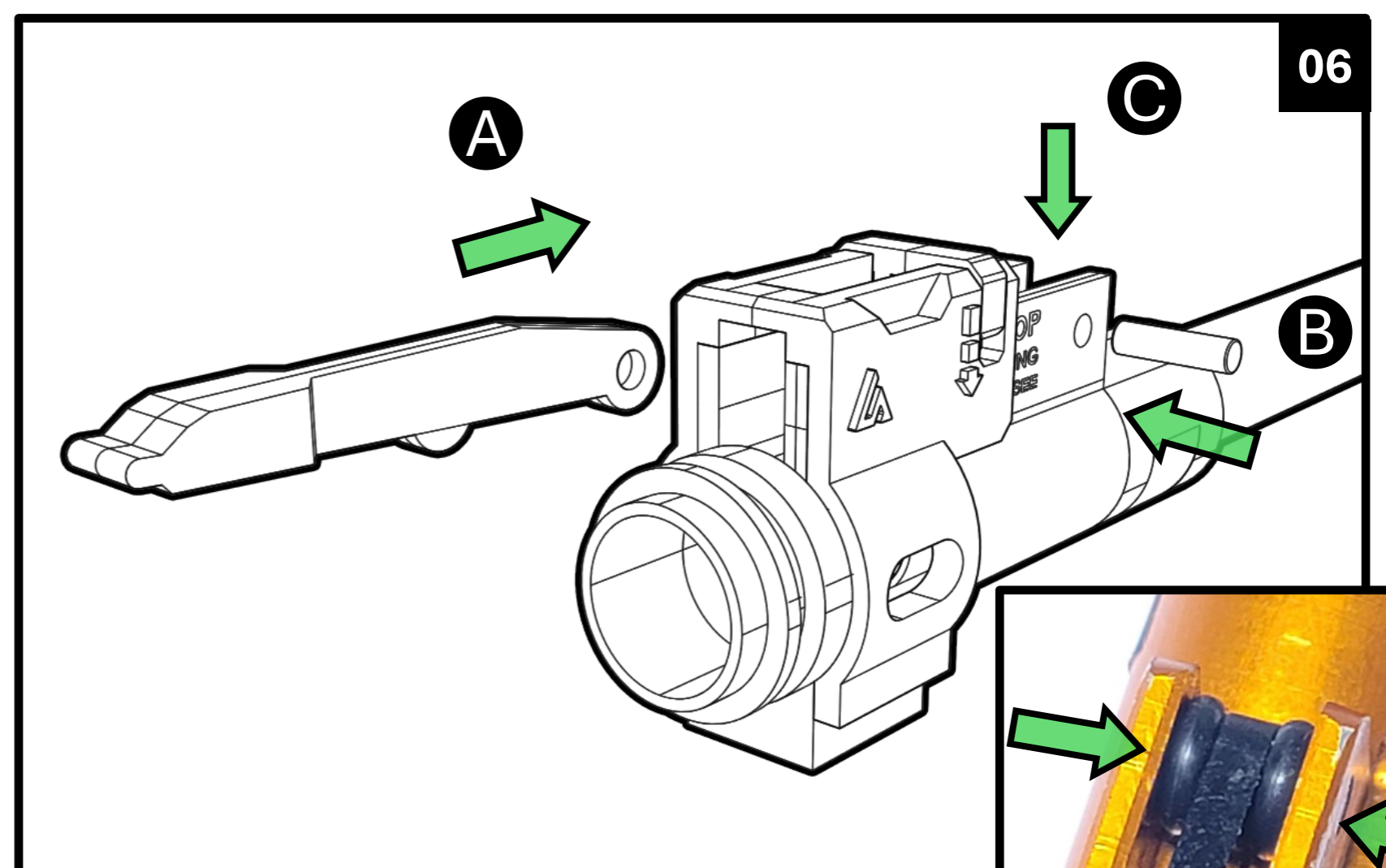
Align the trolley and insert it into the slot behind the front bracket. The foot of the trolley will connect the M-nubs adhesive side. Push the trolley to ensure it can slide up and down easily. If not, apply some silicone grease on the sides for a smoother operation.



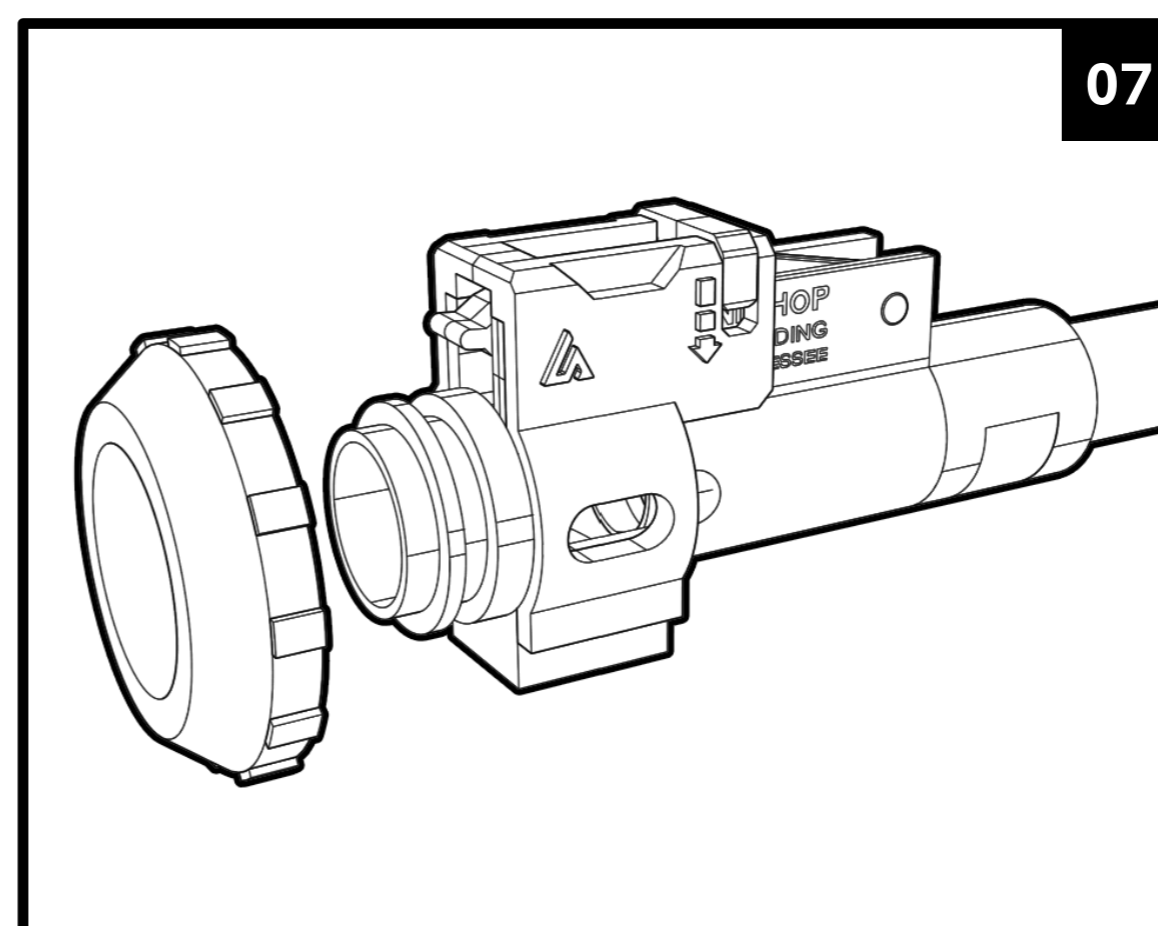
**6. A. Install the hop arm from the back** and through the middle of the trolley

**B. Insert the pin but not fully though.**

**You will need to place a (C) mini silicone O-ring** in between the hop chamber and the arm on both sides to keep the arm balanced.



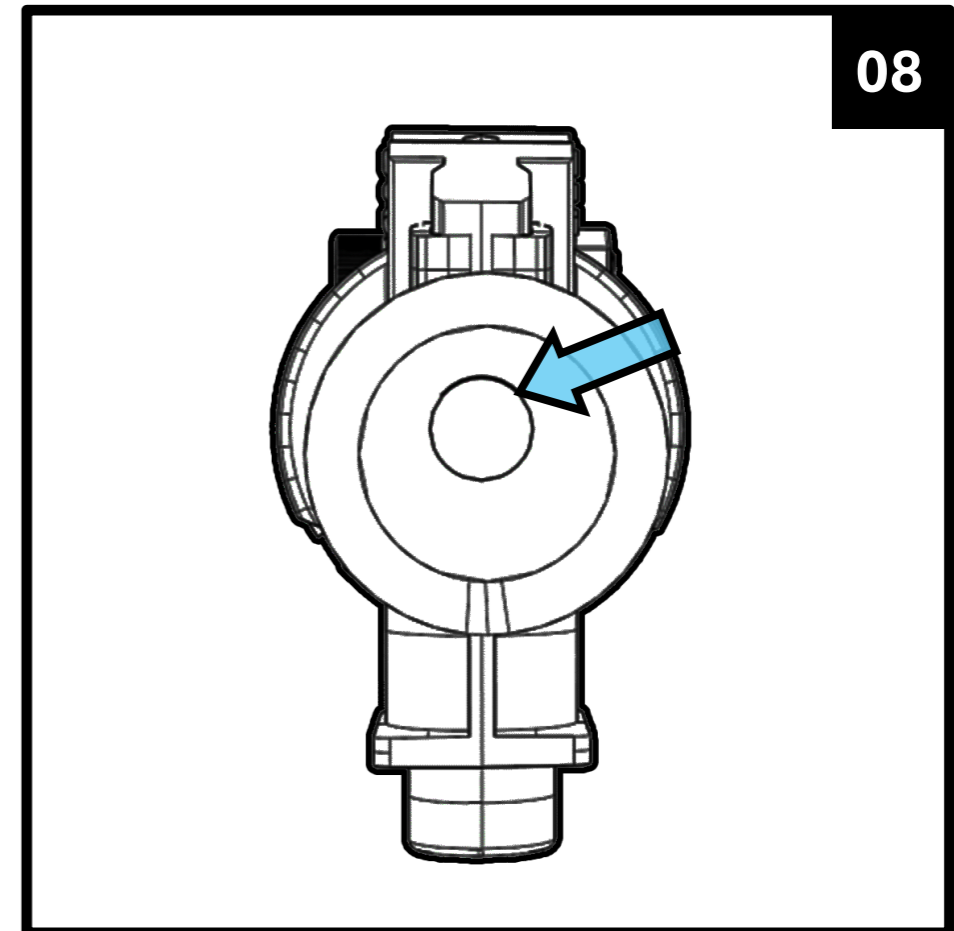
**7. Install the adjustment Dial** back onto the hop chamber. Ensure the hop is set to zero.



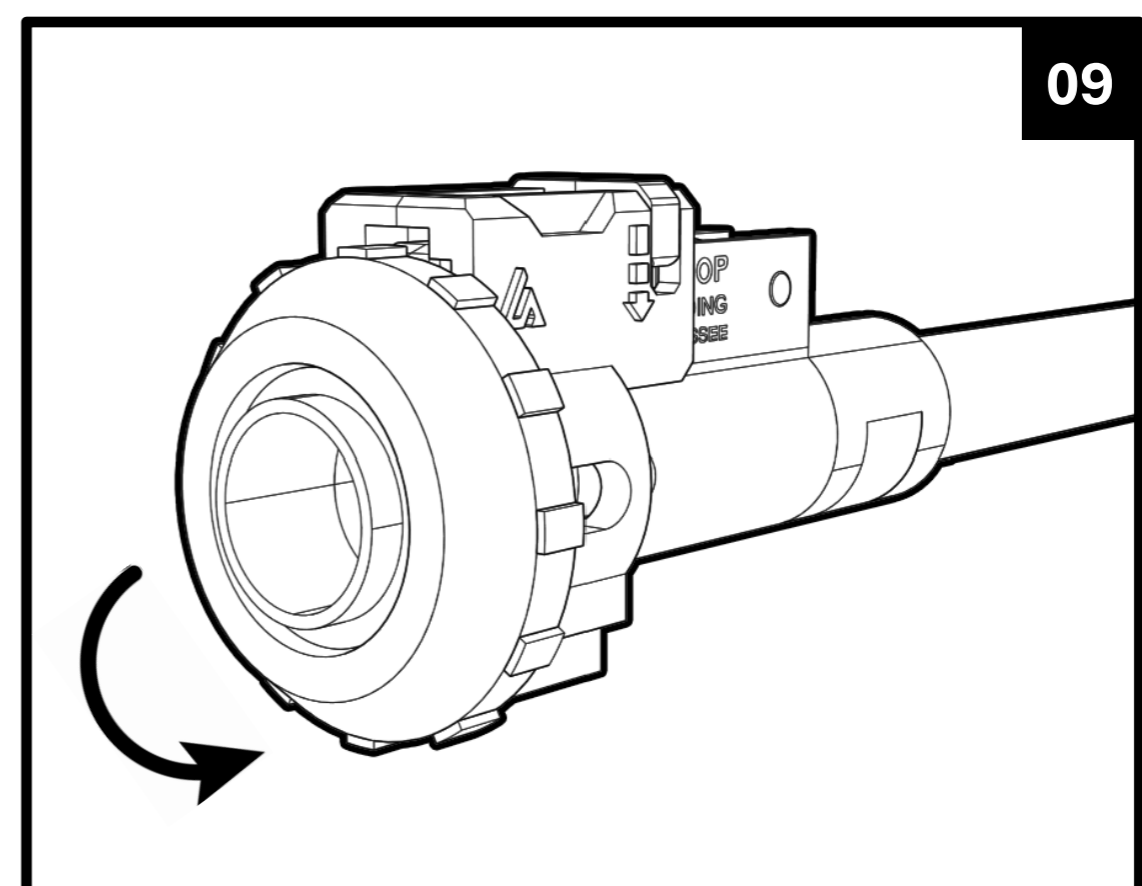
**Step by Step Installation – Please Follow Each Step Precisely**

**8. Take a look inside the inner barrel from the front.** With the hop-up at zero (neutral) you should be able to see right through.

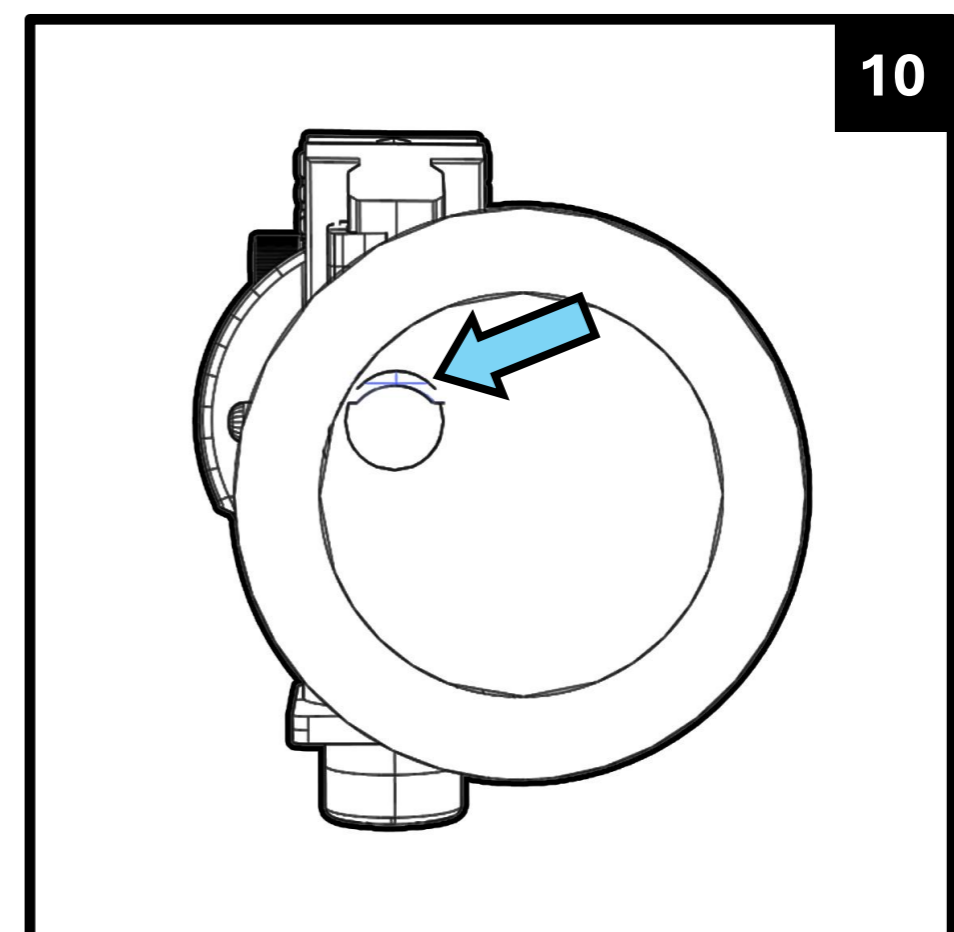
If you see there is hop protruding downwards, there may be a need to sand down the M-nub until you reach the desired outcome. This will depend on the system of inner barrel vs bucking vs R-hop patch used. See the troubleshooting part of our website for more information or contact us.



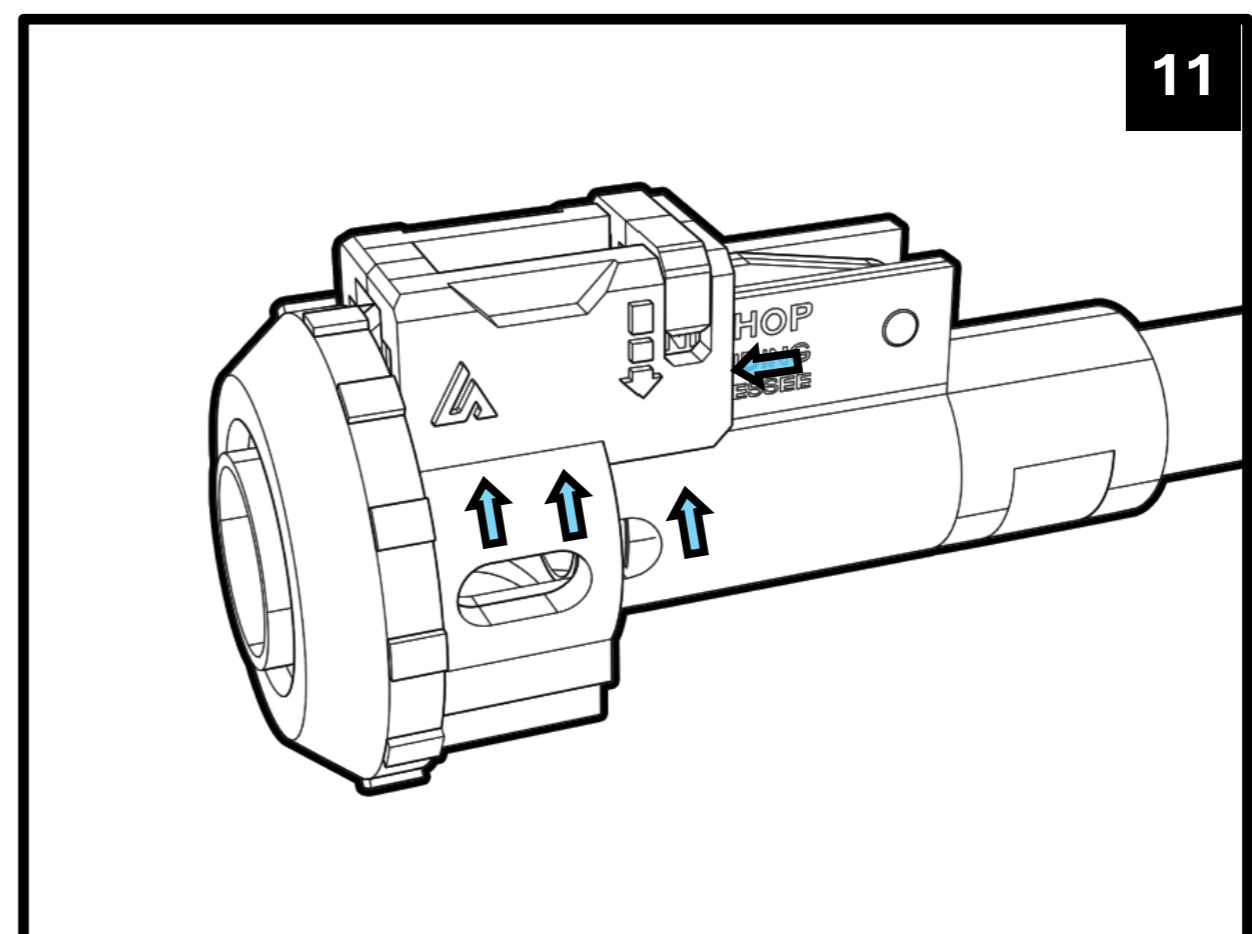
**9. Dial the hop-up wheel fully** to test that there are hop being applied.



**10. Peek into the inner barrel again and you should be able to see the R-Hop patch protruding downwards.** That will be area that will be apply hop on the passing BB. Turn back to zero hop (neutral) after the test.



**11. Once you are happy with the set up and everything works,** you can apply a dab of Loctite glue onto the front and back brackets to ensure it doesn't budge with all the moving around during a game. The blue arrow in figure 15 recommends dabbing the Loctite on these areas for the left and right hand side of the chamber. After leave for 12-24 hours to full cure.



# Parts Modification

This section covers stage of separating and modifying the upper receiver and charging handle in order for the TDC convertor to fit.

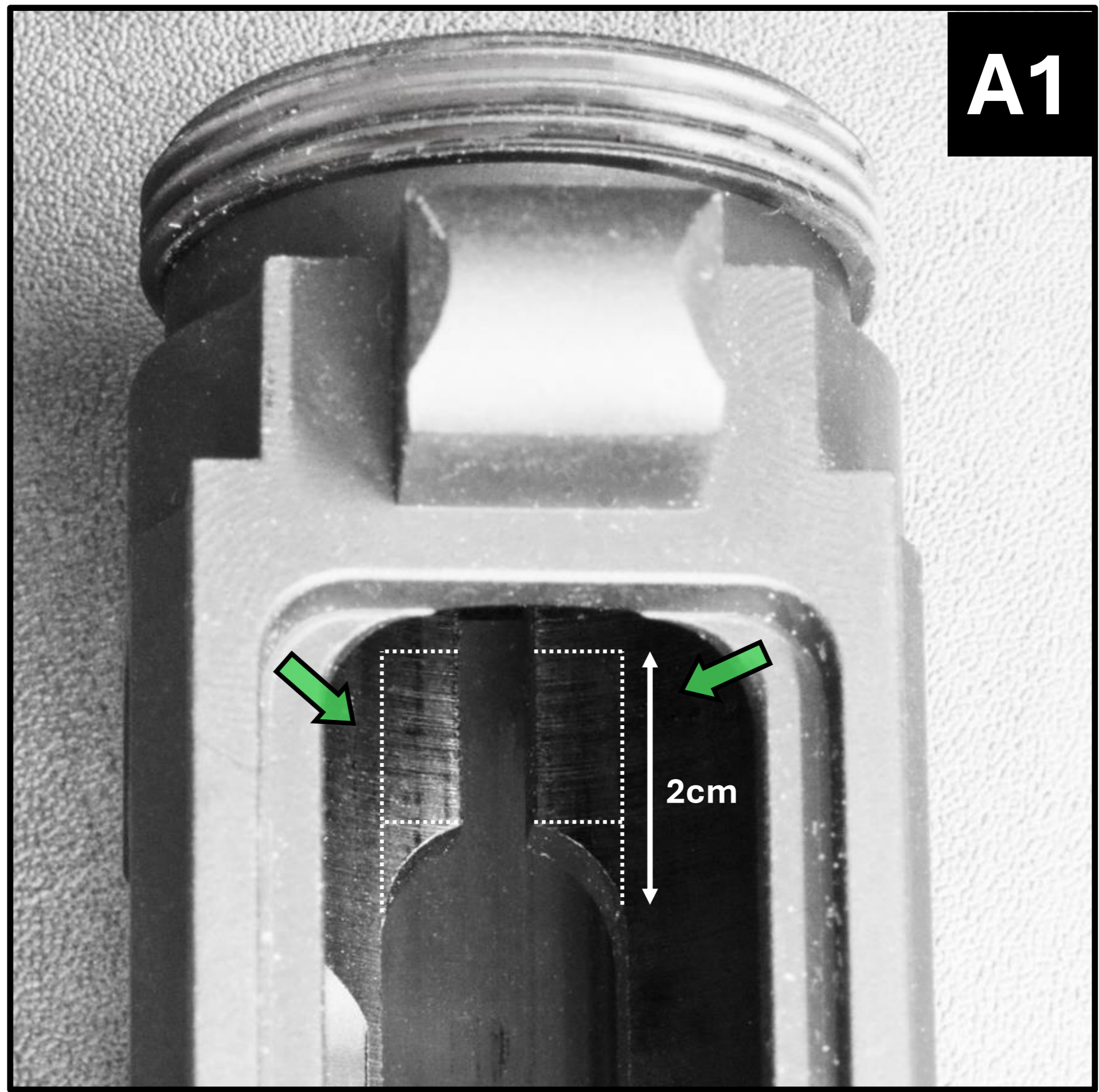
First by disassemble the gun to extract the 3x parts below that would require modification.



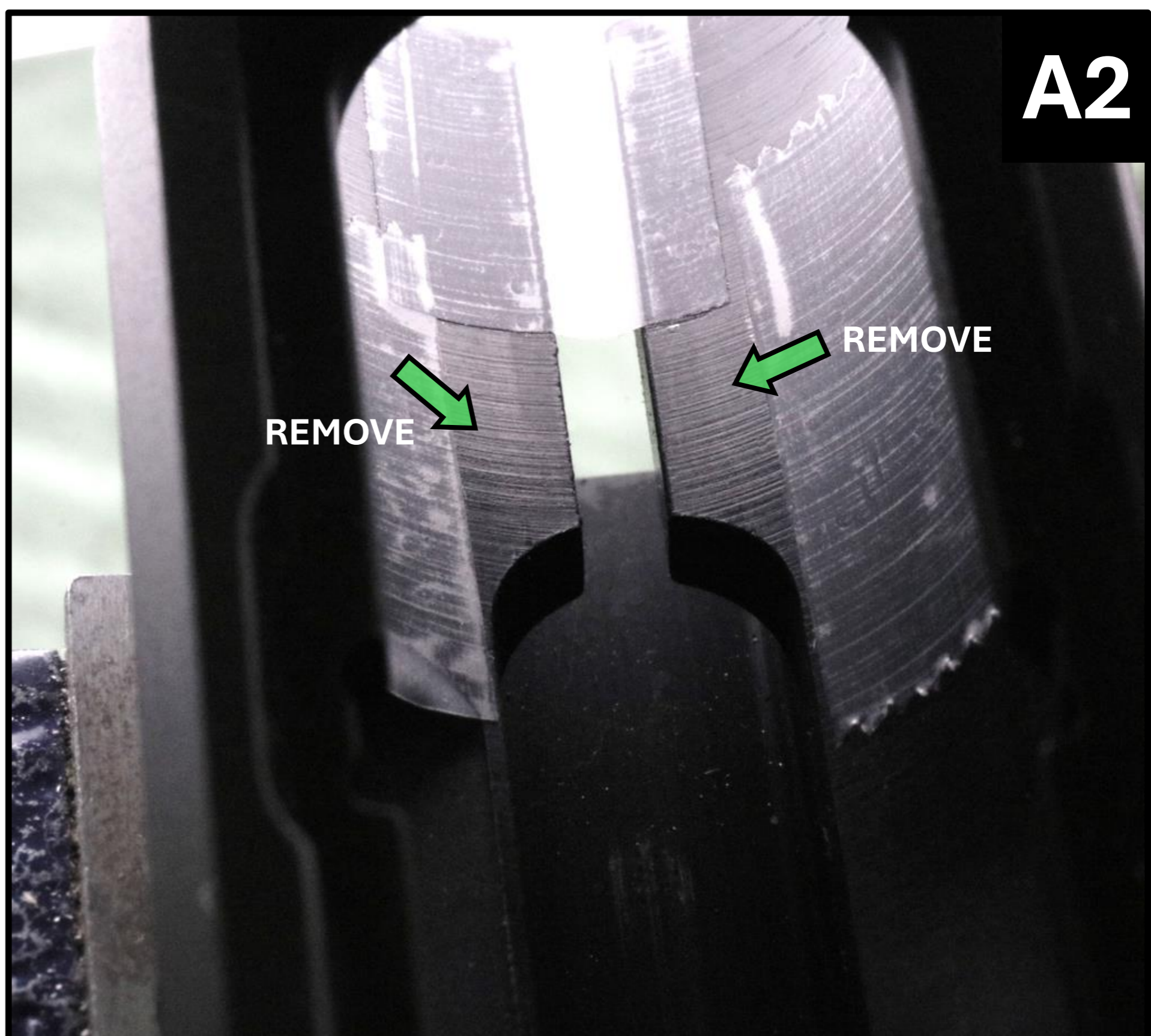
## PART A MOD - Upper Receiver

**A1.** When you turn the upper receiver upside down, you can see the curved section will need to be removed. See inside the dotted lines on both sides.

From the point of the curve remove 2cm using a power drill or dremel tool.



**A2.** Use masking tape for guiding on the part that needs to be removed.



## PART A MOD - Upper Receiver

**A3.** Demonstration: Using a dremel to slowly remove the required part.

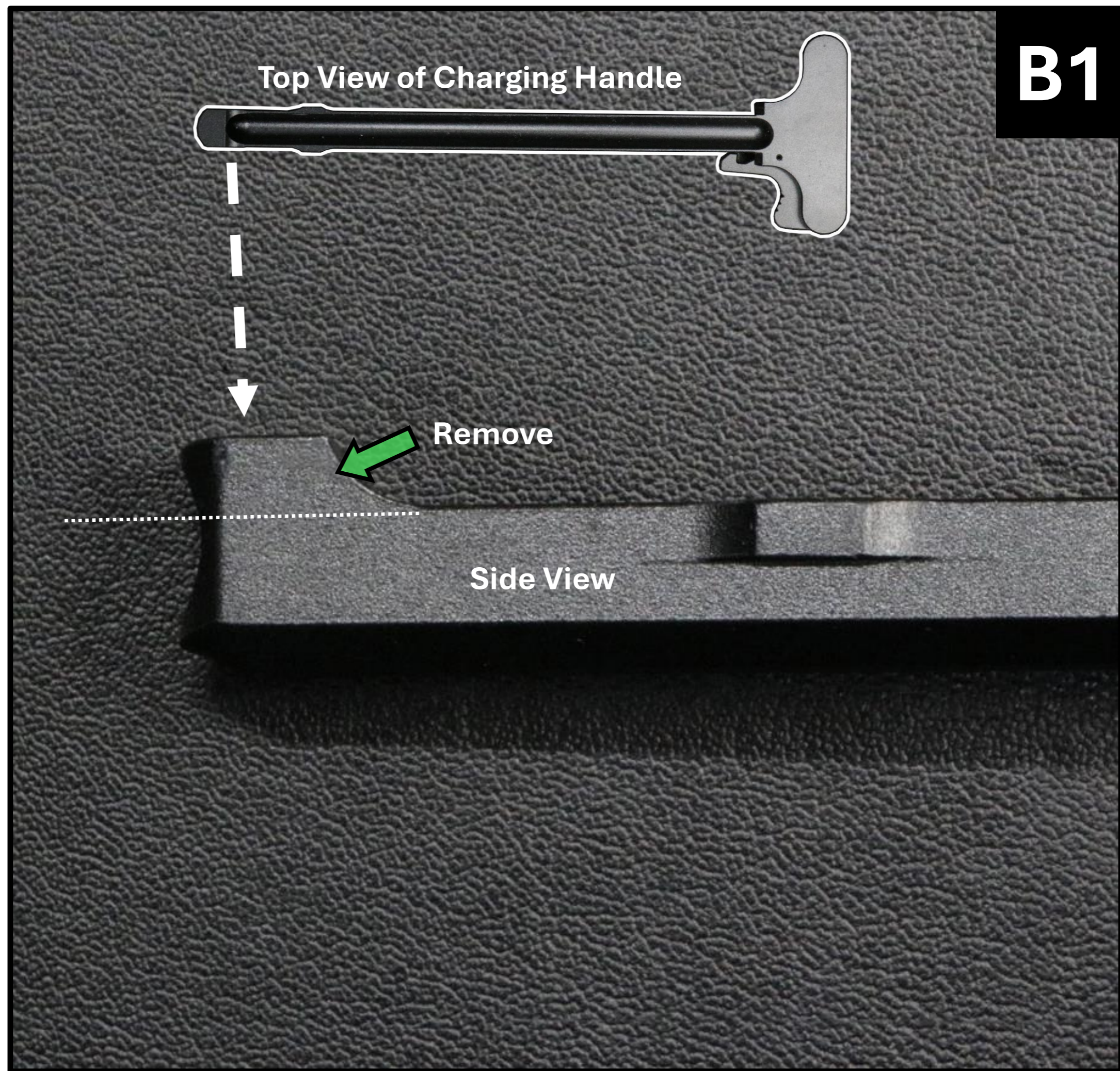


**A4.** Once removed use some sanding or sandpaper to remove any rough edges or burrs. Smoothen out the areas that's been cut.



# PART B MOD - Charging Handle

**B1.** This step will focus on removing the section from the charging handle. This will not affect the performance and functionality. Looking from the side use a pencil to draw a line for the part to be removed. You can use a dremel tool or a hacksaw to make a straight cut.



**B2.** Once removed use some sanding or sandpaper to remove any rough edges or burs. Smoothen out the areas that's been cut.

The charging handle will look flush and flat as demonstrated on figure B2





# PART C MOD - Upper Receiver

**C1**

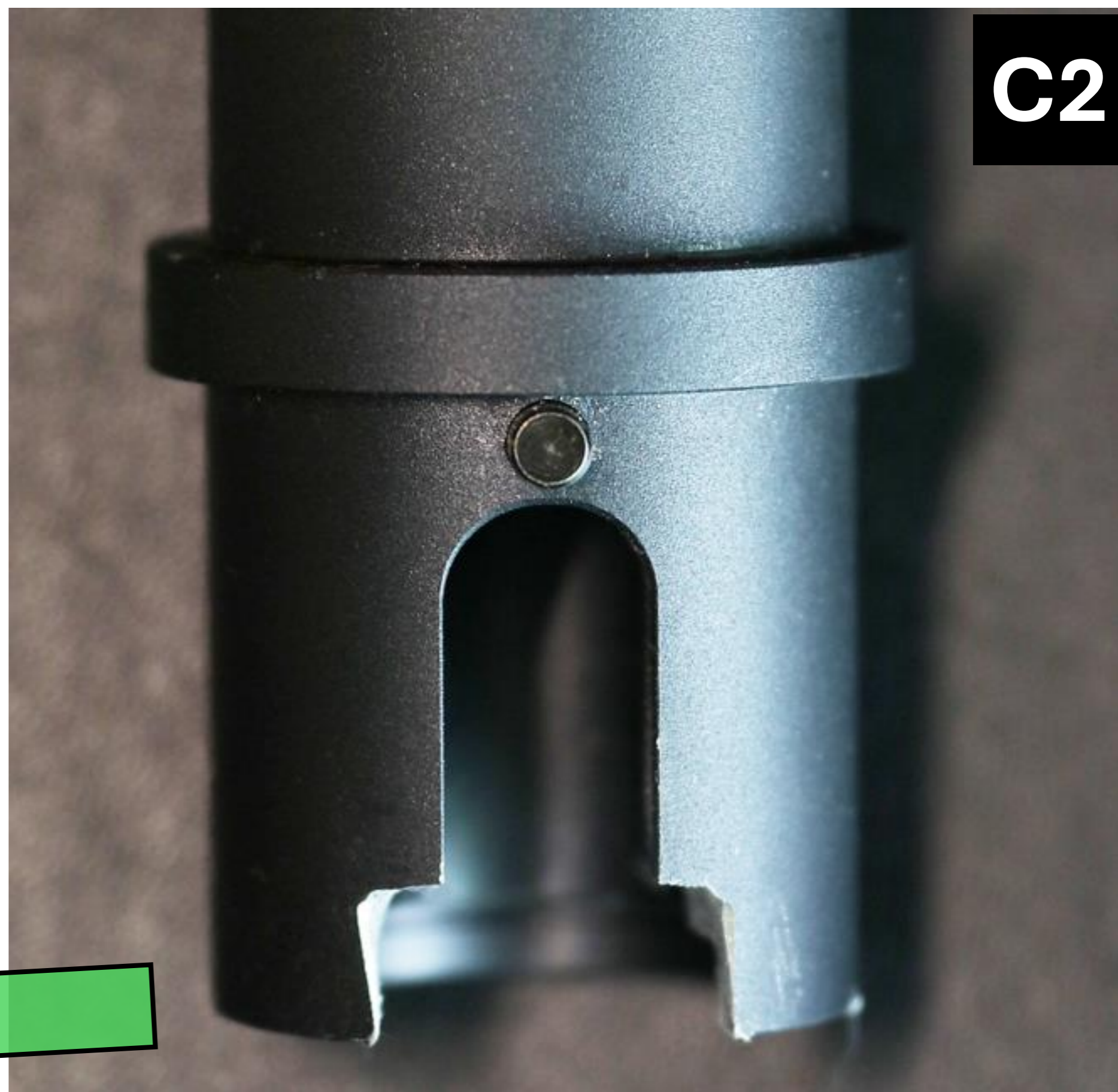
**B1.** This section remove a part from the outer barrel. Use a pencil to draw line on both sides 0.5cm outwards and then down 90 degrees. The part inside the dotted lines will need to be removed using a dremel or a straight hacksaw.



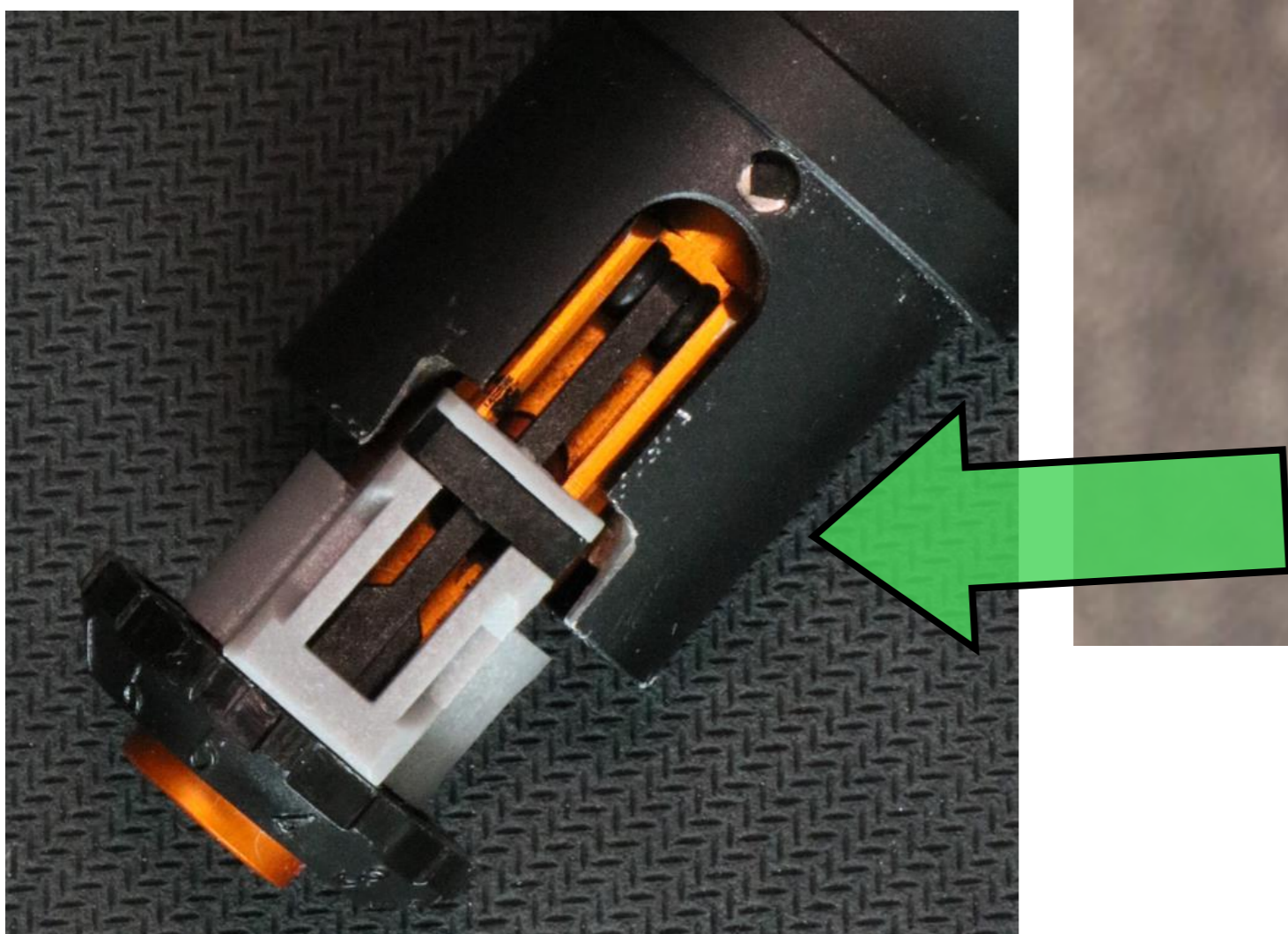
**B2.** Once removed use some sanding or sandpaper to remove any rough edges or burs. Smoothen out the areas that's been cut.

**C2**

The outer Barrel part should look like figure B2.

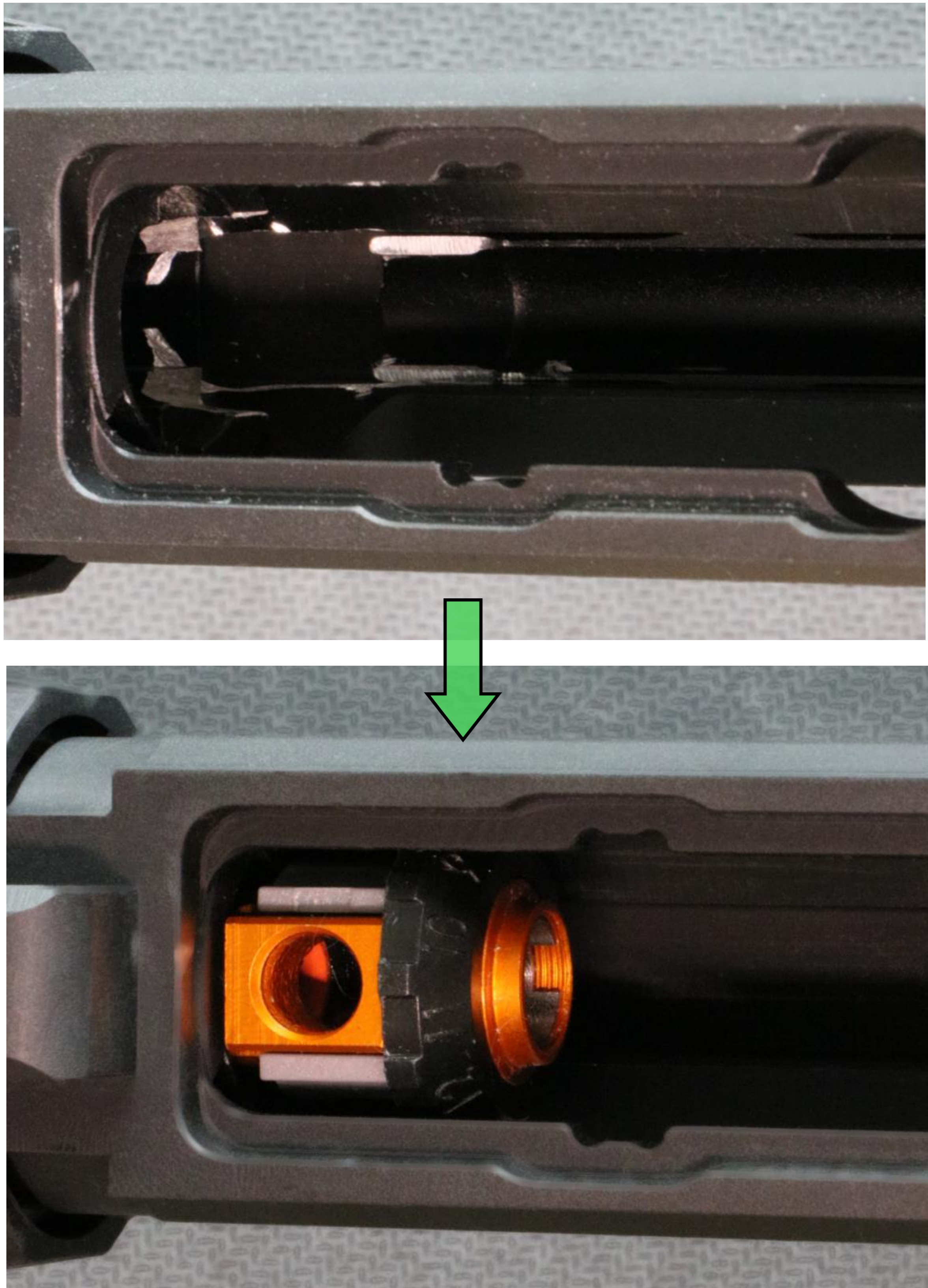


Test Fit the hop up chamber to ensure it fits ok. See below



## Assembly and Testing.

Once everything is modified put the three pieces back together and test whether the hop up unit with the newly TDC kit can fit in without restriction or resistance.



Congrats on your installation! If you encounter any issues or get stuck during the install process. Check out our troubleshoot section on our website or contact our customer service team where a one of our tech team can assist you along the way.  
[info@airtechstudios.com](mailto:info@airtechstudios.com)