

Freshly Pressed Toasties

Sausage Toastie	190
Mushroom and Basil Toastie	170
Barista's Toastie	220
Breakfast Toastie	230

Cakes by Tildé Bakery & Kitchen *On Rotation*

French Apple Pie	220
Chocolate Truffle Cake	190
Limoncello	210
Carrot Cheesecake	230

Sweet Endings

Chocolate Chip Cookie	130
Double Chocolate Chip Cookie	140

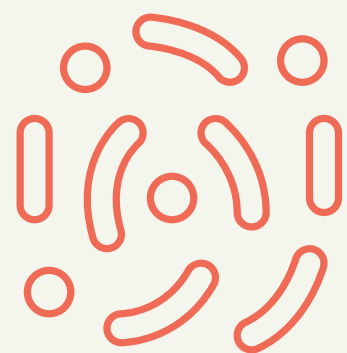
Fruit Juices

Le Fruit Juices	140
<i>Passionfruit</i>	
<i>Sugarcane & Calamansi</i>	
<i>Beetroot Guava</i>	
<i>Orange Nectar</i>	

Iced Chai by Jacob's Well

	<i>Iced 12 oz.</i>	<i>Iced 16 oz.</i>
Zero-Cal Chai-mericano	150	170
Sea Salt Chai-mericano	170	180
Chai Latte	170	190
Dirty Chai Latte	200	220

Ashwa....what?!?



Activated Charcoal

For a good detox and cleanse



Ashwagandha

To calm you down



Collagen

For bone and skin health



Cordyceps

For an energy boost

Freshly Pressed Toasties

Sausage Toastie	190
Mushroom and Basil Toastie	170
Barista's Toastie	220
Breakfast Toastie	230

Cakes by Tildé Bakery & Kitchen *On Rotation*

French Apple Pie	220
Chocolate Truffle Cake	190
Limoncello	210
Carrot Cheesecake	230

Sweet Endings

Chocolate Chip Cookie	130
Double Chocolate Chip Cookie	140

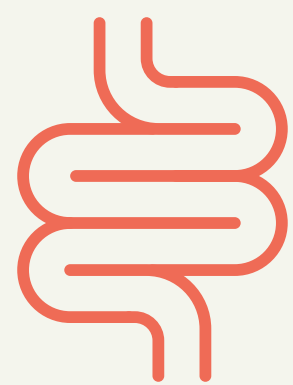
Fruit Juices

Le Fruit Juices	140
<i>Passionfruit</i>	
<i>Sugarcane & Calamansi</i>	
<i>Beetroot Guava</i>	
<i>Orange Nectar</i>	

Iced Chai by Jacob's Well

	<i>Iced 12 oz.</i>	<i>Iced 16 oz.</i>
Zero-Cal Chai-mericano	150	170
Sea Salt Chai-mericano	170	180
Chai Latte	170	190
Dirty Chai Latte	200	220

Ashwa....what?!?



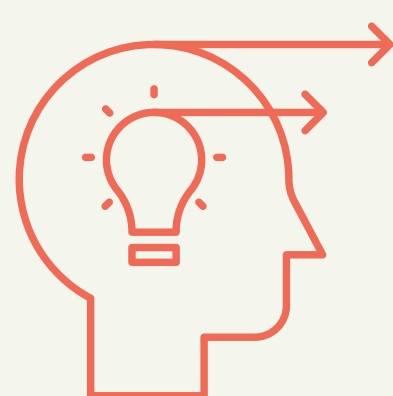
Flax Seed

To improve your digestive health



Lion's Mane

To improve your immune system



L-Theanine

For bone and skin health



Maca

For a better mood :)

Freshly Pressed Toasties

Sausage Toastie	190
Mushroom and Basil Toastie	170
Barista's Toastie	220
Breakfast Toastie	230

Cakes by Tildé Bakery & Kitchen *On Rotation*

French Apple Pie	220
Chocolate Truffle Cake	190
Limoncello	210
Carrot Cheesecake	230

Sweet Endings

Chocolate Chip Cookie	130
Double Chocolate Chip Cookie	140

Fruit Juices

Le Fruit Juices	140
<i>Passionfruit</i>	
<i>Sugarcane & Calamansi</i>	
<i>Beetroot Guava</i>	
<i>Orange Nectar</i>	

Iced Chai by Jacob's Well

	<i>Iced 12 oz.</i>	<i>Iced 16 oz.</i>
Zero-Cal Chai-mericano	150	170
Sea Salt Chai-mericano	170	180
Chai Latte	170	190
Dirty Chai Latte	200	220

Ashwa....what?!?



Monk Fruit

For a guilt-free tree



Reishi

To sleep better at night



Whey Protein

For muscle building



Ys+ Magic Mix

A proprietary super-power blend

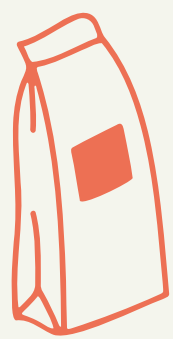
Rockwell Exclusives

Iced 12 oz. Iced 16 oz.

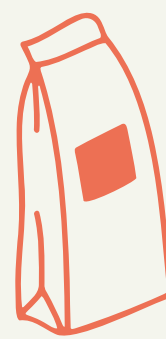
	Spring/Summer <i>Rose Water, Sea Salt Cream, Espresso, Cordyceps, Monk Fruit</i>	190	210
	Wildflower Slushie <i>Matcha Slushie, Espresso, Maca, OATLY!</i>	250	265
	Besties <i>Activated Charcoal, Espresso, Milk</i>	180	200
	Happy Horchata <i>Horchata Slushie, Espresso, Ashwaganda, OATLY!</i>	240	255
	Feel Good Mocha <i>AURO CHOCOLATE, Espresso, Reishi, OATLY!</i>	255	270

Espresso Bar

1 Choose your blend



**EXCLUSIVE:
WILD FLOWER**
Tropical Fruit, Red
Currant, Red Peach



**FLAGSHIP:
GOLDEN TICKET**
Milk Chocolate, Almonds,
Caramel

2 Choose your beverage

	Hot 8oz.	Hot 12oz.
Double Espresso	130	—
Long Black	150	170
Flat White/Latte/Cappuccino/Cortado	160	180

3 Personalize your drink with a modifier or two

CHOCO/VANILLA/CARAMEL +35
OAT/SOY/ALMOND/EXTRA SHOT +60

SEA SALT FOAM +50
ICED/DECAF +30

Filter Brew

Hot 8 oz. Hot 12 oz. Iced 12 oz. Iced 16 oz.

Seasonal Single Origins ●	150	170	170	180
Re-Fill	130	150	150	160

Yardstick+

12oz.

16oz.

Supercharged Iced Latte/Iced Black 180/170 210/200

1 Choose your caffeine level

2x

+60

1x

0.5x

+60

Decaf

+60

2 Supercharge your latte with any of the following:

Oat/Soy/Almond Milk	+60
Zero-Sugar Whey Protein by Wheyl (18g)	+60
True Collagen by Ancient+Brave (5g)	+95
Yardstick+ Magic Mix (5g)	+60
<i>Ashwaganda, Reishi, Cordyceps, Lion's Mane, L-Theanine</i>	
Monk Fruit Zero-Calorie Sweetener	+30

Oatly! Milk Coolers

12 oz.

16 oz.

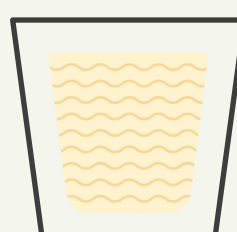


Layer Cake

Layers of purple yam, Oatly! oat milk, and sea salt cream. No coffee.

190

210



Banana & Honey ●

A meal-replacing oat banana drink. No coffee.

180

190

Yardstick Faves

Hot 8 oz.

Hot 12 oz.

Iced 12 oz.

Iced 16 oz.

Sea Salt Latte ●			210	230
Black Magic	175	190	190	205
Mocha ●	195	220	220	235
Vanilla Latte	170	190	200	220

Low-Caffeine

Hot 8 oz.

Hot 12 oz.

Iced 12 oz.

Iced 16 oz.

Tea		165	190	210
Chocolate	150	170	170	185
Sweet Matcha	165	185	185	200

● STAFF PICKS