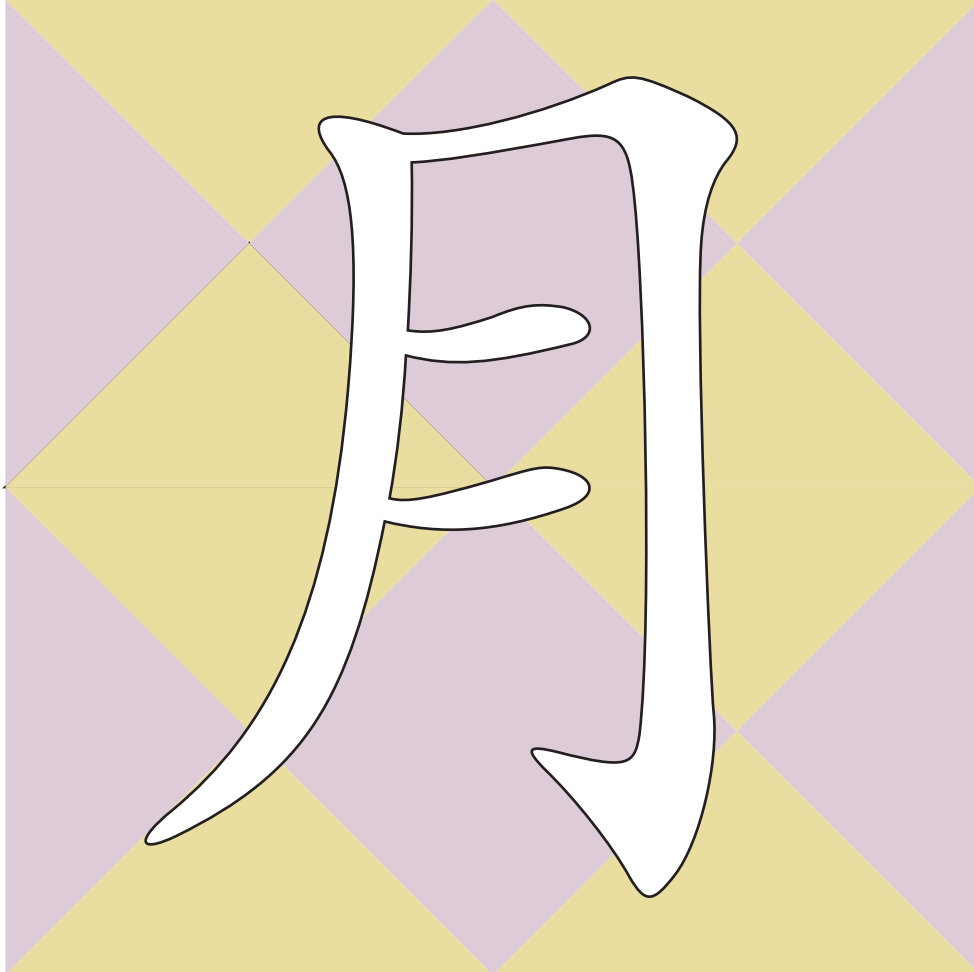


Japanese Calligraphy  
Learn to read and write Japanese with us.  
Colour me in staying within the lines.

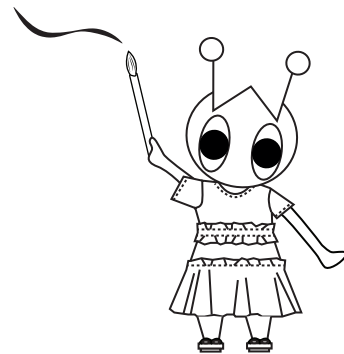


meaning

Moon

pronunciation

"Tsuki"



The moon was used as an indication to tell the time in a Japanese old calendar called the Lunar calendar.  
The month May is called 'Satsuki' and it means the month of planting rice sprouts.

