

# Focus Fireplaces brought to you by The Stove House



---

**Beams,  
Shelves and  
Surrounds  
for Stoves**

**7**

---

Contact Your Local Supplier & Installer:

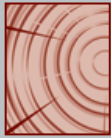
**The Stove House Ltd**  
**01730 810931**

**Focus Fireplaces** offer an incredible choice of authentic **beams** and **shelves** to complement your stove. This information will help you select from the many options available.

**1** Select the **PROFILE** of Beam or Shelf that you require

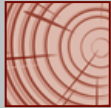
*Not available in Prime Timber*

**Great Beam**  
7½ x 5½"



*Not available in Prime Timber*

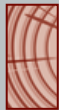
**Deep Beam**  
5½ x 5½"



**Large Fascia Beam**  
7½ x 2¾"



**Standard Fascia Beam**  
5½ x 2¾"



**Mini Fascia Beam**  
3¾ x 2¾"

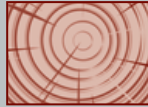


**Fascia Panel**  
7 x 1¼"



*Not available in Prime Timber*

**Great Shelf**  
5½ x 7½"



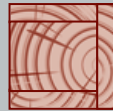
**Large Shelf**  
2¾ x 7½"



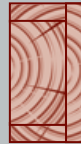
**Standard Shelf**  
2¾ x 5½"



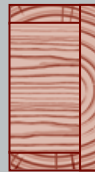
**Hollow Deep Beam**  
5½ x 5½"



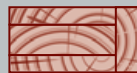
**Hollow Beam**  
7 x 4"



**Large Hollow Beam**  
9 x 7"



**Hollow Shelf**  
4 x 7"



**2**

Choose the **LENGTH** you would like – 42", 48" and 54" are standards, but Beams and Shelves can be supplied at *any* length



**+**

**CORBELS** can be added either to your Beam...



...or Shelf



### 3 Make your choice of SURFACE TEXTURE and AGEING

#### Round Edge

Round edges  
Smooth surface



#### Rustic

Nibbled edges  
Smooth surface



#### Dressed

Heavily contoured  
Smooth surface



#### Aged

Distressed edges  
Textured surface



#### Extremely Aged

Distressed edges and faces  
Textured surface



#### Ancient

Looks very old



Note: All beams (except Prime) feature knots, splits and shakes.

#### Prime

Prime timber is an option on all products except Great Beams, Great Shelves and Deep Beams. It is normally supplied with round edges.



### 4 Choose your COLOUR



Natural Waxed Oak



Light/Medium Oak



Medium Oak



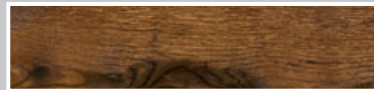
Medium/Dark Oak



Ebony on Oak



Silvered Oak



Warm Antique



Standard Pine



Antique Pine

### 5 You can CUSTOMISE your Beam at no extra cost

#### Arched

Slow arches are available on Standard Fascia Beams, Large Fascia Beams and Fascia Panels



#### Pegs



Pegs or Indents add character to any beam

#### Indents



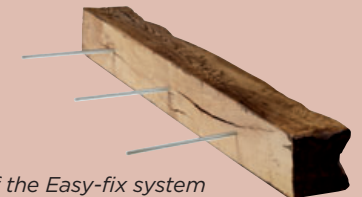
### 6 FIXING SYSTEMS for Deep Beams and Shelves



See page 7 for fixing illustration

#### Easy-fix

The Easy-fix system is a substantial bracket designed to simplify the fitting of the heavier beams and shelves. It comes supplied with plugs and screws. Once fitted to the wall, the beam is secured on the bracket with discreet fastenings underneath, this allows easy release for redecorating.



If the Easy-fix system is not specified: we supply three M10 x 300mm threaded metal bars that screw into pre-drilled holes in the back of the beam. The wall should then be drilled with 12mm holes to accept these bars. You will need to provide your own additional adhesives.

### FIXING SYSTEMS for Fascia Beams and Panels

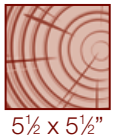
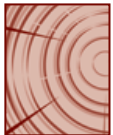


Fascia Beams, Hollow Beams and Fascia Panels are supplied with two metal plate keyholes inserted in the back. These come complete with plugs and screws.



Alternatively there is an Easy-fix system designed for Hollow Beams and Fascia Beams. (This is more convenient but not essential).

We recommend the additional use of grab adhesive.



7½ x 5½"

5½ x 5½"

# Great Beam and Deep Beam

Not available in Prime Timber

Great Beams and Deep Beams are cut from the heart of the oak log and therefore reveal lots of character including knots, splits and shakes. Every beam is unique. Skilful workmanship further enhances the beam with progressive levels of ageing (Rustic, Dressed, Aged and Extremely Aged). Each beam is then beautifully finished with your choice of colour. Please Note: Great Beams and Deep Beams are made from Air-dried Oak and are not available in Prime Oak or Pine.



Great Beam  
Aged Oak in a Medium Finish



Deep Beam  
Rustic Oak in a Natural Waxed Finish



Deep Beam  
Dressed Oak in a Natural Waxed Finish



Deep Beam  
Extremely Aged Oak in a Light/Medium Finish with Sculpting



Deep Beam  
Aged Oak in a Silvered Finish with Sculpting



Deep Beam  
Ancient Oak in a Light/Medium Finish



Deep Beam  
Ancient Oak in a Medium/Dark Finish



Deep Beam with Corbels: Rustic Oak in a Light/Medium Finish



Beamish: Ancient Oak in a Medium/Dark Finish



# Large Fascia Beam

7½ x 2¾"



Large Fascia Beam  
Prime Oak in a Natural Waxed Finish



Large Fascia Beam  
Rustic Oak in Light/Medium Finish with Arch



Large Fascia Beam  
Dressed Oak in a Medium Finish



Large Fascia Beam  
Aged Oak in a Natural Waxed Finish with Indents



Large Fascia Beam  
Aged Oak in Warm Antique Finish



Large Fascia Beam  
Ancient Oak in a Light/Medium Finish

Both Large and Standard Fascia Beams can be made in all our timber options. This includes Prime, Rustic, Dressed, Aged, Extremely Aged Oak and Pine. All these Beams are produced using Kiln-dried timber which is subject to far less movement.

# Standard Fascia Beam



5½ x 2¾"



Standard Fascia Beam  
Round Edge Pine in a Standard Waxed Finish



Standard Fascia Beam  
Rustic Oak in a Silvered Finish



Standard Fascia Beam  
Aged Oak in a Light/Medium Finish with Pegs



Standard Fascia Beam  
Extremely Aged Oak in a Medium/Dark Finish



Standard Fascia Beam  
Aged Oak in Warm Antique Finish



Standard Fascia Beam with Corbels  
Rustic Oak in a Medium Finish

Mini Fascia Beams, Fascia Panels and Floating Shelves can be made in all our timber options. This includes Prime, Rustic, Dressed, Aged, Extremely Aged Oak and Pine. All these Beams are produced using Kiln-dried timber which is subject to far less movement.



## Mini Fascia Beam

3 3/4" x 2 3/4"



Mini Fascia Beam  
Dressed Oak in a Light/Medium Finish



Mini Fascia Beam  
Rustic Oak in a Medium Finish



Mini Fascia Beam  
Aged Oak in a Medium/Dark Finish



## Fascia Panel

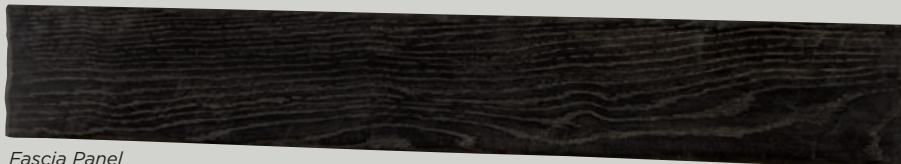
7 x 1 1/4"



Fascia Panel  
Aged Oak in a Silvered Finish



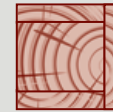
Fascia Panel  
Prime Oak in a Light/Medium Finish



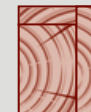
Fascia Panel  
Rustic Oak in an Ebony Finish



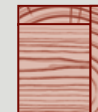
Hollow Deep Beam: Prime Oak in a Natural Waxed Finish with Lights



5 1/2 x 5 1/2"



7 x 4"



9 x 7"

## Hollow Beam

Hollow Beams are fabricated to give the appearance of a Solid Beam. Their lighter construction is ideal where weight is an issue. They can be made to any size. Hollow Beams are not available as Dressed or Extremely Aged.



Hollow Deep Beam  
Prime Oak in a Natural Waxed Finish



Hollow Beam  
Aged Oak in a Light/Medium Finish



Large Hollow Beam  
Prime Oak in a Natural Waxed Finish



2 3/4 x 7 1/2"



2 3/4 x 5 1/2"

## Large and Standard Shelves



*Standard Shelf  
Prime Oak in a Natural Waxed Finish*



*Standard Shelf  
Rustic Oak in a Medium Finish*



*Standard Shelf  
Aged Oak in a Light/Medium Finish*



*Standard Shelf  
Extremely Aged Oak in a Medium/Dark Finish*



*Large Shelf  
Aged Pine in an Antique Waxed Finish*

All the Floating Shelves above can be combined with a set of Corbels.

*Standard Shelf: Rustic Oak in a Medium Finish*



*Large Shelf with Corbels: Dressed Oak in a Natural Waxed Finish  
Beam Mirror: Dressed Oak in a Natural Waxed Finish*

### Easy-fix illustration



*Nothing can be easier than an Easy-fix!!*

*Once the beam is in place, it is easily secured from underneath with a few turns of the Allen Key.*



*Curved Shelf: Light Oak*



*Classical Shelf: Waxed Oak*



*Edinburgh Shelf: Rustic Oak in a Light/Medium Finish*



*Traditional Shelf: Waxed Oak*



*Aberdeen Shelf: Antique White Finish*

*Morpeth Shelf: Light/Medium Oak*



*Standard Shelf with Corbels: Rustic Oak in a Medium Finish*





*Long Corbel Shelf: Antique White Finish*



*Vyner Shelf: Light/Medium Oak*



*Canterbury Shelf: Waxed Oak*

*Plain Corbel Shelf: Antique Waxed Pine*



*Matlock Shelf and Matlock Mirror: Light Oak with Walnut Detail*

*Winchester Shelf: Standard Waxed Pine*



# Beautiful Steel Beam Covers

Create a superb ambience in your room with our authentic timber beams.

They are ideal where a steel beam needs to be covered as they can be made to almost any length and dimension and finished to match your fireplace.

Wall and ceiling spars and dado rails further enhance the overall effect.

The room set features a Beam Cover and Spars in Rustic Oak in a Light/Medium Finish with a Beamish Surround, Beamish Mirror and a Hollow Beam Side Table to match.



Steel Beam Cover: Aged Oak in a Silvered Finish



Steel Beam Cover: Prime Oak in a Natural Waxed Finish



- A. Steel Beam Cover and Spars: Rustic Oak in a Light/Medium Finish
- B. Beamish Surround: Rustic Oak in a Light/Medium Finish
- C. Beamish Mirror: Rustic Oak in a Light/Medium Finish
- D. Hollow Beam Side Table: Rustic Oak in a Light/Medium Finish
- E. Metal and Wood Log Store
- F. Justine Bookcase: Waxed Oak

# Surrounds for Stoves

## Gatsby

The Gatsby surround is produced from solid air-dried European Oak, cut from the heart of the log and features natural knots, splits and shakes.



The Gatsby is supplied in three pieces. Metal keyhole plates are inserted in the backs of the legs and mantel.

	METRIC	IMPERIAL
Mantel	1371	54
Mantel Depth	140	5½
Surround Height	1104	43½
Opening Height	915	36
Opening Width	915	36
Width at Base	1270	50
Rebate	0	0



### Special sizes?

No Problem! Most of the surrounds in this brochure can be made to measure.



- A. Gatsby Surround: Aged Oak in a Medium Finish
- B. Steel Beam Cover in a Medium Finish
- C. Spars and Corbels in a Medium Finish
- D. Bookcase: Aged Oak in a Medium/Dark Finish
- E. Coffee Table: Aged Oak in a Medium Finish
- F. TV Unit with Log Store: Rustic Oak in a Light/Medium Finish

**Please Note:** All the surrounds in this brochure can be made **TALLER** to suit individual stove clearance requirements.

# Surrounds for Stoves

## Beamish



*Beamish: Rustic Oak in a Light/Medium Finish*



*Beamish: Aged Oak in a Medium Finish  
Beamish Mirror: Aged Oak in a Medium Finish*

### **Special sizes?**

*No Problem! Most of the surrounds in this brochure can be made to measure.*



The dimensions of the Barlby and Beamish are almost the same, however the Barlby has shallower legs which gives slightly more overhang on the mantel.

	METRIC	IMPERIAL
Mantel	1295	51
Mantel Depth	140	5½
Surround Height	1054	41½
Opening Height	915	36
Opening Width	915	36
Width at Base	1193	47
Rebate	0	0

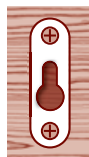
SIZES (MM)	WIDTH	HEIGHT
Beamish Mirror	1168	730
Log Holder	570	490

## Barlby

Barlby: Rustic Oak in a Light/Medium Finish



The Beamish, Barlby and Bentley are supplied in three pieces. Metal keyhole plates are inserted in the backs of the legs and mantel.



## Bentley



Bentley: Extremely Aged Oak in a Medium Finish

	METRIC	IMPERIAL
Mantel	1320	52
Mantel Depth	70	2¾
Surround Height	1105	43½
Opening Height	915	36
Opening Width	915	36
Width at Base	1270	50
Rebate	0	0



*Sutton with matching Mirror and Hollow Beam Side Table  
Aged Oak in a Medium/Dark Finish*

## Sutton

*The designs on pages 14 and 15 are  
supplied as one-piece surrounds.*

	METRIC	IMPERIAL
Mantel	1220	48
Mantel Depth	135	5 <sup>3</sup> / <sub>8</sub>
Surround Height	1080	42 <sup>1</sup> / <sub>2</sub>
Opening Height	889	35
Opening Width	889	35
Width at Base	1220	48
Rebate	0	0



*Woodstock with matching Beam Mirror  
Aged Oak in a Light/Medium Finish*

## Woodstock

	METRIC	IMPERIAL
Mantel	1270	50
Mantel Depth	190	7 <sup>1</sup> / <sub>2</sub>
Surround Height	1124	44 <sup>1</sup> / <sub>4</sub>
Opening Height	889	35
Opening Width	889	35
Width at Base	1181	46 <sup>1</sup> / <sub>2</sub>
Rebate	0	0

*Woodfield: Aged Oak in a Medium/Dark Finish*



## Woodfield

# Surrounds for Stoves

## Barkston

	METRIC	IMPERIAL
Mantel	1320	52
Mantel Depth	127	5
Surround Height	1085	42 <sup>3</sup> / <sub>4</sub>
Opening Height	915	36
Opening Width	915	36
Width at Base	1168	46
Rebate	0	0



Barkston: Extremely Aged Oak in a Light/Medium Finish

## Chelmsford



Chelmsford: Rustic Oak in a Light-Light/Medium Finish

The Chelmsford and Chatham are substantial surrounds produced from four pieces of Kiln-dried Oak. These designs can easily be made to your specific dimensions.

	METRIC	IMPERIAL
Mantel	1370	54
Mantel Depth	160	6 <sup>1</sup> / <sub>4</sub>
Surround Height	1162	45 <sup>3</sup> / <sub>4</sub>
Opening Height	915	36
Opening Width	915	36
Width at Base	1270	50
Rebate	0	0

## Chatham



# Cropton



Cropton: Rich Oak

	METRIC	IMPERIAL
Mantel	1422	56
Mantel Depth	228	9
Surround Height	1187	46 <sup>3</sup> / <sub>4</sub>
Opening Height	915	36
Opening Width	915	36
Width at Base	1257	49 <sup>1</sup> / <sub>2</sub>
Rebate	28	1 <sup>1</sup> / <sub>8</sub>
Removable To	76	3



Kexby: Medium Oak

	METRIC	IMPERIAL
Mantel	1397	55
Mantel Depth	216	8 <sup>1</sup> / <sub>2</sub>
Surround Height	1149	45 <sup>1</sup> / <sub>4</sub>
Opening Height	915	36
Opening Width	915	36
Width at Base	1257	49 <sup>1</sup> / <sub>2</sub>
Rebate	28	1 <sup>1</sup> / <sub>8</sub>
Removable To	76	3

# Kexby



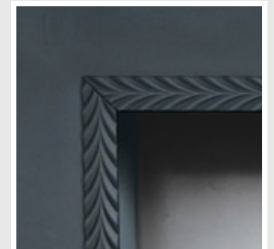
Sphinx



Studded



Sphere





## Surrounds for Stoves



Rosedale: Brushed Oak in a Light/Medium Finish

	METRIC	IMPERIAL
Mantel	1422	56
Mantel Depth	190	7½
Surround Height	1066	42
Opening Height	997	39¼
Opening Width	889	35
Width at Base	1220	48
Rebate	28	1⅛
Removable To	76	3

## Rosedale

## Fascia Plates

An ideal way to complement a surround and to stylishly finish the front edge of a stove chamber.

The plates are available in three different designs as illustrated and are ideally suited to a 36" x 36" fire surround opening.

However, with an overall plate size of 40" by 40" (1017mm x 1017mm) and a frieze size of 33" (838mm) high x 30" (726mm) wide, a large number of options are possible.

The plate opening is 32" (812mm) high and 28" (712mm) wide.



Gainsborough: Brushed Oak in a Golden Finish

	METRIC	IMPERIAL
Mantel	1397	55
Mantel Depth	197	7¾
Surround Height	1150	45¼
Opening Height	915	36
Opening Width	915	36
Width at Base	1258	49½
Rebate	28	1⅛
Removable To	76	3

## Gainsborough



Leicester: Soft Cream Finish

## Painted Surrounds for Stoves

	METRIC	IMPERIAL
Mantel	1320	52
Mantel Depth	127	5
Surround Height	1150	45¾
Opening Height	915	36
Opening Width	889	35
Width at Base	1220	48
Rebate	0	0

## Lichfield

Lichfield: Antique White Finish



## Leicester

Two attractive surrounds that can be made to match the size of your fireplace opening.

	METRIC	IMPERIAL
Mantel	1270	50
Mantel Depth	110	4¼
Surround Height	1130	44½
Opening Height	915	36
Opening Width	889	35
Width at Base	1182	46½
Rebate	0	0

Special sizes?  
No Problem!



# Complete the look with Furniture to match your Beam

What could be more ideal than choosing some occasional furniture that matches your fireplace or beam?

All the pieces can be made to your individual requirements.



1. TV Unit with Log Store: Rustic Oak in a Light/Medium Finish



4. Log Holder: Oak in a Waxed Finish



7. Bookcase: Aged Oak in a Medium/Dark Finish

	WIDTH	DEPTH	HEIGHT
1.	1220	355	610
2.	1000	500	450
3.	970	470	450
4.	570	360	490
5.	400	350	360
6.	495	495	450
7.	810	305	1225
8.	1220	610	455
9.	600	540	455



2. Coffee Table: Aged Oak in a Medium Finish



5. Log Box: Oak in a Light/Medium Finish



9. Hollow Beam Side Table: Rustic Oak in a Medium Finish



3. TV Unit: Prime Oak in a Natural Waxed Finish



6. Side Table: Aged Oak in a Medium Finish



8. Solid Beam Coffee Table: Aged Oak in a Medium/Dark Finish (very heavy)

# Dimensions, Timber and Finishes

Beams	Dimensions (Imperial in Black, Metric in Red)					Timber and Finishes								
	Length	Front Size		Top Size		Prime Oak	Rustic Oak & Round Edge	Dressed Oak	Aged Oak	Extremely Aged Oak	Ancient Oak	Waxed Pine	Aged Pine	Painted
Great Beam	<i>Any length up to 3m</i>	7½	190	5½	140		●	●	●	●	●			
Deep Beam	<i>Any length up to 3m</i>	5½	140	5½	140		●	●	●	●	●			
Large Fascia Beam	<i>Any length up to 3m</i>	7½	190	2¾	70	●	●	●	●	●	●	●	●	
Standard Fascia Beam	<i>Any length up to 3m</i>	5½	140	2¾	70	●	●	●	●	●	●	●	●	
Mini Fascia Beam	<i>Any length up to 3m</i>	3¾	95	2¾	70	●	●	●	●	●	●	●	●	
Hollow Deep Beam	<i>Any length up to 3m</i>	5½	140	5½	140	●	●		●		●	●		
Hollow Beam	<i>Any length up to 3m</i>	7	178	4	102	●	●		●		●	●		
Large Hollow Beam	<i>Any length up to 3m</i>	9	228	7	178	●	●		●		●	●		
Fascia Panel	<i>Any length up to 3m</i>	7	178	1¼	30	●	●	●	●		●	●		
<b>Beams with Corbels</b>	Mantel Size	Overall Height		Width between Corbels										
Great Beam with Corbels	<i>Any length up to 3m</i>	18	457	<i>Adjustable</i>			●	●	●	●	●			
Deep Beam with Corbels	<i>Any length up to 3m</i>	16	406	<i>Adjustable</i>			●	●	●	●	●			
Std Fascia Beam with Corbels	<i>Any length up to 3m</i>	16	406	<i>Adjustable</i>		●	●	●	●	●		●	●	
<b>Floating Shelves</b>	Length	Front Size		Top Size										
Great Shelf	<i>Any length up to 3m</i>	5½	140	7½	190		●	●	●	●	●			
Large Shelf	<i>Any length up to 3m</i>	2¾	70	7½	190	●	●	●	●	●	●	●	●	
Standard Shelf	<i>Any length up to 3m</i>	2¾	70	5½	140	●	●	●	●	●	●	●	●	
Hollow Shelf	<i>Any length up to 3m</i>	4	102	7	178	●	●		●		●	●		
<b>Shelves</b>	Mantel Size	Overall Height		Width between Corbels										
Curved Shelf	48 x 8¼	1220 x 210	9⅝	244	34	863	●					●		●
Edinburgh Shelf	52 x 5½	1320 x 140	–	–	<i>Not Applicable</i>			●		●	●			
Aberdeen Shelf	52 x 5½	1320 x 140	–	–	<i>Not Applicable</i>		●							●
Morpeth Shelf	48 x 3½	1220 x 89	4¼	108	<i>Not Applicable</i>		●							●
Classical Shelf	54 x 7½	1370 x 190	11¾	298	39	990	●				●			
Traditional Shelf	54 x 7½	1370 x 190	9⅞	250	39	990	●				●			
Shelf with Corbels	<i>Any length up to 3m</i>	13¼	336	<i>Adjustable</i>			●	●	●	●		●	●	
Long Corbel Shelf	51 x 7	1295 x 178	14	355	36	915	●					●		●
Vyner Shelf	54 x 7	1370 x 178	9½	240	36	915	●					●		●
Canterbury Shelf	47¼ x 5½	1200 x 140	3½	89	<i>Not Applicable</i>		●							●
Plain Corbel Shelf	51 x 7	1295 x 178	11	280	38	965	●					●		●
Matlock Shelf	47 x 7	1193 x 178	8¾	222	<i>Not Applicable</i>		●							
Winchester Shelf	54 x 7½	1370 x 190	12¾	324	36	915	●	●		●	●	●	●	
<b>Accessories</b>	Height	Width												
Matlock Mirror	28	711	38	965	<i>Not Applicable</i>		●							
Beam mirror	31½	800	41½	1053	<i>Not Applicable</i>		●	●		●	●	●	●	
Beamish Mirror	28¾	730	46	1168	<i>Not Applicable</i>			●	●		●	●		

Great Beams and Deep Beams in 'Rustic', 'Dressed', 'Aged', 'Extremely Aged' and 'Ancient' textures are produced from solid, air-dried European Oak; cut from the heart of the log. They feature natural knots, splits and shakes.

Fascia Beams and Panels and Shelves are produced from kiln-dried European Oak and also may feature some natural knots, splits and shakes.

Hollow Beams and Shelves and also Steel Beam Covers are fabricated from 21mm kiln-dried oak. Thus they can be made to any size and are much lighter in weight than a corresponding solid beam. Other beams, surrounds and shelves in the brochure are manufactured from first quality kiln-dried timber.

Timber being a natural product, is subject to a degree of movement under extreme conditions. Whilst we would expect very few problems we cannot guarantee its performance. Painted shelves and surrounds are manufactured from high quality MDF.

**We offer a made-to-measure service on most of the products within this brochure. Beams can be cut to any length up to 3 metres.**

*These products are continually updated and improved. We reserve the right to alter designs, dimensions and specifications of product without notice.*

*All sizes are approximate. Brochure colours may vary from the actual product due to printing processes and the variations in finishing.*

Your Local Supplier & Installer:

**The Stove House**

**01730 810931**

Bepton Rd  
Midhurst  
GU29 9LU