

Thermal Imaging Camera IR0280

Instruction Manual



**Perfect
Prime**

www.perfectprime.com

Table of Contents:

Overview..... 2-3

Safety & Considerations..... 3

Product Features..... 4

Product Specifications

- 1. Product Specifications..... 5
- 2. Thermal Image Specifications..... 5
- 3. Software Features..... 5

Operation Flow

- 1. Power On..... 6
- 2. Power Off..... 6
- 3. Display Off (Sleep Mode)..... 6
- 4. Menu Screen..... 7
- 5. Measurement Screen..... 8-9
- 6. Display Brightness..... 10
- 7. Date and Time..... 10
- 8. Auto-off Timer..... 10
- 9. Hi-Low Temperature Alarm..... 10-11
- 10. Auto-monitor Alarm..... 11
- 11. Temperature Unit..... 11
- 12. Image Format..... 12
- 13. Factory Reset..... 12
- 14. Min/Max Crosshair..... 12
- 15. Color Palette..... 13
- 16. Color Palette Guide 13
- 17. View Images/Videos..... 13-14
- 18. Delete Images/Videos..... 15
- 19. Emmisivity..... 16

Overview

IR0280 is a thermal imaging camera that integrates surface temperature measurement and real-time thermal image. With this product, the potential problems can be identified on the color display screen which is helpful for users to locate problems, take readings and solve the issue.

The product has a visual camera integrated to increase the differentiation degree. The thermal and full vision images and videos can be stored in the internal memory card or an additional detachable SD card. The image or video can be stored in PC to generate a report and print.

The following are the major features of IR0280:

- 1. High accuracy:** The adjustable radiation coefficient increases the measurement accuracy of reflective surfaces.
- 2. Time-saving:** The traditional infrared thermometer needs to measure every component one by one, this is not necessary for the IR0280.
- 3. Easy to use:** Turn on the device and start measuring temperature right away.
- 4. Image & Video:** The IR0280 has the capabilities to take both images and videos, making it easier for users to analyze the situation.
- 5. Adjustable:** 9 types of color palettes and wide range of emissivity values provided.

The product can be utilized in many fields, for instance:

- 1. *Detect spills and leaks of chemicals*** which have different thermal signatures to the surroundings.
- 2. *Fire fighting:*** Vision can be obscured by smoke and debris in the event of a fire, thermal imaging can see through this and locate victims or re spots.
- 3. *Locate the source of abnormal leaking of heat*** of a house or a machine, find out the problem area and fix it.
- 4. *Enable drug-enforcement*** units to locate cannabis plants by detecting abnormal amount of heat spot in buildings.

5. **Moisture detection:** Areas with lower temperatures to its uniform surroundings can be a source of moisture staining or damage.
6. **Measure body temperatures:** Point the thermal imaging camera at a person to find their surface body temperature.
7. **Night vision:** Measuring the electromagnetic energies given off when objects emit heat, the IR0280 translates those energies into visible light for users to see them in the dark.
8. **Building inspection:** Check that heat is retained uniformly in a building.

IR0280 is the ideal selection for electrician, maintenance personnel, technicians and even the emergency personnel.

Safety & Considerations



Please read the instructions carefully so as to ensure accurate measurement results and safety:

1. Do not use device in explosive, flammable or corrosive environment.
2. Since the product is a precision electronic and sensitive optical device. Do not drop it or allow impacts to occur to prevent damage.
3. Do not dismantle the product, doing so can damage it and revoke the warranty.
4. It is suggested to used the attached USB cable.
5. Please use a damp cloth or gentle soap to clean the enclosure of the device. Do not use abradant, isopropanol or solvent to clean. Special optical lens cleaner should be used to clean the screen.

Product Features

PRODUCT FEATURES



- 1 Menu Button
- 2 Up, Down, Left and Right Keys
- 3 Power Button
- 4 USB Port & SD Card Slot
- 5 Visible Light Camera
- 6 Thermal Camera
- 7 Measure Button

Product Specifications

Model no.: IR0280

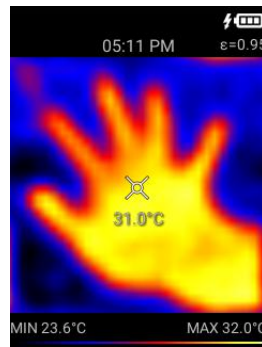
Product Specifications		
1	Power Supply	3.7V Li-ion rechargeable battery, 2500mAh, Size 18650
2	Panel	2.8" color LCD display
3	Touch Panel	Resistive type Touch Panel
4	Keys	7 keys (Power, Up/Down/Left/Right, Menu, Measure)
5	Sensors	32 x 32 Thermal Array, Humidity Sensor, CMOS sensor
6	Internal memory	1GB memory
7	External memory (micro SD slot)	16GB SD card included
8	USB connection	Photo upload to PC, and USB charging battery
9	Battery life	6hrs
10	Auto Power-off time	5min
11	Operating temperature	-10°C ... +50°C
12	Storage temperature	-20°C ... +60°C
13	Dimensions	215 x 55 x 62 mm
14	Weight	230g
15	Warranty	2 years
Thermal Image Specification		
1	Resolution of infrared image	32*32(1024) pixel
2	Resolution of visible image	0.2 megapixels
3	Field angle/shortest focal distance	33°x33°/0.1m
4	Thermal sensitivity	0.15°C
5	Range of temperature measurement	-30°C ... +1000°C (-22°F~1832°F)
6	Measure accuracy	-30-300°C ±1% or ±1°C 300-1000°C ±2% or ±2°C
7	Emissivity	0.01 – 1.0
8	Image capturing frequency	9Hz
11	Range of wave length	8-11.5µm
12	Focal distance	Fixed
14	Vision option	5 variants
16	Image format	BMP, JPG
17	Video format	MP4
Software Features		
1	Blending mode	Hue blending
2	Temperature Alert	High or Low Temperature Alert
3	Image & Video recording	BMP/JPG (Image), MP4 (Video)
4	Brightness	Adjustable Brightness
5	Auto off function	Adjustable Auto-off function

Operation Flow

- 1) Power ON: Press & Hold Power button for 2 sec

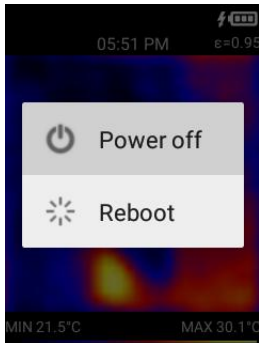


Opening Screen (wait for initialization)

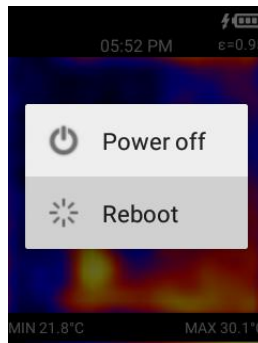
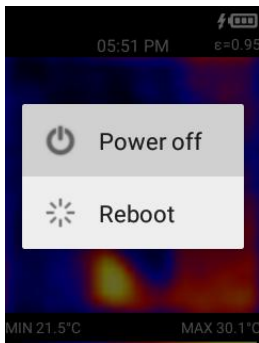


Measurement Screen

- 2) POWER OFF: Press & Hold Power button for 2sec.



A pop-up menu appears for Power Off or Reboot selection



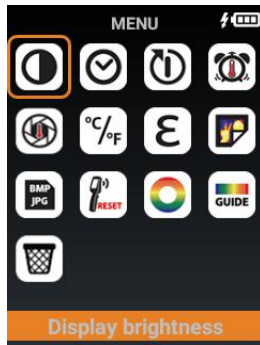
Use Up/down button to select, and press Measure button to confirm.

- 3) Display OFF (Sleep Mode): Press Power button once to turn off display. Press Power button again to turn on it.

Remark:

- a. The Measurement screen is the default screen when turn on the display.

4) Menu Screen: Press the Menu button to enter Menu mode



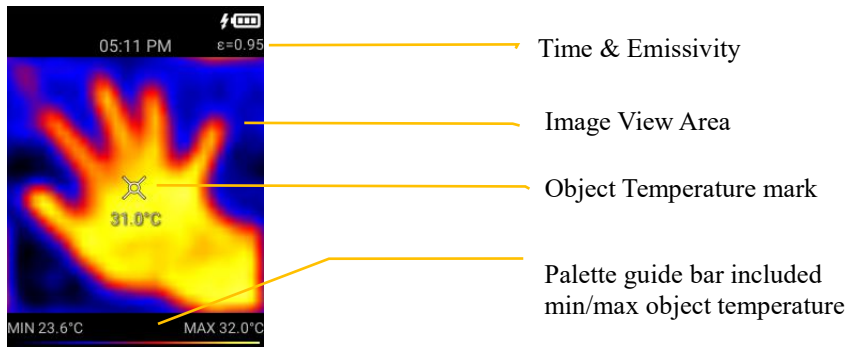
The default selection is first icon (i.e. Display brightness)

- Use Up/Down/Left/Right button to select the icon. Then, press Measure button to open the selected item.
- Press Menu button to back to Measurement Screen

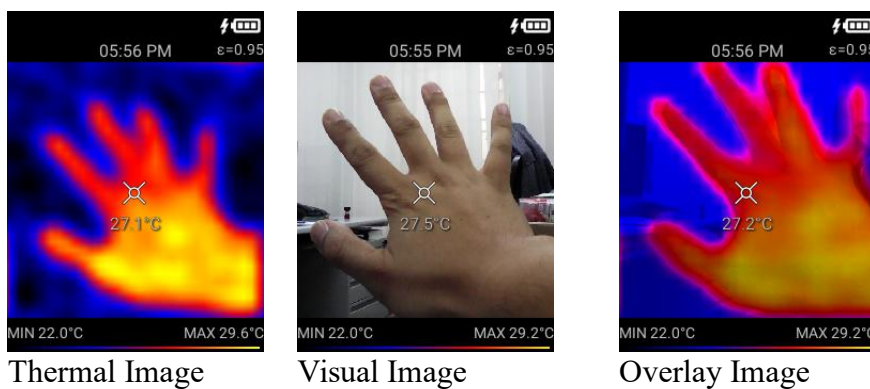
The summary of Menu icons:

	Display Brightness - To set the brightness of display
	Date and Time - To set time and date
	Auto-Off Timer - To set the auto-off timer for the Display
	Hi-Low Temperature Alarm - To set the high or low temperature alarm
	Auto-monitor Alarm - To capture the thermal image when over the Temperature Alarm over a period of time
	Temperature Unit - To set temperature unit degree C / degree F
	Emissivity - To adjust the emissivity from 0.01 to 1.0
	View Image - To view the captured thermal image/video
	Image format - To set the image output format (Bitmap or JPEG)
	Factory Reset - To reset factory setting
	Color Palette - To select the thermal image color palette
	Color palette guide - To turn on/off the color palette reference guide
	Trash - To delete image/video permanently
	Max/Min - To show/ not show the maximum and minimum points

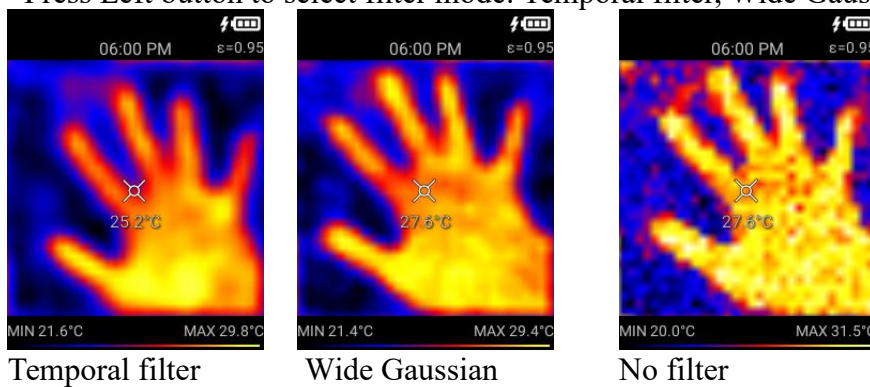
5) Measurement Screen



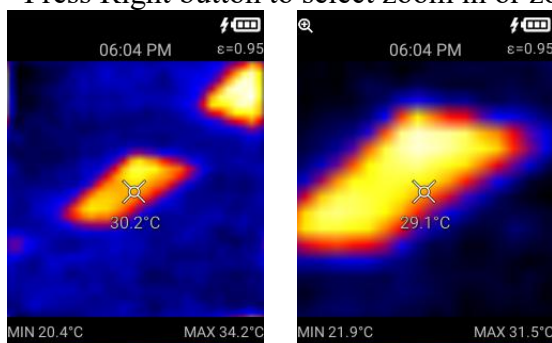
- Press Menu button to enter Menu mode.
- Press Up/Down to select image mode: Thermal Image, Visual Image, Overlay Image



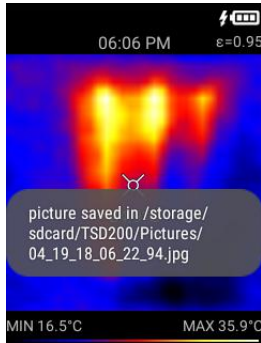
- Press Left button to select filter mode: Temporal filter, Wide Gaussian filter, No filter



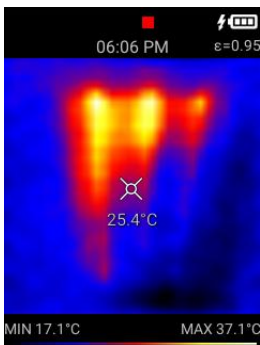
- Press Right button to select zoom in or zoom out.



- Press Measure button to capture image; Press & Hold Measure button to take video.

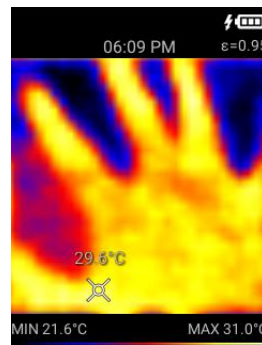
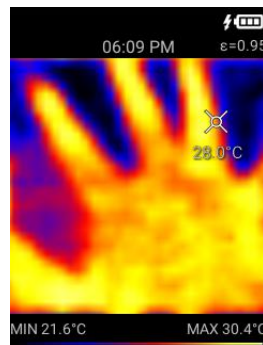
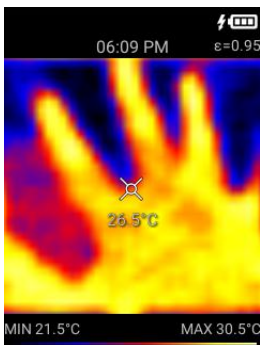


If external SD card is not present, the image will be saved to the internal memory.
 If external SD card is present, the image will be saved to the SD card.



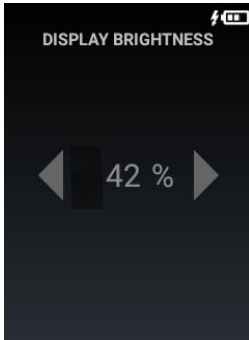
The recording icon appear to indicate the video recording. The video is saved in mp4 format. When the Measure button release, the recording will be stopped and will be saved in the memory.

- Touchable object temperature mark



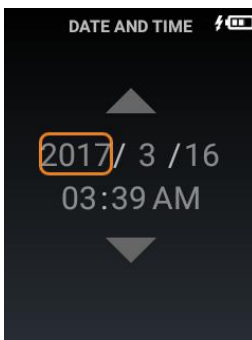
Touch the screen to move the object temperature mark, and show the temperature of that location.

6) Display Brightness



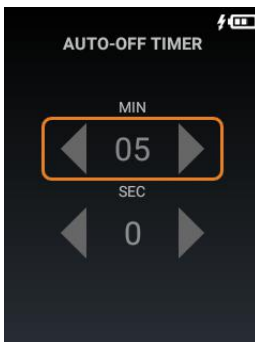
- Press Left/Right button to increase/decrease the % of display brightness.
- Press Measure to confirm
- Press Menu to return to the previous screen.

7) Date and time



- Press Up/Down button to increase/decrease the selected item
- Press Left/Right button to select the item for change
- Press Measure to confirm
- Press Menu to return to the previous screen.

8) Auto-off timer

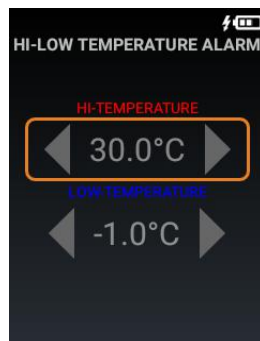
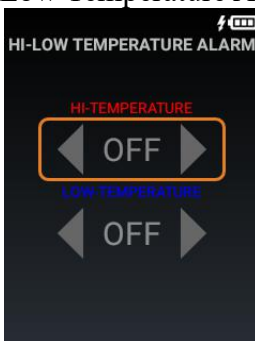


- Press Left/Right to increase/decrease the selected item
- Press Up/Down to select the Minute or Second.
- Press Measure to confirm
- Press Menu to return to the previous screen.

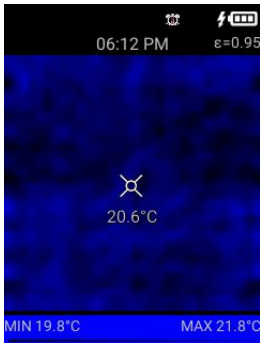
Remark:

- The minimum Auto-off timer is 0min,30sec
- The maximum Auto-off timer is 30min,0sec.
- The timer is for Display OFF only.

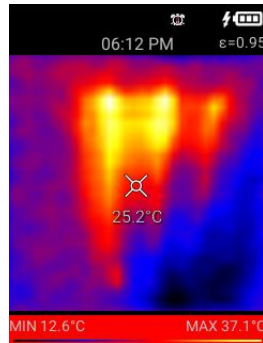
9) Hi-Low Temperature Alarm



- Press Left/Right button to increase/decrease the selected item
- Press Up/Down button to select the High or Low Temperature setting.
- Press Measure to confirm
- Press Menu to return to the previous screen.



Low Temperature Alarm
Palette guide (Blue color)

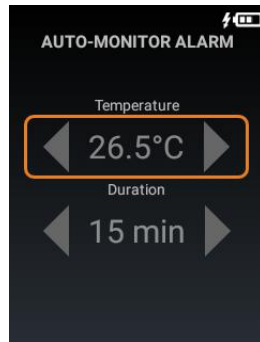
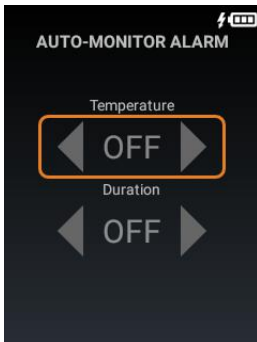


High Temperature Alarm
Palette guide (Red color)

Remark:

- a. The Hi-Low Temperature Alarm is OFF by default
- b. Press and Hold Measure button to turn ON or OFF the Hi-Low Temperature Alarm

10) Auto-Monitor Alarm

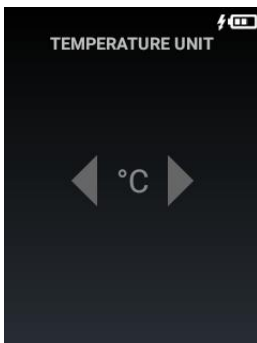


- Press Left/Right button to increase/decrease the selected item
- Press Up/Down button to select the Temperature or Duration.
- Press Measure to confirm
- Press Menu to return to the previous screen.

Remark:

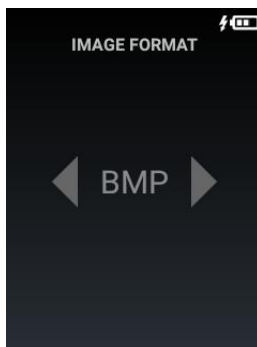
- a. Duration is from 15min, 30min, 45min, 60min, 90min and 120min.
- b. The Auto-monitor Alarm Duration is OFF by default
- c. Press and Hold Measure button to turn ON or OFF the Auto-Monitor Alarm

11) Temperature Unit



- Press Left/Right button to select degree C or degree F
- Press Measure to confirm
- Press Menu to return to the previous screen.

12) Image Format



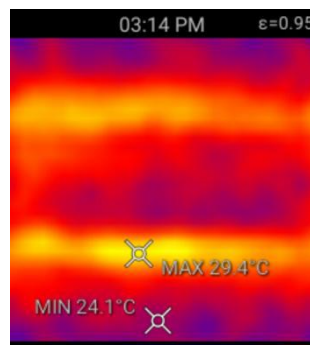
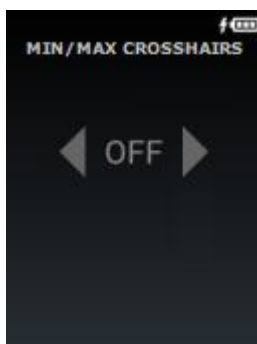
- Press Left/Right to select BMP or JPG image format
- Press Measure to confirm
- Press Menu to return to the previous screen.

13) Factory Reset

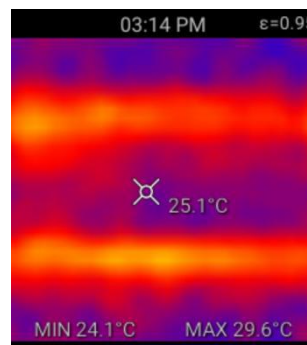


- Press Left/Right button to select YES or NO
- Press Measure to confirm
- Press Menu to return to the previous screen.

14) Min/Max Crosshairs



Min/Max ON



Min/Max OFF

- Press Left/Right to select ON or OFF
- Press Measure to confirm
- Press Menu to return to previous screen.

Remarks:

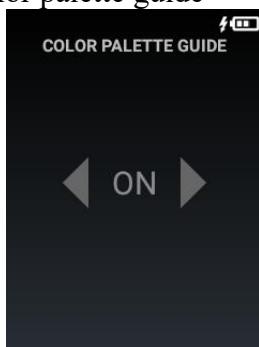
- When ON, exact maximum and minimum points and temperatures will both show on the measurement screen.
- When OFF (default), maximum and minimum temperatures will only show at the bottom of the measurement screen.

15) Color palette

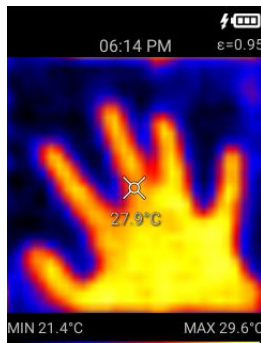


- Press Up/Down button to select the color palette
- Press Measure to confirm
- Press Menu to return to the previous screen.

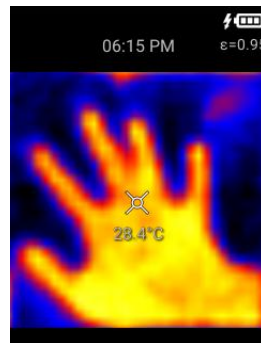
16) Color palette guide



- Press Left/Right button to select ON or OFF
- Press Measure to confirm and back to the previous screen
- Press Menu to back to the previous screen.

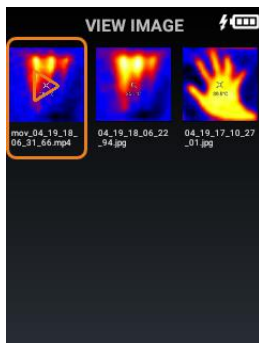


Palette guide ON



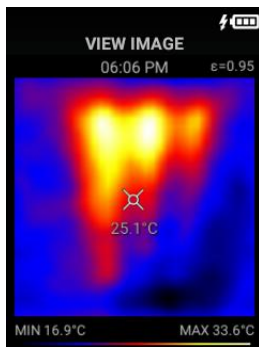
Palette guide OFF

17) View Images/Videos

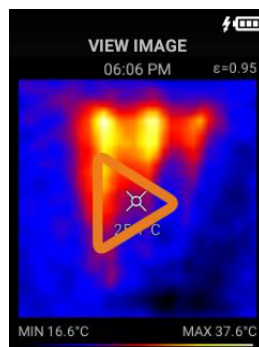


- Press Up/Down/Left/Right button to select Image Icon
- Press Measure to open image/video; Press and Hold Measure to delete selected item.
- Press Menu to return to the previous screen.

a) View Image or Video



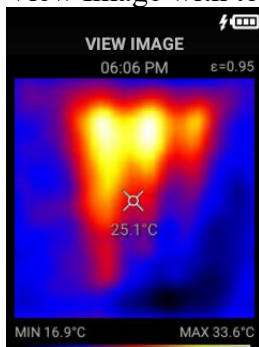
Image



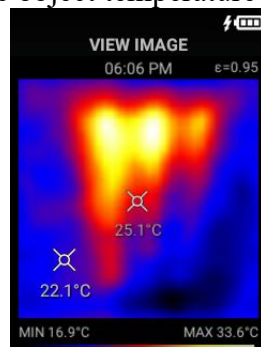
Video

- For the video, press Measure button to start the video
- Press Left/Right button for Previous/Next Image or Video
- Press Menu button to return to the previous screen

b) View Image with touchable object temperature mark



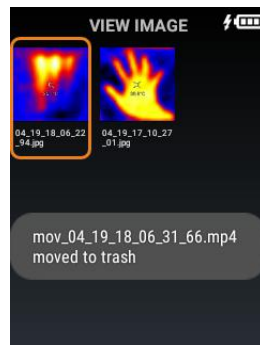
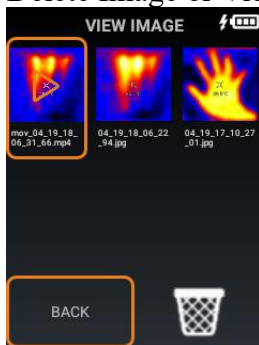
Original Image



New movable temperature mark

- Touch the screen to show the temperature of that location.

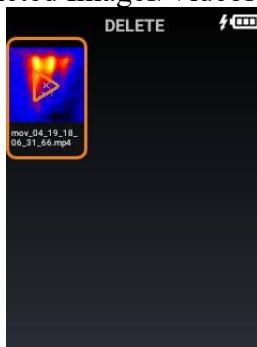
c) Delete Image or Video



- Hold the measure button until the pop-up menu appears.
- Press Left/Right button to select BACK or Trash icon
- Press Measure to confirm

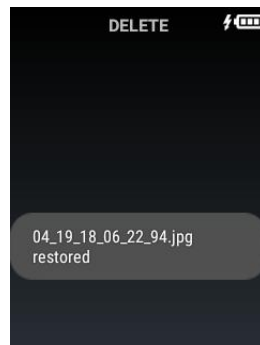
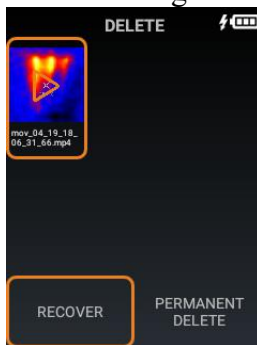
Remark: The deleted items is not deleted. It will move to the Trash.

18) Deleted Images/Videos



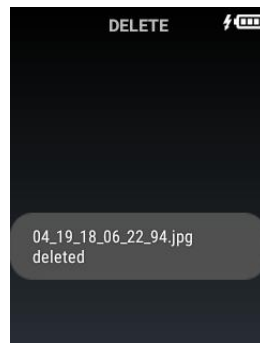
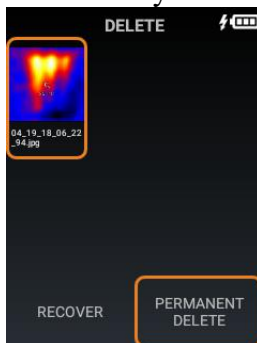
- Press Up/Down/Left/Right button to select Image Icon
- Press Measure to open the image or video; Press and Hold Measure to pop-up the recover or permanent delete menu.
- Press Menu to return to the previous screen.

a) Recover Image



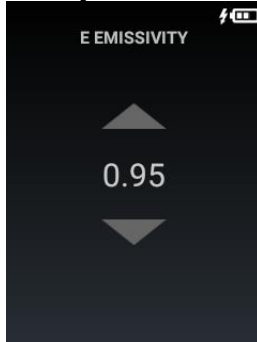
- Press and Hold Measure to pop-up the recover or permanent delete menu.
- Select the Recover button, and press Measure to confirm.
- The selected item will be recovered

b) Permanently delete image



- Select the Permanent Delete button, and press Measure to confirm.
- The selected item will be deleted permanently.

19) Emissivity



- Press Up/Down button to adjust the emissivity.
- Press Measure to confirm
- Press Menu to return to the previous screen.

There are four types of object measurement mode:

1. Coarse object (easy to give out energy) (0.95);
2. Semi-matte object (0.80);
3. Semi-shiny object (0.60);
4. Shiny object (0.30);

The table of Emissivity Table:

Substance	Thermal Radiation	Substance	Thermal Radiation
Bitumen	0.90-0.98	Black cloth	0.98
Concrete	0.90	Human skin	0.98
Cement	0.96	Foam	0.75-0.80
Sand	0.90	Charcoal dust	0.96
Earth	0.92-0.96	Paint	0.80-0.95
Water	0.92-0.96	Matte paint	0.97
Ice	0.96-0.98	Black rubber	0.9
Snow	0.83	Plastic	0.85-0.95
Glass	0.90-0.95	Timber	0.90
Ceramics	0.90-0.94	Paper	0.70-0.94
Marble	0.94	Chromium Hemitrioxide	0.81
Gypsum	0.80-0.90	Copper Oxide	0.78
Mortar	0.89-0.91	Ferric Oxide	0.78-0.8
Brick	0.93-0.96	Textile	0.90

CUSTOMER SERVICE INQUIRIES

Your emails are important to us so we strive to reply all inquiries and emails within 24 hours.
In exceptional cases, we may require more time to respond. Thank you for your understanding.

For more information about our products and services, please send us an email:
cs@perfectprime.com

For B2B or project-based application, please send an email: sales@perfectprime.com

FOR MORE INFORMATION ABOUT PERFECT PRIME PLEASE VISIT OUR ABOUT US PAGE AND FEEL FREE TO BROWSE.



製品マニュアルページの QR コードをスキャンする (特定の製品で利用可能な多言語)
Scan QR Code for Product Registration (Multi-Language available for certain products)



Scan QR Code to check out our Youtube Channel for video manuals.

Retailer: HORMES LIMITED

Email: cs@perfectprime.com

Address: G/F UNIT 3, 61 GLENTHORNE ROAD, LONDON W6 0LJ UNITED KINGDOM

Telephone: +44 203 7695377