

# Thermal Imaging Camera IR0018 New Version

---

## Instruction Manual



**Perfect  
Prime**

[www.perfectprime.com](http://www.perfectprime.com)



## Contents

|  |         |
|--|---------|
| 1. Preface .....   | 2       |
| 2. Safety Instruction .....                                    | 2 - 5   |
| 3. Preliminary Acquaintance with Infrared Thermal Imager ..... | 6       |
| 4. Overview .....  | 7       |
| 5. Cleaning of the Products .....                              | 8       |
| 6. Lens Maintenance .....                                      | 8       |
| 7. Charging of the Battery and Description .....               | 9       |
| 8. Battery Installation .....                                  | 9       |
| 9. Performance Index .....                                     | 10 - 11 |
| 10. Product Description .....                                  | 12 - 14 |
| 11. Initial Operation .....                                    | 15 - 16 |
| 12. Introduction to the Menu .....                             | 17      |
| 1. "Image Overlapping" Submenu .....                           | 17      |
| 2. Introduction to "Image" Sub-menu .....                      | 18      |
| 3. Introduction to "Video" Submenu .....                       | 19      |
| 4. Introduction to "Color Palette" Sub-menu.....               | 20 - 21 |
| 5. Introduction to "Emissivity" Sub-menu .....                 | 22 - 24 |
| 6. Introduction to "Setting" Sub-menu .....                    | 25 - 28 |
| 13. Thermal Imaging Image Analysis Software .....              | 29 - 31 |
| Operation Guide  |         |



# 1. Preface

## 2. Safety Instruction

### 1. Preface

Respected users:

How are you! Thank you for purchasing our instrument. In order to use it in a better manner, we remind you to read the instruction for use carefully before use and keep it properly so as to look up in the future use.

### 2. Safety Instruction

Please ensure that you have read and understood the safety precautions described in the following text before using the product so that you can operate it correctly.

The safety precautions described in the following text guides you to operate the product and its accessories correctly and safely to avoid damage and loss to you, other people and the device.



### Considerations

Please observe the following guide in order not to damage the product:

#### **Don't assemble or dismantle the product without permission.**

The product is a type of super precise equipment. Don't try to dismantle, assemble or remodel any part of the product. Repair of the product should be made by technical personnel designated by the company.

#### **Avoid damage to probe of the product.**

Note: don't put the product close to strong heat source directly (such as electric iron). Otherwise, it may damage the probe of the product.

#### **Product hum.**

When the product works, there is light sound of clicking every several seconds. This is normal phenomenon that the lens captures images.



## 2. Safety Instruction



### Warning

The warning describes the acts that may cause harm to users. Please observe the following operation in order to avoid electric shock or personal injury.

**If the product case is damaged, don't use it continuously.**

Please contact the local distributors or agents of the company under such condition.

**During the process of use, if the product is found with smoke, spark and the burnt smell, please stop using at once.**

In case of such condition, the product power supply should be powered off first. After the smoke and peculiar smell disappears completely, please contact the local distributors or agents of the company.

**Don't remodel the adapter and the data line.**

Otherwise, such remodeling may cause short circuit or fire.

**Don't weld the battery without permission.**

Such operation may damage the battery and result in leakage and explosion of the battery.

**Avoid that the battery is impacted (such as collusion and falling, etc).**

Such condition may damage the battery case or result in that the battery leaks or explodes.

**Please pull off the adapter on the power socket when charging is not made.**

The adapter may get overheated if it is connected with power supply for a long time. This may cause overheating, deformation and fire.



## 2. Safety Instruction

### **Please ensure that the plug of the adapter is inserted into the specified power socket.**

The adapter plug may be different due to the regions. Please make confirmation whether the specification of the adapter is consistent with the specification of electric appliances in your region. Otherwise, this may cause overheating of the equipment, electric shock, fire, chemical leakage inside the battery, explosion and other serious consequences.

### **When the plug of the adapter or wire is damaged, stop using immediately.**

Don't change the battery unless the plug of the charger is inserted into the socket completely.

### **Do not touch the electric wire with wet hands.**

It is possible to cause electric shock when touching the electric wire with wet hands. When pulling out the electric wire, hold the electric wire head rightly to pull out the wire. Don't pull off the electric wire directly. Otherwise, the electric wire may be broken, causing electric shock and fire.

### **Forbid dip the product into water caught in rain.**

If the case contact with any liquid, please wipe it dry immediately. If water or other liquid enters the inside of the instrument, please power off the power supply at once. Continuous use may result in product damage.

### **Clean the dust on the adapter plug and the data line.**

When it is exposed to dusty and damp environment for a long time, the dirt surrounding the electric equipment will accumulate moisture. This may cause short circuit and fire.

### **Please use the original adapter of the company to charge the product.**

The use of non-original power supply accessories may cause equipment overheating, electric shot, fire, and leakage of chemicals inside the battery, explosion and other serious consequences.



## 2. Safety Instruction

### **Don't use abrasant, isopropanol or solvent to clean the enclosure of the device.**

Such operation may cause the product case to be damaged.

### **The product temperature may increase after a long time of charging.**

You may feel scorching heat when the hands touch the sensors.

### **Problem caused by water condensation.**

Don't bring the instrument into low temperature environment from high temperature environment in a short time or from low temperature environment to high temperature environment. This may result in that the inside of the instrument and appearance produce water condensation. In such condition, the instrument should be placed into portable box or plastic bag. Before use, make it restore to the environmental temperature and take it out to use.

If the product has water condensation inside, please power it off immediately. Otherwise, the instrument may be damaged. Operation is not allowed unless the water condensation disappears.

### **Avoid that the product is impacted (such as collision and falling, etc)**

Such operation may cause the product to be damaged. Please avoid such operation.

### **Long-time storage and regular charging.**

The product should be placed at a cool and dry environment if it not used for a long time. If the product installed with battery is stored for a long time, charging should be made regularly. Otherwise, the battery will run out and the service life will be shortened.



### 3. Preliminary Acquaintance with Infrared Thermal Imager

For a long time, infrared thermal imaging detection technology has become an important means to ensure Industrial safety in developed countries. The application field includes electric power, metallurgy, petro-chemistry, machinery, coal, traffic, fire control and national defense, etc. It can not only carries out real-time detection at high voltage, high current and high speed operation to perform real-time detection for production and instrument but also need not power off the power supply, stop the machine or stop the production to find the potential problems and prevent occurrence of malfunction. The "non contact" modern detection technology is safe, reliable and quick. It is a type of technical revolution compared with traditional contact detection method.

The infrared thermal imaging technology is widely used in the following fields:

- Power equipment, transmission, transformer line inspection;
- Hidden fire source search in fire protection;
- Personnel search and rescue in the fire, and fire command;
- Analyze the location and heat loss of leak points in heat pipes and heating equipment;
- Determining the location of the heating fault of the operating train;
- Security department night monitoring.



## 4. Overview

This product is an infrared camera that integrates surface temperature measurement and real-time thermal image. The traditional inferred thermometer needs to measure every component one by one while it is not necessary for infrared imaging camera, thus saving time. The potential problems may be displayed on color display screen clearly. Moreover, the central point measurement cursor is used to locate quickly and accurately to measure the temperature of the target object.

In order to increase the differentiation, the product is provided with a visible light camera. The thermal images and visible images are stored in the device and can be read through USB or stored in a computer to generate a report or for print. With small volume, the product is easy to operate and has strong function.

it is the ideal selection for electric power, electronic manufacturing, Industrial inspection and other fields.

The following major functions increase the product's accuracy and usability:

- The radiation coefficient may be adjusted to increase the measurement accuracy of objects with half reflection surface.
- The highest temperature and lowest temperature cursor may guide the users to the areas with highest and lowest temperature of the thermal images.
- The selectable color palette.





## 5. Cleaning of the Products

### 6. Lens Maintenance

#### 5. Cleaning of the Products

The shell of this product is cleaned with a damp cloth or diluted soapy water. Do not use abrasives, isopropyl alcohol or solvents to clean the lens and screen. Use professional optical lens cleaners.

#### 6. Lens Maintenance

##### Prevent damage of the infrared lens:


- Clean the infrared lens carefully. The lens is provided with refined anti-reflection coating.
- Don't clean with force to prevent damage of the anti-reflection coating. The selectable color palette.
- Use a cleaning solution for lens maintenance, such as alcohol-based commercial lens cleaners, alcohol, and a lint-free cloth or paper towel. Compressed air tanks can be used to remove loose particles.

##### Clean the lens:

- The compressed air tank or dry nitrogen ion gun (if applicable) may be used to blow the loose particles on the lens surface.
- Dip the lint free cloth in alcohol.
- Squeeze the excessive alcohol in the cloth or apply the lint free cloth on dry cloth lightly.
- Wipe the lens surface by making circular motion. Then discard the cloth.
- If it is necessary to repeat above step, please use new cloth to dip with the cleaning solution to wipe.

## 7. Charging of the Battery and Description

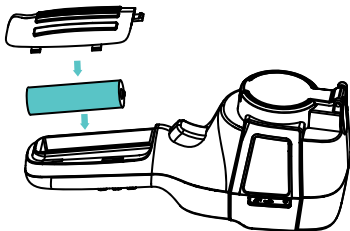
### Use USB data line to charge:

- The product has built-in chargeable lithium batteries.
- When the battery level is low, the top right of the screen will display "  "Please charge in time through Type-C USB interface (When the product is off, you can charge) .
- Pull off the USB line after fully charging.

### To make the lithium ion battery can play the perfect performance:

- Don't place the battery on the charger exceeding 24 hours.
- The thermal imaging device should be charged for two hours at least every three months so as to extend the battery service life to the greatest extent.
- Don't try to charge the battery in extremely cold environment.

## 8. Battery Installation



Take care to slide the battery cover into the correct position of the handle.



## 9. Performance Index

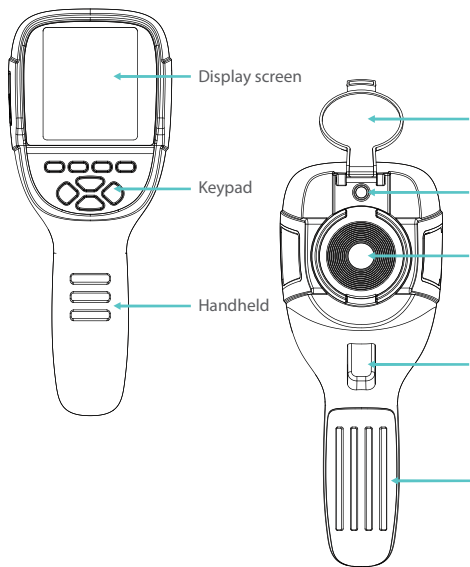
|                               |   |
|-------------------------------|---|
| Model                         | IR0018 New Version                              |
| Infrared resolution           | 256×192   |
| Field angle                   | 56°×42°   |
| Temperature measurement range | -20 to +550°C<br>(-4°F to 1022°F)               |
| Infrared detector type        | Vanadium Oxide Uncooled Infrared Focal Plane    |
| Thermal imaging frame rate    | ≤25Hz   |
| Focus mode                    | Fixed   |
| NETD                          | ≤50mK @25°C,@F/1.0                              |
| Infrared response band        | 8 to 14μm                                       |
| Cell size                     | 12μm  |
| Lens focal length             | 4.0mm   |
| Emissivity setting            | Adjustable from 0.01 to 1.00                    |
| Measurement accuracy          | -15°C to 550°C ±2°C or ±2%; -20°C to -15°C ±4°C |
| IFOV                          | 3.75mrad  |
| Temperature measurement mode  | Center point/hot and cold spot tracking         |
| Color palette                 | Rainbow, iron, cold color, white hot, black hot |
| Display size                  | 3.2-inch(240×320)                               |
| Image display mode            | Infrared/visible light/dual light fusion        |



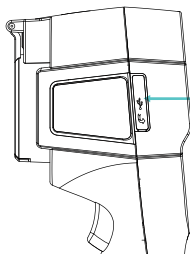
## 9. Performance Index

|                                |  |
|--------------------------------|--|
| Device storage                 | Built-in 8G (Actually available 6.6G)            |
| Storage Image/<br>Video Format | JPG/MP4  |
| Image/video<br>export method   | USB connection to computer export                |
| Image analysis<br>function     | Support offline analysis on PC                   |
| Menu language                  | English, Chinese, Italian, German                |
| Battery Type                   | Dedicated removable rechargeable lithium battery |
| Battery capacity               | 2000mAh  |
| Working time                   | 2 to 3 hours                                     |
| Power interface                | Type-C   |
| Power<br>configuration         | 5 minutes / 20 minutes / no automatic shutdown   |
| Work temperature               | -10°C to +50°C (14°C to 122°C)                   |
| Storage<br>temperature         | -20°C to +60°C (-4°F to 140°F)                   |
| Relative humidity              | 10% to 85%RH (non-condensing)                    |
| Product weight                 | 389g   |
| Product size                   | 90mm×105mm×223mm                                 |

## 1. Instruction to Structure

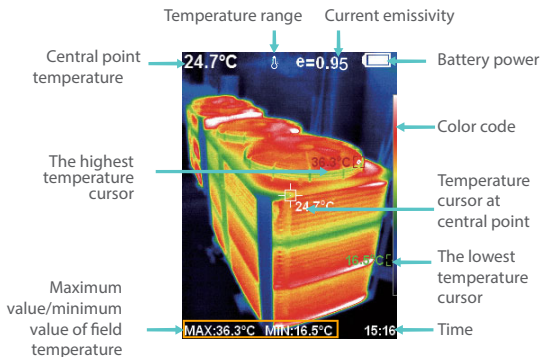


## 10. Product Description



Type-C USB  
Please open the cap in use

### 2. Display Description



## 10. Product Description

**Temperature range:** The range of temperature measurement.

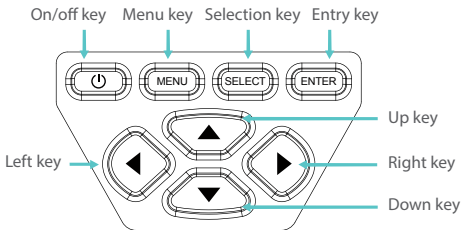
**Color code:** Used to mark the color corresponding to the relative temperature from low to high in the field of vision.

**The central point temperature cursor:** Used to indicate the central position in the screen area. The cursor color displays white. The temperature value is displayed top left corner of the screen.

**The highest temperature cursor:** Used to indicate the highest temperature position in the screen area. It will move with the movement of the highest temperature. The cursor displays red. The temperature value is displayed at bottom left corner of the screen.

**The lowest temperature cursor:** Used to indicate the lowest temperature position in the screen area. It will move with the movement of the lowest temperature. The cursor displays green. The temperature value is displayed at the central position of the screen.

### 3. Key Description





## 11. Initial Operation

### Product boot/shutdown

Press and hold the "⏻" button for more than 3 seconds to turn the Thermal Imaging on or off.

### LCD screen display

After turning on the power, open the lens protection cover, as shown in ②, the screen shows the thermal imaging status.

Note: Time adjustment may be required when you move the camera between environments with widely varying ambient temperatures.

### Witching between infrared thermal image and visible image

press "◀" or "▶" key to switch the degree of fusion between inferred thermal images and visible images (the degree of fusion is 0%, 25%, 50%, 75% and 100%).

### The function to hide highest/lowest temperature column at the screen bottom

Under the operation after normal start up, press "▲" key and the screen bottom will display highest/lowest temperature column. Press "▲" can also hide it.

### Image capture

Short press the image capture button. When the capture is successful, the screen will show the prompt "Save image?". If you want to select "Yes" at this time, please press the "MENU" button or short press the image capture button to save the image. If you want to select "No", please press the "SELECT" key to confirm that the image is not saved.

### Record video

Long press the image capture button, the screen will prompt "record video?". If you select "Yes" at this time, please press the "MENU" button or short press the image capture button to start recording. Press the "ENTER" key or long press the image capture key to end the recording. If you choose "No", please press the "SELECT" button to confirm not to record video.





## 11. Initial Operation

### Image output

The saved images through capture may be checked and output by connecting with a computer through Type-C USB.

### Read images

Open the USB protective cover as shown in ③. Use USB line to connect the USB port and then computer to read the images or save it into computers images or save it into computers. The supported operating system through verification includes: winxp, win7, win 8, win10, Apple system.

It is suggested to use the attached USB line or USB line with higher quality.

#### Note:

When connecting with a computer, pull off the data line after selecting “pop out device safely” to avoid causing file system damage and other problems. If “unable to save” and other problems occur, you may find the hard disc in the computer and fix it.



## 12. Introduction to the Menu


Press the left of " MENU " key and the menu bar appears. They are "Image registration", "Images", "Videos", "Color palette", "Emissivity" and "Settings" submenus.

### 1. "Image Registration" Submenu

#### 1.1. Description of Image Overlapping

Image overlapping makes it easier for users to understand the infrared images by using aligned visible images and infrared images. The use of image overlapping can capture the visible image of every infrared image so las to display the temperature distribution in the target region correctly and share with other people more effectively

#### 1.2. Application of Image Overlapping

Press the " MENU " button to enter the main menu, and select "  " (Image registration) in the main menu.

Press the " SELECT " button to enter the image overlap adjustment mode. Press the navigation keys (up, down, left and right buttons) to perform the visible image shift operation.

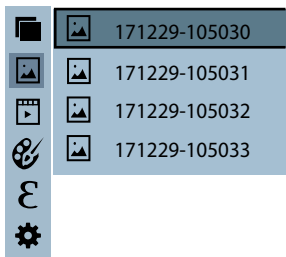
Press the " ENTER " button to exit the image blending mode (Note: If there is no operation for more than 6 seconds, the image blending mode will be automatically exited).

## 12. Introduction to the Menu

### 2. Introduction to "Images" Sub-menu

#### 2.1. View Image

Press the " MENU " button to enter the main menu, and select " " (images) in the main menu.



As shown in the figure, Then press " ► " key to enter image list. Press " " or " ▼ " key in navigation to select the image. Then press " SELECT " key to view image.

When viewing the images, press " ◀ " key to view the previous image,

Press " ► " to view the next image.

Press " ENTER " key to return. Press " MENU " key to exit from the menu.

## 12. Introduction to the Menu

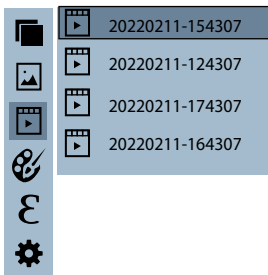
### 2.2. Delete Images

When viewing the images, the screen will show the prompt of "Delete photo" by pressing "▲" key. If "Yes" is selected at the moment, press "MENU" key to determine to delete the image. If "No" is selected, press "SELECT" key to determine not to delete the image.

### 3. "Video" Sub-menu

#### 3.1. View Video

Press the "MENU" button to enter the main menu, and select "🎬" (videos) in the main menu.



Press the "▶" key to enter the video list, press the "▲" "▼" keys in the navigation keys to select a video, and then press the "SELECT" key to view the video.

When viewing a video, press the "◀" button to view the previous video, and press the "▶" button to view the next video. When playing a video, press the "SELECT" button to pause playback, and press the "SELECT" button again to resume playback.

## 12. Introduction to the Menu

### 3.2. Delete Video

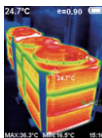
When viewing the video (if it is not playing), press the “▲” button, and the prompt “Delete video?” will appear on the screen. If you want to select “Yes” at this time, please press the “MENU” key to confirm the deletion of the video. If you want to choose “No”, please press the “SELECT” button to confirm not to delete the video.

## 4. Introduction to “Color Palette” Sub-menu

### 4.1. Color Palette Description

The palette can be used to change the pseudo-color display of the infrared image on the display. Some tune Swatches are better suited for specific applications and can be set up as needed. The palette is divided into: rainbow, iron, cool color, white hot, black hot, five palettes. These palettes work best with high thermal contrast and provide additional color contrast between high and low temperatures. Suitable selection of color palette displays the details of the target objective better. Rainbow, iron and cold color palettes focus on display of color. Such color palettes are very suitable for high heat contrast and are used to improve the color contrast between high temperature and low temperature. But the white hot and black hot color palettes provide even linear color.

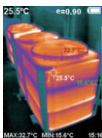
The following is the image of the same object with selection of different color palettes.



Rainbow



Iron



Cold color

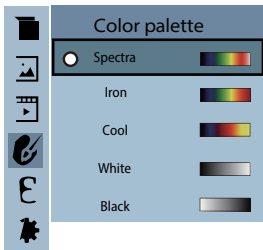


White hot



Black hot

### 4.2. Application of Color Palette



As shown in the figure, press "MENU" key to enter the main menu and select "🎨" (color palette) option and press "▶" key to enter the color palette list. Press "▲" and "▼" keys in navigation to select the color palette. Then press "SELECT" key to select the color palette. Press "◀" to return. Press "MENU" key to exit from the menu.

### 5. Introduction to “Emissivity” Sub-menu

#### 5.1. Emissivity Description

The emissivity of the product can be adjusted from 0.01 to 1.00 with the default value of 0.95. Many common objects and materials (such as timber, water, skin and textile fabric) can reflect the heat energy effectively. So it is easy to obtain relatively correct measurement value. The emissivity is usually set as 0.95 when the coarse objects that are easy to give out energy. For semi-matte objects that give out less energy, the emissivity is usually about 0.85 and the emissivity of semi-gloss objects is 0.6. The shiny objects are divided into materials with low radiation coefficient. The emissivity is usually set as 0.3 at the time of measurement. Correct setting of the value of emissivity is very important for you to carry out the most correct temperature measurement. The surface emissivity will produce giant impact on surface temperature measured by the product. Understanding the surface emissivity will enable you to obtain correct temperature measurement result.

#### 5.2. Emissivity Setting

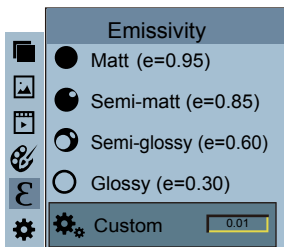
The product is provided with four types of object measurement modes:

- Matt (0.95)
- Semi-matt (0.85)
- Semi-glossy (0.60)
- Glossy(0.30)

According to the characteristics of the measured objects, users may set the emissivity value through the “self-define” option (please refer to the table of “emissivity of common materials”).

## 12. Introduction to the Menu

The operating step is as the following:



As shown in the figure, press "MENU" key to enter the main menu and select "ε" (emissivity) option and press "▶" key to enter the emissivity list.

Press "▲" and "▼" keys in navigation key to select the emissivity. Then press "SELECT" key to determine selection of the emissivity. Press "◀" key again to return.

If you select "self-defined" emissivity, press the "SELECT" button to enter the editing state. Press "◀"/"▶" keys to select the number to be changed, press "▲"/"▼" keys to change the value. After the modification is completed, press "ENTER" to confirm, then press "◀" to return. The "MENU" button exits the menu.



### 5.3. The Emissivity Value of Common Materials





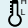
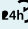


| Substance | Thermal radiation | Substance             | Thermal radiation |
|-----------|-------------------|-----------------------|-------------------|
| Bitumen   | 0.90~0.98         | Black cloth           | 0.98              |
| Concrete  | 0.94              | Human skin            | 0.98              |
| Cement    | 0.96              | Foam                  | 0.75~0.80         |
| Sand      | 0.90              | Charcoal dust         | 0.96              |
| Earth     | 0.92~0.96         | Paint                 | 0.80~0.95         |
| Water     | 0.92~0.96         | Matte paint           | 0.97              |
| Ice       | 0.96~0.98         | Black rubber          | 0.94              |
| Snow      | 0.83              | Plastic               | 0.85~0.95         |
| Ceramics  | 0.90~0.95         | Timber                | 0.90              |
| Glass     | 0.90~0.94         | Paper                 | 0.70~0.94         |
| Marble    | 0.94              | Chromium hemitrioxide | 0.81              |
| Gypsum    | 0.80~0.90         | Copper oxide          | 0.78              |
| Mortar    | 0.89~0.91         | Ferric oxide          | 0.78~0.82         |
| Brick     | 0.93~0.96         | Textile               | 0.90              |



## 12. Introduction to the Menu

### 6. Introduction to "Settings" Sub-menu

Press " MENU " key to select the " ▶ "(settings) option in the main menu.  
Press " ⚙ " key again to enter the "setting" sub-menu.

| SETTINGS  |                   |  |
|---|-------------------|--|
|  Auto shutdown ▶     | Auto shutdown     | NO<br>5min<br>20min  |
|  Intensity ▶         | Intensity         | Low<br>Medium<br>High  |
|  Language ▶          | Language          | English<br>Chinese<br>Italian<br>German                              |
|  Unit ▶              | Unit              | Celsius<br>Fahrenheit  |
|  Temperature range ▶ | Temperature range | Low (-20°C~120°C)<br>High (120°C~550°C)                              |
|  Time format ▶       | Time Format       | 24 hour<br>AM/PM   |
|  Set time ▶        | Set time          | Year 2020<br>Month 10<br>Day 26<br>Hour 02<br>Minute 52<br>Second 03 |
|  Spot ▶            | Spot              | Off<br>On  |



## 12. Introduction to the Menu

### 6.1. Auto Shutdown Setting

After entering the "Settings" sub-menu, select "⏻" (auto shutdown), press navigationThe "▶" button in the button enters the auto power off setting. Can be set to not automatically shut down or 5 points The clock is turned off or turned off in 20 minutes.

### 6.2. Intensity Settings

After selecting "☉" (intensity), press the "▶" button in the navigation key to enter the brightness setting. Can be set to low or medium or bright.

### 6.3. Language Settings

After selecting "🌐" (language), press the "▶" button in the navigation key to enter the language setting.

Available in 4 languages: English, Chinese, Italian, German.

### 6.4. Unit Setting

After selecting "°C" (unit), press the "▶" button in the navigation key to enter the temperature unit setting. Can be set to Celsius or Fahrenheit.

### 6.5. Temperature Range Setting

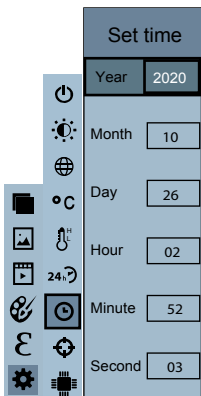
After selecting "🌡️" (temperature range), press the "▶" key in the navigation keys to enter the temperature range setting. Can be set to low temperature (-20°C to 120°C) or high temperature (120°C to 550°C).

### 6.6. Time Format Setting

After you select "🕒" (time format), press the "▶" key in the navigation key to enter the time format setting. Can be set to 24 hours or 12 hours.



### 6.7. Time Setting

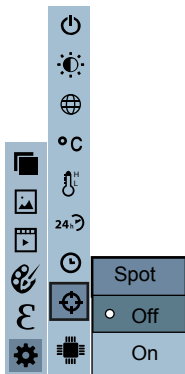
As shown in the figure, after selecting “⌚” (set time), press “▶” in the navigation key to enter the setting time.

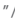




- Press “▲”/“▼” to select year/month/day/hour/minute.
- After selecting, press “SELECT” key to enter the edit state.
- Press “◀” and “▶” keys to select the figure to be changed.
- Press “▲”/“▼” key to change the value. After completing the change, press “ENTER” to enter.
- After the time setting is completed, press “▶” key to return.
- Press “MENU” exit from the menu.

### 6.8. Enable/Disable of the Highest and Lowest Temperature Cursor

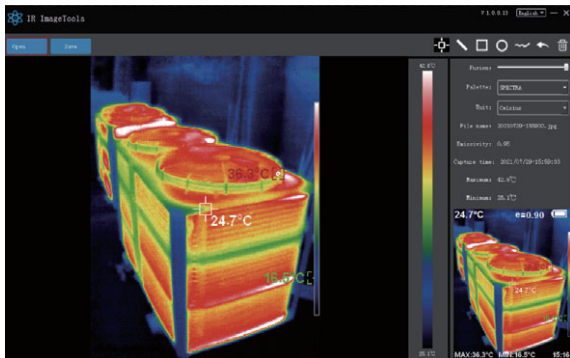
As shown in the figure, after selecting “” (spot), press the “” button in the navigation key to enter the cold hotspot setting.



- Press “” / “” key to select “off” or “on” the option.
- Then press “SELECT” key to determine selection.
- After the setting is completed, press “” key to return. Press “MENU” key to exit from the menu.

## Software Installation And Operation

1. Connect the product with a USB cable, and then connect to the computer. Open the removable disk in the computer, find the "INSTALLATION PACKAGE" folder and open it, and click to install the software.
2. After installation, open Enter the picture analysis software interface,click "Open File", and select the picture to be analyzed,as shown in the figure:












## 13. Thermal Imaging Image Analysis Software Operation Guide

### Interface Introduction

1. Select the language in the upper right corner of the interface, you can choose Chinese, English, and switch between the two languages.
2. On the right are shown as: fusion rate, color palette, temperature unit, picture information
  - Fusion rate: Moving the slider can realize the fusion of visible light image and infrared thermal image. The left end is a visible light image, and the right end is an infrared thermal image.
  - Palette: In the palette, click the "▼" icon to choose from five color palettes: rainbow, iron red, cold, white hot, black hot.
  - Temperature unit: In the temperature unit, click the "▼" icon to select three temperature units: Celsius, Fahrenheit, and Kelvin.
  - Picture information: display file name, emissivity, capture time, maximum temperature, minimum temperature, center point temperature, original thermal image.
3. "Open File" in the upper left corner of the interface, open the thermal image to be read. When you need to save the picture after the operation, click "Save"

(Note: the saved picture cannot be opened again with this software).

### Icon Introduction

1. " " icon, take the temperature of the thermal image.
2. " " icon, select the maximum temperature and minimum temperature of the thermal image in a straight line.
3. " " icon, select the thermal imaging map to select the maximum temperature and minimum temperature.
4. " " icon, circle the thermal imaging map to get the maximum temperature and the minimum temperature.
5. " " icon, arbitrarily circle the thermal imaging map to take the maximum temperature and the minimum temperature.
6. " " Return icon, when an operation error occurs, you can click this icon to return to the previous operation.
7. " " Delete icon, when you select multiple temperature values and need to cancel all of them, click Delete.



## CUSTOMER SERVICE INQUIRIES

Your emails are important to us so we strive to reply all inquiries and emails within **24 hours**. In exceptional cases, we may require more time to respond.

Thank you for your understanding.

For more information about our products and services, please send us an email:

**[cs@perfectprime.com](mailto:cs@perfectprime.com)**

For B2B or project-based application, please send an email:

**[sales@perfectprime.com](mailto:sales@perfectprime.com)**

FOR MORE INFORMATION ABOUT PERFECT PRIME PLEASE  
VISIT OUR ABOUT US PAGE AND FEEL FREE TO BROWSE.



製品マニュアルページのQRコードをスキャンする  
(特定の製品で利用可能な多言語)

Scan QR Code for the Product Manual page  
(Multi-Language available for certain products)



Tyche Smart Limited

[cs@perfectprime.com](mailto:cs@perfectprime.com)

2nd Floor, 107 Charterhouse Street,  
EC1M 6HW, London,  
England UNITED KINGDOM

+44 203 7695377

Retailer

Email

Address

Telephone