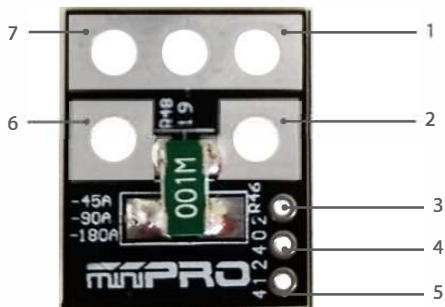


ELECTRONIC CONNECTIONS

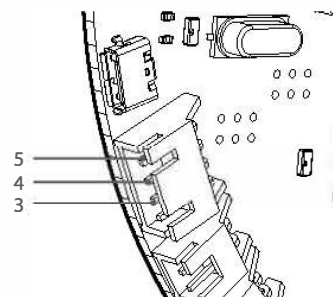
miniPRO A1 Voltage and Current Sensor Connection

Voltage and Current Sensor Diagram

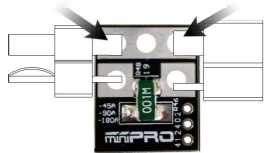


1. (-) ESC Conn. (Black)
2. (+) ESC Conn. (Red)
3. Electronic Board Conn. - Current
4. Electronic Board Conn. - Voltage
5. Electronic Board Conn. - Ground
6. (+) Battery Conn. (Red)
7. (-) Battery Conn. (Black)

Voltage and Current Board Diagram



1 Solder Connector

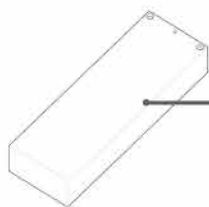


Solder connectors of your preference
OR 12 gauge wires

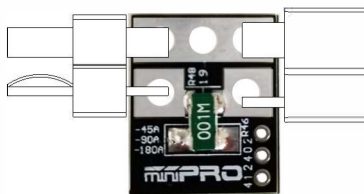
2 Connect Transmitter, Receiver, and ESC to the Motor

Please refer to the ESC, Transmitter, and Receiver manufacturers' instruction manual.

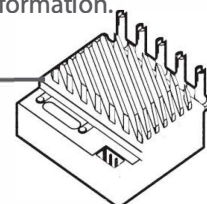
3 Connect Sensor



3.1. Connect the battery to the sensor's battery connector.

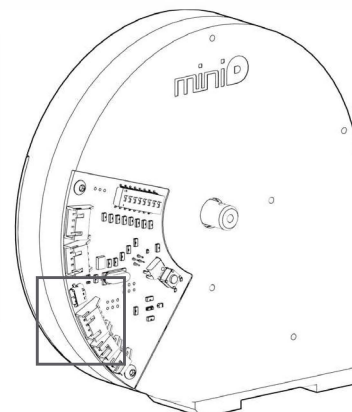
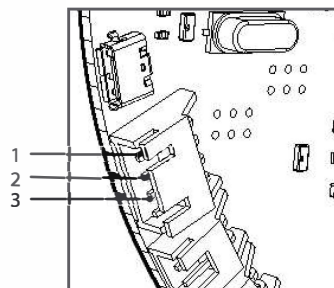
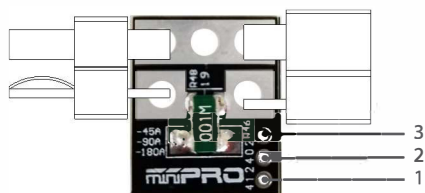


3.2. Connect the ESC's battery port to the sensor's ESC connector. See above sensor diagram for more information.



3.3. Turn ON the ESC and make sure it powers on. **If the sensor starts to overheat, disconnect the battery immediately.**

4 Connect Sensor to Electronic Board



Connect the sensor in the electronic board with the provided cable.