

# GMX

## LINE MARKER

### INSTRUCTION MANUAL & SPARE PARTS LIST



**turfmate**

e sales@turfmate.com.au • w turfmate.com.au • t 1300 184 400

# GMX – INSTRUCTIONS FOR USE

- **New battery may be partially charged, fully charge before use**
- **Ensure spray switch connected inside control box**

1. Ensure power turned off on both pump isolator switch (on control panel) and spray switch (on handle bar).
2. Unplug and remove 2 x connectors (top of paint tank). Remove paint tank (using front and rear recesses) by lifting out back first, then the front.
3. Make up paint mix (using paint concentrate and water). Pour into tank through integral basket filter.
4. Replace paint tank lid and place onto GMX machine, re-connecting both plug-in connectors (ensure matching sides-colour coded).
5. When closing bonnet with connectors attached to tank, carefully push surplus hose down back of tank to avoid restricting bonnet closure.
6. Fill cleaning bottle with tap water (located on top of control panel).
7. Ensure direction tap is set to Paint and recycle tap is set to spray.
8. The machine is now ready to mark a line.
9. Set the spray limit plates to the required line width. Ensure that the spray gun is set high enough for the paint spray to hit the limit plates.  
NB. To locate the spray head inside the frame – use the right-hand stub (from behind machine). To locate the spray-head outside the frame – use the left-hand stub (from behind machine).  
NB. For offset (left or right side) spray marking – use the extended spray bar (optional extra).
10. Turn on the pump isolator switch (located on control panel) – observe the volt meter reading (12 volts). If too low, place battery on charge.\*
11. To activate pump, use the button located on the handle bar. This can be used in the locked-on position or Hold-position (using a light finger touch).  
NB. The push button spray switch is positioned on the right side of the handle, this can be moved to the left side if required.
12. To clean the machine: Turn off pump. Turn the paint/water tap to water (located next to the water bottle inside control box).
13. Turn on paint spray switch (as when spraying paint) and water will appear at the nozzle. On sight of water, turn off. Also spray water whilst on the re-cycle mode (to clean re-cycle pipes). Remove and clean top-hat filter – inside spray head above the nozzle.

NB. A full water bottle should equal approx. 3 x cleans.

14. Should paint be left in the paint tank overnight, it can be agitated by using the recycle option on the tap inside the control box (to the right of the pump). Turn pump on as normal and the paint will re-circulate back into the tank. Turn off when fully re-mixed.
15. NB. For ease & weight of transporting the GMX, remove paint tank (if full). When disconnected, always place the tank connectors into the slots provided on underside of bonnet.

NB. Battery Charger Use Battery Charger provided. Place 3-pin plug into 240 volt mains socket. Plug other end (12 volt) into socket on side of Control Box. A full charge will take up to 10 hours. Full battery should operate pump for several days (dependent on use).

NB. Handle & Switch Handle height can be adjusted for comfort of user and can also be removed for ease of transportation.

NB. For handle removal, disconnect 2 x bullet connectors inside control box (terminals are both common & not sided)

## GMX – MAINTENANCE

1. During prolonged periods of non-use, the paint tank should be washed out manually and drained (using black rubber plug on rear of tank). Also clean the basket filter (in top of tank) and the paint filter (on end of paint suction tube).
2. Remove all 3 x plug-in connectors (2 on tank, 1 on spray hose coil) and lubricate with WD40 on a daily basis.  
NB. When not in use, leave the 2 x tank connectors disconnected & clipped to the underside of the bonnet.
3. During prolonged periods of non-use, disconnect the spray hose coil.
4. Keep control box interior free of water & paint. Remove any surplus / spillage by using small black rubber plug on the base of the control box.

### Technical Information:

Paint tank capacity. . . . .25L

Water bottle capacity . . . . .3.5L

Weight - Dry, No tank . . . . .27kg

# GMX – ACCESSORIES

1. Extended Spray Arm: Fit instead of standard spray arm, locate to the left or right of machine. Re-fit spray head to clear the front wheel. If used at the end of bar to left side, an extended spray coil hose may be required (available on request).
2. Hand Lance: To use the hand lance, first remove spray hose coil from connector & connect hand lance. Turn on paint spray (as if spraying paint). Hand lance is then controlled by its own trigger action.  
NB. Choice of fan or straight nozzle.  
NB. Take care not to operate spray switch with no connection, the male connector is NOT self-sealing.
3. Twin Jet Nozzle: Remove standard nozzle and replace, then operate spray as normal.
4. Running Track Guide: Fit to spray bar mounting post (other side to spray bar). Slide out until correct distance set between centre wheel and centre of nozzle.
5. Chemical Boom: Remove complete spray bar and detach spray head from connector. Attach the chemical boom L-shaped mounting brackets to both of the mounting posts on the GMX – using the double-box adapters provided (sided). Plug in to connector. Spray as normal.  
NB. Use of chemicals may require a separate paint tank to avoid cross-contamination. Available on request.
6. Running Track Double Spray Marker

# GMX - PARTS LIST

Part No.	Description
<b>Metal Work</b>	
1000X	Handle
1001X	Spray Bar (Standard)
1002X	Spray Bar (Long)
1003X	Spray Limit Plate
1004X	Gun Holder
1005X	Gun Top
<b>Plastics</b>	
1007X	Spray Switch Housing
994X	Paint Tank (only) - Replacement
994AX	Paint Tank Complete – (spare; chemical use)
995X	Bonnet
997X	Control Box Door
998X	Water Bottle
989X	Paint Tank Lid
BL/BD18	Paint Tank Drain Plug
	Control Box Drain Plug
<b>Pump &amp; Electrics</b>	
981X	Pump Complete
982X	Pump Diaphragm
983X	Battery Charger
993X	Battery
	Battery Securing Strap
992X	Battery Gauge
<b>Switches</b>	
984XA	Pump Isolator Switch
1032XA	Spray Switch (inc. cable & bullet connectors)
<b>Filters</b>	
990X	Tank Basket Filter
991X	Tank Hose Filter
166GM	Spray Housing Filter (Top-Hat)

# GMX – PARTS LIST CONTINUED

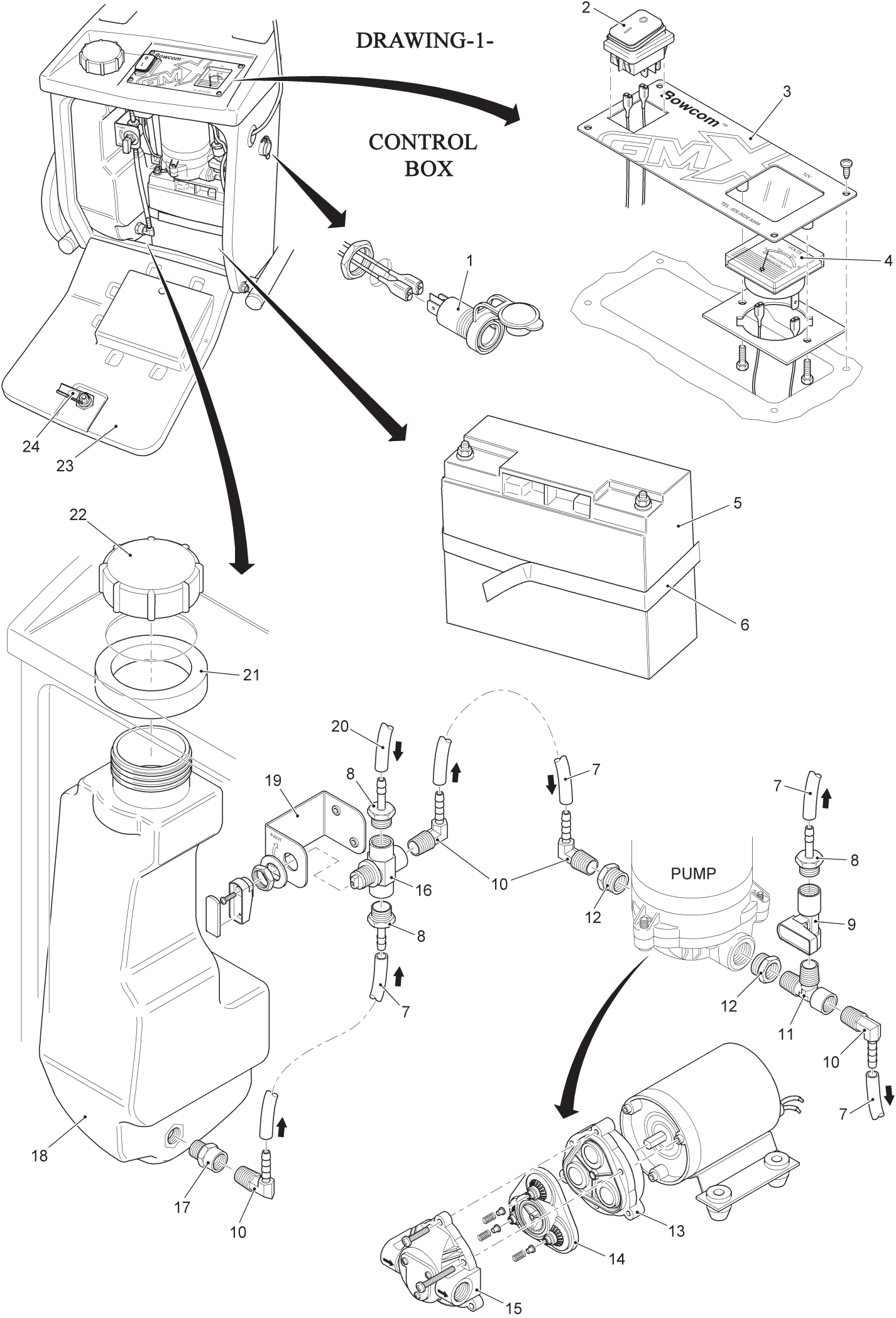
<b>Part No.</b>	<b>Description</b>
<b>Spray Head</b>	
712TK	Spray Housing
743TK	Union Nut
1016X	Nozzle
721TK	Spray Housing Connector
<b>Hoses</b>	
986X	Clear PVC Hose
987X	Spray Coil (Standard)
987XA	Spray Coil (Long)
987XB	Spray Coil (Track Spray)
<b>Control Components</b>	
1017X	Paint / Water Tap
720TK	Recycle Tap
1015X	Wheel (Pneumatic)
1014X	Wheel (Puncture Proof)
1020X	Snap-Connector (Male)
1019X	Snap-Connector (Female)
023ACP	Bonnet / Control Door Hinge Rod
24	M8 Star Wheel
1027X	Control Door Latch (Complete)
<b>Accessories</b>	
1030X	Bull-Bar Handles
1028X	4 – Head Chemical Boom
706/707TK	Hand Lance
021GM	Running Track Guide
1040X	Running Track Double Spray Marker
<b>GMX Spares Kit</b>	
1054X	Contains All Commonly Used Parts

# GMX - CONTROL BOX

Item No.	Part No.	Description
1	735TK	Charger Socket
2	984XA	Pump Isolator Switch
3	1008X	Dash-Board (inc. gauge plate)
4	992X	Battery Gauge
5	993X	Battery
6	-	Battery Securing Strap
7	986X	Hose (soft grade)
8	1021X	Hose Tail (straight)
9	720TK	Re-cycle Tap
10	1018X	Hose Tail (elbow)
11	1024X	T-Piece
12	56GM	Pump Reducer
13	984X	Pump Diaphragm Drive
14	982X	Pump Diaphragm
15	983X	Pump Upper Housing
16	1017X	Paint / Water Tap
17	988X	Water Bottle Reducer
18	988X	Water Bottle
19	1006X	Tap Bracket
20	986X	Hose (hard grade)
21	-	Water Bottle Foam Ring
22	-	Water Bottle Cap
23	997X	Control Box Door
24	1027X	Control Box Door Latch

DRAWING-1-

CONTROL BOX

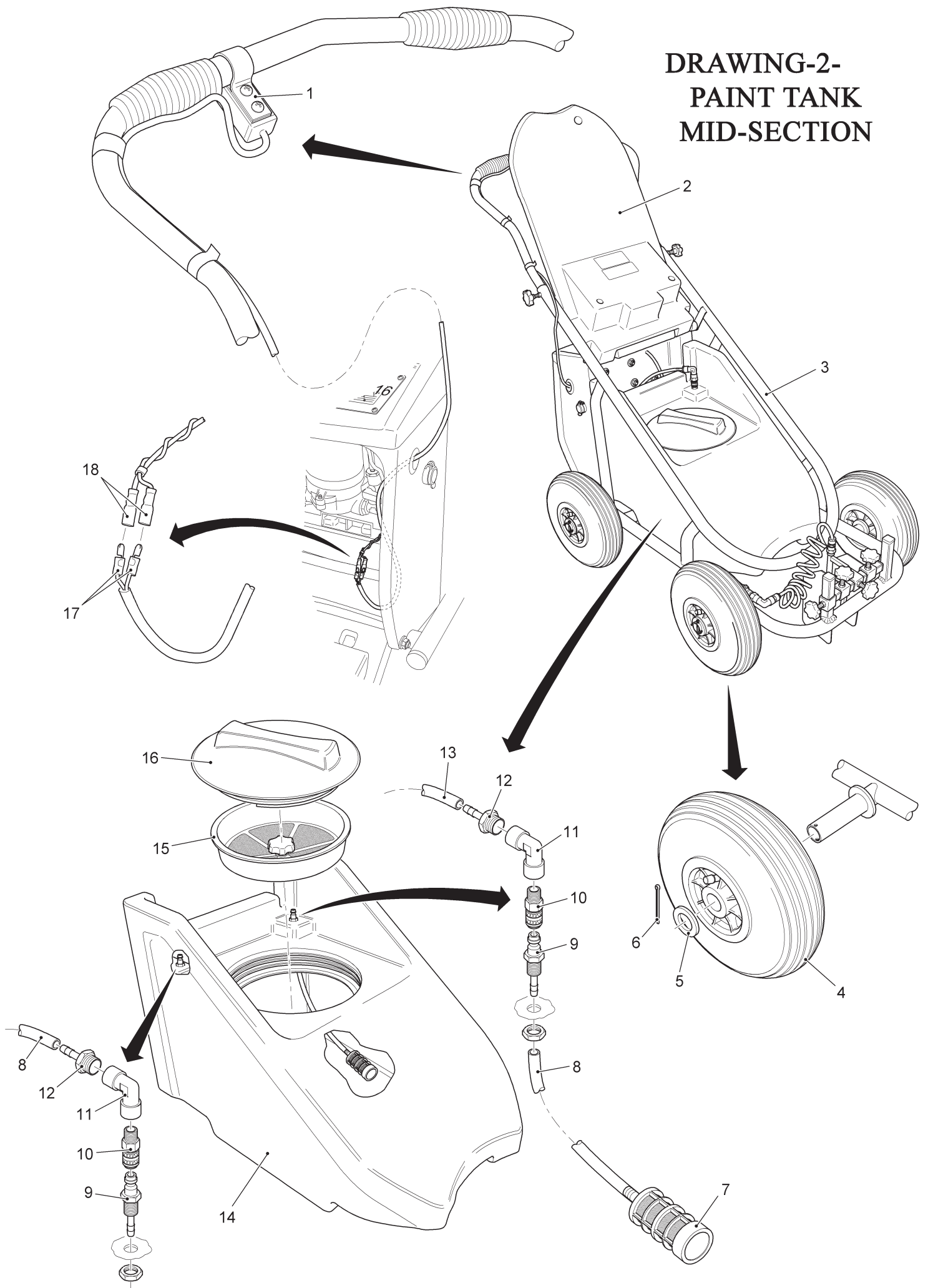




# GMX – PAINT TANK / MID-SECTION

Item No.	Part No.	Description
1	1032X	Spray Switch – c/w Cable & Connectors
2	995X	Bonnet
3	999X	Chassis
4	1015X	Wheel (inc. tyre)
5	-	Wheel Washer
6	-	Split Pin
7	991X	Tank Filter
8	986X	Hose (soft grade)
9	1020X	Male Snap Connector
10	1019X	Female Snap Connector
11	1023X	Female Elbow
12	1021X	Hose Tail
13	986X	Hose (hard grade)
14	994X	Paint Tank
	994AX	Paint Tank c/w Fittings
15	990X	Basket Filter
16	989X	Tank Lid
17	-	Bullet Connectors (pair) – Male
18	-	Bullet Connectors (pair) – Female

# DRAWING-2- PAINT TANK MID-SECTION



# GMX - SPRAY ASSEMBLY

<b>Item No.</b>	<b>Part No.</b>	<b>Description</b>
<b>1</b>	986X	Hose (soft grade)
<b>2</b>	1020X	Male Snap Connector
<b>3</b>	1019X	Female Snap Connector
<b>4</b>	1023X	Female Elbow
<b>5</b>	1022X	Spray Hose End
<b>6</b>	987X	Spray Hose Coil
<b>7</b>	72TK	Spray Housing Connector
<b>8</b>	1005X	Gun Top
<b>9</b>	1003X	Limit Plate
<b>10</b>	1004X	Gun Holder
<b>11</b>	1001X	Spray Bar (standard)
<b>12</b>	743TK	Union Nut
<b>13</b>	1016X	Nozzle
<b>14</b>	166	Top Hat Filter
<b>15</b>	712TK	Spray Housing Complete

# DRAWING - 3-

## SPRAY ASSEMBLY

