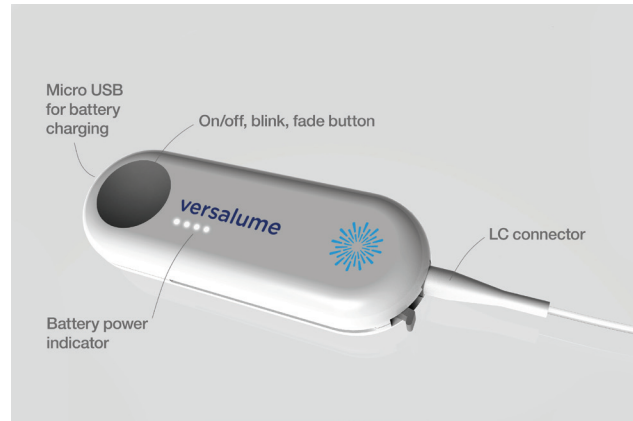




Single Color Wearable Module

Versalume's Wearable Module is available in three primary colors: red, green and blue. This compact module has an integrated laser and a microcontroller that operates in a variety of modes. Each Versalume Wearable Module comes with 2 meters of detachable, LC-connectorized Corning® Fibrance® Light-Diffusing Fiber. The module has three modes of operation: continuous, blink and fade. The mode of operation is chosen using a push button on the front of the module. The module is powered by a rechargeable battery that can be charged via a micro-USB type-B connector and a 5V power supply. Versalume's Wearable Modules come with a removable clip holder so it's ready to go with you.



Product Attributes

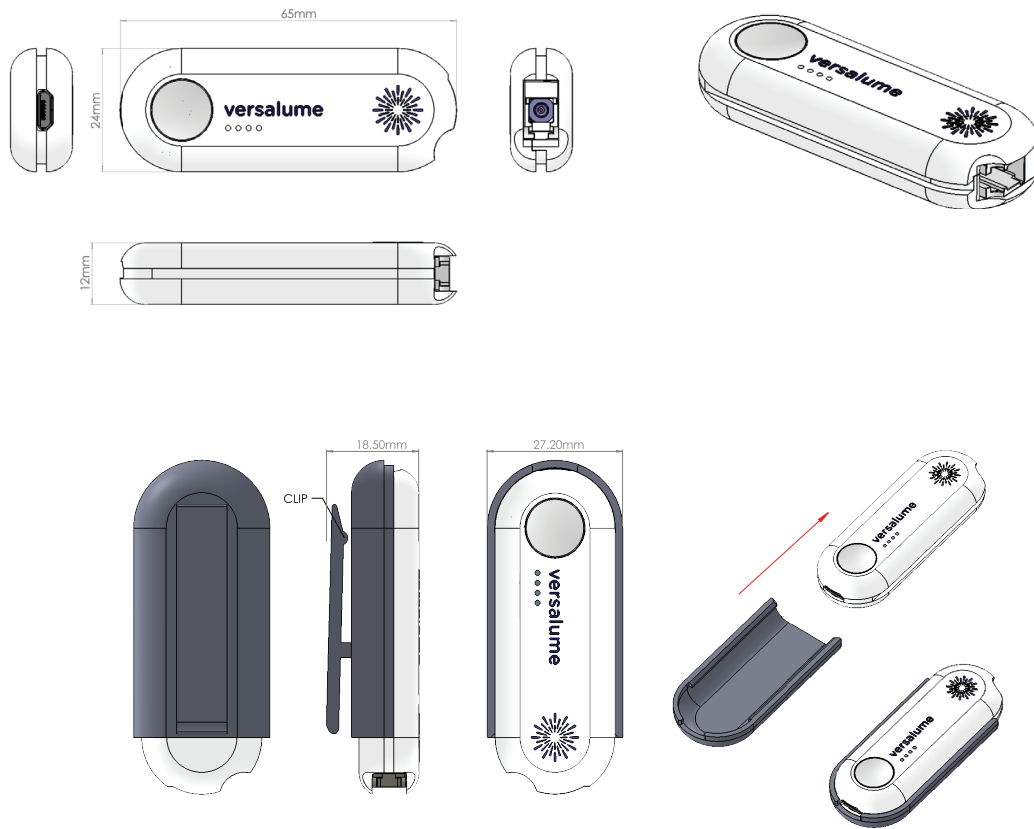
Optical and Electrical

Laser Color	Red	Green	Blue
Nominal Wavelength	639 nm	515 nm	450 nm
Laser Mode	Continuous Wave		
Fiber Coupled Power	<20 mW	<10 mW	<20 mW
Fiber Connector	LC		
Fiber Length	2 m		
Electrical Connector	Micro-USB type-B male / Rechargeable LiPo Battery		
Circuit Protection	Static, Surge, Reverse Polarity		

Environmental and Regulatory

Regulatory (pending)	CDRH Class IIIa (IEC Class 3R) Laser, ROHS Compatible
MTBF	6000 hrs at 25°C Nominal
Case Operating Temp Range	-10 to + 50°C
Storage Temperature Range	-20 to + 60°C

Mechanical Drawings



Note

Fiber must be attached to module at all times during operation. Avoid intentional exposure to direct or reflected light from fiber tip. To avoid damage to fiber on module, do not pinch or bend fiber around sharp corners. This laser product does not produce a collimated beam.


versalume
See the world in a different light

3964 Rivermark Place, Suite 151
Santa Clara, CA 95054
+1. 408. 813. 7434
www.versalume.com

For product questions
please email us at:
inquiries@versalume.com