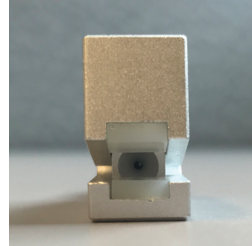
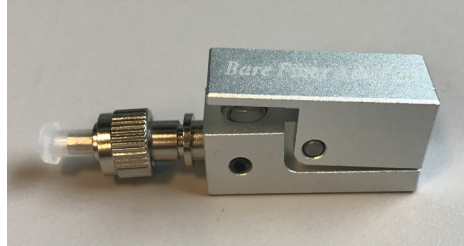


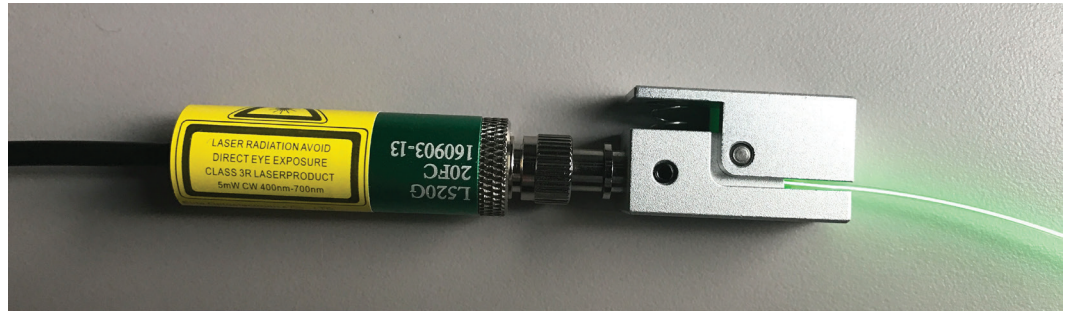
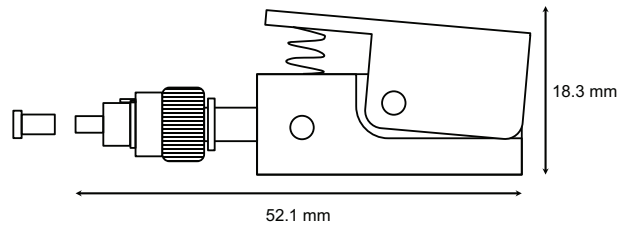
Bare Fiber Adapter



Unleash brilliant design possibilities using Bare Fiber Adapters. With a Bare Fiber Adapter you can prototype and illuminate Corning® Fibrance® Light-Diffusing Fiber with any color laser without the need for pre-connectorization. Maybe you want to add fiber to something but don't know exactly what fiber length you will need? With a Bare Fiber Adapter you can add the fiber to your design and determine how and where to illuminate the fiber afterwards. These Bare Fiber Adapters are FC terminated, so they work great with any of our Single-Color Lasers or Multi-Color Laser, as well as the lasers in our Developer Kit.

Product Attributes

Dimensions	52.1 mm (L) x 11.45 mm (W) x 18.3 mm (H)
Connector Type	FC
Housing Material	Nickel plated brass
Ferrule Material	Stainless Steel
Ferrule Inner Diameter	340 μm -0/+10 μm
Insertion Loss	≤ 1 dB
Repeatability	≤ 0.2 dB
Lifetime	≥ 1000 connections



Above is a picture of how you may use the Bare Fiber Adapter with a Single-Color Laser.

Note

Protective eyewear should be used when working with bare fiber. Please dispose of fiber scraps appropriately.

Visit [versalume.com/pages/how-to-videos](https://www.versalume.com/pages/how-to-videos) for a brief video demonstration of how to use this product.


versalume
See the world in a different light

3964 Rivermark Place, Suite 151
Santa Clara, CA 95054
+1. 408. 813. 7434
www.versalume.com

For product questions
please email us at:
inquiries@versalume.com