



Enjoy  
*peace of mind!*

*Exceptional Benefits of a*  
**CareCaller™**

**Help Alert SOS Button:** Up to 5 contacts receive urgent text alerts and calls instantly.

**Primary Caregiver Call Button:** Secondary call button on the side to call one caregiver for routine personal matters.

**Notifications of Important Events:** Receive text message alerts for low battery, falls, inactivity, wandering, and GPS location.

**Alert Caregivers of Possible Falls:** Notifies all contacts immediately if a fall is detected.

**Locate Loved Ones Anytime:** Real-time GPS location provides peace of mind.

**Add Complete 24/7 Protection:** Optional professional monitoring services available.

**Personal Assistance...**  
*at the touch of a button!*



*Anywhere, anytime – nationwide.*

**Get One Extra Month Service**  
**FREE**

Use promo code: \_\_\_\_\_

*Available from:*

© SafeGuardian, LLC. All rights reserved.



*Most Advanced 4G LTE Help Alert  
Call Button Available Anywhere!*



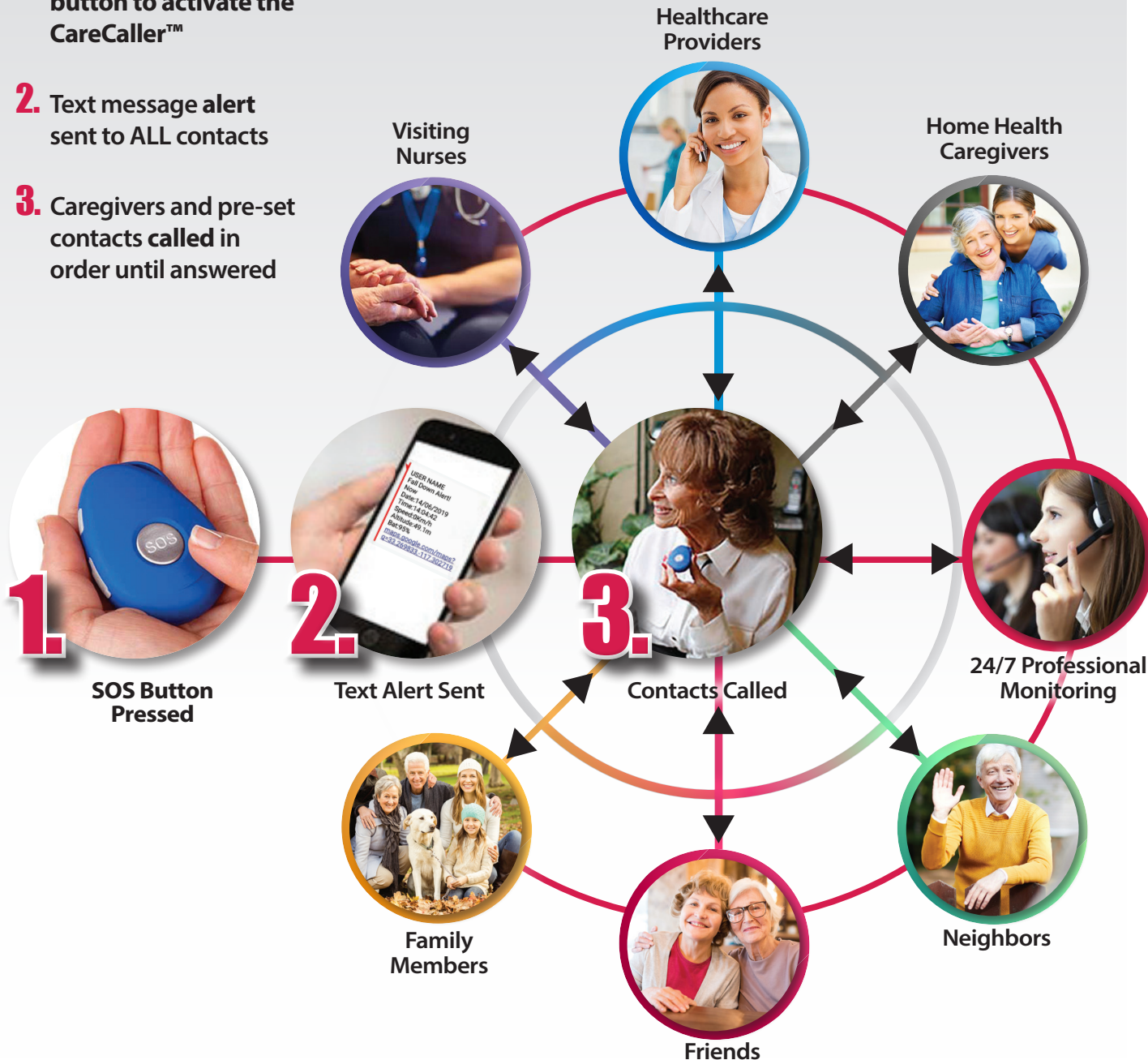
\*shown with optional charging station



**SafeGuardian™**  
Protecting All That You Love

# Help... at the touch of a button!

1. Press the SOS button to activate the CareCaller™
2. Text message alert sent to ALL contacts
3. Caregivers and pre-set contacts called in order until answered



Revolutionary  
One Touch  
Caregiver  
Call Button



## Exclusive Features of the CareCaller™

**One-Touch Help Alert:** Press the SOS button to immediately text & call up to 5 contacts.

**Fall Alert with Sensitivity Adjustment:** When a fall is detected, the device will immediately send text alerts/call all contacts.

**Two-Way Talk from the Pendant:** Built-in speaker and microphone allows for two-way communication between wearer and contacts.

**Call In and Chat:** Contacts can call the CareCaller™ anytime to speak with the wearer.

**Text Message Alerts:** All contacts receive text notifications for emergencies, falls, low battery, inactivity, wandering, and many more.

**Built-In, Real-Time GPS:** All CareCallers™ provide real-time location of the wearer, complete with Google Maps link.

**Update Settings & Contacts Anytime:** CareCaller™ settings can be changed by authorized contacts by sending a simple text message.

**Waterproof Device:** Most falls happen in the shower. Protect yourself or loved ones where it's most crucial.