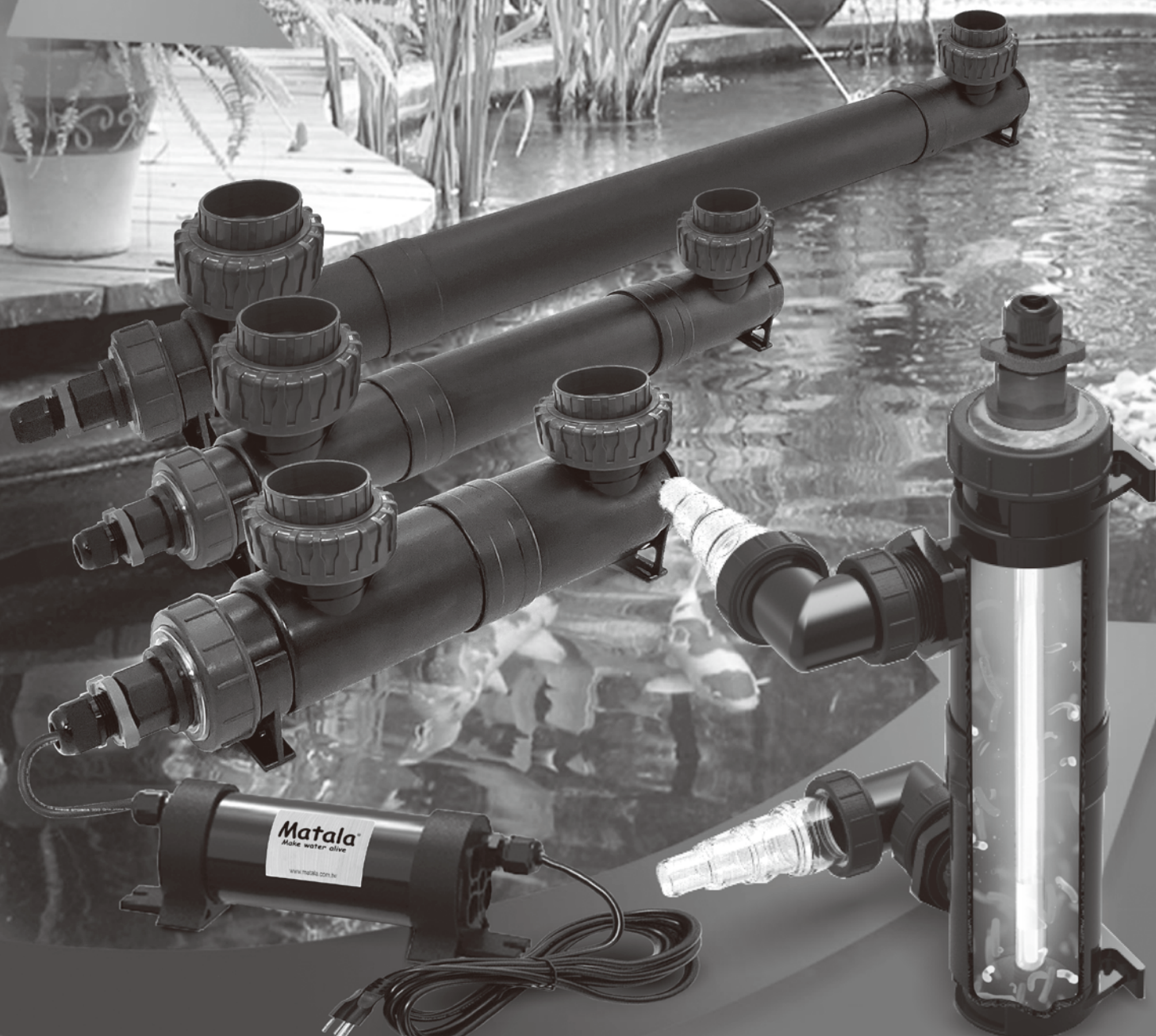


Matala[®]
Make water alive



EPA Est. No.98547-TWN-1

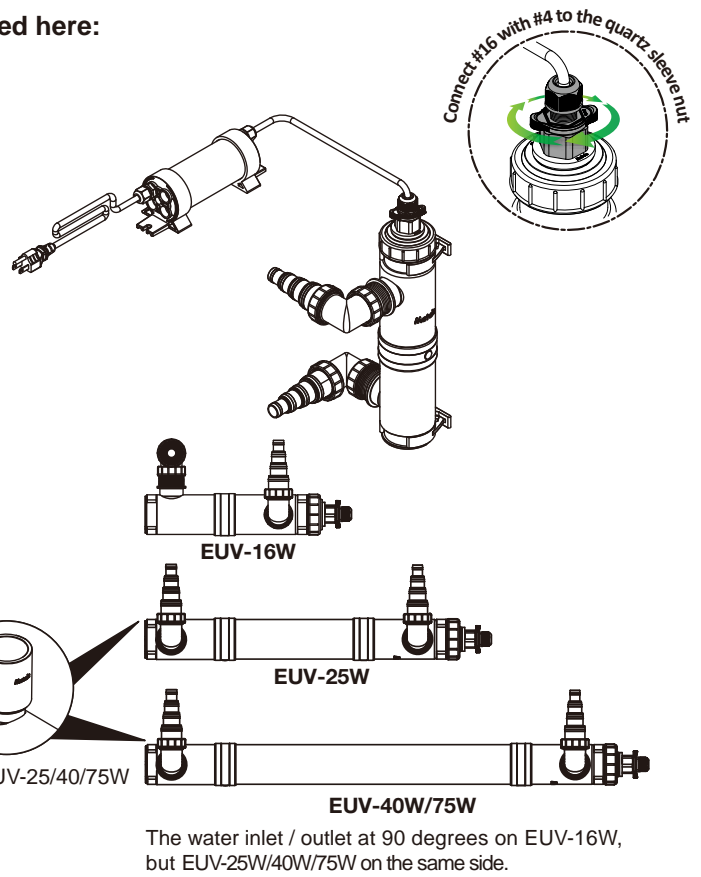
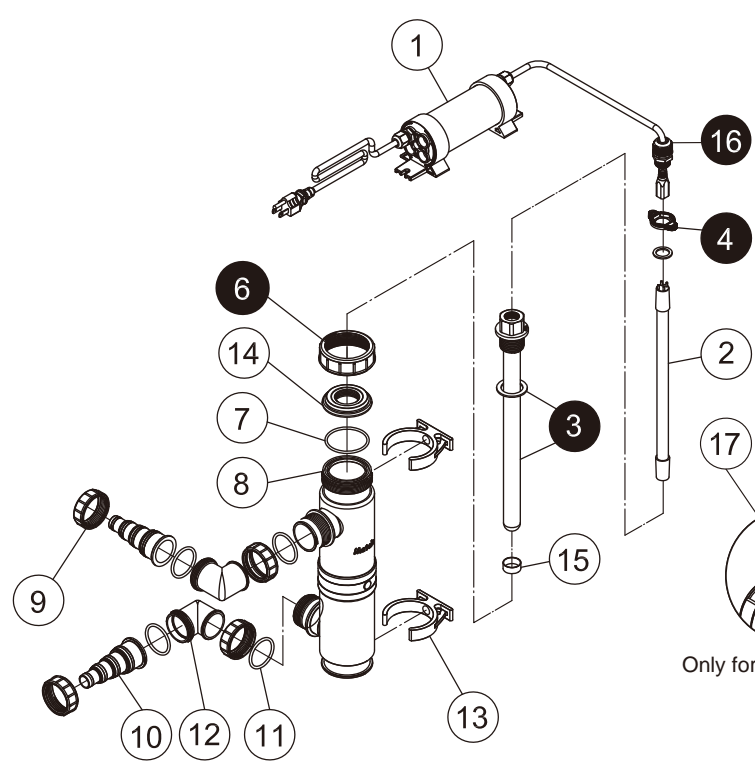
EzClear UV Clarifier




NOTICE

Before using EzClear UV Clarifier, please make sure that the quartz sleeve is not broken and all connectors / fittings are tightened. Once leaking is found, please stop using it in case of any accident.
Disconnect the power supply before any installation or maintenance, and do not pull the UV lamp up with the cable.
When using the EzClear UV Clarifier, always connect the power supply with ground fault circuit interrupter (GFCI).

1. Please check the box of **EUV** version contains the items listed here:





NOTICE

-Before using EzClear UV Clarifier, please make sure that the quartz sleeve is not broken and all connectors / fittings are tightened, especially:
3 Quartz Sleeve **4** Red Locking Ring **6** Blue Cap **16** Cable Gland.

-Do not submerge the ballast and do not place in a location where it will be flooded. Protect from excess water at all times.

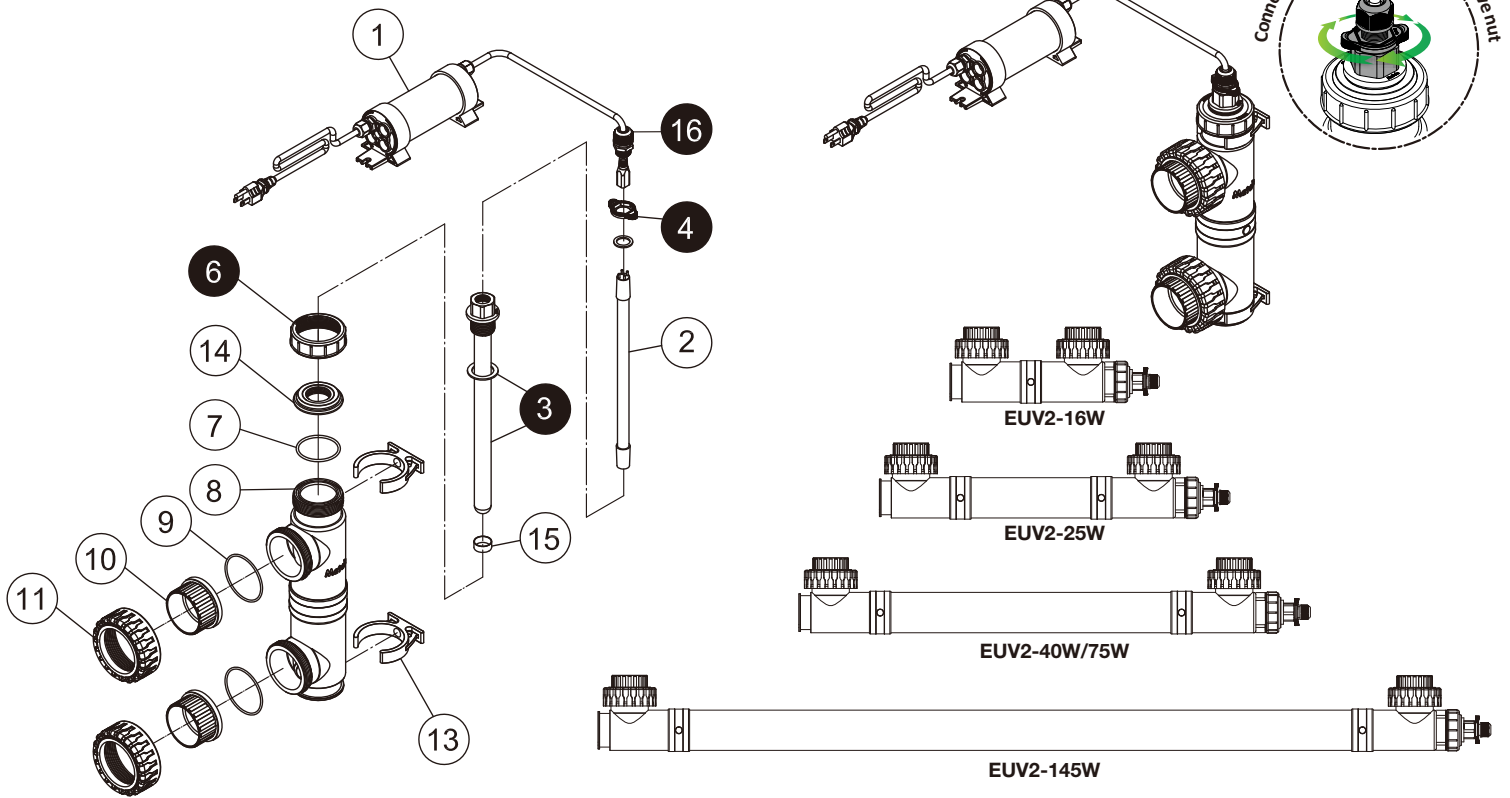
| EUV-16W/25W/40W/75W | | | |
|---------------------|-------------------|--|-----------|
| NO | Parts No | Parts / Spec | QTY |
| 1 | BLE-L16W | Ballast Unit (Include a Cable Gland 16) | 16W |
| | BLE-L25W | | 25W |
| | BLE-L40W | | 40W |
| | BLE-L75W | | 75W |
| 2 | TUV 16W 4P SE | Philips UV Lamp | 16W |
| | TUV 25W 4P SE | | 25W |
| | TUV 36T5 HE 4P SE | | 40W |
| | TUV 36T5 HO 4P SE | | 75W |
| 3 | QSE-L16W | Quartz Sleeve (Include a Gasket) | 16W |
| | QSE-L25W | | 25W |
| | QSE-L40/75W | | 40W / 75W |
| 4 | BS201026 | Red Locking Ring | 1 |
| 6 | SS100042 | Blue Cap 2" | 1 |
| 7 | BS201028 | O-Ring | 1 |

| NO | Parts No | Parts / Spec | QTY |
|----|-------------|--|-----------|
| 8 | SSAB101216 | Main Housing 1-1/2" Inlet & Outlet | 16W |
| | SSAB101225 | | 25W |
| | SSAB101275 | | 40W / 75W |
| 9 | BS201020 | Plastic Nut 1-1/2" | 4 |
| 10 | BS201021 | 4-Section Hose Barb 3/4", 1, 1-1/4", 1-1/2" | 2 |
| 11 | BS201024 | O-Ring | 4 |
| 12 | BS201019 | Elbow Adapter 1-1/2" | 2 |
| 13 | SS100052 | Clamp | 2 |
| 14 | BS201025 | Transparent Cover | 1 |
| 15 | PK-L40/300W | Gasket (only for 25W/40W/75W) | 1 |
| 17 | SS100059 | Clear Adapter 1-1/2"(FNPT)x1-1/2"(Slip) (only 25W/40W/75W) | 2 |



Quartz Sleeve.... 3 5 UV lamp..... 2 Ballast..... 1
 *Following instructions given in section **REPLACEMENT AND MAINTENANCE**.

2. Please check the box of **EUV2** version contains the items listed here:



NOTICE

-Before using EzClear UV Clarifier, please make sure that the quartz sleeve is not broken and all connectors / fittings are tightened, especially:

③ Quartz Sleeve ④ Red Locking Ring ⑥ Blue Cap ⑬ Cable Gland.

-Do not submerge the ballast and do not place in a location where it will be flooded. Protect from excess water at all times.

| EUV2-16W/25W/40W/75W/145W | | | |
|---------------------------|----------------------|---|-----------|
| NO | Parts No | Parts / Spec | QTY |
| 1 | BLE-L16W | Ballast Unit (Include a Cable Gland ⑬) | 16W |
| | BLE-L25W | | 25W |
| | BLE-L40W | | 40W |
| | BLE-L75W | | 75W |
| | BLE-L145W | | 145W |
| 2 | TUV 16W 4P SE | Philips UV Lamp | 16W |
| | TUV 25W 4P SE | | 25W |
| | TUV 36T5 HE 4P SE | | 40W |
| | TUV 36T5 HO 4P SE | | 75W |
| | TUV 64T5 HO 4P SE | | 145W |
| 3 | QSE-L16W | Quartz Sleeve (Include a Gasket) | 16W |
| | QSE-L25W | | 25W |
| | QSE-L40/75W | | 40W / 75W |
| | QSE-L145W | | 145W |

| NO | Parts No | Parts / Spec | QTY |
|----|-------------|------------------------------------|-----------|
| 4 | BS201026 | Red Locking Ring | 1 |
| 6 | SS100042 | Blue Cap 2" | 1 |
| 7 | BS201028 | O-Ring | 1 |
| 8 | SSAB101316 | Main Housing 2" Inlet & Outlet | 16W |
| | SSAB101325 | | 25W |
| | SSAB101375 | | 40W / 75W |
| | SSAB101345 | | 145W |
| 9 | SS100056-1 | O-Ring | 2 |
| 10 | SS100049-1 | 2" ANSI & JIS Slip Connector | 2 |
| 11 | SS100048-1 | Nut | 2 |
| 13 | SS100052 | Clamp | 2 |
| 14 | BS201025 | Transparent Cover | 1 |
| 15 | PK-L40/300W | Gasket (only for 25W/40W/75W/145W) | 1 |



Quartz Sleeve...③⑤ UV lamp.....② Ballast.....①

*Following instructions given in section **REPLACEMENT AND MAINTENANCE**.

ATTENTION**READ THIS MANUAL CAREFULLY BEFORE INSTALL AND KEEP IT FOR LATER REFERENCE.****Caution – might void warranty !!!**

- ECzClear UV Clarifier is not submersible.

Protect the unit and ballast from exposure to sun/heavy rain/snow.

- Do not cut/manipulate/alter power cable or plug and use extension cable.

- Make sure proper 120 voltage is present under load.

HOW TO USE PARTS OFFERED

This is an overview of the parts and different methods for connecting the UV-C.

1. The EUV 1-1/2" models 25w, 40w and 75w come with two options for hose connection.

1- Two 4-Section Hose Barbs.

2- Two Clear Adapter Fittings.

A The Clear Adapters can be used to connect to 1-1/2" PVC Sch 40 pipe. Use PVC glue to connect the clear adapter to PVC pipe.

B The 4-Section Hose Barb will connect to kink free or vinyl tubing with hose clamps (hose clamps not provide). Install 4-section hose barb directly, available in straight and 90° angular functions.

360° multi direction adjustment is more flexible to use.

Tips: Before connecting the 4-section hose barb, please cut (use a saw) the smaller section which is not fitted to the hose.

Tips: Use hose clamps to fix the hose. (Hose clamps are not included.)

2. **C** For the EUV(2") version, 2" half unions connect rigid PVC pipes. Use PVC glue to connect the half union to PVC Sch 40 pipe.

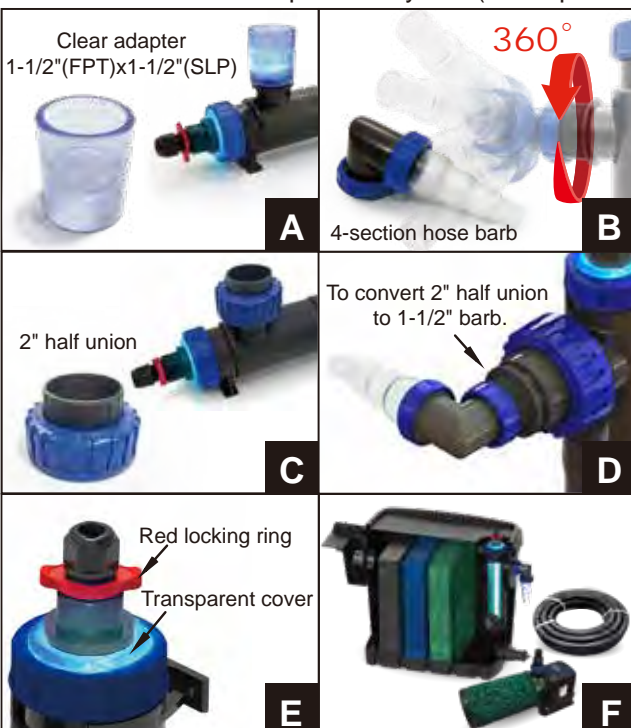
3. **D** You can also purchase a fitting bag to convert the 2" half union to a 1-1/2" barb.

4. **E** Red locking ring: Easy to replace the UV lamp without a wrench.

Transparent cover: Easy to see the status of the UV lamp.

Reminder: When you need to replace a new ballast, please keep the original red locking ring, because the new ballast is without the red locking ring.

5. **F** EUV-16W fits the Biosteps-II filter system (sold separately).

**INSTALLATION**

1. Attach the clamps to the main housing, and mount UV unit to the position you need.

2. Choose the inlet/outlet connectors as you need and tighten the connectors to the UV unit. For instance, use 2" half union with EUV2 models and clear adapter or 4-section hose barb for EUV models.

Tips: Please refer to **HOW TO USE PARTS OFFERED** on the EzClear UV Clarifier for more connector's information.



Leak Test: Before inserting the UV lamp into the quartz sleeve, turn on your water pump and allow water to run through the UV for 15 ~ 20 minutes to

NOTICE ensure there are no leaks at the quartz sleeve nut or blue cap. If no water leak then properly connect the UV lamp to the 4 pin UV lamp connector and insert into the quartz sleeve. Follow instructions to connect the Cable Gland 16 securely to the quartz sleeve cap. Failure to follow this leak test will void your warranty.

Ballast and UV lamp installation:

Notice: For EUV-16W, the UV lamp is already installed well. Please follow step 6.

Tips: **DO NOT** touch the UV lamp with bare hands. Use a clean soft cloth or gloves to handle the UV lamp and quartz sleeve.

Tips: **DO NOT** twist the white plastic part too hard when installation.

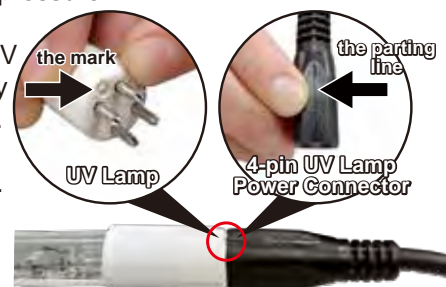
3. Align the UV lamp's 4-pins properly with the 4-pin UV lamp power connector.

Notice: The mark on the UV lamp plug must be in the same direction as the parting line on the 4-pin UV lamp power connector.

4. Plug the 4-pin UV lamp power connector to the UV lamp pins first. Use gentle pressure.

Tips: Avoid any angles when plugging the UV lamp, because it may damage the UV lamp.

5. Push together until almost no gap exists. Carefully slide the UV lamp into the housing through the nut.



Tips: If the UV lamp is too long or there is not enough installation space, you could also slide the UV lamp into the quartz sleeve firstly, then follow step 3.

6. Tighten the red locking ring by hand.

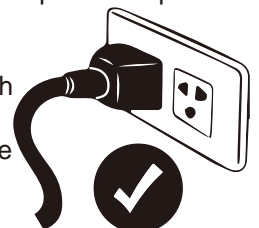
7. Plug the ballast into the wall outlet with GFCI. Test if the UV lamp is lighting.

Tips: If UV lamp does not light, please rotate the UV lamp's 4 pins 180 degrees and follow step 3.

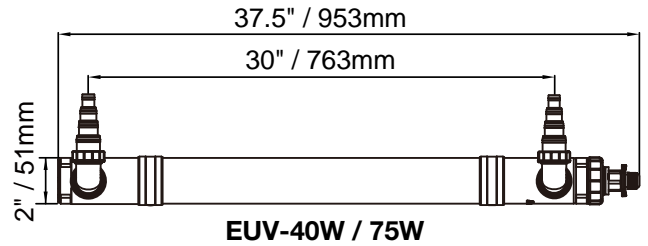
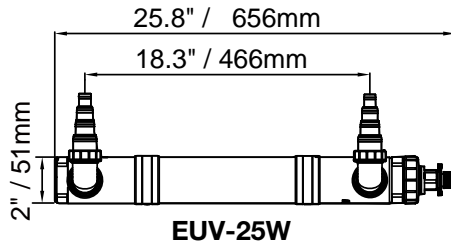
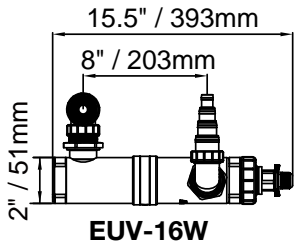
If UV lamp still does not light please contact your dealer.

8. Reverse this order when disconnecting.

Tips: Unplug the ballast from wall outlet first; then unplug the UV lamp from the 4-pin UV lamp power connector.

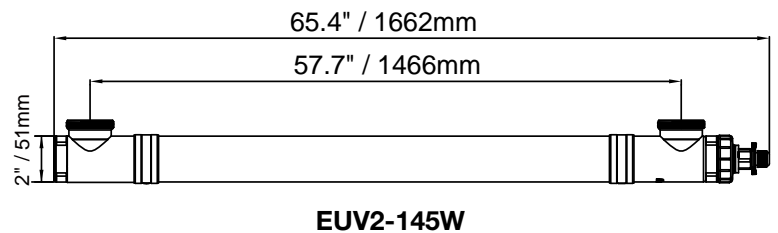
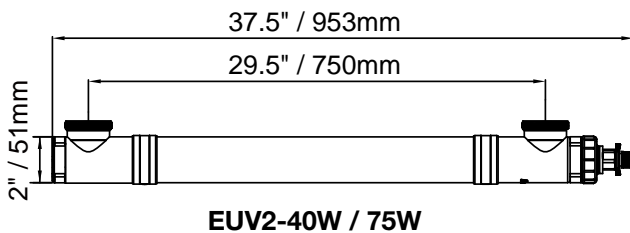
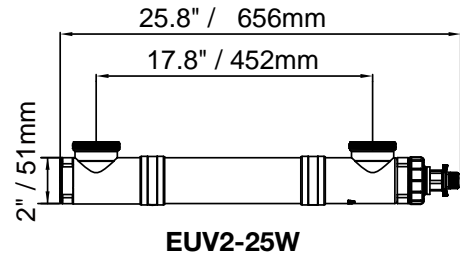
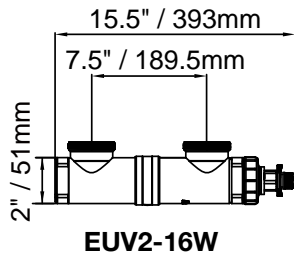


DIMENSIONS AND SPECIFICATIONS



| Spec. | Model | EUV-16W | EUV-25W | EUV-40W | EUV-75W |
|---|-------|-----------------------------------|------------|----------------|---------------------|
| Voltage | | 110-120V / 60Hz , 220-240V / 50Hz | | | 100-240V, 50 / 60Hz |
| 4-section hose barb or half union (in) | | 3/4", 1", 1-1/4", 1-1/2" barb | | | |
| Inlet & outlet connections (in) | | 1-1/2" | 1-1/2" | 1-1/2" | 1-1/2" |
| Recommend hose diameter (in) | | 3/4" , 1" | 1", 1-1/4" | 1-1/4", 1-1/2" | 1-1/4", 1-1/2" |
| Recommend flowrate up to | (GPH) | 1,600 | 2,000 | 3,500 | 5,000 |
| | (LPH) | 6,060 | 7,600 | 13,300 | 18,900 |
| Suitable for water garden pond volume up to | (gal) | 3,000 | 4,000 | 6,000 | 10,000 |
| | (L) | 1,1360 | 1,5200 | 22,700 | 37,850 |
| Suitable for koi pond volume up to | (gal) | 1,600 | 2,500 | 3,500 | 5,000 |
| | (L) | 6,060 | 9,500 | 13,300 | 18,900 |
| Dimensions: LxWxH | (in) | 8x2x16 | 8x2x26 | 8x2x38 | 8x2x38 |
| | (mm) | 194x51x393 | 194x51x656 | 194x51x953 | 194x51x953 |

• The above specifications are subject to change without prior notice.



| Spec. | Model | EUV2-16W | EUV2-25W | EUV2-40W | EUV2-75W | EUV2-145W |
|---|-------|-----------------------------------|------------|------------|---------------------|-------------|
| Voltage | | 110-120V / 60Hz , 220-240V / 50Hz | | | 100-240V, 50 / 60Hz | |
| 4-section hose barb or half union (in) | | 2" half union | | | | |
| Inlet & outlet connections (in) | | 2" | | | | |
| Recommend hose diameter (in) | | 2" | | | | |
| Recommend flowrate up to | (GPH) | 1,600 | 2,000 | 3,500 | 5,000 | 9,400 |
| | (LPH) | 6,060 | 7,600 | 13,300 | 18,900 | 35,500 |
| Suitable for water garden pond volume up to | (gal) | 3,000 | 4,000 | 6,000 | 10,000 | 18,800 |
| | (L) | 1,1360 | 1,5200 | 22,700 | 37,850 | 71,160 |
| Suitable for koi pond volume up to | (gal) | 1,600 | 2,500 | 3,500 | 5,000 | 9,400 |
| | (L) | 6,060 | 9,500 | 13,300 | 18,900 | 35,500 |
| Dimensions: LxWxH | (in) | 8x2x16 | 8x2x26 | 8x2x38 | 8x2x38 | 8x2x65 |
| | (mm) | 194x51x393 | 194x51x656 | 194x51x953 | 194x51x953 | 194x51x1662 |

• The above specifications are subject to change without prior notice.

INTEGRATION OF THE UV-C UNIT

When integrating the EzClear UV Clarifier into the pond's water recirculation and filtration system big particles or dirt must be prevented from entering the unit as this will reduce the clarifier's efficiency:

The UV-C should always be installed after the pump.

The various scenarios below are acceptable installations.

Water Flow Sequence:

- Pond => EZ-Bio => Pump => UV-C => Filter => Pond
- Pond => Pump => UV-C => Filter => Pond
- Pond => Bottom drain => Settling tank => Filter => Pump => UV-C => Pond
- Pond => Skimmer => Pump => Filter => UV-C => Pond
- Pond => Prefilter => Filter => Pump => UV-C => Pond

When installing the EzClear UV Clarifier in line, we advise to take care that it can be easily removed for servicing. Potential build-up of air pockets into the EzClear UV Clarifier in operation should be minimized as such may render the UV-C unit inefficient.

REPLACEMENT AND MAINTENANCE

UV lamp has a limited lifetime. Even the UV lamp is still on, it is suggested to replace UV lamp every 9000 hours or at least once per season. This guarantees that UV-C output will never fall below effective levels.

To ensure the high efficiency with best water quality, please check quartz sleeve regularly (Every 3 months. It depends on the water source quality). To see whether there are substances gathered, it will help you to judge and know how long it should be cleaned next time.

Tips: For temperate climates servicing can be done in wintertime.

Before any maintenance:

Disconnect the power supply and turn off the water pump to stop the influent water.

If the UV is installed, close all valves required to prevent draining water from the pond out of the UV during the maintenance process.

NOTE:

DO NOT touch UV lamp with bare hands. Use a clean soft cloth or gloves to handle the UV lamp and quartz sleeve.

●Replacement of UV lamp:

- a) Please loosen the red locking ring by hand and take out the UV lamp.
- b) Follow the installation of UV lamp as section **INSTALLATION**.

●Replacement or cleaning of quartz sleeve:

Replacement:

Tips: Inspect the quartz sleeve if any cracks or chips on either end. If it is cracked or chipped, please replace the quartz sleeve.

Tips: If you purchase a new quartz sleeve, it is without the gasket (15). Please keep the original gasket (15).

Tips: Do not let the quartz sleeve drop into the housing. This could cause breakage.

- a) Please loosen the red locking ring to take out the UV lamp first.
- b) Unscrew the blue cap 2" by hand. Then, unscrew the

original quartz sleeve from the blue cap. Remove the original gasket (15) and keep it.

Tips: Before remove the gasket (15), please make note of the gasket's position on the new quartz sleeve as it was on the original quartz sleeve.

- c) Attach the original gasket (15) to the new quartz sleeve, and screw the quartz sleeve back to the blue cap. Slide the quartz sleeve back to the main housing and tighten the blue cap.

Tips: Please align the quartz sleeve to the groove at the bottom of main housing.

- d) Slide the UV lamp to the new quartz sleeve and tighten the red locking ring by hand. Follow the installation of UV lamp as section **INSTALLATION**.

Cleaning:

To clean the quartz sleeve, unscrew the blue cap and use a soft cloth to clean the quartz sleeve.

●Replacement of ballast:

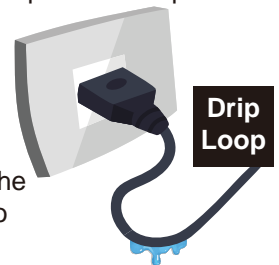
Tips: If you purchase a new ballast, it is without red locking ring (4). Please keep the original red locking ring (4).

- a) Please loosen the red locking ring by hand and disconnect the UV lamp.
- b) Remove the gasket on the cable gland and the red locking ring from the original ballast.
- c) Keep the original red locking ring.
- d) Remove the new ballast's gasket, and install the original red locking ring to the new ballast.
- e) Attach the new gasket and make sure the gasket is tightened.

Tips: The hexagonal groove of red locking ring is tightened toward the cable gland.

WARNINGS

- Only use the EzClear UV Clarifier as this manual recommends.
- Frequent starts and stops may shorten the life of UV lamps.
- Inspect the quartz sleeve if any cracks or chips on either end. If it is cracked or chipped, please replace the quartz sleeve.
- Always disconnect the power cable when it is not operation.
- The EzClear UV Clarifier's electrical plug should be plugged with ground fault circuit interrupter(GFCI).
- In case the EzClear UV Clarifier and/or its ballast are installed above an electric wall outlet, care must be taken that the power cable has a hanging loop below the power connection point (drip loop).
- Do not operate the equipment with damaged plug or power cable and never yank or pull the cable from an electrical outlet.
- Verify that hands are dry, and keep the plug and electrical connections dry to reduce the risk of electrocution.
- If by accident the EzClear UV Clarifier falls into the water, unplug the equipment from the electrical network immediately before taking it out of the water.
- The housing and ballast should not be located in low spots where water will collect. Protect the unit and ballast from exposure to sun/heavy rain/snow. Locate the ballast out of the direct sun and off the ground where it may flood. It is suggested to place the ballast in an area where is protected from splashing, flooding or dripping of water.
- This EzClear UV Clarifier can be installed outdoors or indoors. Please be aware, for preventing water to seep in,



the plastic nut with embedded electrical connection parts is securely installed out of the water.

- UV lamps produce harmful ultraviolet light and radiation. Never look directly at the UV lamp as damage to the eyes will occur.
- Do not operate the EzClear UV Clarifier for a prolonged time without water, because this will affect the lifetime.

WARRANTY

The Warranty is provided to the original purchaser of the product on the following terms:

Housing: Two years from the date of purchase.

Ballast: One year from the date of purchase.

Contact the nearest authorized EzClear UV Clarifier dealer for warranty service.

Matala EzClear UV Clarifier shall possess the sole right to determine whether to repair or replace defective equipment, parts or components.

THIS WARRANTY DOES NOT COVER DAMAGE DUE TO LIGHTNING OR OTHER CONDITIONS BEYOND THE CONTROL OF EZCLEAR UV CLARIFIER.

LABOR & COSTS: Matala EzClear UV Clarifier shall in no event be liable for the cost of field labor or other charges incurred by any customer in removing and/or re-fixing any Matala EzClear UV Clarifier product, parts or components.

THE WARRANTY DOES NOT APPLY TO ANY OF THE FOLLOWING:

- To defects or malfunctions resulting from failure to properly install, operate, or maintain the unit in accordance with printed instructions provided.
- To failures resulting from abuse, accident, overloading, or negligence.
- Any modification made by the purchaser to the product will cause the warranty to be null and void.
- To units which are not installed in accordance with applicable local codes, ordinances, and good trade practices.
- If the unit is used for purposes other than for what it is designed and manufactured for.
- If the unit or components have been tampered with or modified in any way by an unauthorized dealer or repair shop.
- Warranty does not include ② UV lamp and ③ Quartz Sleeve of EzClear UV Clarifier. The parts can be obtained from an authorized dealer.
- EzClear UV Clarifier is not submersible. Protect the unit and ballast from exposure to sun/heavy rain/snow.
- Do not cut/manipulate/alter power cable or plug and use extension cable.
- Make sure proper 120 voltage is present under load.

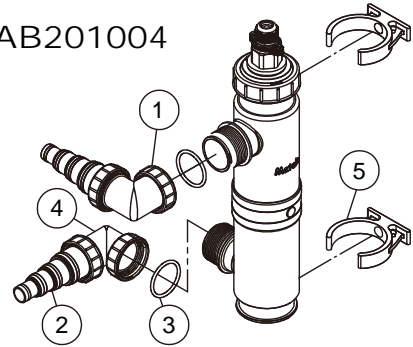
SPECIFICALLY DISCLAIMS THE IMPLIED WARRANTIES OF MERCHANTABILITY AND FITNESS FOR A PARTICULAR PURPOSE AFTER THE TERMINATION OF THE WARRANTY PERIOD.

Fitting Bag for Replacement

BSAB201004 : For EUV-16W~EUV-75W

| NO | Parts No | Parts / Spec | QTY |
|----|----------|--|-----|
| 1 | BS201020 | Plastic Nut 1-1/2" | 4 |
| 2 | BS201021 | 4-Section Hose Barb 3/4",1,1-1/4",1-1/2" | 2 |
| 3 | BS201024 | O-Ring | 4 |
| 4 | BS201019 | Elbow Adapter 1-1/2" | 2 |
| 5 | SS100052 | Clamp | 2 |

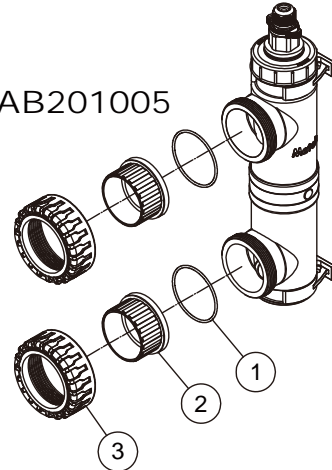
BSAB201004



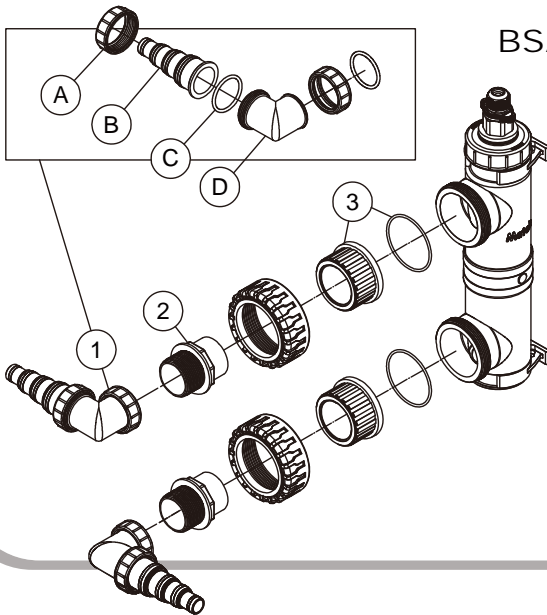
BSAB201005 : For EUV2-16W~EUV2-145W

| NO | Parts No | Parts / Spec | QTY |
|----|------------|------------------------------|-----|
| 1 | SS100056-1 | O-Ring | 2 |
| 2 | SS100049-1 | 2" ANSI & JIS Slip Connector | 2 |
| 3 | SS100048-1 | Nut | 2 |

BSAB201005



BSAB201006



BSAB201006 : For EUV2-16W~EUV2-145W Convert the 2" Half Union to 1-1/2" Barb

| NO | Item | Parts No | Parts / Spec | QTY |
|----|------|------------|--|-----|
| 1 | A | BS201020 | Plastic Nut 1-1/2" | 4 |
| | B | BS201021 | 4-Section Hose Barb 3/4",1,1-1/4",1-1/2" | 2 |
| | C | BS201024 | O-Ring | 4 |
| | D | BS201019 | Elbow Adapter 1-1/2" | 2 |
| 2 | | BS201022 | Male Adapter 1-1/2" | 2 |
| 3 | | SS100056-1 | O-Ring | 2 |
| | | SS100049-2 | 1-1/2" ANSI Slip Connector | 2 |

Distributed by.....



MATALA WATER TECHNOLOGY CO., LTD.
www.matala.com.tw