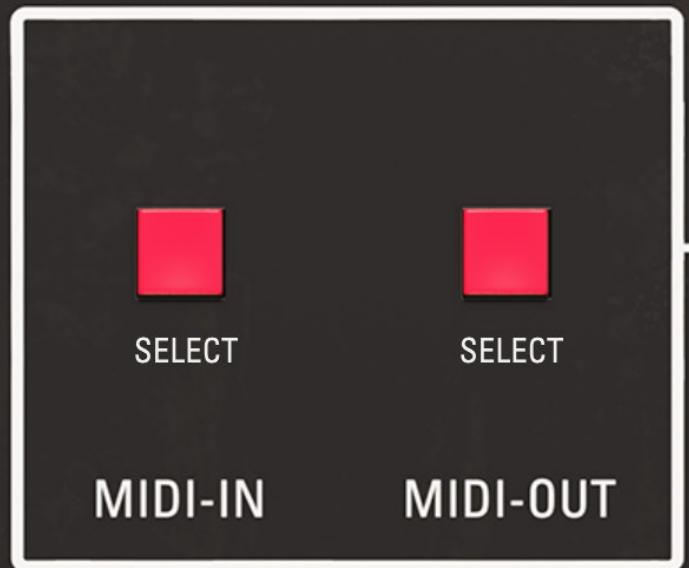


# LALALAND



# Introduction

CS Series Midi Kit:

## Tools needed

Philips screwdriver  
3.5mm drill for screws  
(Optional 3mm tap drill)  
15mm step drill

## Content

- CS MIDI board
- 1x3 pin power cable (RED, BLUE, BLACK)
- 1x6 pin keyboard cable (MULTICOLORED)
- 1x7 pin keyboard cable (MULTICOLORED)
- 1x2 pin filter control cable (ORANGE, PURPLE)
- 2x prewired MIDI sockets plus 4x screws & 4x nuts
- 4x plastic standoffs
- 1x MIDI connector sticker (Used as drilling template)

# The CS Filter Modulator

[Check out our plugin for the CS series - click here](#)



# Installation

The CS Midi board is installed between the keyboard and the key assigner board and therefore requires only 2 cables to solder (Filters). Removal of the key assigner is not required. *Although we suggest calibrating the synth before install, recalibration after install is not required.*

Midi connectors will require drilling using the drill template/sticker.

To open the CS20M remove the 7 screws on the bottom.

**Make sure to disconnect synth from mains before proceeding with installation!**



Follow the step by step instructions in the following pages to install your CS MIDIKIT.



## MIDI connectors installation

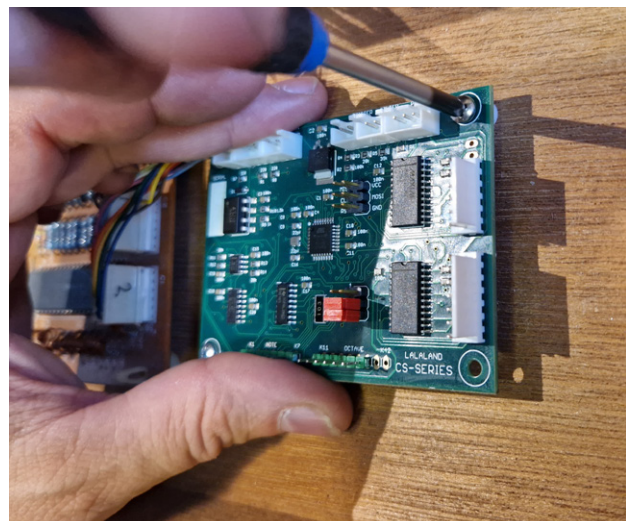
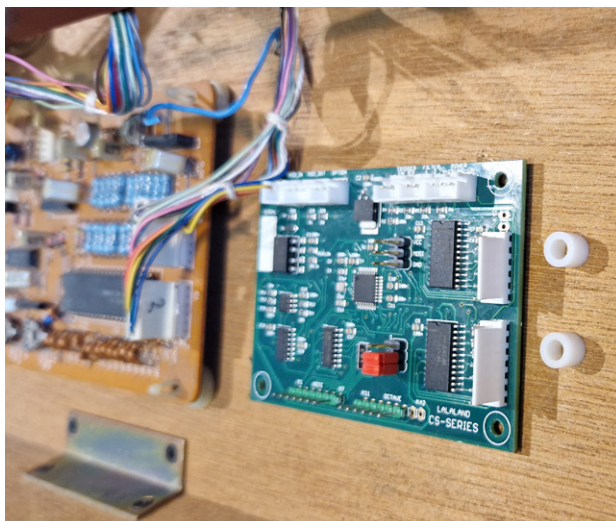
Start by drilling and mounting the midi connectors using the midi sticker as a template, place the sticker in the desired location and fasten at the top with tape and mark the center X's. Next lift up the sticker while the tape holds it in place and drill the holes for the midi connectors.

Place the midi connectors in the slots and mark where to drill for the screws., after drilling remove the backing from the sticker and fasten it in place. Cut out the holes in the sticker, an 8 cut "pizza" cut works great. Place midi connectors and fasten with screws. See images below.(Alternatively you can print out and use the MIDI template on the last page).

NOTE: MIDI In connector has two wires and MIDI Out has three.



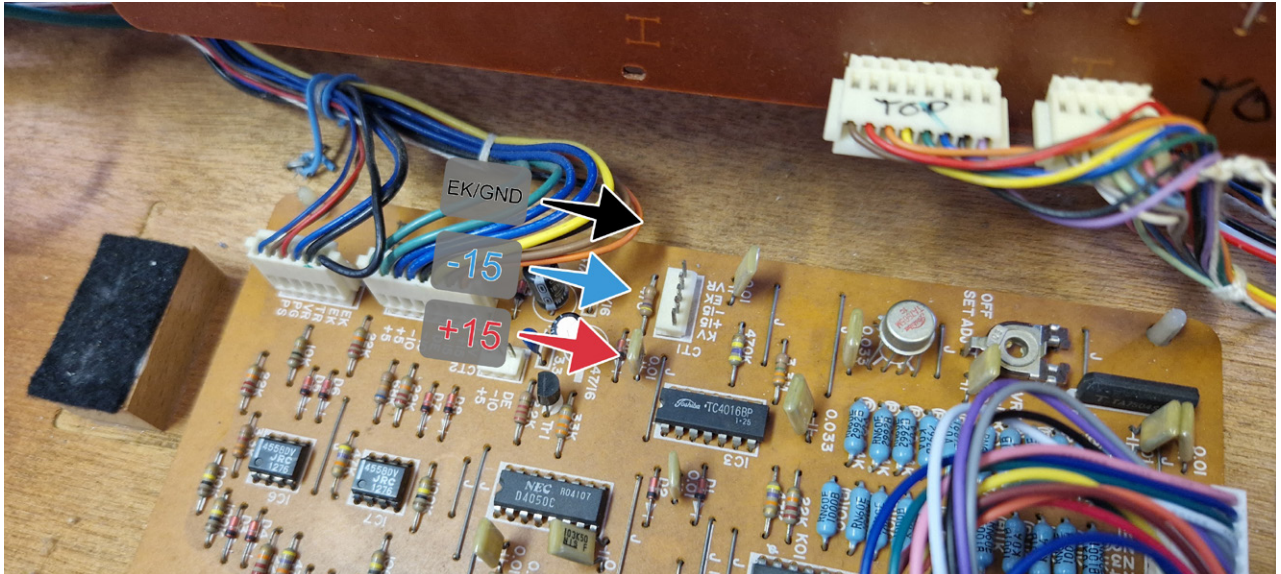
The board is placed on the right side to the SSK/Key Assigner board under the keyboard. Lift up the keyboard, and place the midi kit as shown in image below. Screw the board in place using the plastic standoffs.





Connect the power cables

Locate the 5 pin connector (+15, -15, GND/EK) on the board as shown in the image (SSK board, bottom of the synth, under keyboard).

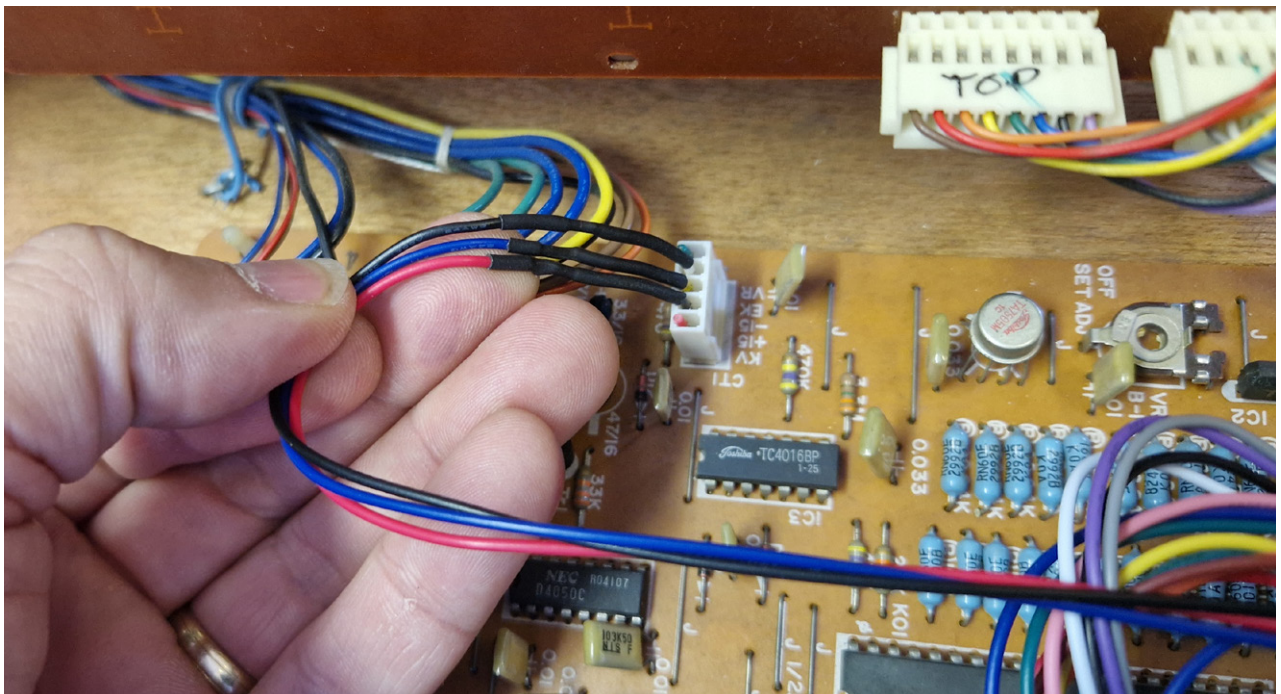


Using the 3 Wire (Red, Black, Blue) power cable, insert the connector while taking care of the correct orientation.

**NEG/BLUE** is the -15V.

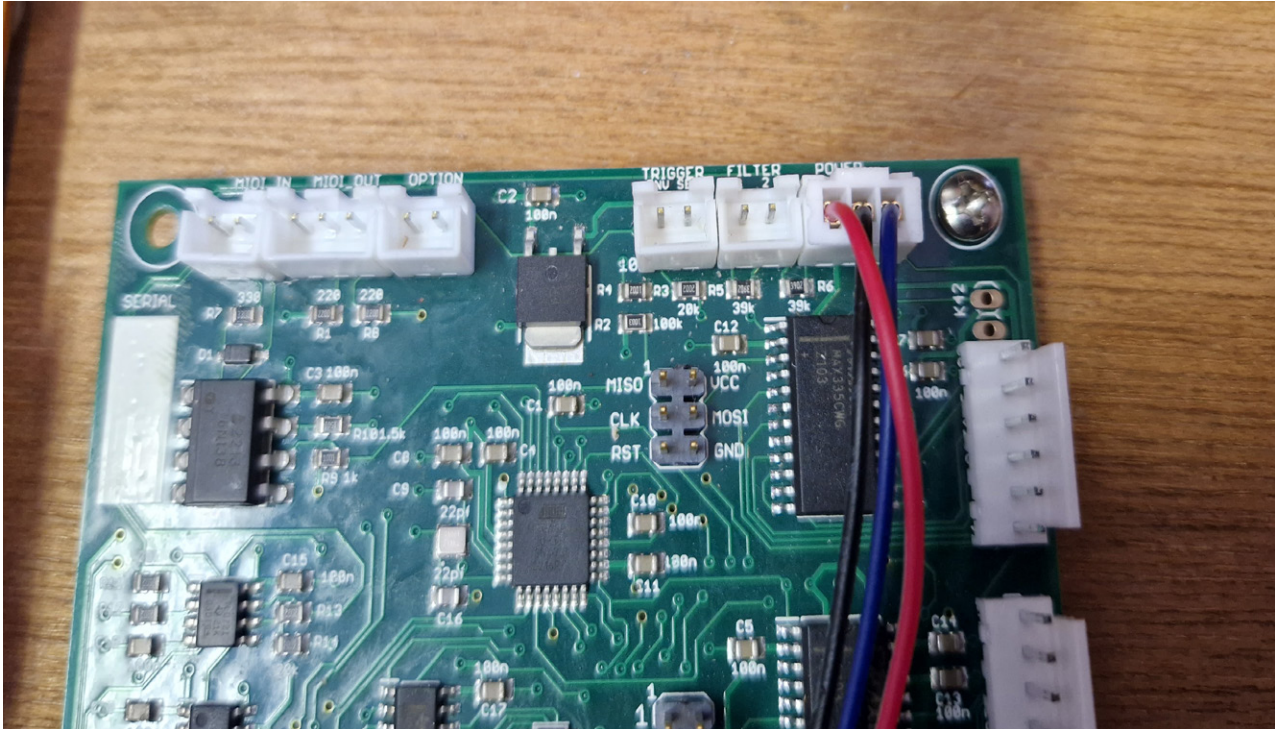
**POS/RED** is the +15V.

**GND/EK/BLACK** is the ground cable

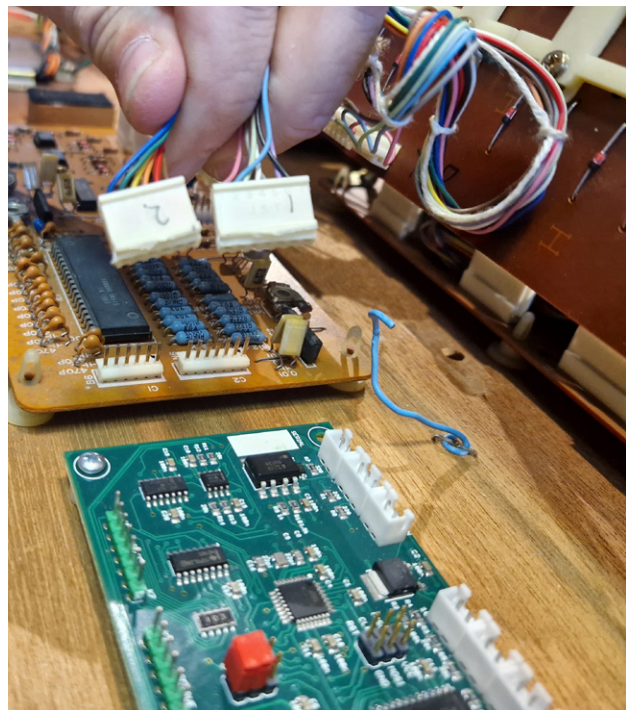
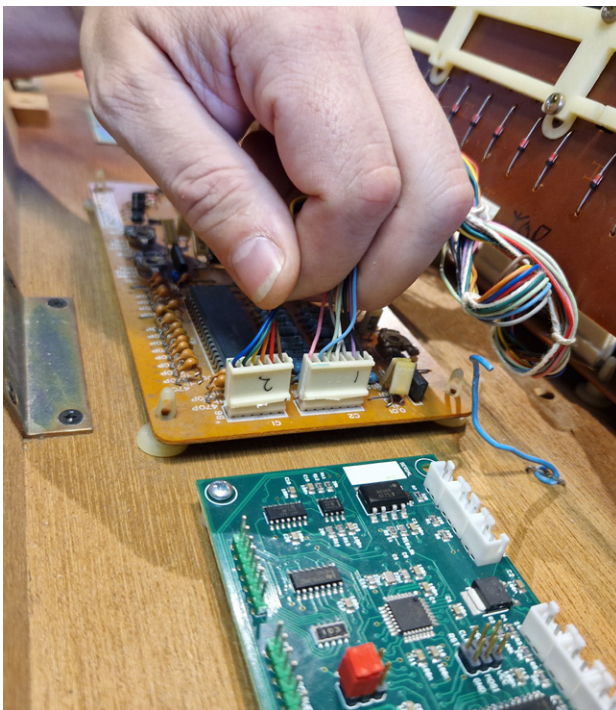




Now plug the Power cable into Power on the MIDI Board as shown in image.

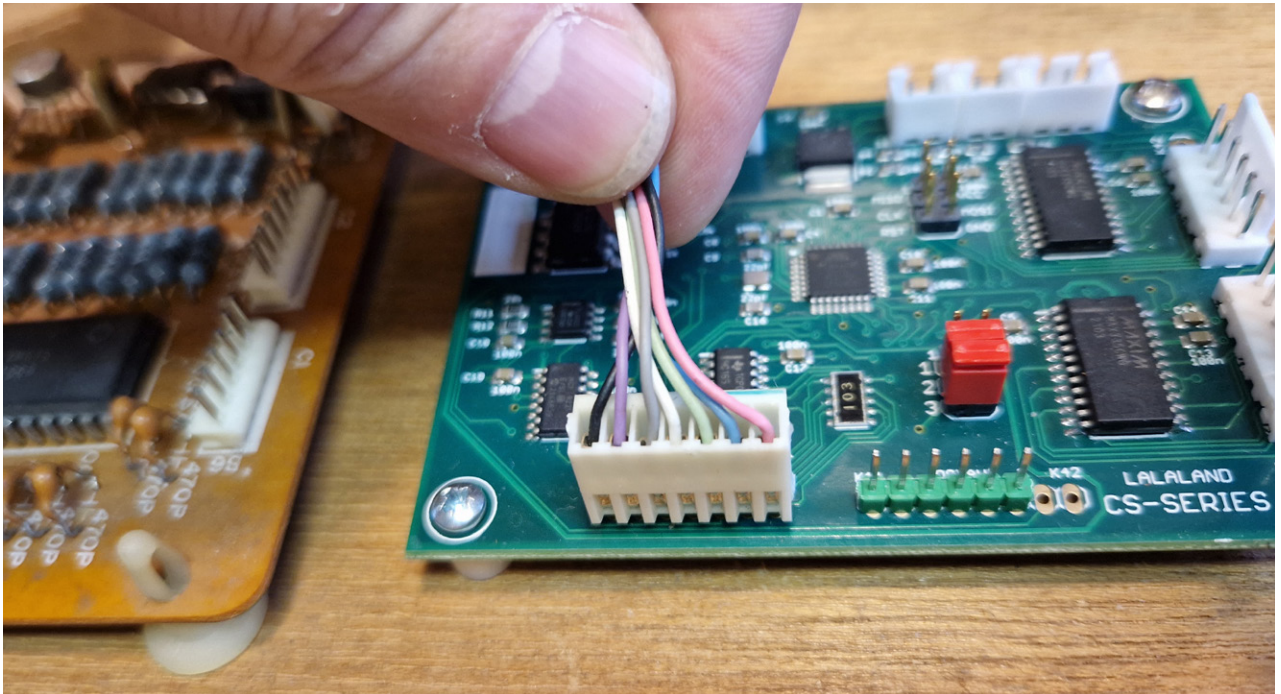


Locate and disconnect the 6 and 7 pin cables on the key assigner PCB.

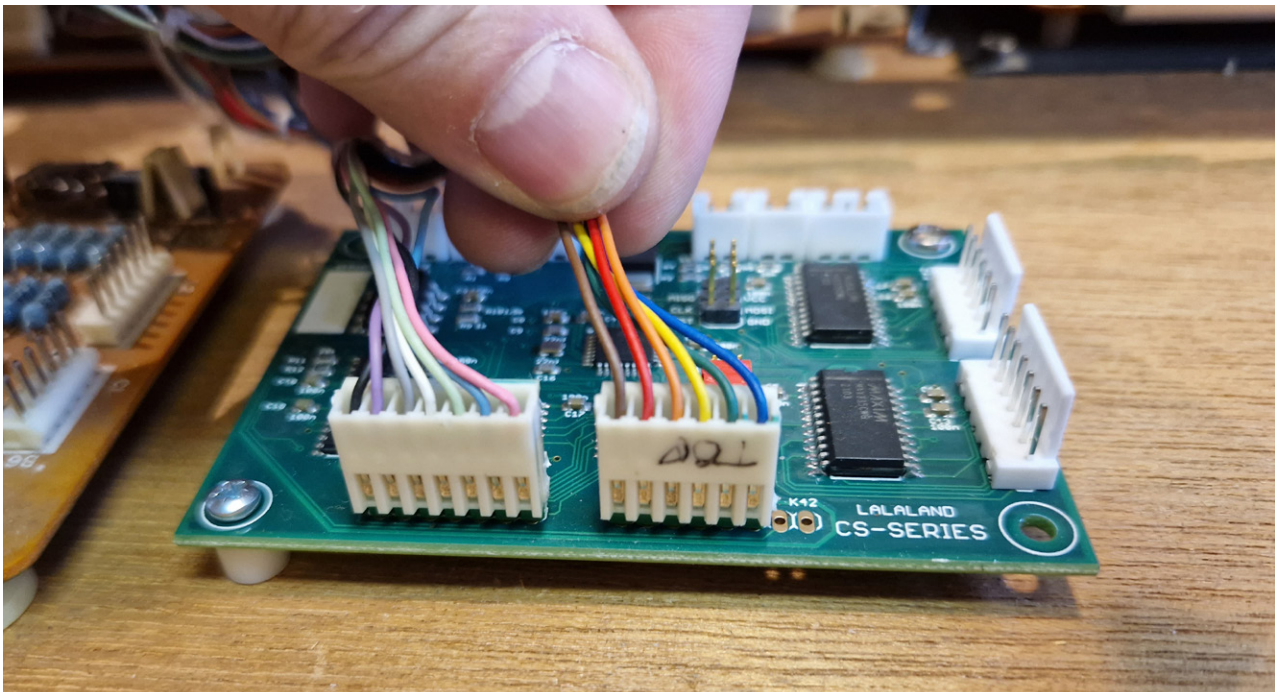




Connect the 7 pin cable to the midi board as shown in image.

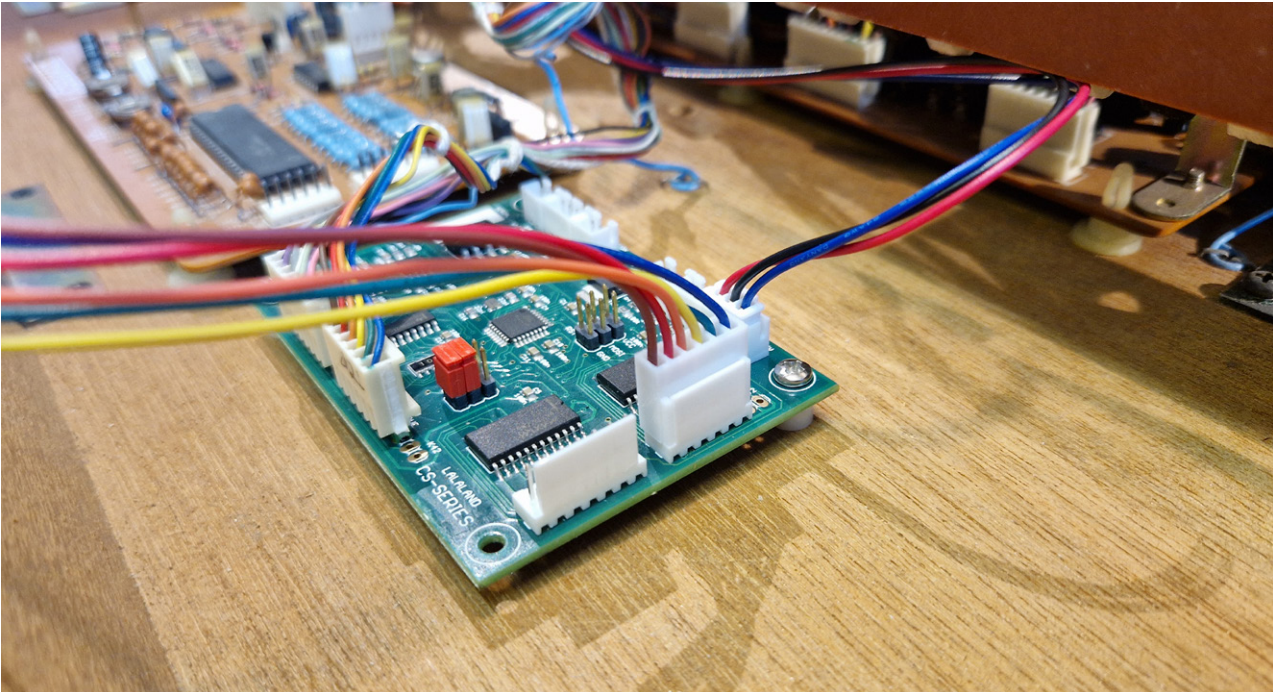


Connect the 6 pin cable to the midi board as shown in image.

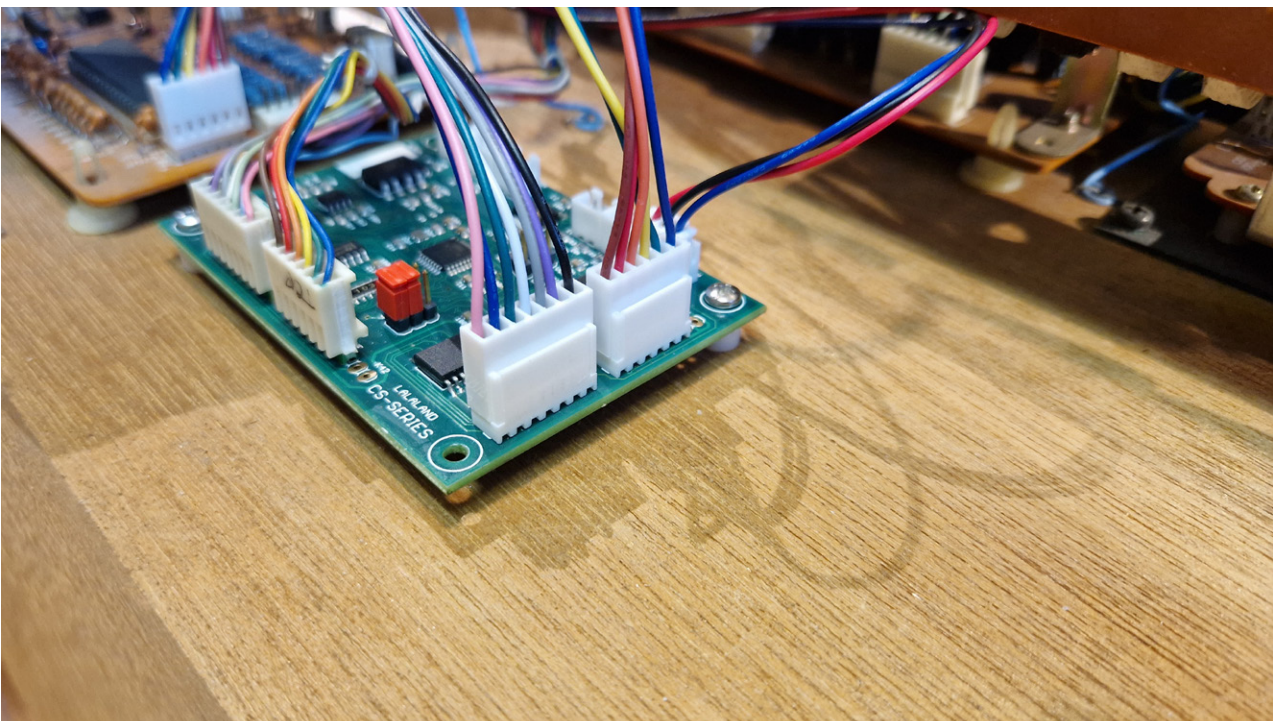




Now connect the provided 6 pin cable to the MIDI board as shown in image

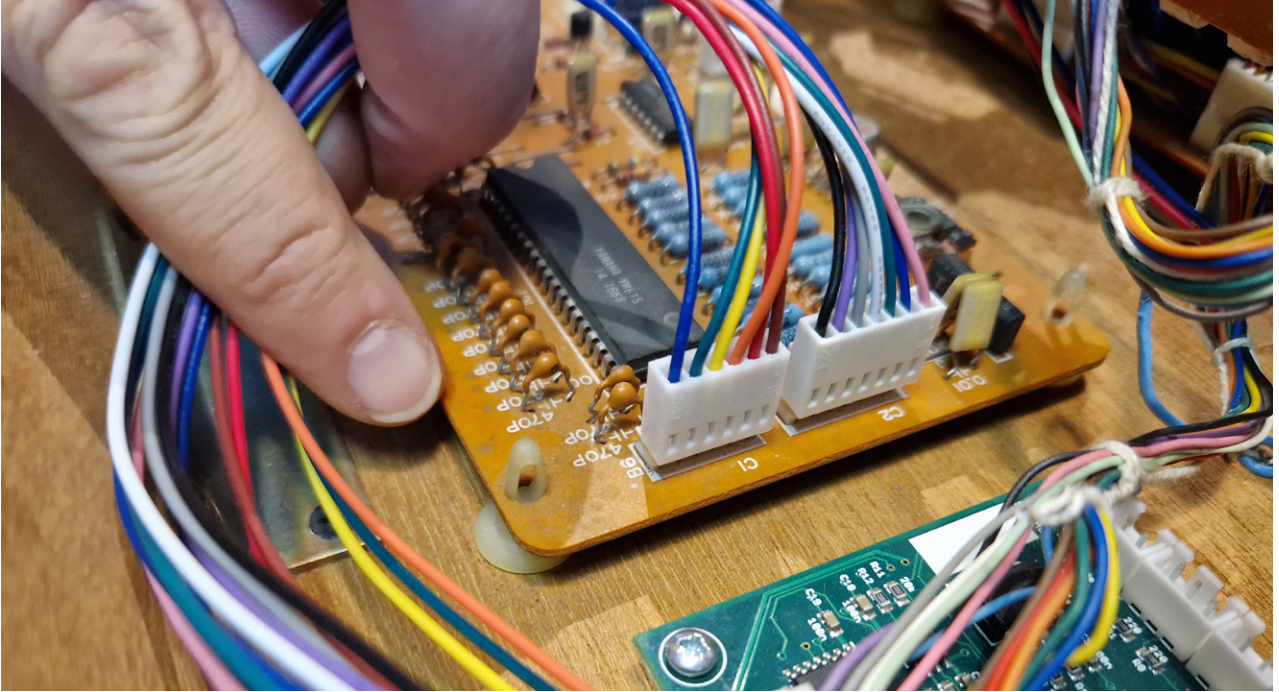


Connect the provided 7 pin cable to the MIDI board as shown in image

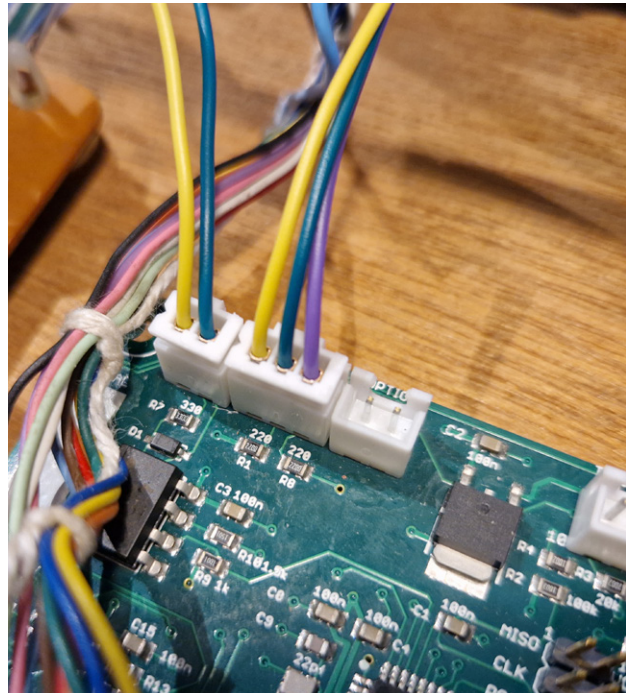
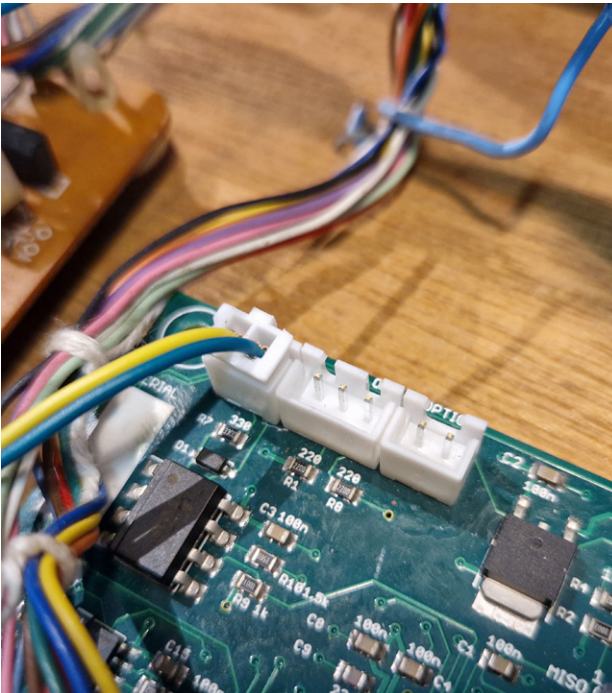




Connect the 6 and 7 pin cables to the MIDI board as shown in image. (where you previously disconnected the original cables).



Connect the MIDI in and out cables as shown in image.

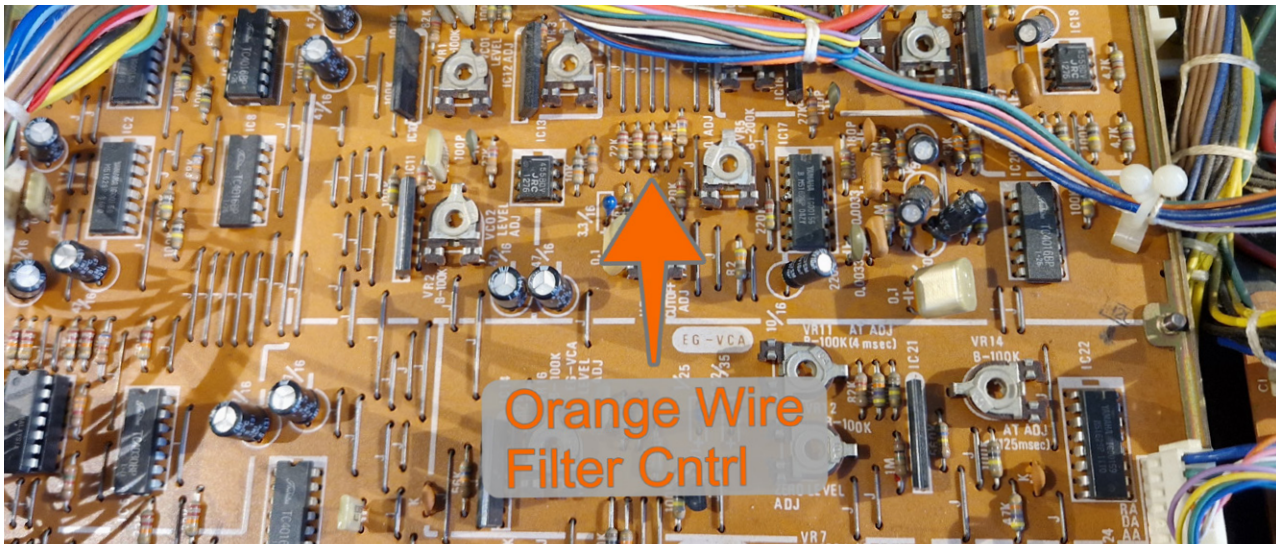


*NOTE: At this point the board, MIDI in/out is operational. Filter control is optional.*



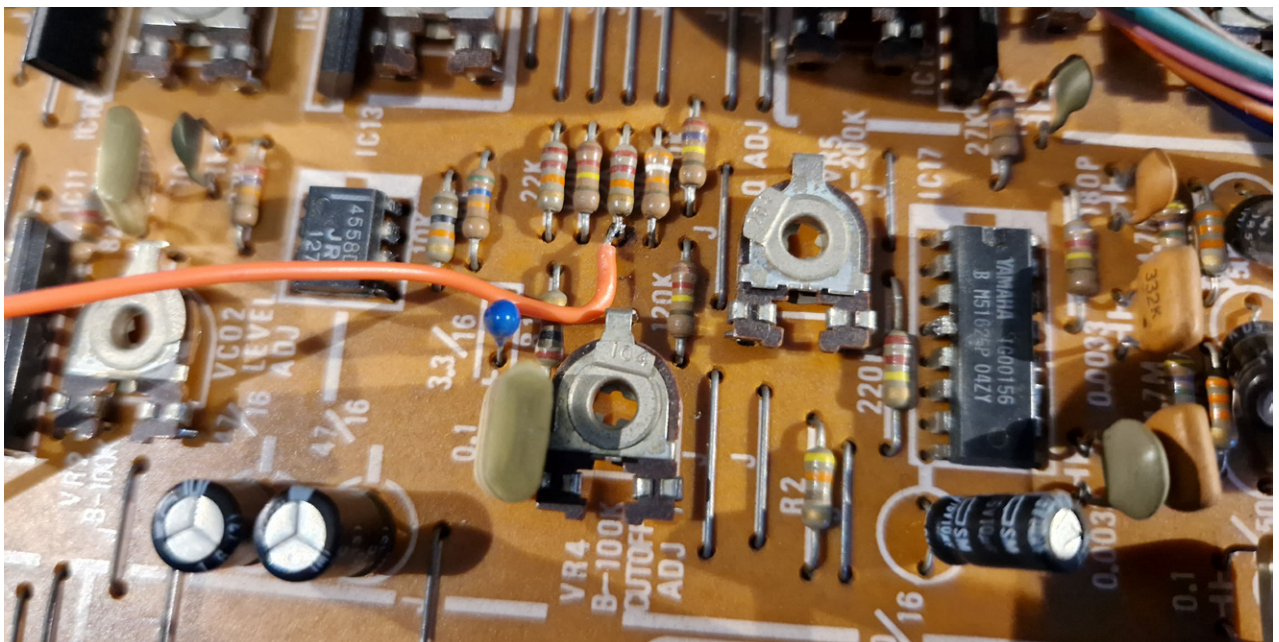
Solder the filter cable(s)

Locate the solder point shown in this image (The right front panel board).



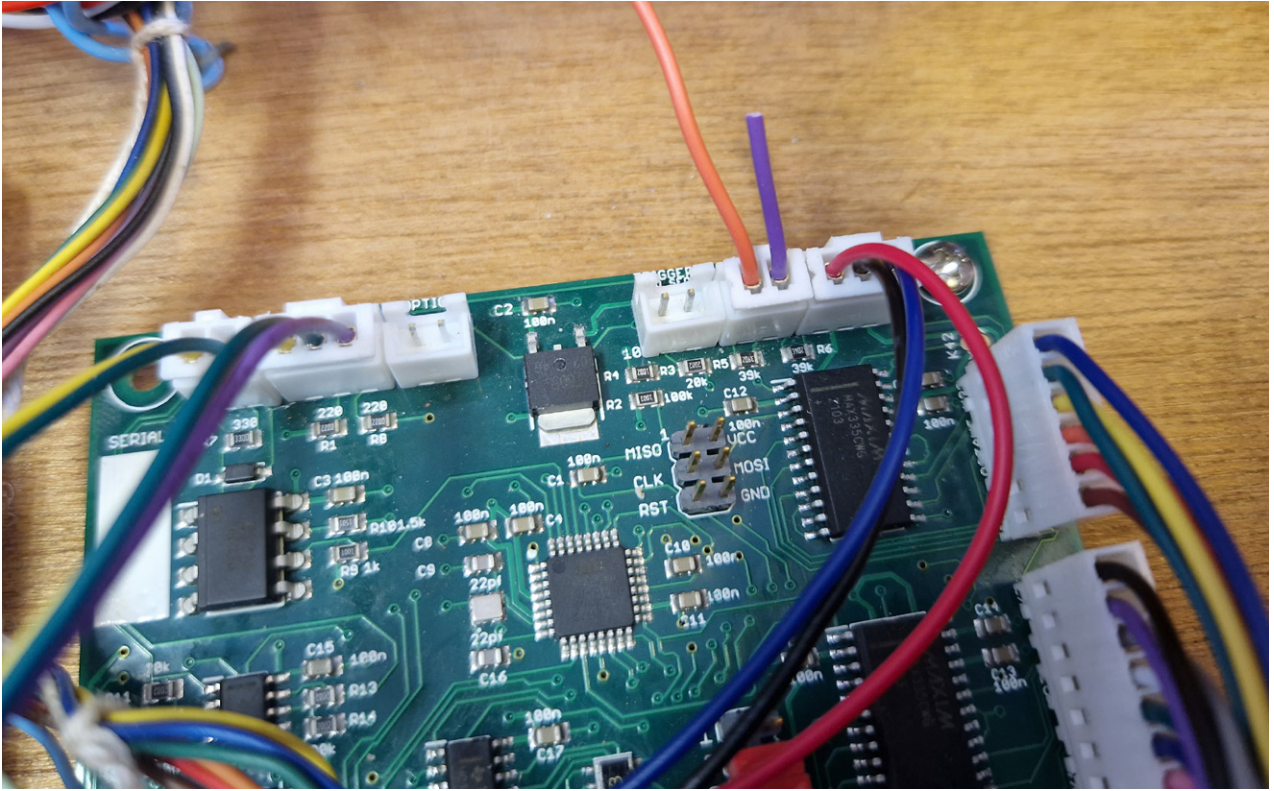
Use the provided orange and Purple cable.

Solder the **orange wire** to this point shown in image (Purple is not used).





Now connect the 2 pin connector to the FILTER connector on the midi board as shown in image.



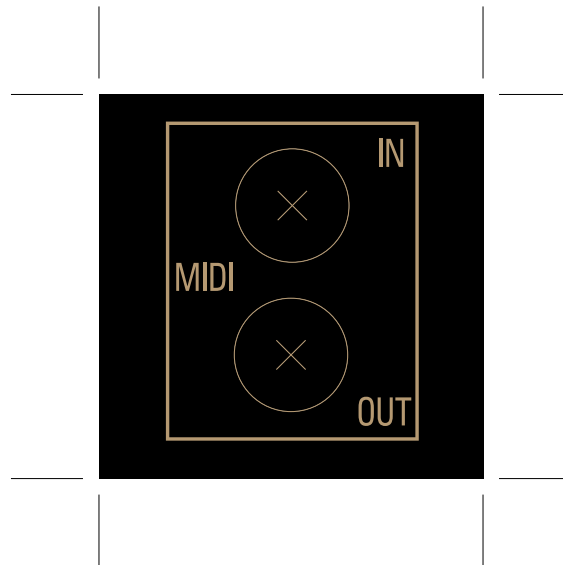
*You have completed the full installation.  
MIDI in/out, filter and all features are now operational.*

*Secure all wiring with the included zip ties.  
Close the synth and connect to mains.*



## MIDI drill template

Print out and use as drill template.





Congratulations on your CS20M MIDI Kit  
May the force of creation be with you!

Join our early bird club at  
[lalandsynth.com](https://lalandsynth.com)  
for news about new products