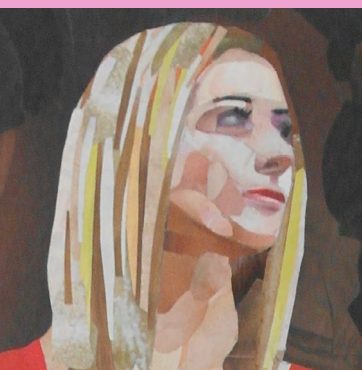
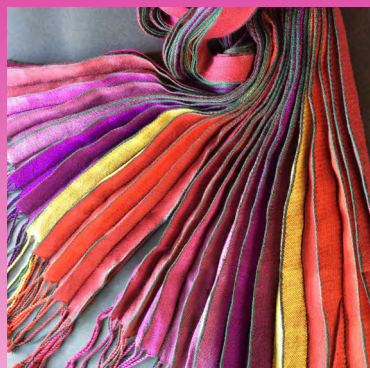
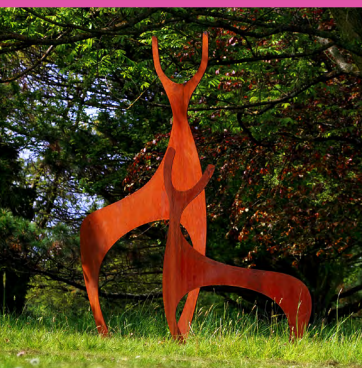


HENLEY 2019 ARTSTRAIL

4-6 MAY • BANK HOLIDAY WEEKEND

www.henleyartstrail.com

paintings
prints
sculpture
ceramics
jewellery
textiles
glass
and more



Free entry to 33 venues in and around Henley and Twyford.
Original work by local artists. Come and see the artists at work.*

SPONSORED BY





Lady Sew and Sew **A**

The UK's premier craft fabric and knitting yarn warehouse with outlets in Henley and Marlow. As well as a wonderful stocklist, we hold organised visits, demonstrations and classes on a regular basis. You can catch up with everything on our website. See you soon.

Farm Road, Henley-on-Thames, RG9 1EJ
01491 572528

info@ladysewandsew.co.uk

www.ladysewandsew.co.uk



The Henley-on-Thames School of Art **B**

A whole host of daytime, evening and weekend workshops, classes and courses. Held in the centre of Henley – designed for complete beginners, experienced artists, rusty artists, A-Level students and children – all are most welcome.

The Studio, 30c Hart St,
Henley-on-Thames, RG9 2AU
07748 567250

studio@thehenleyschoolofart.com

www.thehenleyschoolofart.com



WELCOME

With nearly 300 artists and makers at 33 venues, the Henley Arts Trail 2019 is the largest to date. Now in its 14th year the trail regularly attracts over 10,000 visitors over the early May bank holiday weekend.

From Bix in the north through to Shurlock Row in the south, the trail sees the doors of artists' studios, garden sheds, garages and village halls flung open to reveal the wealth of artistic talent in the area.

From skilled amateurs to award winning professionals, the trail covers the full gamut of arts and crafts. Larger than life sculptures, sit alongside delicate jewels; abstracts are juxtaposed against detailed botanical art. All venues are free, with no obligation to buy and artists will welcome guests to talk about their work often over a refreshing cup of tea... or even cake!

A BIG THANK YOU

To our sponsors and the work of the venue organisers. Without their support and effort the Henley Arts Trail would not happen!

VENUE OPENING AND INFORMATION

Free entry to all venues. Open 10am to 5pm

Some venues' opening times may vary so please check our website for further details
www.henleyartstrail.com

Location map on centre pages

Key to the Trail

- 1** Venue number and location on map
- A** Highlights sponsors and location on map
- H** Demonstrations / workshops
- C** Refreshments
- T** Toilet
- W** Wheelchair access
- S** Steps to climb

* Please check with venues offering demos and hands-on workshops for their times to avoid disappointment.

Tough Mudder Traffic coming into Henley

This creates long delays on the weekend mornings of the Trail, so it's best to avoid these times and approach Henley mid to late afternoon on the Saturday & Sunday.



Buratta's **C**

A comfortable, relaxing restaurant pub. Renowned for its inspired à la carte meals, excellent wines, real ales and friendly service. Large garden with ducks and chickens.

Buratta's at The Royal Oak, Ruscombe Lane,
Ruscombe, RG10 9JN
0118 934 5190

enquiries@burattas.co.uk

www.burattas.co.uk



Grapevine Estate Agents **D**

At Grapevine, we take a fresh, stylish and artistic approach to marketing your home; covering Twyford and the surrounding villages. We're proud to be sponsoring the Henley Arts Trail 2019.

18 London Road, Twyford, RG10 9ER
0118 934 4811 | sales@grapevineproperty.co.uk
www.grapevineproperty.co.uk



GRAND OPENING

Come and celebrate the Henley Arts Trail grand opening with us!

Friday 26 April 18.00 - 20.00 Trail launch

Exhibition runs 26 April – 7 May

10.00 am – 5pm

Venue 1 – Henley Art and Crafts Guild, The Old Fire Station Gallery,
66 Market Place, Henley-on-Thames, RG9 2AG

Get a taste of some of the wonderful work our venues have to offer in 2019!



1 Henley Art & Crafts Guild

Paintings, sculpture, ceramics, crafts & prints
Opens one week before the Trail – Friday 26th April and continues until Tuesday 7th May. All of the excellent work on display is by Guild members, many of whom have HAT venues. Come and see their work before you head out onto the trail.

The Old Fire Station Gallery, Upper Market Place,
Henley-on-Thames, RG9 2AQ | 0118 9722133
www.henley-art-crafts-guild.org

Henley Art and Crafts Guild





2

Ceramics and Wood: WORKS

Ceramics and wood sculpture

Contemporary Ceramics & Wood Sculpture inspired by ancient rocky outcrops in Charnwood Forest. Sculptural bowls & pottery for home and garden

No 38 (rear entrance to 38 Gravel Hill, Henley on Thames) – opposite to 100 West Street, Henley on Thames, RG9 2EA 07811 334874 | www.margaretwainwright.com



3



The Henley-on-Thames School of Art

Illustration, sculpture, painting

The HSA is representing a fantastic range of local Artists – including a Ceramicist & Sculptor, 4 different Illustrators & the brilliant Harriet Riddell will be back with her Sewing Machine Portrait skills – a wonderful mixture – come & enjoy a glass of Prosecco whilst you peruse their wonderful work or have your portrait sewn! For more info on our artists this year have a look at:

www.thehenleyschoolofart.com/Artstrail

30c Hart Street, Henley-on-Thames, RG9 2AU | 07748 567250

Rupert House School

E

Every child at Rupert House is a valued individual, following their own pathway through the school. Our small class sizes enable staff to guide and nurture each child to develop their talents, build their confidence, and maximise their potential. Come and meet us at our Open Morning on Saturday 18th May from 10am to 12noon.

90 - 92 Bell Street, Henley-on-Thames, RG9 2BN 01491 574263
office@ruperthouse.oxon.sch.uk

www.ruperthouse.org



4

Bronwen Coussens & friends

Painting, ceramics, jewellery, photography, sculpture

An eclectic variety of original work by 8 local artists - ceramics by Bronwen Coussens & Martin Eastbrook, jewellery by Martina Fabian, photography by Virginia Davis, paintings by Laraine Rook & Patricia Lynch, sculptures by Sonny Moore & Hannah Stembridge-King. A warm welcome awaits you in this spacious riverside venue. Free parking.

River and Rowing Museum, Henley-on-Thames, Oxon, RG9 1BF | 07811 972237

www.martineastbrookceramics.com

www.larainerook.com | www.patricia Lynchart.co.uk

www.martinafabianjewellery.co.uk



5

Assenden Glass Studio

Glass

Glass blown, cut, cast, polished – form, function and colour. For house and garden.

Through Orchard Dene Nurseries, Lower Assenden, Henley-on-Thames, RG9 6AL | 07885 914252

www.assendenglass.co.uk

RG10 Marketing

F

Be seen in our community magazine, delivered across the RG10 area from Hurst to Wargrave and Charvil to Knowl Hill. List your organisation in our online directory, add your event to our calendar, appear on our screen at Twyford Surgery or request a quote for leaflet printing/delivery.

Join us @rg10mag!

0118 907 2510
nikki@RG10mag.com

www.RG10mag.com



6

The Bix Six & friends

Ceramics, jewellery, paintings, prints, photography, soaps, textiles and wood

Contemporary jewellery by Matthew Hitch, woodwork and jewellery by John Parrey, glasswork by Therese Wicks, leather handbag by Vicky Baker, paintings and prints by Therese Lawlor and Karen Spencer, handmade soaps by Midori.

Bix Village Hall, Bix, RG9 6BS | Matthew Hitch 07815 970 295
www.thebixsix.wordpress.com



7

Singers Lane Artist Studios

Painting, prints, sculpture, mixed-media, framing & flowers

Charming artists' studios (converted stables) around a pretty courtyard. New, original work by artists Kirsten Jones, Camilla Dowse, Genevieve French & guest artists. Fresh, contemporary pieces, limited edition prints, framing and gifts. Browse a varied, unique collection of artwork and enjoy a glass of champagne or coffee and cake!

Singers Lane Art Studios, Singers Lane (off Vicarage Road), Henley-on-Thames RG9 1HB | 07976 298070
www.kirstenjones.co.uk

Art with a story.. in a beautiful courtyard @ Venue 7



Amazing artwork, guest Artists, special gifts and surprises!
Cake, coffee, snacks & champagne (charity donations)
Singers Lane Studios (Off Vicarage Rd) Henley RG9 1HB

kirstenjones.co.uk

Charsley Harrison LLP

G

Charsley Harrison LLP is a well established law firm in Windsor. We act for businesses and individuals locally, as well as further afield, both nationally and internationally. We work in a number of areas, including Company and Commercial law, Commercial and Residential property, Wills, Trusts and Probate, Family law, Litigation, Employment law and Landlord and tenant. For a professional service with a personal touch, get in touch with Charsley Harrison, LLP.

01753 851591 | enquiries@charsleyharrison.com | www.charsleyharrison.com





8



Lady Sew and Sew

Quilting, Knitting and Textile Art - open 10am -4pm
Europe's largest craft fabric and knitting yarn warehouse will be hosting an exciting display of quilts and textile art by local artists and our very own customers!
Lady Sew and Sew, Farm Road, Henley-on-Thames, RG9 1EJ | 01491 572528 | www.ladysewandsew.co.uk



10



Artists at Shiplake

Paintings, textile art, ceramics, jewellery, weaving
High quality locally made work in a variety of styles and media. Artists this year include Kate Findlay, Maria Meerstadt, Caroline Gatfield, Carol Cox, Jan Richardson and others. Browse at your leisure, meet the artists and stay for a refreshing cup of tea.
Shiplake Church Room, Reading Road, Shiplake Cross, RG9 4BW | 07525 160306 | www.mariameerstadt.com
www.artsfindlay.co.uk



9



Studio 4

Drawing, illustration, painting and sculpture
Open studio. New works by contemporary artists Emma Bruce, Louise Shaw & Steve Allender. Free parking, comfy sofa, refreshments & loos.
Studio 4, Fairview Estate, Newtown Rd, Henley-on-Thames, RG9 1HG (free parking) 07787 157487
www.portraitdogs.co.uk
www.louiseshaw.co



11



Wendy Penrose Jewellery

Silver, gold & gemstone jewellery
Visit Wendy Penrose's garden workshop to see jewellery, with rich, organic forms handcrafted from precious metals and gemstones.
Rose Cottage, Orchard Close, Shiplake Cross, RG9 4BU
07732 165284 | www.wendypenrosejewellery.co.uk

Kate Findlay

Visit Kate at Venue 10
Artists at Shiplake
www.artsfindlay.co.uk
katefindlays.net



13



The Old Smithy Studio

Painting, printing, photography, textiles & sculpture
Cate Stuart, Kasha Lunt, Sharon Hewitt, Martin Lorenz, David Law, Jenny Law, Peter Jones, Karin Ort, Jayne Ward, Judith Fletcher, Gillian Cheeseman, Kay Singla, Diana Seidl.
Old Smithy Studio, Culham Lane, RG10 8NR
01491 636295 | catestuart@aol.com



14



Micklems Farm

Painting, printmaking, mixed media, ceramics, sculpture, photography, greetings cards
Elizabeth Baldin, Louise Spiers, Rosemary Harper, Helen Long, Shelagh Casebourne, Carolyn Beale, Lucie Lambourn, Michaela Fishwick, Michele Greene, Chris Harper.
Micklems Farmhouse, Knowl Hill Common, Knowl Hill, RG10 9YD | 07973 325451



12



Shiplake Arts & Crafts

Carved wood, stone sculpture, ceramic figures, woven scarves, mixed media, paintings, jewellery, glass, quilting, millinery, enamels, metal design
Welcome everyone. Come, meet, and talk to all our interesting and creative artists. Artists include John Nicholls, Keith Appleby, Shirley Abraham, Wendy Nicholson, Gloria Pitt, Barbara Goodbun, Julie Grose and many more.
Shiplake Memorial Hall, Memorial Avenue, Shiplake, RG9 4DW | 07899 771389



Close to Home
by Elizabeth Baldin



Scout by Louise Shaw

ART TRAIL VENUES

- 1 Henley Art & Crafts Guild
- 2 Ceramics & Wood: WORKS
- 3 The Henley-on-Thames School of Art
- 4 Bronwen Coussens and Friends
- 5 Assenden Glass
- 6 The Bix Six & Friends
- 7 Singers Lane Artist Studios
- 8 Lady Sew and Sew
- 9 Studio 4
- 10 Artists at Shiplake
- 11 Wendy Penrose Jewellery
- 12 Shiplake Arts & Crafts
- 13 The Old Smithy Studio
- 14 Micklems Farm
- 15 The Coach House Works
- 16 The Big Plant Nursery – 'Art in the Garden'
- 17 Lorna Minton Studio
- 18 Sonning Arts & Crafts
- 19 Linda Saul & Carole Pembroke
- 20 Twyford Studios
- 21 Family of Artists
- 22 Este MacLeod Studio
- 23 Grapevine - Twyford Together
- 24 The Most Beautiful House in the World + One
- 25 Rebecca Howard & Friends
- 26 Charlwood Villas
- 27 Sally Castle, Marc Juon, Susie Ball
- 28 Buratta's at the Royal Oak
- 29 Phoenix Textiles
- 30 Whistley Arts
- 31 West Forest Potters
- 32 Coltman's Farm
- 33 Catherine Ingleby Fine Art

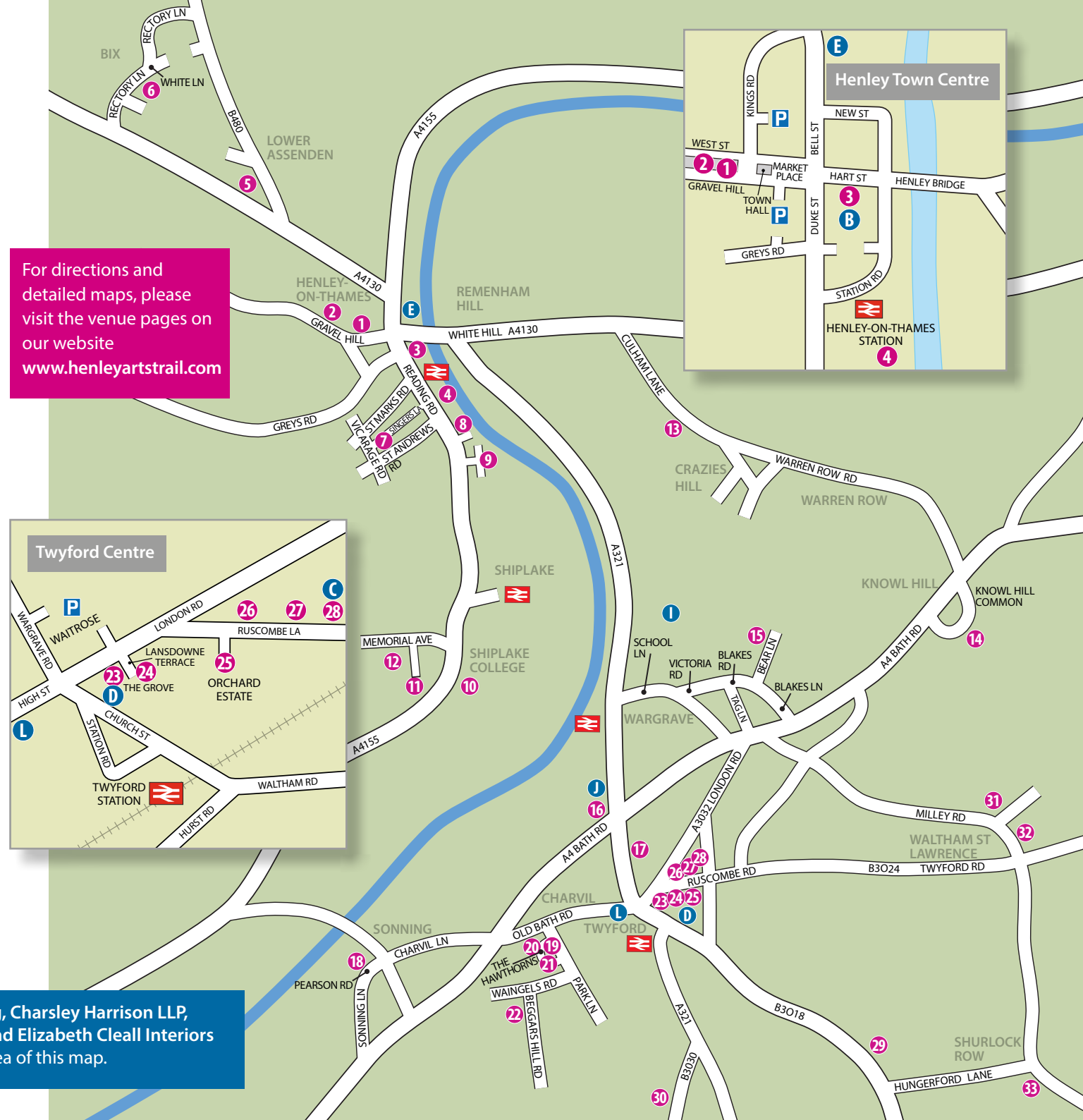
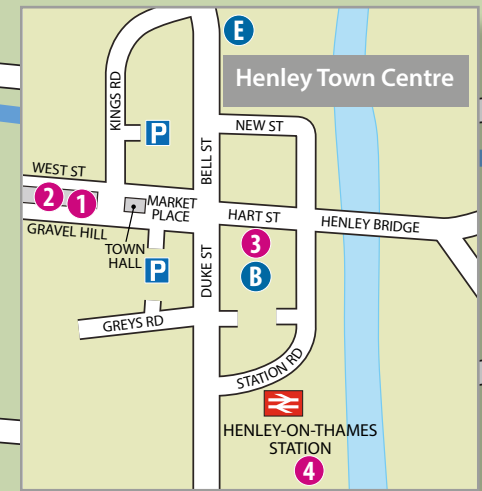
OUR SPONSORS

- A** Lady Sew and Sew see 8 on map
- B** The Henley-on-Thames School of Art see 3 on map
- C** Buratta's see 28 on map
- D** Grapevine - Twyford Together see 23 on map

- E** Rupert House School
- F** RG10 Marketing
- G** Charsley Harrison LLP
- H** The Big Canvas Project
- I** The Picture Framer
- J** Creative Landscape Co.
- K** Elizabeth Cleall Interiors
- L** Little Red Rooster PR

Sponsors RG10 Marketing, Charsley Harrison LLP, The Big Canvas Project and Elizabeth Cleall Interiors are located outside the area of this map.

For directions and detailed maps, please visit the venue pages on our website www.henleyartstrail.com





15



The Coach House Works

Basketmaking, willow sculpture and chair seating, furniture making with reclaimed materials

Christine Brewster, basketmaker, Steve Hedger, furnituremaker of Chissock Woodcraft, and friends. The Coach House, Bear Lane, (just off Blakes Lane)Hare Hatch, Berks RG10 9XR 07786 062 860

www.thecoachhouse.works
www.stripeybasket.co.uk



16



The Big Plant Nursery

Outdoor art & sculpture in stone, metal, wood & glass plus unique paintings inspired by the natural landscape

Talented artists display 'Art in the Garden' with a variety of outdoor art and sculpture displayed in the relaxing environment of a mature plant nursery. Perfect for furnishing your outdoor space. Indoor art inspired by the natural landscape will also be on display, with local artist Sarah Pye demonstrating her unique style of painting. Open 9-5pm Sat, 11-5pm Sun & Mon

The Big Plant Nursery, Wargrave Road, Twyford, Reading, RG10 9PN | 0118 934 1757
www.thebigplantnursery.com



17



Lorna Minton Botanical Artist

Watercolour paintings

Lorna is an RHS Gold Medal holder for botanical paintings, and will be exhibiting original paintings, prints and cards. 53 Amberley Drive, Twyford, Berkshire RG10 9BX 0118 934 5783 | www.palmito.demon.co.uk



19



Linda Saul & Carole Pembroke

Painting and textiles

Visit mixed media artist Linda Saul at her home studio where she will be showing her paintings of the coast and the built environment. She is joined by painter and textile artist Carole Pembroke whose work often shows a humorous take on life.

The Gables, 14 Park Lane, Charvil, Reading, RG10 9TR 0118 934 3130
www.lindasaul.co.uk | www.carolepembroke.com

The Big Canvas Project

H

We provide workshops that allow students to connect to their innate intuition and creative senses, using a wide range of medium. We guide exploration and nurture the search of that sweet spot between intuitive play and intellectual thought, to create beautiful, intriguing and authentic imagery and a deep connection to self. We hold safe and non judgmental spaces in beautiful places, where we also enjoy delicious refreshments. BUCKS, BERKS, OXON 07734 951080



www.thebigcanvasproject.co.uk

The Picture Framer

I

With over 20 years framing experience David provides a professional and friendly service. He can frame almost anything and has a wide range of frames to suit all budgets. In addition, David offers an art restoration service as well as a wide selection of mirrors.

10% off framing with presentation of this leaflet.

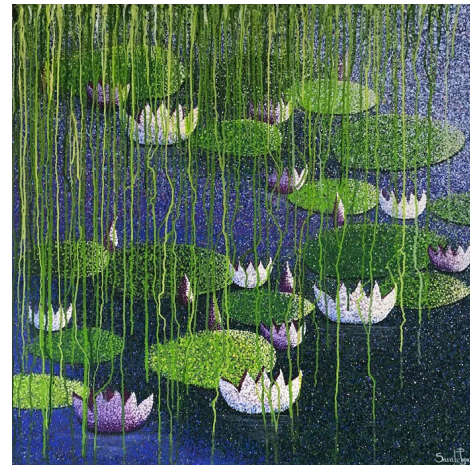
1A Spring Meadows Business Centre, Highfield Lane Wargrave, Berkshire, RG10 8PZ | 07969 958606

david@thepicture-framer.co.uk
www.thepicture-framer.co.uk



Sarah Pye Fine Art

Unique contemporary statement paintings



See more of my work
at the Big Plant Nursery – Venue 16

www.sarhsart.co.uk mail@sarhsart.co.uk
T 07810 833617



18



Sonning Arts & Crafts

Textiles, basketmaking, watercolours, woodwork

Showcasing the creative talents of Sonning's local artists. Hand-crafted willow basketmaking; quilted and embroidered textiles; original artwork and prints and much more.

Pearson Hall, Pearson Road, Sonning, RG4 6UL 07595 606030 | <http://labas.co/crafts/HAT19/index.html>

Creative Landscape Co.

J

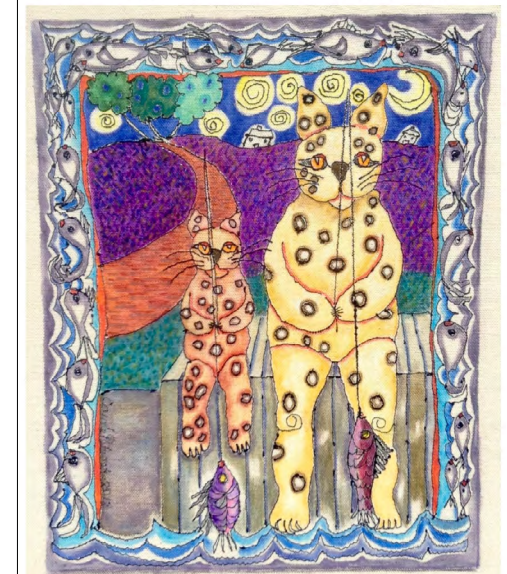
Award winning landscapers based at our own Big Plant Nursery (venue 16). Visit us on the trail to enjoy the sculpture exhibition, browse examples of our design and landscaping work and talk about your garden project. Inspiring plants and gardens.

The Big Plant Nursery, Wargrave Rd, Twyford, RG10 9PN | 0118 934 1500
info@creative-landscape.co.uk
www.creative-landscape.co.uk



creative landscape
plants • design • landscape • maintenance

Carole Pembroke Painter & Textile Artist



www.carolepembroke.com

Venue 19



20



Twyford Studios

Paintings, glass, ceramics, jewellery & more!

Twyford Studios will be presenting a wonderful mix of work from the finest local artists and makers! Artists will be present at the venue to welcome guests and talk about their work. This venue has ample parking, disabled access and toilets.

Charvil Village Hall, The Hawthorns, Charvil, Reading RG10 9TR 07792 793867 07941 063180
www.twyfordstudios.co.uk | www.ginkgo.london
www.chadwick-art.co.uk
www.silverwavejewellery.etsy.com



21



Family of Artists

Oils, acrylic, ink, watercolour and ceramic pieces

Claire Burriss, Emma Boote and Robert Harrison will be displaying a wide range of artwork. There will be original artwork, ceramics, prints and cards available to buy!

16 The Hawthorns, Charvil, Reading, RG10 9TS
 07922 520343 | www.claireburrissart.com
www.emmaboote.co.uk



22



Este MacLeod Studio

Paintings, prints, textiles, cards

Este MacLeod is a colourist painter and designer. Working in her distinctive style she creates still life, landscape and floral paintings.

The Ramblers, Beggars Hill Road, Charvil, RG10 0UB
 07802 951966 | www.estemacleod.com



ALTERNATIVE ONLINE ART COURSES
WWW.EXPLORECOLOUR.COM



23

Grapevine – Twyford Together

Bookbinding, photography, botanical watercolours & handmade felt

Grapevine will play host to local bookbinder, Janina Maher. Also displaying work by photographer Andy Emptage, painter Lorna Minton and feltmaker Gwen Ryan. This has been supported by the Twyford Partnership who promote community initiatives in the village.

The Grapevine Estate Agents
 18 London Rd, Twyford, Reading RG10 9ER
 0118 934 4811 | www.twyfordtogether.org
www.janinamaher.artweb.com
www.theartco.net



24



The Most Beautiful House in the World + One

Paintings, sculpture, jewellery

Two adjacent cottages with two painters' studios. A huge variety of work inspired by travels, imagination, as well as local scenes. In all media, includes some sculpture and jewellery.

7 & 8 Lansdowne Terrace, Twyford, RG10 9DY
 07835 176401 | www.conway-jones.co.uk
www.robertbaldwin.fineart.com



25



Rebecca Howard & friends

Painting, jewellery & illustration

Landscape paintings, prints and cards by Rebecca Howard and silver handmade jewellery by Imogen Waller, ceramics by Fong Scott and wildlife artist, Lucy Keeble.

57 Orchard Estate, Twyford, Berkshire RG10 9LA
 07751 752764 | www.rebecca-howard.co.uk



26



Charlwood Villas

Mixed media, drawings, paintings, photography, textiles

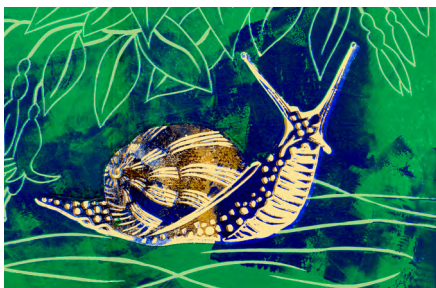
Nicky Savage - Mixed media artist exploring my own conversations with the natural world.

Paul Burch - Photographs that capture distinctive, whimsical, constructs with a playful and surreal dimension.

Ceira Crainer - Textile Designer & Printmaker who explores colour and tactility within her work.

Natasha Somers - Mixed Media Artist - My work is deeply rooted to my intuitive self and an often intangible connection with what I see.

27 Ruscombe Road, Twyford, Berks, RG10 9JL
 07840 526580 | www.thebigcanvasproject.co.uk/cvillas



27



Sally Castle, Marc Juon, Susie Ball

Painting, Printing, Jewellery, Ceramics

Sally's work includes illustration, lettering and linocuts. Marc makes unique hand crafted silver jewellery. Susie makes a variety of ceramics, including pieces for the garden.

2 Wisteria Cottage, Ruscombe Lane, Ruscombe, RG10 9JP
www.sallycastle.co.uk | www.marcjuonjewellery.com



29



Phoenix Textiles

Textiles

Using sewing as a therapy and with a love of nature together with using iconic Liberty Print, I use the textiles either in a print form or taking the material to sew into friendship cushions, not leaving any material to waste I sew hair scrunchies, lavender mindful bags and now upcycling chairs with textiles.

1 Hinton Hatch Cottages, Waltham Road, Twyford, RG10 0LX 07866 046002 | www.phoenix-textiles.co.uk



31



West Forest Potters

Ceramics

An exciting and varied range of locally produced ceramics made by members of West Forest Potters; a guild of potters including professionals, amateurs, throwers, hand builders and sculptors.

Neville Hall, Waltham St Lawrence, RG10 0JP
www.westforestpotters.org.uk



33



Catherine Ingleby Fine Art

Paintings

Catherine Ingleby is a renowned wildlife, sporting and equine artist based in Berkshire. She exhibits widely and is regularly selected for national art competitions. Catherine paints large scale wildlife and equine oil paintings, and a smaller body of charcoal works.

The Studio, Eastmere, The Street, Shurlock Row, RG10 0PS 07919 020704 | www.catherineingleby.com



28



Buratta's at the Royal Oak

Acrylics, collage, pastel, ceramics & small painted furniture

Steve Batty works mainly in collage and pastel but is recently creating more work in acrylics. Jenny Buratta paints in acrylics and will also be exhibiting ceramics and burlesque costumes. Peter Quarmby, Windsor chair maker.

Buratta's at the Royal Oak, Ruscombe Lane, Ruscombe, RG10 9JN | 0118 9345190
www.burattas.co.uk | www.stevebattyart.co.uk
www.peterquarmby.com

Elizabeth Cleall Interiors

K

Our Checkendon showroom & gallery of art is an inspiring space in a beautiful setting to find expert interior design advice for creating imaginative bespoke designs for your home.

The Showroom at Lovegroves Farm, Lovegroves Lane Checkendon RG8 0NE 01189 471175
info@elizabethcleallinteriors.co.uk
www.elizabethcleallinteriors.co.uk



30



Whistley Arts

Contemporary paintings, sculpture & jewellery

Jonathan de Mounteney - figurative oil paintings and sculpture.

Liz Chaderton - expressive watercolours.

Linda Tyler - studio silver jewellery.

Suzanne Needham - hand built and sculptural ceramics.

1 Whistley Court Farm, Lodge Road, Whistley Green, Hurst, Berkshire RG10 0EJ | 07981 013049

www.lizchaderton.co.uk www.demounteney.com

www.lindatyler.co.uk www.ceramic-artist.net

Workshops with Liz Chaderton

If you haven't picked up a brush in years or you want to explore new techniques, these exciting workshops will be perfect for you. Led by Liz Chaderton, an experienced tutor and successful artist, you can learn new skills in a relaxed atmosphere.

Visit www.lizchaderton.co.uk for more details or call Liz on 07981 013049.



32



Coltman's Farm

Sculpture, Mosaics, Floral Headdresses, Woodcraft, Glasswork, Illustrations, Painting

Sculptor Dick Budden opens his Home and Gardens along with his talented friends. Tea, coffee and cakes available with donations to Cancer Research UK.

Coltman's Farm, The Street, Waltham St Lawrence, RG10 0JJ | 0118 9343 356 | www.dickbudden.co.uk

Little Red Rooster PR

L

Little Red Rooster is the consumer public relations agency with kudos that delivers remarkable coverage for its clients across design, interiors, technology and fashion, thanks to its exceptional media contacts.

55 High Street, Twyford, RG10 9AJ
07506 756914
victoria@littleredrooster.co.uk
www.littleredrooster.co.uk



CONTEMPORARY
ART FAIRS

10th & 12th
MAY
2019

NEWBURY RACECOURSE



160 ARTISTS
5000 WORKS OF ART
WORKSHOPS
& LIVE ART DEMOS
CAFÉ AND WINE TASTING
FREE PARKING

INFO AND TO BUY TICKETS
WWW.CONTEMPORARYARTFAIRS.CO.UK

#realartforrealpeople
#apieceforeveryspace








Camilla Shelley Paintings

Gallery at Henley Business School
Greenlands
Hambleden
Henley-on-Thames RG9 3AU
20 April – 2 June 2019



MICKLEMS FARM CREATIVE WORKSHOPS

Micklems Farm is a unique venue,
designed to inspire creativity.

Workshops include painting and
drawing, mixed media, printing,
photography, calligraphy, jewellery,
book binding, rag rugging,
stained glass and more!

www.micklemsfarm.com
07973 325451

MICKLEMS FARM, KNOWL HILL COMMON, KNOWL HILL RG10 9YD



Liz Chaderton

Watercolours inspired by nature
www.lizchaderton.co.uk
Please visit me at venue 30 in Hurst
or call 0798 1013049



art & design

Our new Checkendon Showroom and Art Gallery
is the go-to place for ideas, inspiration and advice
when designing your home interiors.

From an extensive library of suppliers we offer
a complete range of soft furnishings, wall coverings
and floorings... plus we have expert specialist
craftsmen on our
books to fulfil
your projects.

elizabeth cleall
INTERIORS



T 0118 947 1175

E info@elizabethcleallinteriors.co.uk

W www.elizabethcleallinteriors.co.uk

The Showroom, Lovegroves Farmhouse
Lovegroves Lane, Checkendon, Oxon RG8 0NE