

CARTRIDGE CHANGE REMINDER:

Replace cartridge 12-18 months
from your purchase date.

Purchase Date:

___/___/___

REPLACEMENT CARTRIDGE
CQE-RC-04052



WHITE
CQE-SP-00809



CHROME
CQE-SP-00808



ONE-YEAR LIMITED WARRANTY

CRYSTAL QUEST® warrants your CRYSTAL QUEST® Bath Ball Water Filter for one year from the date of purchase against all defects in materials and workmanship when used in compliance with the manual. CRYSTAL QUEST® disclaims all implied warranties including, without limitation, warranties of merchantability and fitness for a particular purpose. If for any reason the product proves to be defective within one year from the date of purchase, please call for assistance.

This warranty gives you specific legal rights and you may have other legal rights which vary from state to state. CRYSTAL QUEST® assumes no responsibility for incidental or consequential damages, for damages arising out of misuse of the product, or the use of any unauthorized attachment. Some states do not allow the exclusion or limitation of implied warranties or incidental or consequential damages; therefore, the above limitations or exclusions may not apply to you. Should service be required during or after the warranty period or should you have any questions regarding how to use your CRYSTAL QUEST® Bath Ball Water Filter, contact our Technical Support department at warranty@crystalquest.com, Monday through Friday, 9 A.M. to 5 P.M. Eastern Time.

KEEP THIS MANUAL FOR FUTURE REFERENCE AND UNIT MAINTENANCE

Online warranty information
<http://crystalquest.com/warranty.htm>

Product design is subject to change without notice.

For further assistance, contact your Crystal Quest dealer
or visit us at www.crystalquest.com

To view the latest edition of the Bath Ball Filter, visit CrystalQuest.com

Please note all drawings, pictures, colors and sizes are approximate for illustrative purposes only and may not exactly resemble the end product.



Crystal Quest® Bath Ball Filter INSTALLATION AND OPERATION GUIDE



CRYSTAL QUEST®
Copyright© 2022

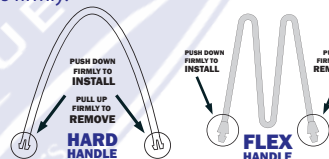
HOW TO USE

Hang the Bath Ball filter from its hard handle (a) over your bathtub faucet. If you do not have a pull on the top of your bathtub faucet which will keep the Bath Ball from sliding off, wrap the flex handle (included) around the bathtub faucet one time to secure in place. As the tub is filling, water will flow through the filter and out of the bottom with oxygenated, contaminant-free, filtered water.

Note: Insert the Flex or Hard handle into the bath ball holes firmly.

OPERATING SPECIFICATIONS

| | |
|-----------------------|-------------------------|
| Pressure Range: | 30-60 psi (2.1-4.1 bar) |
| Temperature Range: | 40-110°F (4.4-43.3°C) |
| Optimum Service Flow: | 2-3 gpm at 60psi |



BEFORE USING YOUR BATH BALL

1. Activate filter by running hot water through the Bath Ball cartridge for 2-5 minutes. This will flush loose media fines from bath ball cartridge. Loose media fines in a new cartridge are normal when first used and not harmful.
2. Cool to the desired temperature before entering bath.

MAINTENANCE

Caution: Protect cartridge from freezing temperatures. If freezing temperatures exist, drain unit and set wet replacement cartridge aside to dry. Protect cartridge from direct sunlight.

In rare cases, especially with infrequent use, bacteria can grow on or inside the bath ball housing. To clean and disinfect the housing, you can use hydrogen peroxide, boiling water, or mild dish detergent.



BEFORE USING YOUR BATH BALL FILTER

Easily replace the filter cartridge (c) every 12-18 months depending on consumption and water conditions. Harsher water conditions will require more frequent changing of the replacement cartridge.

CARTRIDGE REPLACEMENT

1. Unscrew the Bath Ball filter (Fig 1).
2. Replace the used cartridge with the new replacement cartridge (Fig 2).
3. Screw the housing back together (Fig 3).
4. Run hot water for 2-3 minutes to flush media fines from bath ball cartridge. Loose media fines in a new replacement disk are normal and will be flushed out when in use.

Do not use non-Crystal Quest replacement cartridges.
Do not use non-Crystal Quest parts or modify/tamper with unit.

BACK FLUSHING

Back flushing extends the life of your cartridge. Running water the opposite way through the cartridge will restore optimum service flow and ensure premium contact time with the media.

1. Unscrew the filter housing.
2. The replacement cartridge can be used inversely. Simply remove the replacement cartridge and reverse it by turning it around.
3. Reassemble the housing as per the instructions.
4. Use as normal.