



# 86,400 GPD R.O. SYSTEM

## GENERAL SPECIFICATIONS

Product SKU	CQE-CO-0864K
Gallons Per Day*	86,400 GPD
Gallons Per Minute	60 GPM
Approx. Weight	2,005 lbs.
Approx. Dimensions	L-194" x W-60" x H-72"
Nominal Recovery	75% - 80%
Operating Pressure	225 psig
Maximum TDS	2,000 ppm
Chlorine Tolerance	<1 ppm

## MECHANICAL SPECIFICATIONS

Motor/Pump	Multi-Stage
Voltage (Volts)	460 VAC - 3 PH
Hertz	50/60

## CONNECTION SPECIFICATIONS

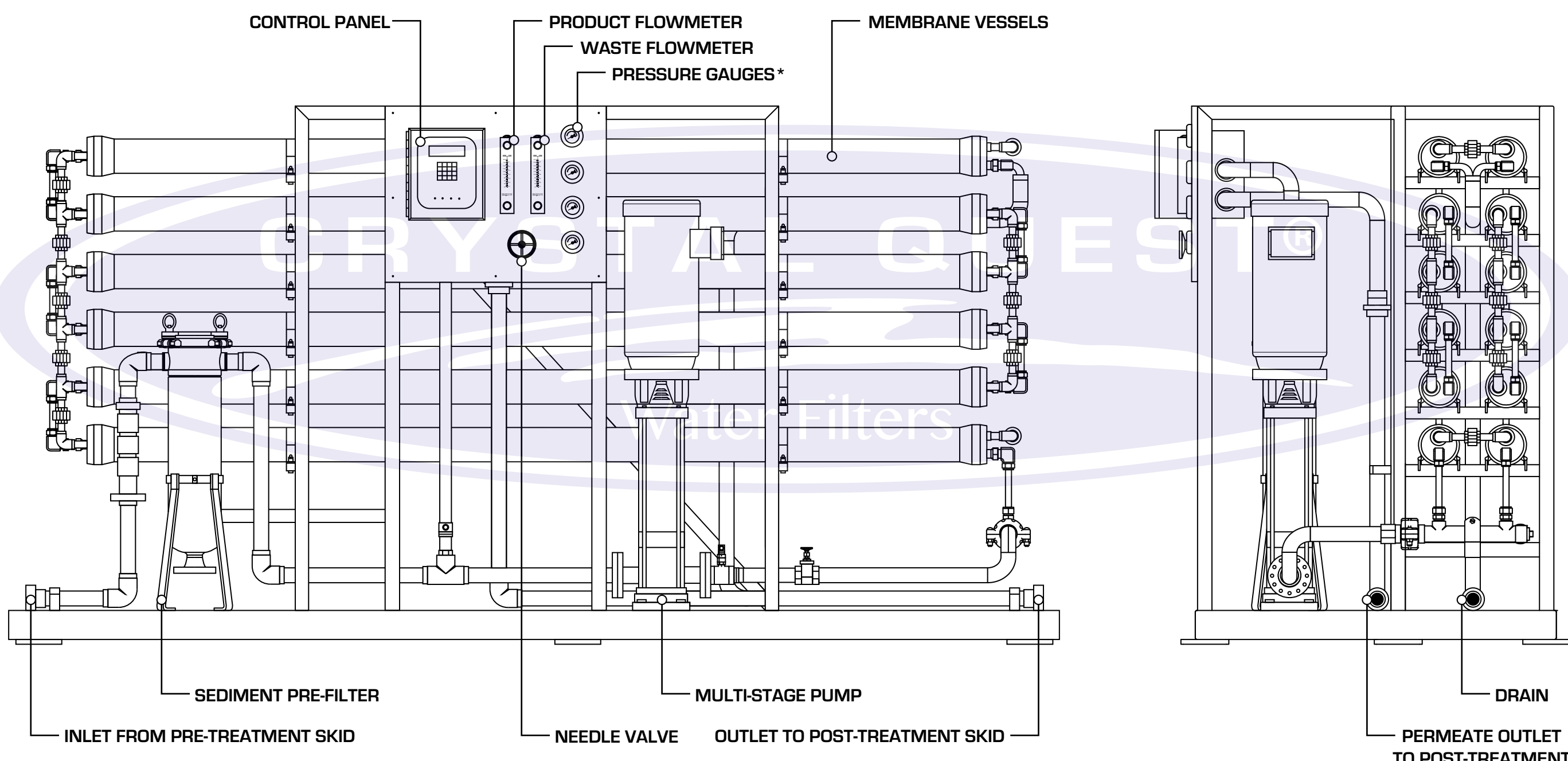
Feed Connection	3"
Product Connection	2"
Waste Connection	2"

## MEMBRANE/PRE-TREATMENT SPECIFICATIONS

<p>4" x 80" VESSEL 4" x 40" R.O. MEMBRANE COUPLER</p>	<p>R.O. SEDIMENT PRE-FILTER</p>		
Dimensions	4" x 80"	Dimensions	8" x 29"
Vessel Qty.	12	Vessel Qty.	1
Element Qty.	24	Backwash	Manual

**TOP VIEW**

**SIDE VIEW**



### REVERSE OSMOSIS SYSTEM PRESSURE GAUGE KEY:

- 1 PRE-FILTRATION PRESSURE - IN
- 2 PRE-FILTRATION PRESSURE - OUT
- 3 MULTI-STAGE PUMP PRESSURE
- 4 WASTE (CONCENTRATE) PRESSURE

### COMMENTS:

- GPD IS PER 24-HOUR CYCLE.
- PRODUCT WATER IS "PERMEATE" WASTE WATER IS "CONCENTRATE"

THE INFORMATION CONTAINED IN THIS DRAWING IS THE SOLE PROPERTY OF CRYSTAL QUEST. ANY REPRODUCTION IN PART OR AS A WHOLE WITHOUT THE WRITTEN PERMISSION OF CRYSTAL QUEST IS STRICTLY PROHIBITED.

### UNLESS OTHERWISE SPECIFIED:

DATE: 12/18/2018 DRAWN BY: DUSTIN  
TITLE:  
**86,400 GPD MEDICAL R.O. WATER FILTRATION SKID**

### DIMENSION KEY:

- L → LENGTH
- W → WIDTH
- H → HEIGHT
- D → DIAMETER

SIZE	DWG. NO.	REV #
C	1	A
SCALE: 1:20	WEIGHT:	SHEET 1 OF 1