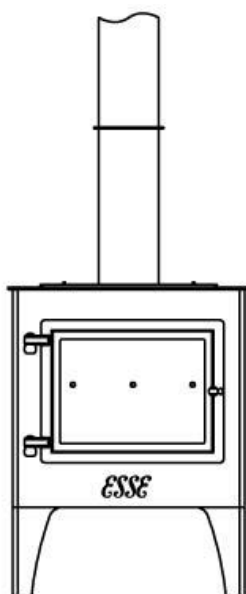


# ESSE

Garden Stove

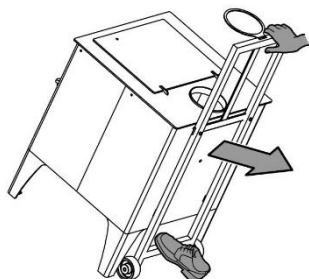
Instruction Manual



## MOVING YOUR ESSE GARDEN STOVE



Do not attempt to move the stove with the lid up, the flue sections are in position, or when the fire is lit and it is in use, as the stove will become very hot.



Your ESSE Garden Stove comes supplied with the wheel trolley in position. To move the appliance, place one foot on the base of the trolley, and gently rock backwards, onto the two wheels. You can now carefully pull your ESSE Garden Stove into position.

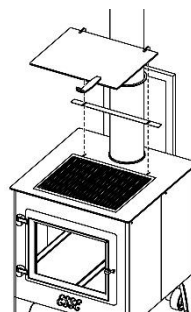
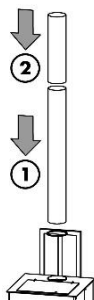
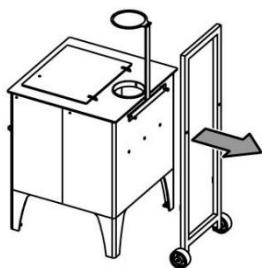
Always ensure that the appliance is positioned on a non-combustible surface. Care should also be given to ensure that there is no combustible materials above the appliance, such as trees.

## PREPARATION FOR USE



Do not cover the appliance, or place any combustible item on any of its surfaces, when in use.

After your ESSE Garden Stove has been used for the first time, we recommend coating it with a fine layer of flax oil, inside and out. This will help prolong the life of your appliance.



Once in position, the trolley can either be removed if desired, or left attached. To remove the trolley, use a 10mm spanner to remove the two retaining nuts. Remove the trolley, before replacing the two retaining nuts.

To assemble the flue, pass the longer of the two flue sections through the supporting bracket, and into position on the stove. Then simply insert the second flue pipe in position above the first.

To lift the lid, insert the pin of the supplied tool into the hole in the top, and swing up. Pull the lid free and place the supplied stainless steel hinge plate between the lid and top of the stove, before repositioning the lid back into place.

## LIGHTING YOUR ESSE GARDEN STOVE



Do not use white spirit or petrol for lighting or re-lighting.

When your ESSE Garden Stove is first lit, it may give off an odour. This is quite normal as the materials used within its manufacture are heated up for the first time.



Place kindling wood on top of fire lighters / newspaper, and carefully light, leaving the door slightly ajar.



Once flames have taken hold, add small logs, again leaving the door slightly ajar.



Once established, add larger logs, fully close the door.



Ensure children and pets are kept away from the appliance during use.

## AFTER USE



Your ESSE Garden Stove will be hot during and after use. Ensure the appliance is completely cool before attempting to clean or move it.

Your ESSE Garden Stove is designed to be kept undercover and dry when not in use.

### Ash Management

1-2cm of ash should be left in each ashpan, which will help the fire to light when next used. However, ensure that the ashpans do not overfill. To remove excess ash, remove the two ashpans, one at a time. Dispose of the excess ash appropriately.

### Cleaning

The exterior cast iron and sheet steel parts should be cleaned with a soft brush or lint-free cloth. Should areas of the appliance need re-painting, high temperature aerosol paints are available from your retailer.

### Storage

Before moving your ESSE Garden Stove, ensure the top is down, and remove the two flue sections. Reattach the trolley if it has been removed, before carefully pulling your ESSE Garden Stove to the undercover area.

### Warranty

Your ESSE Garden Stove comes with a one year warranty against defects in materials and workmanship. Does not cover incorrect use or application, wear and tear or damage to the glass window. The appliance is not to be used as an incinerator.



**ESSE Engineering Ltd.,**

Long Ing, Barnoldswick, Lancashire, BB18 6BJ, UK

**Tel.** 01282 813 235  
**Fax.** 01282 816 876  
**Website** [www.esse.com](http://www.esse.com)