



**Thermotec T600 twin wall insulated flue systems
for gas, oil, wood and multi-fuel appliances backed
by a 15-year guarantee.**

Who are we?

Thermotec is a manufacturer and distributor of precision engineered twin wall flue systems for domestic installations.

We identified that existing twin wall flue products available on today's market fell into one of two categories. The first being the so-called market leaders with their heavily marketed products which, while being of undeniable quality, came at the price of being extremely costly. The second, we felt, came with limitations owing to them being an 'open-ended' product that sacrificed its quality in the interest of achieving a desired price point.

Working with our design team and manufacturing partners, we have designed a precision engineered twin wall flue system. This system not only meets the standards achieved by most of our competitors, in many cases it exceeds them, and all at a price point we believe to be amongst the most competitive on the market today.

Thermotec delivers a product that you can rely on for years to come and does so with the confidence that the quality of our systems is there for all to see.

Carrying vast stock at our South Yorkshire distribution facility of both 5" and 6" twin wall flue systems in both stainless steel and matt black finishes, we can service trade and retail customers alike from individual components through to full twin wall flue systems.

Our sales team have over 80 years of experience within our industry and are able provide our customers with trusted advice ranging from complete flue system design, through to technical back up should it be required during installation.

Trade customers are encouraged to create their own trade account with us which will ensure you receive a trade discount upon approval.



Our construction

Thermotec T600 systems are twin wall insulated flue systems. Thermotec flue products are manufactured using 0.5mm 316 grade stainless steel for the inner skin and 0.5mm 304 grade stainless steel for the outer skin. The cavity is then insulated with 25mm ceramic mineral.



Why use Thermotec T600 flue pipe

- High temperature insulated flue systems designed for optimum performance.
- Quick and simple installation with twist & lock technology.
- Stainless steel & black powder coated finish available from stock.
- All other RAL colours available to order.
- Suitable for Gas, Oil and Solid fuel fired appliances.
- 50mm Distance to combustibles.
- 15 Year warranty. +
- CE Approved.
- Independently KIWA tested and certified.



Technical data

Data plate info for Thermotec pipe is:
Thermotec T600
EN1856-1 T600- N1 - W- V2- L50050- G50

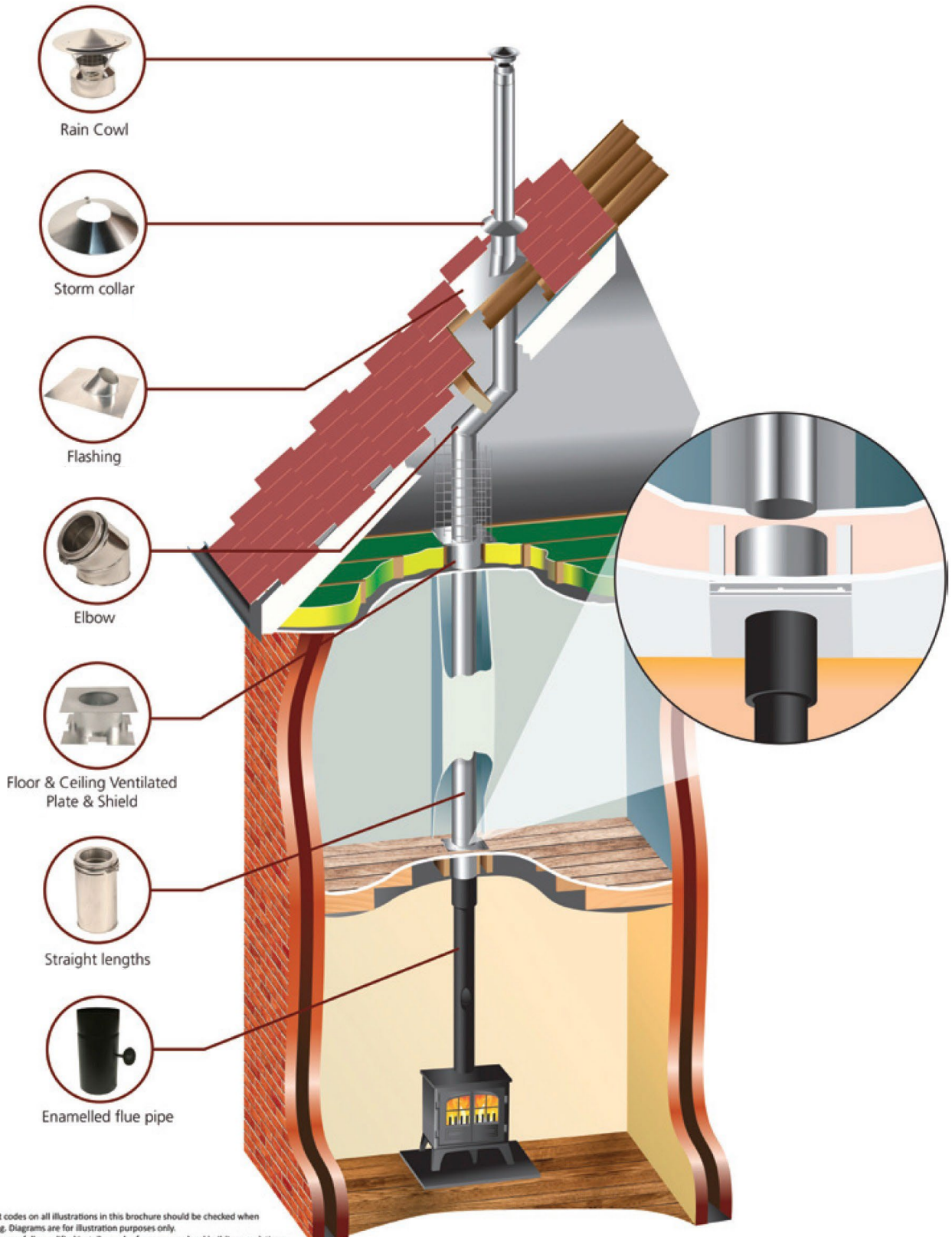
European Norms rating: EN1856-1 Temperature rating class: T600
Condensate resistance: W (Wet) Corrosion resistance Class: V2 Flue
liner thickness: L50050 Soot resistance: G Distance to combustibles:
50mm



Internal Installation

Welcome

Thermotec is constantly building on a reputation for superior products with high quality material, design led aesthetics and technical innovation. Thermotec offers a comprehensive range of twin wall flue pipe components alongside a range of vitreous enamel single wall flue pipe, ensuring there is everything required to create a complete flue system. The Thermotec portfolio of flue systems and associated accessories are designed, tested and manufactured to the highest possible quality and safety standards.



Product codes on all illustrations in this brochure should be checked when ordering. Diagrams are for illustration purposes only. Always use a fully qualified installer and reference your local building regulations.

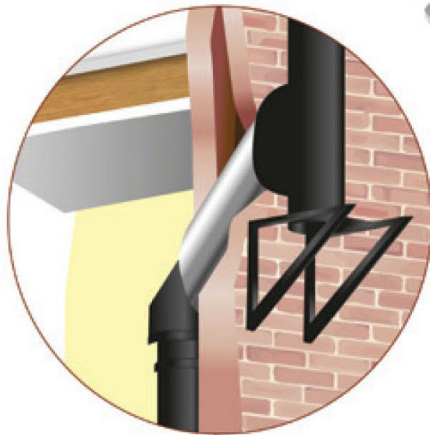
Through Wall Installation

15
YEAR
GUARANTEE



15 Year Warranty

Thermotec offers a 15 year warranty on all twin wall components, offering complete peace of mind for its customers on its Twin Wall flue pipe. This covers any defect due to faulty manufacture provided that the system has been correctly specified, installed, used and maintained in accordance with local building regulations. To maintain the warranty on your chimney system, you must have your chimney system swept annually by an approved chimney sweep and a signed record of this needs to be maintained. In the case of solid fuel installations, your chimney system must only be used with fuels approved and specified by either HETAS or the Solid Fuel Association. Any other fuels will invalidate this warranty. Any chimney fire will also invalidate the warranty and it is always advisable to replace the system.



*Diagrammatic representation only.
Not accurate for installation purposes*

Straight Pipes

Straight Pipes

Straight pipes are available in 5 and 6 inch which easily combine to reach the required height for your installation. All lengths must be installed with the male socket pointing upwards. Due to the twist lock system and locking band each joint can be firmly secured.

| Code | Description |
|------------|-------------------------------|
| FLT-5-1000 | 5" Twin Wall Flue 1000mm Pipe |
| FLT-5-500 | 5" Twin Wall Flue 500mm Pipe |
| FLT-5-300 | 5" Twin Wall Flue 300mm Pipe |
| FLT-5-120 | 5" Twin Wall Flue 120mm Pipe |

| | |
|------------|-------------------------------|
| FLT-6-1000 | 6" Twin Wall Flue 1000mm Pipe |
| FLT-6-500 | 6" Twin Wall Flue 500mm Pipe |
| FLT-6-300 | 6" Twin Wall Flue 300mm Pipe |
| FLT-6-120 | 6" Twin Wall Flue 120mm Pipe |

Adjustable Lengths

Our range includes adjustable lengths in both 5 inch and 6 inch to ease installation and allow for any variation in length and includes a locking band.

| Code | Description |
|----------------|--|
| FLT-5-SLP | 5" Twin Wall Flue Adjustable Pipe 330mm-500mm |
| FLT-5-SLP-LONG | 5" Twin Wall Flue Adjustable Pipe 600mm-1000mm |
| FLT-6-SLP | 5" Twin Wall Flue Adjustable Pipe 330mm-500mm |
| FLT-6-SLP-LONG | 5" Twin Wall Flue Adjustable Pipe 600mm-1000mm |



120mm Pipe



Twin Wall Adjustable



300mm Pipe



500mm Pipe



1000mm Pipe

Elbows and Tees

Elbows

Our range of elbow sockets include locking bands and are provided without locking tabs to ensure easy rotation in order to achieve the correct direction for installation.

| Code | Description |
|-----------|----------------------------------|
| FLT-5-15B | 5" Twin Wall Flue 15 Degree Bend |
| FLT-5-30B | 5" Twin Wall Flue 30 Degree Bend |
| FLT-5-45B | 5" Twin Wall Flue 45 Degree Bend |

| | |
|-----------|----------------------------------|
| FLT-6-15B | 6" Twin Wall Flue 15 Degree Bend |
| FLT-6-30B | 6" Twin Wall Flue 30 Degree Bend |
| FLT-6-45B | 6" Twin Wall Flue 45 Degree Bend |



15 Degree Bend



30 Degree Bend



45 Degree Bend

90 TEE

Including Tee Cap & Locking Band.

This piece allows you to make horizontal connections and where fitted with a Tee Cap, provides an access point for inspection and cleaning. The 90 Tee is available in both 5 inch and 6 inch.

| Code | Description |
|-----------|---------------------------------|
| FLT-5-90T | 5" Twin Wall Flue 90 Degree Tee |
| FLT-6-90T | 6" Twin Wall Flue 90 Degree Tee |



90 Degree Tee

45 TEE

Including Tee Cap & Locking Band.

A tee cap is included which allows for an access point for inspection and cleaning and is available in both 5 inch and 6 inch.

| Code | Description |
|-----------|---------------------------------|
| FLT-5-45T | 5" Twin Wall Flue 45 Degree Tee |
| FLT-6-45T | 6" Twin Wall Flue 45 Degree Tee |



45 Degree Tee

Cowls

Cowls

Our cowls are available in Bird Guard or Anti Down Draught to suit your installation. All lengths must be installed with the male socket pointing upwards. Due to the twist lock system and locking band each joint can be firmly secured.

| Code | Description |
|------------|------------------------------|
| FLT-5-ABRC | 5" Twin Wall Bird Guard Cowl |
| FLT-6-ABRC | 6" Twin Wall Bird Guard Cowl |

| | |
|-----------|-------------------------------------|
| FLT-5-ARC | 5" Twin Wall Anti Down Draught Cowl |
| FLT-6-ARC | 6" Twin Wall Anti Down Draught Cowl |

Roof Flashings

Used to weatherproof the termination point of the flue as it exits a roof covering.

| Code | Description |
|-----------------|------------------------------|
| AZ/101RES | Universal Master Flashing |
| MI/MFS-0021006A | Universal Flat Roof Flashing |

Bird Guard Cowl



Anti Down Draught Cowl



Universal Master Flashing



Universal Flat Roof Flashing



Adaptors

Flex To Twin Wall Adaptor

This component allows a cut length of flexible flue liner to be secured to our twin wall flue systems with a female socket. This piece is secured using the twist lock system and also includes a locking band.

| Code | Description |
|------------|---|
| FLT-5-FTTW | 5" Flexi to 5" Twin Wall Flue Adaptor. c/w Locking Band |
| FLT-6-FTTW | 6" Flexi to 6" Twin Wall Flue Adaptor. c/w Locking Band |

Flex To Twin Wall



Twin Wall To Flexible Adaptor

This component allows a cut length of flexible flue liner to be secured to our twin wall flue systems with a male socket. This piece is secured using the twist lock system and also includes a locking band.

| Code | Description |
|--------------|---|
| FLT-5-TWTOFL | 5" Twin Wall to 5" Flexi Flue Adaptor. c/w Locking Band |
| FLT-6-TWTOFL | 6" Twin Wall to 6" Flexi Flue Adaptor. c/w Locking Band |

Twin Wall To Flexible Adaptor



Single To Twin Wall Adaptor

Use this adaptor to join single wall, enameled flue pipe to the Thermotec system. Both must be of the same internal diameter. This piece is secured using the twist lock system and also includes a locking band.

| Code | Description |
|-----------|--|
| FLT-5-ADP | Adaptor from 5" Enamel to 5" Twin Wall. c/w Locking Band |
| FLT-6-ADP | Adaptor from 6" Enamel to 6" Twin Wall. c/w Locking Band |

Single To Twin Wall



Single To Twin Increasing Adaptor

Use this adaptor to join 5" single wall, enameled flue pipe to the 6" internal Thermotec twin wall system. This piece is secured using the twist lock system and also includes a locking band.

| Code | Description |
|-----------|---|
| FLT-5-IAD | 5" Vitreous to 6" Twin Wall Flue Increasing Appliance Connector. c/w Locking Band |

Single To Twin Increasing Adaptor



Support Accessories

Flue Locking Band

The locking band has a simple spring connection and comes with a circlip to join the mating parts for increased integrity.

| Code | Description |
|----------|--------------------------------|
| FLT-5-LC | 5" Twin Wall Flue Locking Band |
| FLT-6-LC | 6" Twin Wall Flue Locking Band |



Locking Band

Wall Bracket

| Code | Description |
|-----------|-----------------|
| FLT-5-WFB | 5" Wall Bracket |
| FLT-5-WFB | 6" Wall Bracket |



Wall Bracket

Adjustable Wall Bracket

Allowing adjustment of 70mm to 180mm from the wall, these brackets facilitate a straight forward and quick installation.

| Code | Description |
|----------|----------------------------|
| FLT-5-AB | 5" Adjustable Wall Bracket |
| FLT-6-AB | 6" Adjustable Wall Bracket |



Adjustable Wall Bracket

Rafter Support Bracket

The rafter support bracket can be fixed to roof joists to provide added support and can also be used with the Roof Extending Brackets for further support.

| Code | Description |
|-----------|-------------------------------------|
| FLT-5-RSB | 5" Twin Wall Rafter Support Bracket |
| FLT-6-RSB | 6" Twin Wall Rafter Support Bracket |



Rafter Support Bracket

Roof Extending Brackets (2 pieces)

This piece is required to support the flue lengths above 2m on 125mm and 150mm internal diameters.

| Code | Description |
|-----------|--------------------------------------|
| FLT-5-RBK | 5" Twin Wall Extending Roof Brackets |
| FLT-6-RBK | 6" Twin Wall Extending Roof brackets |



Roof Extending Brackets

Base Wall Support C/W Brackets

Used as the flue's main structural support once traveling vertically.

| Code | Description |
|-----------|--------------------------------|
| FLT-5-BWS | 5" Twin Wall Base Wall Support |
| FLT-6-BWS | 6" Twin Wall Base wall support |



Base Wall Support

Adjustable Wall Sleeve

The adjustable wall sleeve is 50mm larger than the external diameter of the pipe and provides protection for the installation when passing through a non-combustible wall. The adjustable sleeve prevents the need to cut to length as it's easily adjustable and secured using self-tapping screws.

| Code | Description |
|----------|----------------|
| FLT-6-WS | 5" Wall Sleeve |
| FLT-6-WS | 6" Wall Sleeve |

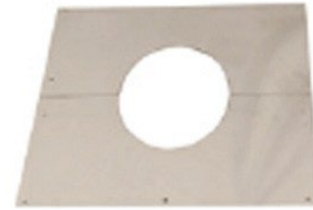


Adjustable Wall Sleeve

Ceiling Plates and Trims

Decorative Plate

Decorative plates can cover both walls and ceilings where a flue passes through it. Can be used internally and externally.

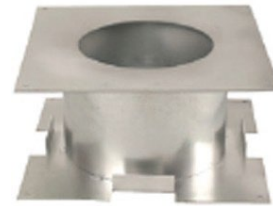


Decorative Plate

| Code | Description |
|------------|------------------------------------|
| FLT-5-AWTP | 5" Twin Wall Flue Decorative Plate |
| FLT-6-AWTP | 6" Twin Wall Flue Decorative Plate |

Radiation Shield

Radiation Shields reduce heat build up between joists where a flue way passes through a floor void.



Radiation Shield

| Code | Description |
|-----------|------------------------------------|
| FLT-5-VCS | 5" Twin Wall Flue Radiation Shield |
| FLT-6-VCS | 6" Twin Wall Flue Radiation Shield |

Ventilated Fire Stop

Ventilated Fire Stops ensure there are no visible fixings when installation is complete and offer protection from heat build up in cavity areas such as ceilings and roof voids.

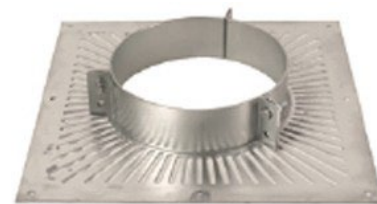


Ventilated Fire Stop

| Code | Description |
|------------|--|
| FLT-5-SVFS | 5" Twin Wall Flue Ventilated Fire Stop |
| FLT-6-SVFS | 6" Twin Wall Flue Ventilated Fire Stop |

Ventilated Support Plate

Ventilated Support Plates fitted to flooring prevent heat build up between joists and offer additional support to the weight of the flue system.



Ventilated Support Plate

| Code | Description |
|-----------|--|
| FLT-5-VFS | 5" Twin Wall Flue Ventilated Support Plate |
| FLT-6-VFS | 6" Twin Wall Flue Ventilated Support Plate |

Storm Collar

Disperses running rain water away from the neck of the flashing.



Storm Collar

| Code | Description |
|-----------|--------------------------------|
| FLT-5-STC | 5" Twin Wall Flue Storm Collar |
| FLT-6-STC | 6" Twin Wall Flue Storm Collar |

Straight Pipes Matt Black

Straight Pipes

Straight pipes are available in 5 and 6 inch which easily combine to reach the required height for your installation. All lengths must be installed with the male socket pointing upwards. Due to the twist lock system and locking band each joint can be firmly secured.

| Code | Description |
|----------------|-------------------------------|
| FLT-5-1000 BLK | 5" Twin Wall Flue 1000mm Pipe |
| FLT-5-500 BLK | 5" Twin Wall Flue 500mm Pipe |
| FLT-5-300 BLK | 5" Twin Wall Flue 300mm Pipe |
| FLT-5-120 BLK | 5" Twin Wall Flue 120mm Pipe |

| | |
|----------------|-------------------------------|
| FLT-6-1000 BLK | 6" Twin Wall Flue 1000mm Pipe |
| FLT-6-500 BLK | 6" Twin Wall Flue 500mm Pipe |
| FLT-6-300 BLK | 6" Twin Wall Flue 300mm Pipe |
| FLT-6-120 BLK | 6" Twin Wall Flue 120mm Pipe |

Adjustable Lengths

Our range includes adjustable lengths in both 5 inch and 6 inch to ease installation and allow for any variation in length and includes a locking band.

| Code | Description |
|--------------------|--|
| FLT-5-SLP BLK | 5" Twin Wall Flue Adjustable Pipe 330mm-500mm |
| FLT-5-SLP-LONG BLK | 5" Twin Wall Flue Adjustable Pipe 600mm-1000mm |
| FLT-6-SLP BLK | 5" Twin Wall Flue Adjustable Pipe 330mm-500mm |
| FLT-6-SLP-LONG BLK | 5" Twin Wall Flue Adjustable Pipe 600mm-1000mm |



120mm Pipe



Twin Wall Adjustable



300mm Pipe



500mm Pipe



1000mm Pipe

Elbows And Tees Matt Black

Elbows

Our range of elbow sockets include locking bands and are provided without locking tabs to ensure easy rotation in order to achieve the correct direction for installation.

| Code | Description |
|---------------|----------------------------------|
| FLT-5-15B BLK | 5" Twin Wall Flue 15 Degree Bend |
| FLT-5-30B BLK | 5" Twin Wall Flue 30 Degree Bend |
| FLT-5-45B BLK | 5" Twin Wall Flue 45 Degree Bend |

| | |
|---------------|----------------------------------|
| FLT-6-15B BLK | 6" Twin Wall Flue 15 Degree Bend |
| FLT-6-30B BLK | 6" Twin Wall Flue 30 Degree Bend |
| FLT-6-45B BLK | 6" Twin Wall Flue 45 Degree Bend |



15 Degree Bend



30 Degree Bend



45 Degree Bend

90 TEE

Including Tee Cap & Locking Band.

This piece allows you to make horizontal connections and where fitted with a Tee Cap, provides an access point for inspection and cleaning. The 90 Tee is available in both 5 inch and 6 inch.

| Code | Description |
|---------------|---------------------------------|
| FLT-5-90T BLK | 5" Twin Wall Flue 90 Degree Tee |
| FLT-6-90T BLK | 6" Twin Wall Flue 90 Degree Tee |



90 Degree Tee

45 TEE

Including Tee Cap & Locking Band.

A tee cap is included which allows for an access point for inspection and cleaning and is available in both 5 inch and 6 inch.

| Code | Description |
|---------------|---------------------------------|
| FLT-5-45T BLK | 5" Twin Wall Flue 45 Degree Tee |
| FLT-6-45T BLK | 6" Twin Wall Flue 45 Degree Tee |



45 Degree Tee

Cowls Matt Black

Cowls

Our cowls are available in Bird Guard or Anti Down Draught to suit your installation. All lengths must be installed with the male socket pointing upwards. Due to the twist lock system and locking band each joint can be firmly secured.

| Code | Description |
|----------------|------------------------------|
| FLT-5-ABRC BLK | 5" Twin Wall Bird Guard Cowl |
| FLT-6-ABRC BLK | 6" Twin Wall Bird Guard Cowl |

| | |
|---------------|-------------------------------------|
| FLT-5-ARC BLK | 5" Twin Wall Anti Down Draught Cowl |
| FLT-6-ARC BLK | 6" Twin Wall Anti Down Draught Cowl |

Bird Guard Cowl



Anti Down Draught Cowl



Starter Length Matt Black

Starter Lengths

Starter lengths allow for the outer skin of the flue to be pulled directly down to meet the top of the appliance hiding the flue's connection to the collar and can be secured to other twist lock components.

| Code | Description |
|-------------------|--|
| FLT-5-STARTER-BLK | 5" Twin Wall Starter Length c/w Locking Band |
| FLT-6-STARTER-BLK | 6" Twin Wall Starter Length c/w Locking Band |

Starter Lengths



Adaptors Matt Black

Single To Twin Wall Adaptor

Use this adaptor to join single wall, enameled flue pipe to the Thermotec system. Both must be of the same internal diameter. This piece is secured using the twist lock system and also includes a locking band.

| Code | Description |
|---------------|---|
| FLT-5-ADP BLK | 5" Vitreous to 6" Twin Wall Flue Increasing Appliance Connector. c/w Locking Band |
| FLT-6-ADP BLK | Adaptor from 6" Enamel to 6" Twin Wall. c/w Locking Band |

Single To Twin Wall



Single To Twin Increasing Adaptor

Use this adaptor to join 5" single wall, enameled flue pipe to the 6" internal Thermotec twin wall system. This piece is secured using the twist lock system and also includes a locking band.

| Code | Description |
|---------------|---|
| FLT-5-IAD BLK | 5" Vitreous to 6" Twin Wall Flue Increasing Appliance Connector. c/w Locking Band |

Single To Twin Increasing



Support Accessories Matt Black

Flue Locking Band

The locking band has a simple spring connection and comes with a circlip to join the mating parts for increased integrity.

| Code | Description |
|--------------|--------------------------------|
| FLT-5-LC BLK | 5" Twin Wall Flue Locking Band |
| FLT-6-LC BLK | 6" Twin Wall Flue Locking Band |



Flue Locking Band

Wall Bracket

Allows the system to be fixed to the wall. These brackets should be used every 2 meters.

| Code | Description |
|---------------|-----------------|
| FLT-5-WFB BLK | 5" Wall Bracket |
| FLT-6-WFB BLK | 6" Wall Bracket |



Wall Bracket

Adjustable Wall Bracket

Allowing adjustment of 70mm to 180mm from the wall, these brackets facilitate a straight forward and quick installation.

| Code | Description |
|--------------|----------------------------|
| FLT-5-AB BLK | 5" Adjustable Wall bracket |
| FLT-6-AB BLK | 6" Adjustable Wall Bracket |



Adjustable Wall Bracket

Roof Extending Brackets (2 pieces)

This piece is required to support the flue lengths above 2m on 125mm and 150mm internal diameters.

| Code | Description |
|---------------|--------------------------------------|
| FLT-5-RBK BLK | 5" Twin Wall Extending Roof Brackets |
| FLT-6-RBK BLK | 6" Twin Wall Extending Roof brackets |



Roof Extending Brackets

Base Wall Support C/W Brackets

Used as the flue's main structural support once traveling vertically.

| Code | Description |
|-----------|--------------------------------|
| FLT-5-BWS | 5" Twin Wall Base Wall Support |
| FLT-6-BWS | 6" Twin Wall Base Wall Support |



Base Wall Support

Ceiling Plates And Trims

Decorative Plate

Decorative plates can cover both walls and ceilings where a flue passes through it. Can be used internally and externally.

| Code | Description |
|----------------|------------------------------------|
| FLT-5-AWTP BLK | 5" Twin Wall Flue Decorative Plate |
| FLT-6-AWTP BLK | 6" Twin Wall Flue Decorative Plate |



Decorative Plate

Ventilated Fire Stop

Ventilated Fire Stops ensure there are no visible fixings when installation is complete and offer protection from heat build up in cavity areas such as ceilings and roof voids.

| Code | Description |
|----------------|--|
| FLT-5-SVFS BLK | 5" Twin Wall Flue Ventilated Fire Stop |
| FLT-6-SVFS BLK | 6" Twin Wall Flue Ventilated Fire Stop |

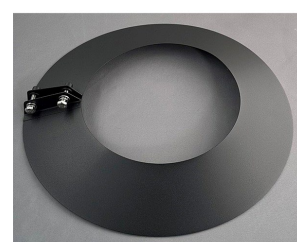


Ventilated Fire Stop

Storm Collar

Disperses running rain water away from the neck of the flashing.

| Code | Description |
|---------------|--------------------------------|
| FLT-5-STC BLK | 5" Twin Wall Flue Storm Collar |
| FLT-6-STC BLK | 6" Twin Wall Flue Storm Collar |



Storm Collar

Accessories



Kos Flue Cement
Cartridge 300ml buff

PU/00010



Kos Flue Cement
Cartridge 300ml black

PU/00011



Heat Mate Silicone
Red-C3

PU/00020



Carbon Monoxide Alarm

REG/D07

Legal Requirements

All installations must conform to building regulations (England & Wales Document J / Scotland Part F / Northern Ireland Part L / Ireland Document J).

For installations outside of the UK, you must check and conform to the relevant building regulations and national standards in that country.

All national building regulations and standards, along with any local regulations and working practices must be adhered to.

This brochure provides only basic guidance. All installations should be installed by a competent person and approved by your local building officer.

Always follow your local building regulations and other specific requirements and guidelines covering electrical, gas, solid fuel and multi-fuel appliances.

When completing the installation and building works, you should comply with your responsibilities under the Health and Safety at Work acts and any new regulations that may have been introduced during the lifetime of this brochure.

Particular attention should be drawn to:

- Handling - The flue system may be heavy. Adequate facilities must be available for loading, unloading and handling.
- Asbestos - This flue system contains no asbestos. If there is a possibility of disturbing any asbestos in the course of installation, please seek specialist guidance and use appropriate equipment.
- Metal Parts - Take care when installing or servicing the flue to avoid personal injury.
- Access - Ensure suitable and safe access is available when working at height and on the roof areas.

A FAULTY INSTALLATION CAN CAUSE DANGER TO THE INHABITANTS AND STRUCTURE OF THE BUILDING



**Thermotec T600 twin wall insulated
flue systems for gas,
oil, wood and multi-fuel
appliances
backed by a 15 year
guarantee.**

Follow us on social media



Unit 5 Wharnccliffe Business Park,
Carlton,
Barnsley,
S71 3HR

www.thermoteconline.co.uk

sales@thermoteconline.co.uk