



By appointment to The Royal Danish Court

morsø

since 1853

MORSØ ROTISSERIE - GRANDE



MORSØ ROTISSERIE - MEDIO



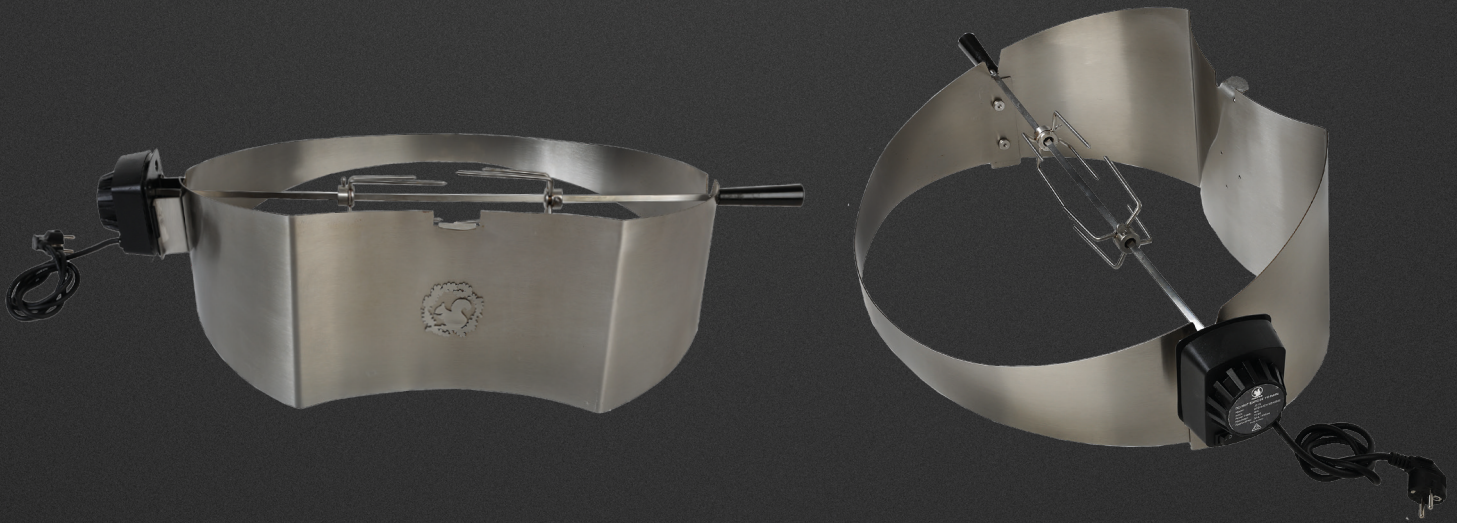
MORSØ ROTISSERIE



By appointment to The Royal Danish Court

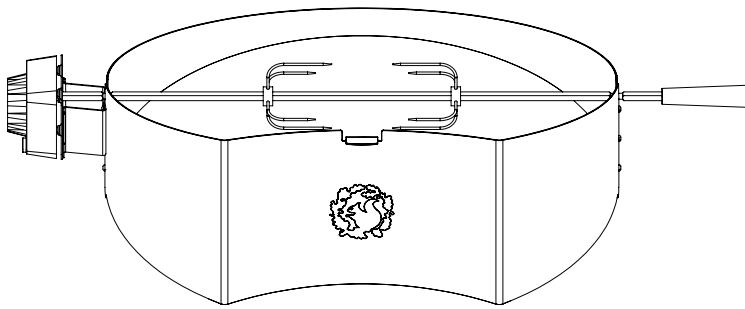
morsø

since 1853

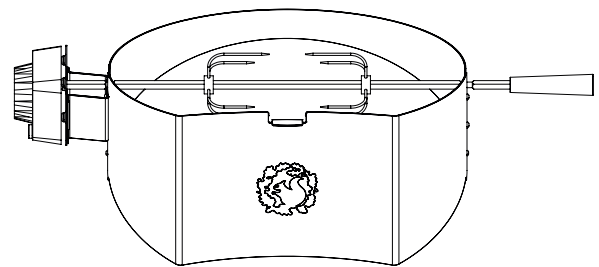


MORSØ ROTISSERIE

TECHNICAL DATA



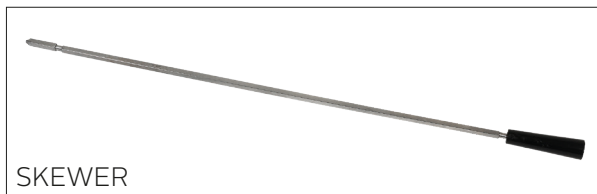
MORSØ ROTISSERIE - GRANDE



MORSØ ROTISSERIE - MEDIO



SCREEN



SKEWER



PRONGS - 2 PCS.



MOTOR

Product code. / Grande 62992300
 Product code. / Medium 62992400
 Motor (Direction change by resistance) 4W/Drive 15 kg
 Height 260(42)/240(50) mm
 Width (screen) 640/470 mm
 Depth 480/430 mm
 Weight 4,7/3,9 kg
 Material. . screen, skewer and prongs in s.steel (304), black plastic handle
 Cord 1400 mm
 Design by Klaus Rath



In general, a rotisserie for a grill is solely intended as a functional expansion. Not so for Morsø, however...

Function-wise, the rotisseries for Morsø's popular Morsø Forno Gas Grande og -Medio are designed to supplement the grill's original characteristic and simple design. The maintenance of the overall design profile whilst at the same time securing optimal quality and functionality was an indispensable requirement for Morsø as for the designer, Klaus Rath.

The beautifully curved screen in stainless steel elegantly wedges itself under the lid of the grill, thus establishing ample room for the rotation of even considerable quantities, just as there is room for a meat-juice collector between the rotator and the grilling core. An even rotation thus facilitates the easy and simple achievement of a beautifully, deliciously and uniformly grilled product.

The rotisserie is easily cleaned, and all steel parts are dishwasher proof.