

BE PROTECTED WITH MASKS & HAND SANITISER



While Stocks Last - E & OE - Ts & Cs apply

DIRECT TO THE PUBLIC

Be Protected

50ML HAND SANITIZER

5L HAND SANITIZER

HAND SANITISER/50ML



Experts say washing with soap and water is first choice, especially if you have visible dirt on your hands. Hand sanitizer is great for when you can't get to soap and water, and it's actually more effective at eliminating germs because it kills them rather than just removing them.



HAND SANITISER

Hand sanitizer is great for when you can't get to soap and water, and it's actually more effective at eliminating germs because it kills them rather than just removing them.



DUST MASKS

FFP1-1

FFP2-1



If you are likely to be in close contact with someone infected with the Coronavirus, a mask cuts the chance of the disease being passed on. If you're showing symptoms, or have been diagnosed, wearing a mask can also protect others. A Flexible pad held over the nose and mouth by elastic straps to protect against germs encountered during daily activities



HAND GLOVES

Ensure to stop spreading germs and protect yourself by wearing gloves while doing daily work and activities. Perfect for light to medium duty jobs that require precision handling.



EXAM GLOVES



3M COMFORT GRIP GLOVES

WX300921193

Large

WX300921201

Xtra-Large

FOR MORE INFORMATION & PRICES CONTACT OUR BRANCHES OR FRANCHISES NATIONWIDE

NATIONAL CALL CENTRE: 010 202 3300

TECHNICAL: 010 202 3500

HEAD OFFICE - JOHANNESBURG

P.O. Box 3812, Edenvale,
1610, South Africa
26 Nguni Drive
Longmeadow Estate West
Edenvale, Gauteng
South Africa



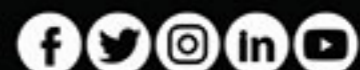
www.acdc.co.za

BRANCH CONTACT DETAILS

Johannesburg	010 202 3300
Germiston	011 418 9600
Cape Town	021 510 0710
Pinetown	031 700 4215
Riverhorse	031 492 4800

GET YOUR
LOYALTY CARD & EARN POINTS
WHILE YOU SHOP

FOLLOW US ON



DETECT HEATED TEMPERATURES WITH THERMAL IMAGING CAMERAS

ACDC
DYNAMICS
www.acdc.co.za

While Stocks Last - E & OE - Ts & Cs apply

DIRECT TO THE PUBLIC

Be Alerted

REVEAL THERMAL IMAGER

Wide field of view quickly scans the inside of a room



ST-REVEAL

- Thermal Sensor: 206 x 156
- Detection Distance: 150m
- Field of View: 36°
- Flashlight: 300lm LED
- Storage: MicroSD Card Included



REVEALXR THERMAL IMAGER

The intuitive, single-handed interface and button control makes it ideal for outdoorsmen and public safety professionals.

ST-REVEALXR*

* Add colour to Code: **B** (Black), **C** (Camo)

- Thermal Sensor: 206 x 156
- Detection Distance: 275m
- Field of View: 20°
- Frame Rate: <15Hz FastFrame
- Flashlight: 300lm LED
- Storage: MicroSD Card Included

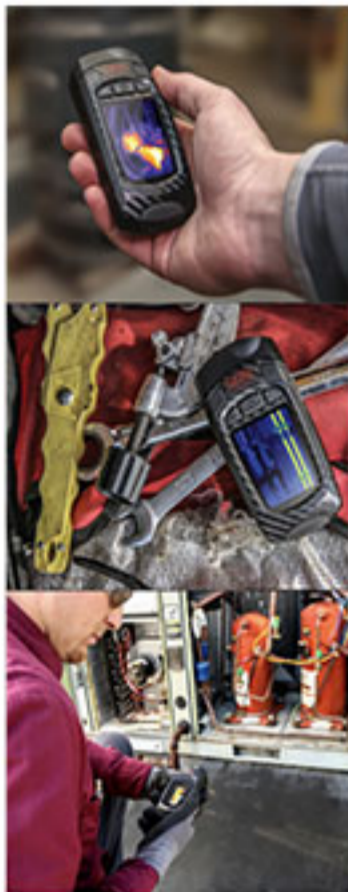


REVEALPRO THERMAL IMAGER

High-Resolution Thermal Sensor
Rugged, rubberized casing with
Corning® Gorilla® Glass

ST-REVEALPRO

- Thermal Sensor: 320 x 240
- Detection Distance: 550m
- Field of View: 32°
- Frame Rate: <15Hz FastFrame in Normal MODE
- Flashlight: 300lm LED
- Storage: 4GB Internal Drive



REVEAL SHOTPRO THERMAL IMAGER IP54

More pixels, more precision -
more resolution than the competition.
Best in class thermal resolution

ST-SHOTPRO

- Thermal Sensor: 320 x 240
- Field of View: 57°
- Temp. Range: -40°C to 330°C
- Storage: 4GB Internal Drive



FOR MORE INFORMATION & PRICES CONTACT OUR BRANCHES OR FRANCHISES NATIONWIDE

NATIONAL CALL CENTRE: 010 202 3300

TECHNICAL: 010 202 3500

HEAD OFFICE - JOHANNESBURG

P.O. Box 3812, Edenvale,
1610, South Africa
26 Nguni Drive
Longmeadow Estate West
Edenvale, Gauteng
South Africa



www.acdc.co.za

BRANCH CONTACT DETAILS

Johannesburg	010 202 3300
Germiston	011 418 9600
Cape Town	021 510 0710
Pinetown	031 700 4215
Riverhorse	031 492 4800

GET YOUR
LOYALTY CARD & EARN POINTS
WHILE YOU SHOP

FOLLOW US ON

