

Accuracy Flight Test

Aircraft Category: 3 - heavy weight

Modeling depth: 3 - full systems

Testdate: 26-Apr-18

Flight Experience: 4 - profesional over 800 hours

Simulation Category: 2 - Payware

Simulation Software: X-Plane

Version: 10

Add-on Category: 2 - Payware

Add-on Software: X-Trident B412

Pilot Specifications: Military Instructor Pilot

Ratings: H-300C, AS350, H-500D, Bell 206B III, AH-64

Licenses: Commercial Rotorcraft, Instrument, CFII

Special experience:

Currently Flying: AH-64D/E

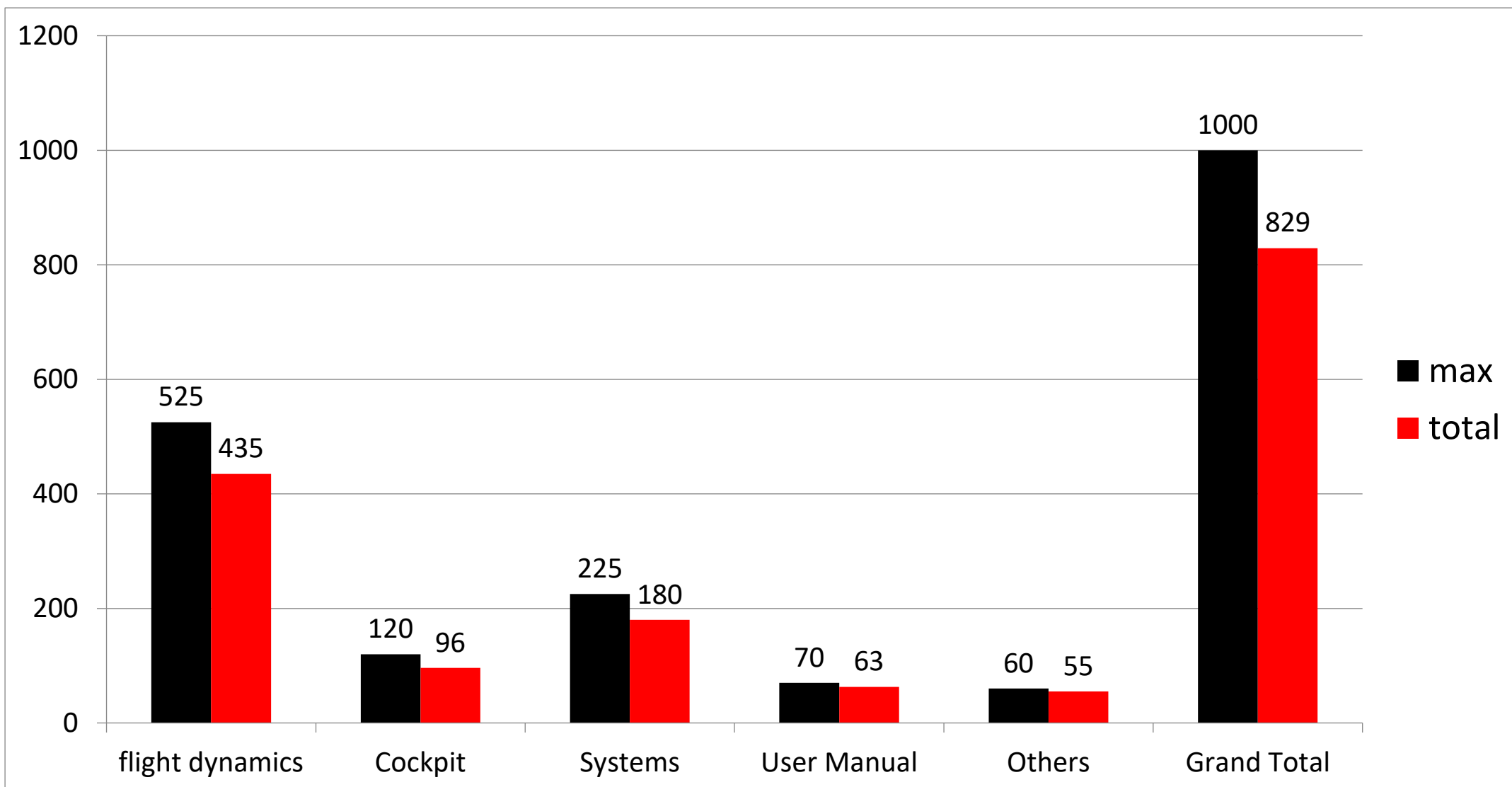
Hardware Specifications

PC Specifications	Intel i7 4790k 4.0 Gz	Windows 10
	Zotac GTX 980	8 GB ram

Controls	Pro Flight Trainer	Puma
----------	--------------------	------

Controls Settings:	published as video on YT
--------------------	--------------------------

Result Quick Overview



Detailed Results

		MAX Score	Score	
flight dynamics		35	29	
Induced Torque - Pedals		8	7	
	Over Power Check		1	1
	No Pedal TO/LDG		2	2
	Pedal Input required		2	2
	MTOW and EW influence		1	1
	Torque and RPM influence		2	1
RPM - Throttle		6	3	
	RPM reaction in Flare		2	1
	Needle Separation		2	1
	Power Limited Approach		1	0
	Warnings and Caution indications		1	1
Collective		5	4	
	Torque/manifold readings		2	1
	RPM Reaction on Collective		2	2
	Vertical Climb Rate		1	1
Cyclic		4	4	
	TO/Hover Position		2	2
	Translational Lift		1	1
	Slopes		1	1
Sensitivity		5	5	
	Controls		5	5

Detailed Results / continued

		MAX Score	Score	
Special Equipment (flight dynamics continued)		2		2
	VR Equipment		1	1
	Others		1	1
Personal Judgment		5		4
	Personal Opinion		5	4
Cockpit		10	8	
3D		10		8
	Against real panel		3	3
	Buttons features and animations		3	2
	Readability		2	2
	Other views		2	1
Systems		15	12	
Procedural		5		4
	Startup / shutdown		3	2
	Others		2	2
Simulated Emergencies		5		5
	AR		2	2
	Hover AR		1	1
	Blocked pedals		1	1
	Others (ex: Hydraulic OUT)		1	1
Overall		5		3
	Usability		1	1
	adjustable difficulty		4	2

Detailed Results / continued

		MAX Score	Score
User Manual		10	9
Flight Manual		10	9
	setup and introduction	6	5
	details	2	2
	Recommended Settings	2	2
Others		60	55
Costs		5	5
Performance impact		10	9
Paint Library		5	5
Check Lists		10	7
External Views		5	4
Sounds		5	5
Graphics / Effects		5	5
Special Features		15	15

Totals

			max	total
Calculation Factor	15	flight dynamics	525	435
	12	Cockpit	120	96
	15	Systems	225	180
	7	User Manual	70	63
	1	Others	60	55
		Grand Total	1000	829

