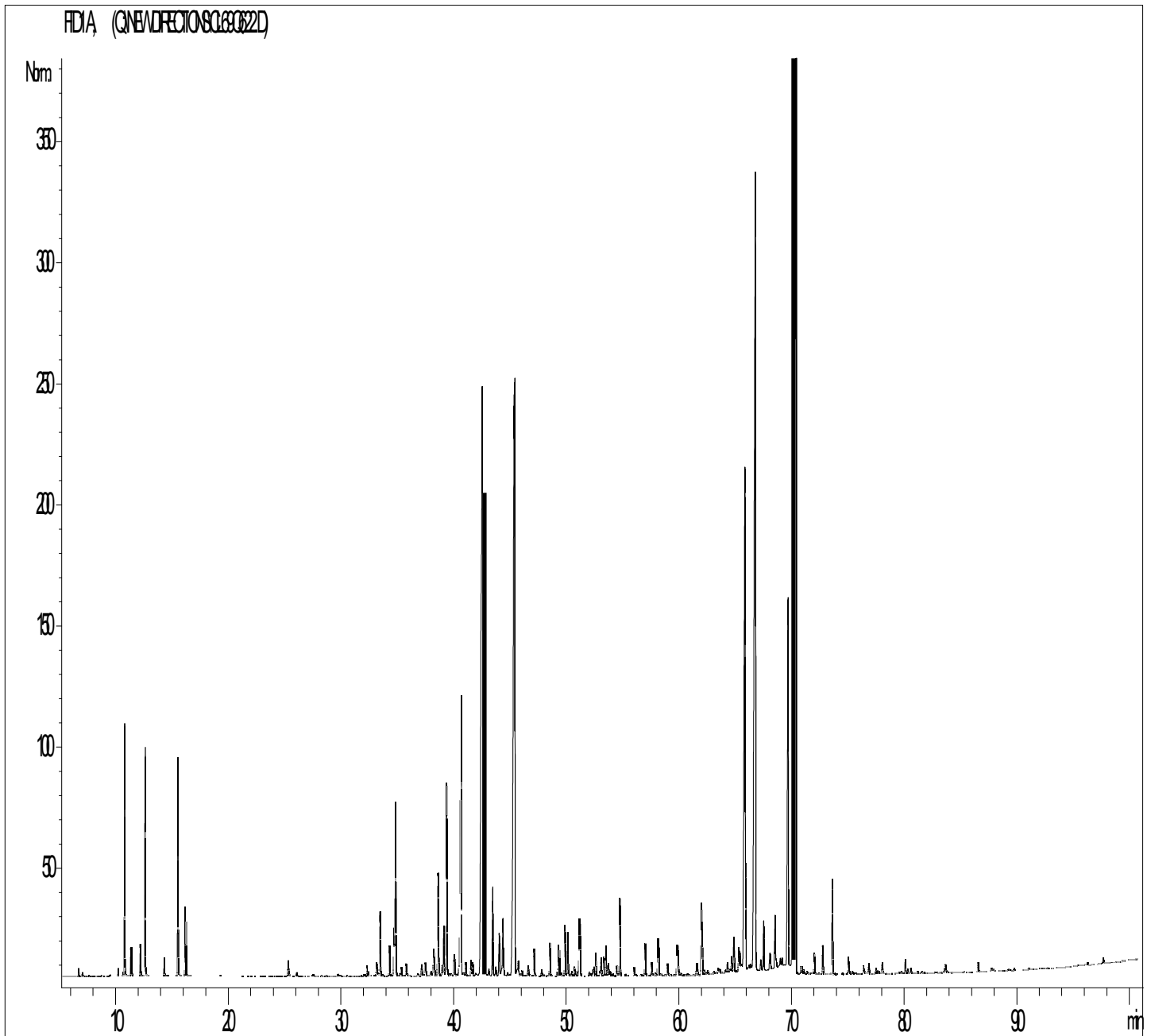


GCMS ANALYSIS

Product Name: Turmeric Essential Oil (India)
Date: April 27, 2018



Product Name: Turmeric Essential Oil (India) Cont'd
Date: April 27, 2018

Peak	RT (min)	Component name	%
1	6,6	alpha-PINENE	0,03
2	7,0	TOLUENE	0,02
3	7,6	Camphene	0,01
4	8,7	beta-PINENE	0,01
5	9,5	SABINENE	0,01
6	10,1	delta3-CARENE	0,04
7	10,6	beta-MYRCENE	0,02
8	10,8	alpha-PHELLANDRENE	1,42
9	10,9	psi-LIMONENE	0,01
10	11,3	alpha-TERPINENE	0,17
11	12,2	LIMONENE	0,20
12	12,6	1,8-CINEOLE	1,43
13	14,3	gamma-TERPINENE	0,12
14	15,5	p-CYMENE	1,41
15	16,2	TERPINOLENE	0,46
16	16,5	ALIPHATIC KETONE	0,01
17	19,3	6-METHYL-5-HEPTEN-2-ONE	0,01
18	25,2	alpha,p-DIMETHYLSTYRENE	0,14
19	26,0	ALIPHATIC CETONE	0,03
20	27,5	SESQUITERPENE	0,01
21	28,6	alpha-COPAENE	0,01
22	29,7	CAMPHOR	0,02
23	29,9	ALKYL COMPOUND Mw=160	0,02
24	32,3	1-METHYL-4-ACETYLCYCLOHEX-1-ENE	0,10
25	33,1	alpha-CEDRENE	0,12
26	33,2	alpha,cis-BERGAMOTENE	0,03
27	33,4	alpha-SANTALENE	0,58
28	33,6	SESQUITERPENE	0,03
29	34,3	alpha-trans-BERGAMOTENE	0,25
30	34,6	CURCUMENE ISOMER Mw=202	0,43

Disclaimer & Caution

Prior to use, please refer to all relevant technical information specific to the product. The information contained in this document is obtained from current and reliable sources. Botanic Universe Corp. provides the information contained herein, but makes no representation as to its comprehensiveness or accuracy. Individuals receiving this information must exercise their independent judgment in determining its appropriateness for a particular purpose. The user of the product is solely responsible for compliance with all laws and regulations applying to the use of the product, including intellectual property rights of third parties. As the ordinary or otherwise use(s) of this product is outside the control of Botanic Universe Corp., no representation or warranty - expressed or implied - is made as to the effect(s) of such use(s), (including damage or injury), or the results obtained. The liability of Botanic Universe Corp. is limited to the value of the goods and does not include any consequential loss. Botanic Universe Corp. shall not be liable for any errors or delays in the content or for any actions taken in reliance thereon. Botanic Universe Corp. shall not be responsible for any damages resulting from the use of or reliance upon this information. In the event of any dispute, the Customer hereby agree that Jurisdiction is limited to the province of Ontario.

Product Name: Turmeric Essential Oil (India) Cont'd
Date: April 27, 2018

Peak	RT (min)	Component name	%
31	34,8	beta-CARYOPHYLLENE	1,64
32	35,2	SESQUITERPENE	0,03
33	35,3	TERPINENE-4-OL	0,08
34	35,7	Epi-beta-SANTALENE	0,11
35	35,8	SESQUITERPENE	0,02
36	36,7	SESQUITERPENE Mw=202	0,02
37	37,1	SESQUITERPENE Mw=202	0,12
38	37,4	beta-SANTALENE	0,14
39	37,9	SESQUITERPENE	0,05
40	38,2	CURCUMENE ISOMER	0,37
41	38,6	alpha-ACORADIENE	1,08
42	38,9	E-beta-FARNESENE	0,10
43	39,0	alpha-HUMULENE	0,45
44	39,3	POLYENIC SESQUITERPENE Mw=202	2,00
45	40,0	Z-beta-FARNESENE	0,29
46	40,4	CURCUMENE ISOMER	0,11
47	40,6	gamma-CURCUMENE	2,87
48	40,7	SESQUITERPENE	0,04
49	40,9	OXYGENED COMPOUND Mw=206	0,03
50	41,0	alpha-TERPINEOL	0,11
51	41,5	POLYENIC SESQUITERPENE Mw=202	0,13
52	41,6	SESQUITERPENE Mw=204	0,14
53	41,9	SESQUITERPENE	0,04
54	42,4	SESQUITERPENE Mw=202	0,50
55	42,5	alpha-ZINGIBERENE	8,63
56	42,7	beta-BISABOLENE	2,13
57	42,8	SESQUITERPENE	0,17
58	43,1	SESQUITERPENE Mw=202	0,07
59	43,4	beta-CURCUMENE	0,76
60	43,7	SESQUITERPENE	0,10

Disclaimer & Caution

Prior to use, please refer to all relevant technical information specific to the product. The information contained in this document is obtained from current and reliable sources. Botanic Universe Corp. provides the information contained herein, but makes no representation as to its comprehensiveness or accuracy. Individuals receiving this information must exercise their independent judgment in determining its appropriateness for a particular purpose. The user of the product is solely responsible for compliance with all laws and regulations applying to the use of the product, including intellectual property rights of third parties. As the ordinary or otherwise use(s) of this product is outside the control of Botanic Universe Corp., no representation or warranty - expressed or implied - is made as to the effect(s) of such use(s), (including damage or injury), or the results obtained. The liability of Botanic Universe Corp. is limited to the value of the goods and does not include any consequential loss. Botanic Universe Corp. shall not be liable for any errors or delays in the content or for any actions taken in reliance thereon. Botanic Universe Corp. shall not be responsible for any damages resulting from the use of or reliance upon this information. In the event of any dispute, the Customer hereby agree that Jurisdiction is limited to the province of Ontario.

Product Name: Turmeric Essential Oil (India) Cont'd
Date: April 27, 2018

Peak	RT (min)	Component name	%
61	44,0	DEHYDRO AROMADENDRENE Mw=202	0,44
62	44,3	delta-CADINENE	0,07
63	44,4	SESQUITERPENE	0,58
64	44,8	p-METHYLACETOPHENONE	0,02
65	45,3	beta-SESQUIPELLANDRENE	1,29
66	45,4	alpha-CURCUMENE	10,44
67	45,7	COMPONENT Mw=218	0,26
68	46,0	POLYENIC SESQUITERPENE Mw=202	0,06
69	46,6	POLYENIC SESQUITERPENE Mw=202	0,10
70	47,1	SABINOL ISOMER	0,23
71	47,7	POLYENIC SESQUITERPENE Mw=202	0,05
72	48,5	POLYENIC SESQUITERPENE Mw=202	0,30
73	49,2	SESQUITERPENONE	0,04
74	49,3	AROMATIC COMPOUND	0,26
75	49,5	AROMATIC COMPOUND	0,03
76	49,8	METHOXYPHENOLIC COMPOUND Mw=178 ISOMER	0,45
77	50,1	METHOXYPHENOLIC COMPOUND Mw=178 ISOMER	0,37
78	50,4	SESQUITERPENOL	0,04
79	50,6	beta-VETIVENE	0,08
80	50,9	COMPONENT Mw=248	0,05
81	51,2	DEHYDROCURCUMENE	0,55
82	52,0	AROMATIC COMPOUND	0,04
83	52,2	COMPONENT Mw=200	0,03
84	52,3	COMPONENT Mw=248	0,05
85	52,5	SESQUITERPENONE ISOMER Mw=220	0,08
86	52,6	SESQUITERPENONE ISOMER Mw=220	0,20
87	52,9	SESQUITERPENONE ISOMER Mw=220	0,03
88	53,0	SESQUITERPENONE ISOMER Mw=220	0,16
89	53,3	SESQUITERPENONE ISOMER Mw=220	0,16
90	53,5	AROMATIC COMPOUND Mw=178	0,27

Disclaimer & Caution

Prior to use, please refer to all relevant technical information specific to the product. The information contained in this document is obtained from current and reliable sources. Botanic Universe Corp. provides the information contained herein, but makes no representation as to its comprehensiveness or accuracy. Individuals receiving this information must exercise their independent judgment in determining its appropriateness for a particular purpose. The user of the product is solely responsible for compliance with all laws and regulations applying to the use of the product, including intellectual property rights of third parties. As the ordinary or otherwise use(s) of this product is outside the control of Botanic Universe Corp., no representation or warranty - expressed or implied - is made as to the effect(s) of such use(s), (including damage or injury), or the results obtained. The liability of Botanic Universe Corp. is limited to the value of the goods and does not include any consequential loss. Botanic Universe Corp. shall not be liable for any errors or delays in the content or for any actions taken in reliance thereon. Botanic Universe Corp. shall not be responsible for any damages resulting from the use of or reliance upon this information. In the event of any dispute, the Customer hereby agree that Jurisdiction is limited to the province of Ontario.

Product Name: Turmeric Essential Oil (India) Cont'd
Date: April 27, 2018

Peak	RT (min)	Component name	%
91	53,7	AROMATIC COMPOUND Mw=178	0,13
92	53,8	AROMATIC COMPOUND	0,05
93	54,5	EPOXYDE SESQUITERPENIQUE	0,09
94	54,7	METHYL PHENYL PENTANONE ISOMER Mw=176	0,70
95	56,0	AROMATIC COMPOUND	0,07
96	56,9	AROMATIC COMPOUND	0,34
97	57,5	CURCUMENIC COMPOUND Mw=218	0,16
98	57,9	SANTALOL ISOMER	0,07
99	58,1	PHENYL KETONE Mw=218	0,33
100	58,9	CURCUMENIC COMPOUND Mw=218	0,14
101	59,8	PHENYL KETONE Mw=218	0,35
102	60,0	NEROLIDOL	0,04
103	61,6	CURCUMENIC COMPOUND Mw=218	0,10
104	61,9	AROMATIC COMPOUND	0,68
105	62,0	AROMATIC COMPOUND	0,31
106	62,2	AROMATIC COMPOUND	0,05
107	63,4	CURCUMENIC COMPOUND Mw=218	0,06
108	63,6	CURCUMENIC COMPOUND Mw=218	0,04
109	64,2	CURCUMENIC COMPOUND Mw=218	0,10
110	64,7	CURCUMENIC COMPOUND Mw=218	0,15
111	64,9	TURMERONE ISOMER	0,38
112	65,2	CURCUMENIC COMPOUND Mw=218	0,25
113	65,4	SESQUITERPENOL	0,26
114	65,8	CURCUPHENOL Mw=218	7,66
115	66,7	alpha-TUMERONE Mw=218	13,16
116	67,3	AROMATIC COMPOUND Mw=234	0,12
117	67,5	TUMERONE ISOMER	0,45
118	68,0	AROMATIC COMPOUND Mw=234	0,21
119	68,5	AROMATIC COMPOUND Mw=218	0,59
120	69,0	COMPOUND Mw=214	0,10

Disclaimer & Caution

Prior to use, please refer to all relevant technical information specific to the product. The information contained in this document is obtained from current and reliable sources. Botanic Universe Corp. provides the information contained herein, but makes no representation as to its comprehensiveness or accuracy. Individuals receiving this information must exercise their independent judgment in determining its appropriateness for a particular purpose. The user of the product is solely responsible for compliance with all laws and regulations applying to the use of the product, including intellectual property rights of third parties. As the ordinary or otherwise use(s) of this product is outside the control of Botanic Universe Corp., no representation or warranty - expressed or implied - is made as to the effect(s) of such use(s), (including damage or injury), or the results obtained. The liability of Botanic Universe Corp. is limited to the value of the goods and does not include any consequential loss. Botanic Universe Corp. shall not be liable for any errors or delays in the content or for any actions taken in reliance thereon. Botanic Universe Corp. shall not be responsible for any damages resulting from the use of or reliance upon this information. In the event of any dispute, the Customer hereby agree that Jurisdiction is limited to the province of Ontario.

Product Name: Turmeric Essential Oil (India) Cont'd
Date: April 27, 2018

Peak	RT (min)	Component name	%
121	69,2	COMPOUND Mw=216	0,12
122	69,7	beta-TUMERONE Mw=218 (CURLONE)	4,10
123	70,0	COMPOUND Mw=216	0,44
124	70,4	Ar-TUMERONE Mw=216	19,37
125	70,8	COMPOUND Mw=218	0,07
126	71,0	AROMATIC COMPOUND	0,05
127	72,0	AROMATIC SESQUITERPENOL Mw=220	0,21
128	72,7	AROMATIC SESQUITERPENOL Mw=220	0,26
129	73,6	gamma-ATLANTONE	0,86
130	75,0	ZINGIBEROL	0,16
131	76,3	AROMATIC COMPOUND	0,12
132	76,8	BENZOFURAN, 2,3-DEHYDRO Mw=120	0,09
133	77,5	NAPHTALENIC COMPOUND Mw=230	0,05
134	78,0	AROMATIC COMPOUND	0,10
135	80,0	CURCUMENIC COMPOUND	0,12
136	80,3	NAPHTALENIC COMPOUND Mw=230	0,04
137	80,5	AROMATIC COMPOUND	0,05
138	83,7	AROMATIC COMPOUND	0,12
139	86,5	CURCUMENIC COMPOUND	0,08
140	87,7	AROMATIC COMPOUND	0,04
141	89,7	AROMATIC COMPOUND	0,02
142	96,2	AROMATIC COMPOUND	0,03
		TOTAL	99,85

Disclaimer & Caution

Prior to use, please refer to all relevant technical information specific to the product. The information contained in this document is obtained from current and reliable sources. Botanic Universe Corp. provides the information contained herein, but makes no representation as to its comprehensiveness or accuracy. Individuals receiving this information must exercise their independent judgment in determining its appropriateness for a particular purpose. The user of the product is solely responsible for compliance with all laws and regulations applying to the use of the product, including intellectual property rights of third parties. As the ordinary or otherwise use(s) of this product is outside the control of Botanic Universe Corp., no representation or warranty - expressed or implied - is made as to the effect(s) of such use(s), (including damage or injury), or the results obtained. The liability of Botanic Universe Corp. is limited to the value of the goods and does not include any consequential loss. Botanic Universe Corp. shall not be liable for any errors or delays in the content or for any actions taken in reliance thereon. Botanic Universe Corp. shall not be responsible for any damages resulting from the use of or reliance upon this information. In the event of any dispute, the Customer hereby agree that Jurisdiction is limited to the province of Ontario.