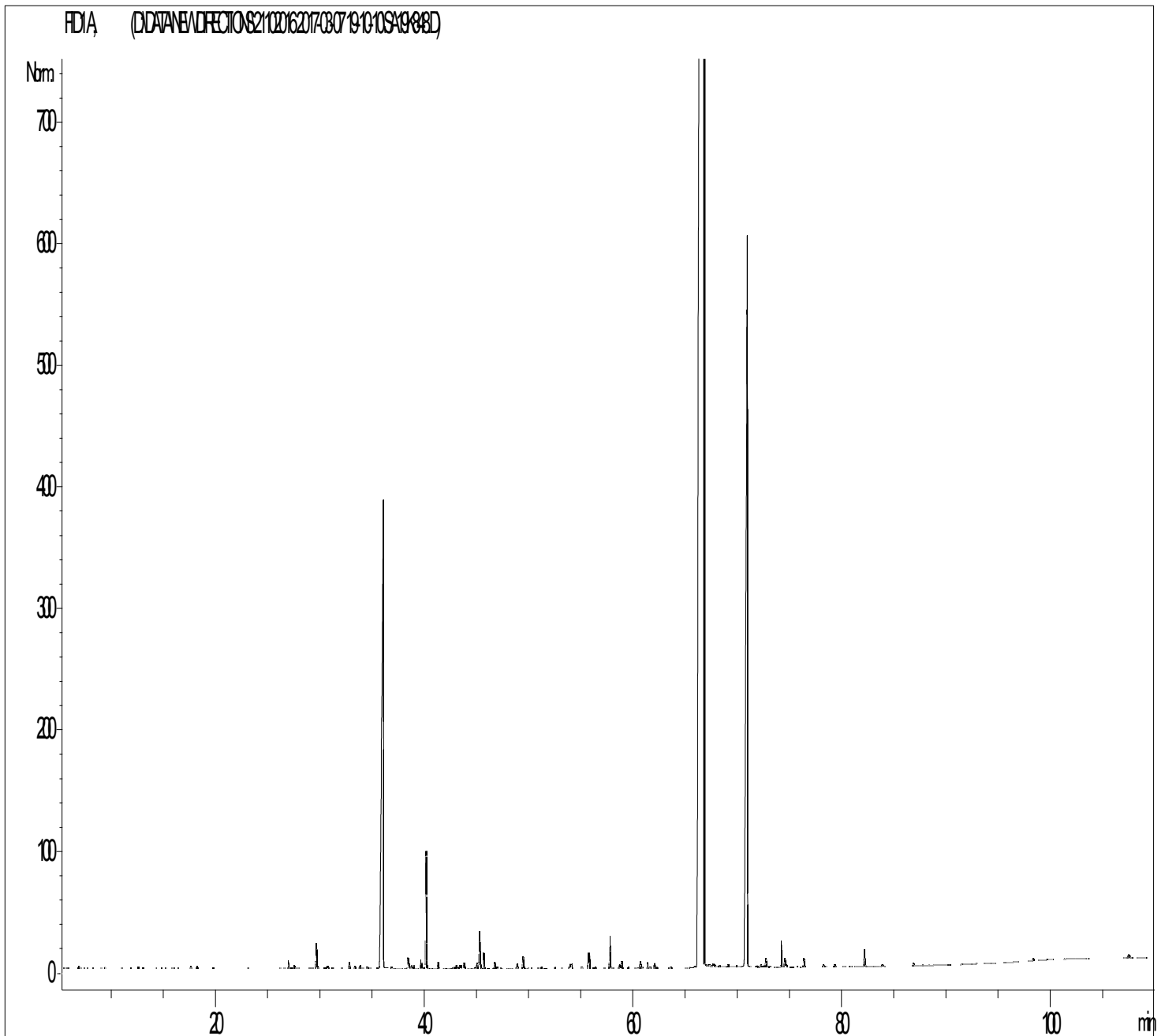


## GCMS ANALYSIS

Product Name: Clove Bud Essential Oil (Indonesia)  
Date: April 6, 2017



Product Name: Clove Bud Essential Oil (Indonesia) Cont'd  
Date: April 6, 2017

Peak	RT (min)	Compound name	%
1	5,1	ISOVALERALDEHYDE	0,01
2	6,8	□-THUYENE	0,01
3	12,6	LIMONENE	0,01
4	13,1	1,8-CINEOLE	0,01
5	17,6	ISOAMYL ISOVALERATE	0,01
6	18,2	NONATRIENE DIMETHYL	0,01
7	27,0	FURFURAL	0,04
8	27,5	□-CUBEBENE	0,02
9	29,6	□-COPAENE	0,19
10	30,7	BENZALDEHYDE	0,01
11	32,8	LINALOOL	0,03
12	33,3	LINALYL ACETATE	0,01
13	33,8	2-FURANCARBOXALDEHYDE, 5-METHYL	0,01
14	34,5	ISOCARYOPHYLLENE ISOMER	0,02
15	36,1	□- <b>CARYOPHYLLENE</b>	<b>6,75</b>
16	36,8	SESQUITERPENE	0,01
17	38,4	MENTHOL	0,09
18	38,7	ALLO-AROMADENDRENE	0,02
19	38,9	SESQUITERPENE	0,02
20	39,7	ZONARENE	0,05
21	39,9	ESTRAGOL	0,01
22	40,2	□-HUMULENE	0,83
23	41,3	□-MUUROLENE	0,04
24	42,8	SESQUITERPENE	0,01
25	43,1	□-SELINENE + BENZYL ACETATE	0,03
26	43,4	□-SELINENE	0,01
27	43,5	SESQUITERPENE	0,02
28	43,8	TERPINENE ISOMER	0,04
29	44,8	□-FARNESENE	0,01
30	45,0	□-CADINENE	0,03
31	45,3	□-CADINENE	0,29
32	45,7	METHYL SALICYLATE	0,09

#### Disclaimer & Caution

Prior to use, please refer to all relevant technical information specific to the product. The information contained in this document is obtained from current and reliable sources. Botanic Universe Corp. provides the information contained herein, but makes no representation as to its comprehensiveness or accuracy. Individuals receiving this information must exercise their independent judgment in determining its appropriateness for a particular purpose. The user of the product is solely responsible for compliance with all laws and regulations applying to the use of the product, including intellectual property rights of third parties. As the ordinary or otherwise use(s) of this product is outside the control of Botanic Universe Corp., no representation or warranty - expressed or implied - is made as to the effect(s) of such use(s), (including damage or injury), or the results obtained. The liability of Botanic Universe Corp. is limited to the value of the goods and does not include any consequential loss. Botanic Universe Corp. shall not be liable for any errors or delays in the content or for any actions taken in reliance thereon. Botanic Universe Corp. shall not be responsible for any damages resulting from the use of or reliance upon this information. In the event of any dispute, the Customer hereby agree that Jurisdiction is limited to the province of Ontario.

Product Name: Clove Bud Essential Oil (Indonesia) Cont'd  
Date: April 6, 2017

Peak	RT (min)	Compound name	%
33	46,7	CADINA-1,4-DIENE	0,04
34	48,9	Trans-ANETHOL	0,03
35	49,4	CALAMENENE	0,09
36	51,2	BENZYL ALCOHOL	0,01
37	52,5	ALIPHATIC ESTER	0,01
38	53,9	AROMATIC KETONE Mw=164	0,01
39	54,0	AROMATIC COMPOUND	0,05
40	55,1	SESQUITERPENIC EPOXIDE	0,02
41	55,7	ALIPHATIC ACETATE	0,09
42	57,3	ISOCARYOPHYLLENE OXIDE	0,01
43	57,7	CARYOPHYLLENE OXIDE	0,30
44	58,7	SESQUITERPENIC EPOXIDE	0,03
45	58,9	METHYLEUGENOL	0,05
46	59,5	ALIPHATIC ESTER	0,01
47	60,7	HUMULENE, 6,7-EPOXIDE	0,04
48	61,3	CARYOPHYLLENOL	0,04
49	61,6	CADINOL ISOMER	0,01
50	62,1	SESQUITERPENOL	0,03
51	63,6	AROMATIC COMPOUND	0,01
52	66,7	<b>EUGENOL</b>	<b>80,51</b>
53	67,7	T-CADINOL	0,03
54	69,2	□-CADINOL	0,01
55	71,0	<b>EUGENYL ACETATE</b>	<b>9,21</b>
56	72,2	COMPOUND Mw=220	0,02
57	72,8	CARYOPHYLLA-3,7-DIEN-6-OL	0,06
58	74,2	CHAVICOL	0,16
59	74,6	ISOEUGENOL	0,07
60	74,7	SESQUITERPENOL	0,02
61	76,4	SESQUITERPENIC EPOXIDE	0,07
62	78,3	ISOEUGENYL ACETATE	0,01
63	79,3	COUMARIN	0,02
64	82,2	2',3',4'-TRIMETHOXYACETOPHENONE	0,12

#### Disclaimer & Caution

Prior to use, please refer to all relevant technical information specific to the product. The information contained in this document is obtained from current and reliable sources. Botanic Universe Corp. provides the information contained herein, but makes no representation as to its comprehensiveness or accuracy. Individuals receiving this information must exercise their independent judgment in determining its appropriateness for a particular purpose. The user of the product is solely responsible for compliance with all laws and regulations applying to the use of the product, including intellectual property rights of third parties. As the ordinary or otherwise use(s) of this product is outside the control of Botanic Universe Corp., no representation or warranty - expressed or implied - is made as to the effect(s) of such use(s), (including damage or injury), or the results obtained. The liability of Botanic Universe Corp. is limited to the value of the goods and does not include any consequential loss. Botanic Universe Corp. shall not be liable for any errors or delays in the content or for any actions taken in reliance thereon. Botanic Universe Corp. shall not be responsible for any damages resulting from the use of or reliance upon this information. In the event of any dispute, the Customer hereby agree that Jurisdiction is limited to the province of Ontario.

Product Name: Clove Bud Essential Oil (Indonesia) Cont'd  
Date: April 6, 2017

Peak	RT (min)	Compound name	%
33	46,7	CADINA-1,4-DIENE	0,04
65	83,9	VANILLIN	0,01
66	86,9	BENZYL BENZOATE	0,02
67	107,5	2-PROPENAL HYDROXY METHOXYPHENYL Mw=178	0,03
		<b>TOTAL</b>	<b>99,99</b>

#### Disclaimer & Caution

Prior to use, please refer to all relevant technical information specific to the product. The information contained in this document is obtained from current and reliable sources. Botanic Universe Corp. provides the information contained herein, but makes no representation as to its comprehensiveness or accuracy. Individuals receiving this information must exercise their independent judgment in determining its appropriateness for a particular purpose. The user of the product is solely responsible for compliance with all laws and regulations applying to the use of the product, including intellectual property rights of third parties. As the ordinary or otherwise use(s) of this product is outside the control of Botanic Universe Corp., no representation or warranty - expressed or implied - is made as to the effect(s) of such use(s), (including damage or injury), or the results obtained. The liability of Botanic Universe Corp. is limited to the value of the goods and does not include any consequential loss. Botanic Universe Corp. shall not be liable for any errors or delays in the content or for any actions taken in reliance thereon. Botanic Universe Corp. shall not be responsible for any damages resulting from the use of or reliance upon this information. In the event of any dispute, the Customer hereby agree that Jurisdiction is limited to the province of Ontario.