

Product Sheet



Product Data

Product Name	Africa Climatex
Article Number	6017
Colors	3 colors col. 01, col. 02, col. 03
Content col. 01, col. 02	78%Cradura (Polyamid), 13% certified farm wool, 9% Redesigned Lenzing FR
Content col. 03	79%Cradura (Polyamid), 12% certified farm wool, 9% Redesigned Lenzing FR
Width	141cm (139cm) 55.5" (54.7")
Weight col. 01, col. 02	430g/m2 (15oz/m2)
Weight col. 03	467g/m2 (16.5oz/m2)
Repeat	vert.: 31.5cm (12.4")horiz.: 24.5cm (9.6")
Application Area	Climatex Dualcycle Jacquard upholstery textile for climate-controlled seating suitable for home, office, automotive and transportation.

Test Certificates



EN 1021 1+2
BS 5852 0+1
IMO Resolution MSC 307 (88); Annex 1, part 8
UNI 9175, Classe UNO I EMME
California TB 117, Class 1

Martindale: 100'000; ISO 12947-2
Pilling ISO 12945-2: 4
Rub fastness dry: 4-5, wet: 4-5
Light fastness ISO 105/B02: 6

Manufacturer / Agent

4Spaces GmbH
Seestrasse 86
8712 Stäfa - Switzerland
info@4spaces.ch
T +41 43 366 89 45

Manufacturing Technique

Cradle to Cradle jacquard woven

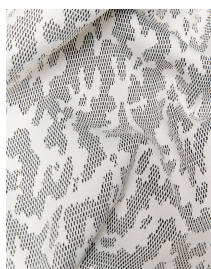
Maintenance



Vacuum with a soft brush, wipe with a damp sponge to clean stains, for strong stains professional dry cleaning recommended.

Remarks

For any other inquiries please contact Manufacturer



col.01



col.02



col.03

Product Sheet



Product Data

Product Name	Brazil Climatex
Article Number	6018
Colors	1 color col. 01
Content	78%Cradura (Polyamid), 13% certified farm wool, 9% Redesigned Lenzing FR
Width	141cm (139cm) 55.5" (54.7")
Weight	478g/m2 (16.8oz/m2)
Repeat	vert.: 15.4cm (6")horiz.: 16cm (6.3")
Application Area	Climatex Dualcycle Jacquard upholstery textile for climate-controlled seating suitable for home, office, automotive and transportation.

Test Certificates



EN 1021 1+2
BS 5852 0+1
IMO Resolution MSC 307 (88); Annex 1, part 8
UNI 9175, Classe UNO I EMME
California TB 117, Class 1

Martindale: 100'000; ISO 12947-2
Pilling ISO 12945-2: 4
Rub fastness dry: 4-5, wet: 4-5
Light fastness ISO 105/B02: 6

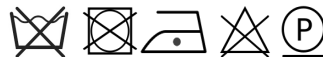
Manufacturer / Agent

4Spaces GmbH
Seestrasse 86
8712 Stäfa - Switzerland
info@4spaces.ch
T +41 43 366 89 45

Manufacturing Technique

Cradle to Cradle jacquard woven

Maintenance



Vacuum with a soft brush, wipe with a damp sponge to clean stains, for strong stains professional dry cleaning recommended.

Remarks

For any other inquiries please contact Manufacturer



Product Sheet



Product Data

Product Name	Earth Climatex
Article Number	6019
Colors	1 color col. 01
Content	83%Cradura (Polyamid), 10% certified farm wool, 7% Redesigned Lenzing FR
Width	141cm (139cm) 55.5" (54.7")
Weight	519g/m2 (18.3oz/m2)
Repeat	vert.: 38.5cm (15")horiz.: 32cm (12.6")
Application Area	Climatex Dualcycle Jacquard upholstery textile for climate-controlled seating suitable for home, office, automotive and transportation.

Test Certificates



EN 1021 1+2
BS 5852 0+1
IMO Resolution MSC 307 (88); Annex 1, part 8
UNI 9175, Classe UNO I EMME
California TB 117, Class 1

Martindale: 100'000; ISO 12947-2
Pilling ISO 12945-2: 4
Rub fastness dry: 4-5, wet: 4-5
Light fastness ISO 105/B02: 6

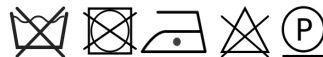
Manufacturer / Agent

4Spaces GmbH
Seestrasse 86
8712 Stäfa - Switzerland
info@4spaces.ch
T +41 43 366 89 45

Manufacturing Technique

Cradle to Cradle jacquard woven

Maintenance



Vacuum with a soft brush, wipe with a damp sponge to clean stains, for strong stains professional dry cleaning recommended.

Remarks

For any other inquiries please contact Manufacturer



Product Sheet



Product Data

Product Name	Europa Climatex
Article Number	6020
Colors	1 color col.01
Content	82%Cradura (Polyamid), 11% certified Farm Wool, 7% Redesigned Lenzing FR
Width	141cm (139cm) 55.5" (54.7")
Weight	479g/m2 (16.9oz/m2)
Repeat	vert.: 3.8cm (1.5") horiz.: 4cm (1.6")
Application Area	Climatex Dualcycle Jacquard upholstery textile for climate-controlled seating suitable for home, office, automotive and transportation.

Test Certificates



EN 1021 1+2
BS 5852 0+1
IMO Resolution MSC 307 (88); Annex 1, part 8
UNI 9175, Classe UNO I EMME
California TB 117, Class 1

Martindale: 100'000; ISO 12947-2
Pilling ISO 12945-2: 4
Rub fastness dry: 4-5, wet: 4-5
Light fastness ISO 105/B02: 6

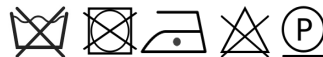
Manufacturer / Agent

4Spaces GmbH
Seestrasse 86
8712 Stäfa - Switzerland
info@4spaces.ch
T +41 43 366 89 45

Manufacturing Technique

Cradle to Cradle jacquard woven

Maintenance



Vacuum with a soft brush, wipe with a damp sponge to clean stains, for strong stains professional dry cleaning recommended.

Remarks

For any other inquiries please contact Manufacturer



Product Sheet



Product Data

Product Name	Gate Climatex
Article Number	6021
Colors	1 color col. 01
Content	82%Cradura (Polyamid), 11% certified farm wool, 7% Redesigned Lenzing FR
Width	141cm (139cm) 55.5" (54.7")
Weight	476g/m2 (16.8oz/m2)
Repeat	vert.: 3cm (1.2")horiz.: 3cm (1.2")
Application Area	Climatex Dualcycle Jacquard upholstery textile for climate-controlled seating suitable for home, office, automotive and transportation.

Test Certificates



EN 1021 1+2
BS 5852 0+1
IMO Resolution MSC 307 (88); Annex 1, part 8
UNI 9175, Classe UNO I EMME
California TB 117, Class 1

Martindale: 100'000; ISO 12947-2
Pilling ISO 12945-2: 4
Rub fastness dry: 4-5, wet: 4-5
Light fastness ISO 105/B02: 6

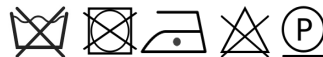
Manufacturer / Agent

4Spaces GmbH
Seestrasse 86
8712 Stäfa - Switzerland
info@4spaces.ch
T +41 43 366 89 45

Manufacturing Technique

Cradle to Cradle jacquard woven

Maintenance



Vacuum with a soft brush, wipe with a damp sponge to clean stains, for strong stains professional dry cleaning recommended.

Remarks

For any other inquiries please contact Manufacturer



Product Sheet



Product Data

Product Name	Japan Climatex
Article Number	6022
Colors	2 colors col. 01, col. 02
Content	82%Cradura (Polyamid), 11% certified farm wool, 7% Redesigned Lenzing FR
Width	141cm (139cm) 55.5" (54.7")
Weight	469.5g/m2 (16.5oz/m2)
Repeat	vert.: 14cm (5.5") horiz.: 7cm (2.75")
Application Area	Climatex Dualcycle Jacquard upholstery textile for climate-controlled seating suitable for home, office, automotive and transportation.

Test Certificates



EN 1021 1+2
BS 5852 0+1
IMO Resolution MSC 307 (88); Annex 1, part 8
UNI 9175, Classe UNO I EMME
California TB 117, Class 1

Martindale: 100'000; ISO 12947-2
Pilling ISO 12945-2: 4
Rub fastness dry: 4-5, wet: 4-5
Light fastness ISO 105/B02: 6

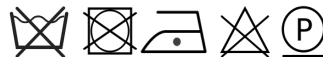
Manufacturer / Agent

4Spaces GmbH
Seestrasse 86
8712 Stäfa - Switzerland
info@4spaces.ch
T +41 43 366 89 45

Manufacturing Technique

Cradle to Cradle jacquard woven

Maintenance



Vacuum with a soft brush, wipe with a damp sponge to clean stains, for strong stains professional dry cleaning recommended.

Remarks

For any other inquiries please contact Manufacturer



col.01



col.02

Product Sheet



Product Data

Product Name	Mars Climatex
Article Number	6023
Colors	1 color col. 01
Content	78%Cradura (Polyamid), 13% certified farm wool, 9% Redesigned Lenzing FR
Width	141cm (139cm) 55.5" (54.7")
Weight	470g/m2 (16.6oz/m2)
Repeat	vert.: 48cm (18.9") horiz.: 31cm (12.2")
Application Area	Climatex Dualcycle Jacquard upholstery textile for climate-controlled seating suitable for home, office, automotive and transportation.

Test Certificates



EN 1021 1+2
BS 5852 0+1
IMO Resolution MSC 307 (88); Annex 1, part 8
UNI 9175, Classe UNO I EMME
California TB 117, Class 1

Martindale: 100'000; ISO 12947-2
Pilling ISO 12945-2: 4
Rub fastness dry: 4-5, wet: 4-5
Light fastness ISO 105/B02: 6

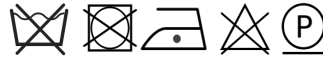
Manufacturer / Agent

4Spaces GmbH
Seestrasse 86
8712 Stäfa - Switzerland
info@4spaces.ch
T +41 43 366 89 45

Manufacturing Technique

Cradle to Cradle jacquard woven

Maintenance



Vacuum with a soft brush, wipe with a damp sponge to clean stains, for strong stains professional dry cleaning recommended.

Remarks

For any other inquiries please contact Manufacturer

